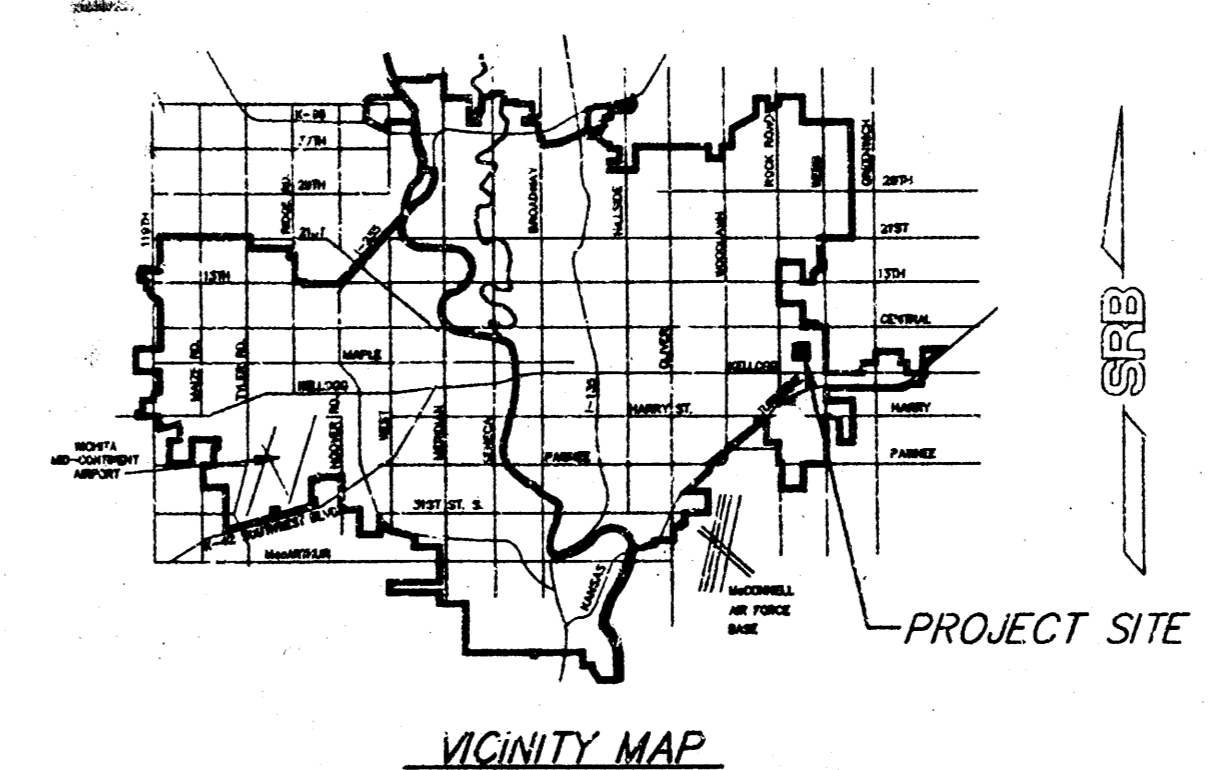


Scale: PLAN  
 1" = 20'  
 PROFILE  
 1" = 20' Horiz.  
 1" = 5' Vert.

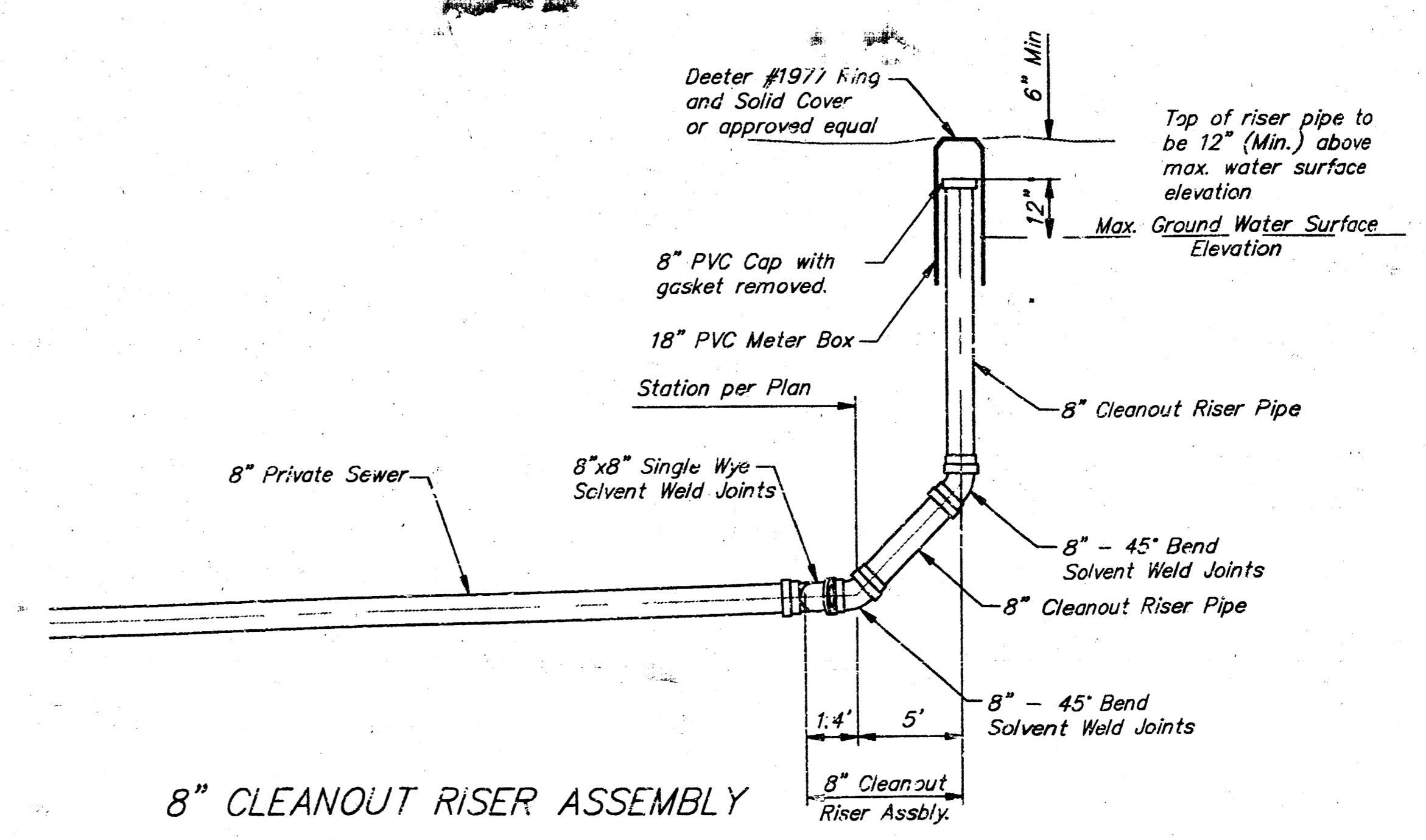
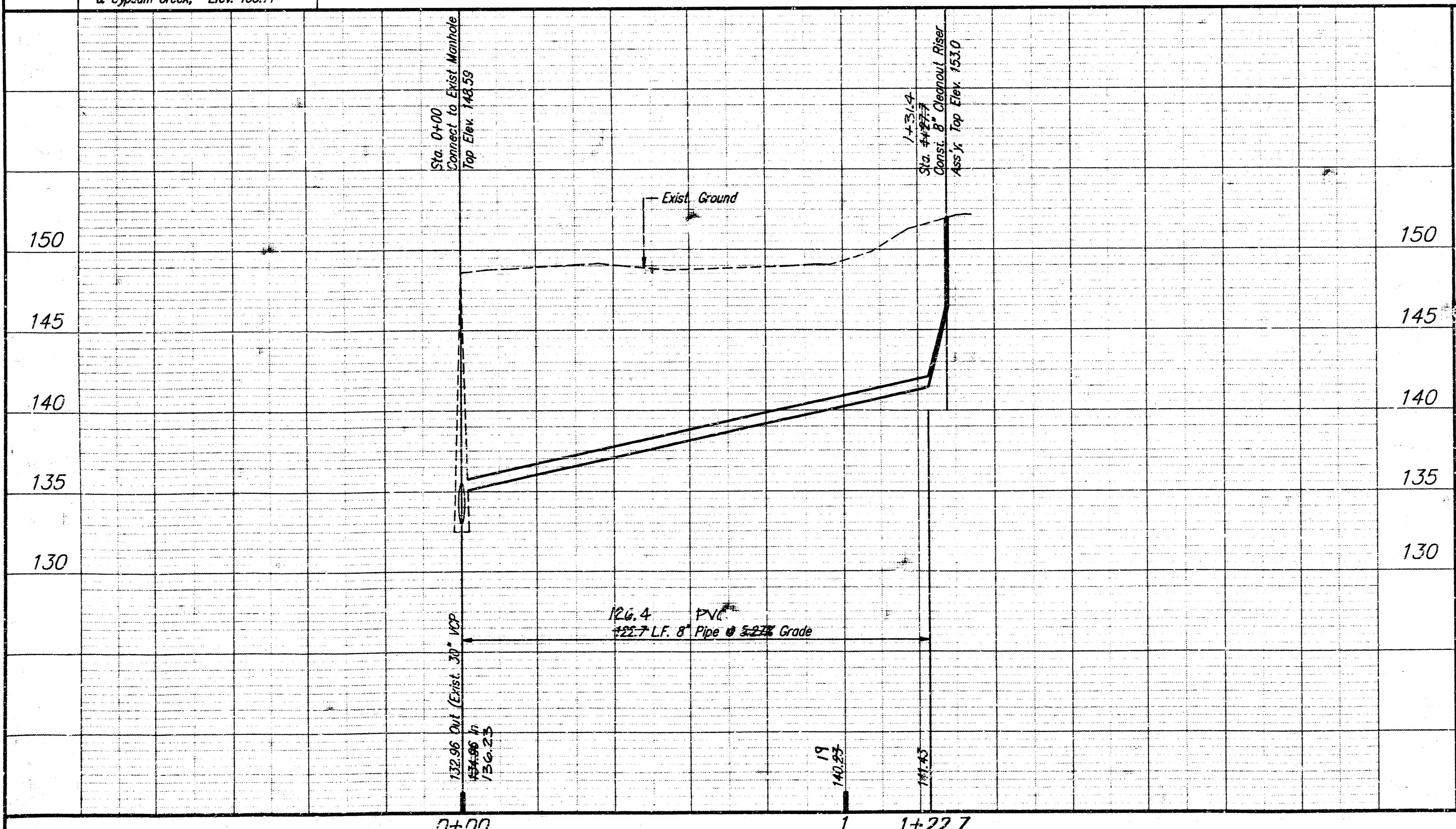


APPROVED AS NOTED  
 BY CITY ENGINEER OF WICHITA

Sanitary Sewers VRH 3/3/94  
 Storm Sewers \_\_\_\_\_  
 Driveway Approaches \_\_\_\_\_  
 Water Mains \_\_\_\_\_  
 Paving \_\_\_\_\_

NOTE TO CONTRACTOR  
 Inspection and testing for this project are to be provided by a Licensed Consulting Engineering Firm under contract with the Owner/Developer. Said inspection to be in accordance with the City of Wichita standard construction engineering practices and certified by a Licensed Professional Engineer. No work shall be performed in dedicated easements or public right-of-way by the Contractor without such inspection, nor shall any work be commenced without written authorization by the City Engineer.

- GENERAL NOTES:
1. Construction from Sta. 0+00 to 1+27.7 shall be inspected and tested according to standard specifications of the City of Wichita.
  2. The existing 8" building sewer line is to remain in service until the new sewer has been accepted for service by the City of Wichita.



Revised as Built 5-31-94 JCR

Booked 8/14/94  
 JKB  
 From As Builts

INDEPENDENT SCHOOL  
 PRIVATE SANITARY SEWER EXTENSION

SRB 841 SOUTH HILLSIDE 316-652-7754  
 WICHITA, KANSAS 67211 FAX 652-7932

SAVOY, RUGGLES & BOHM, P.A.  
 ENGINEERING & SURVEYING

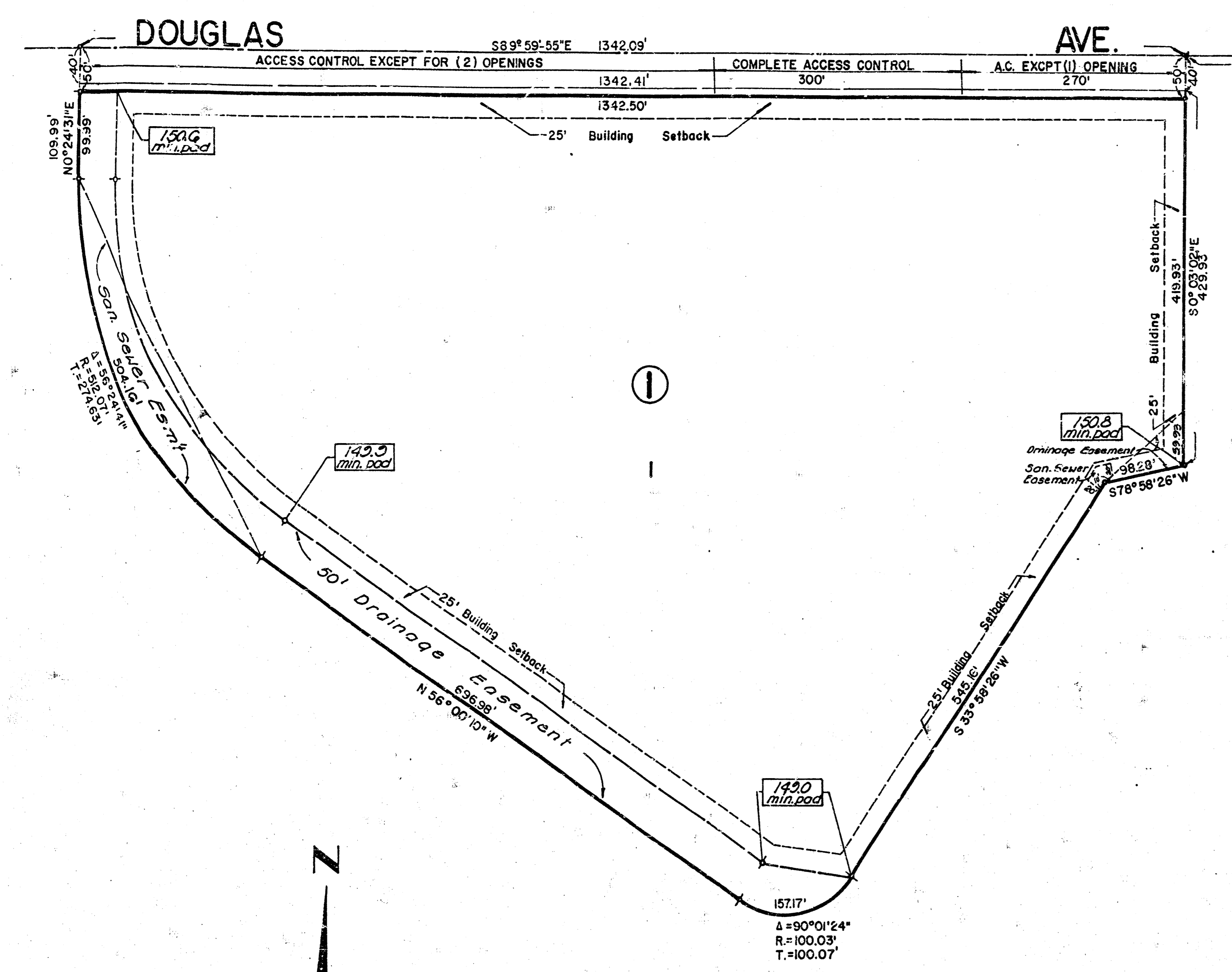
PROJECT NUMBER: 425PPS INDEX CODE: 607861

DATE: 12/29/93

62-4-29

PD 4-29

# BONNIE BRAE THIRD ADDITION TO WICHITA, SEDGWICK COUNTY, KANSAS



SCALE: 1"=100'  
 March 20, 1961  
 BM=Chisal\*\* on top curb North of SW cor.  
 of Loch Lomond & Douglas Elev.=150.48  
 (City Datum)

Minimum pad elevations are set at the locations shown. Intervening elevations are determined by straight grade interpolation.

State of Kansas  
 County of Sedgwick

I, R.W. Linn, a professional Engineer in aforesaid State and County, do hereby certify that on this 21<sup>st</sup> day of April, 1961, I have caused to be surveyed and plotted "BONNIE BRAE THIRD ADDITION", to Wichita, Sedgwick County, Kansas, into a Lot, a Block, a Street, and Drainage Easement, the same being described as: A plot of Blocks 16 & 17 together with Mayfair Lane between said blocks; the Northerly 60 feet of Loch Lomond abutting onto the South Side of Block 16; the Westerly 60 feet of Skye Drive between Mayfair Lane and Loch Lomond all in Bonnie Brae, an Addition to Wichita, Kansas. More particularly described as: Beginning at a point in the East Line and 40.00 feet South of the N.E. Cor. of the SW 1/4, Sec. 20, T27S, R22E of G.P.M., thence bearing S0°03'02" E along the East Line of the SW 1/4 of Sec. 20 a distance of 429.23 ft.; thence bearing S78°53'26" W a dist. of 92.28 ft.; thence bearing S33°53'26" W a dist. of 545.16 ft. to the P.C. of a Curve to the Right; thence along said Curve to the Right having a Rad. of 100.03 ft. through a Central Angle of 90°01'24" an Arc Dist. of 157.17 ft.; thence bearing N56°00'10" W a dist. of 696.28 ft. to the P.C. of a Curve to the Right; thence along said Curve to the Right having a Rad. of 512.07 ft. through a Central Angle of 56°24'41" an Arc Dist. of 504.16 ft.; thence bearing N0°24'31" E a dist. of 100.00 ft. to a point 40.00 ft. South of the N.L. of the SW 1/4 of Sec. 20; thence parallel to and 40.00 ft. South of said N.L. bearing S90°50'55" E a dist. of 142.41 ft. to the point of beginning.

*R.W. Linn* #543960  
 R.W. Linn, P.E.  
 No. 3604

Know all men these presents that we, the undersigned party owners of the land as above set forth in the Engineer's Certificate, have caused the land to be surveyed and plotted into a lot, a block, a street, and a drainage easement, the same to be known as "BONNIE BRAE THIRD ADDITION" to Wichita, Sedgwick County, Kansas. Utility Easements, as indicated for the construction and maintenance of public utilities are hereby granted; the Drainage Easement is hereby granted for drainage purposes. The Street is hereby dedicated to the use of the public. All abutter's right of access to and from Douglas Street over and across the N.L. of Lot 1, Block 1, are hereby granted to the City of Wichita; provided however that Lot 1, Block 1, shall have access to Douglas Street at three (3) locations. Said locations to be designated by the City Engineer of Wichita, Kansas. All portions of Bonnie Brae Addition within above described street are hereby vacated by virtue of K.S.A. 12-12(b). Fences, Hoops, Structures, or Pits are not permitted within the drainage easement. Minimum pad elevations are required as noted.

*Jean K. Garvey*  
 Jean K. Garvey

Jean K. Garvey Revocable Trust

*Jean K. Garvey*

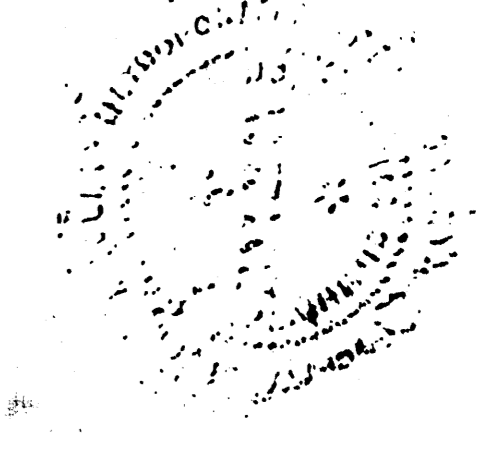
State of Kansas  
 County of Sedgwick

Be it remembered that on this 21<sup>st</sup> day of April, 1961, before me, a Notary Public, in aforesaid State and County, came Jean K. Garvey & Jean K. Garvey Revocable Trust by *Jean K. Garvey* to me personally known to be the same person who executed the foregoing instrument of writing & duly acknowledged the same. In my presence, whereof there hereunto set my hand and affixed my notary seal, the said *Jean K. Garvey* above written.

*Ruthie A. Nelson* Notary Public  
 My Commission expires: January 28, 1964

This plat has been submitted to and approved by the Wichita-Sedgwick County Metropolitan Area Planning Commission, Wichita, Kansas Dated this 21<sup>st</sup> day of April, 1961.

*James L. Gresham, Jr.* Vice Chairman  
*Robert A. LaKin* Secretary



This plat has been approved and all dedications shown hereon are accepted by the City Commission of the City of Wichita, Kansas. Dated this 21<sup>st</sup> day of April, 1961.

*R.C. Brown* Mayor  
*Donald C. Gaisick* City Clerk

This is to certify that this instrument was filed for record in the Register of Deeds Office at 10:30 A.M. on this 21<sup>st</sup> day of JUNE, 1961.

*Belle F. McCurt* Register of Deeds  
*Pat Luttler* Deputy

This plat approved and all dedications shown hereon are accepted by the Board of County Commissioners of Sedgwick County, Kansas. Dated this 21<sup>st</sup> day of April, 1961.

*Donald E. Young* Chairman  
*Jack Spratt* Commissioner  
*Tom Scott* Commissioner

Attest:  
*Dorothy K. White* County Clerk  
 Dorothy K. White Judge with Jurisdi.

Entered on Transfer Record this 21<sup>st</sup> day of June, 1961.

*Dorothy K. White* County Clerk  
 Dorothy K. White Judge with Jurisdi.