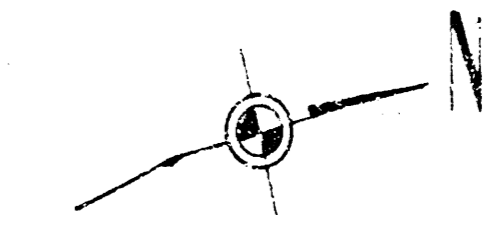
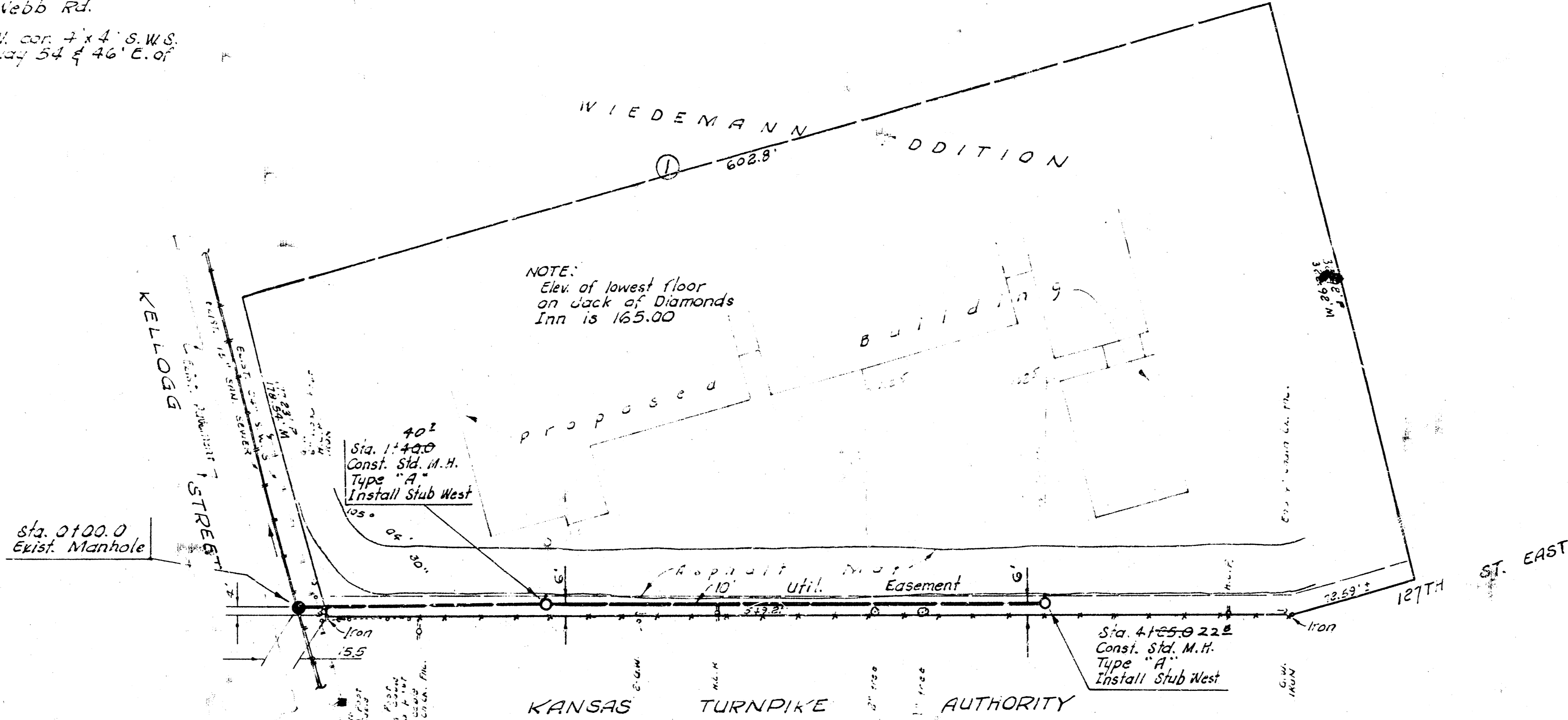


B. M. # 1713 C. at W. Sta. 73.4' So. of E. 1/4 Sec. 34 of T. 31 S. of E. Webb Rd.
 B. M. # 2 1713 "E" at S.W. cor. 7 x 4' S.W.S. 1/4 of Sec. 34 of T. 31 S. of E. Webb Rd. 54' 46" C. of W. C. K. T. A. 3/4 W.



Plan Scale 1" = 40'
 Profile Scale 1" = 40' horiz.
 1" = 5' Vert.

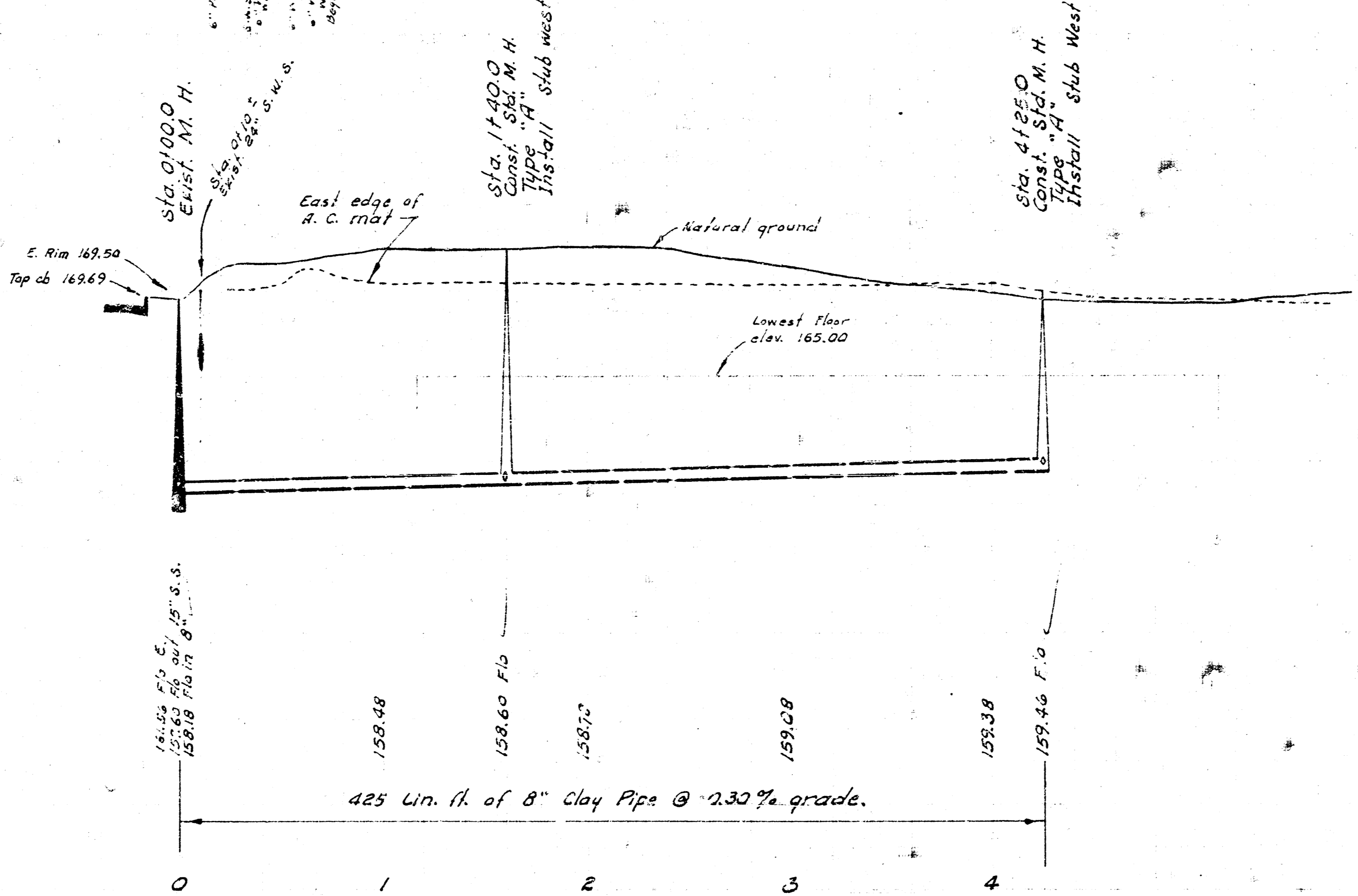


NOTE TO CONTRACTOR
 This project will be constructed under the supervision of the CITY ENGINEER and conforming to the SPECIFICATIONS of the CITY OF WICHITA. The CONTRACTOR will reimburse the City of Wichita for all cost of Engineering, Plans, and Inspections.

80

175
170
165
160
155

175
170
165
160
155



As Built Final Measurements 1-11-78
JACK OF DIAMONDS INN
 PRIVATE SANITARY SEWER
 N. W. KELLOGG ST. & K. T. A.
 CITY OF WICHITA, KANSAS
 R. W. LINN - CITY ENGINEER
 MARCH 1973 PROJECT NO. BHK/503009

14 2 1 8