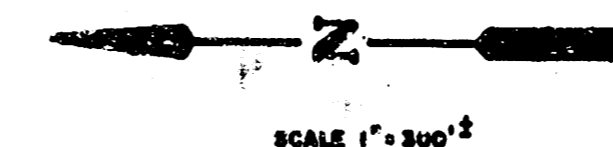
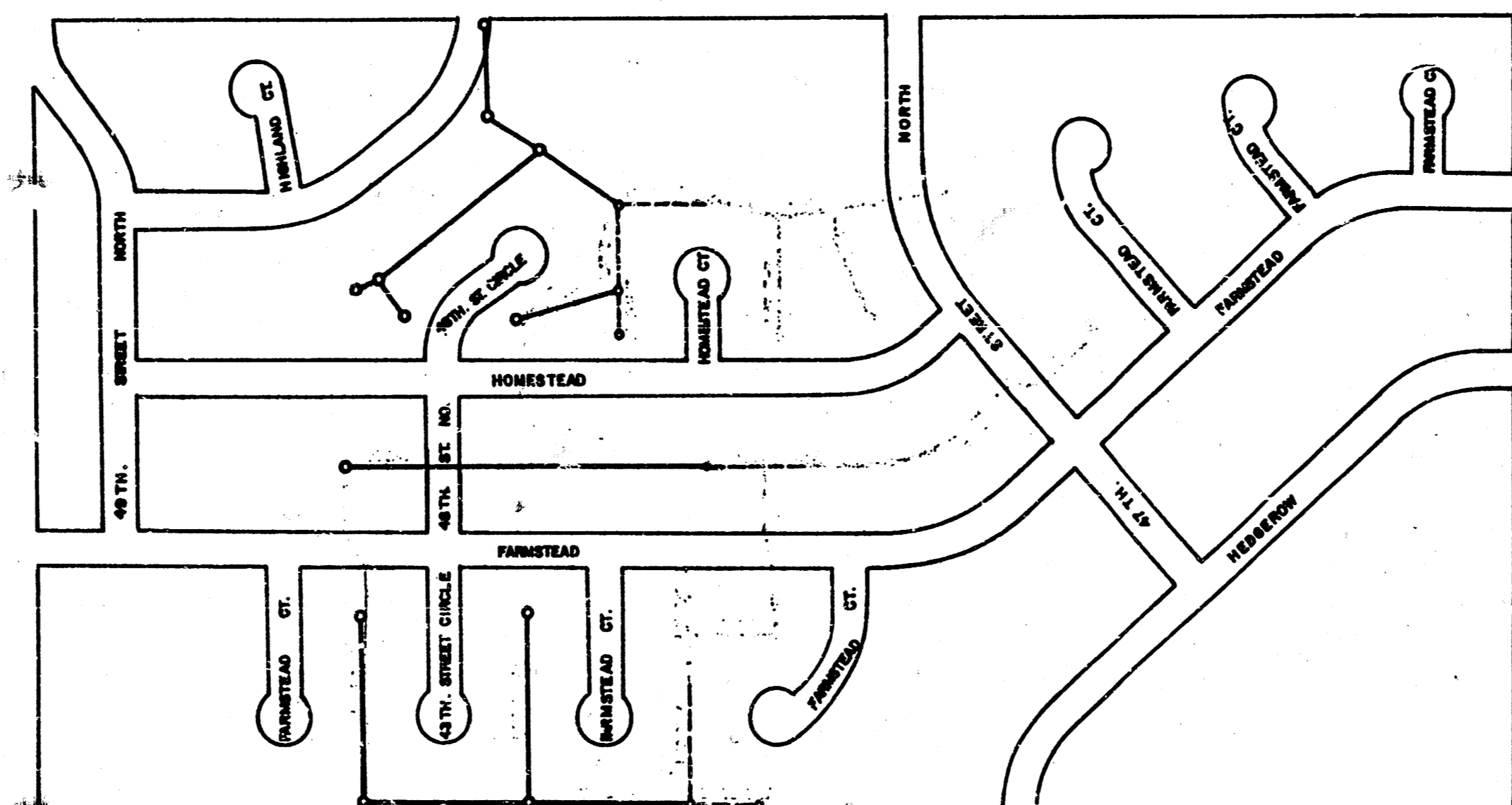


PLANS
FOR
SANITARY SEWER EXTENSIONS
KAPPELMAN'S BEL AIRE HEIGHTS

PHASE III

PROJECT NO. 468-76-245-80001-000-000-196

1988



AS CONSTRUCTED

All Pipe is PVC, SDR 35, All Manholes are Type P Standard, Except where noted in the Profiles.

APPROVED AS NOTED
By CITY ENGINEER OF WICHITA

Sanitary Sewers _____
Storm Sewers _____
Driveway Approaches _____
Water Mains _____
Paving _____

NOTE TO CONTRACTOR

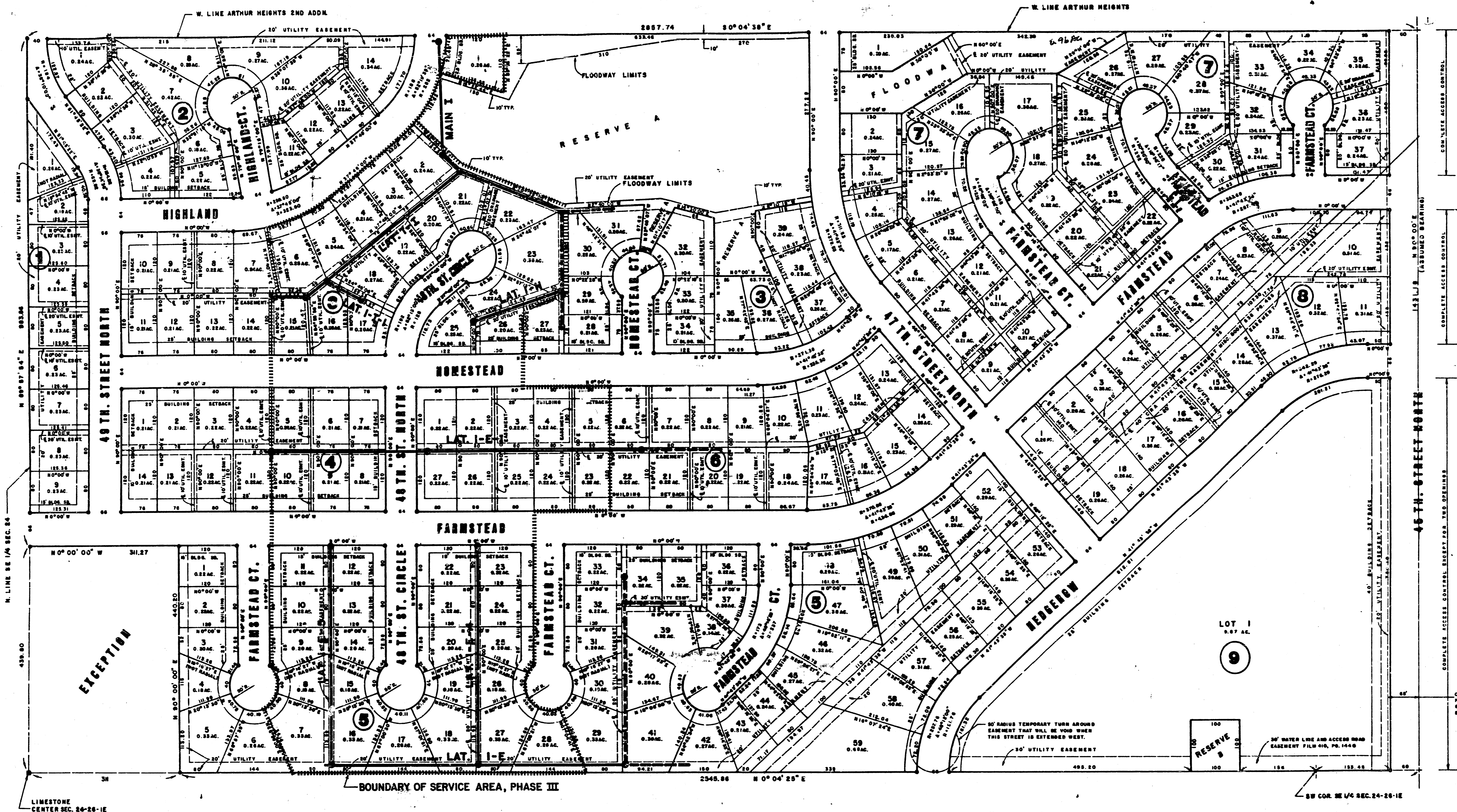
This project will be constructed under the supervision of the CITY ENGINEER and conforming to the SPECIFICATIONS of the CITY OF WICHITA. The CONTRACTOR will pay the City of Wichita for all costs of plan review, inspection and booking per contract.



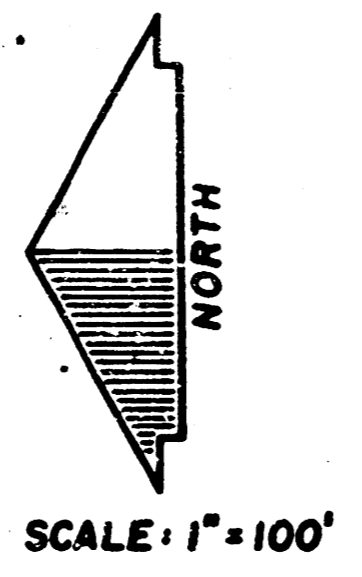
REISS & GOODNESS ENGINEERS
2100 WEST 21ST STREET
WICHITA, KANSAS 67205
(316) 432-0205

10-5-88 SE 1188 SHEET 1 OF 10

**FILMED FROM THE BEST
AVAILABLE COPY**



SANITARY SEWER EXTENSIONS
KAPPELMAN'S
BEL AIRE HEIGHTS
 AN ADDITION TO
 SEDGWICK COUNTY, KANSAS



1980

LEGEND
 3/4" IRON PIPE

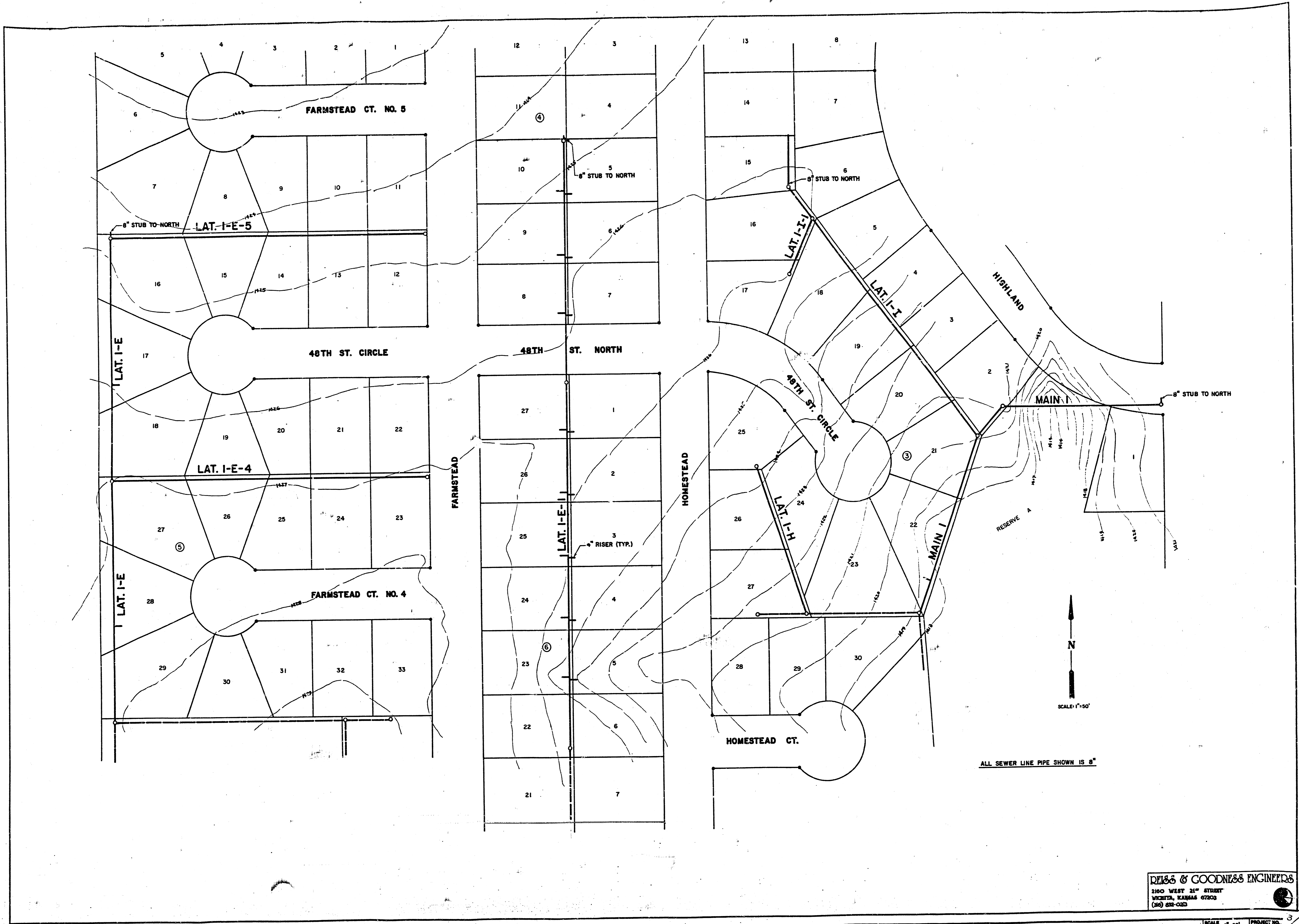
MINIMUM BUILDING PAD ELEVATIONS		
LOT	BLOCK	ELEVATION
1,2	3	1,421.0
21,22	3	1,421.0
30-32	3	1,421.0
35-39	3	1,421.0
1,2	7	1,408.0
15	7	1,406.0
16	7	1,405.0
17,26	7	1,404.0
25	7	1,404.0

Reiss and Goodness Engineers

2800 W. 51st STREET WICHITA, KS. 67203

10-5 88
 SE 1108
 SHEET 2 OF 10

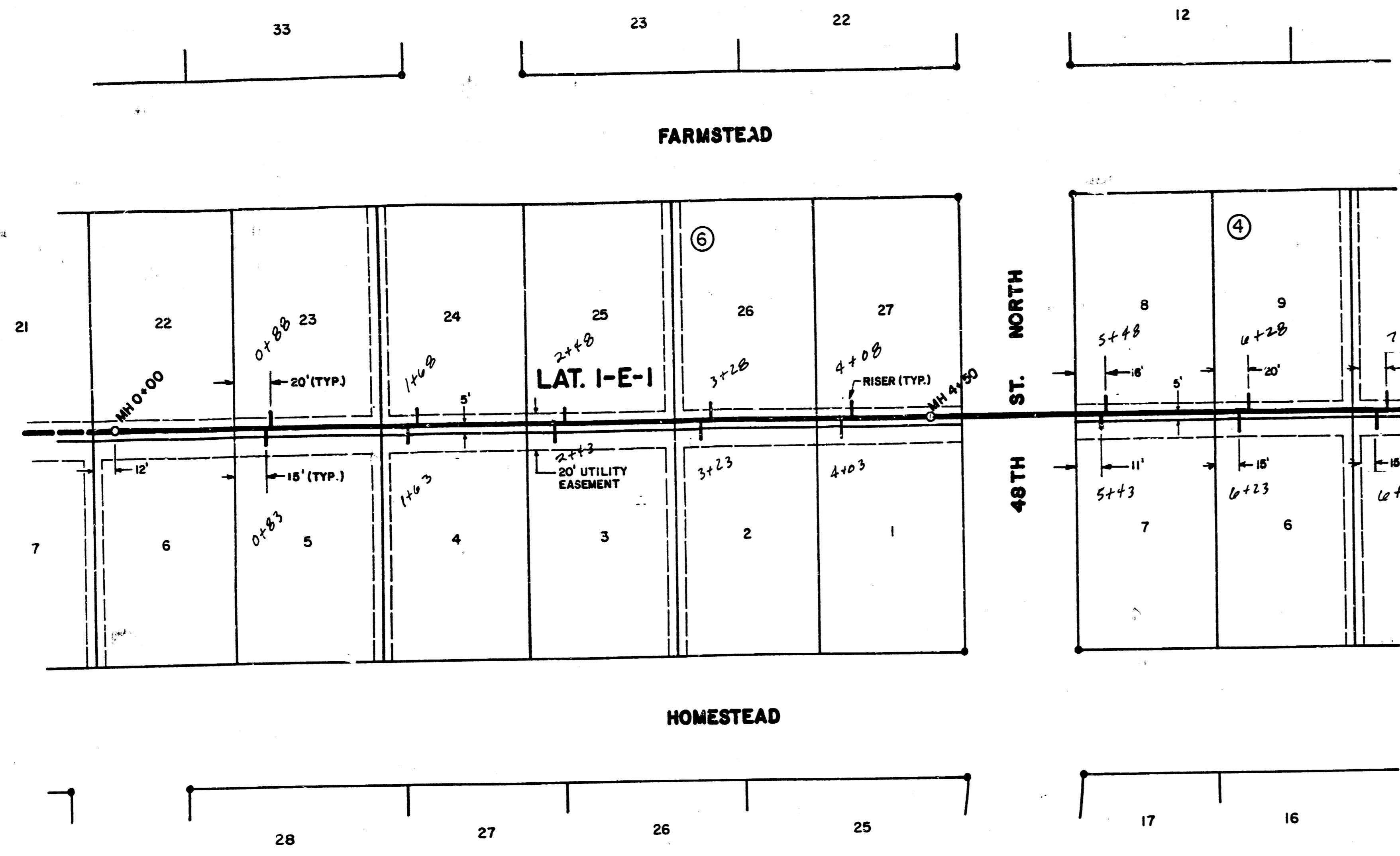
FILMED FROM THE BEST AVAILABLE COPY



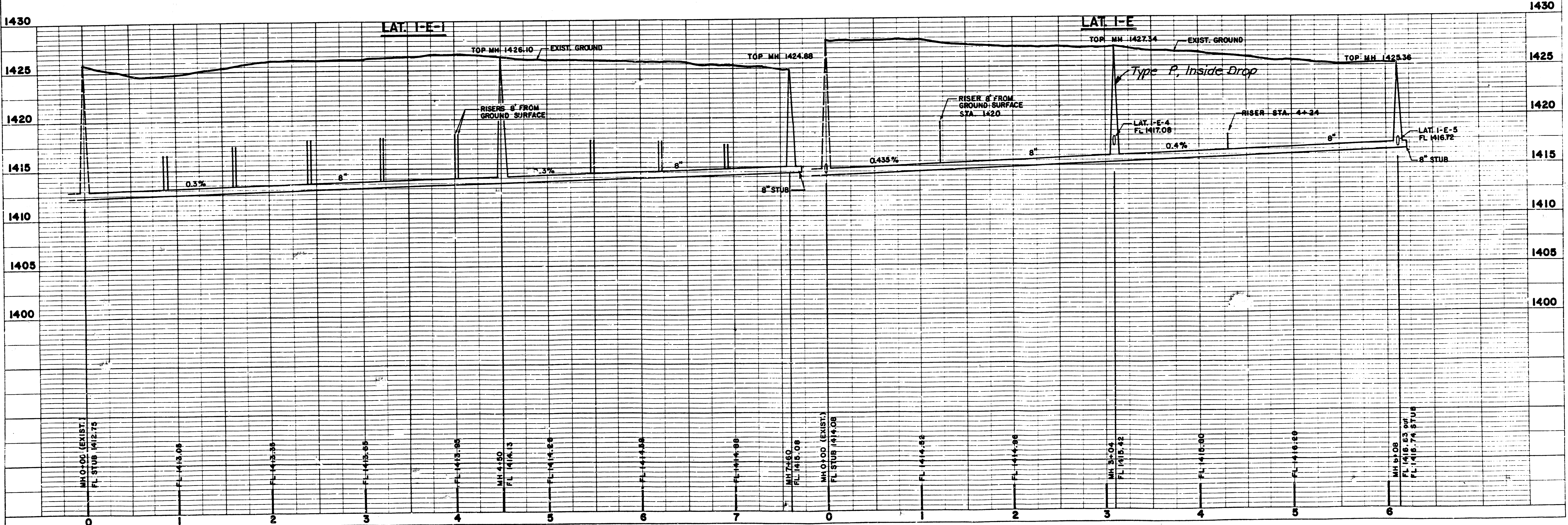
DEISS & GOODNESS ENGINEERS
 2160 WEST 21ST STREET
 WICHITA, KANSAS 67203
 (913) 632-0222

DESIGNER	DRAWN BY	CHECKED BY	DESIGNED BY	PROJECT	CUSTOMER
	DEJ		CS	SANITARY SEWER EXTENSIONS-PHASE III	KAPPELMAN'S BEL AIRE HEIGHTS
SCALE 1"=50' PROJECT NO. 3 DATE 10-5-88 SHEET 3 OF 10					

FILMED FROM THE BEST AVAILABLE COPY



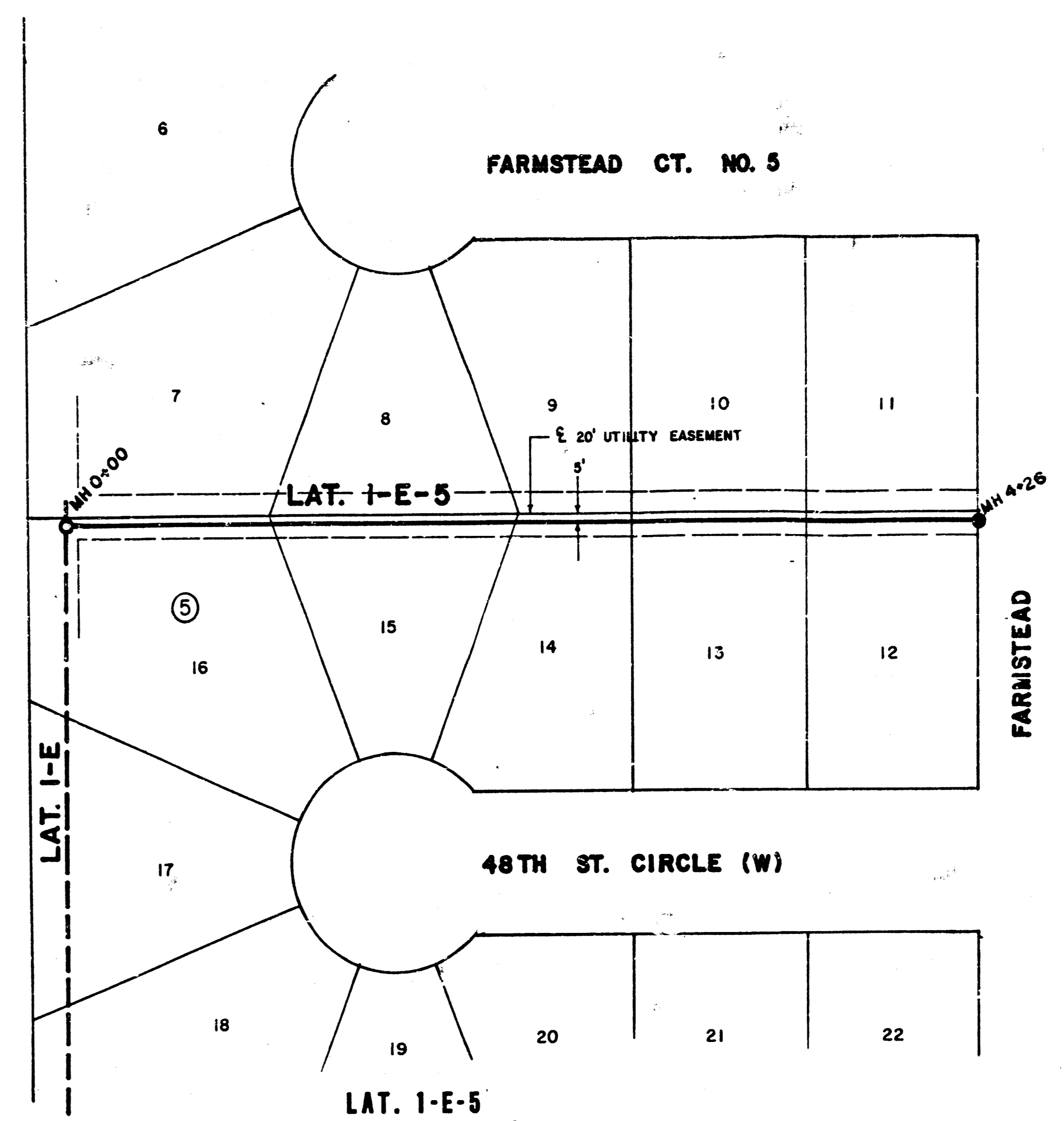
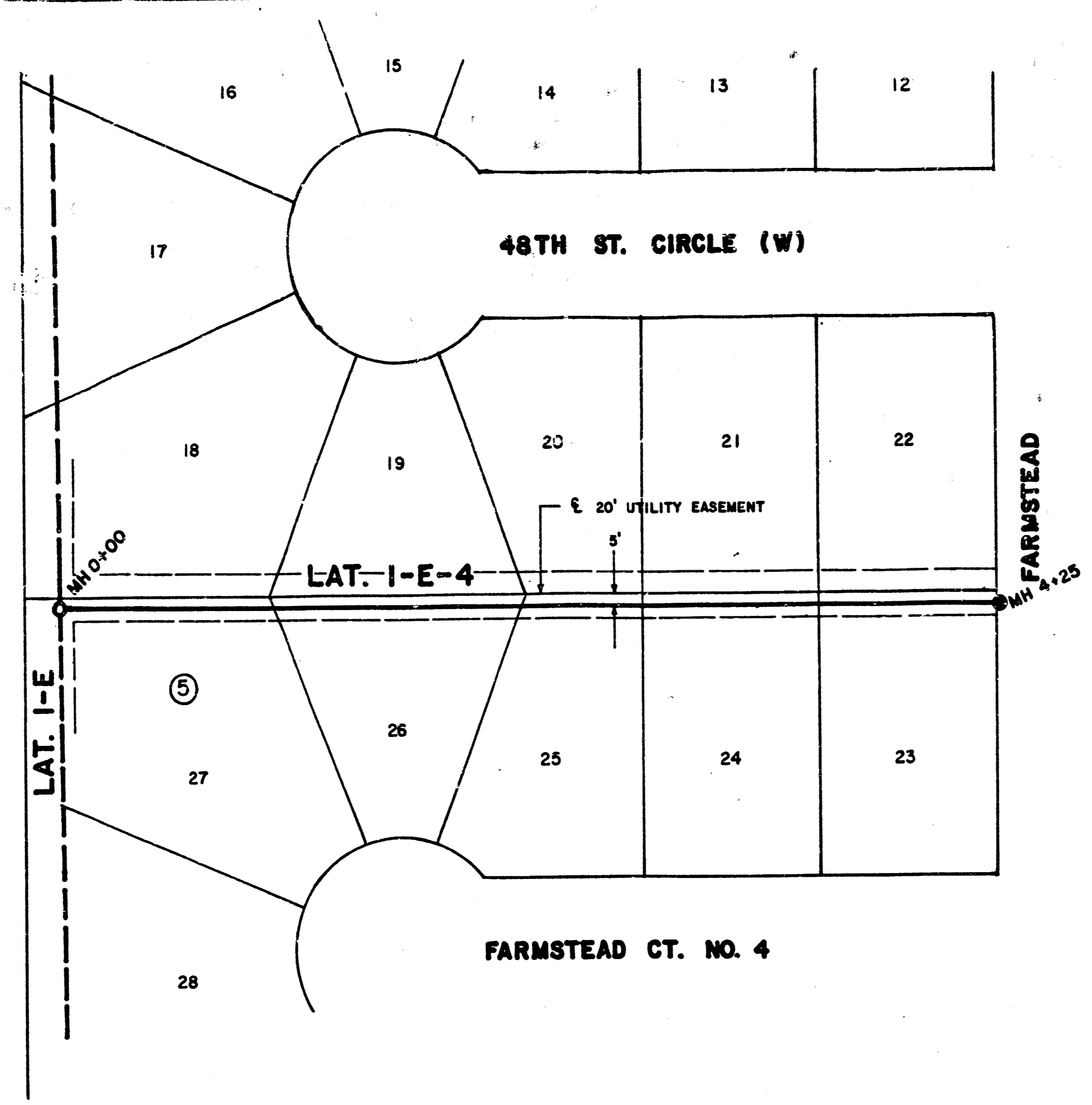
SCALE
 PLAN: 1" = 50'
 PROFILE: VERT. - 1" = 5'
 HORZ. - 1" = 50'



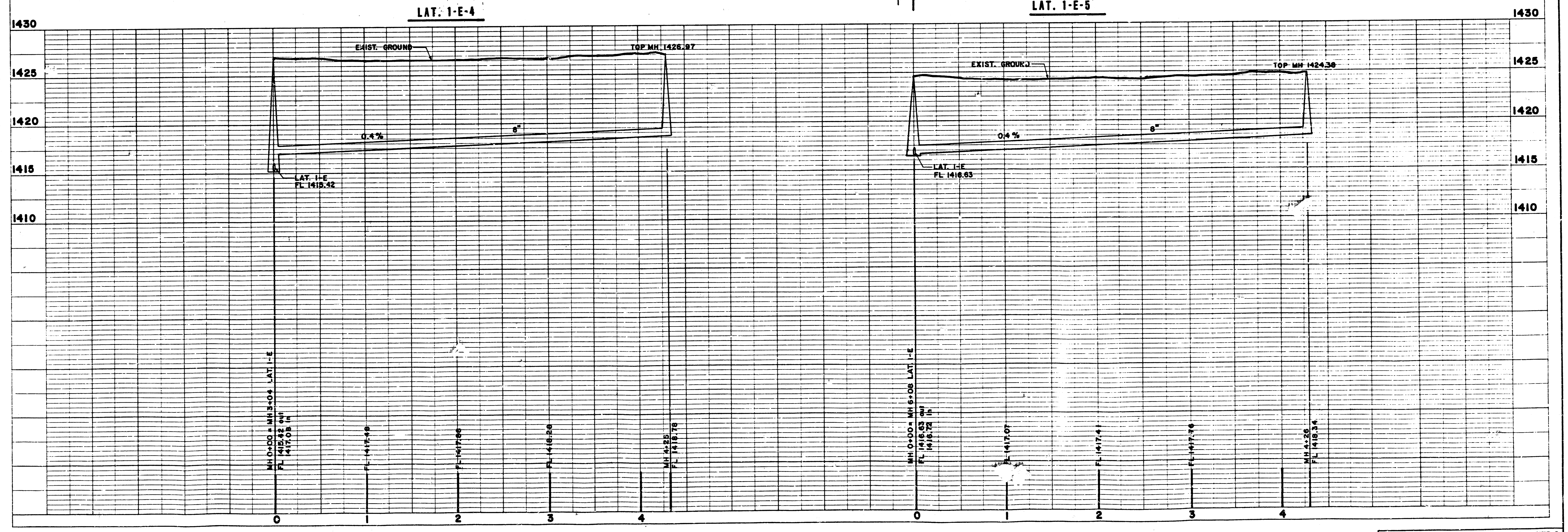
REVISION	DRAWN BY	CHECKED BY	DESIGNED BY	PROJECT	CUSTOMER	SCALE NOTED	PROJECT NO.
	DEJ		C G	SANITARY SEWER EXTENSIONS-PHASE III	KAPPELMAN'S BEL AIRE HEIGHTS	DATE 10-5-88	SHEET 4 OF 10

DEISS & GOODNESS ENGINEERS
 2160 WEST 21ST STREET
 WICHITA, KANSAS 67203
 (316) 622-0285

FILMED FROM THE BEST AVAILABLE COPY

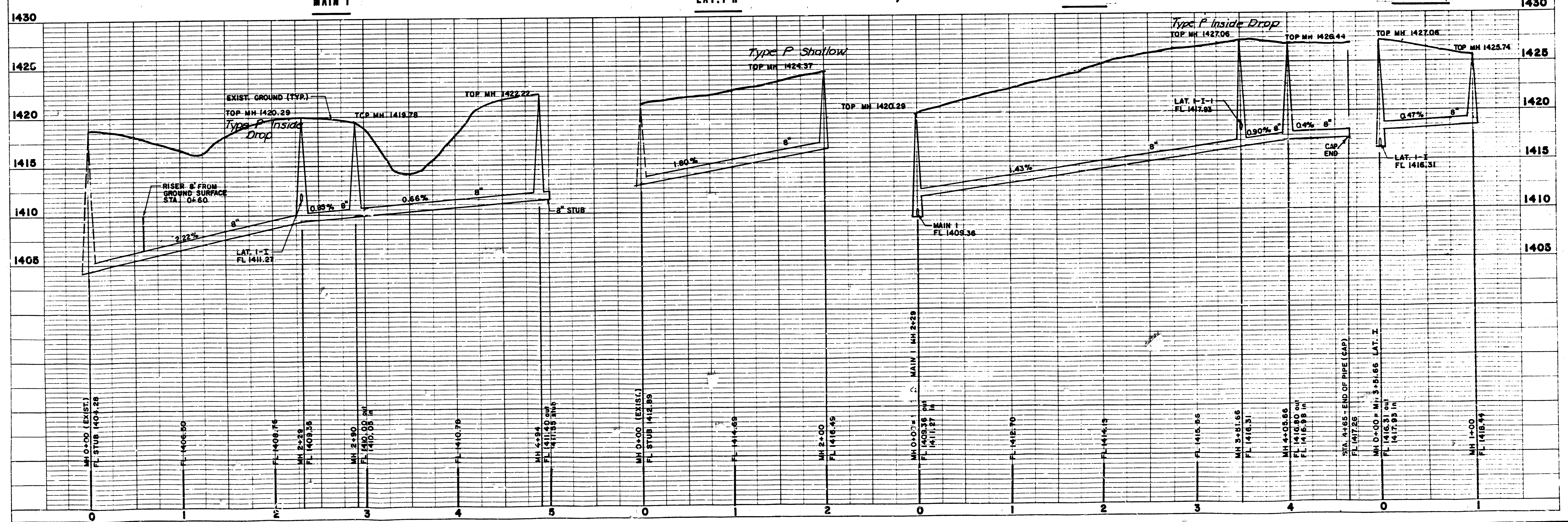
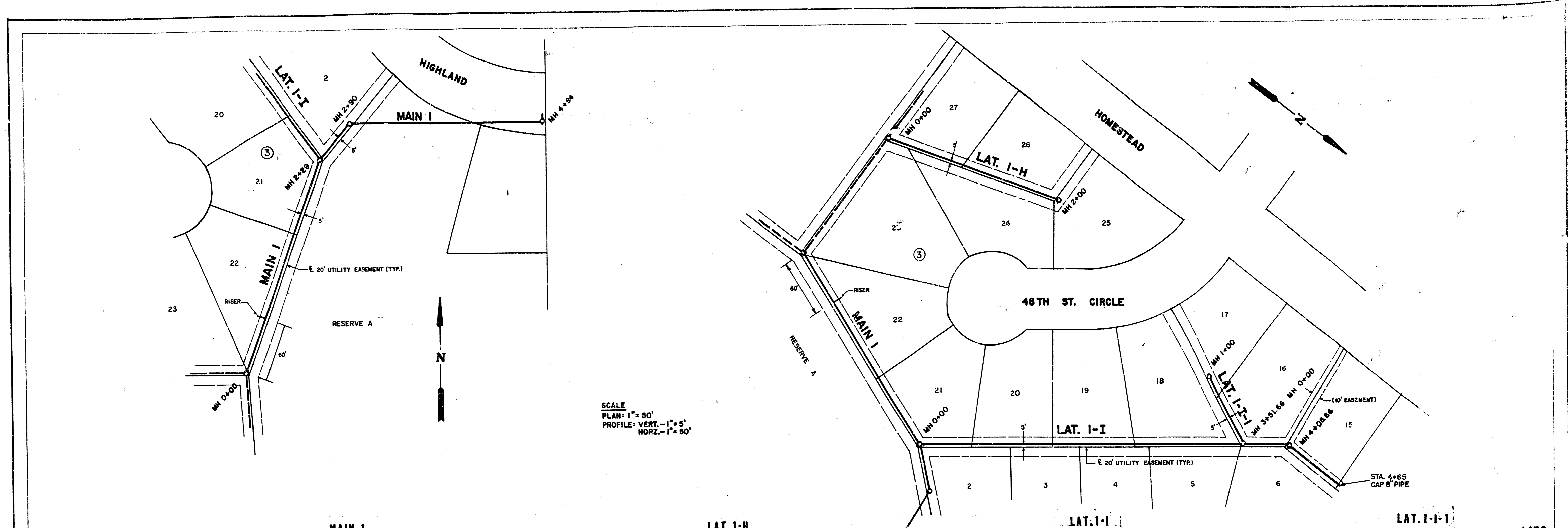


SCALE
 PLAN: 1" = 50'
 PROFILE: VERT. - 1" = 5'
 HORZ. - 1" = 50'



DEISS & GOODNESS ENGINEERS
 2100 WEST 21ST STREET
 WICHITA, KANSAS 67203
 (316) 832-0253

FILMED FROM THE BEST AVAILABLE COPY



DEISS & GOODNESS ENGINEERS 2160 WEST 21 ST STREET WICHITA, KANSAS 67203 (316) 832-0283					SCALE NOTED DATE 10-5-88		PROJECT NO. 58148 SHEET 6 OF 10	
REVISION DRAWN BY CHECKED BY DESIGNED BY PROJECT:	SANITARY SEWER EXTENSIONS-PHASE III			CUSTOMER KAPPLEMAN'S BEL AIRE HEIGHTS		FILMED FROM THE BEST AVAILABLE COPY		