

PLANS
FOR
SANITARY SEWER SYSTEM

FOR
LOTS 4 & 5, BLOCK ONE

KEELER INDUSTRIAL TRACTS
SEDGWICK COUNTY, KANSAS

CITY OF WICHITA PRIVATE PROJECT NO. 468-76-245-80001-000-000-113

1987

APPROVED AS NOTED
By CITY ENGINEER OF WICHITA
Sanitary Sewers 4/28/87
Storm Sewers _____
Driveway Approaches _____
Water Mains _____
Paving _____

NOTE TO CONTRACTOR
This project will be constructed under the supervision of the CITY ENGINEER and conforming to the SPECIFICATIONS of the CITY OF WICHITA. The CONTRACTOR will pay the City of Wichita for all costs of plan review, inspection and testing per contract.

INDEX OF SHEETS
SHEET 1 TITLE SHEET
SHEET 2 MAIN I

NOTE:
CONTRACTOR HAS THE OPTION OF
USING THE TYPE "C" MANHOLE WITH
APPROVAL OF THE ENGINEER



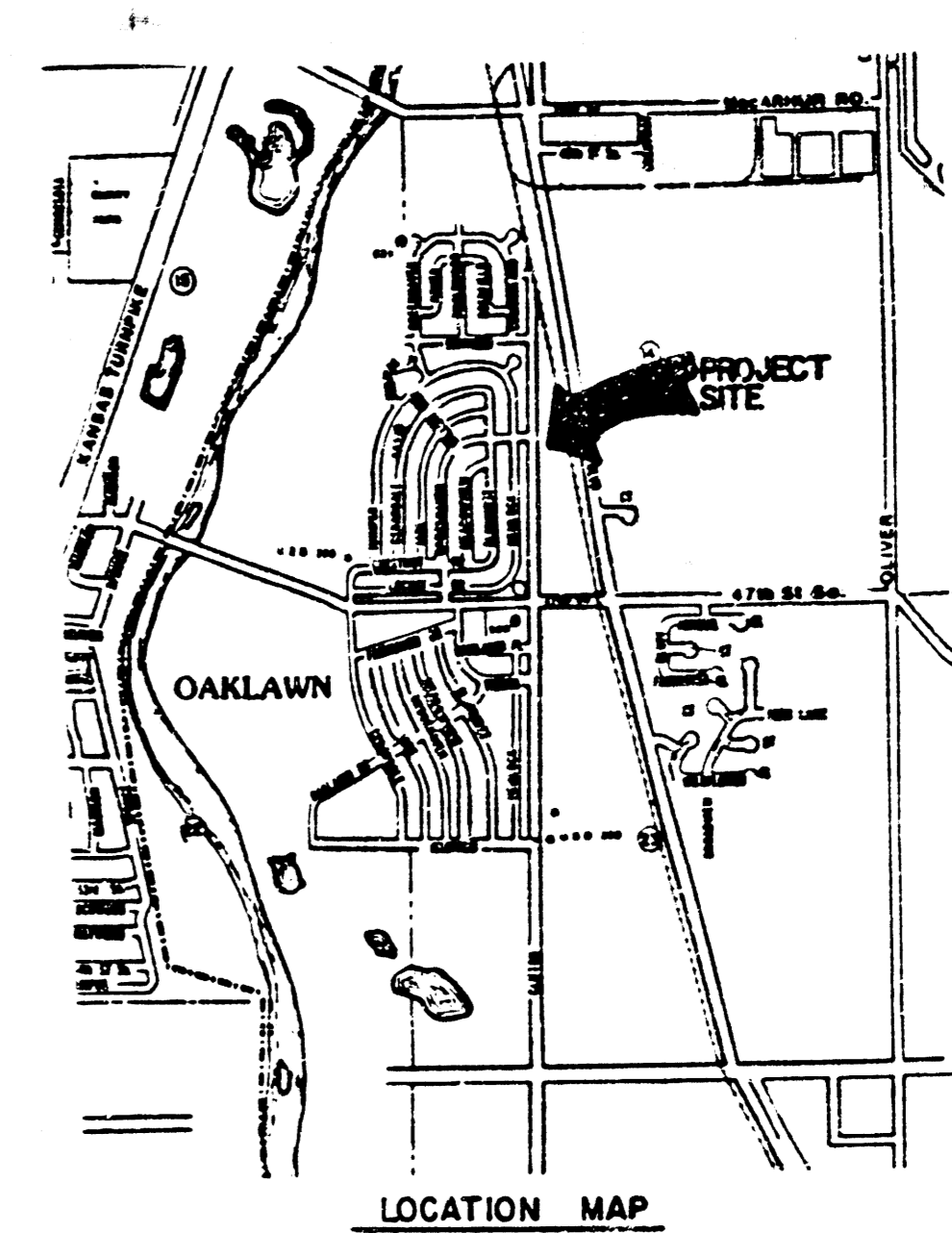
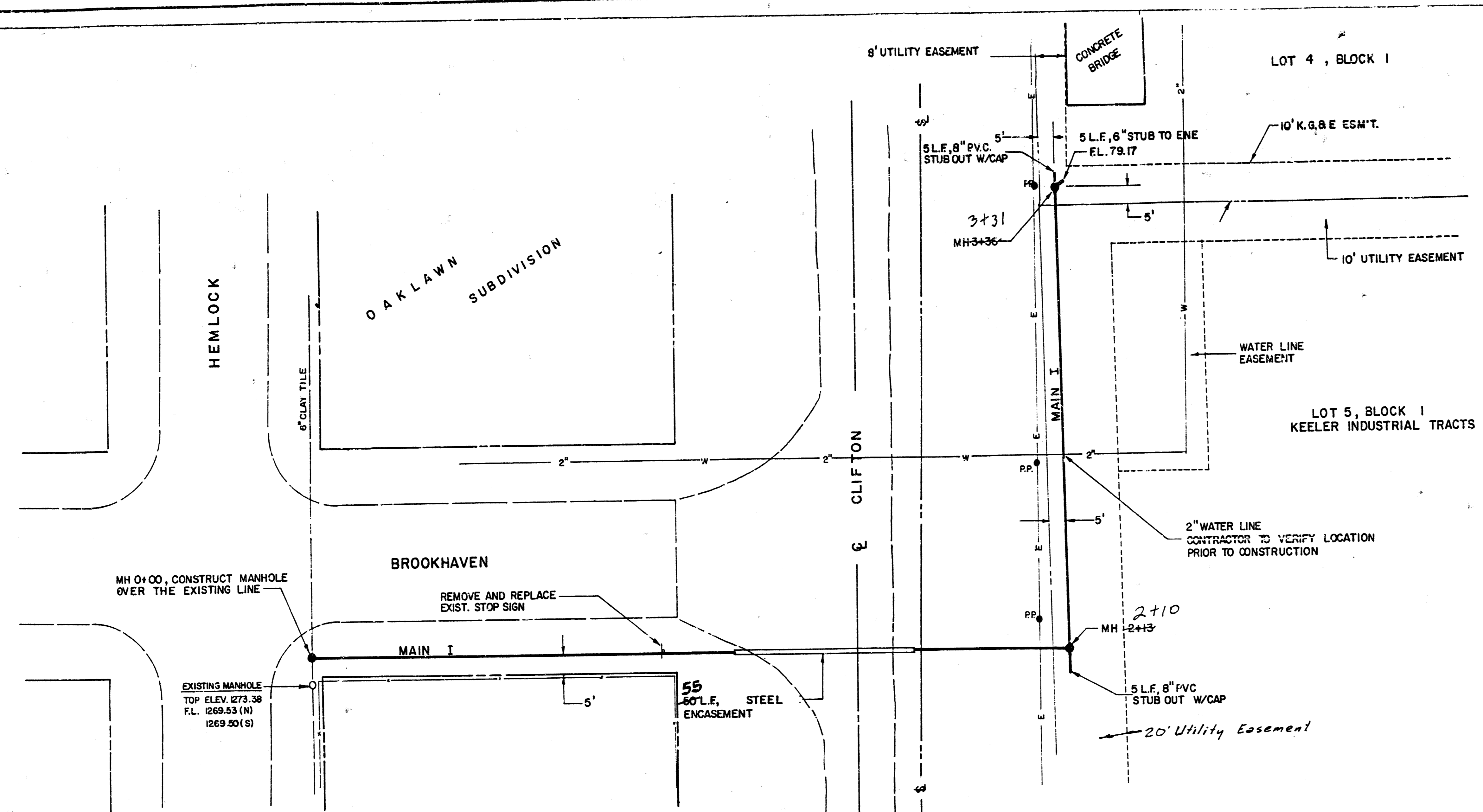
*Booked
RAC*

"AS BUILT" 10-21-88

REISS & GOODNESS ENGINEERS
2100 WEST 21ST STREET
WICHITA, KANSAS 67204
(316) 832-0213

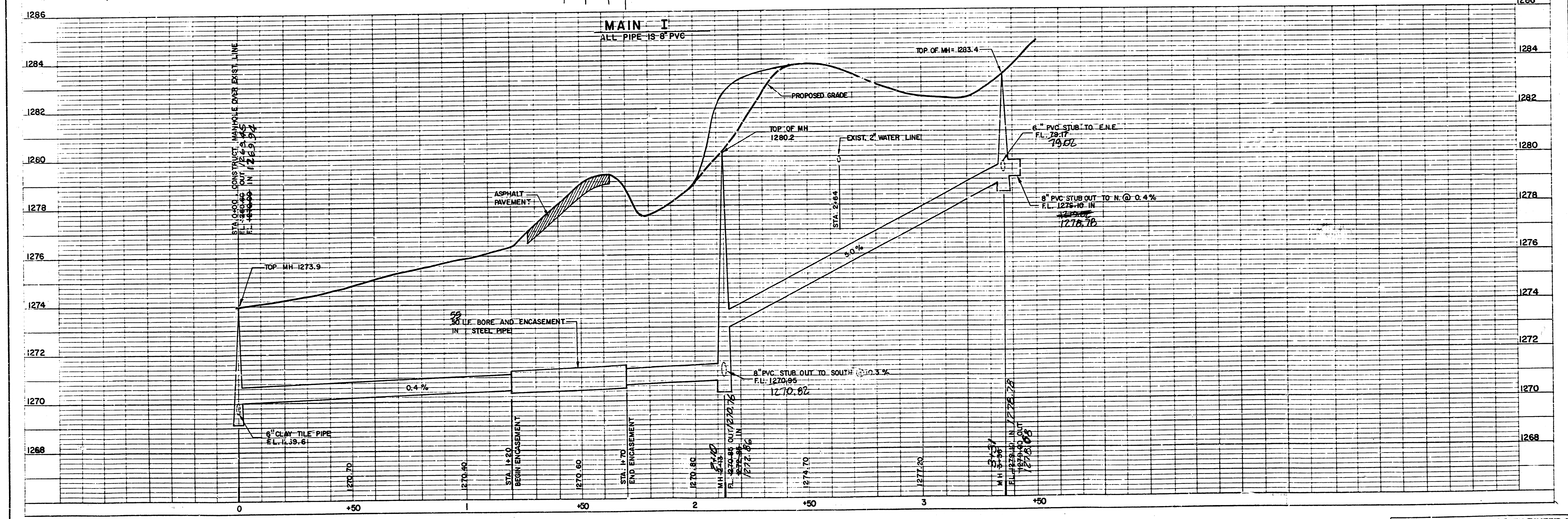
SCALE _____ PROJECT NO. SE 0187
DATE 4/3/87 SHEET 1 OF 2

FILMED FROM THE BEST
AVAILABLE COPY



SCALE
 PLAN 1" = 20'
 PROFILE 1" = 20'
 HORIZ. 1" = 20'
 VERT. 1" = 2'

BM - RAILROAD SPIKE IN H.L.P., 50' NW OF SECTION CORNER AT 47th., ST. SO. AND CLIFTON. EL. 1271.20
 ALL MANHOLES ARE TYPE "P" OR "C" MANHOLES OR SHALLOW TYPE "P" OR "C" MANHOLES



REISS & GOODNESS ENGINEERS
 2100 WEST 21ST STREET
 WICHITA, KANSAS 67203
 (316) 852-0285

"AS BUILT" 10-21-88

REVISION	DRAWN BY	CHECKED BY	DESIGNED BY	PROJECT	CITY OF WICHITA PRIVATE PROJECT NO. 468-76-245-80001 - 000-000-113	CUSTOMER	LOT 4 & LOT 5 BLOCK 1, KEELER INDUSTRIAL TRACTS 3	SCALE GIVEN	DATE 4/3/87	PROJECT NO. SP-587	SHEET 2 OF 2
----------	----------	------------	-------------	---------	--	----------	---	-------------	-------------	--------------------	--------------

FILMED FROM THE BEST AVAILABLE COPY