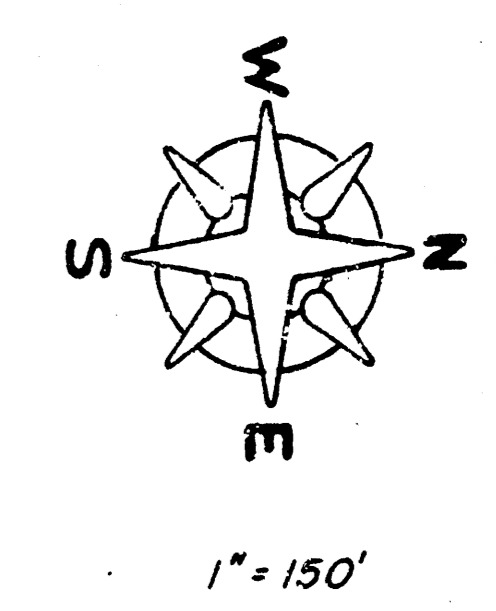
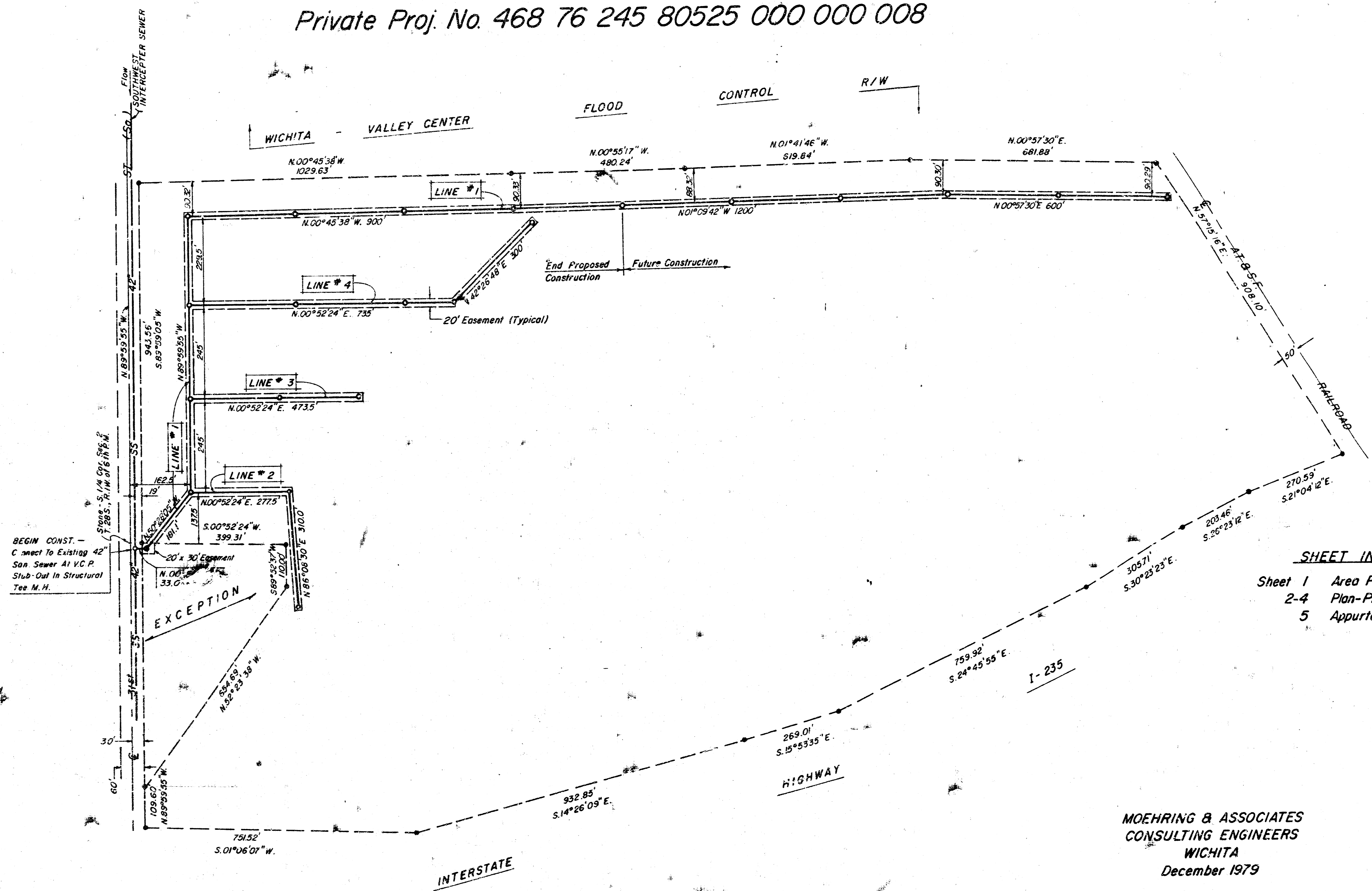


**PRIVATE SANITARY SEWERS
SERVING
KEELER LAKE PROPERTY IN
W. 1/2 Section 2, T. 28 S., R. 2 E. Of 6th. P.M.
Private Proj. No. 468 76 245 80525 000 000 008**

SANITARY SEWER EASEMENTS
in W 1/2 Sec. 2 Recorded at

SANITARY SEWER EASEMENT
in E 1/2 Sec. 2 Recorded at
Film 396 Page 1056

BENCH MARK
East edge of Manhole Rim, 11' N. and
59' E. of S 1/4 Cor., Elev. 102.42,
City Datum.



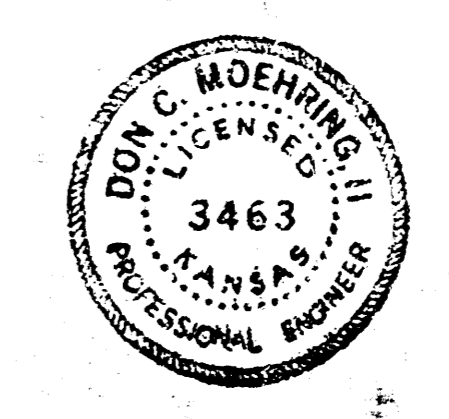
SHEET INDEX

Sheet 1	Area Plan
2-4	Plan-Profile
5	Appurtenances

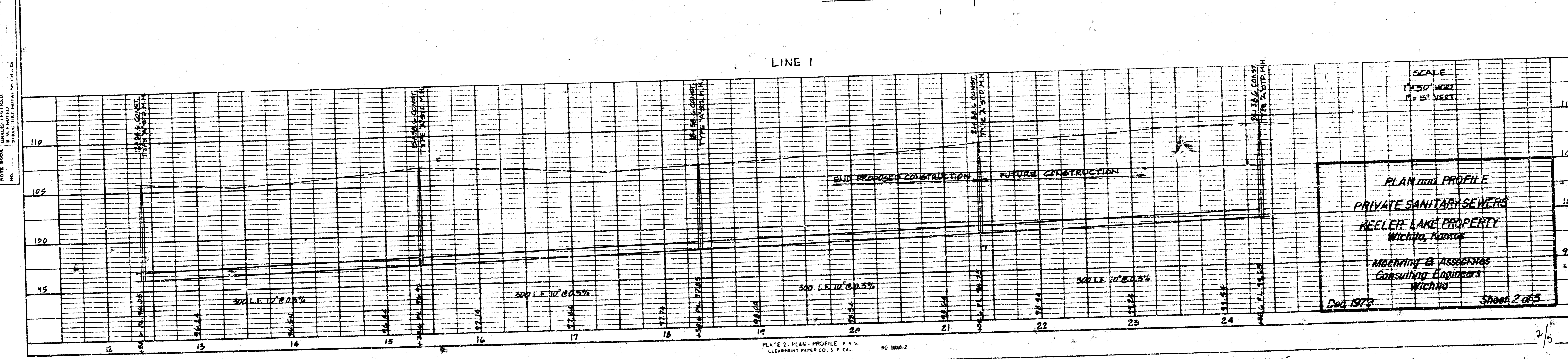
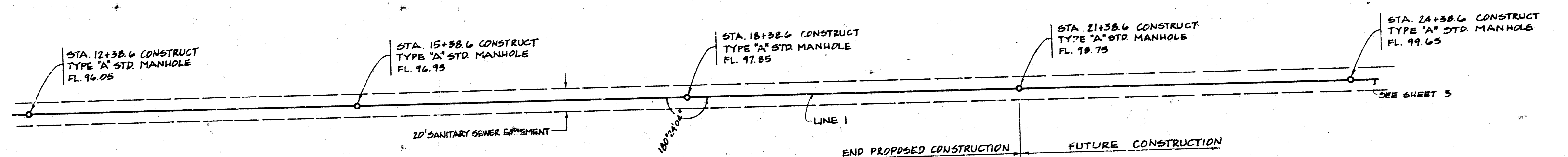
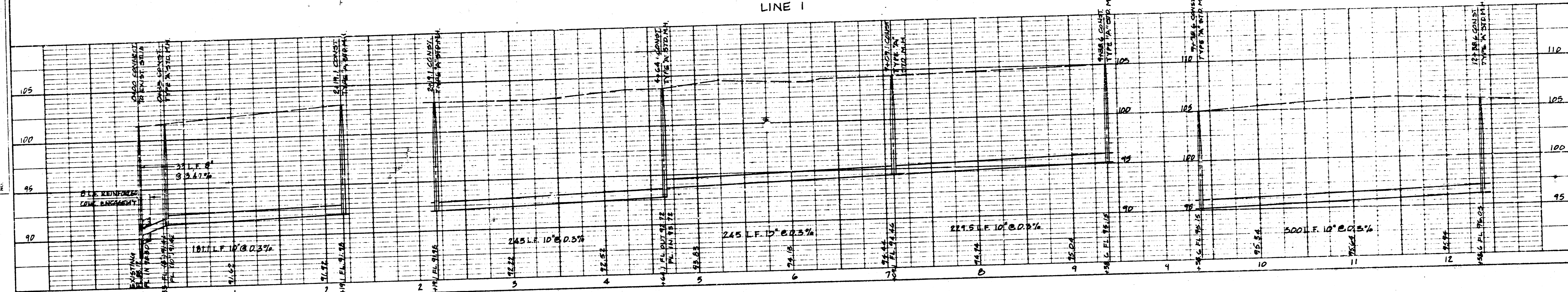
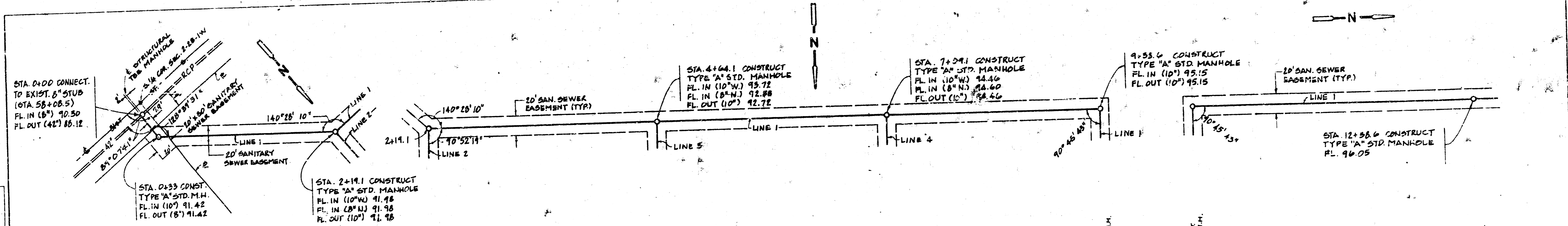
12-31-79
APPROVED AS NOTED
By CITY ENGINEER OF WICHITA
Sanitary Sewers *[Signature]*
Storm Sewers _____
Driveway Approaches _____

NOTE TO CONTRACTOR
This project will be operated under
the supervision of the CITY ENGINEER
of the CITY OF WICHITA, KANSAS.
The CONTRACTOR shall be responsible
for the construction of the project
in accordance with the plans and
specifications.

**MOHRING & ASSOCIATES
CONSULTING ENGINEERS
WICHITA
December 1979**



**FILMED FROM THE BEST
AVAILABLE COPY.....**



PLAN
 SURVEYED BY: [Name]
 DRAWN BY: [Name]
 CHECKED BY: [Name]
 DATE: [Date]

PROFILE
 SURVEYED BY: [Name]
 DRAWN BY: [Name]
 CHECKED BY: [Name]
 DATE: [Date]

SCALE
 1" = 50' HORIZ.
 1" = 5' VERT.

PLAN and PROFILE
 PRIVATE SANITARY SEWERS
 KEELER LAKE PROPERTY
 WICHITA, KANSAS

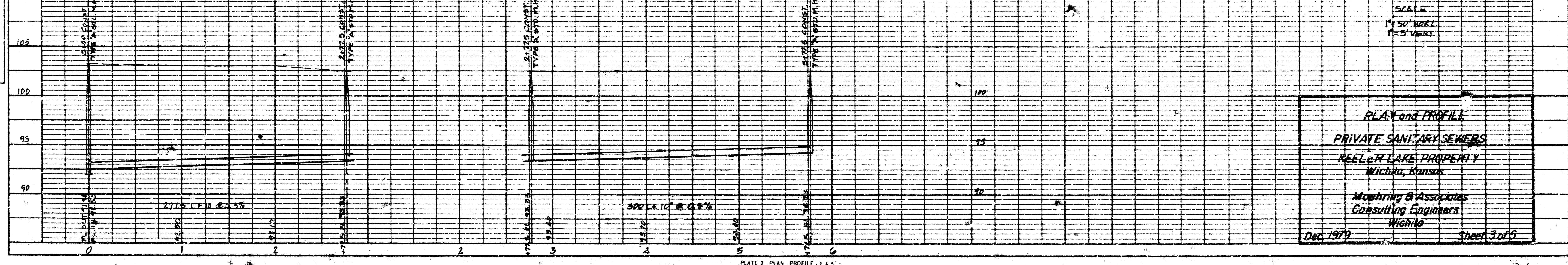
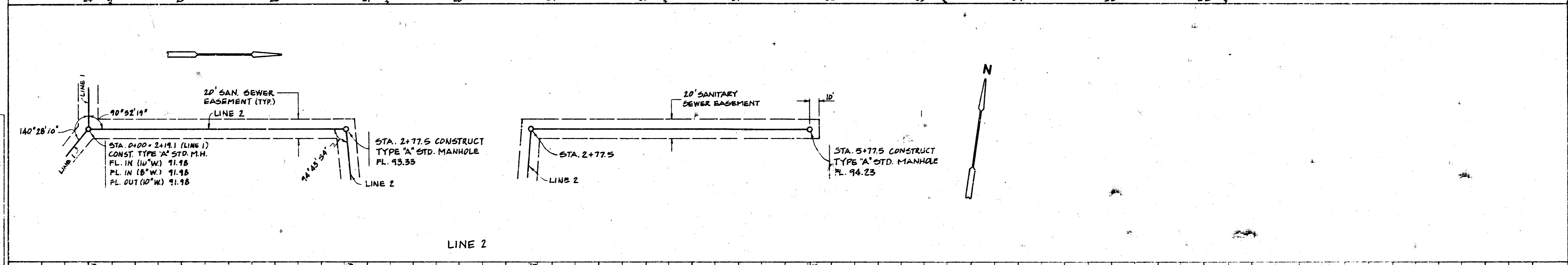
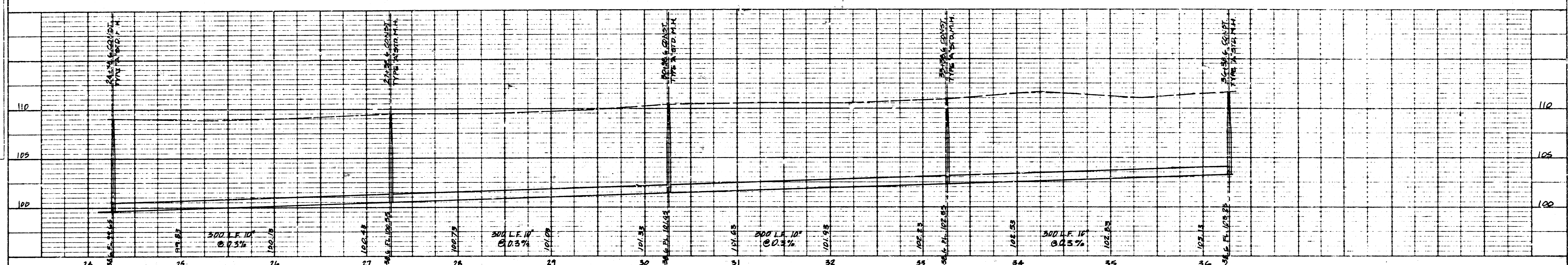
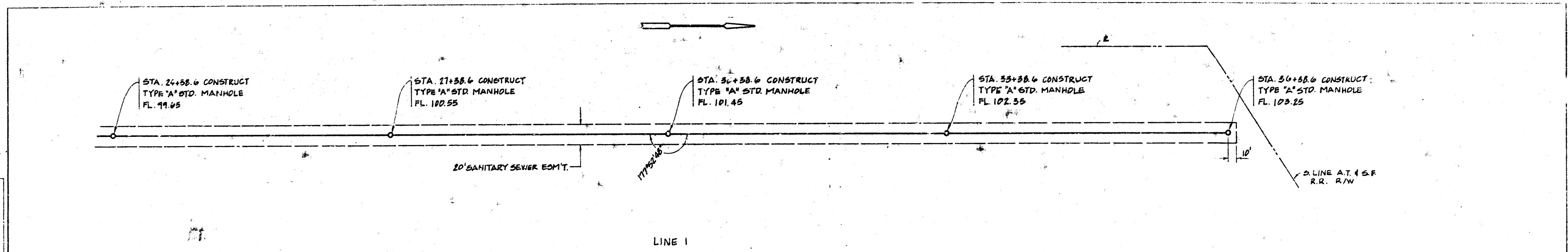
Moehring & Associates
 Consulting Engineers
 WICHITA

Dec. 1979 Sheet 2 of 5

FILMED FROM THE BEST AVAILABLE COPY.....

DATE: _____
 BY: _____
 CHECKED: _____
 APPROVED: _____
 TITLE: _____
 PROJECT: _____
 SHEET: _____

DATE: _____
 BY: _____
 CHECKED: _____
 APPROVED: _____
 TITLE: _____
 PROJECT: _____
 SHEET: _____



SCALE
 1" = 50' HORIZ.
 1" = 5' VERT.

PLAN and PROFILE
 PRIVATE SANITARY SEWERS
 REELET LAKE PROPERTY
 Wichita, Kansas

Moehring & Associates
 Consulting Engineers
 Wichita

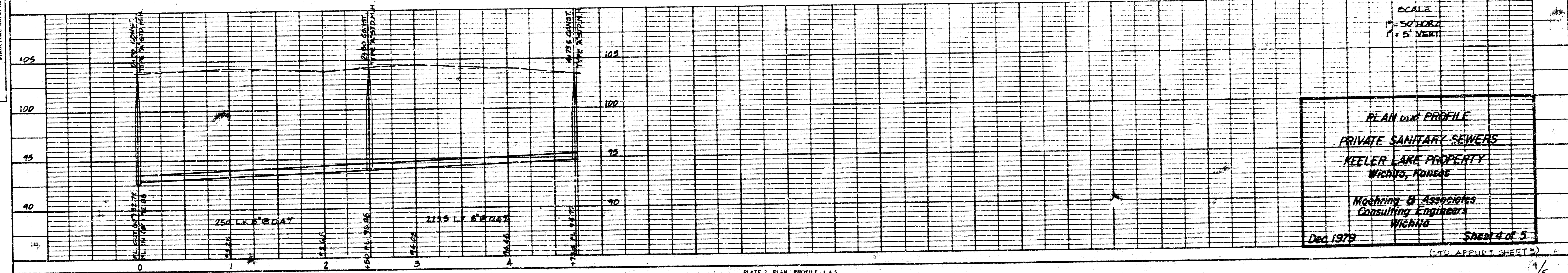
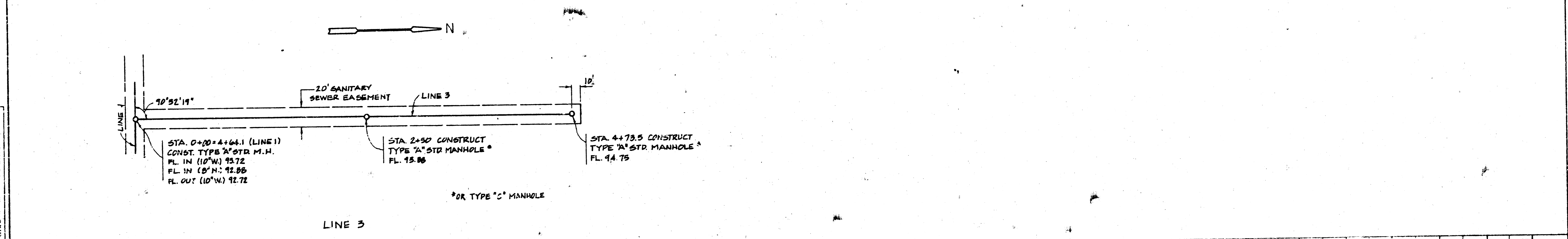
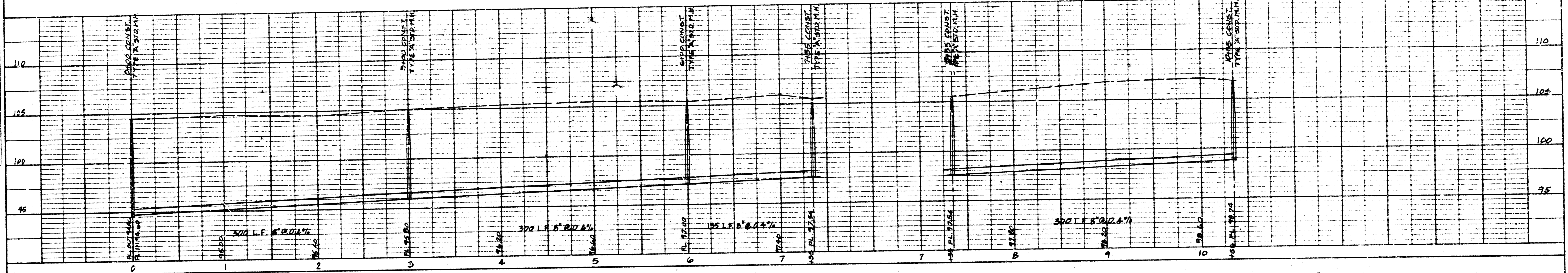
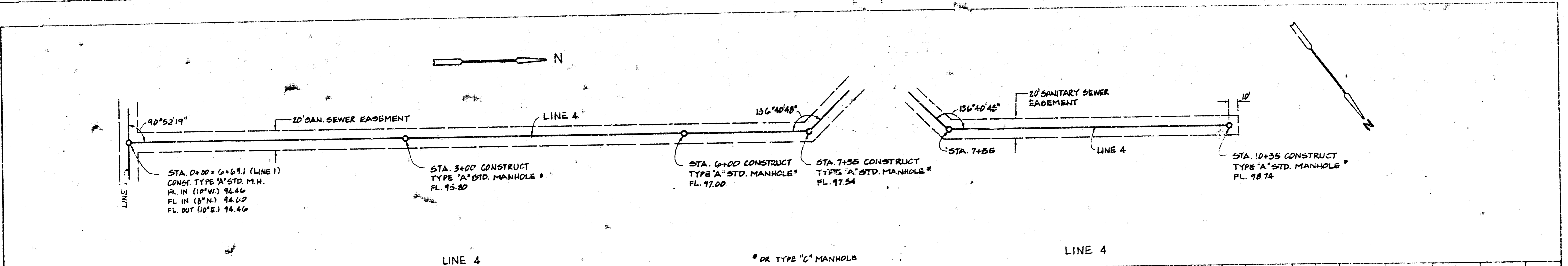
Dec. 1979 Sheet 3 of 5

PLATE 2 PLAN PROFILE 3 & 4
 CLEARPRINT PAPER CO. S.F. CAL. NO. 1000-2

FILMED FROM THE BEST AVAILABLE COPY

PLAN
 DATE: _____
 BY: _____
 CHECKED: _____
 NO. _____

PROFILE
 DATE: _____
 BY: _____
 CHECKED: _____
 NO. _____



SCALE
 1" = 50' HORIZ.
 1" = 5' VERT.

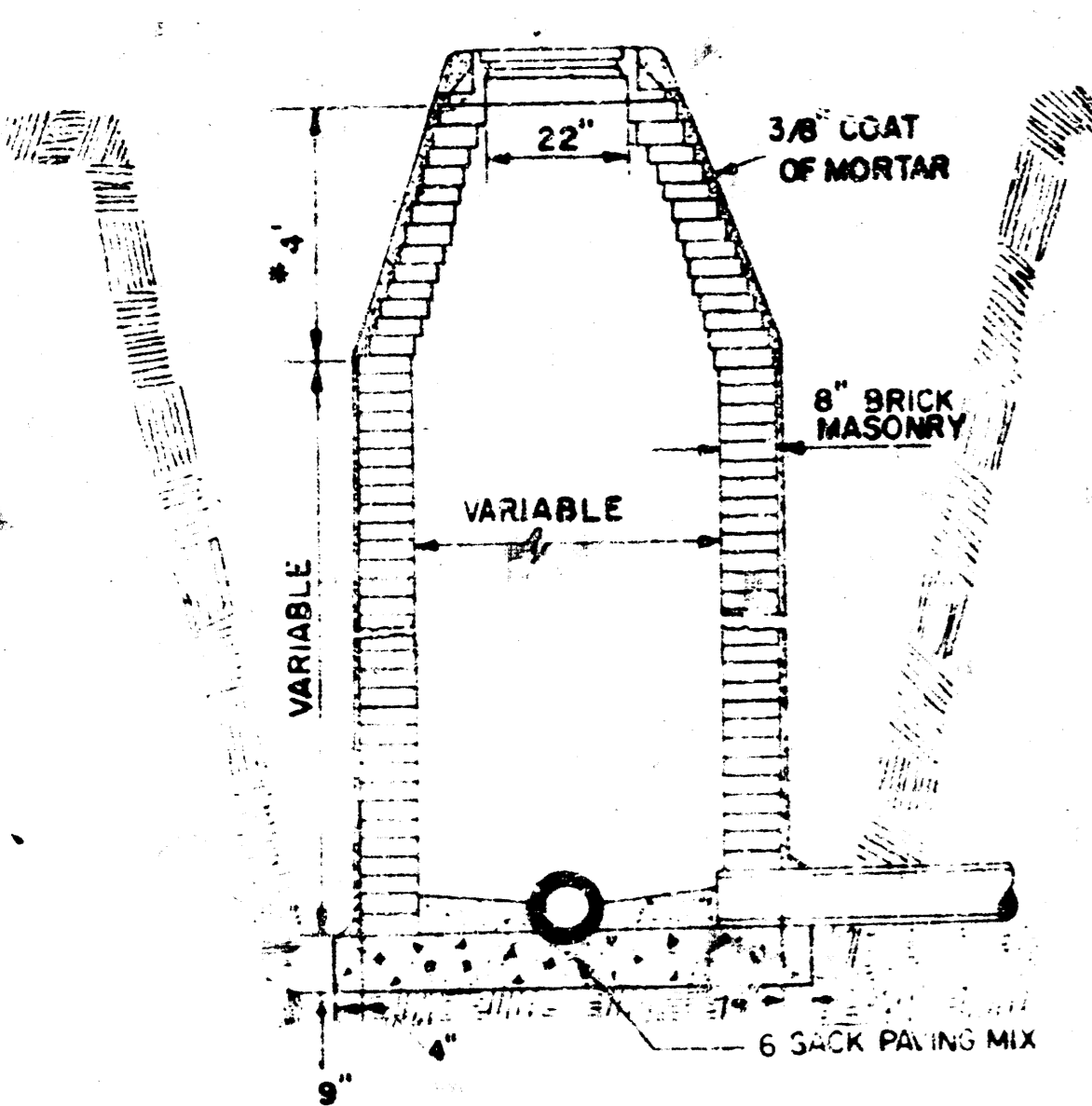
PLAN and PROFILE
 PRIVATE SANITARY SEWERS
 KEELER LAKE PROPERTY
 WICHITA, KANSAS

Moshing & Associates
 Consulting Engineers
 WICHITA

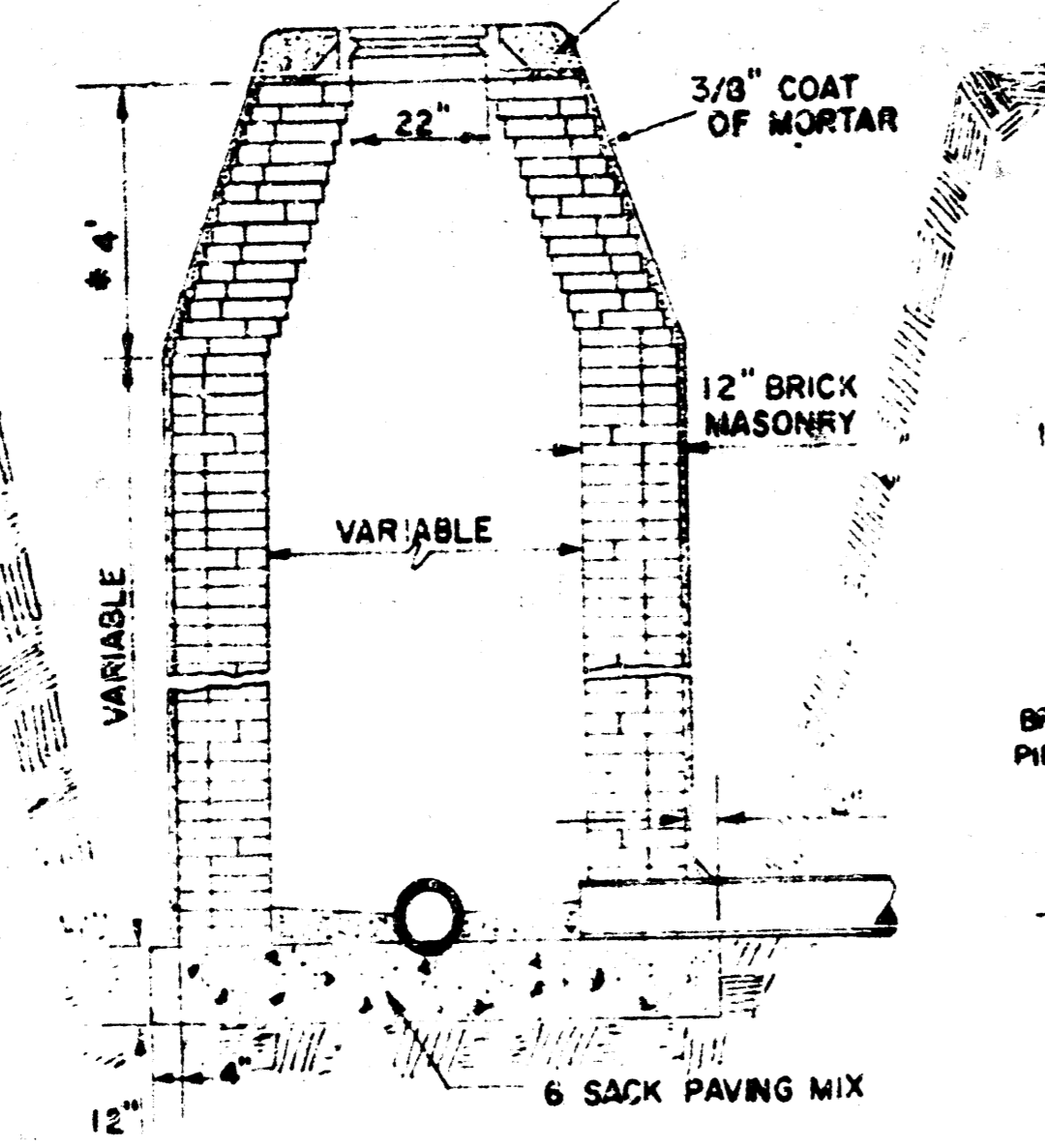
Dec. 1979 Sheet 4 of 5
 (CONT. APPURT. SHEETS)

FILMED FROM THE BEST
 AVAILABLE COPY.....

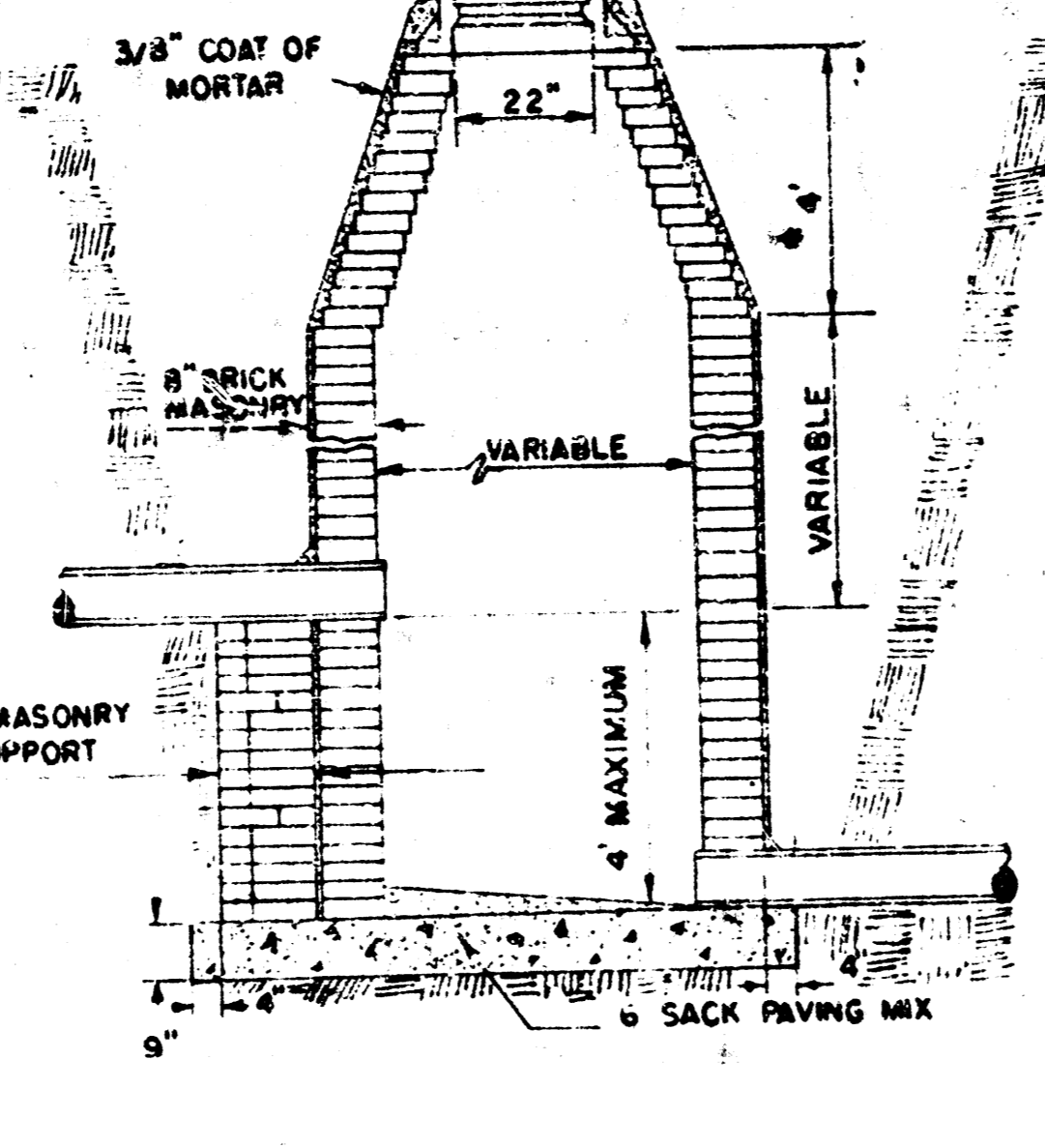
GROUT TO BE PLACED AROUND MANHOLE RING ONLY WHEN MANHOLE IS CONSTRUCTED IN UNPAVED AREAS. (TYPICAL ALL MANHOLES)



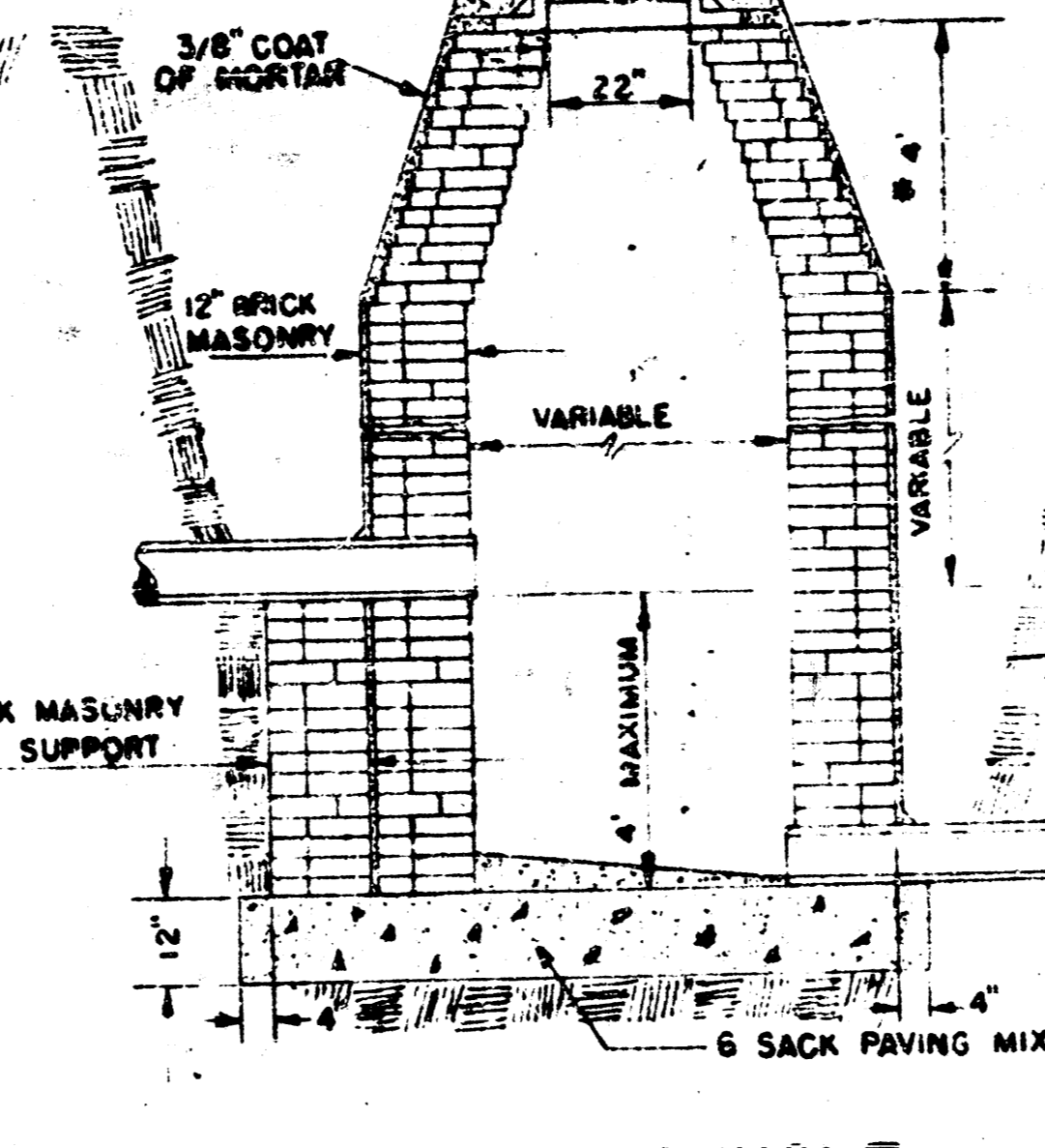
STANDARD MANHOLE TYPE "A"



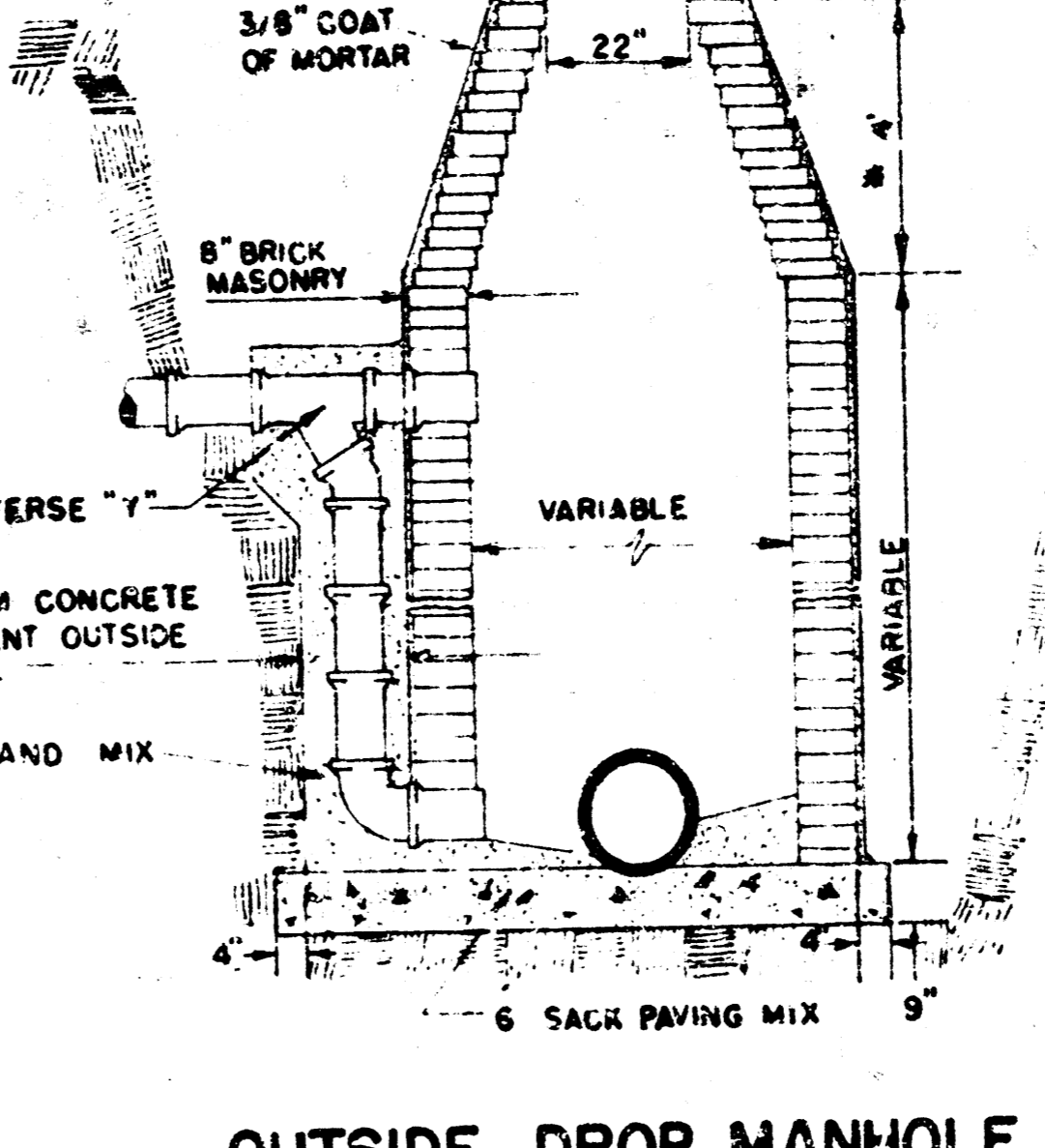
STANDARD MANHOLE TYPE "B"



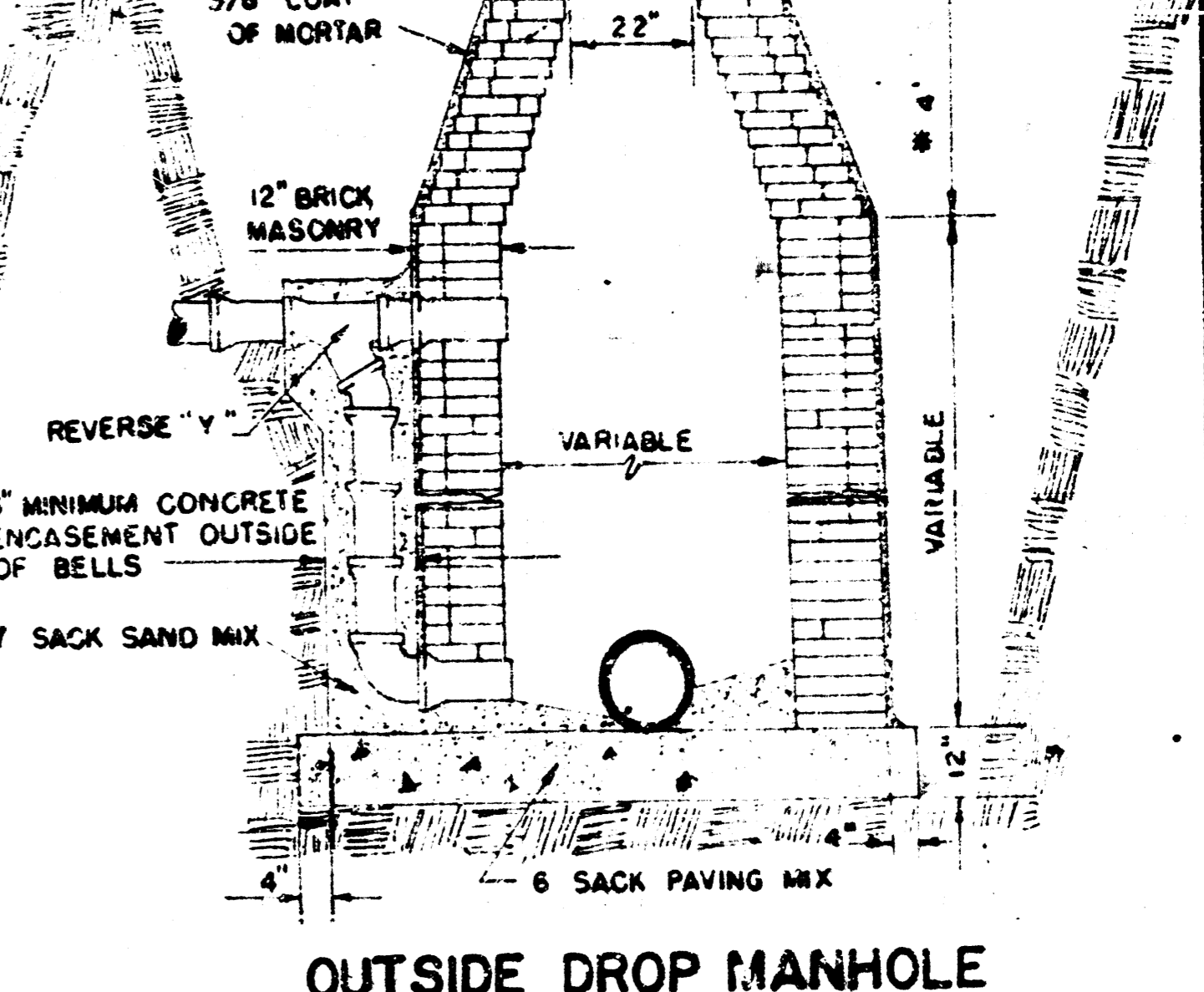
DROP MANHOLE TYPE "A"



DROP MANHOLE TYPE "B"



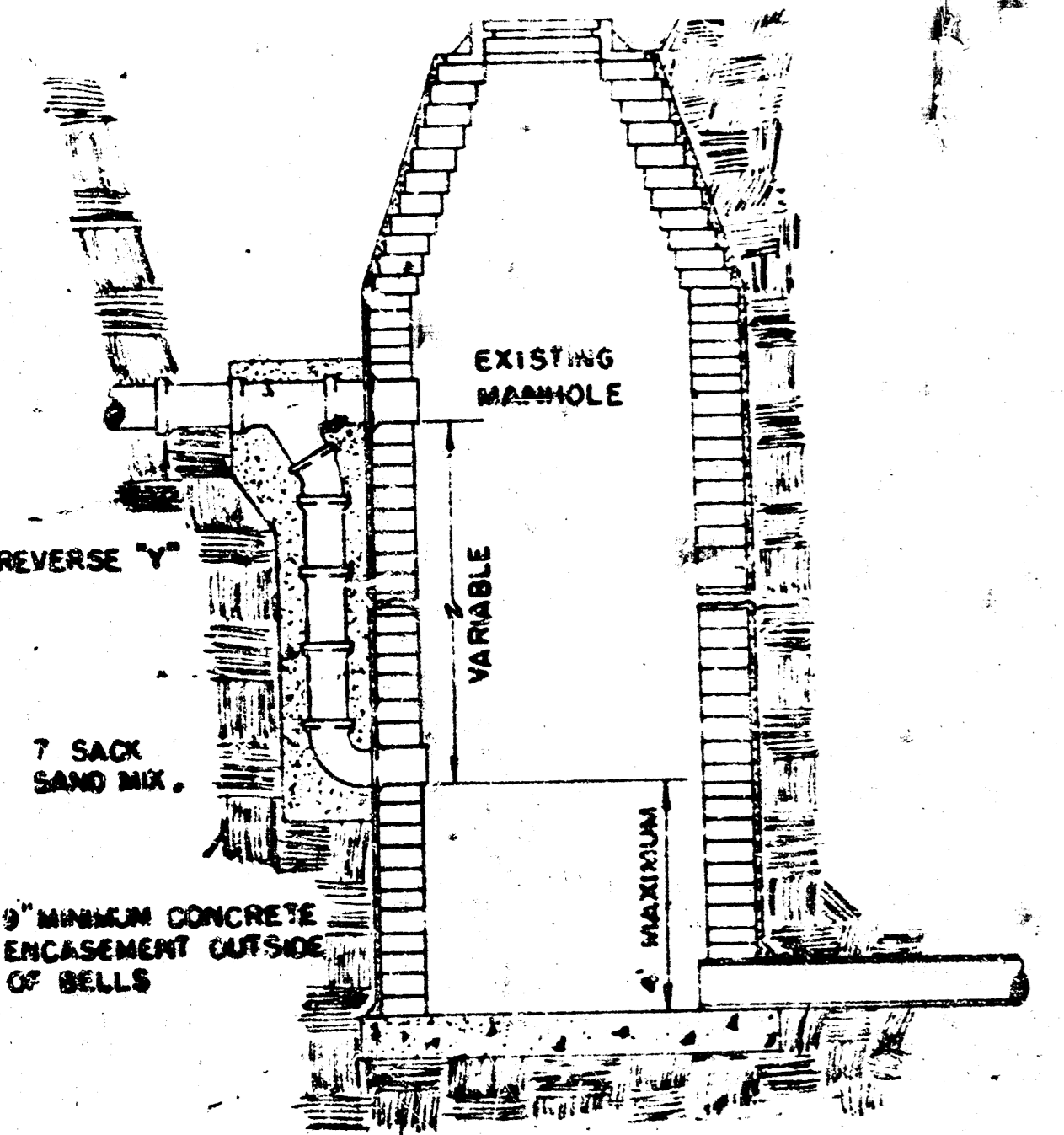
OUTSIDE DROP MANHOLE TYPE "A"



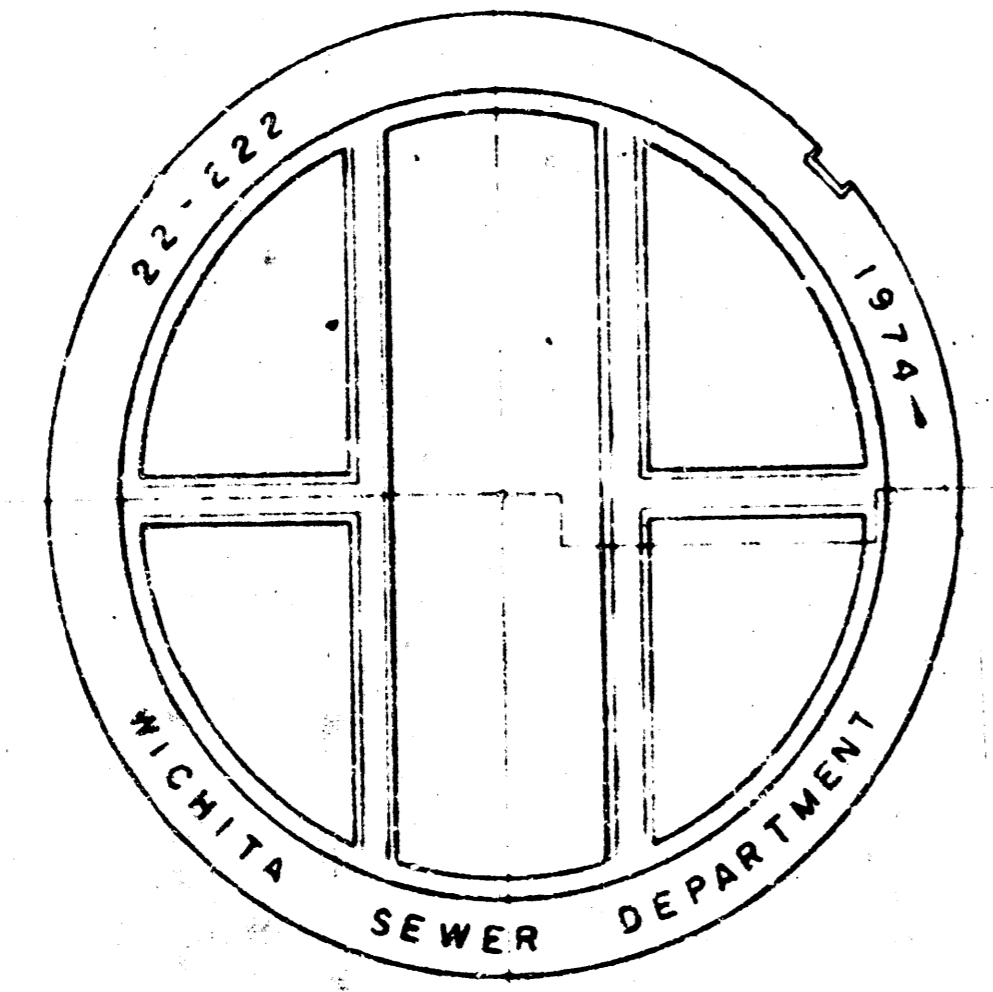
OUTSIDE DROP MANHOLE TYPE "B"

* DRAW = 6' ON 5' DIA. M.H.

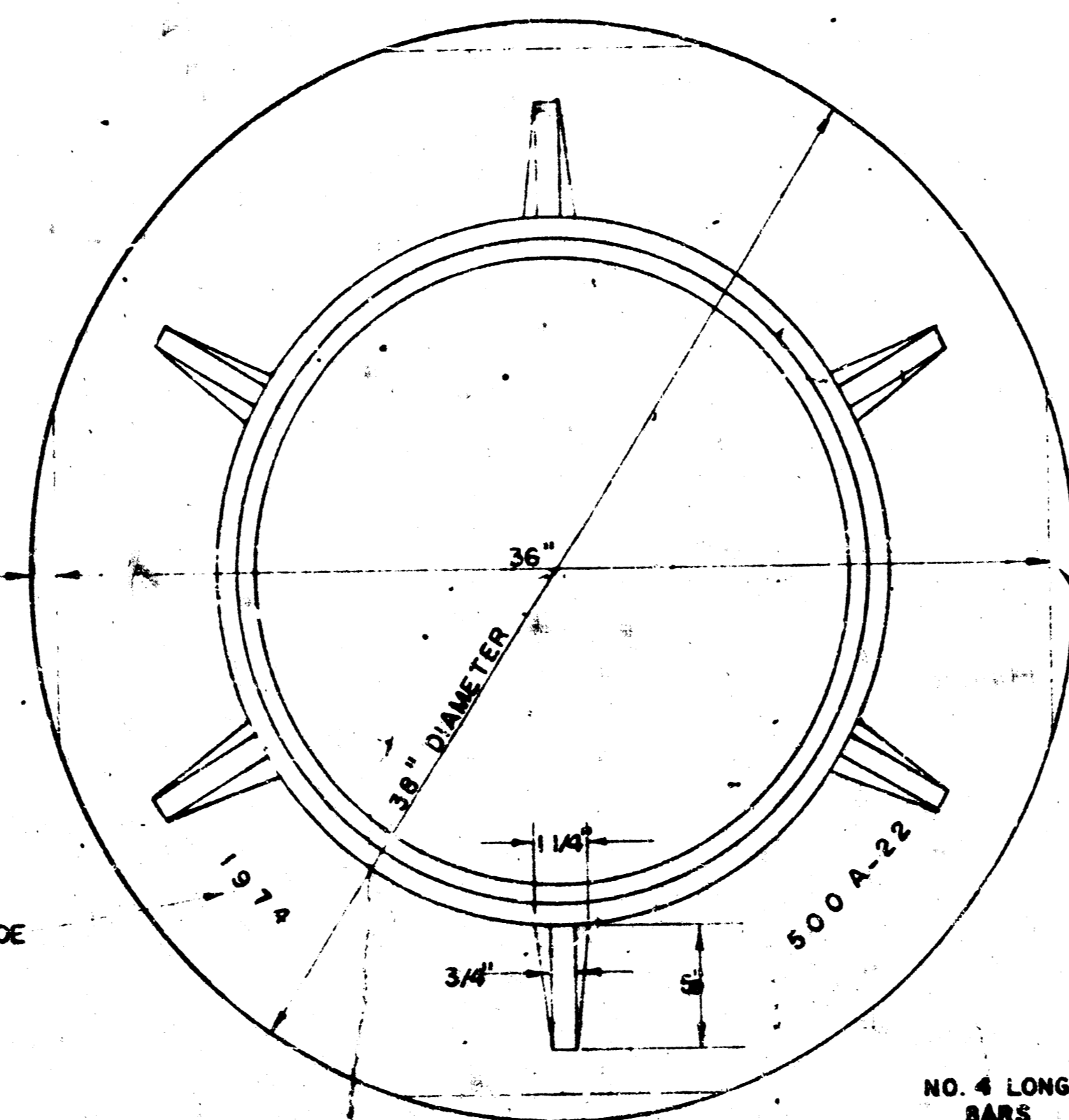
NOTE: REINFORCING STEEL SHALL BE INSTALLED IN THE MANHOLE BASES 6" ABOVE THE BOTTOM. REINFORCING STEEL SHALL CONSIST OF NO. 4 BARS PLACED ON 6" CENTERS IN BOTH DIRECTIONS. THE COST OF REINFORCING STEEL IS TO BE INCLUDED IN THE PRICE BID FOR THE MANHOLE.



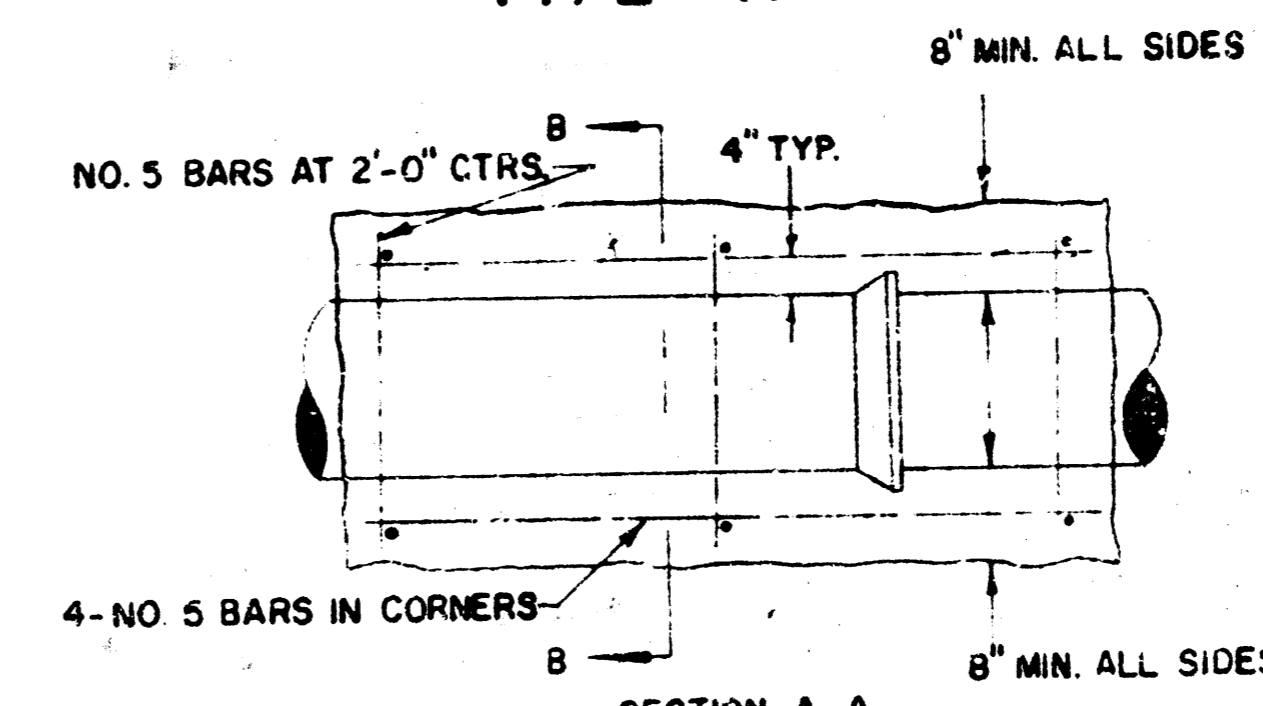
DETAIL OF DROP STACK FOR EXISTING MANHOLES IN GROUND WATER



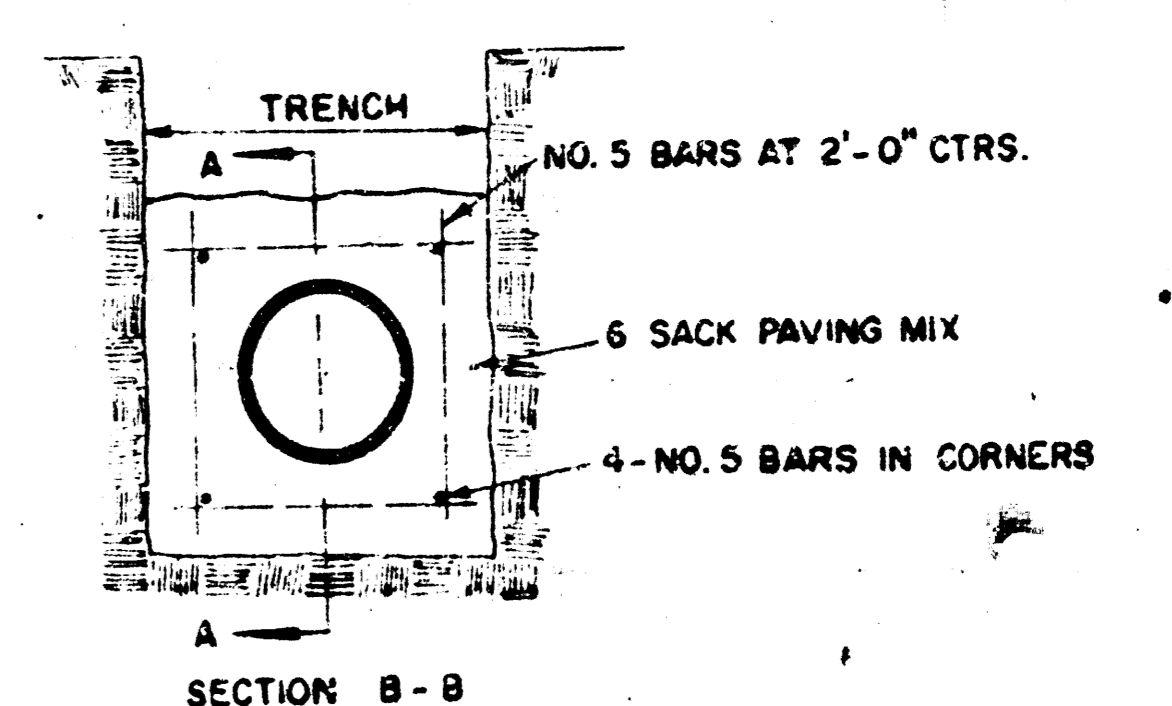
MANHOLE COVER WEIGHT 110 LBS.



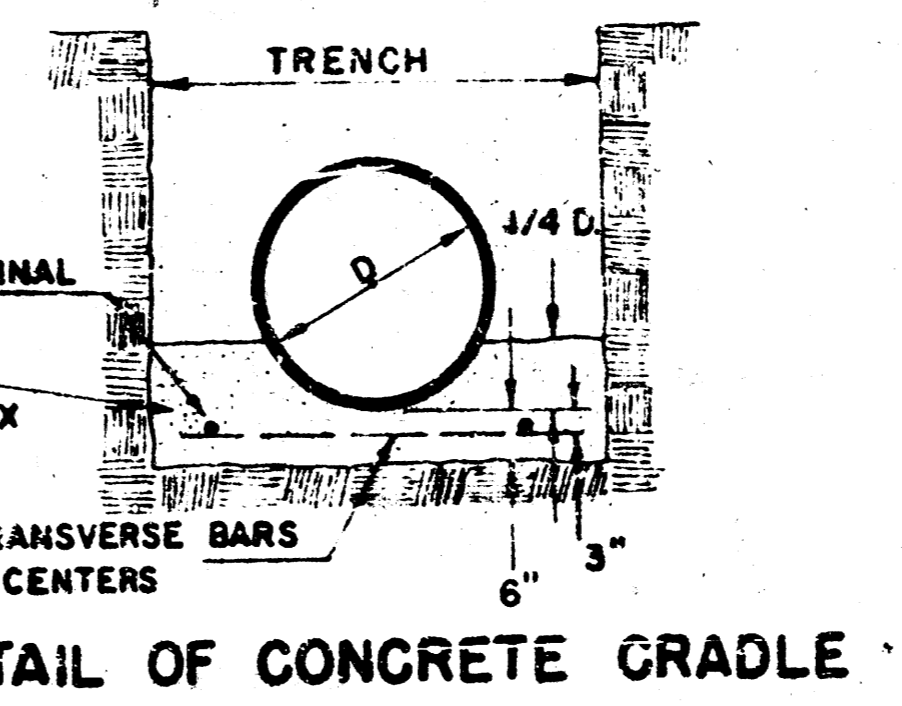
MANHOLE RING WEIGHT 325 LBS. RING NO. 500A WEIGHT 800 LBS. RING NO. 500AS



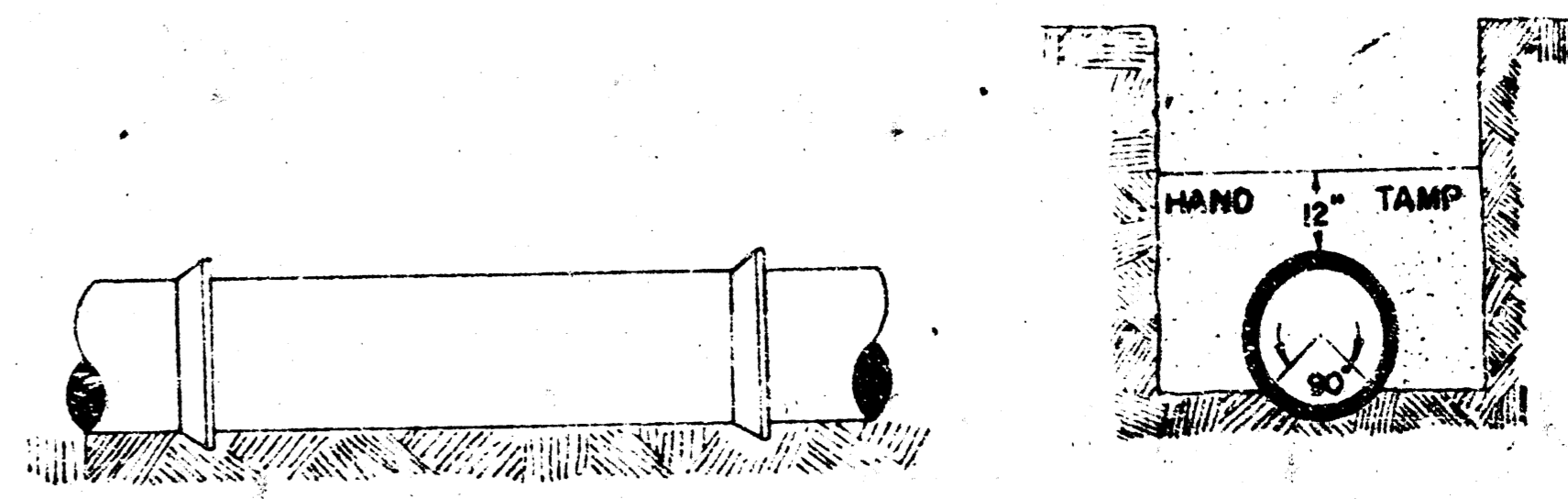
REINFORCED CONCRETE ENCASEMENT



NOTE: CONCRETE ENCASEMENT AND CONCRETE CRADLE SHALL BEGIN AND END AT A JOINT WHEN CLAY PIPE IS USED.



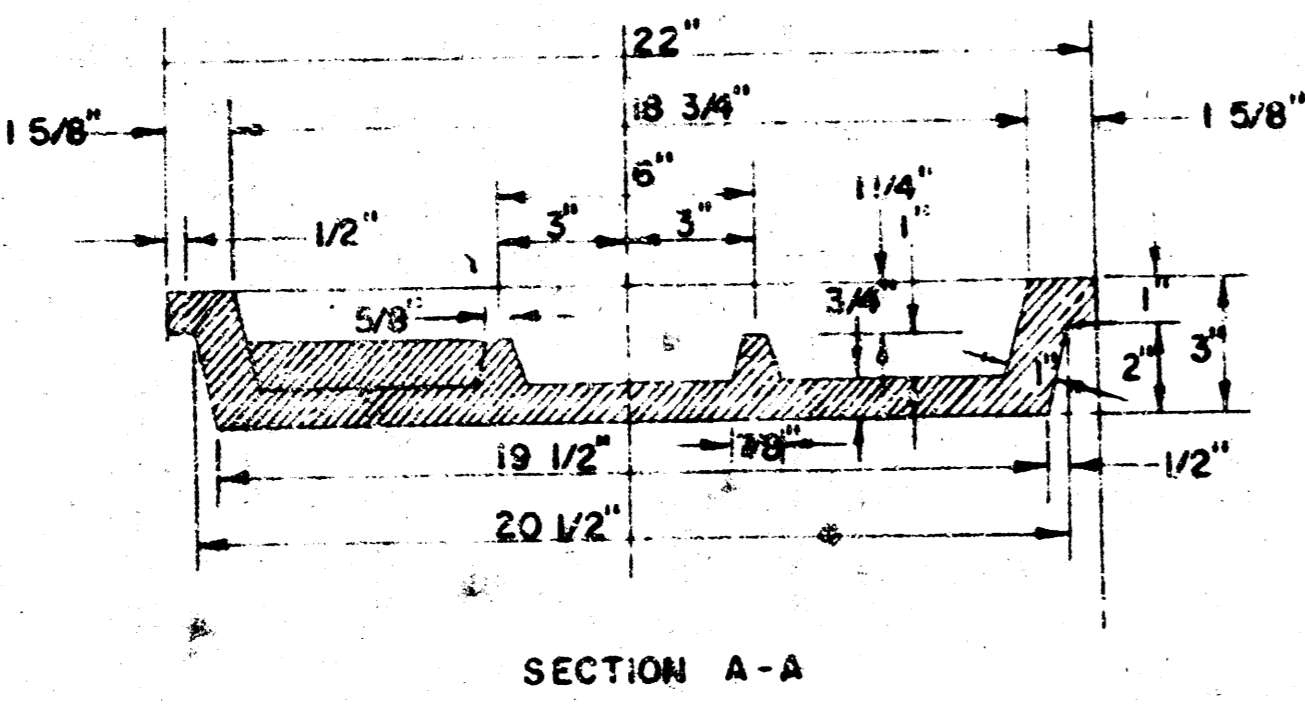
DETAIL OF CONCRETE CRADLE



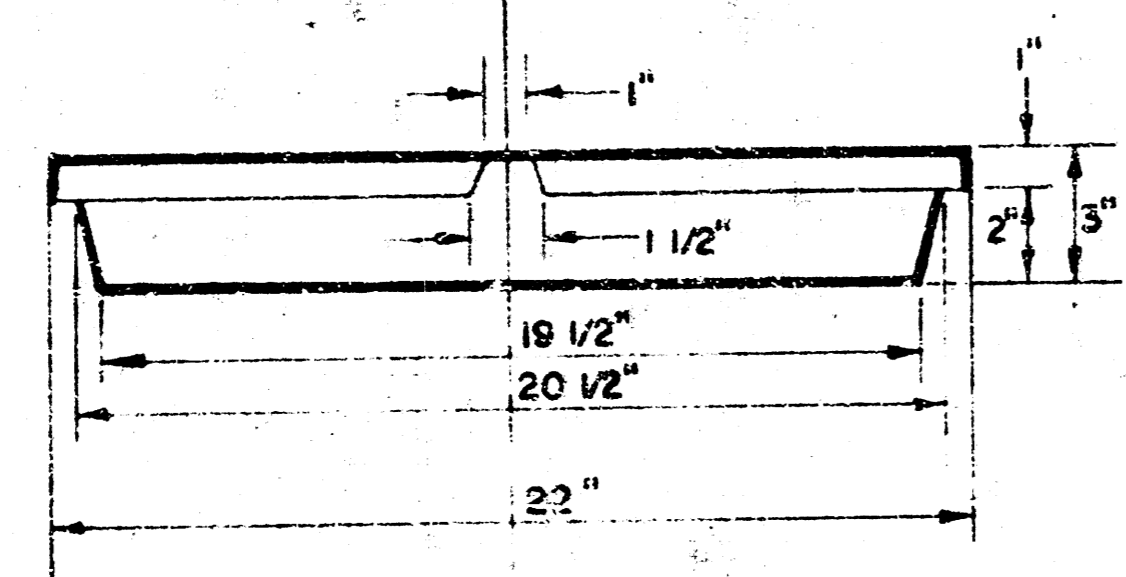
ORDINARY BEDDING METHOD STORM SEWER PIPE

GENERAL NOTES

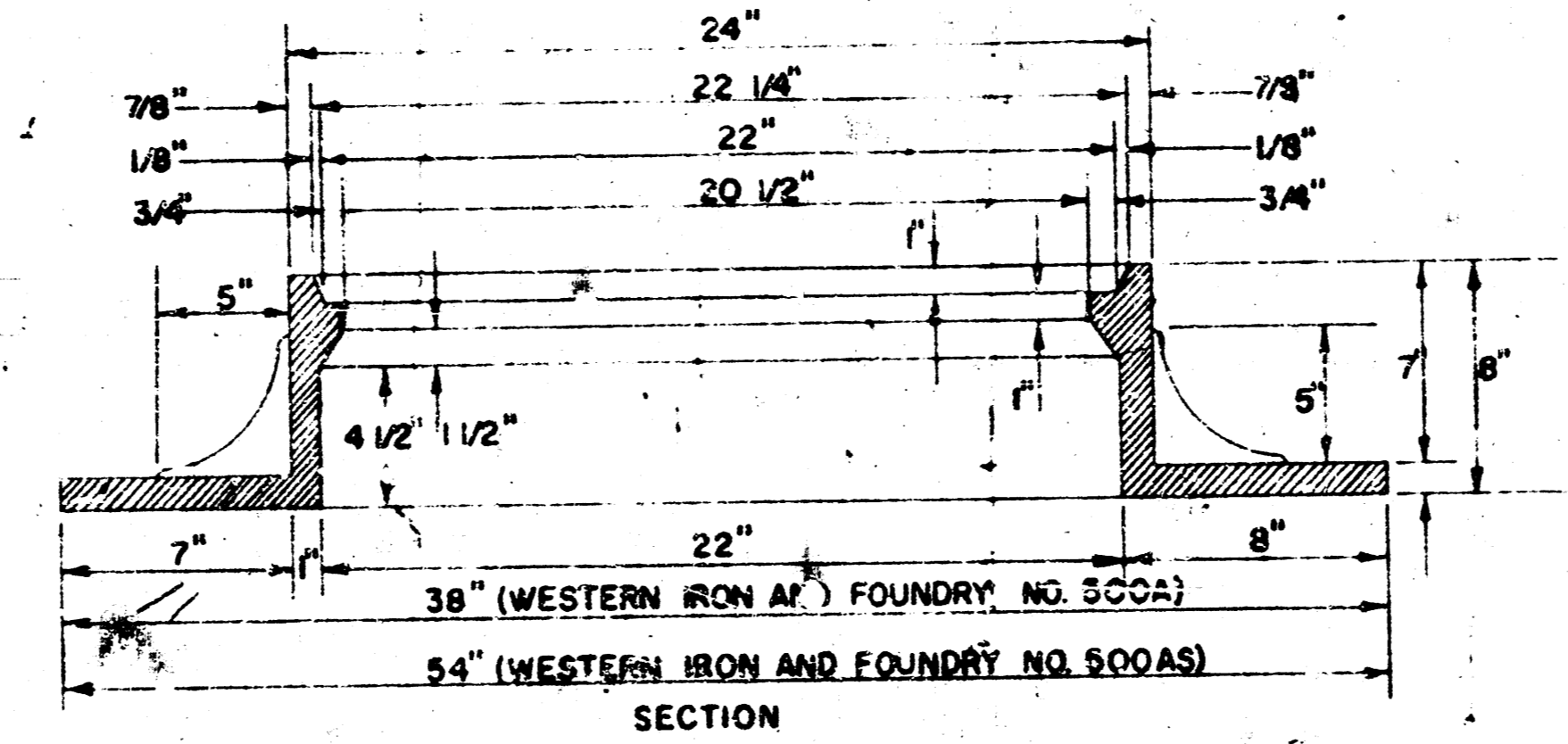
- MORTAR USED IN MASONRY CONSTRUCTION SHALL CONTAIN 8 SACKS OF CEMENT PER CUBIC YARD.
- STANDARD MANHOLES TYPE "A" OR TYPE "B" AND STANDARD DROP MANHOLES TYPE "A" OR TYPE "B" SHALL BE BID AS STANDARD MANHOLES FOR THE TYPE AND DIAMETER INDICATED. OUTSIDE DROP MANHOLES SHALL BE BID AS STANDARD OUTSIDE DROP MANHOLES FOR THE TYPE AND DIAMETER INDICATED. ALL MANHOLE DIAMETERS WILL BE 4' UNLESS INDICATED OTHERWISE. MANHOLES WITH PIPE SIZES LARGER THAN 24" SHALL BE 5' DIAMETER.
- THE FLOORS OF ALL MANHOLES SHALL BE SHAPED TO INCREASE HYDRAULIC EFFICIENCY USING 8 SACK SAND MIX CONCRETE.
- PIPES INSTALLED WITHIN THE MANHOLE EXCAVATION SHALL BE CRADLED WITH CONCRETE TO THE LIMITS OF THE MANHOLE EXCAVATION. COST OF CRADLE WITHIN MANHOLE EXCAVATION SHALL BE INCLUDED IN THE PRICE BID FOR THE MANHOLE. CRADLE SHALL EXTEND TO FIRST JOINT OUTSIDE OF MANHOLE WHEN CLAY PIPE IS USED.



MANHOLE COVER



MANHOLE COVER



MANHOLE RING

OUTSIDE CIRCUMFERENCE OF COVER AND 1/4" INNER FACE AND SEAT OF RING TO BE MACHINE FIT.

REVISED 4-13-77
 DETAILS OF
SEWER APPURTENANCES
 ADOPTED AS STANDARD DESIGN
 BY
 ENGINEERING DIVISION
 CITY OF WICHITA, KANSAS
 R. W. LINN CITY ENGINEER
 1974

FILMED FROM THE BEST AVAILABLE COPY