

SANITARY SEWER LATERAL

TO SERVE PART OF LOT 1, BLOCK 1, KILLARNEY PLAZA 1ST ADDITION

PRIVATE PROJECT NO. 982 PPS

OCA# 607861

BENCH MARK

BM #1: City of Wichita Std. Disk at NW Corner Concrete Field Drain. 150'± E. of the E.L. of Rock Road and 6' S. of S.L. 37th Street North. Elev. 203.87

BM #2: "x" Cut in T.C. 10' E. of 2nd Light Pole E. of W.L. Tract 2, N. of Northrock Suites Hotel. Elev. 198.24

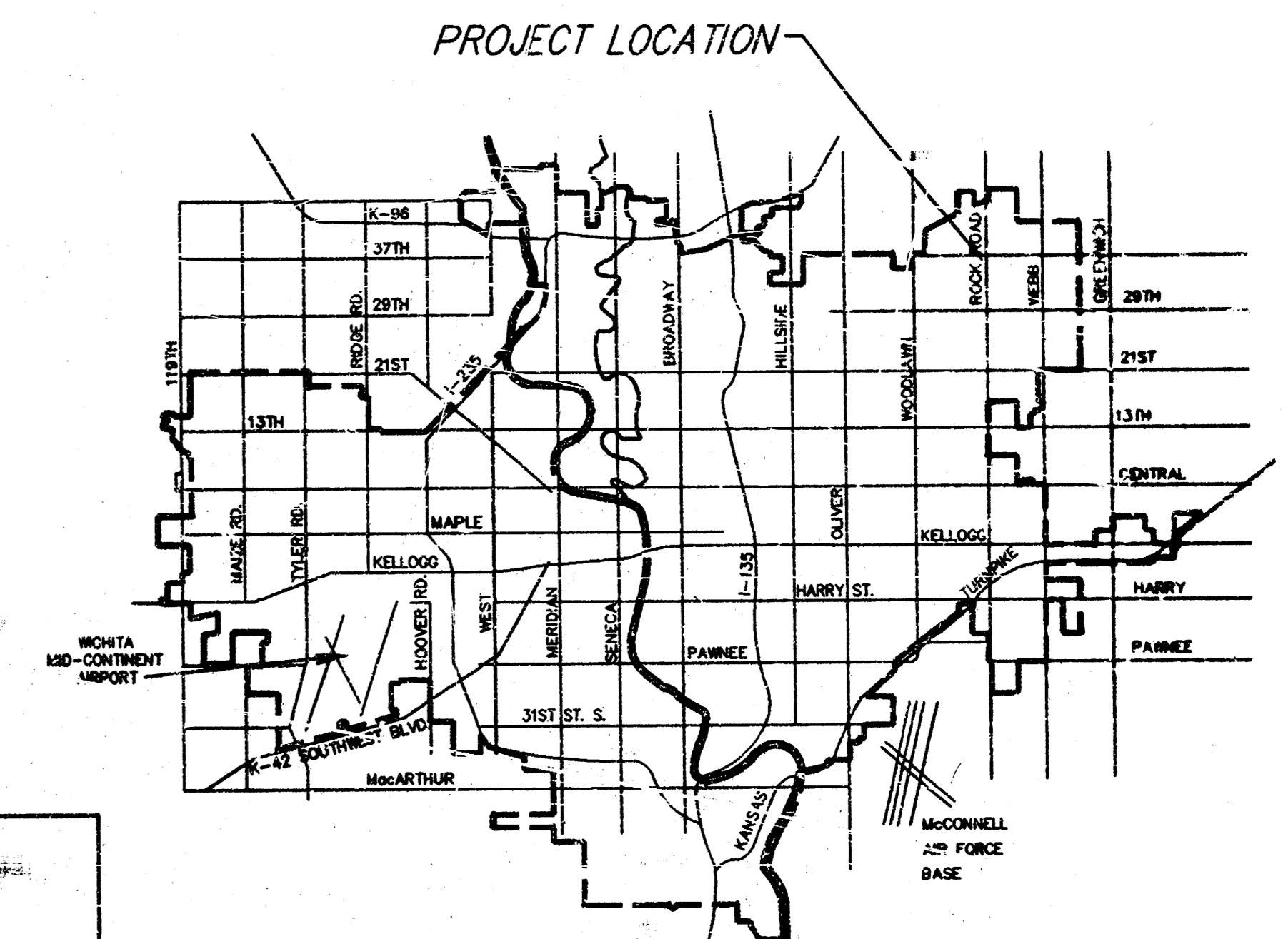
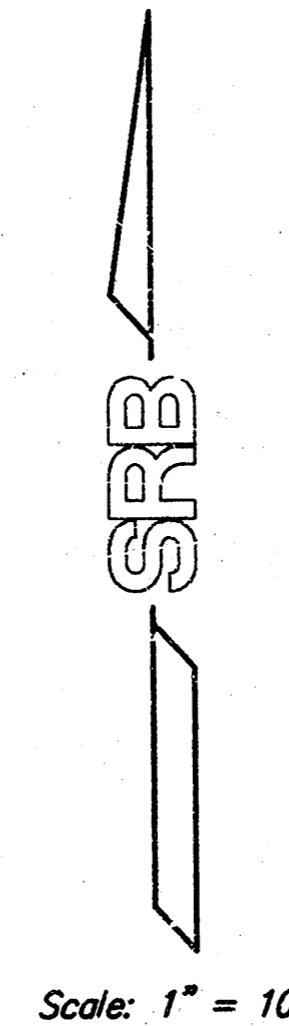
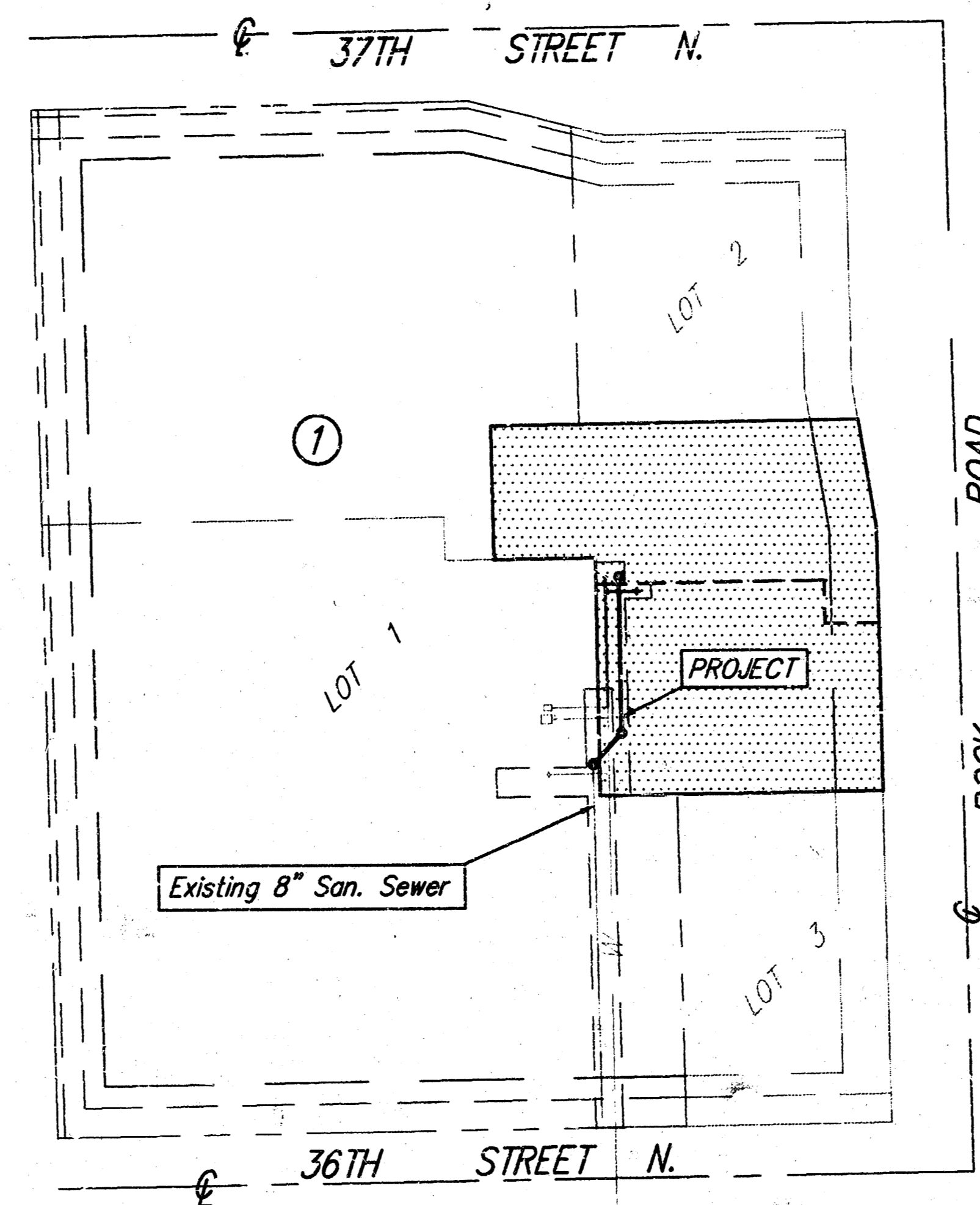
BM #3: "x" Cut at S.E. Corner of Lot 3, Block 1, Killarney Plaza First Addition. Elev. 200.24

INDEX OF SHEETS

1. TITLE SHEET
2. PLAN - PROFILE
3. SHALLOW MANHOLE DETAILS

GENERAL NOTES

1. Contractor will be required to notify Kansas One-Call (687-2470), a minimum of 48 hours in advance of beginning any excavation.
2. The Contractor shall give all property owners and/or tenants of developed property directly abutting the construction of this project a minimum of ten (10) days advance notice prior to start of construction.
3. The Contractor shall be responsible for preserving property irons. The Contractor will be required to re-establish any property irons which are damaged or destroyed by his construction operations. Such irons shall be re-established by a licensed land surveyor in accordance with state laws.
4. This project is to be constructed in accordance with City of Wichita Standard Specifications for the Construction of City Projects, March 1998, and the latest edition of the Policy on Construction of Public Works Projects by Private Contract.
5. Traffic will not be affected by construction of this project.



VICINITY MAP

SERVICE AREA

APPROVED AS NOTED
BY CITY ENGINEER OF WICHITA

Sanitary Sewers VRH 2/29/00

Storm Sewers _____

Driveway Approaches _____

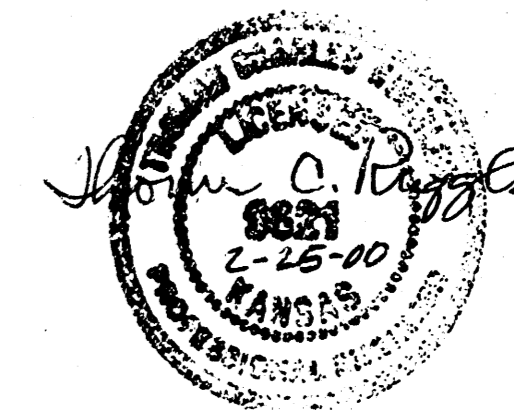
Water Mains _____

Paving _____

NOTE TO CONTRACTORS

Inspection and testing for this project are to be provided by a Licensed Consulting Engineering Firm under contract with the Owner/Developer. Said inspection to be in accordance with the City of Wichita standard construction engineering practices and certified by a Licensed Professional Engineer. No work shall be performed in dedications or public right-of-way by the Contractor without such inspection, nor shall any work be commenced without written authorization by the City Engineer.

Booked
P-144
8-18-00
RDL



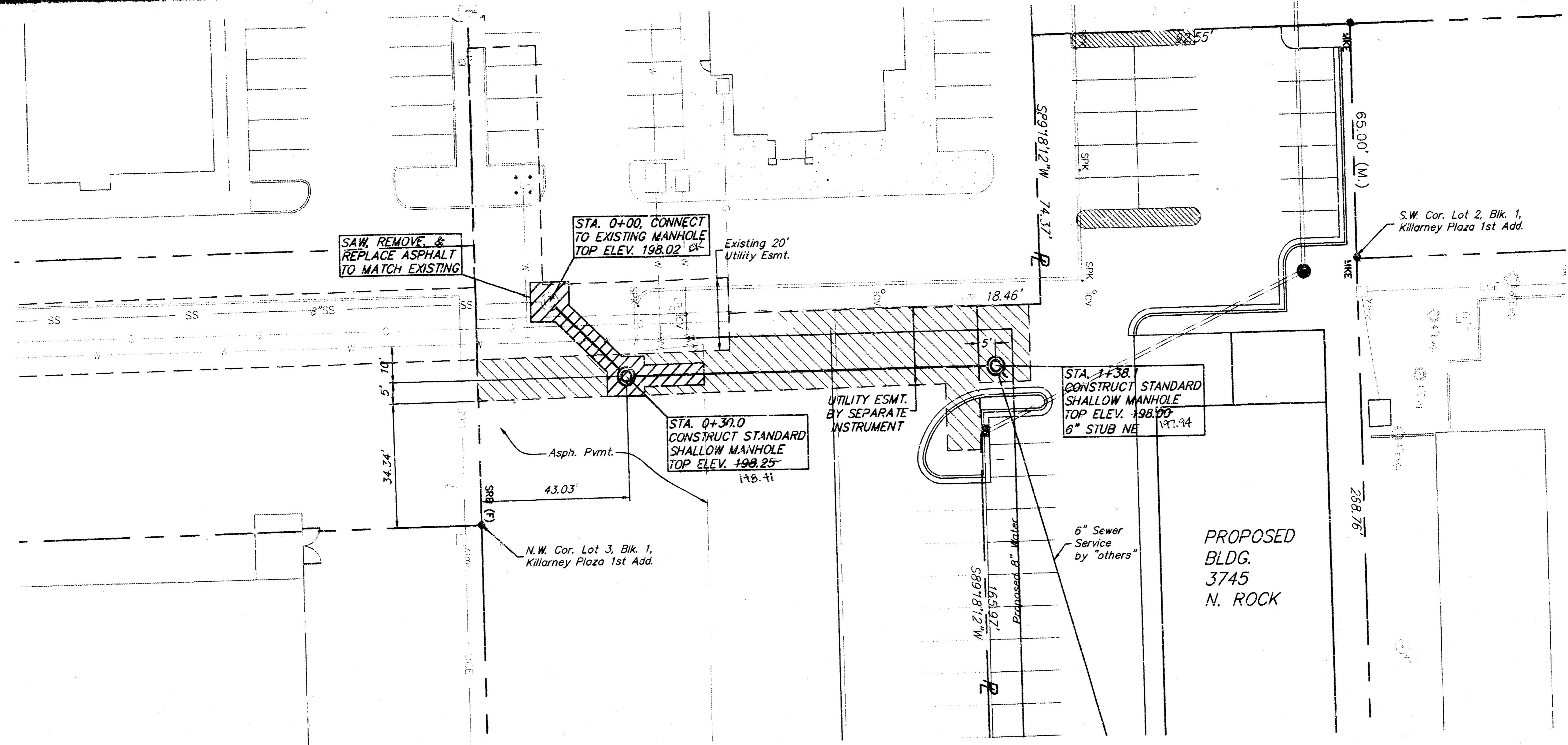
W.D. CAHILL

AS-BUILT DATE: 4-24-00
BY CRAIG MOETHRING
MOETHRING & ASSOCIATES

CITY OF WICHITA, KANSAS
MICHAEL E. LINDEBAK, P.E. - CITY ENGINEER

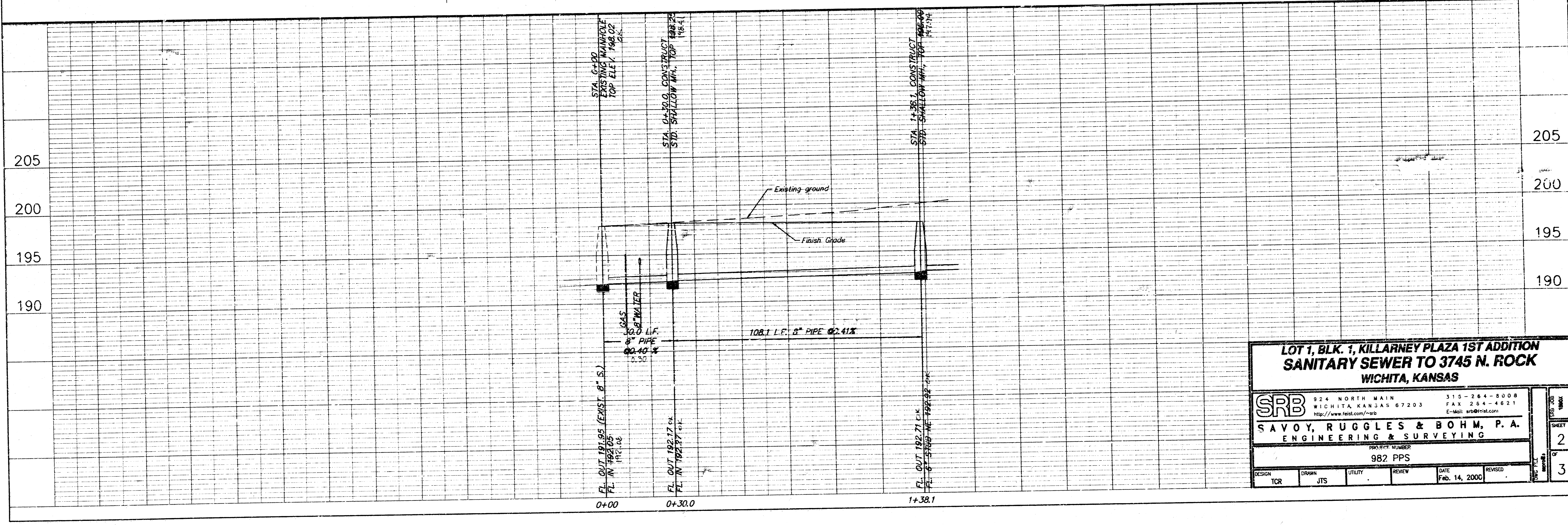
SRB 224 NORTH MAIN 316-264-8008
WICHITA, KANSAS 67203 FAX 316-264-4821
SAVOY, RUGGLES & BOHM, P. A.
ENGINEERING & SURVEYING 1590

16-9-1-12



SRB

SCALE
 1" = 20' Horiz. (Plan)
 1" = 5' Vert. (Profile)



**LOT 1, BLK. 1, KILLARNEY PLAZA 1ST ADDITION
 SANITARY SEWER TO 3745 N. ROCK
 WICHITA, KANSAS**

SRB
 SAVOY, RUGGLES & BOHM, P. A.
 ENGINEERING & SURVEYING

324 NORTH MAIN WICHITA, KANSAS 67203
 315-264-8008 FAX 264-4821
 E-Mail: srb@srbin.com
<http://www.fesit.com/~srb>

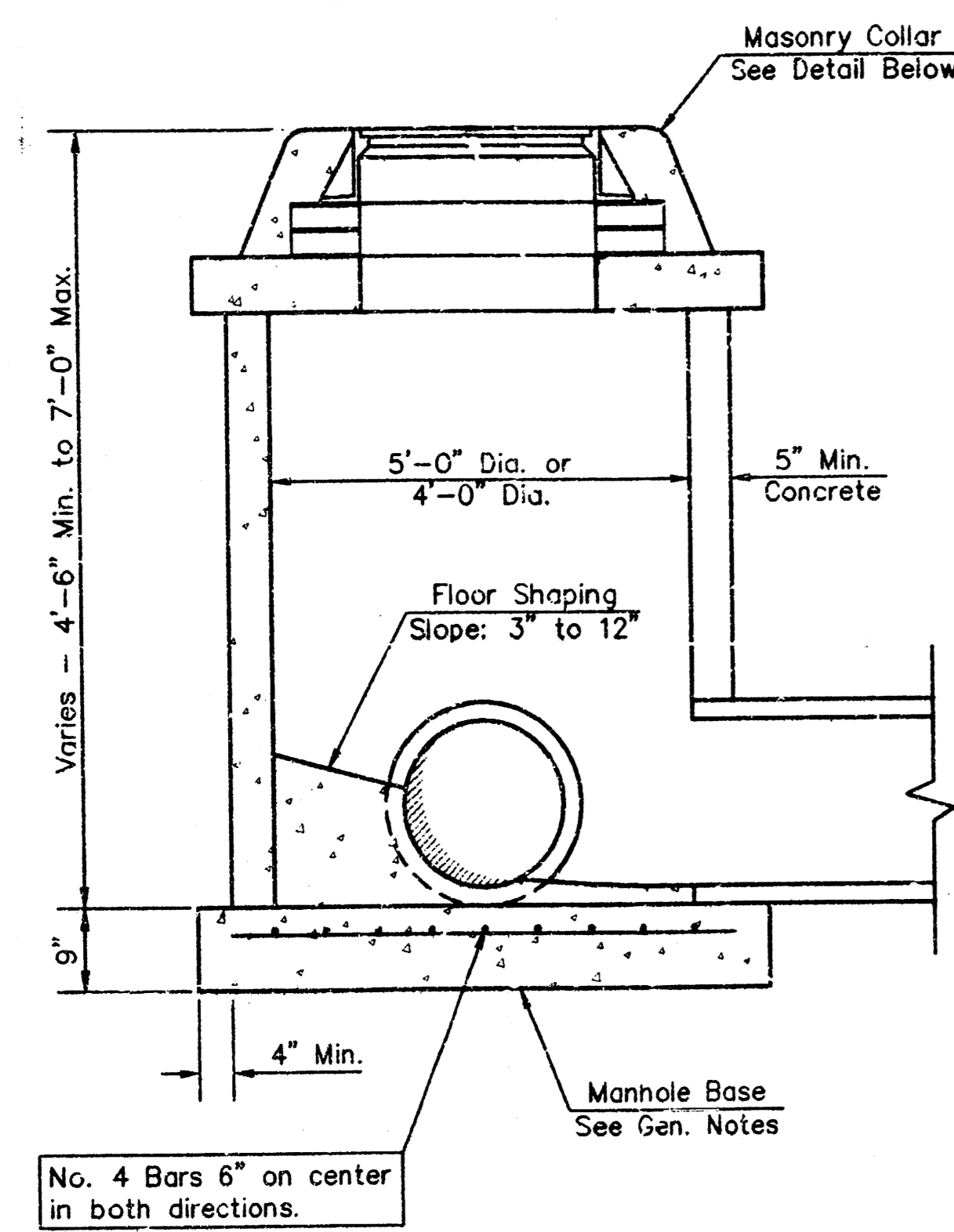
PROJECT NUMBER
982 PPS

DESIGN	TCR	DATE	FEB. 14, 2000
DRAWN	JTS	REVIEW	

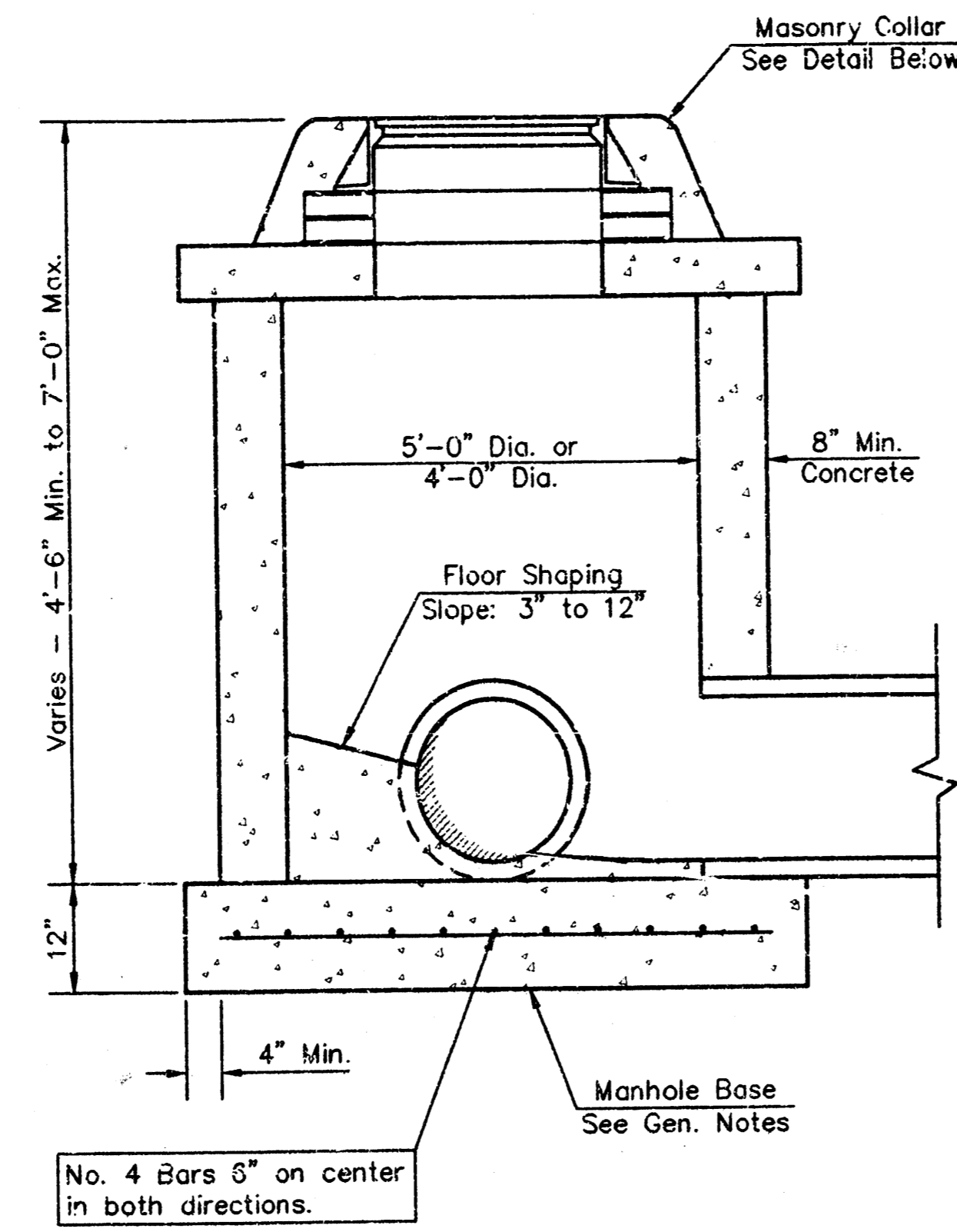
DATE: FEB. 14, 2000

REVISIONS:

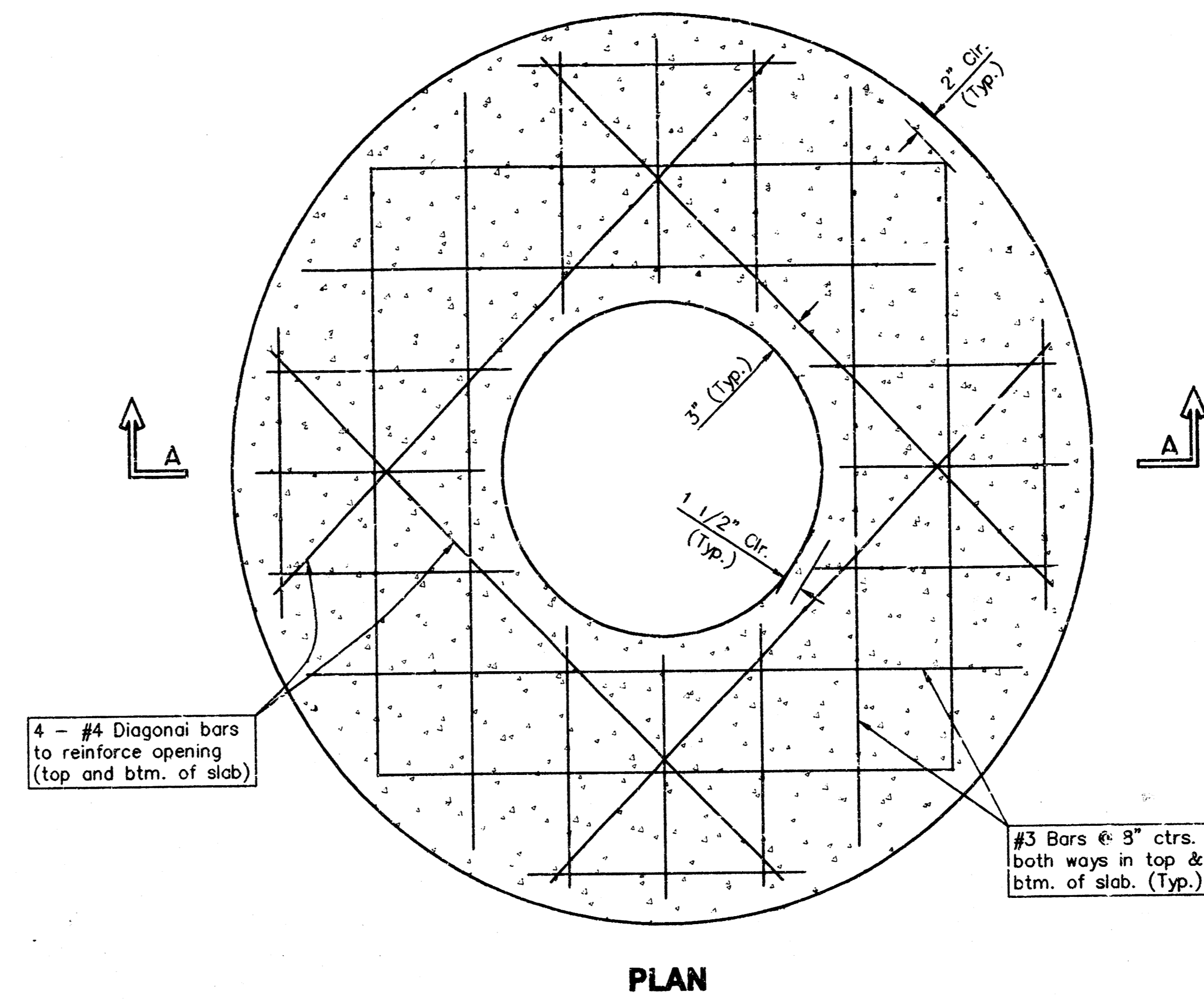
NO.	DATE	DESCRIPTION
1		
2		
3		



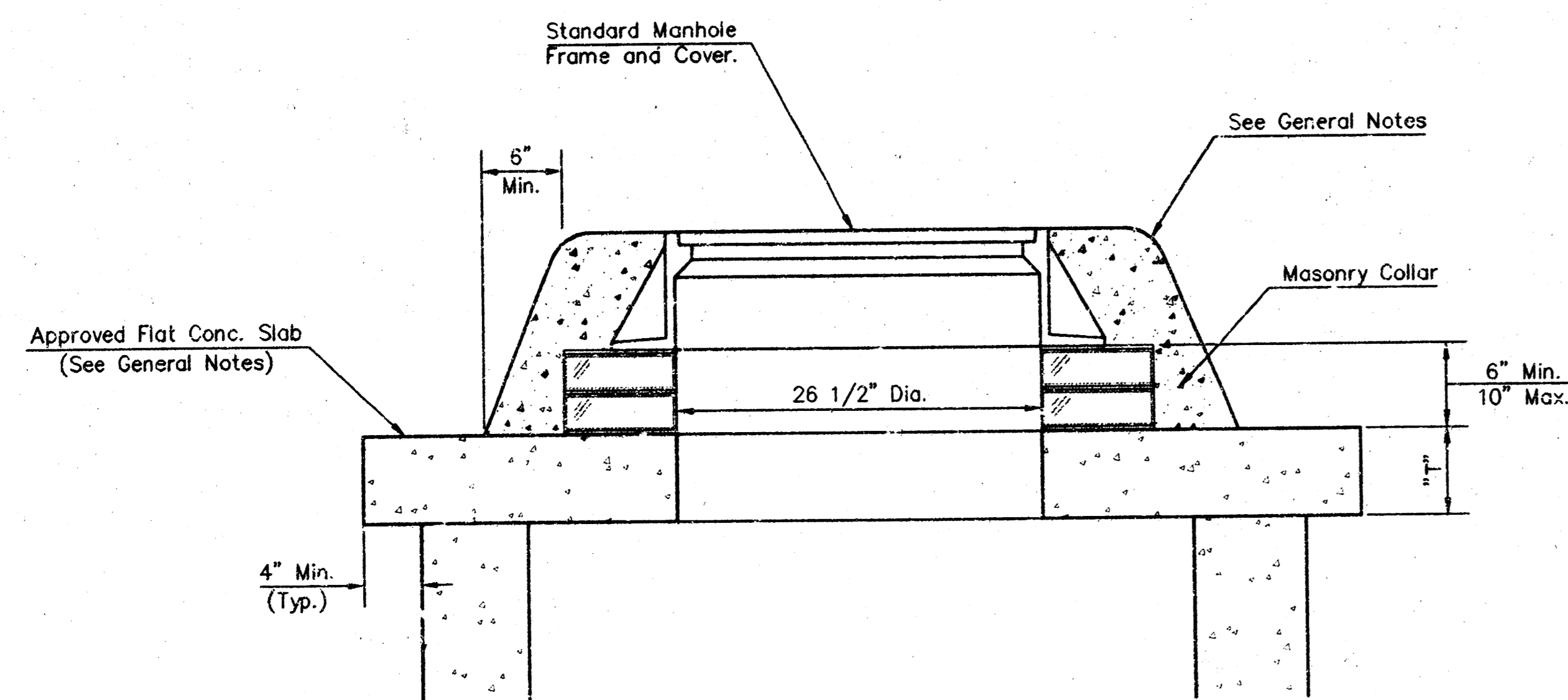
SHALLOW TYPE "P" MANHOLE



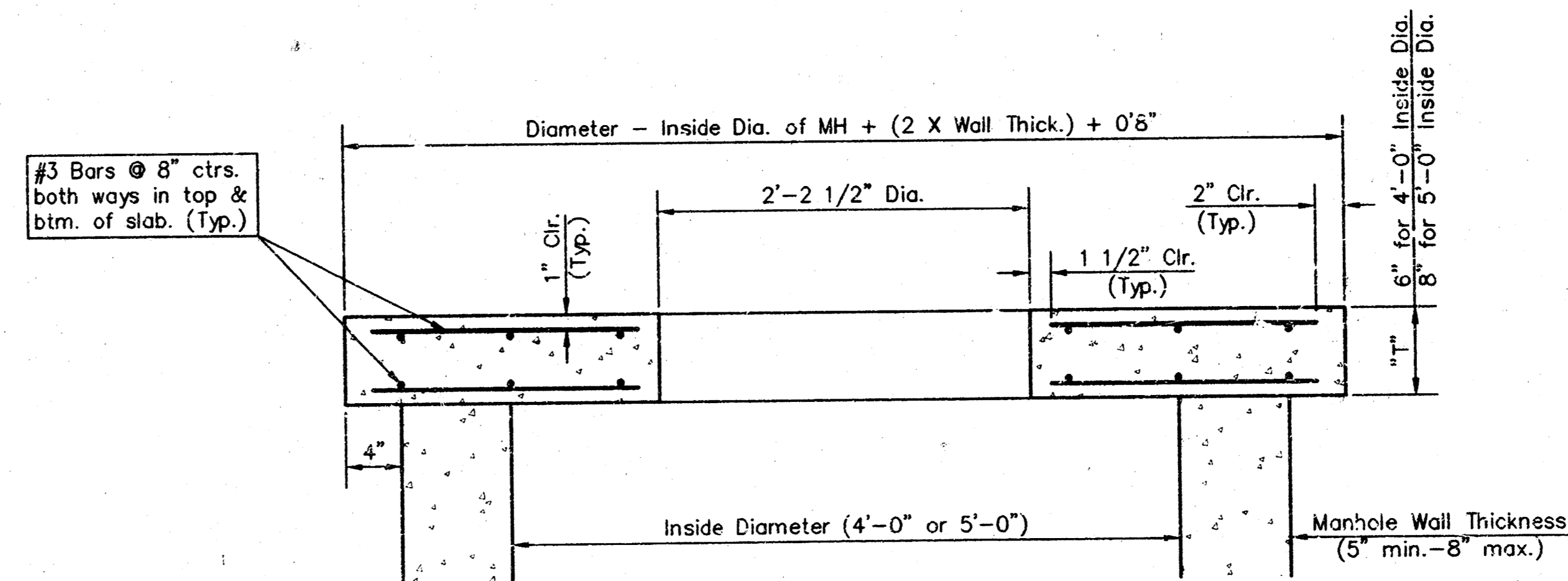
SHALLOW TYPE "C" MANHOLE



PLAN



MASONRY COLLAR DETAIL



SECTION A-A

FLAT CONCRETE SLAB DETAILS

GENERAL NOTES

- Mortar used in masonry construction shall contain 8 sacks of cement per cubic yard. Concrete used in manhole bases shall conform to the requirements of concrete for concrete pavement construction as specified in the city standard paving specifications using city concrete cement mix without air entraining admixture. Mortar shall be placed around the manhole ring as shown on the drawings when manholes are constructed in unpaved areas. Manholes constructed where pipe sizes are smaller than 24" shall have an inside diameter of 4". Manholes constructed where pipe sizes are 24" or larger shall have an inside diameter of 5". Completed manhole shall be without leaks and water tight.
- Reinforcing steel shall be installed in the manhole bases and shall consist of no. 4 bars placed on 6" centers in both directions. The manhole base reinforcement shall be placed 6" above the bottom of the manhole base. All costs for furnishing and installing reinforcing steel shall be included in the unit price bid for the manhole.
- The floors of all manholes shall be shaped with flow channels such that the manholes will be self cleaning and free of areas where solids could be deposited as sewage flows through the manhole from all inlet pipes to the outlet pipe. Flow channels shall be formed to match the bottom halves of the inflowing pipes and the outflowing pipe as shown by the drawings. Manhole floors shall have slopes of 3 inches per foot in the areas outside of the flow channels sloped toward the flow channels. Pipes laid through manholes shall have the top half removed to neat lines for the full inside diameter of the manhole. Manhole floors shall then be shaped around the bottom half of the pipe which forms the flow channel.
- Pipes installed within the excavation made for the manhole shall be cradled with concrete to the limits of the manhole excavation. When clay pipe is used, the cradle shall extend to the first joint outside the manhole. The cradle shall be terminated at the clay pipe joint in a manner which will maintain the flexibility of the joint. Cost of cradle within manhole excavation or to clay pipe joints adjacent to manhole shall be included in the unit price bid for the manhole.
- Manhole cover castings and manhole frame castings shall conform to the requirements as indicated in the standard specifications and as shown in the standard detail drawings.
- The crowns of inflowing pipes shall never be set lower than the crown of the outflowing pipe.
- Standard shallow manholes type "P" and "C" shall be paid for at the unit price bid per each for the type and diameter indicated. All standard shallow manhole diameters will be 4' unless indicated otherwise.
- All brick used in manhole construction shall meet Grade SW of ASTM C652 or C62-87.

<p>THE CITY OF WICHITA</p> <p>CITY ENGINEER'S OFFICE CITY HALL - SEVENTH FLOOR 405 W. 17TH MAIN STREET WICHITA, KANSAS 67202 (316) 268-4671 (316) 268-4114 FAX</p>	SHALLOW MANHOLES TYPE 'P' AND 'C'	
	M. E. LINDEBAK P.E. - CITY ENGINEER	
	PROJECT NUMBER 982-PPS	OGA # 607861
	DATE MAR 96	SHEET 3 OF 3