

Thimble -  
N.W. Cor. Sec. 4, T.28S., R.1E.  
of the 6th P.M.

BENCH MARK - "F" On Top Of Curb,  
6' N. Of N. E. Marion Road & 38' E. Of  
Broadway - Elev. 100.03, City Datum

CITY BENCH MARK - "D" In Conc. At South End of Medial, 413' South of Monument  
At C of Broadway & Pawnee Streets.  
Elev. 98.70, City Datum.

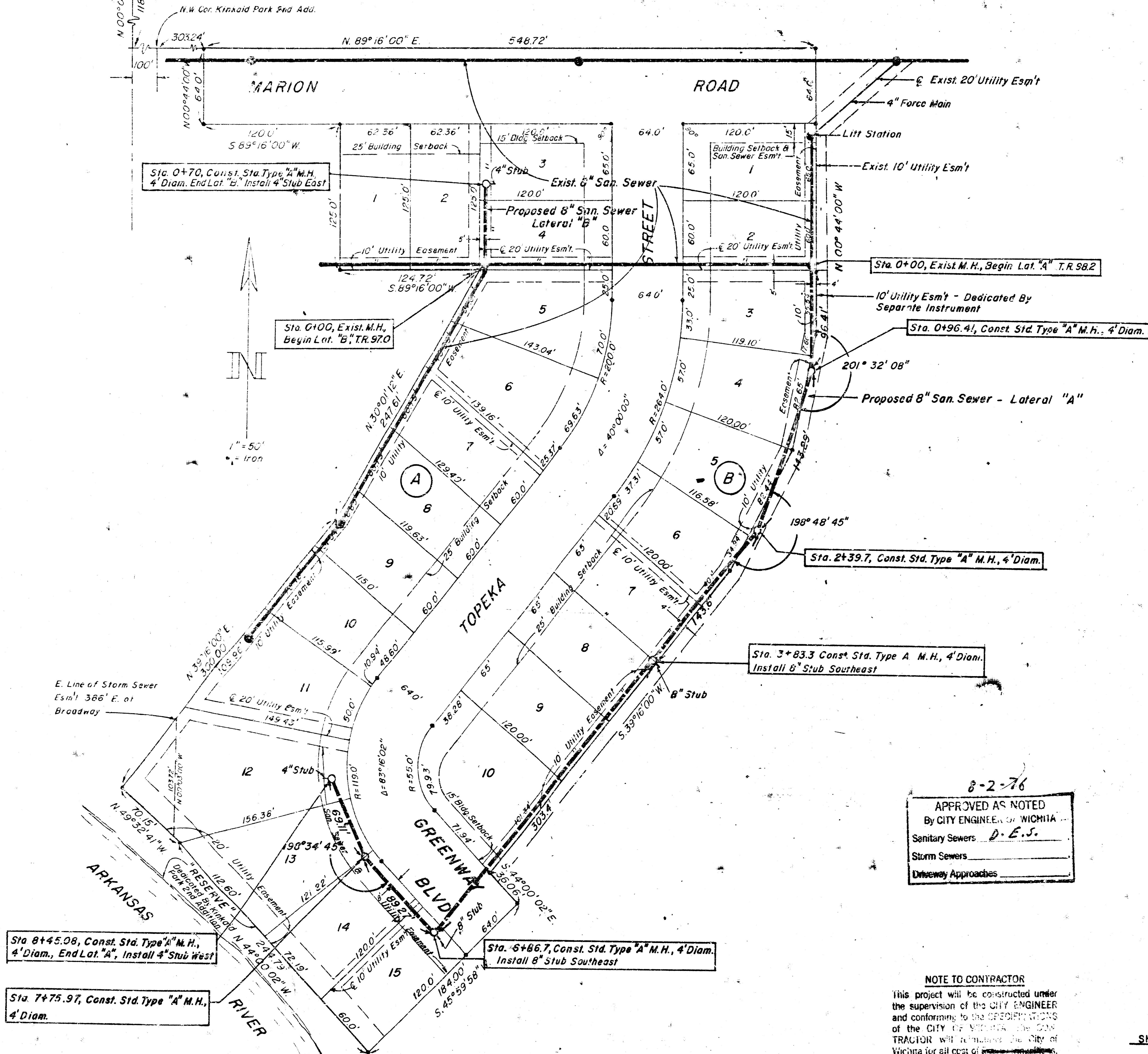
# SANITARY SEWER EXTENSIONS

SERVING  
KINKAID PARK FOURTH ADDITION  
WICHITA, KANSAS

MOHRING & ASSOCIATES  
CONSULTING ENGINEERS

WICHITA  
1976

PRIVATE PROJECT NO. DBKW 706045

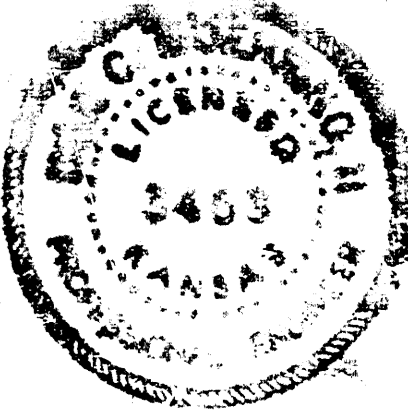


8-2-76  
APPROVED AS NOTED  
By CITY ENGINEER OF WICHITA  
Sanitary Sewers *D.E.S.*  
Storm Sewers  
Driveway Approaches

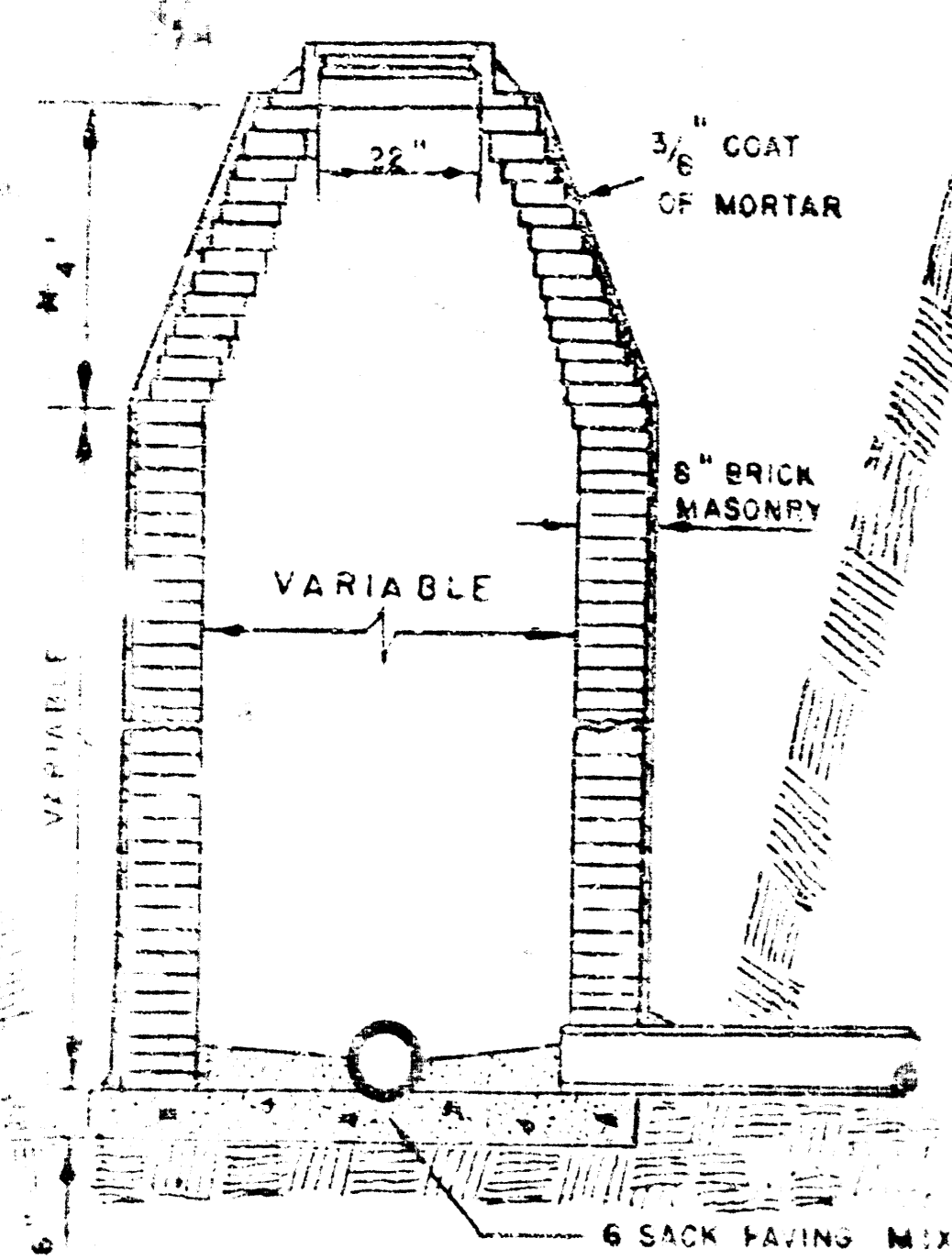
NOTE TO CONTRACTOR  
This project will be constructed under  
the supervision of the CITY ENGINEER  
and conforming to the SPECIFICATIONS  
of the CITY OF WICHITA. THE CON-  
TRACTOR will reimburse the City of  
Wichita for all cost of ~~inspections~~  
and inspection.

SHEET NO.	INDEX	DESCRIPTION
1		TITLE SHEET & PLAN
2		PROFILE
3		SEWER APPURTENANCES

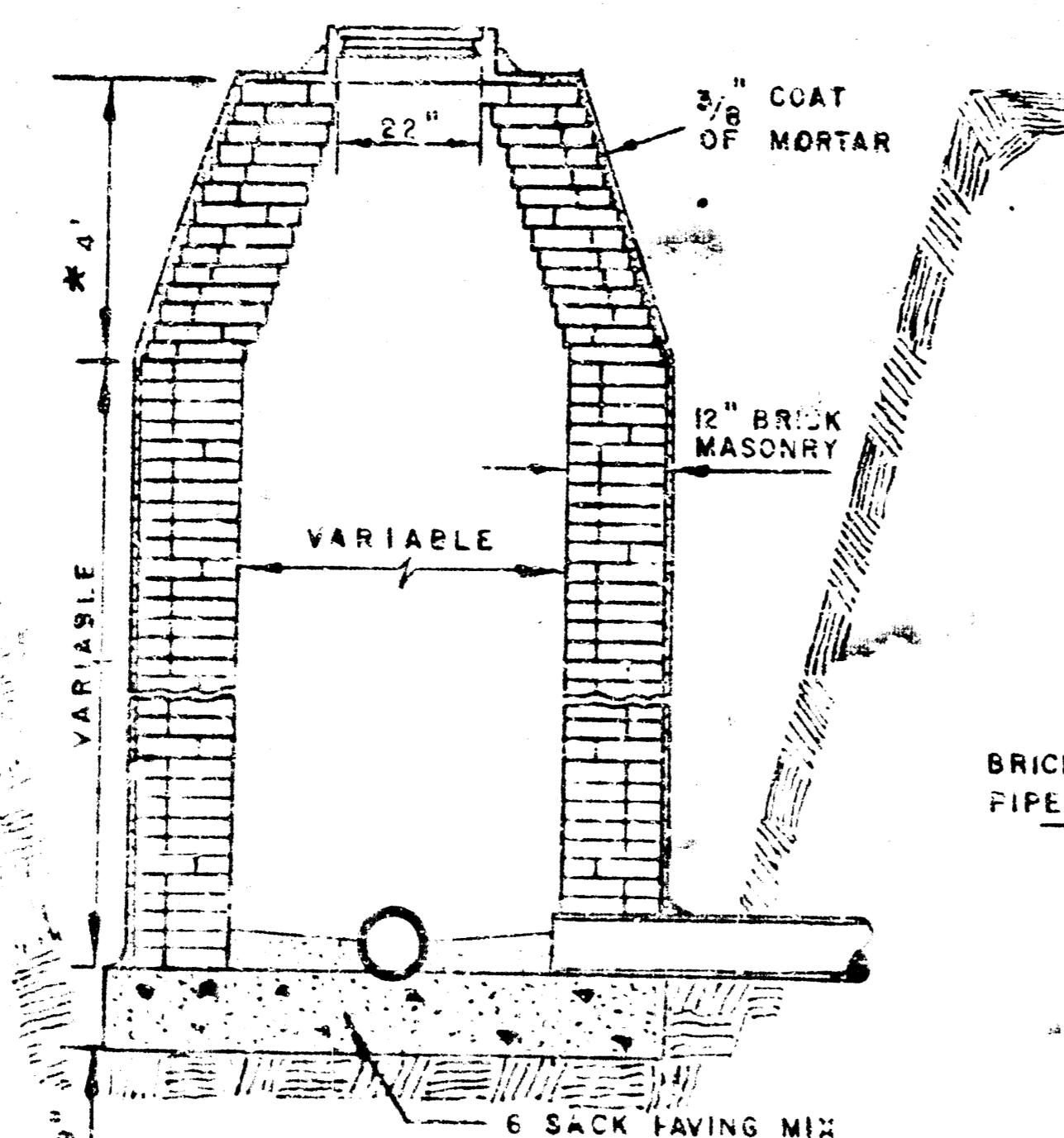
CITY OF WICHITA  
ENGINEERING DEPARTMENT  
APPROVED BY *[Signature]*  
DATE 8-2-76



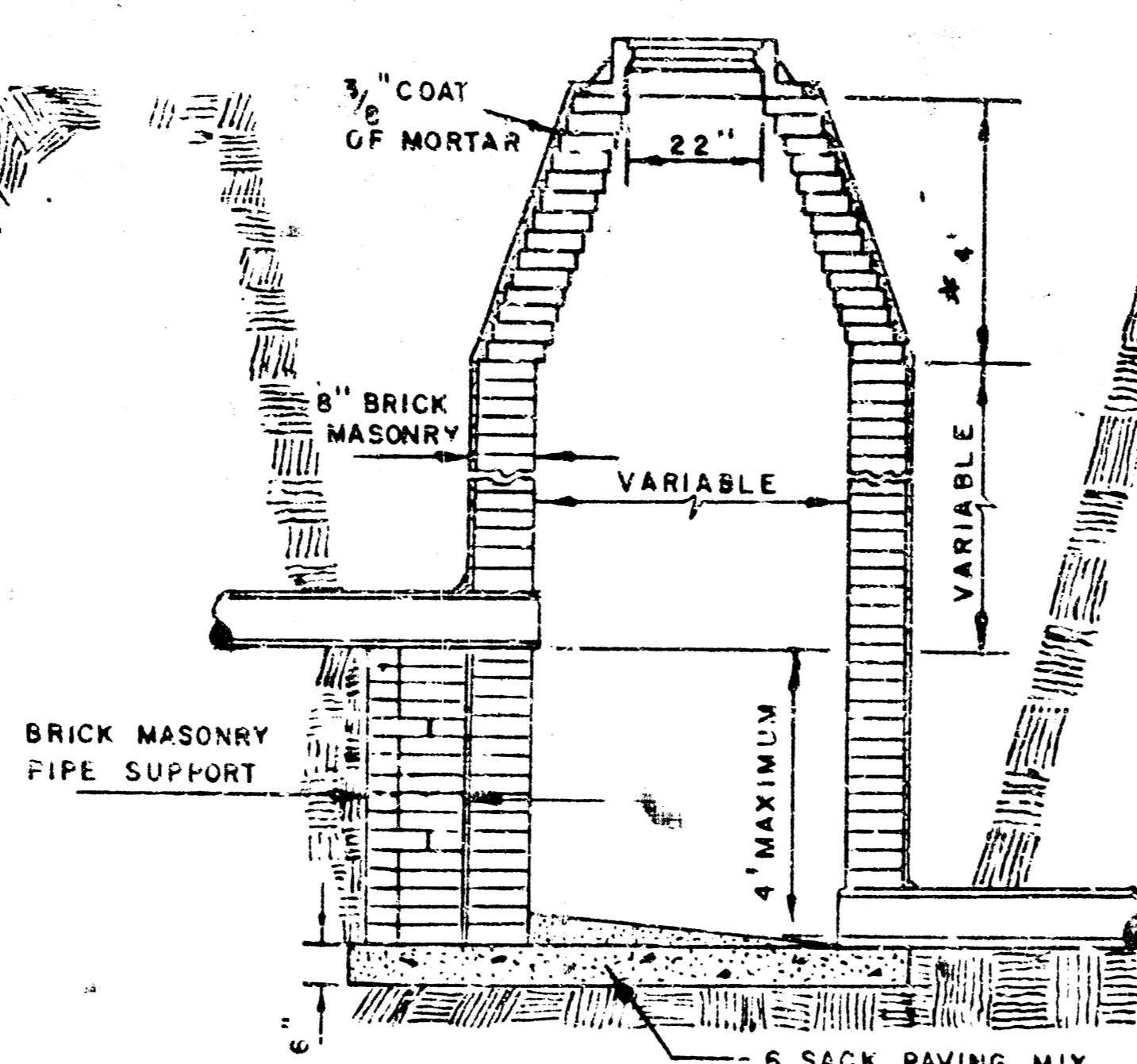




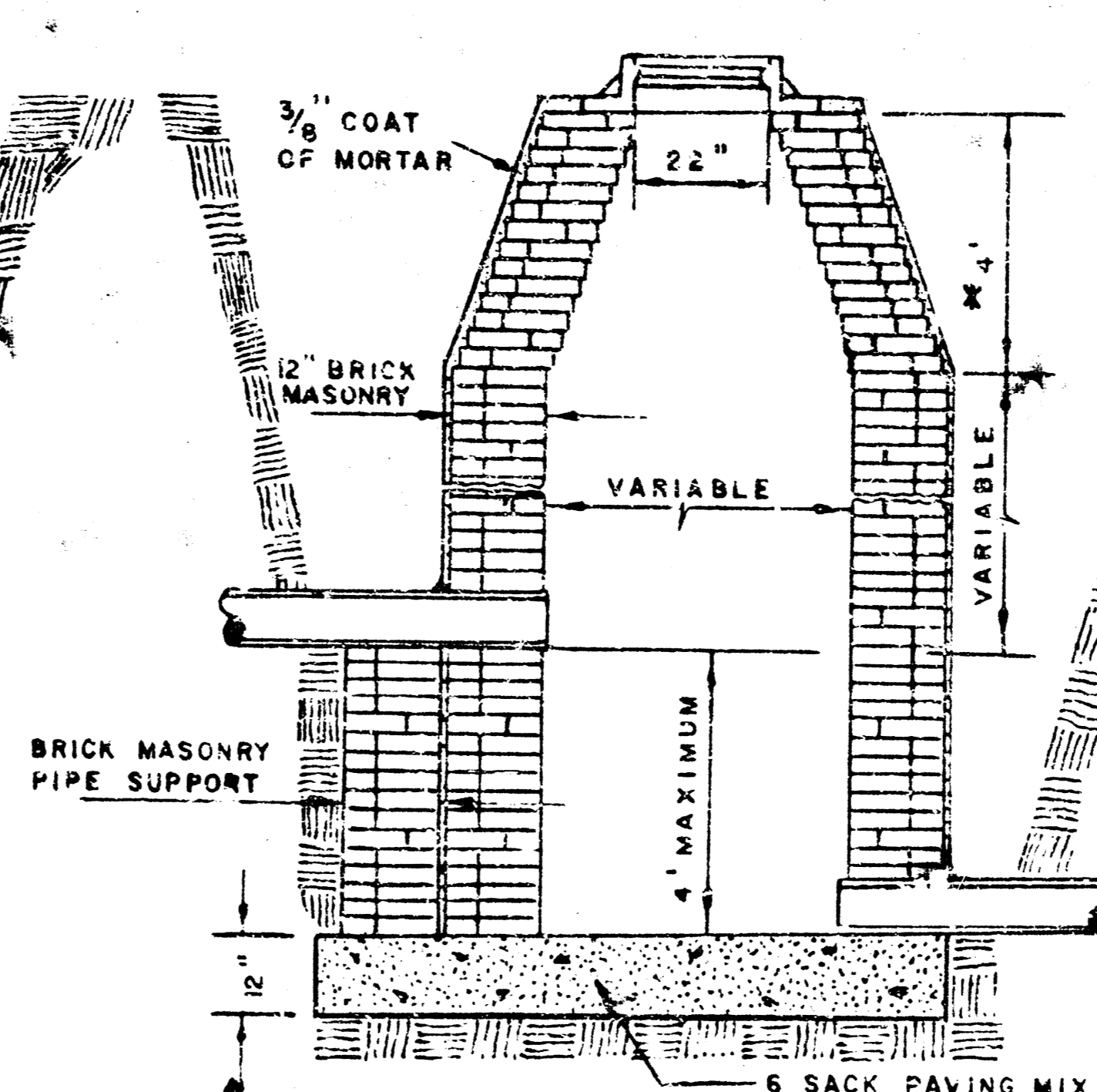
STANDARD MANHOLE TYPE "A"



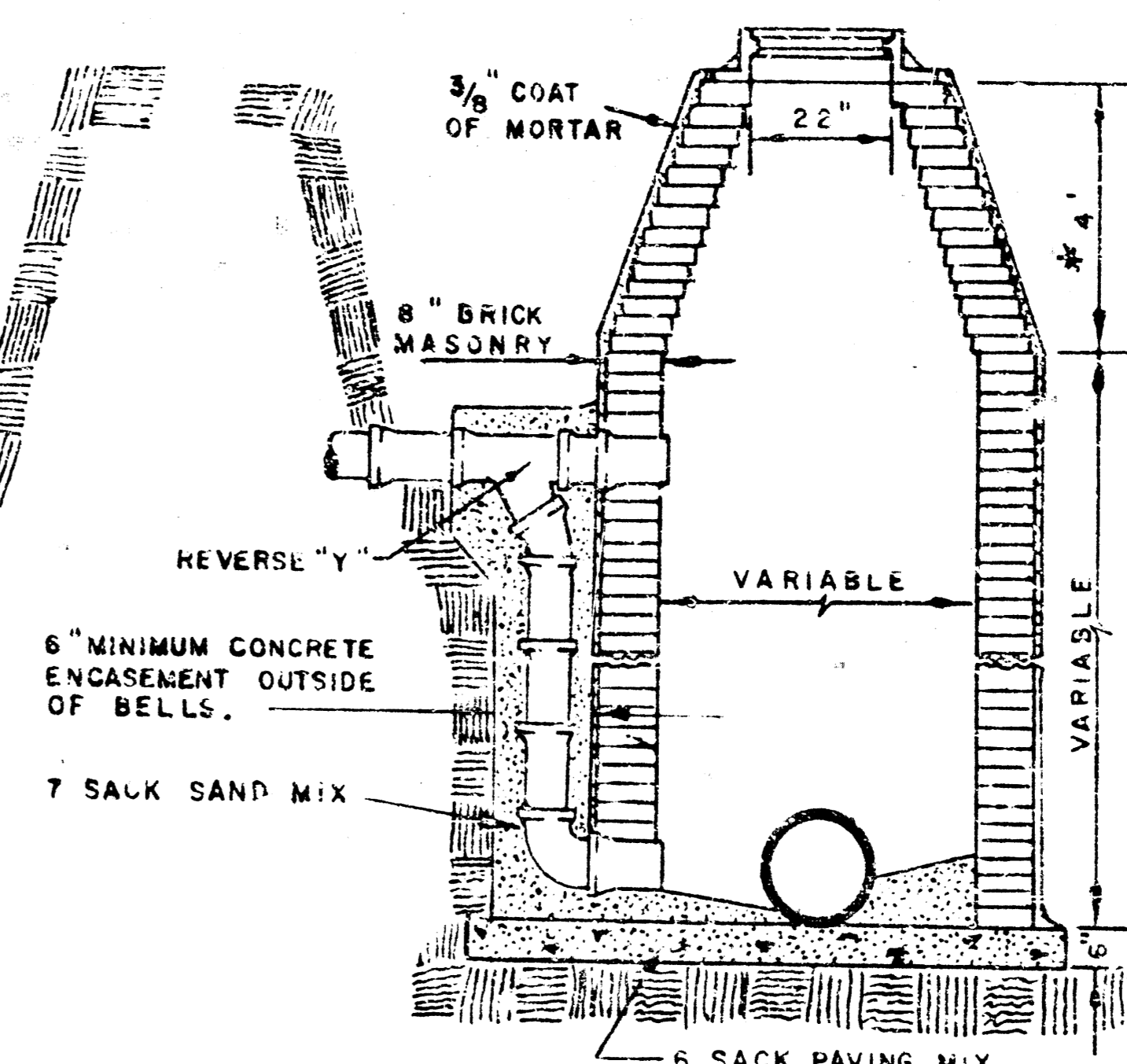
STANDARD MANHOLE TYPE "B"



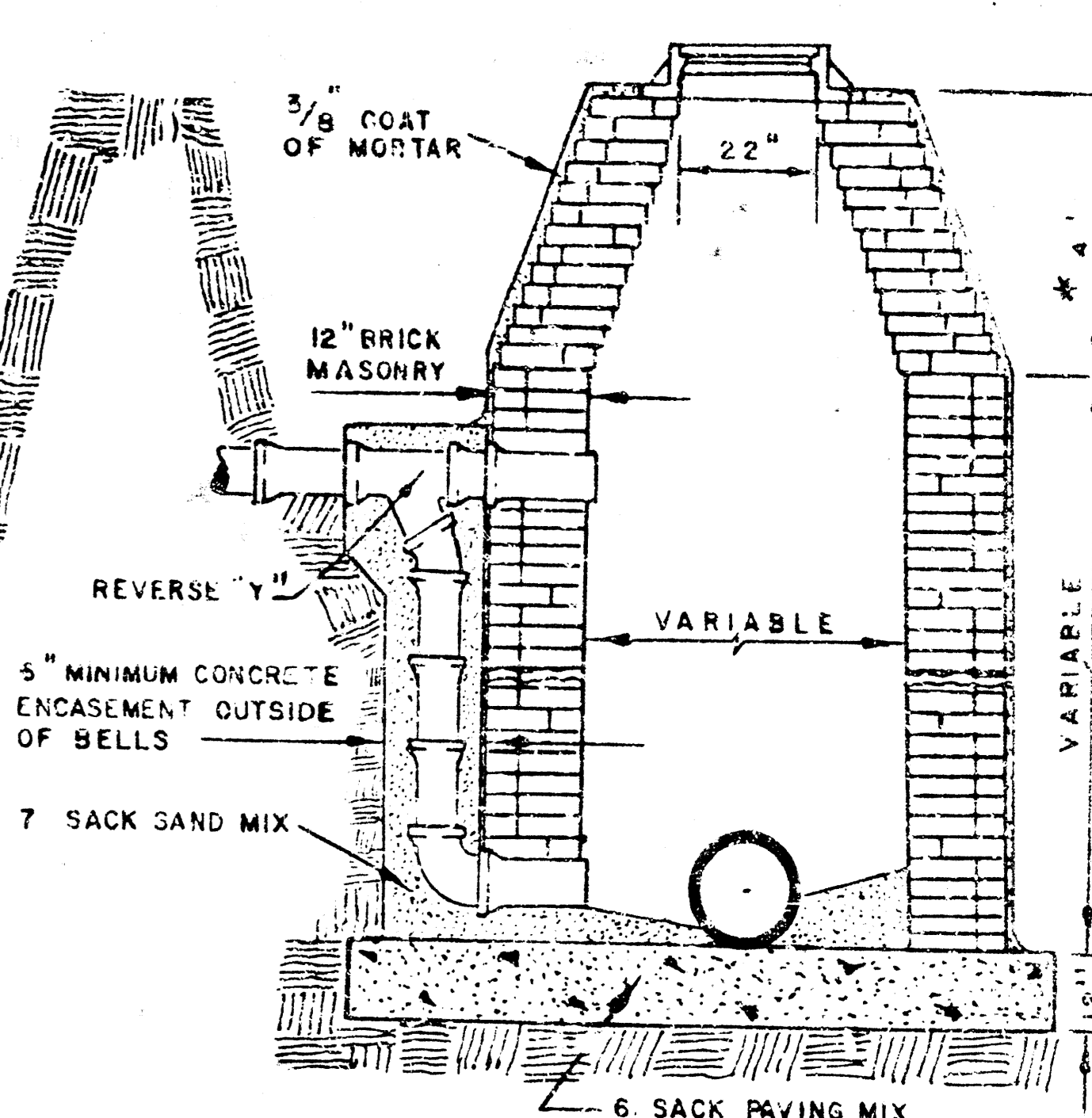
DROP MANHOLE TYPE "A"



DROP MANHOLE TYPE "B"

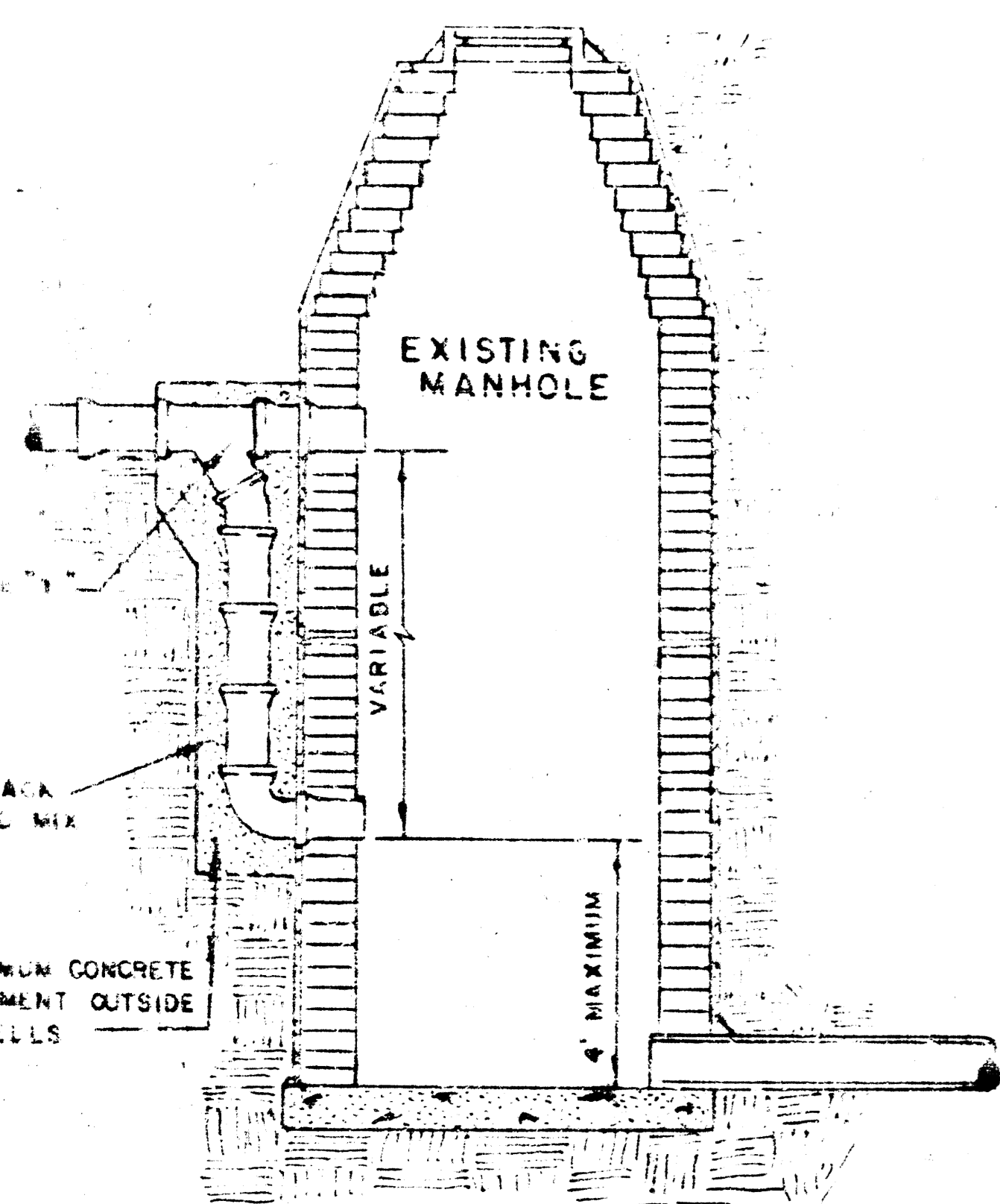


OUTSIDE DROP MANHOLE TYPE "A"

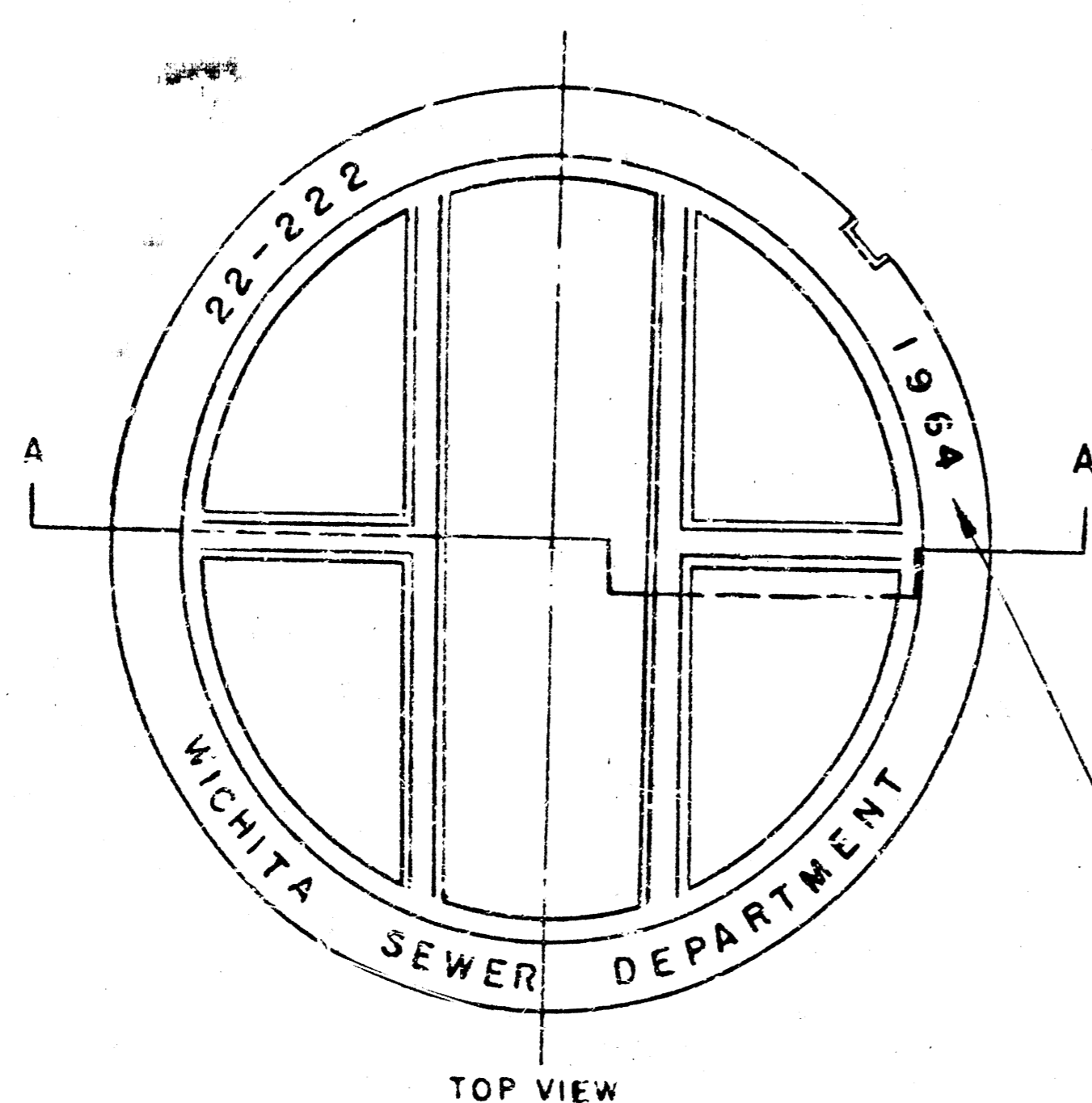


OUTSIDE DROP MANHOLE TYPE "B"

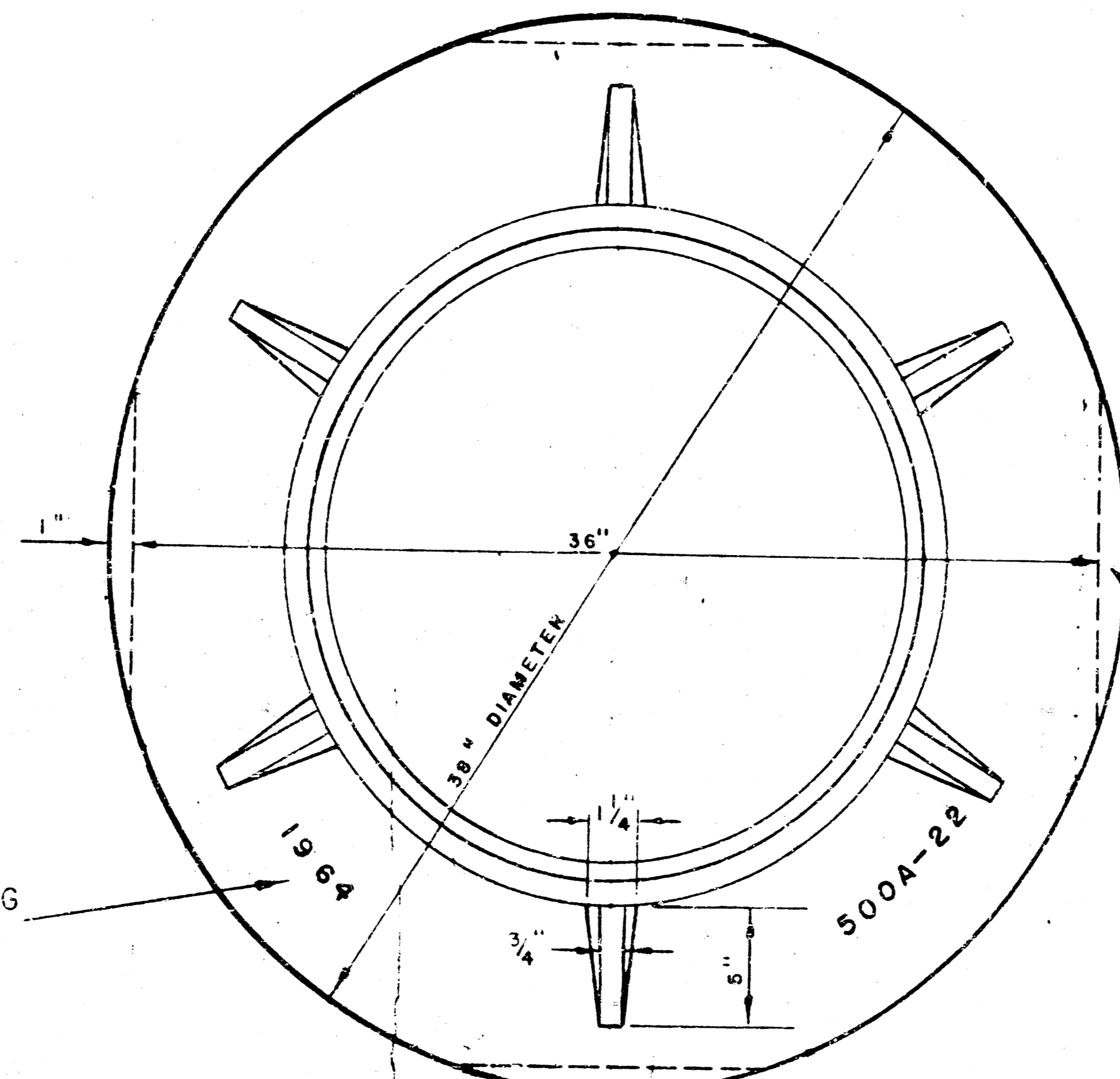
\* DRAW = 6' ON 5' DIA. M.H.



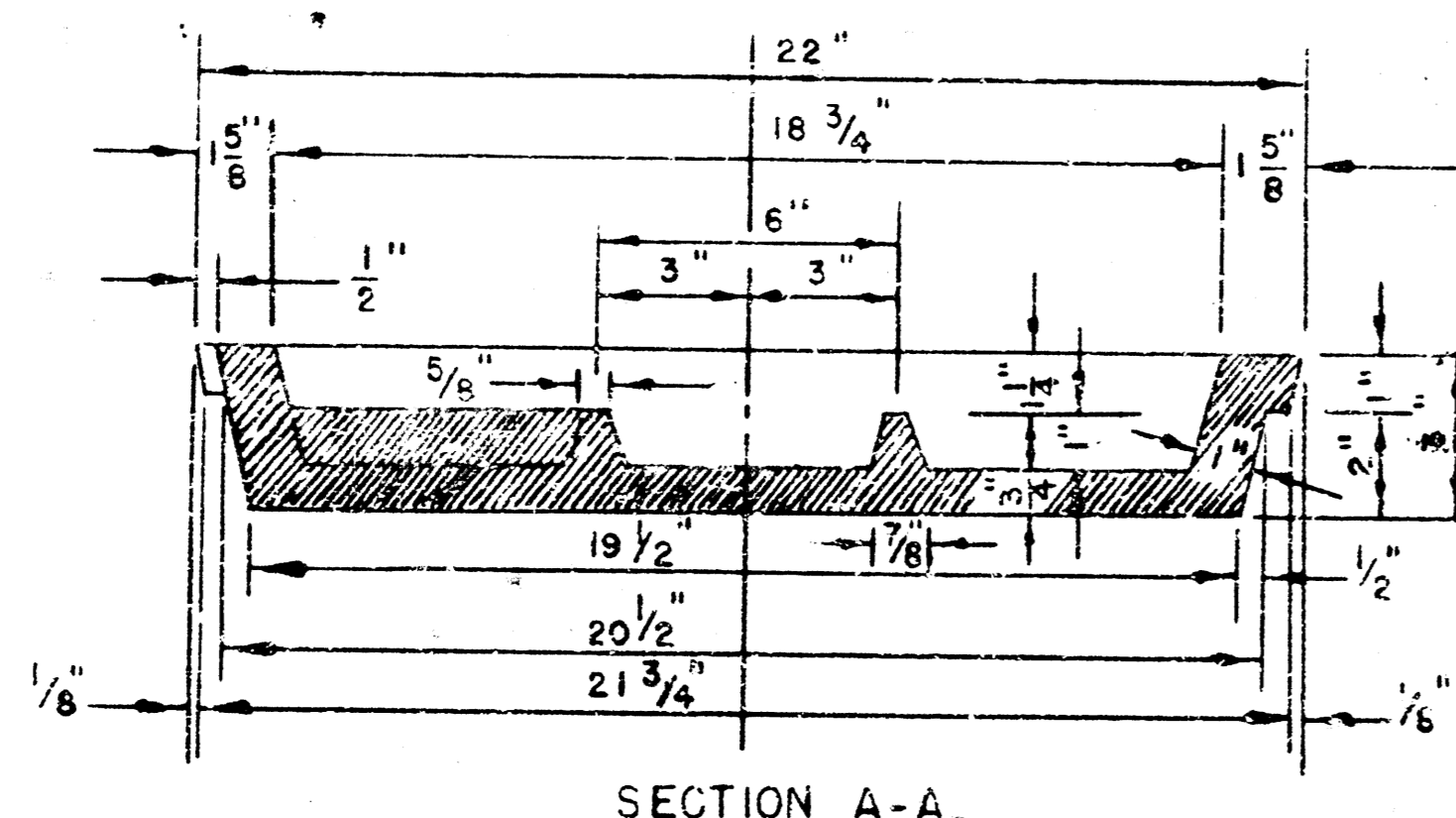
DETAIL OF DROP STACK FOR EXISTING MANHOLES IN GROUND WATER



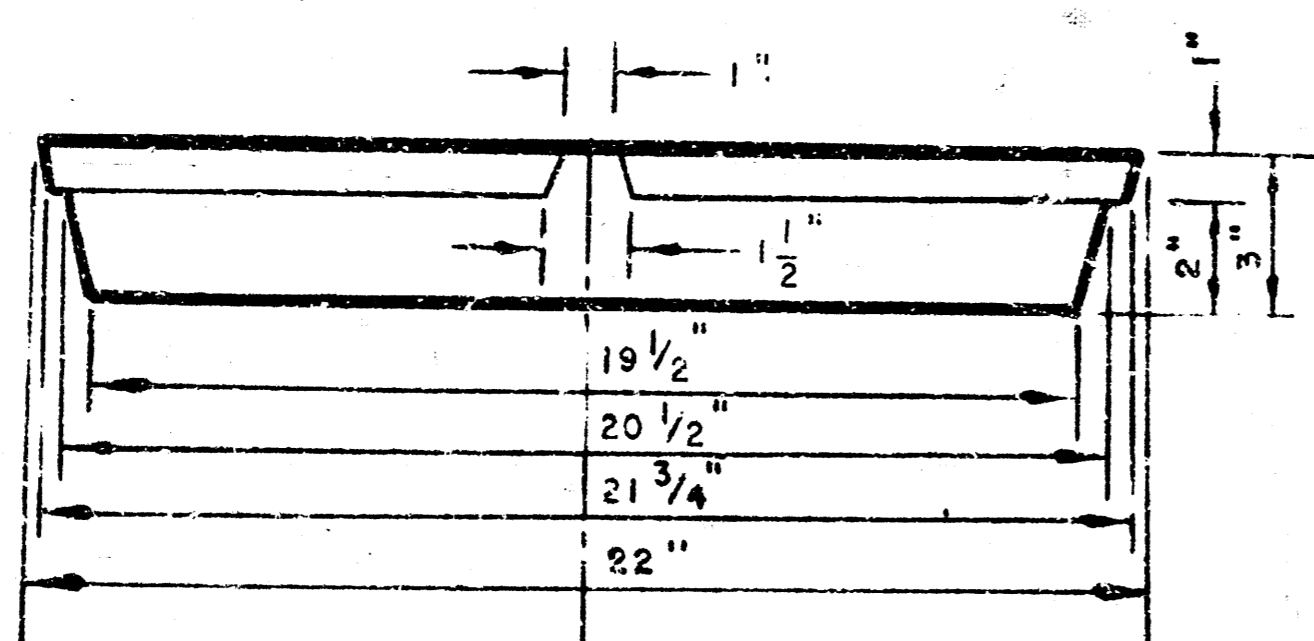
TOP VIEW MANHOLE COVER WEIGHT 110 lbs.



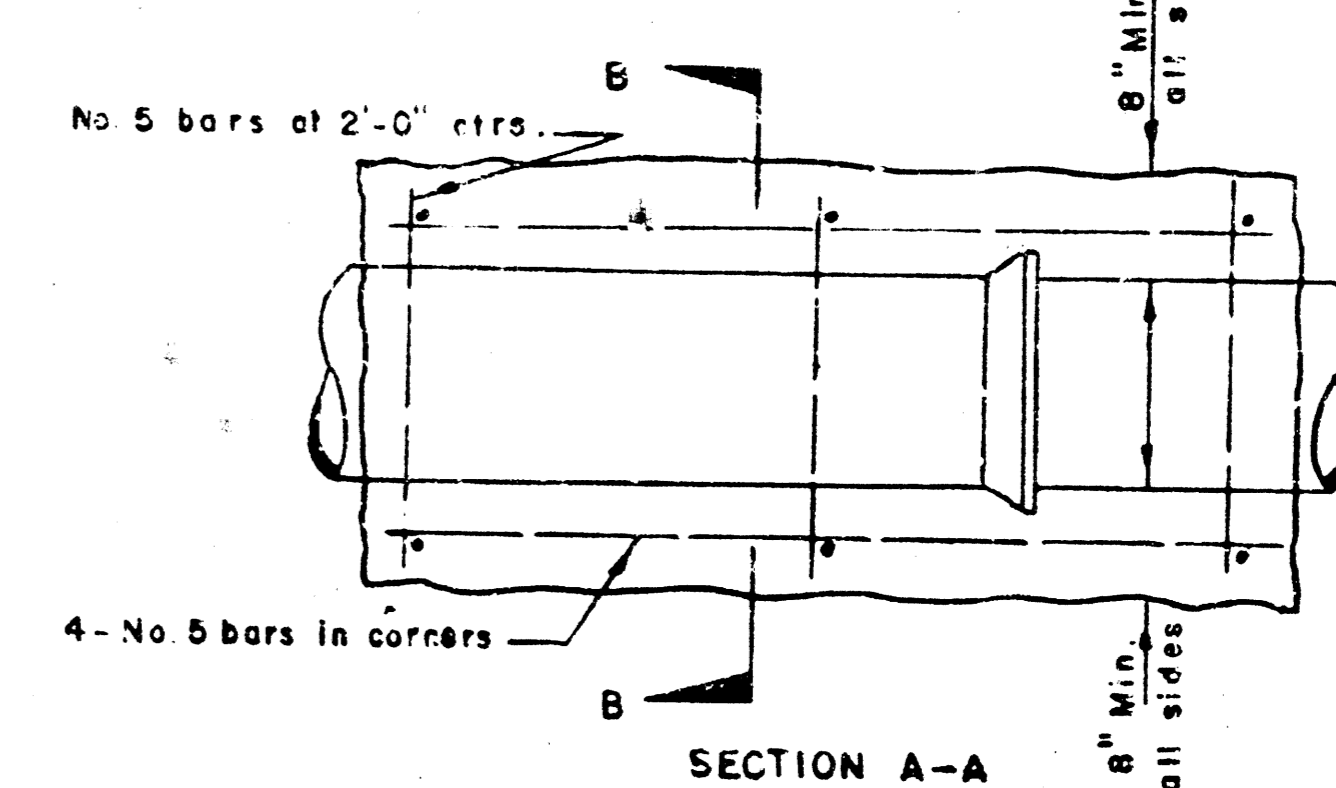
TOP VIEW MANHOLE RING WEIGHT 355 lbs.



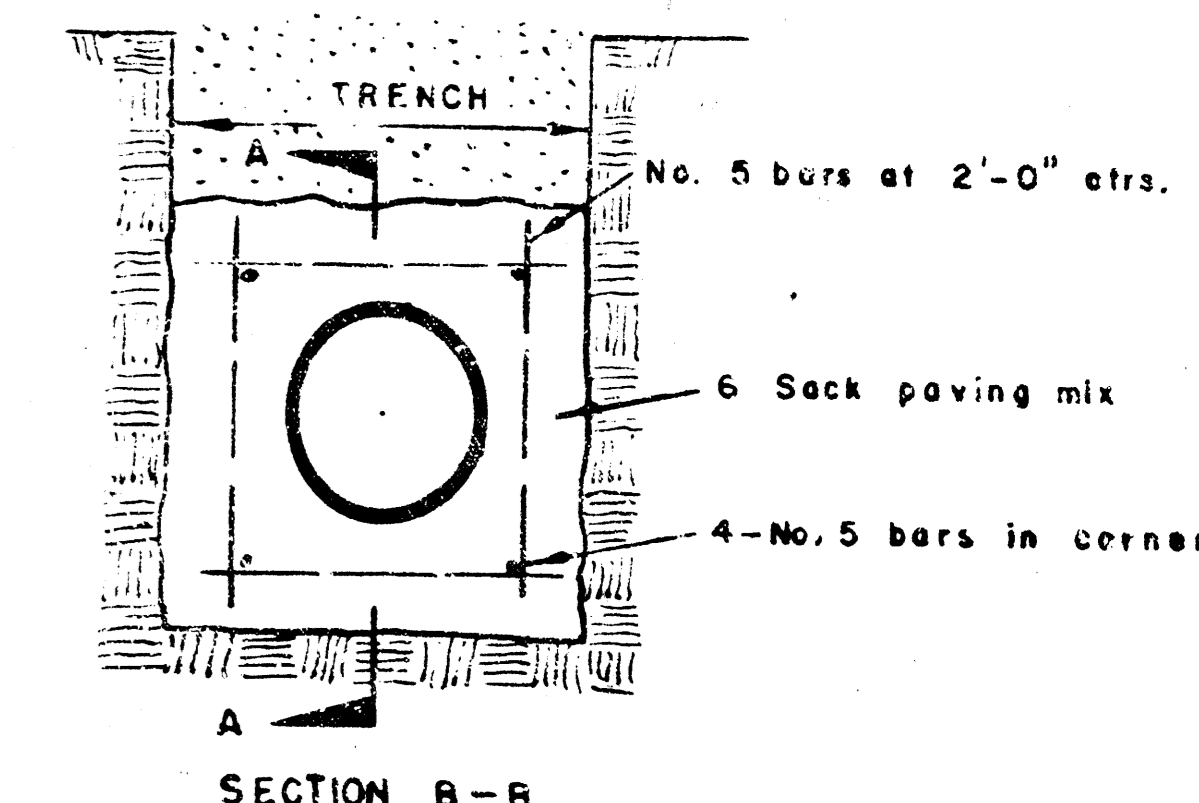
SECTION A-A MANHOLE COVER



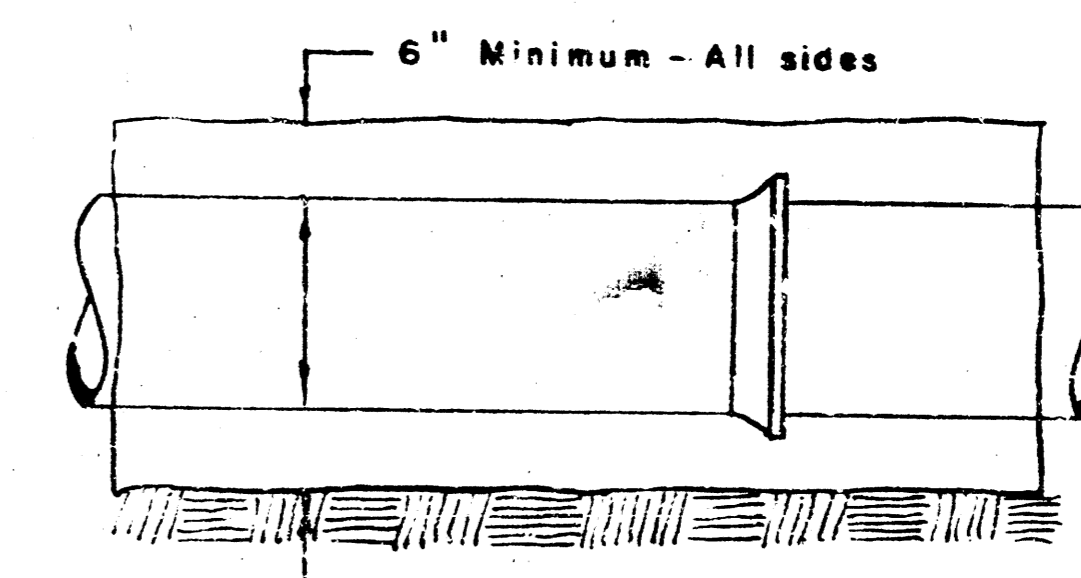
SECTION A-A MANHOLE COVER



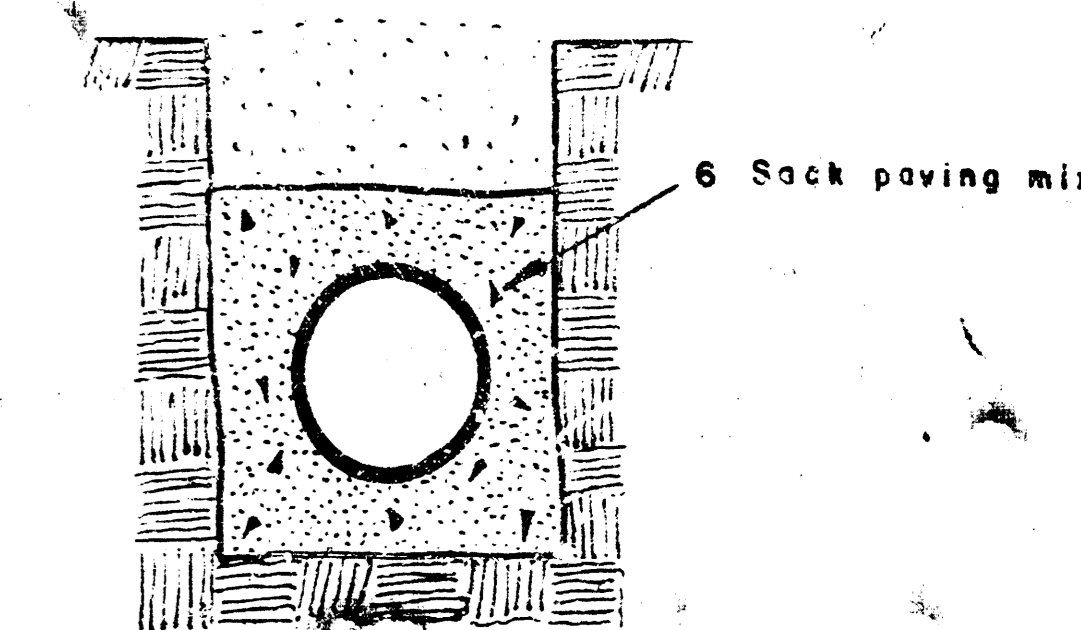
SECTION A-A REINFORCED CONCRETE ENCASEMENT FOR STRENGTH



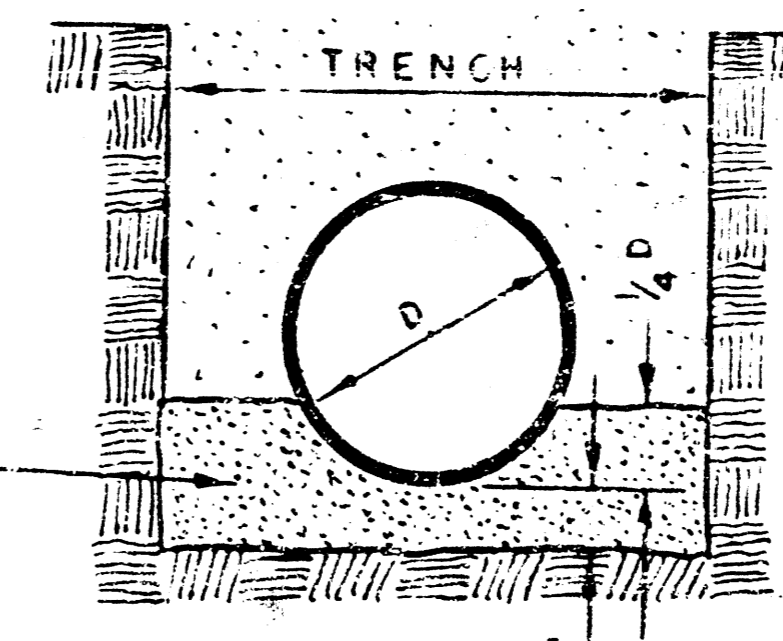
SECTION B-B



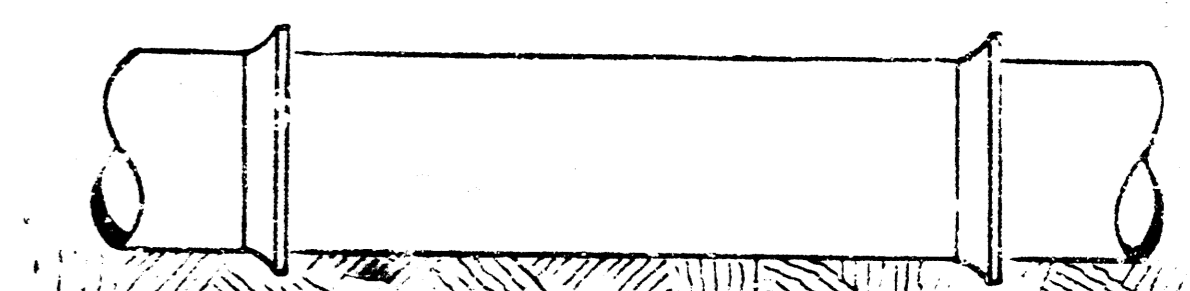
SECTION A-A CONCRETE ENCASEMENT FOR COVER



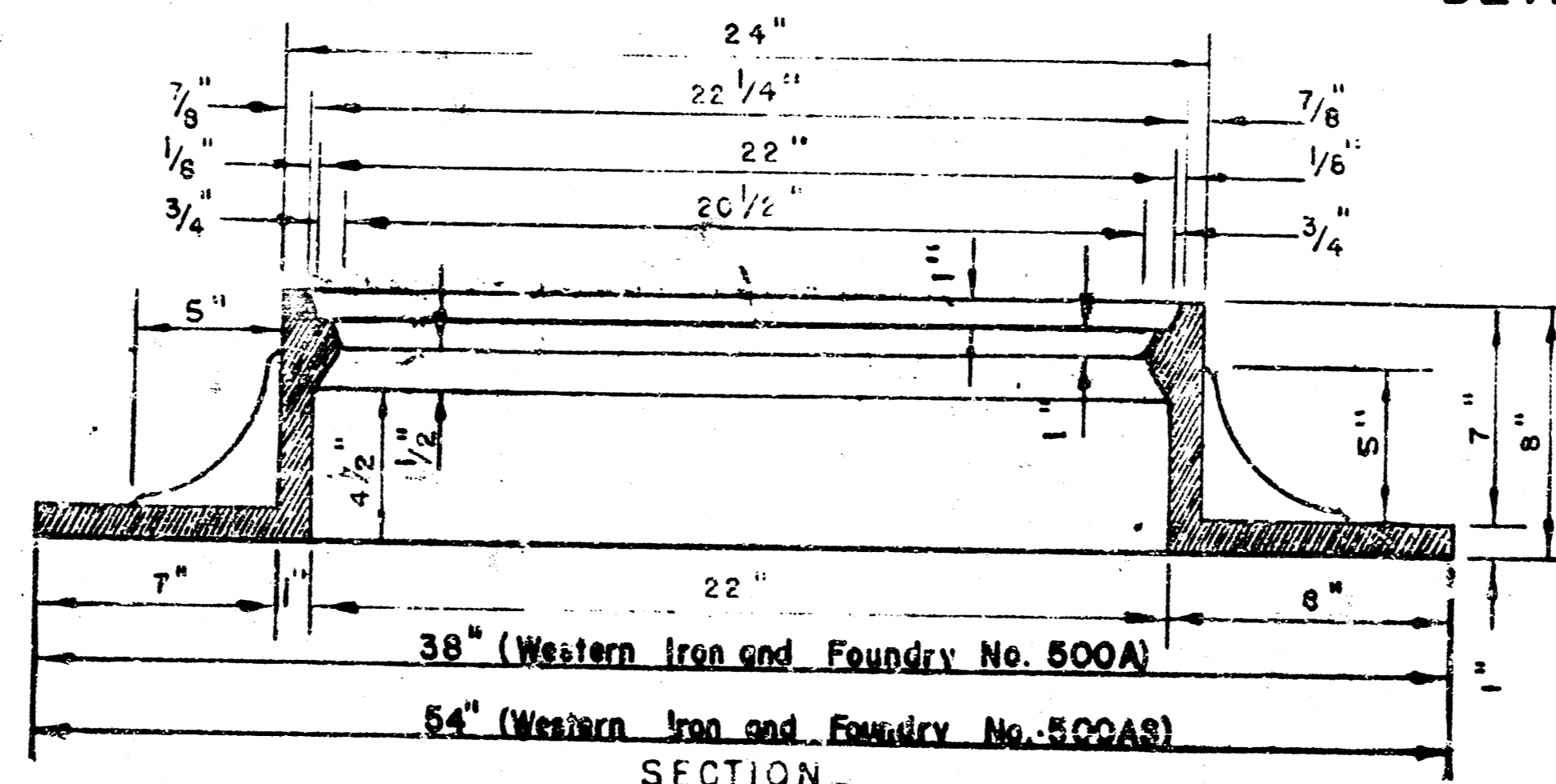
SECTION B-B



DETAIL OF CONCRETE CRADLE



ORDINARY BEDDING METHOD FOR CLAY PIPE



SECTION MANHOLE RING

MANHOLES

THE CONCRETE USED FOR MORTAR IN MANHOLES SHALL CONTAIN 6 SACKS OF CEMENT PER CUBIC YARD.

STANDARD MANHOLES AND DROP MANHOLES, REGARDLESS OF DIAMETER, SHALL BE BID AT ONE PRICE AS STANDARD MANHOLES.

SINGLE OR DOUBLE OUTSIDE DROP MANHOLES SHALL BE BID AT ONE PRICE AS OUTSIDE DROP MANHOLES.

ALL MANHOLES WITH PIPES LARGER THAN 24" SHALL BE 5' DIAMETER UNLESS

DETAILS OF SEWER APPURTENANCE ADOPTED AS STANDARD DESIGN BY



