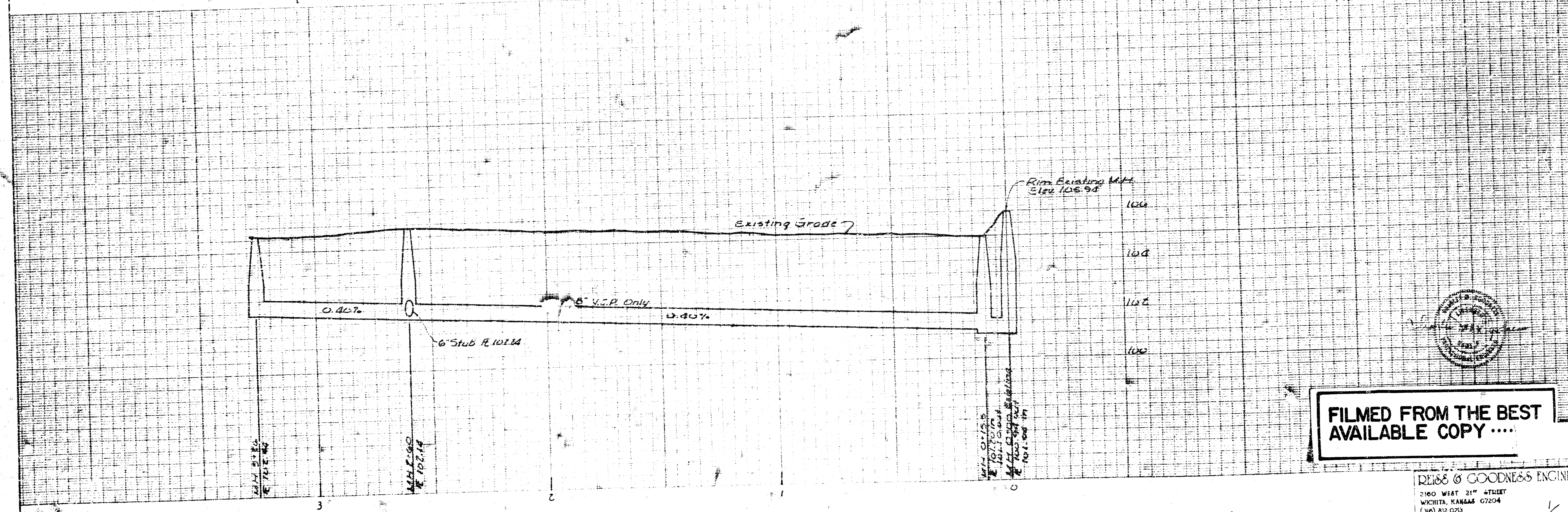
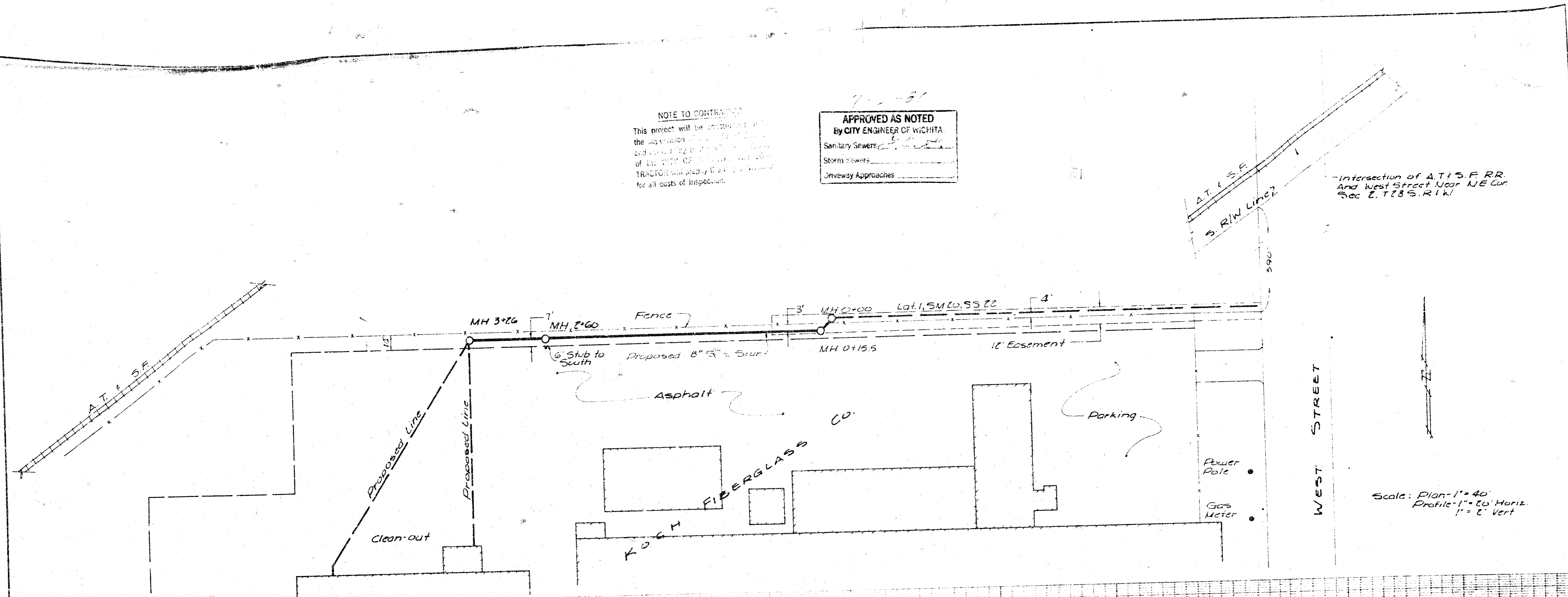


NOTE TO CONTRACTOR
 This project will be completed in accordance with the specifications of the City of Wichita and the City Engineer of Wichita. The CONTRACTOR will be responsible for all costs of Inspection.

APPROVED AS NOTED
 by CITY ENGINEER OF WICHITA
 Sanitary Sewers
 Storm Sewers
 Driveway Approaches

Intersection of A.T. & S.F. R.R.
 And West Street Near NE Cor.
 Sec. 2, T28S, R1W



Scale: Plan-1"=40'
 Profile-1"=2.0' Horiz.
 1"=2' Vert



FILMED FROM THE BEST AVAILABLE COPY....

REISS & GOODNESS ENGINEERS
 2100 WEST 21ST STREET
 WICHITA, KANSAS 67204
 (316) 832-0223

City of Wichita Project No. 468-76-245-00000-000-000-006

KOCH FIBERGLASS PRODUCTS COMPANY

SCALE GIVEN PROJECT NO.
 DATE 6-29-81 SHEET 1 OF 1