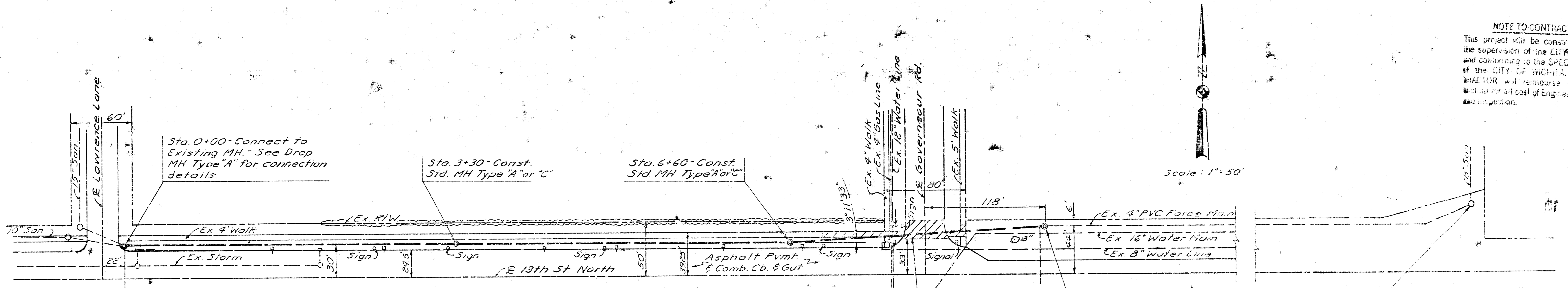


NOTE TO CONTRACTOR
 This project will be constructed under the supervision of the CITY ENGINEER and conforming to the SPECIFICATIONS of the CITY OF WICHITA. The CONTRACTOR will reimburse the City of Wichita for all cost of Engineering, Plans and Inspection.



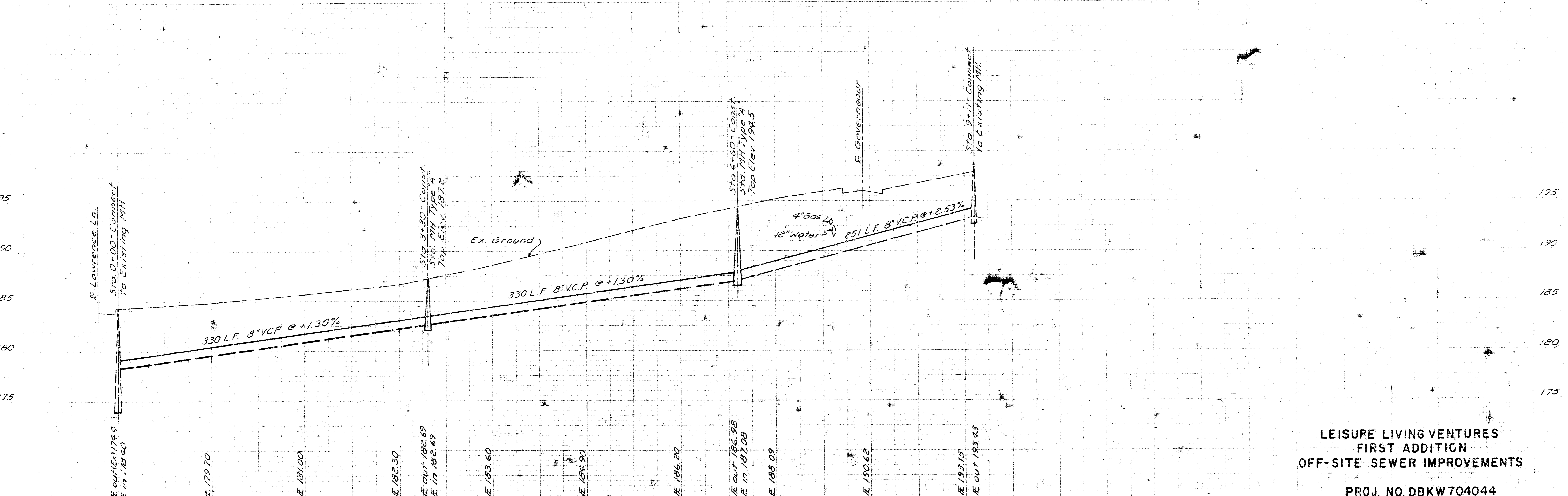
Scale: 1" = 50'

Remove & Replace 465 S.F. Conc. Sidewalk, 75 S.Y. Conc. Pvmt. & 36 L.F. Integral Curb.

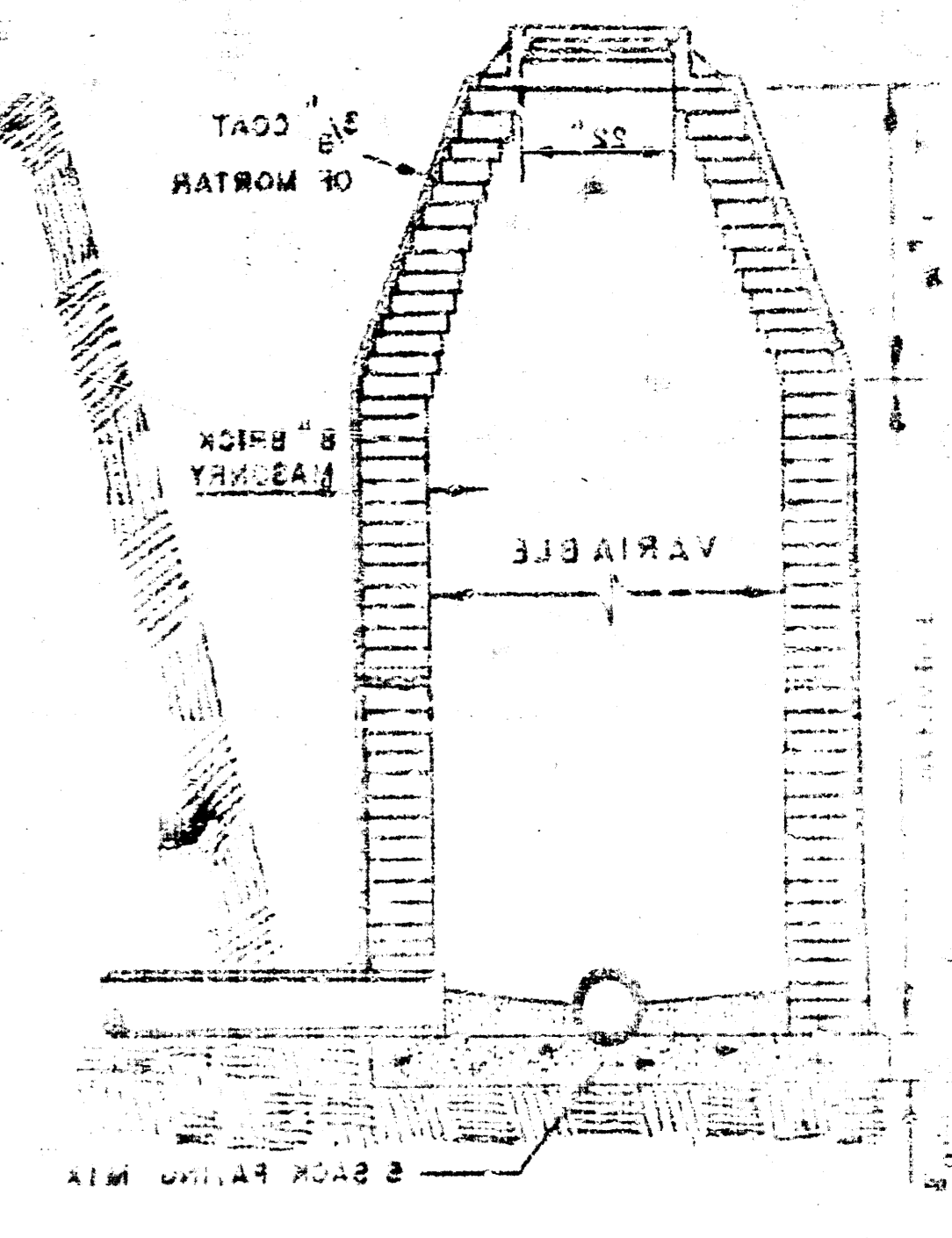
Note: Contractor shall verify the location of all underground utility crossings prior to beginning the trenching operation.

8-1-74
 APPROVED AS NOTED
 By CITY ENGINEER OF WICHITA
 Sanitary Sewers: D.E.S.
 Storm Sewers: _____
 Driveway Approaches: _____

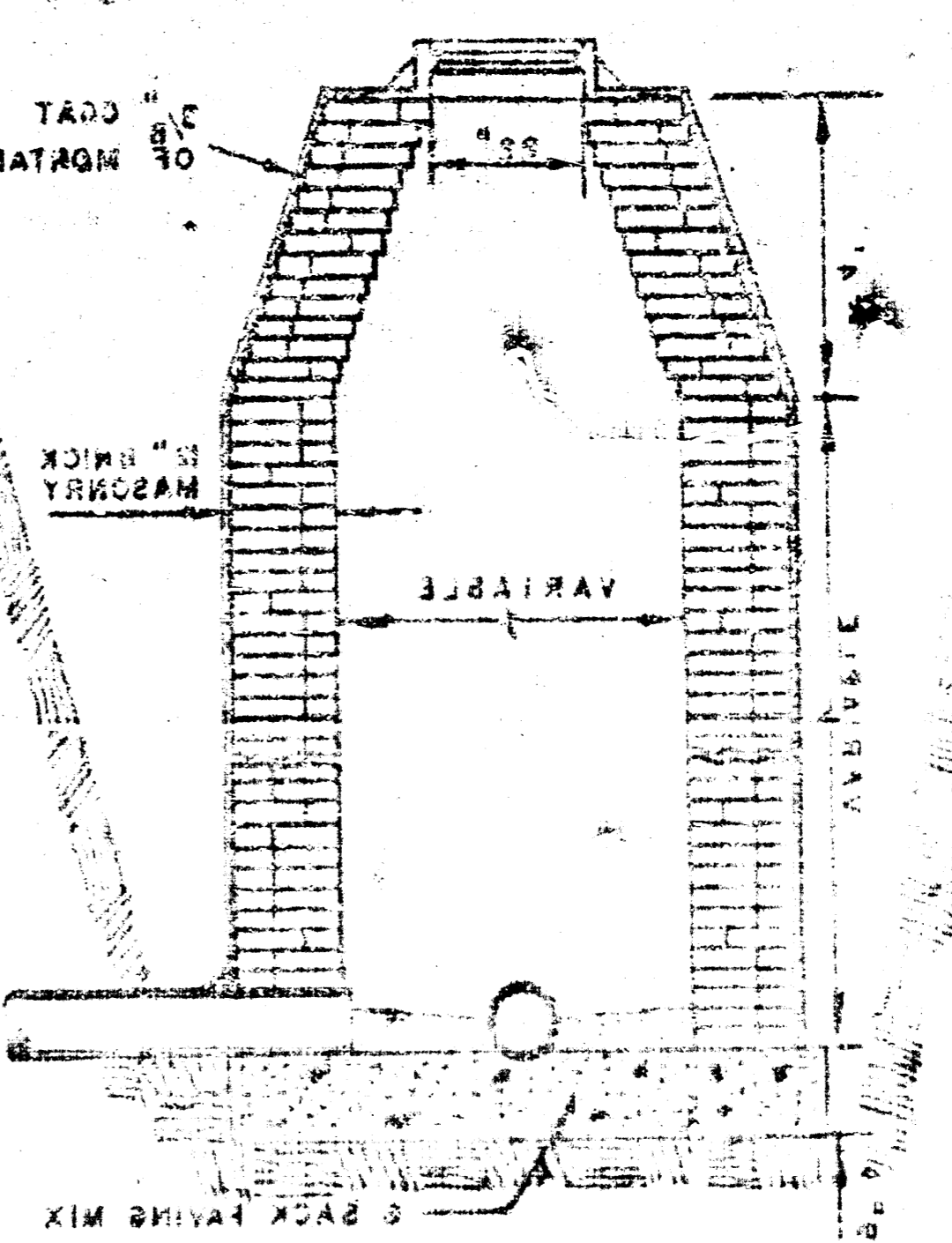
Bench Mark: City Disc - East end of North handrail - W. of Lawrence - Elev. 182.19



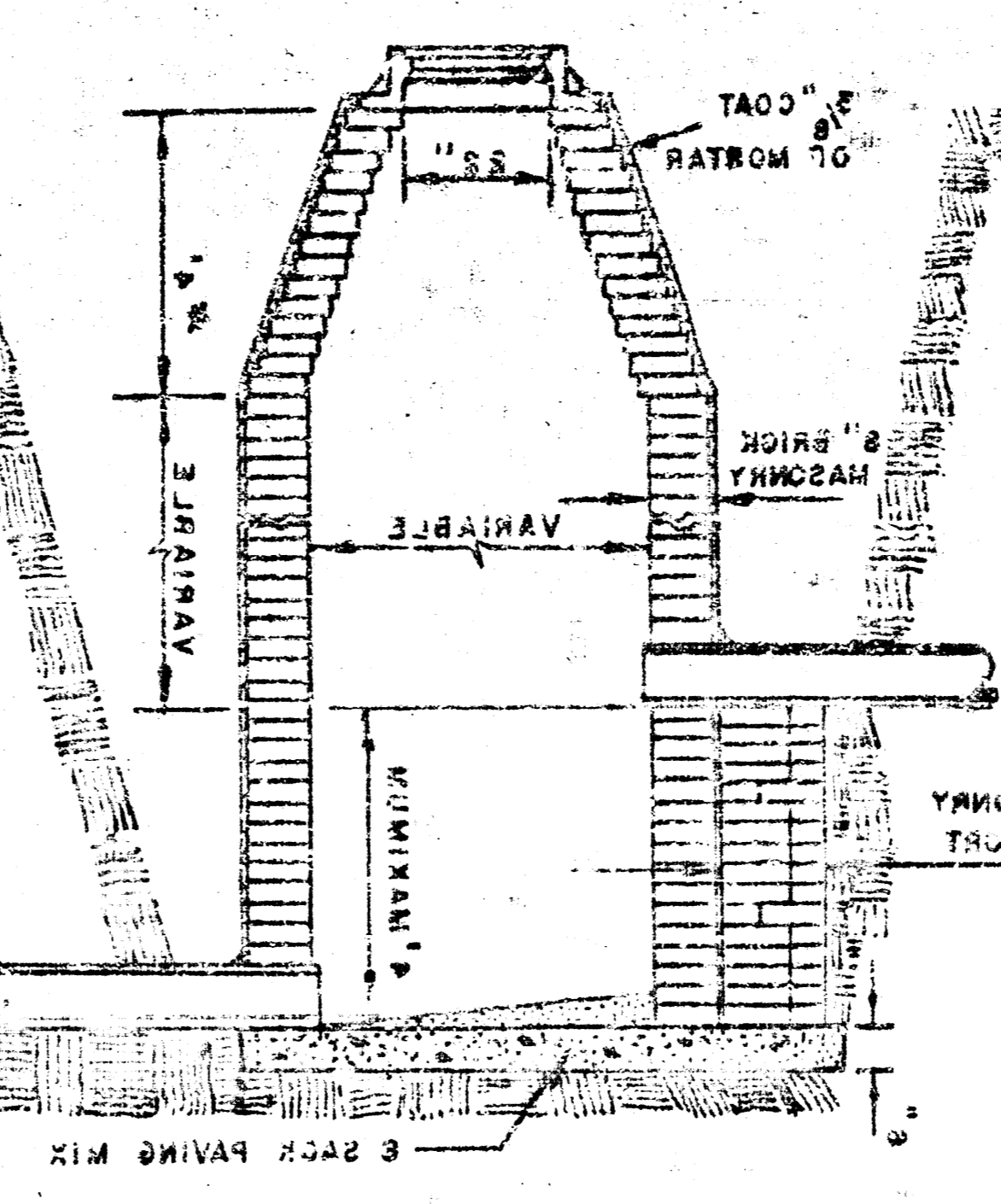
LEISURE LIVING VENTURES
 FIRST ADDITION
 OFF-SITE SEWER IMPROVEMENTS
 PROJ. NO. DBKW704044



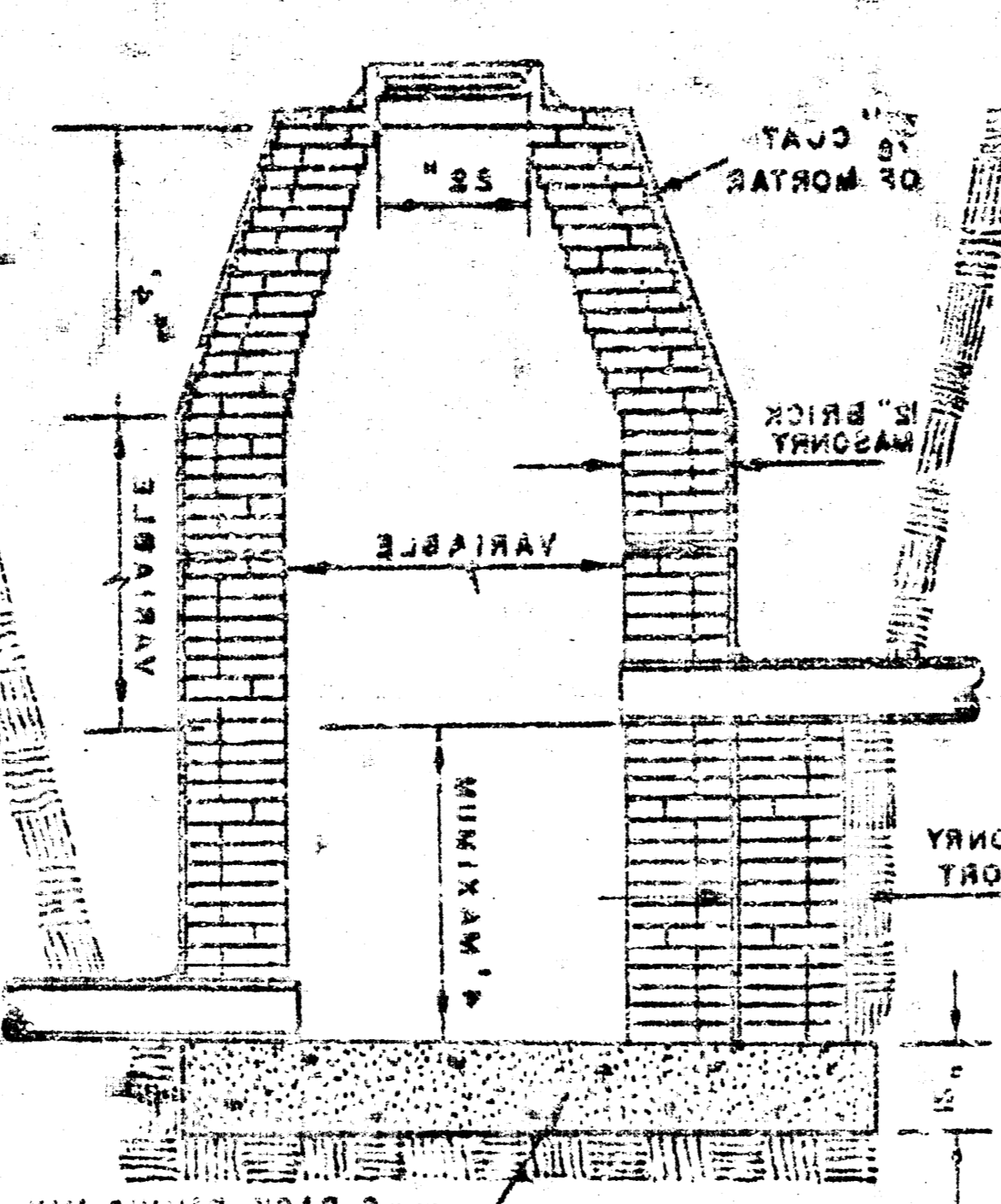
STANDARD MANHOLE TYPE "A"



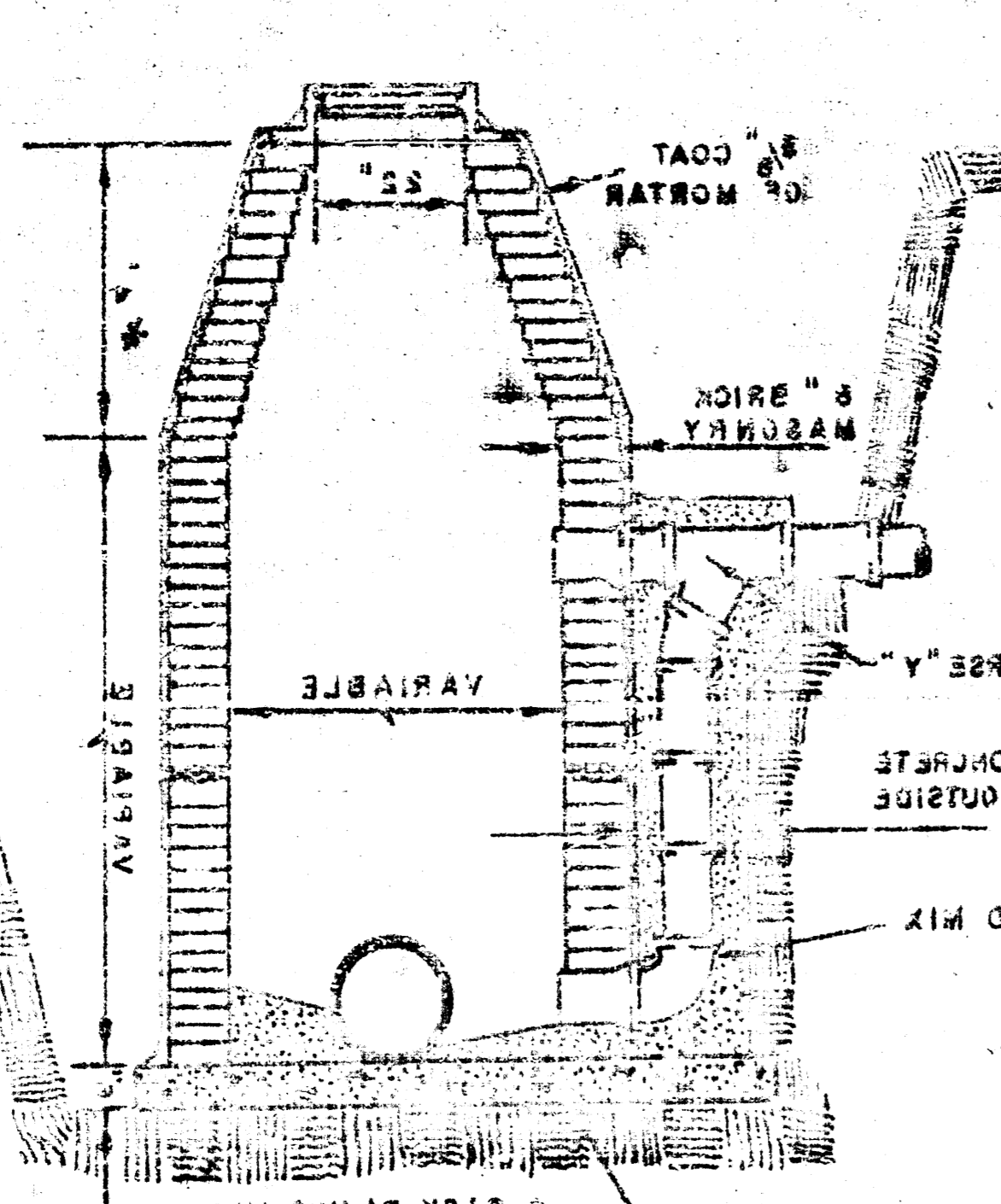
STANDARD MANHOLE TYPE "B"



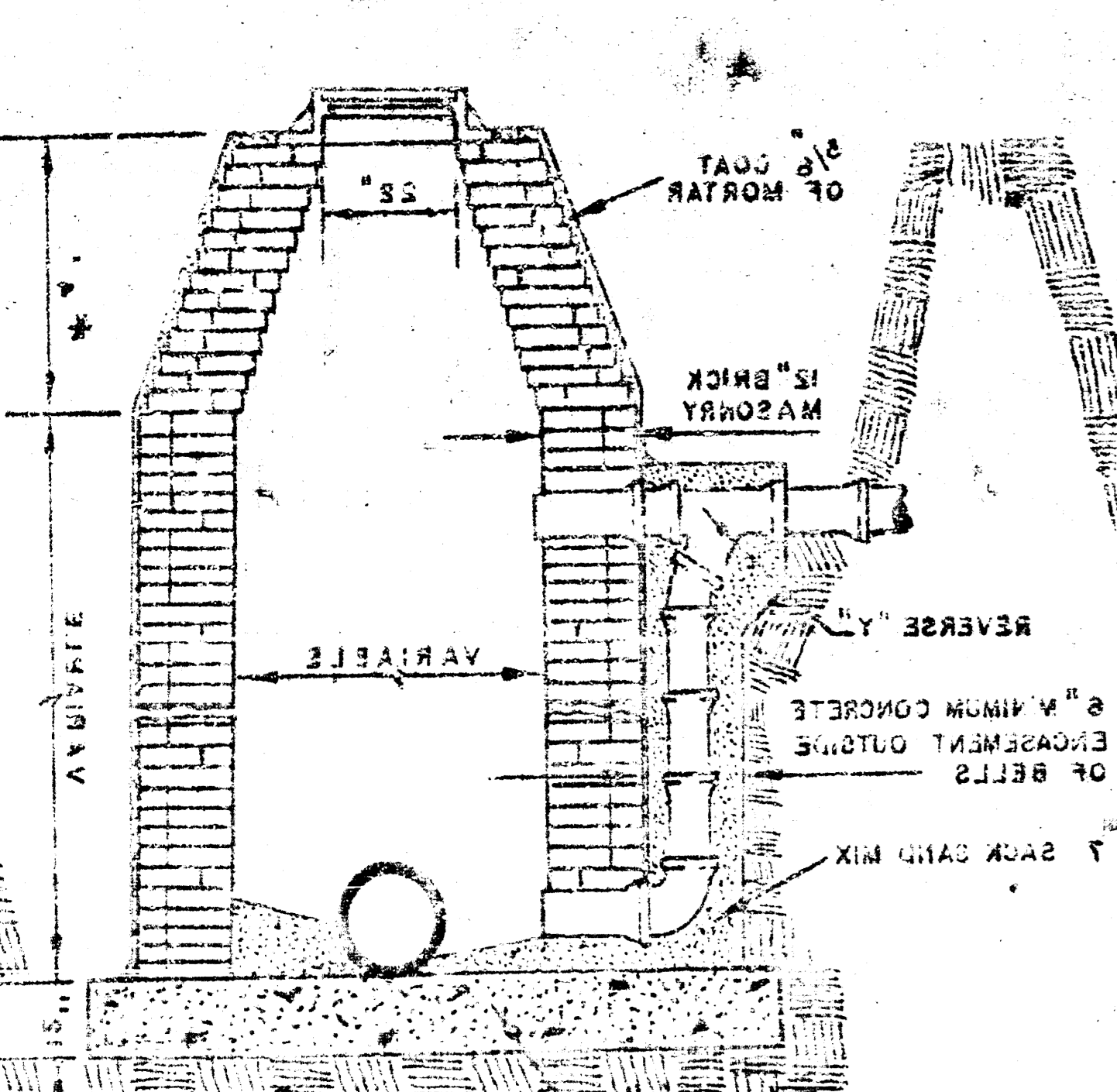
DROP MANHOLE TYPE "A"



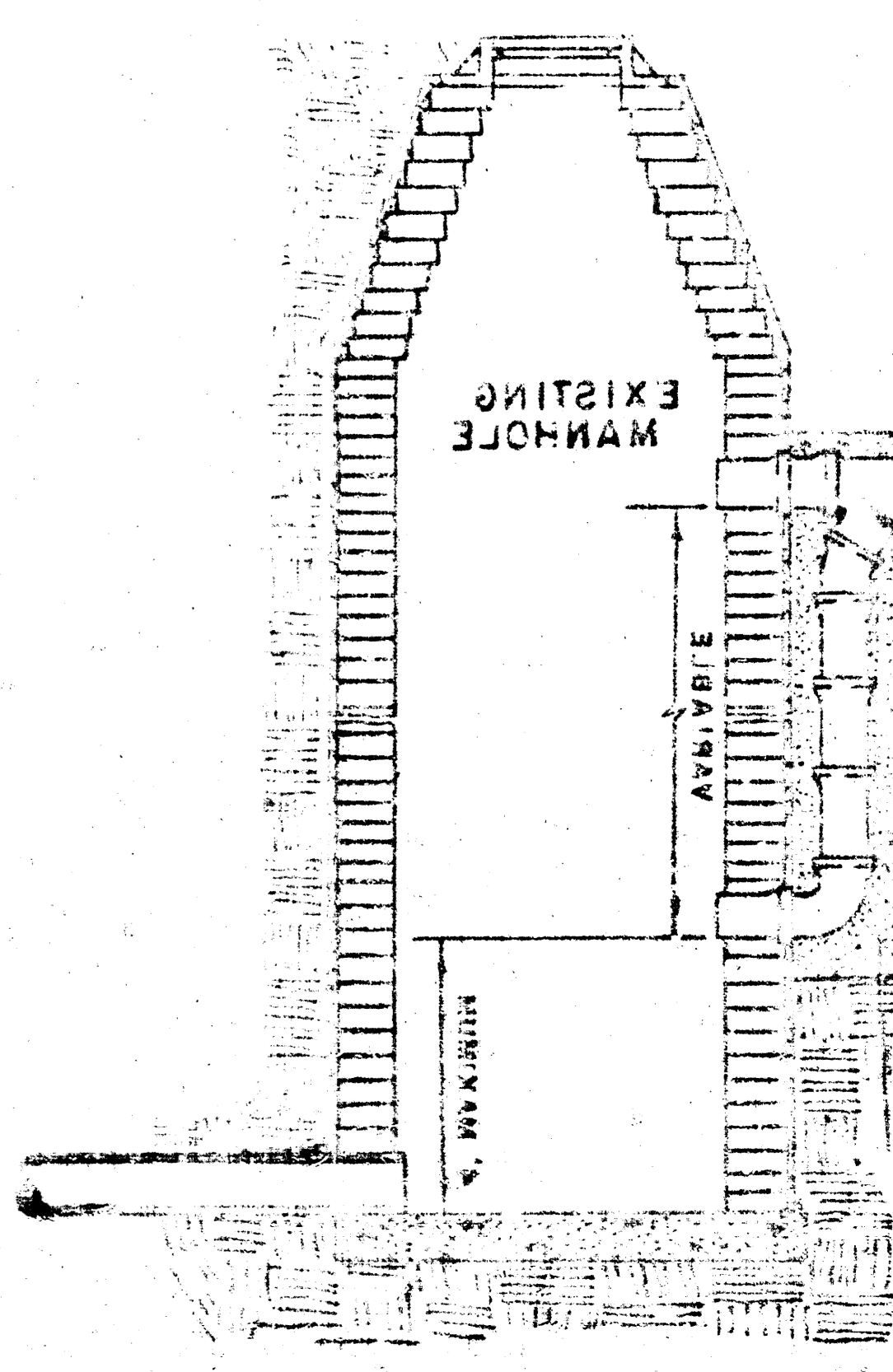
DROP MANHOLE TYPE "B"



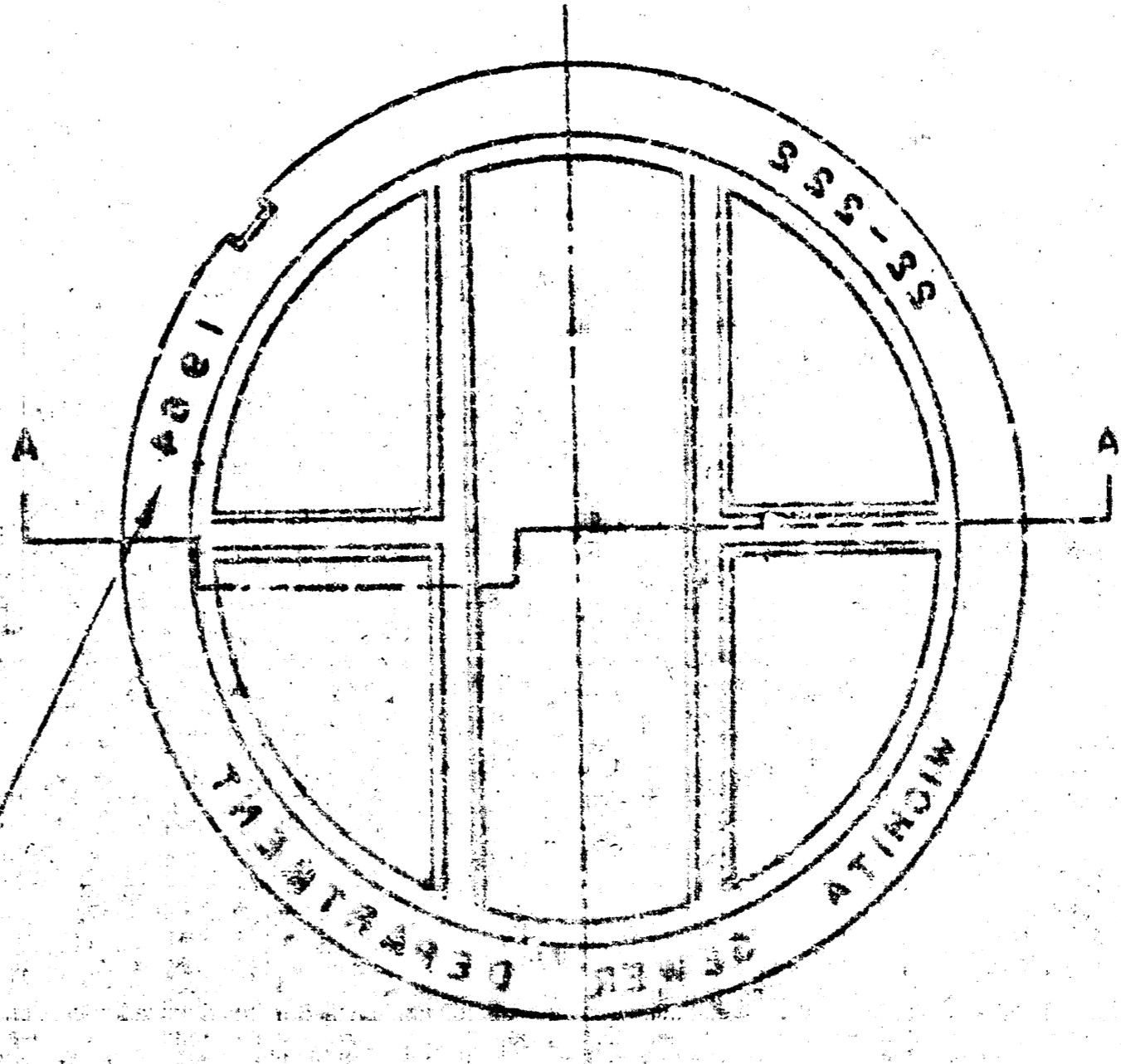
OUTSIDE DROP MANHOLE TYPE "A"



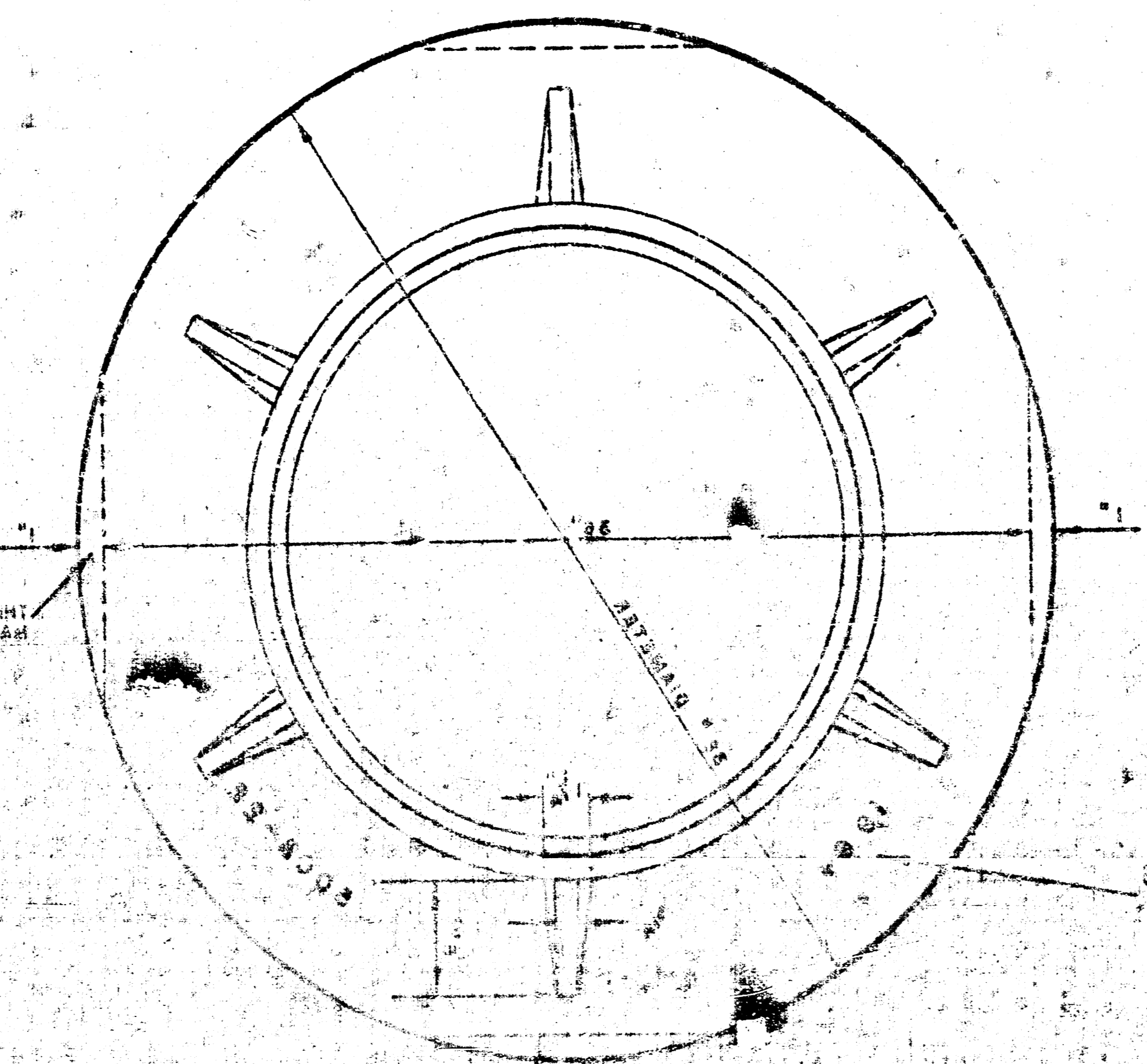
OUTSIDE DROP MANHOLE TYPE "B"



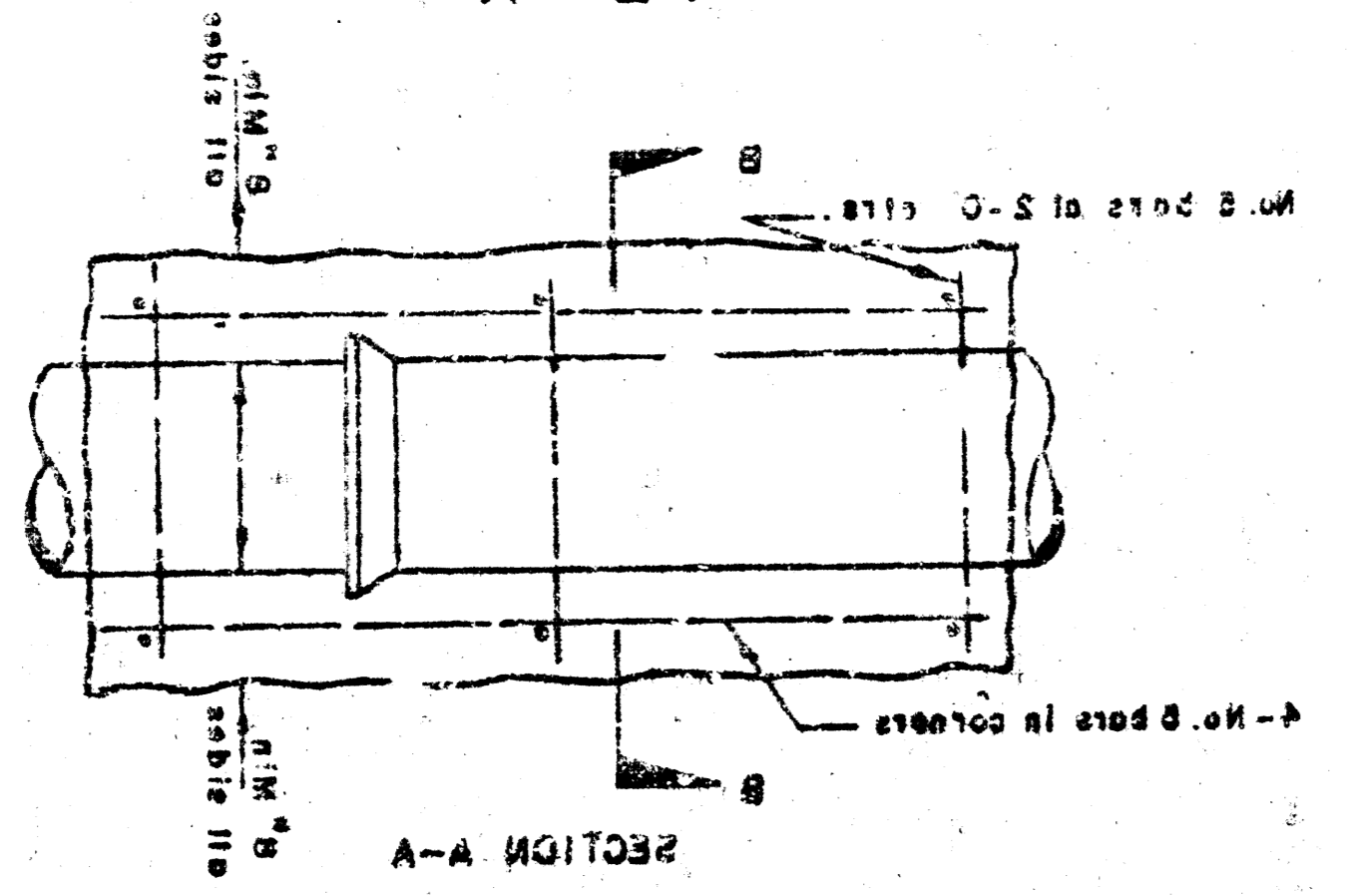
DETAIL OF DROP STACK FOR EXISTING MANHOLES IN GROUND WATER



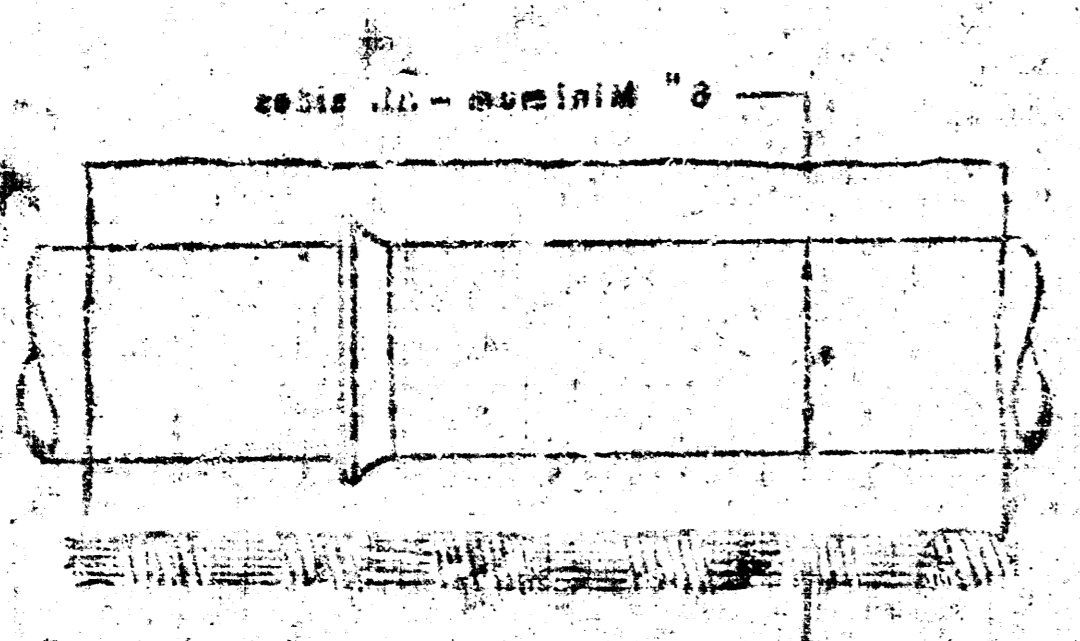
MANHOLE COVER



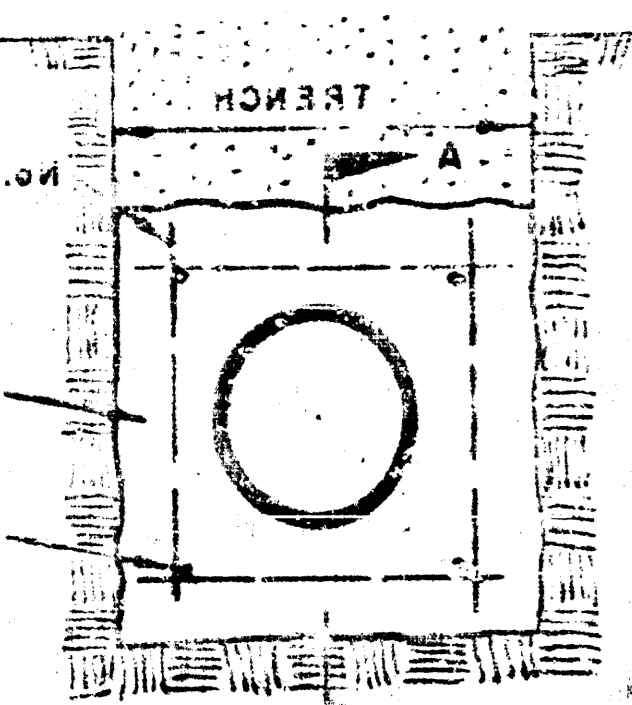
MANHOLE RING



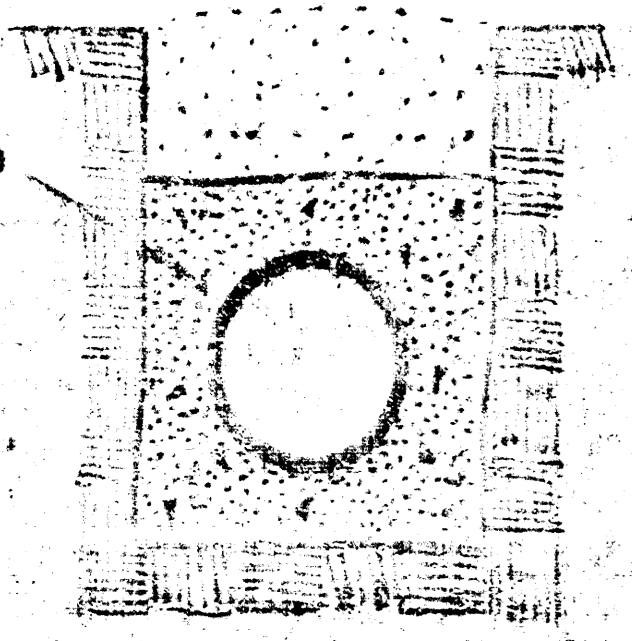
REINFORCED CONCRETE ENCLOSURE FOR STRENGTH



CONCRETE ENCLOSURE FOR COVER

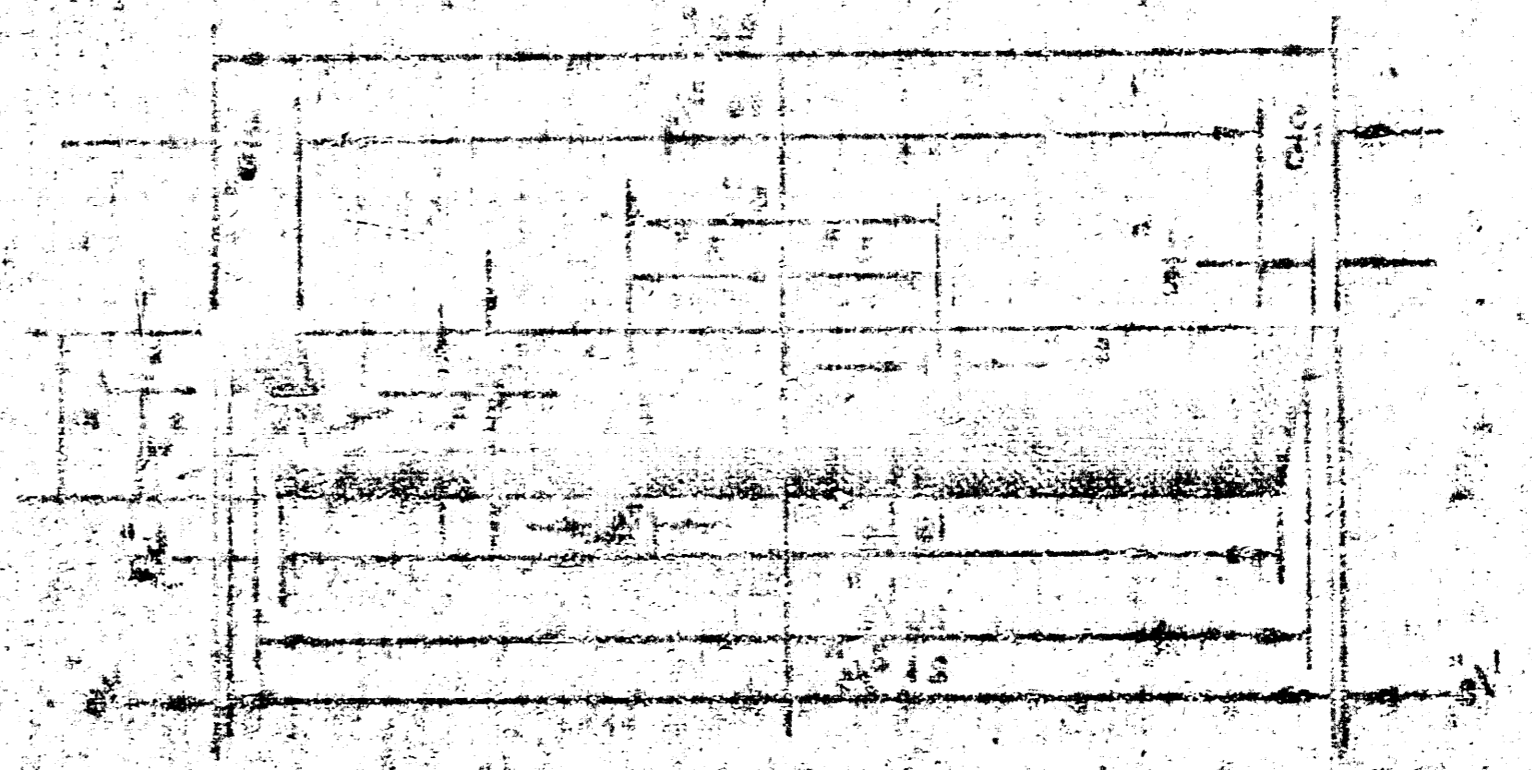


SECTION B-B

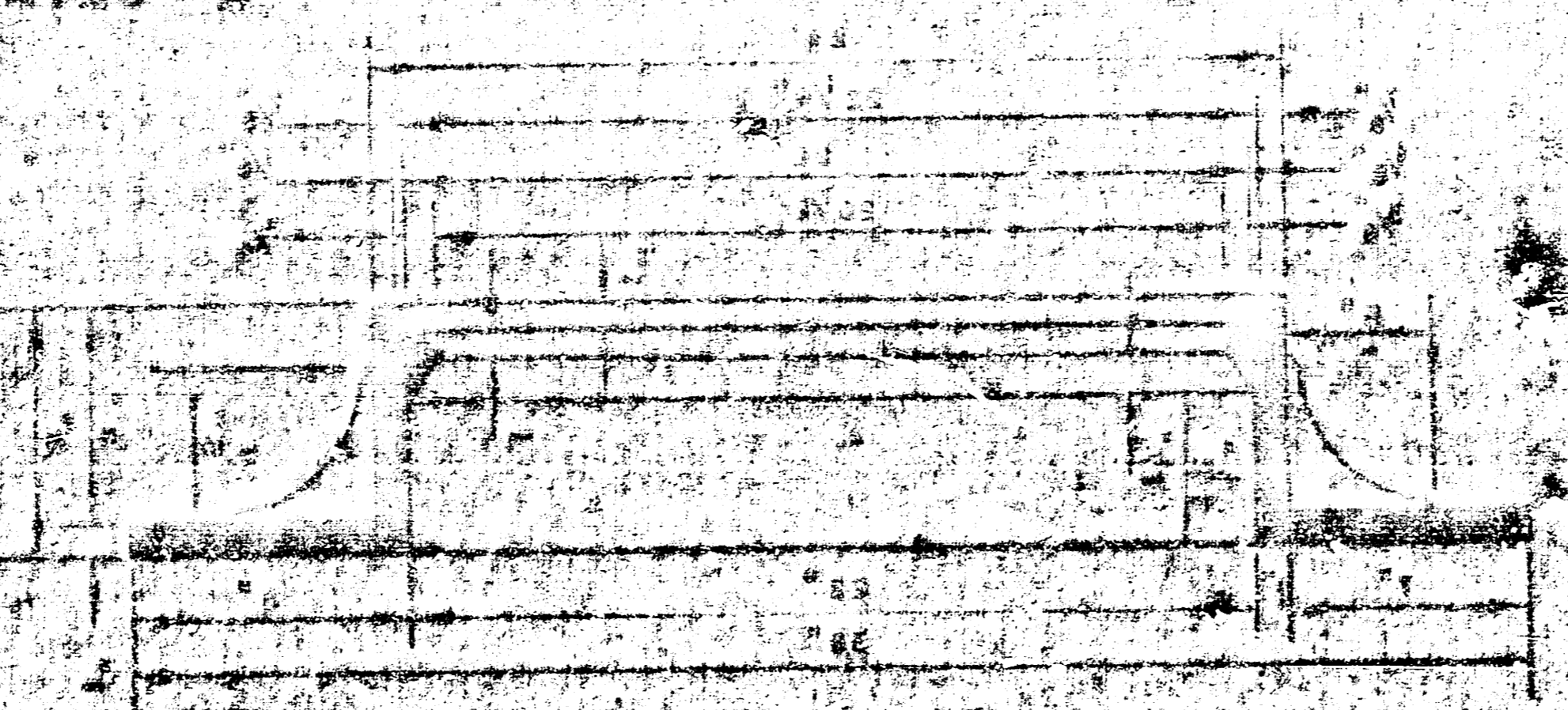


SECTION B-B

MANHOLES
 THE CONCRETE USED FOR MORTAR IN MANHOLES SHALL CONTAIN 8 SACKS OF CEMENT PER CUBIC YARD. STANDARD MANHOLES AND DROP MANHOLES, REGARDLESS OF DIAMETER, SHALL BE BID AT ONE PRICE AS STANDARD MANHOLES. SINGLE OR DOUBLE OUTSIDE DROP MANHOLES SHALL BE BID AT ONE PRICE AS OUTSIDE MANHOLES. ALL MANHOLES WITH BREEZING LARGES



MANHOLE COVER

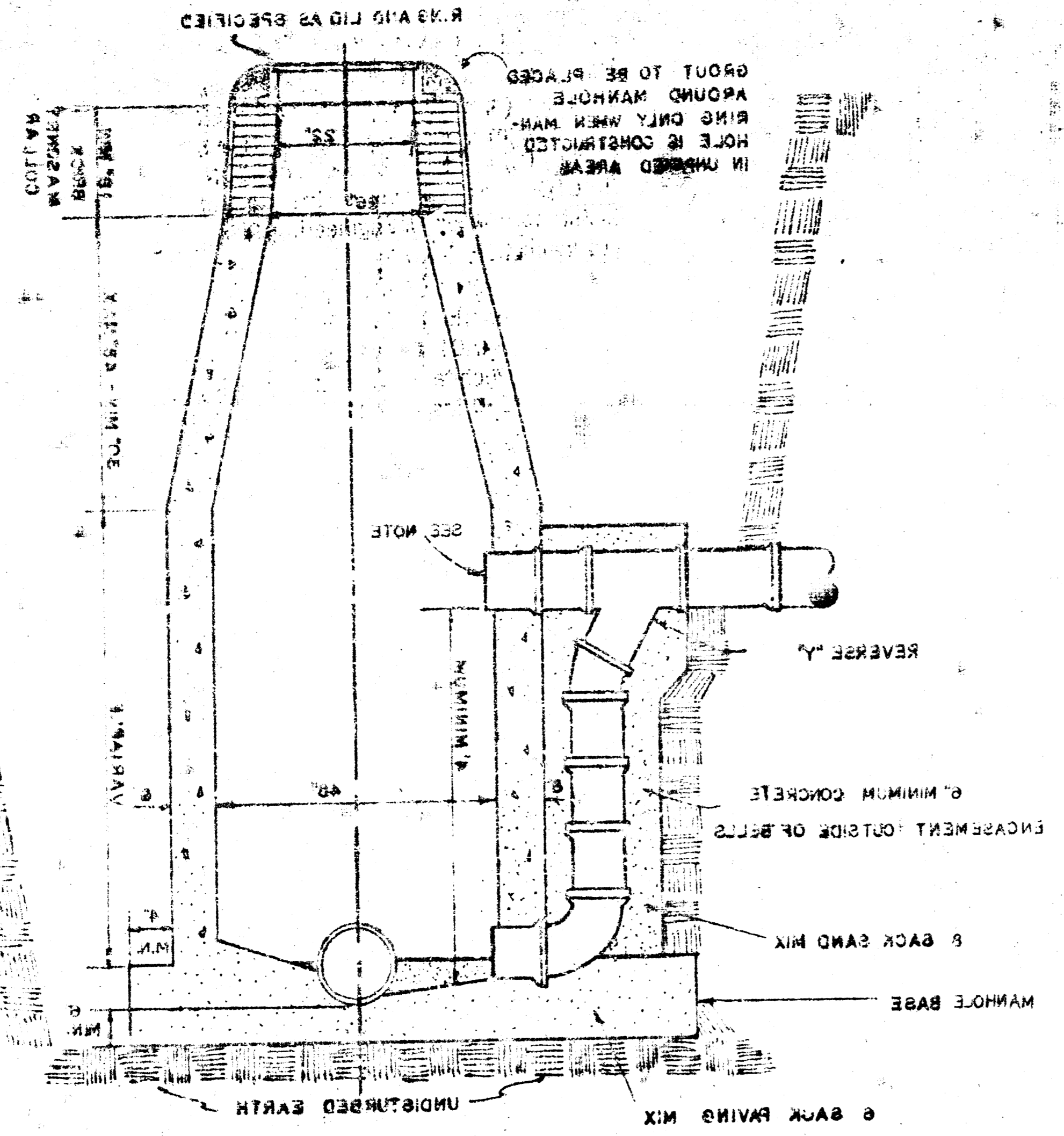


SECTION A-A

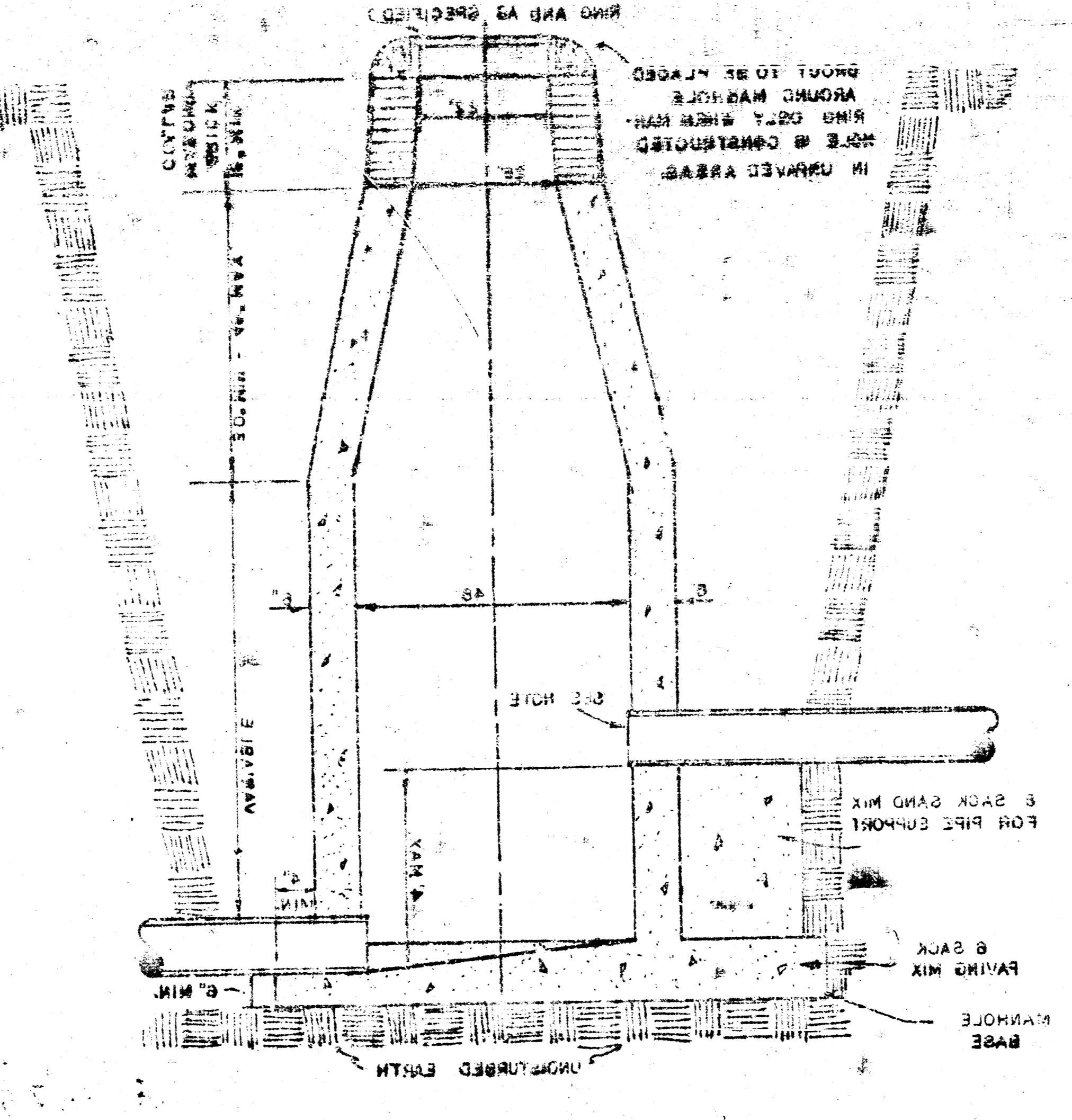
ADAPTED AS STANDARD DESIGN
 SEWER APPURTENANCES
 DETAILS OF

* DRAW = 6' ON 5' DIA. M.H.

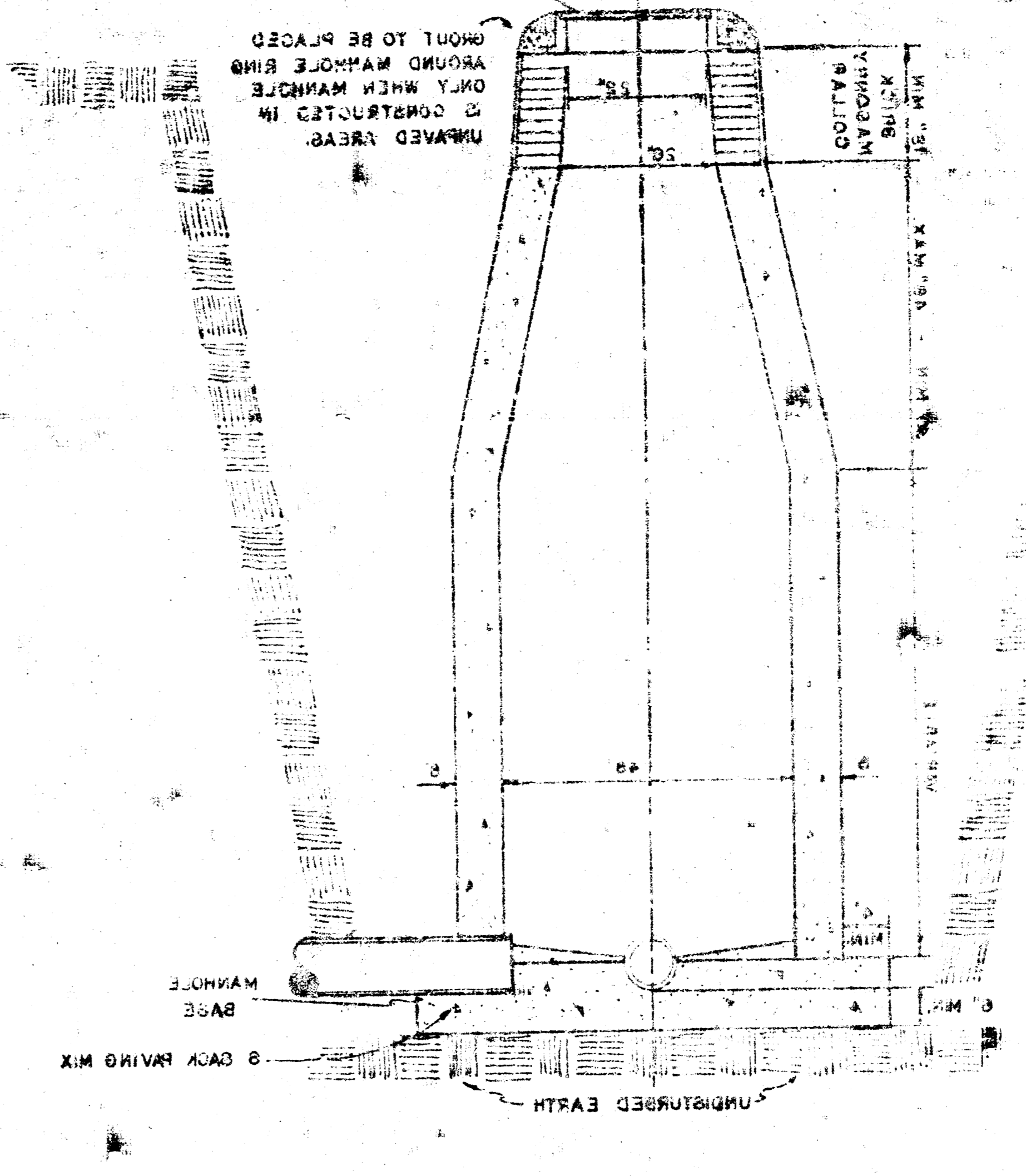
OUTSIDE DROP MANHOLE, TYPE "C"



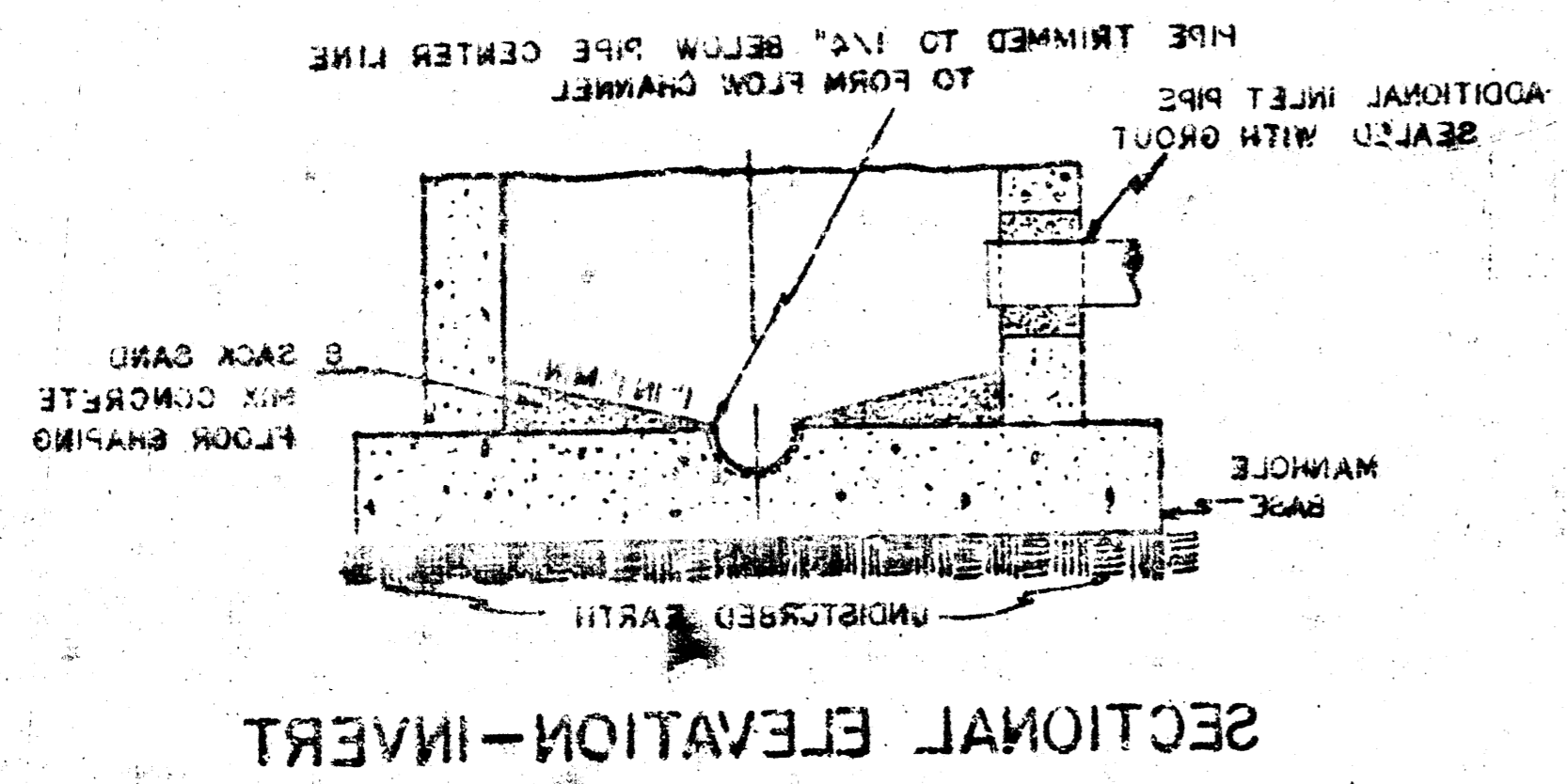
DROP MANHOLE, TYPE "C"



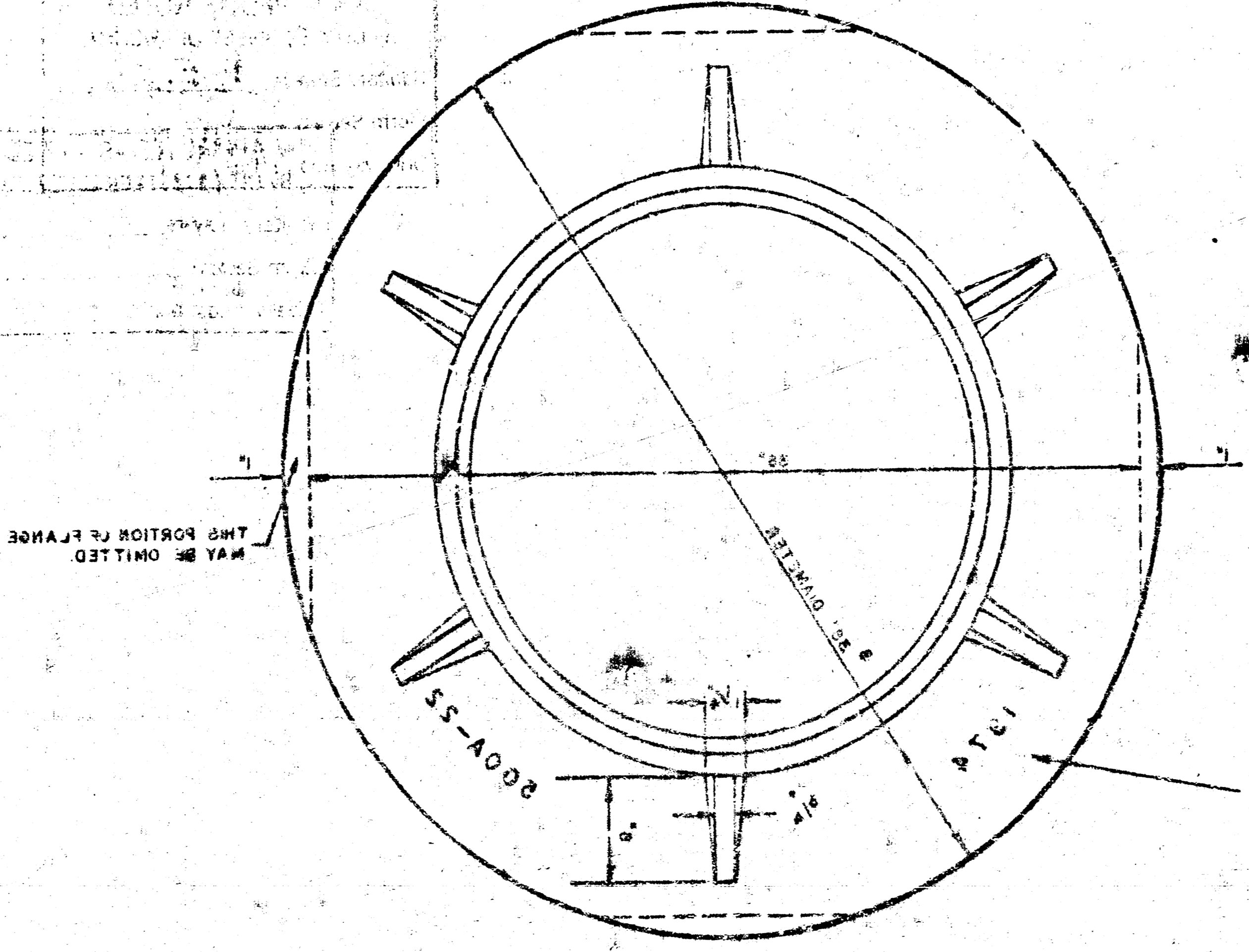
STANDARD MANHOLE, TYPE "C"



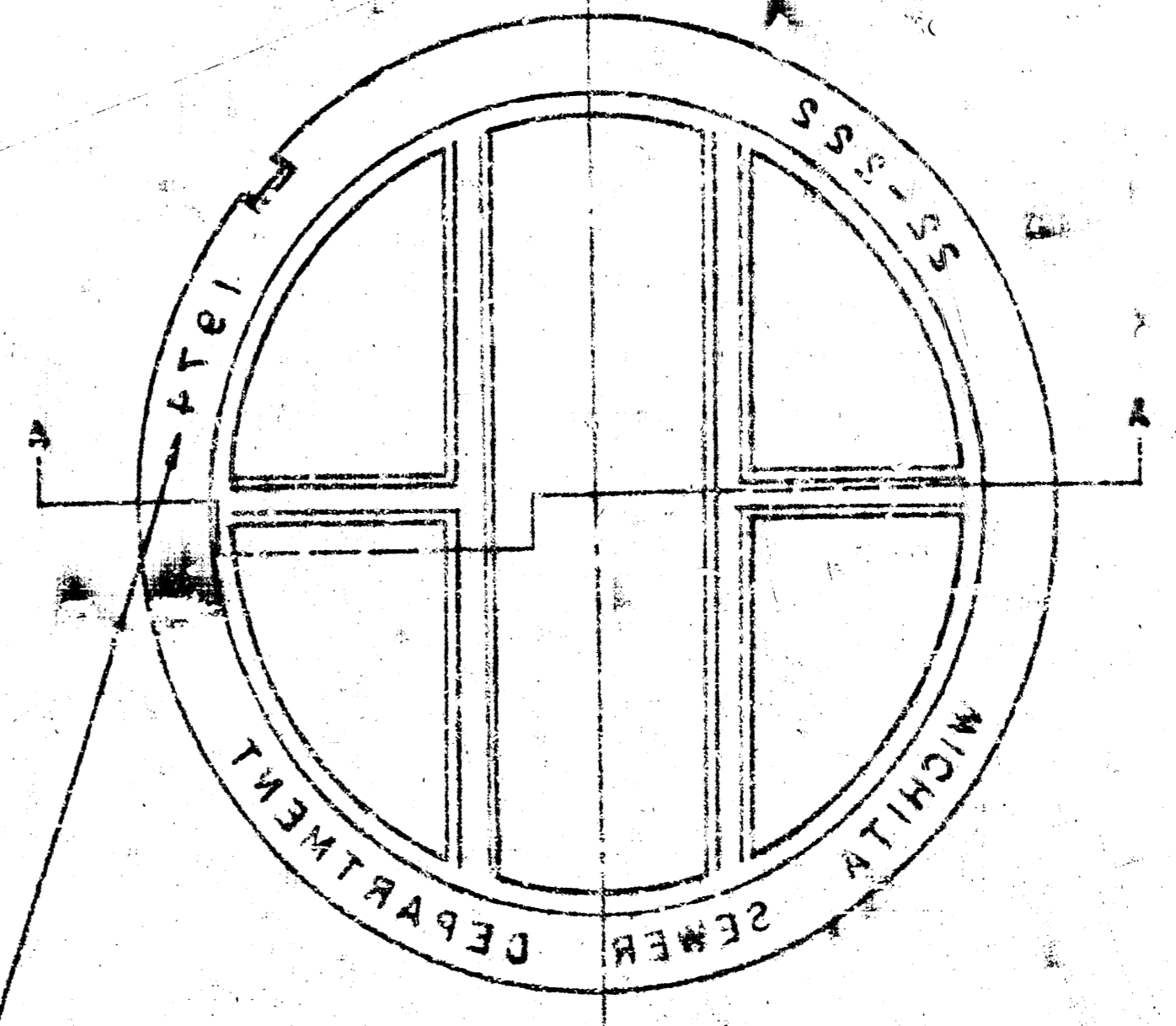
GENERAL NOTES
MORTAR USED IN MASONRY CONSTRUCTION SHALL CONTAIN 8 BAGS OF PORTLAND CEMENT PER CUBIC YARD.
STANDARD MANHOLES TYPE "C" AND STANDARD DROP MANHOLES SHALL BE BID AS STANDARD HOLES FOR THE TYPE AND DIAMETER INDICATED.
OUTSIDE DROP MANHOLES TYPE "C" SHALL BE BID AS STANDARD OUTSIDE DROP MANHOLES FOR THE TYPE AND DIAMETER INDICATED. ALL MANHOLES DIAMETERS WILL BE 4 FT UNLESS INDICATED OTHERWISE. MANHOLES WITH PIPE SIZES LARGER THAN 24" SHALL BE 5 FT DIAMETER.
THE FLOOR OF ALL MANHOLES SHALL BE SHAPED TO INCREASE HYDRAULIC EFFICIENCY USING A SAND MIX CONCRETE.
CAST IN PLACE CIRCULAR CONCRETE MANHOLES ARE TO BE CONSTRUCTED ONLY ON SEWERS NOT SUBJECT TO DETENTION OF CONCRETE DUE TO FORMATION OF HYDROGEN SULFIDE GAS AND IN LOCATIONS WHERE IT IS OBLIVIOUS THAT ANY ADJUSTMENT OF THE MANHOLE TOP ELEVATION WHICH MAY BE NECESSARY WILL REQUIRE MODIFICATION OF THE CONCRETE BARREL.



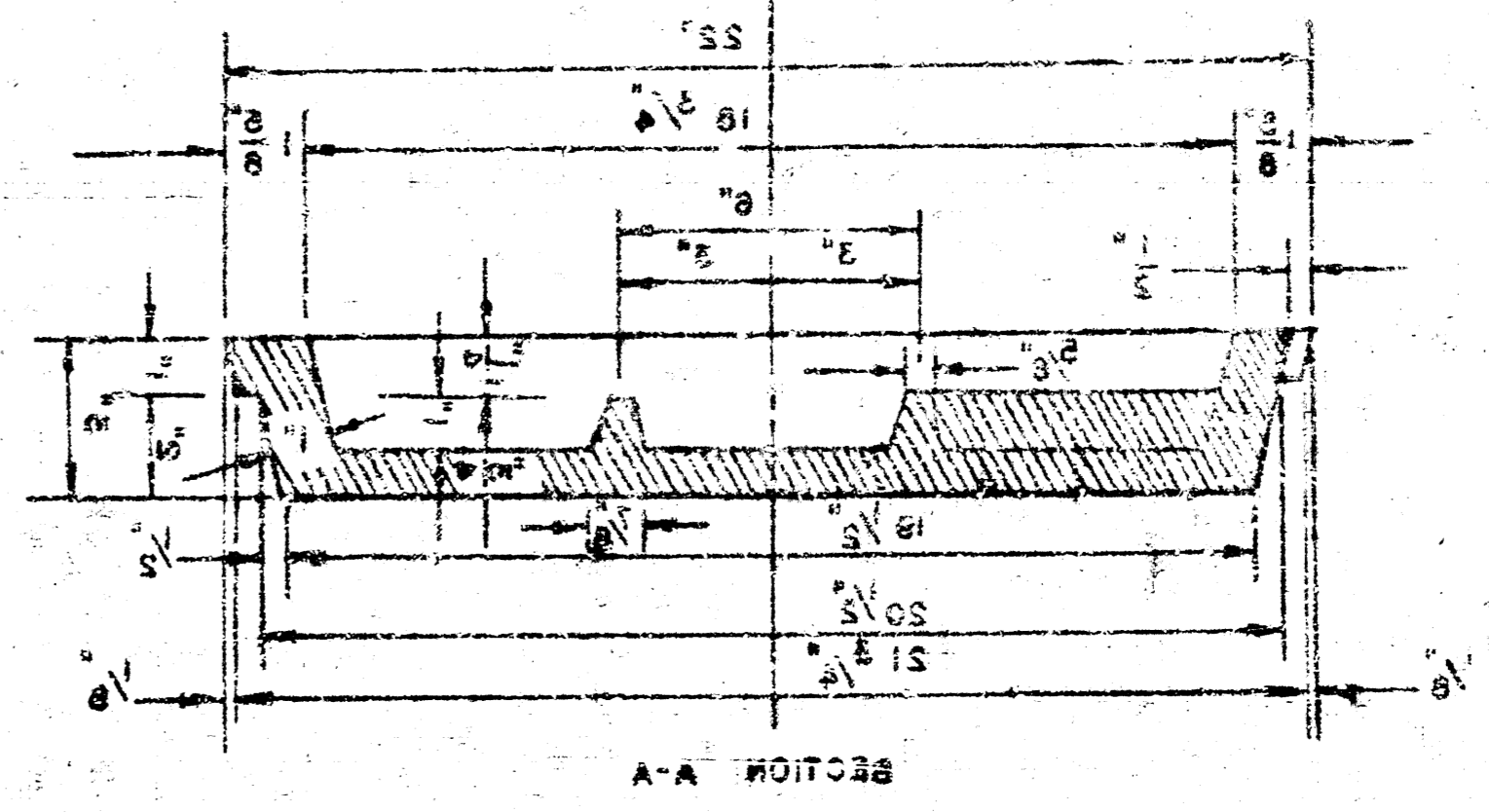
NOTE: OPENING FOR INLET PIPE CUT IN MANHOLE WALL AND PIPE GROUTED IN PLACE WITH NON-SHRINKING GROUT. EXTERIOR OF COMPLETED CONNECTION TO BE SEALED WITH APPROVED COATING.



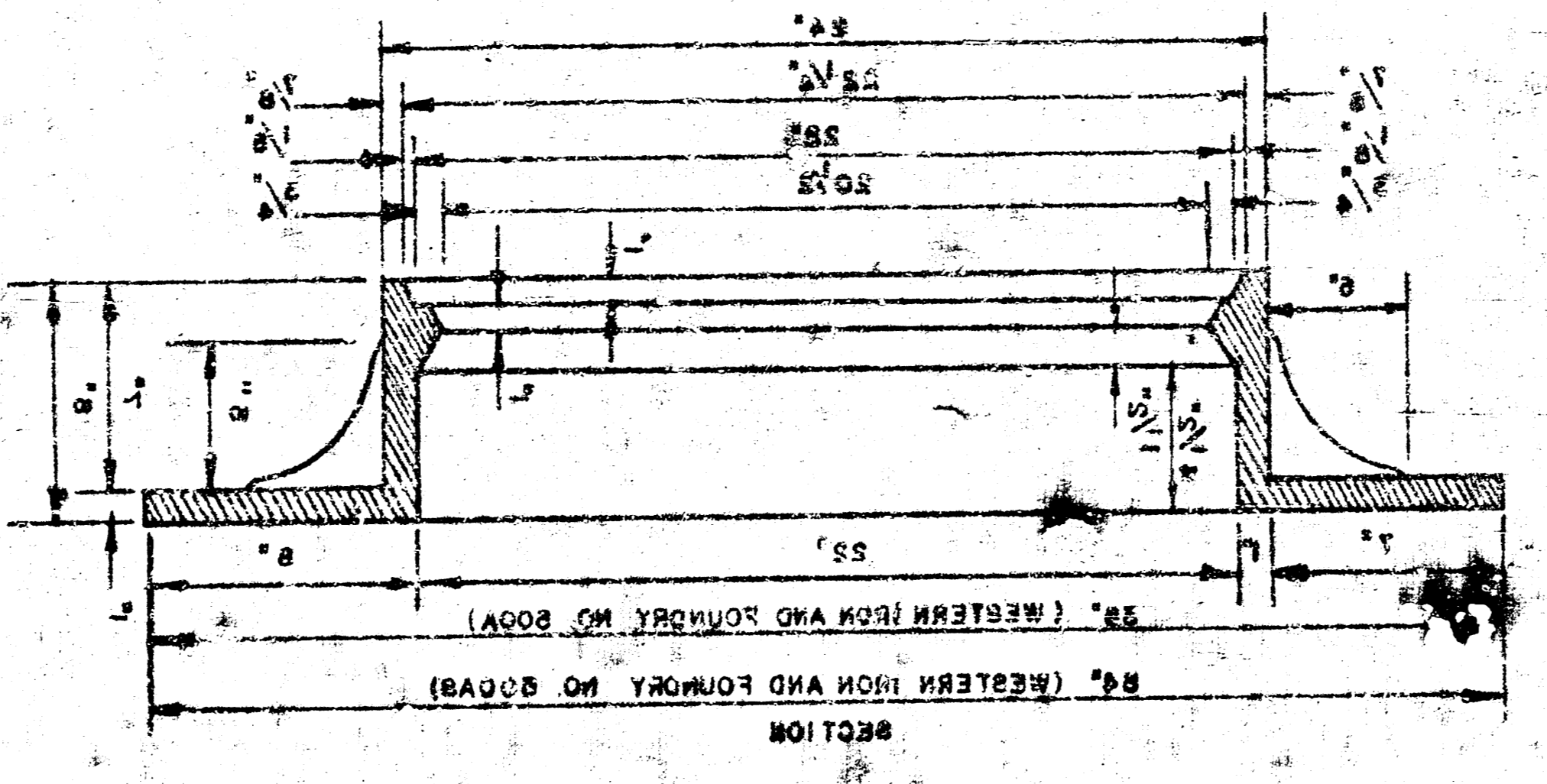
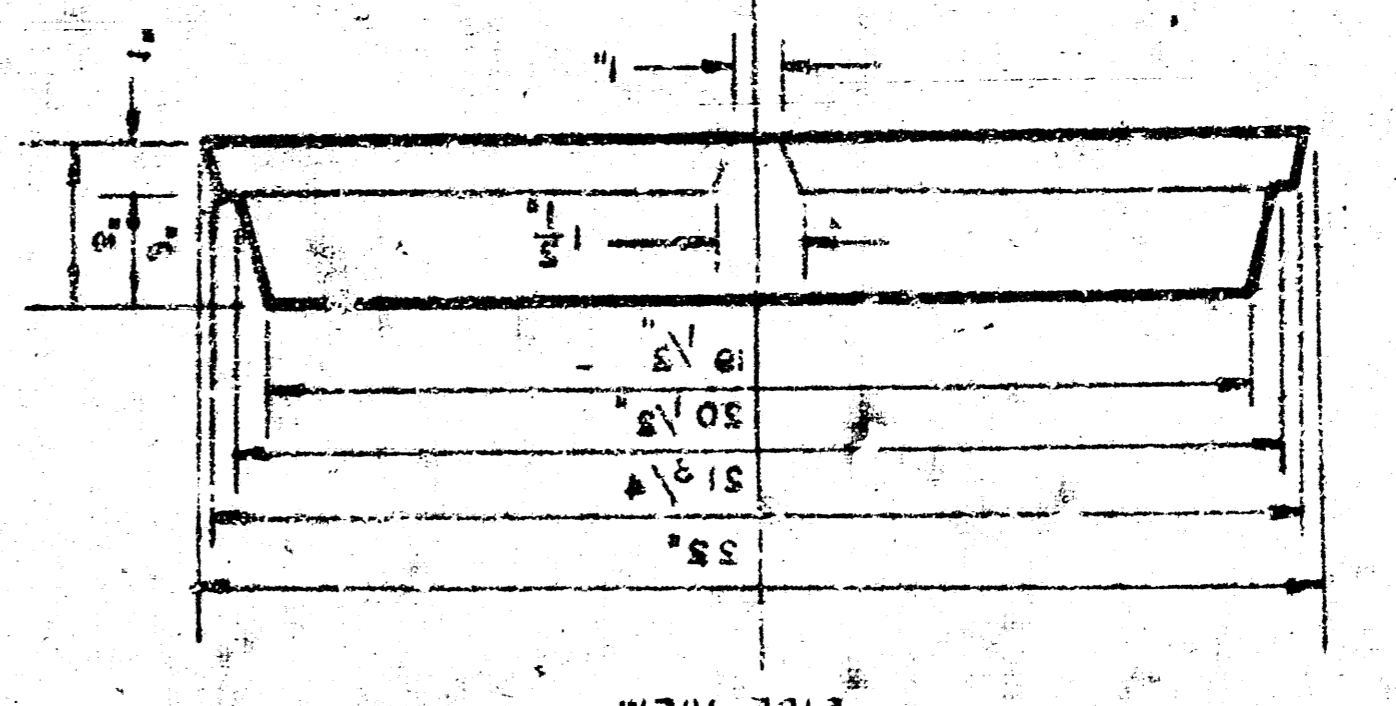
MANHOLE RING
WEIGHT 25 LBS. RING NO. 200A
WEIGHT 20 LBS. RING NO. 200B



MANHOLE COVER
WEIGHT 110 LBS.



MANHOLE COVER



OUTSIDE CIRCUMFERENCE OF COVER AND THE INNER FACE AND SET-UP RING TO BE MACHINED FIT.

YEAR CASTING IS MADE