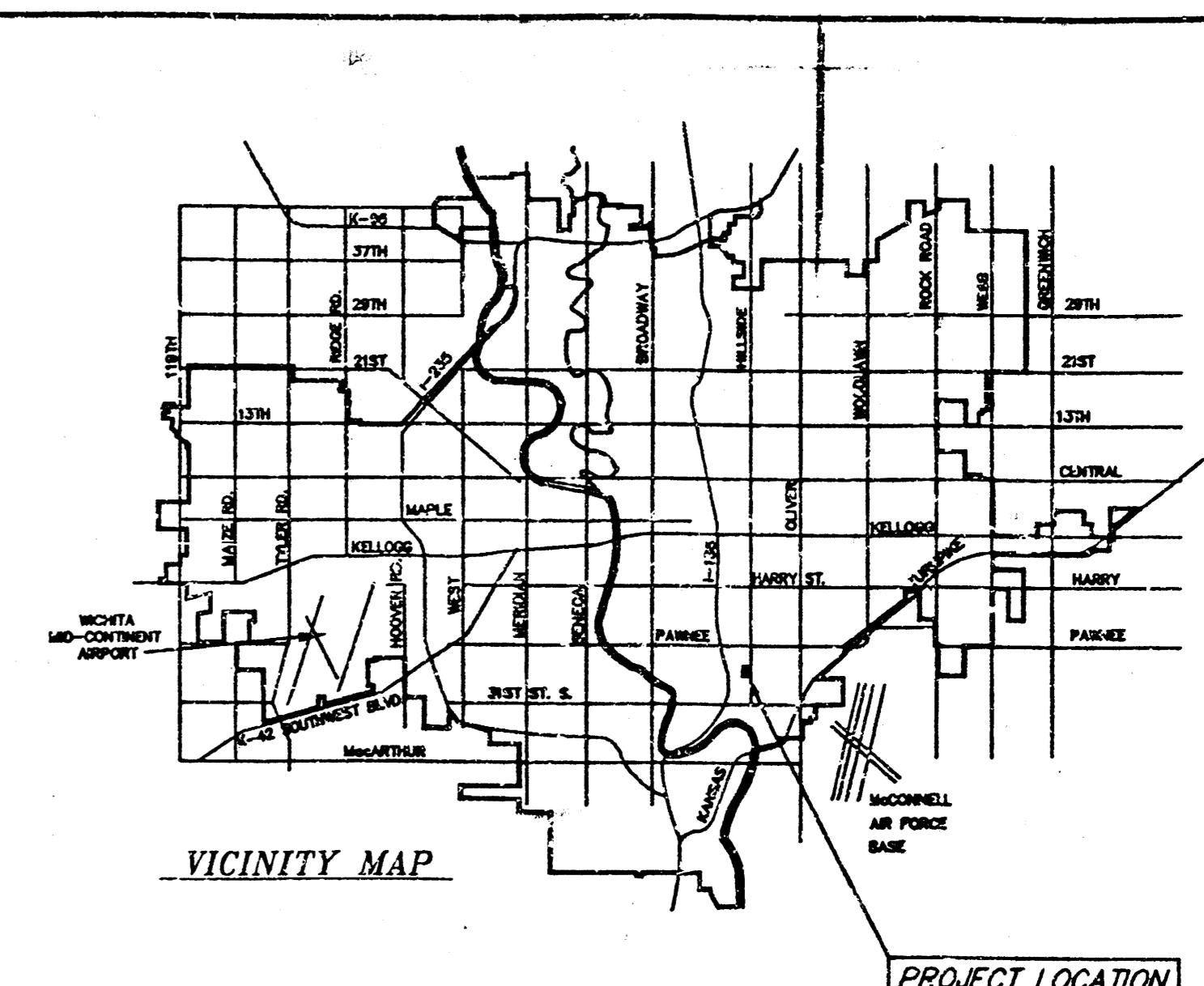
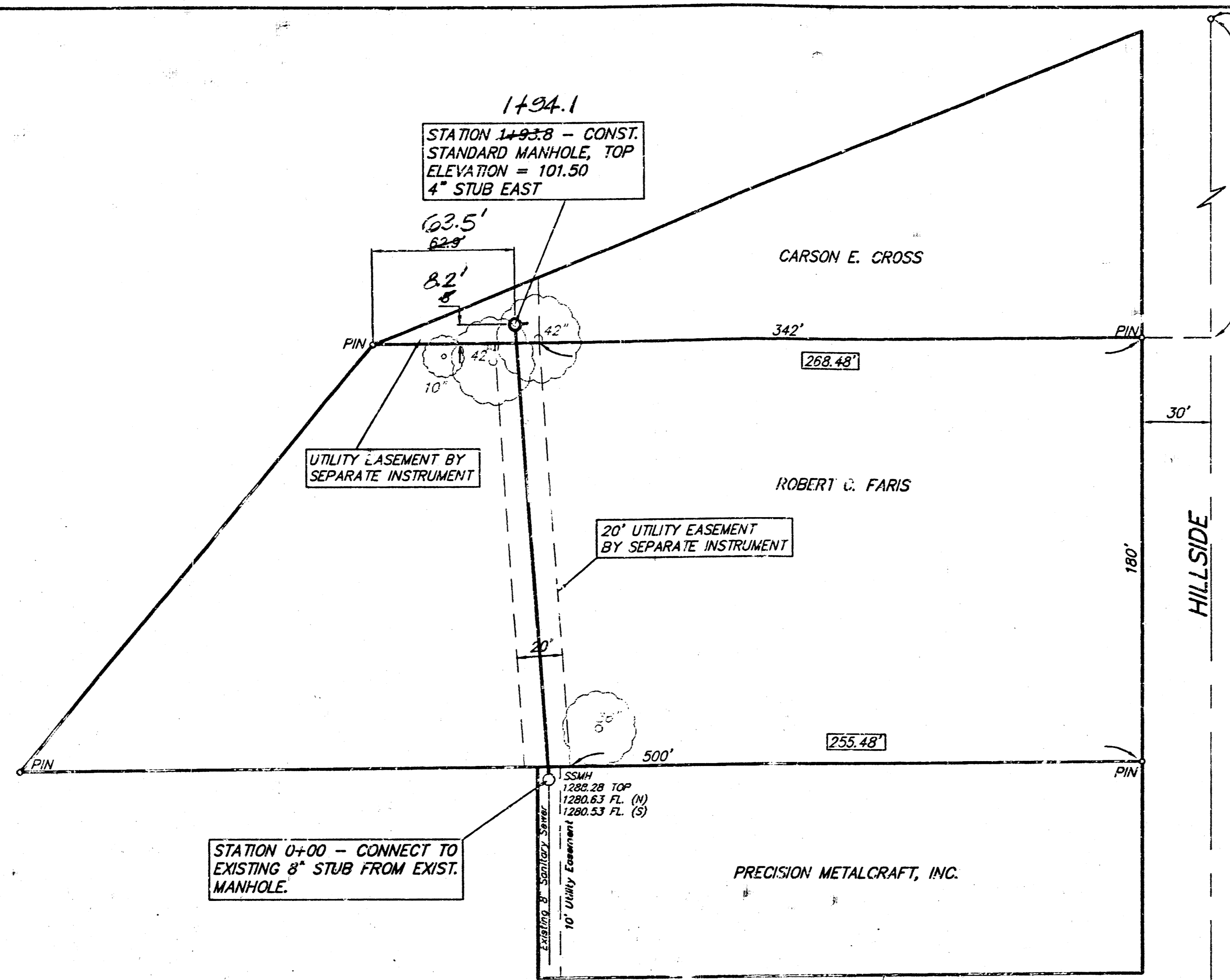


SRB

Scale: 1" = 40' Plan
1" = 5' Profile (Vert.)
o = Iron

BENCH MARK: RAILROAD SPIKE IN EAST FACE OF POWER POLE LOCATED NEAR THE SOUTHEAST CORNER OF CARSON'S BODY SHOP. ELEVATION = 104.25 MSL



NORTHEAST CORNER OF THE SOUTHEAST CORNER OF SECTION 3, TWP. 28-S, RANGE 1 EAST OF THE 6TH P.M.

- GENERAL NOTES**
- Underground utility service lines and overhead utility pole lines are to be adjusted as necessary by others prior to construction unless the plans specifically call for their adjustment by the Contractor or unless the plans specifically identify a utility to be adjusted by its owner during construction. Existing utilities and their location, as shown on the plans, represent the best information obtainable for design. Location information has been obtained from the various utility companies and is either from company record drawings or company provided field locations. The Contractor will be required to work around existing utilities within the right-of-way which do not conflict with proposed construction.
 - The Contractor shall be responsible for preserving property irons. The Contractor will be required to re-establish any property irons which are damaged or destroyed by his construction operations. Such irons shall be re-established by a licensed land surveyor or a licensed professional engineer in accordance with state laws.
 - The Contractor shall contact Kansas One Call at 687-2470 to have underground utilities located prior to construction of this project.
 - The Contractor shall seed, fertilize and mulch all disturbed areas.

INSPECTION AND TESTING FOR THIS PROJECT TO BE PROVIDED BY A LICENSED CONSULTING ENGINEERING FIRM UNDER CONTRACT WITH THE OWNER/DEVELOPER. SAID INSPECTION TO BE IN ACCORDANCE WITH THE CITY OF WICHITA STANDARD CONSTRUCTION ENGINEERING PRACTICES AND SPECIFIED BY A LICENSED PROFESSIONAL ENGINEER. NO WORK SHALL BE PERFORMED IN DESIGNATED EASEMENTS OR PUBLIC RIGHT-OF-WAY BY THE CONTRACTOR WITHOUT SUCH INSPECTIONS. NO WORK SHALL BE COMMENCED IN DESIGNATED EASEMENTS OR PUBLIC RIGHT-OF-WAY WITHOUT WRITTEN AUTHORIZATION BY THE CITY ENGINEER.

APPROVED AS NOTED
By CITY ENGINEER OF WICHITA

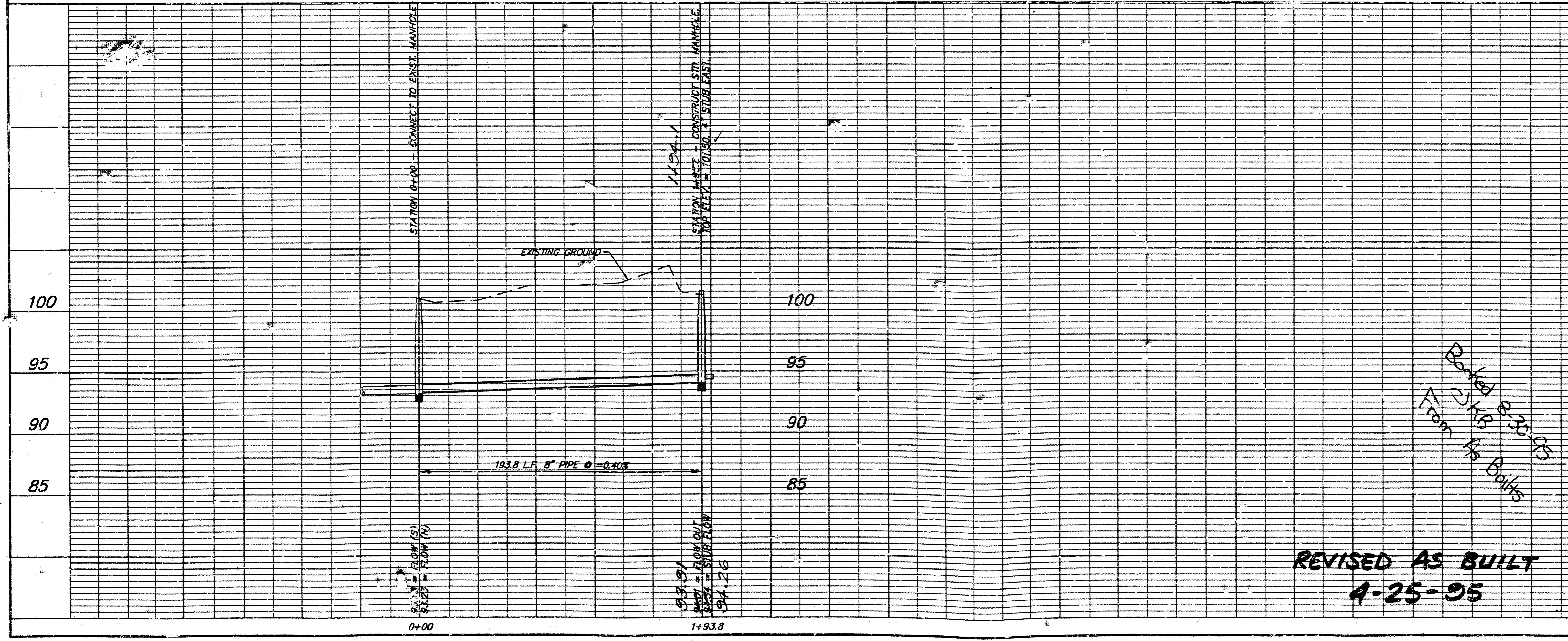
Sanitary Sewers VRH 8/23/94

Storm Sewers _____

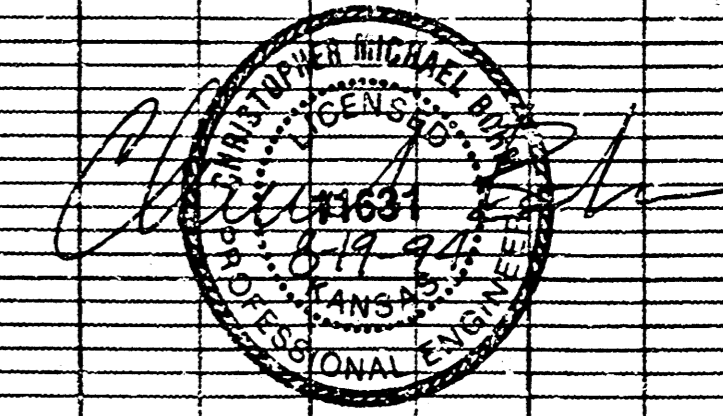
Driveway Approaches _____

Water Mains _____

Paving _____



Revised 8-30-95
From 2/18/95



REVISED AS BUILT
4-25-95

PRIVATE SANITARY SEWER EXTENSION
SERVING LIVING WORD OUTREACH, INC.
WICHITA, KANSAS

SRB 924 NORTH MAIN 316-264-8008
WICHITA, KANSAS 67211 FAX 264-4621

SAVOY, RUGGLES & BOHM, P.A.
ENGINEERING & SURVEYING

PROJECT NUMBER
476PPS (607861)

DRAWN	DESIGN	REVIEW	DATE	UTILITY	SRB JOB
C. Bohm	C. Bohm		7-15-1994		166E

DATE PLOTTED: 7/26/95

1

1