

PLANS

FOR

UTILITY CONSTRUCTION

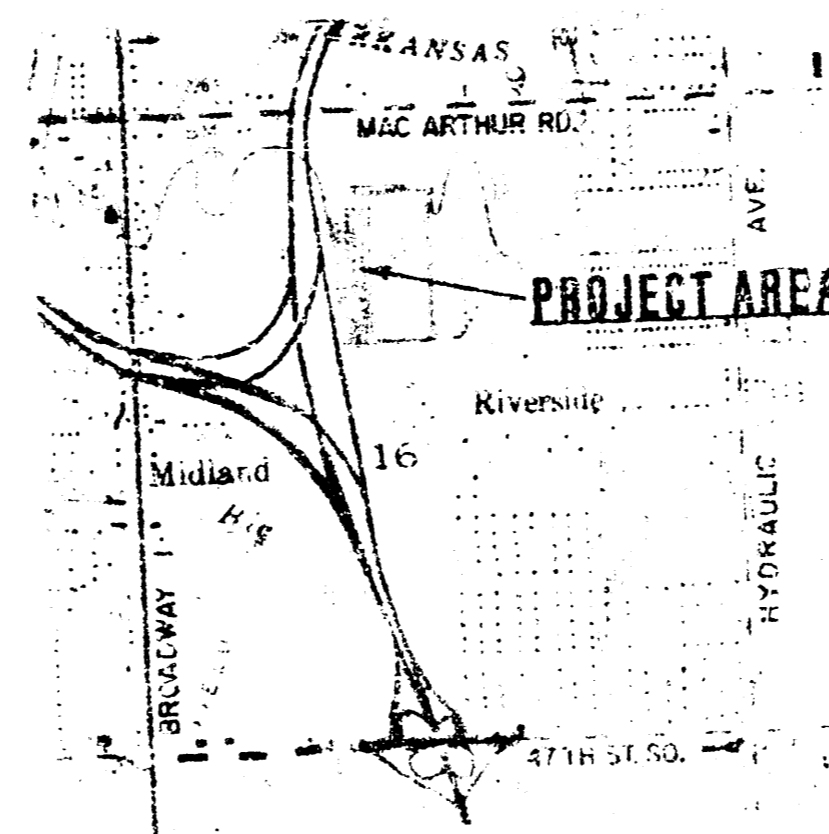
LAKEVIEW MOBILE HOME PARK THIRD ADDITION

1984

CITY OF WICHITA PROJECT NUMBER: 468-76-245-80000-000-000-008

INDEX OF SHEETS

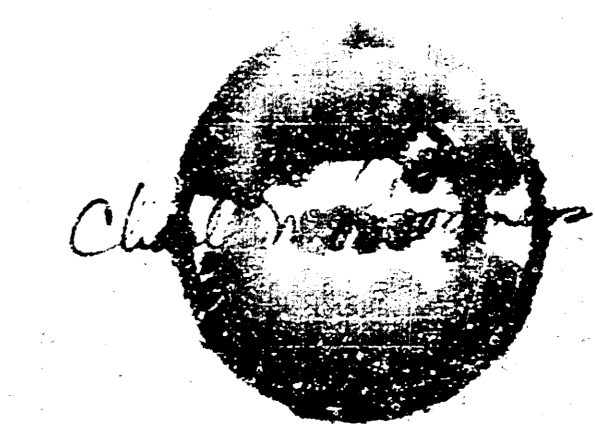
- 1. TITLE SHEET
- 2. WATER LINE EXTENSIONS
- 3-6 SANITARY SEWER EXTENSIONS
- 7-8 GAS LINE EXTENSIONS
- 9. ELECTRIC EXTENSIONS
- 10. UTILITY MAP



APPROVED AS NOTED
 By CITY ENGINEER OF WICHITA
 Sanitary Sewers *CVB 9/24/84*
 Storm Sewers _____
 Driveway Approaches _____

NOTE TO CONTRACTOR
 This project shall be constructed under the supervision of the CITY ENGINEER and conforming to the SPECIFICATIONS of the CITY OF WICHITA. The CONTRACTOR shall pay the City of Wichita for all costs of inspection.

BM
 TOP OF CURB, EAST SIDE OF ALFALFA STREET - END OF EXIST CURB & GUTTER.
 ELEV. 1377 U.S.G.S.

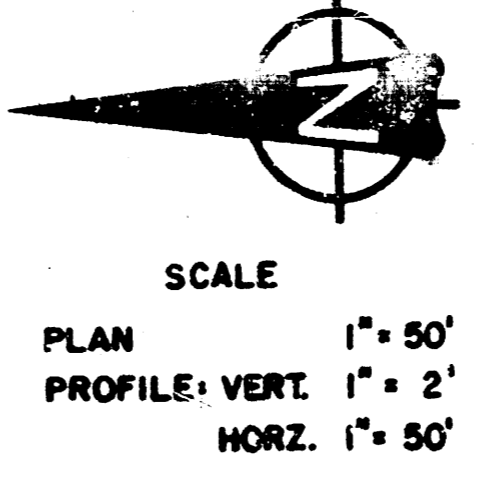
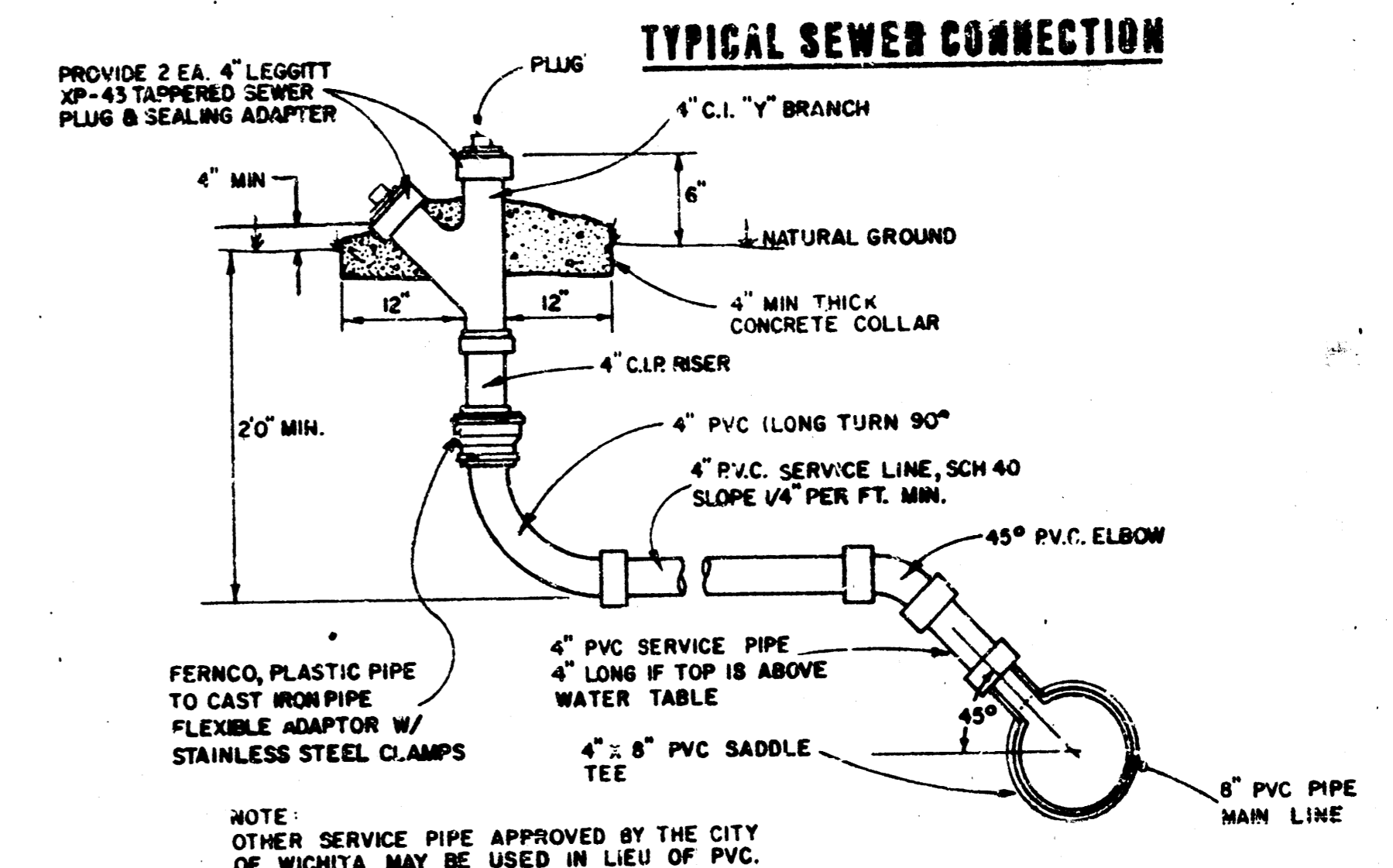
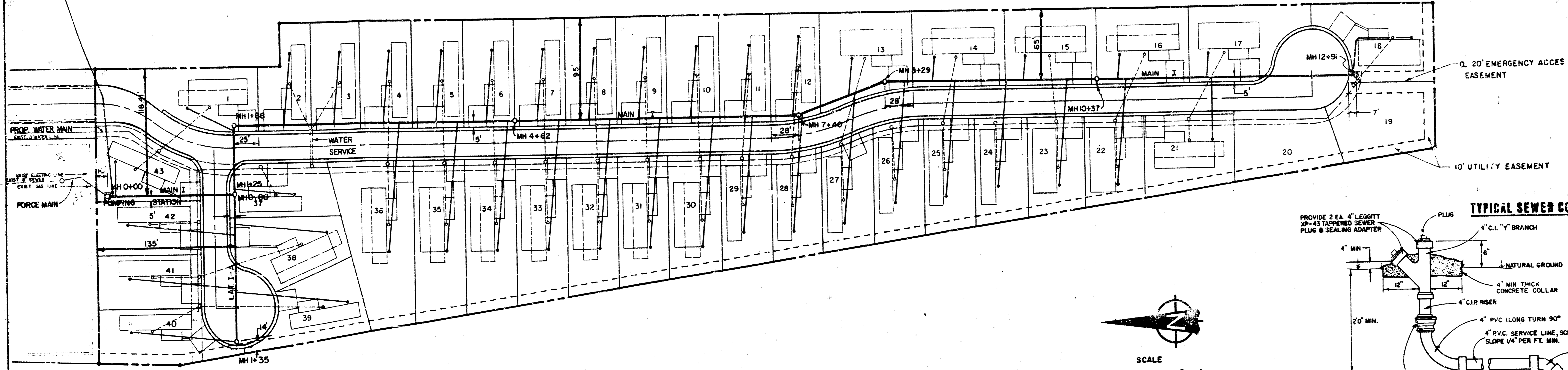


CHARLES J. ...
 PROFESSIONAL ENGINEER
 STATE OF KANSAS
 No. 484
 DATE 9-12-84 SHEET 1 OF 10

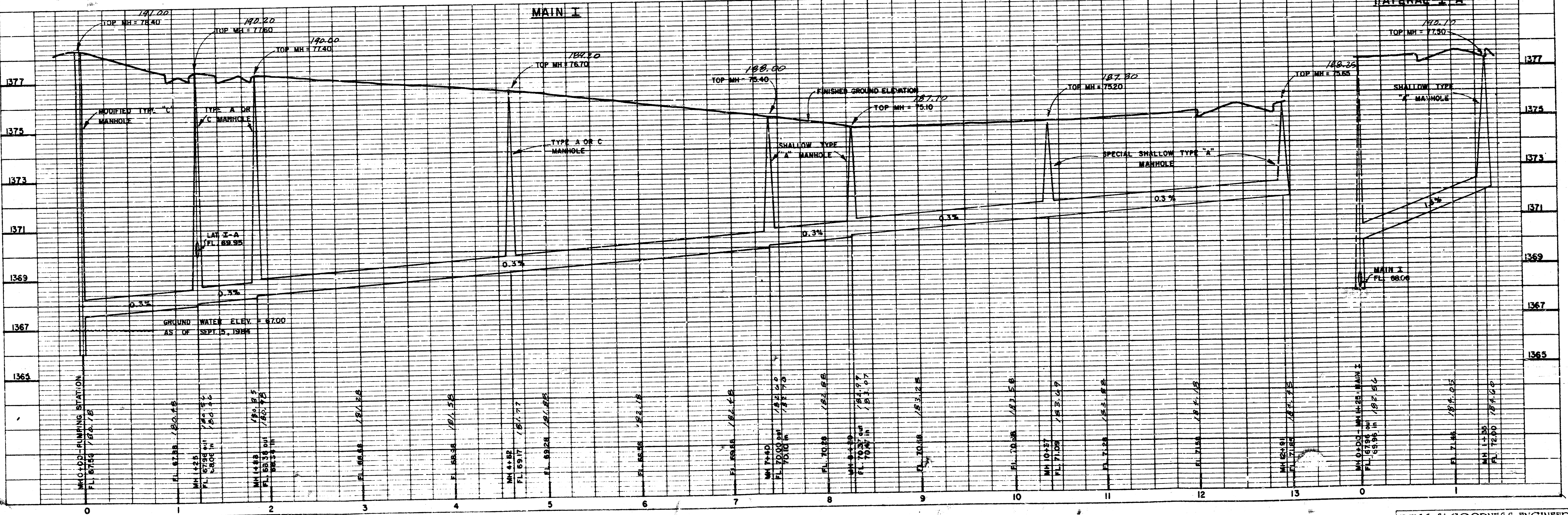
SANITARY SEWER EXTENSIONS

FILMED FROM THE BEST AVAILABLE COPY

INSTALL MAIN LINE TRAP ON 8" PVC LINE BETWEEN PUMPING STATION AND FIRST SERVICE CONNECTION TO MOBILE HOME.
SEE DETAIL SHEET 4 OF 10.



ALL PIPE IS 8" PVC SEWER PIPE



DEISS & GOODNESS ENGINEERS
2100 WEST 21ST STREET
WICHITA, KANSAS 67203
(316) 832-0225

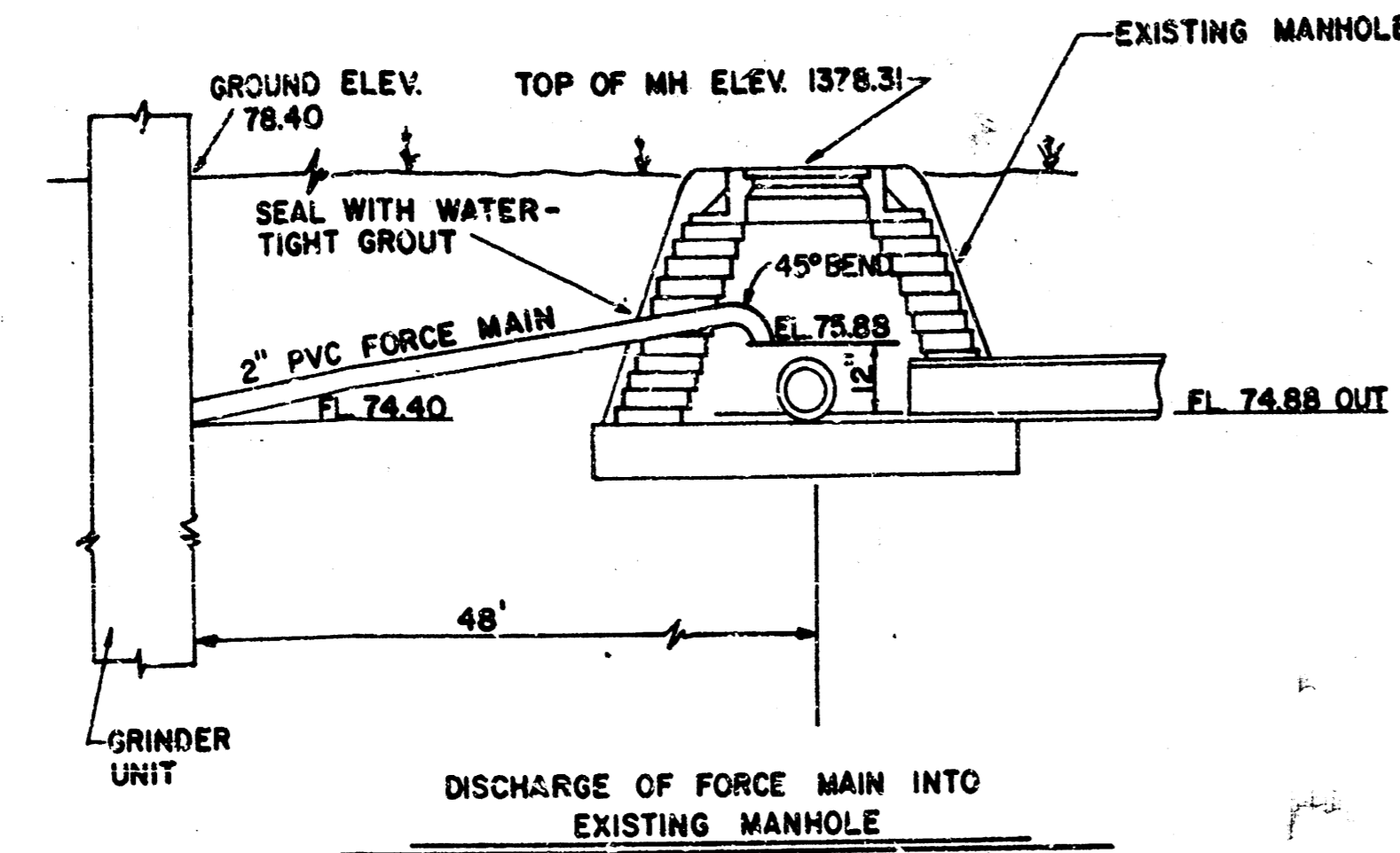
REVISION	DRAWN BY	CHECKED BY	DESIGNED BY	PROJECT

SANITARY SEWER SYSTEM EXTENSIONS

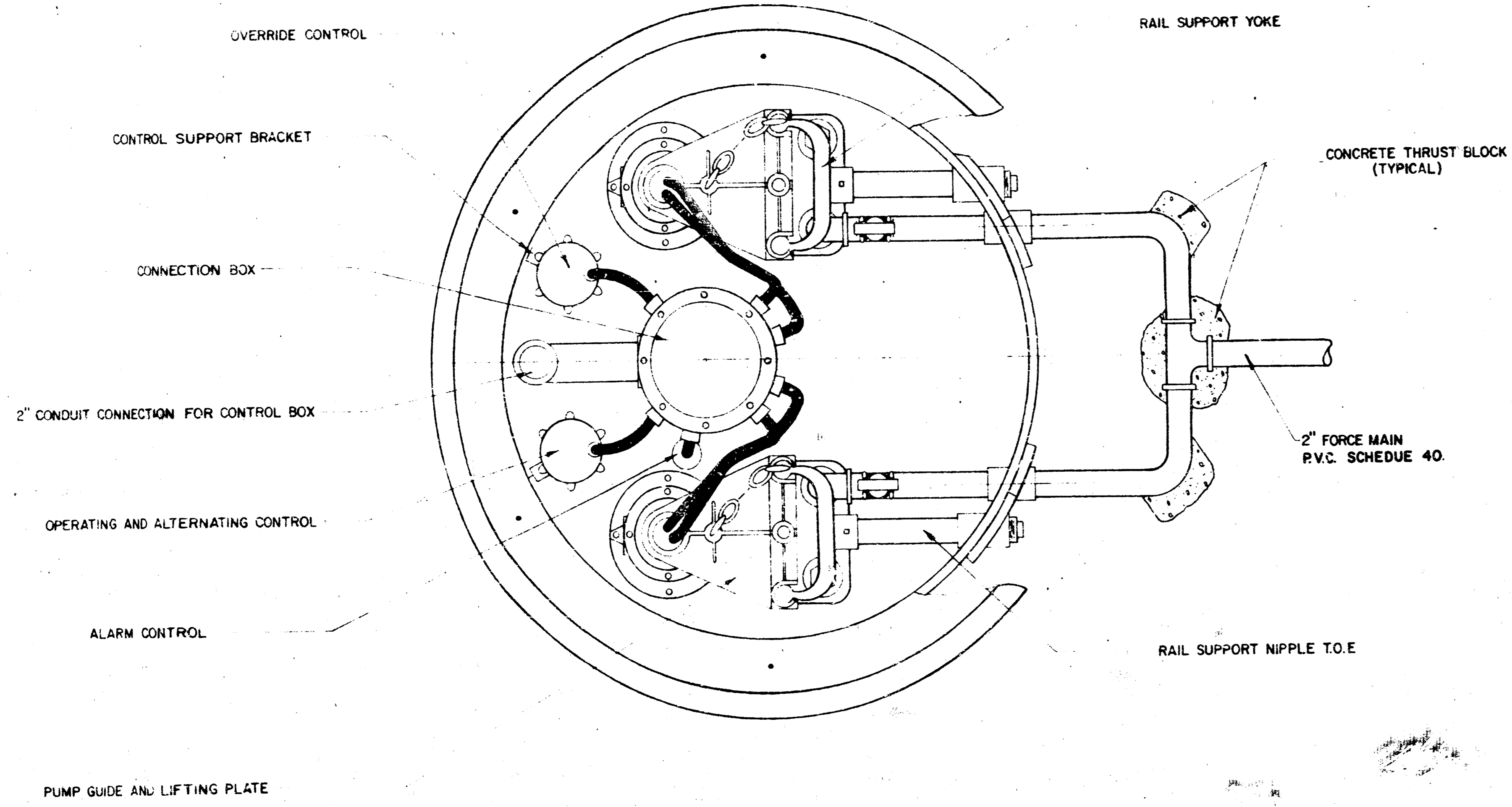
CUSTOMER **LAKEVIEW MOBILE HOME PARK THIRD ADDITION**

SCALE GIVEN
DATE 9-12-84
PROJECT NO. 84-01
SHEET 2 OF 2

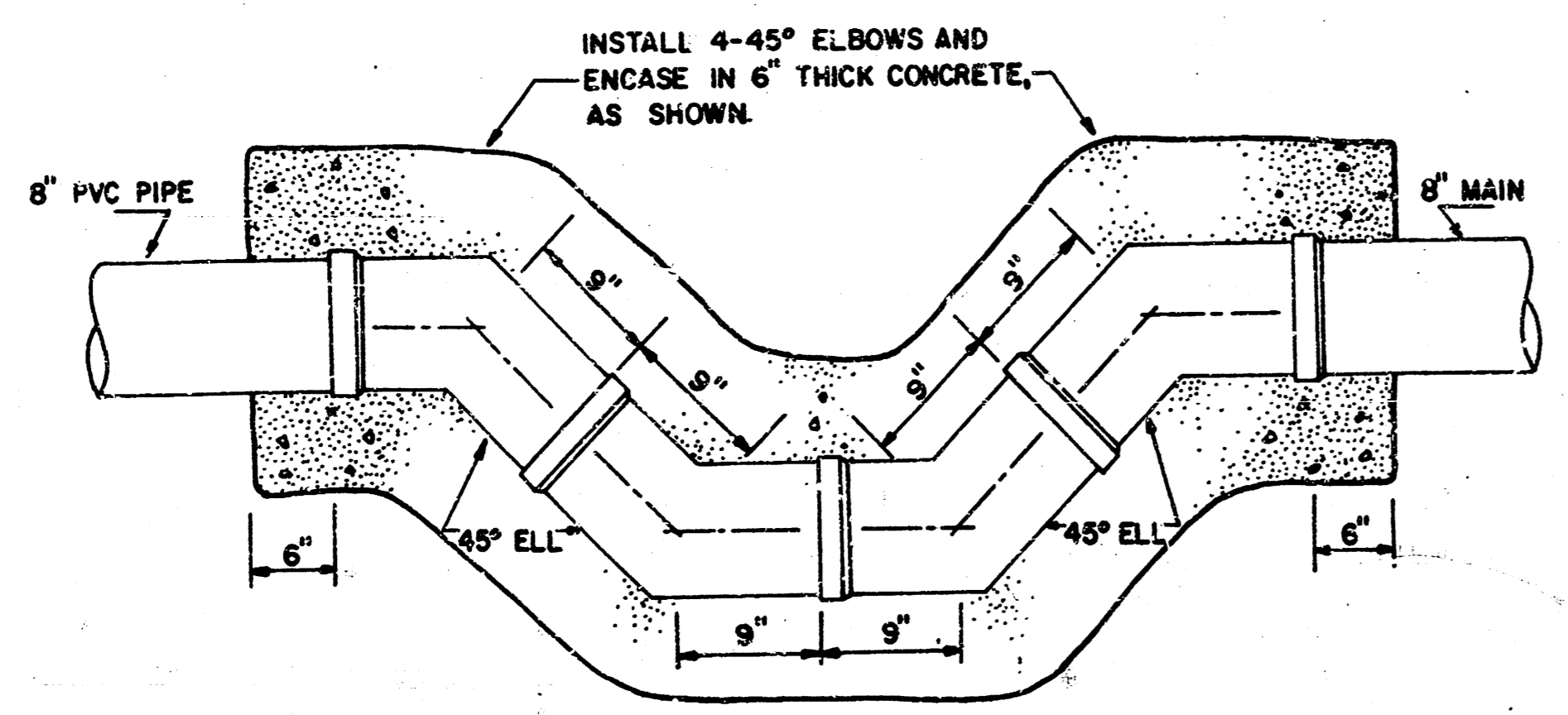
FILMED FROM THE BEST AVAILABLE COPY



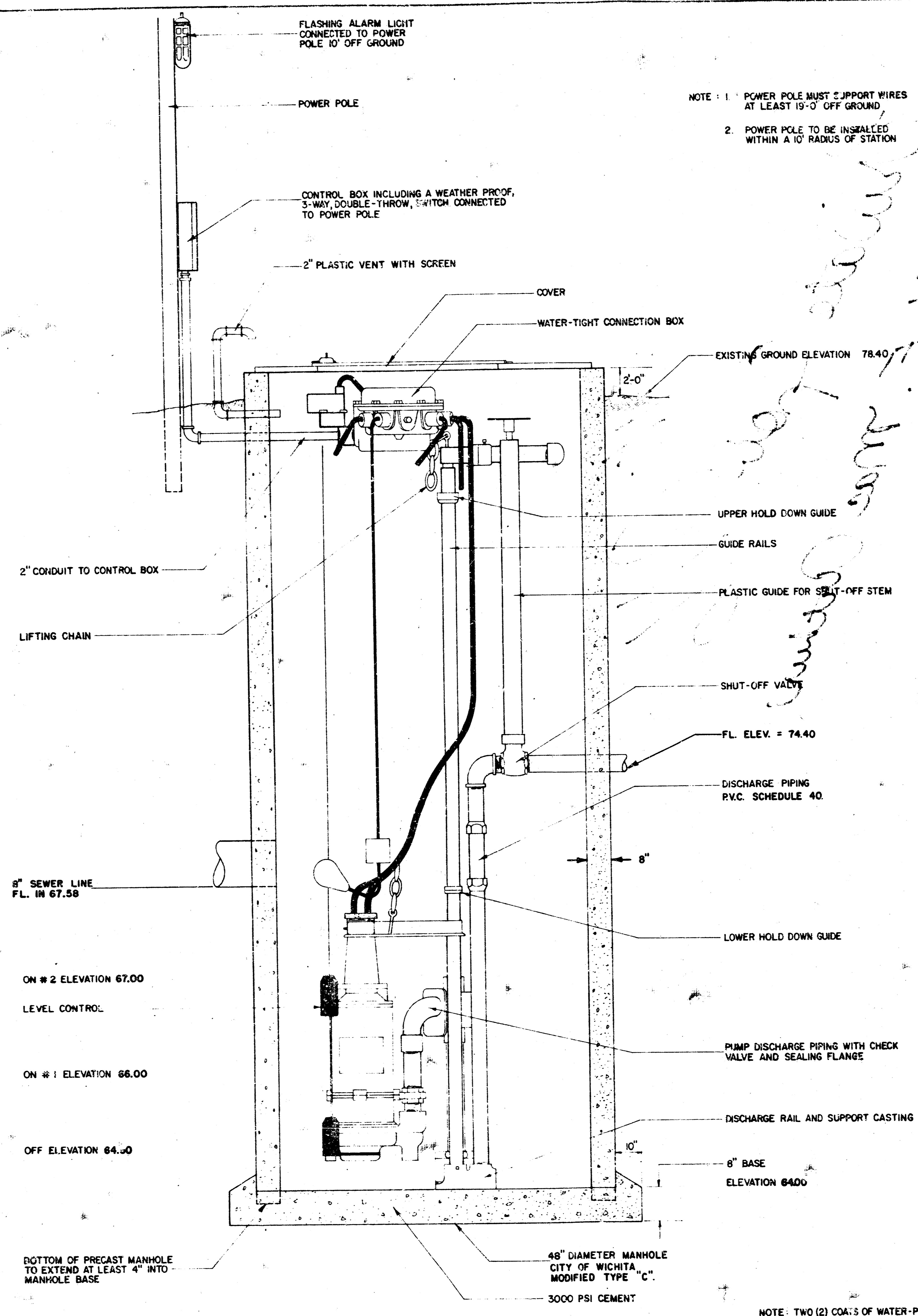
DISCHARGE OF FORCE MAIN INTO EXISTING MANHOLE



NOTE: THESE DRAWINGS SHOWS DETAILS OF THE MEYERS GRINDER PUMP BUT IT IS NOT INTENDED TO ELIMINATE OTHER MANUFACTURERS. OTHER PUMPS MEETING SPECIFICATIONS MAY BE SUBMITTED FOR APPROVAL.



MAIN LINE TRAP DETAIL



NOTE: 1. POWER POLE MUST SUPPORT WIRES AT LEAST 19'-0\"/>

2. POWER POLE TO BE INSTALLED WITHIN A 10' RADIUS OF STATION

DUPLEX GRINDER UNIT ON RAILS
NO SCALE

NOTE: TWO (2) COATS OF WATER-PROOFING ASPHALT SHALL BE APPLIED TO THE OUTSIDE OF THE STATION. WATER-PROOFING ASPHALT SHALL CONFORM TO THE REQUIREMENTS OF "STANDARD SPECIFICATIONS FOR ASPHALT DAMP-PROOFING AND WATER-PROOFING" A.A.S.H.O. DESIGNATION M115, TYPE B OR AS APPROVED BY THE ENGINEER.

DESS & GOODNESS ENGINEERS
GRINDER PUMP
2100 WEST 21ST STREET
WICHITA, KANSAS 67204
(316) 832-0253