

3/11/2008 City of Wichita
Project No. 488-76-245-80000-000-008

OLIVER

Scale:
Plan: 1" = 50'
Profile: 1" = 10'

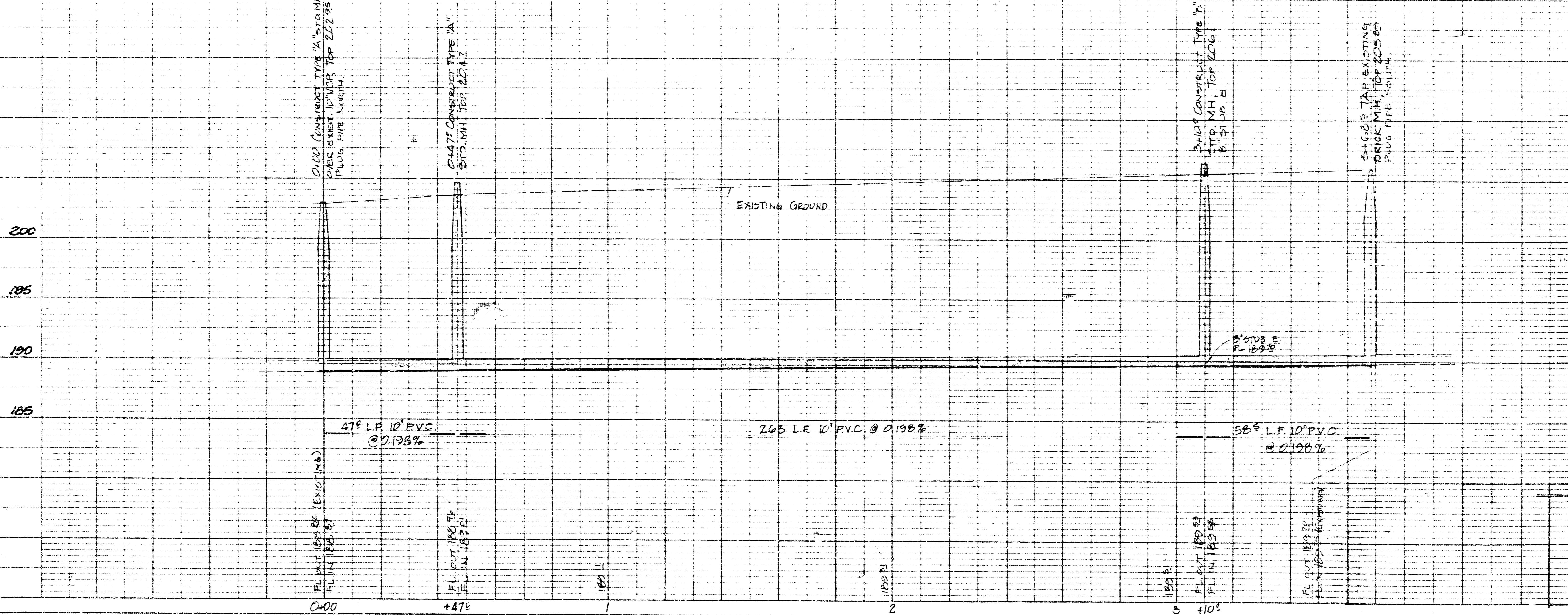
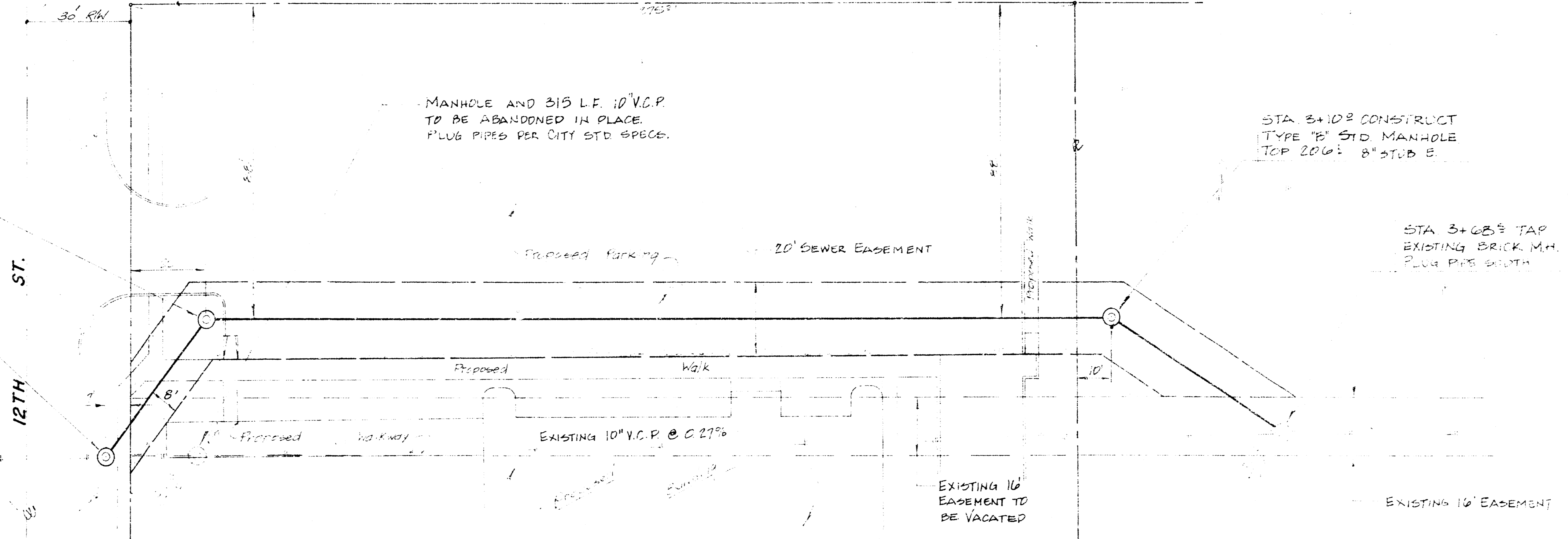
STA. 0+47⁸ CONSTRUCT
TYPE 'A' STD MANHOLE
TOP 202.42

STA. 0+00 CONSTRUCT
TYPE 'A' STD MANHOLE
OVER EXISTING 10" V.C.P.
TOP 202.42. PLUG PIPE N.

MANHOLE AND 315 LF. 10" V.C.P.
TO BE ABANDONED IN PLACE.
PLUG PIPES PER CITY STD. SPECS.

STA. 3+10² CONSTRUCT
TYPE 'B' STD MANHOLE
TOP 206.8. 8" STUB E.

STA. 3+05² TAP
EXISTING BRICK M.H.
PLUG PIPE SOUTH



APPROVED AS NOTED
BY CITY ENGINEER WICHITA

WICHITA
This project was prepared under
the supervision of the City Engineer
and the approval of the City Council.

SANITARY SEWER RELOCATION FOR FOURTH
ADDITION TO LAMBDALE
CITY OF WICHITA, KANSAS
PROJ. NO. 488-76-245-80000-000-008
BAUGHMAN COMPANY, P.A.
SURVEYING & ENGINEERING
314/231-7211 | 314/231-7212 | WICHITA, KANSAS 67211

PLATE 1 PLAN PROFILE 1 A S
DRAWING NUMBER 245 80000 000 008
NO. 10000

14 1 1 1

FILMED FROM THE BEST
AVAILABLE COPY....