

Sta. 3+20 Const. 7 x 7 Conc. Manhole with temporary drain opening. Brick extension Install 24" x 34" S.S. (R.C.P.) S.

Sta. 10+00 Const. 7 x 7 Conc. Manhole with temporary drain opening. Brick extension Install 24" x 34" S.S. (R.C.P.) E.

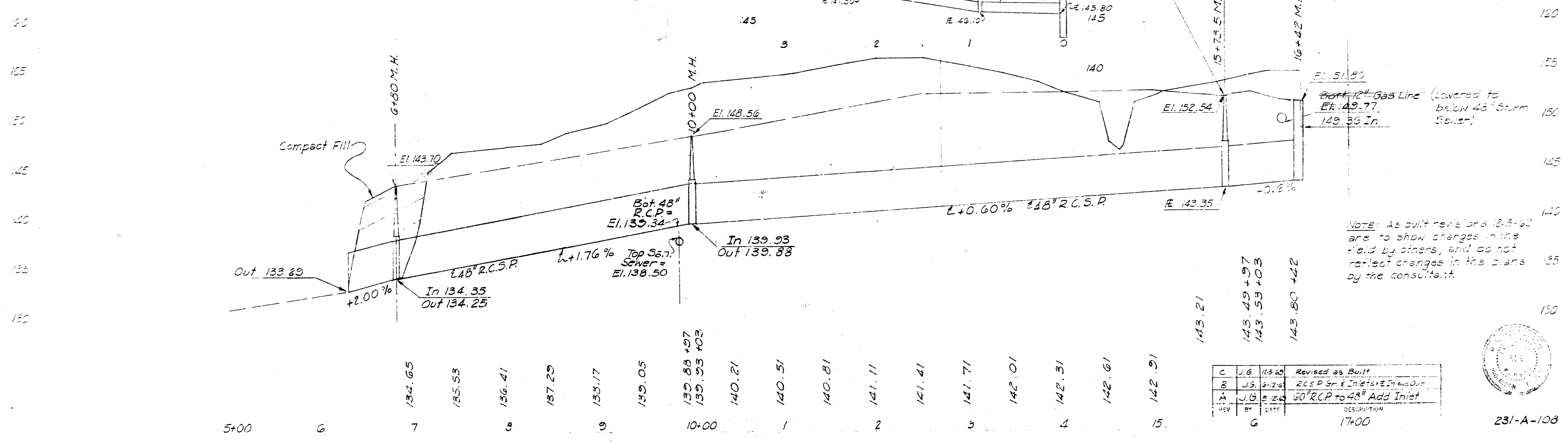
Sta. 6+56 Install 48" x 48" Storm Sewer R.C.P. S.E. Riprap to protect against scouring around pipe by others. (See Sheet 2 of Plans for Box Enclosure and Channel Improvement on Gypsum Creek.)

APPROVED AS NOTED
 BY CITY ENGINEER
 SANITARY SEWER
 DATE: 4/14/69
 BY: [Signature]

This project was constructed under the supervision of the CITY ENGINEER and in accordance with the SPECIFICATIONS for the City of Wichita, Kansas.

NOTE: Construction to be in accordance with City of Wichita current standard specifications for sewer construction. See Sheet 2 for Standard Manhole Details. See Sheet 3 for details of Special Inlet and temporary openings.

48" STORM SEWER LAYOUT
 LANKIN ADDITION
 May, 1969
 R.S. DELAMATER
 CONSULTING ENGINEER
 WICHITA, KANSAS

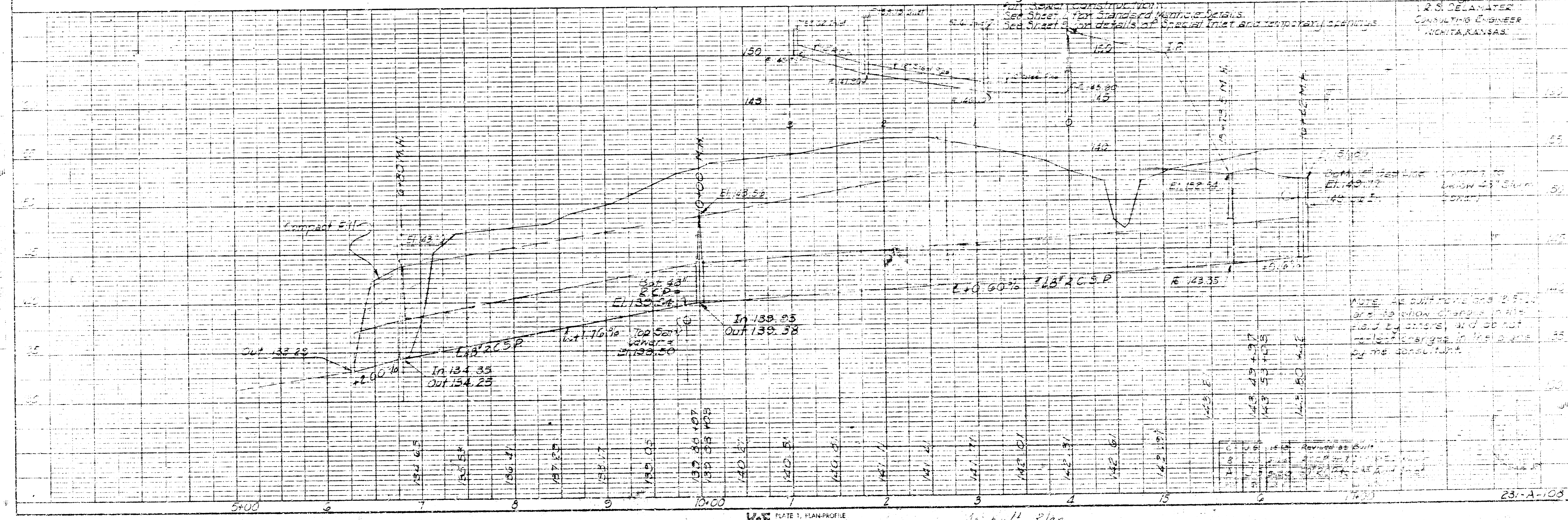
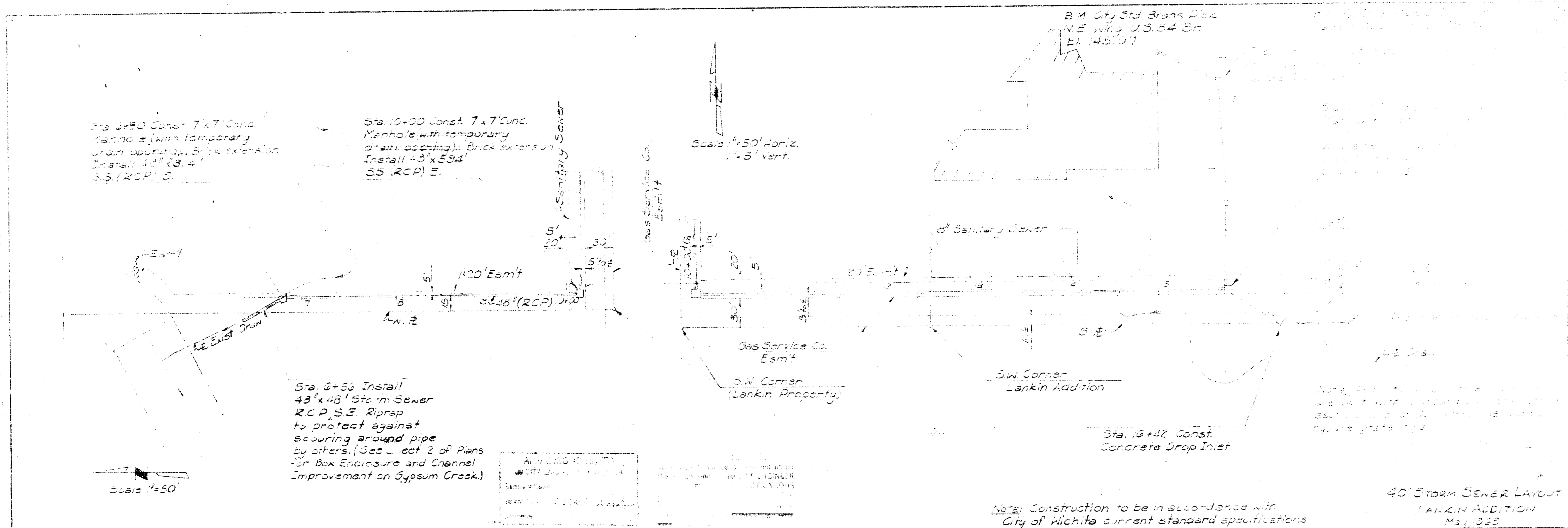


NOTE: As built revisions 12.5+62 are to show changes in the field by others, and do not reflect changes in the plans by the consultant.

REV	DATE	DESCRIPTION
1	10-6	Revised as Built
2	10-12-69	24" R.C.P. Inlet to 48" Manhole
3	10-12-69	60" R.C.P. to 48" Add Inlet



231-A-108



PLAN
 SCALE 1" = 30'
 PROFILE
 SCALE 1" = 3'

40" STORM SEWER LAYOUT
 LANXIN ADDITION
 MSJ 243
 T. S. DELAMATER
 CONSULTING ENGINEER
 WICHITA, KANSAS