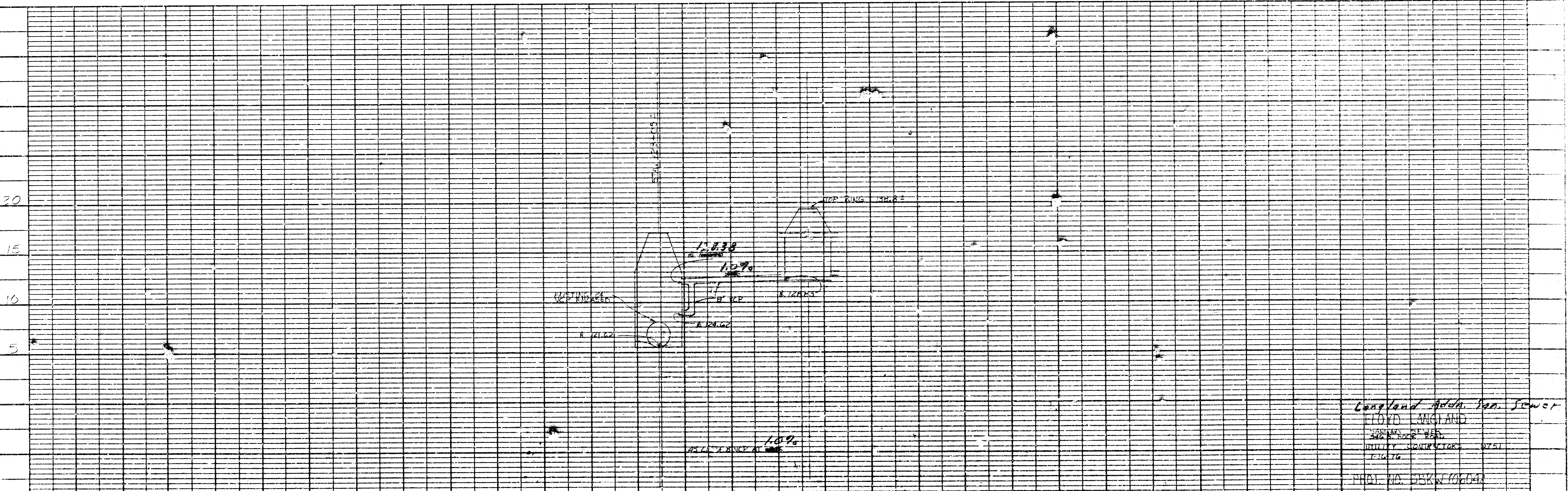
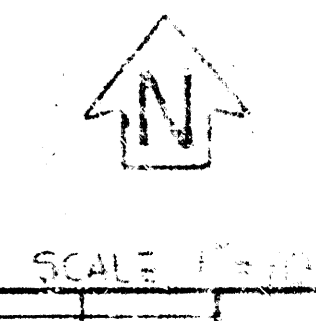


Langland Addn.

7-15-76
 APPROVED AS NOTED
 By CITY ENGINEER OF WICHITA
 Sanitary Sewers _____
 Storm Sewers D.E.S.
 Driveway Approaches _____

REGISTERED PROFESSIONAL ENGINEER
 KANSAS BOARD OF PROFESSIONAL ENGINEERS



Langland Addn. San. Sewer
 CLOYD LANGLAND
 SANITARY SEWER
 UTILITY CONSTRUCTION DISTRICT
 WICHITA
 PROJ. NO. DSKN 00604