

- Notes:
1. Construction shall be in accordance with the City of Wichita specifications for sanitary sewer.
 2. Sewer lines to be installed shall be 3\"/>

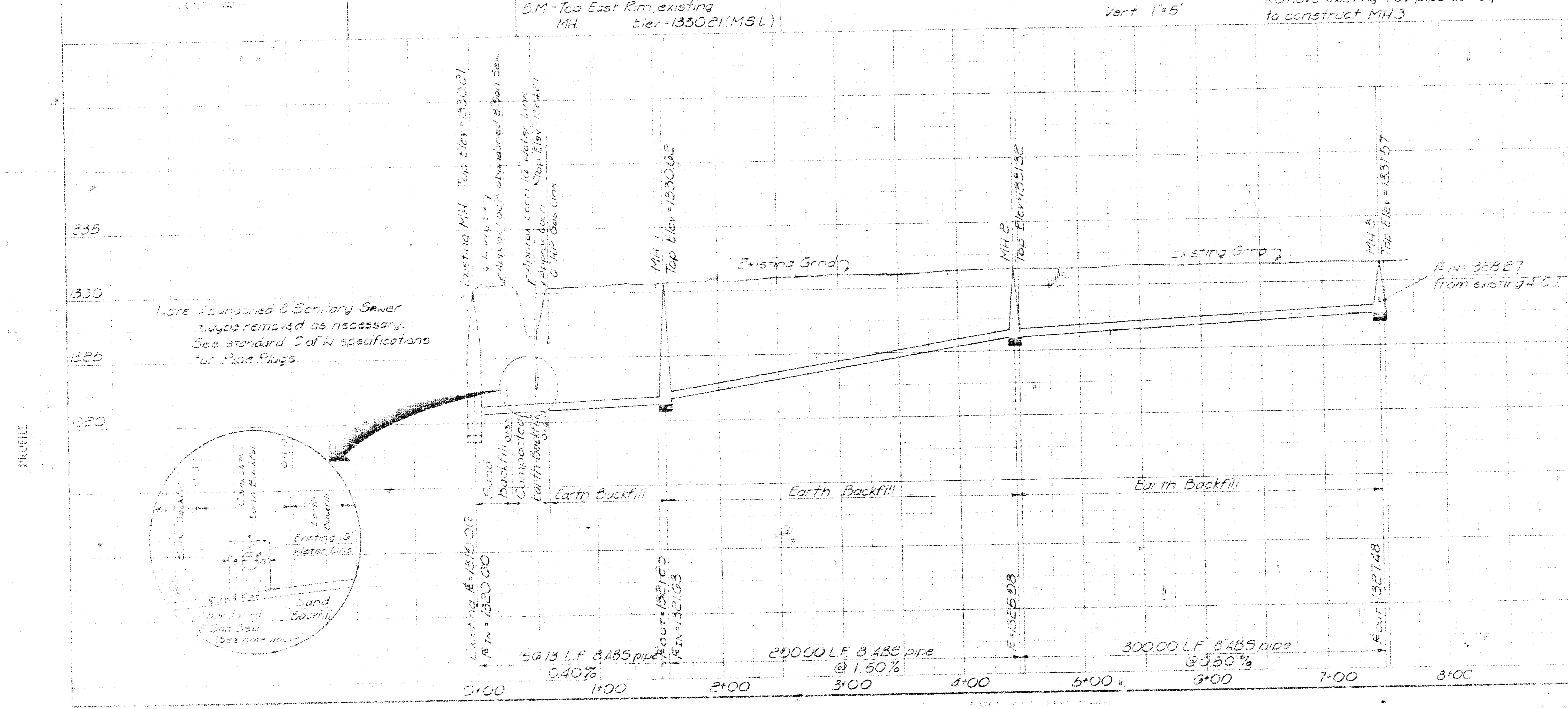
Gas Service Company
 1021 East 24th St. Wichita
 67203-1501 Engineering Dept

City of Wichita Water Dept
 450 N Main St
 67202-4587 Barry Gager

3. Prior to beginning construction the contractor shall verify the flowline elevation of the existing 4\"/>

SCALE:
 Plan 1"=30'
 Profile Horiz 1"=50'
 Vert 1"=5'

* Remove existing 4\"/>



As built 7-10-78

CITY OF WICHITA
 SEWERAGE DEPARTMENT

LEAR JET SEWER

Professional Engineer's Commission

11