

SANITARY SEWER SERVING LOT 1 MEDITERRANEAN PLAZA COMM. 2ND PROJECT NO. 214PPS

CITY OF WICHITA, KANSAS
MICHAEL E. LINDEBAK, CITY ENGINEER

GENERAL NOTES

1. ALL CONSTRUCTION AND MATERIALS TO COMPLY WITH CITY OF WICHITA SPECIFICATIONS AND STANDARDS.
2. THE CONTRACTOR SHALL BE RESPONSIBLE FOR PRESERVING PROPERTY IRONS. THE CONTRACTOR SHALL BE REQUIRED TO RE-ESTABLISH ANY PROPERTY IRONS WHICH ARE DAMAGED OR DESTROYED BY HIS CONSTRUCTION OPERATIONS. SUCH IRONS SHALL BE RE-ESTABLISHED BY A LICENSED LAND SURVEYOR IN ACCORDANCE WITH STATE LAWS.
3. THE CONTRACTOR WILL BE REQUIRED TO PROVIDE A MINIMUM ADVANCE NOTICE OF TWENTY-FOUR (24) HOURS TO UTILITY AND PIPELINE COMPANIES PRIOR TO STARTING ANY EXCAVATION AS FOLLOWS:

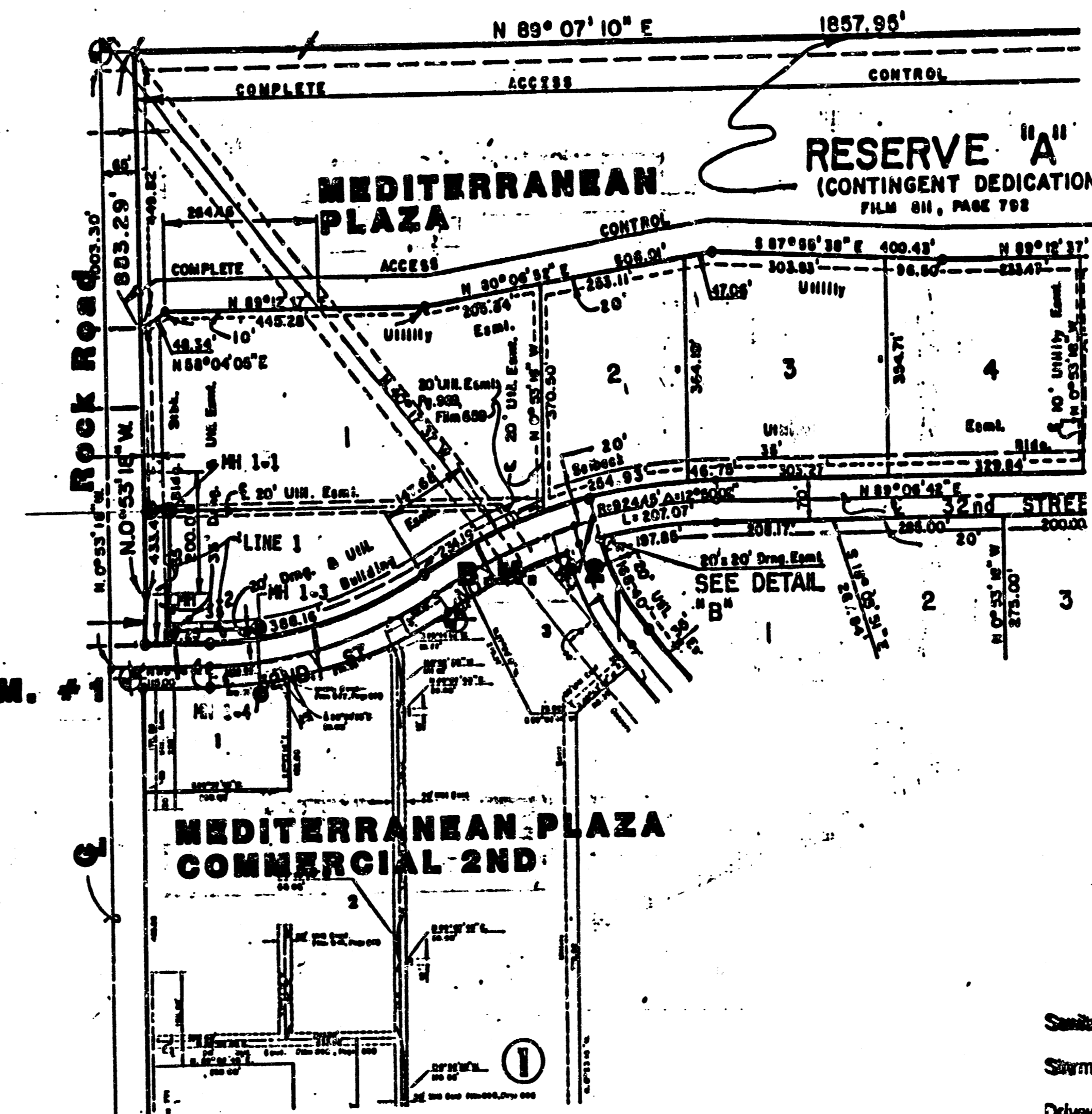
KANSAS ONE-CALL	1-800-344-7233
FARMLAND INDUSTRIES	1-918-333-4111

THE CONTRACTOR MUST NOTIFY THE FOLLOWING IN CASE OF AN EMERGENCY:

ARKLA GAS COMPANY	942-8350 or 263-8161
SOUTHWESTERN BELL TELEPHONE COMPANY	1-316-1-771-2611
CABLEVISION	262-4270 or 262-2061
KPL GAS SERVICE COMPANY	263-7511
KANSAS GAS & ELECTRIC	264-1141
CITY OF WICHITA WATER DEPARTMENT	268-4908
CITY OF WICHITA SEWER MAINTENANCE	268-4071
FARMLAND INDUSTRIES	1-918-333-4111
4. EXISTING UTILITIES AND THEIR LOCATIONS, AS SHOWN ON THE PLANS, REPRESENT THE BEST INFORMATION OBTAINABLE FOR DESIGN. LOCATION INFORMATION HAS BEEN OBTAINED FROM THE VARIOUS UTILITY COMPANIES AND IS EITHER FROM COMPANY RECORD DRAWINGS OR COMPANY PROVIDED FIELD LOCATIONS. THE PLAN LOCATIONS SHOWN ARE NOT GUARANTEED. ADDITIONAL EXISTING UTILITIES MAY ALSO BE ENCOUNTERED.
5. ALL STUBS AND PLUGGED PIPES SHALL BE LOCATED WITH GREEN PLASTIC TAPE IN THE SAME MANNER AS RISERS.
6. COST OF EXCAVATION, HAULING, AND DUMPING OF EXCESS EXCAVATION SHALL BE SUBSIDIARY TO THE PROJECT. POSITIVE DRAINAGE SHALL BE PROVIDED FOR ALL AREAS ON OR NEAR SPOIL AREAS. NATURAL DRAINAGE WAYS SHALL BE MAINTAINED.
7. THE CONTRACTOR SHALL BE RESPONSIBLE FOR MAINTAINING CONTINUOUS FLOW FOR SEWAGE THROUGH CONSTRUCTION. CONTRACTOR'S PROPOSED METHOD FOR MAINTAINING SEWAGE FLOW SHALL BE APPROVED BY THE ENGINEER. COST OF MAINTAINING SEWAGE FLOW THROUGH CONSTRUCTION SHALL BE CONSIDERED SUBSIDIARY TO THE OTHER ITEMS OF WORK.
8. ALL ELEVATIONS SHOWN ARE CITY OF WICHITA DATUM.
CITY DATUM = USGS MSL - 1187.4

BENCH MARKS

- BM #1 R.R. Spike W. Face Power Pole
S.E. Corner Int. of 32nd St. North
& Rock Road
Elev. = 208.86'
- BM #2 * Top Curb Theatre Parking Lot
548' East of East line of Rock Rd.
Elev. = 212.22'

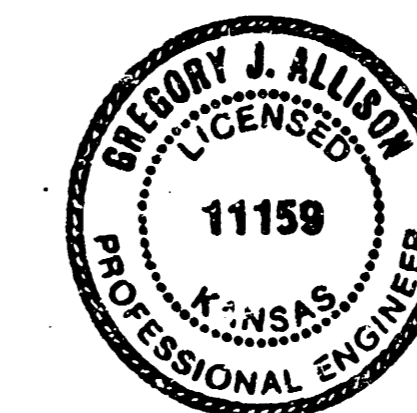
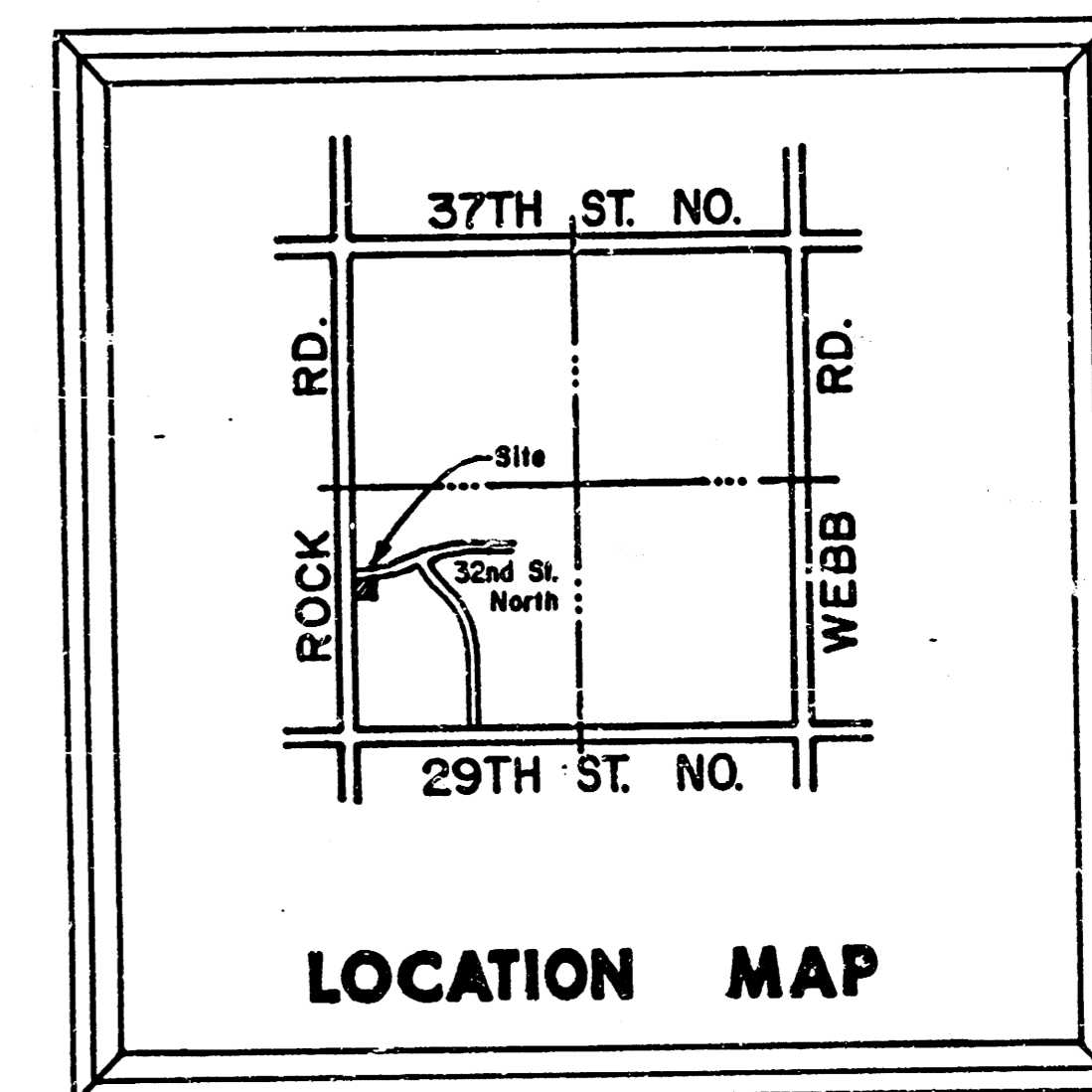


INDEX TO DRAWINGS

SHEET NO.	DESCRIPTION
1	TITLE SHEET
2	PLAN & PROFILE - LINE 1

NOTE TO CONTRACTOR
INSPECTION AND TESTING FOR THIS PROJECT IS TO BE PROVIDED BY A LICENSED CONSULTING ENGINEERING FIRM UNDER CONTRACT WITH THE OWNER/DEVELOPER. SAID INSPECTION TO BE IN ACCORDANCE WITH THE CITY OF WICHITA STANDARD CONSTRUCTION ENGINEERING PRACTICES AND CERTIFIED BY A LICENSED PROFESSIONAL ENGINEER. NO WORK SHALL BE PERFORMED IN DEDICATED EASEMENTS OR THE PUBLIC RIGHT-OF-WAY BY THE CONTRACTOR WITHOUT SUCH INSPECTION NOR SHALL ANY WORK BE COMMENCED IN DEDICATED EASEMENTS OR PUBLIC RIGHT-OF-WAY WITHOUT WRITTEN AUTHORIZATION BY THE CITY ENGINEER.

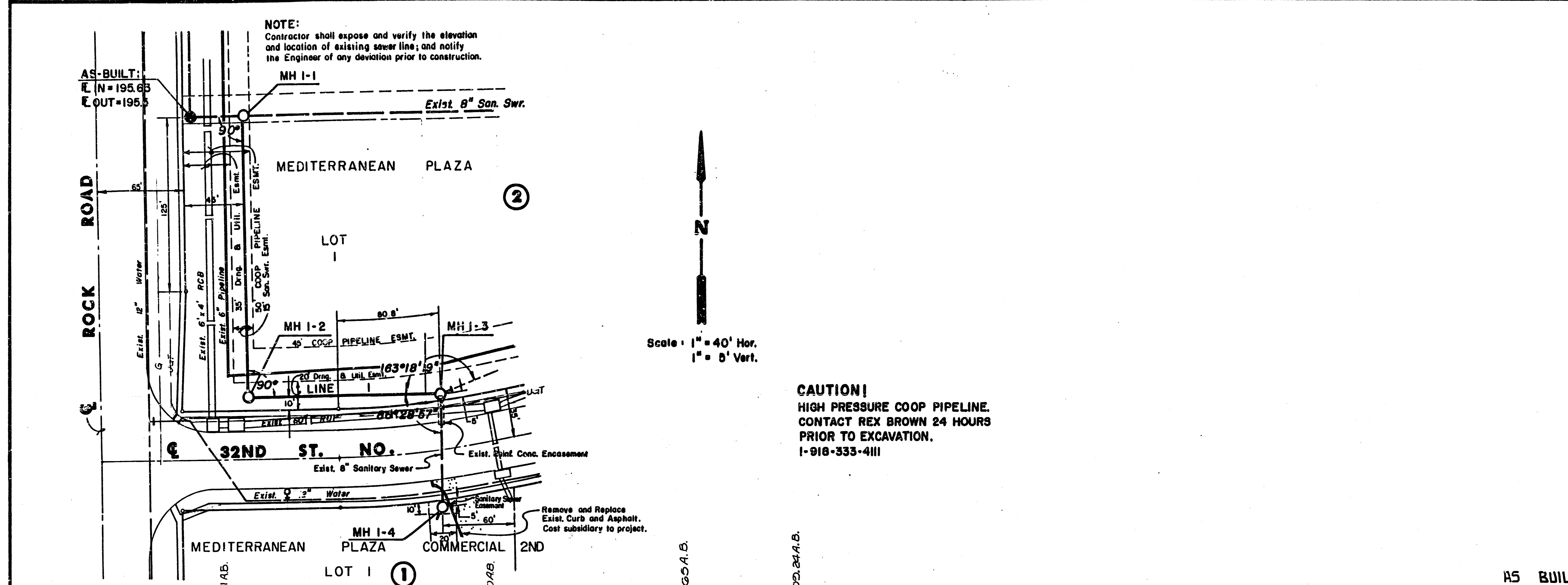
APPROVED AS NOTED
By CITY ENGINEER OF WICHITA
Sanitary Sewers VRH 6/26/89
Storm Sewers _____
Driveway Approaches _____
Water Mains _____
Paving _____



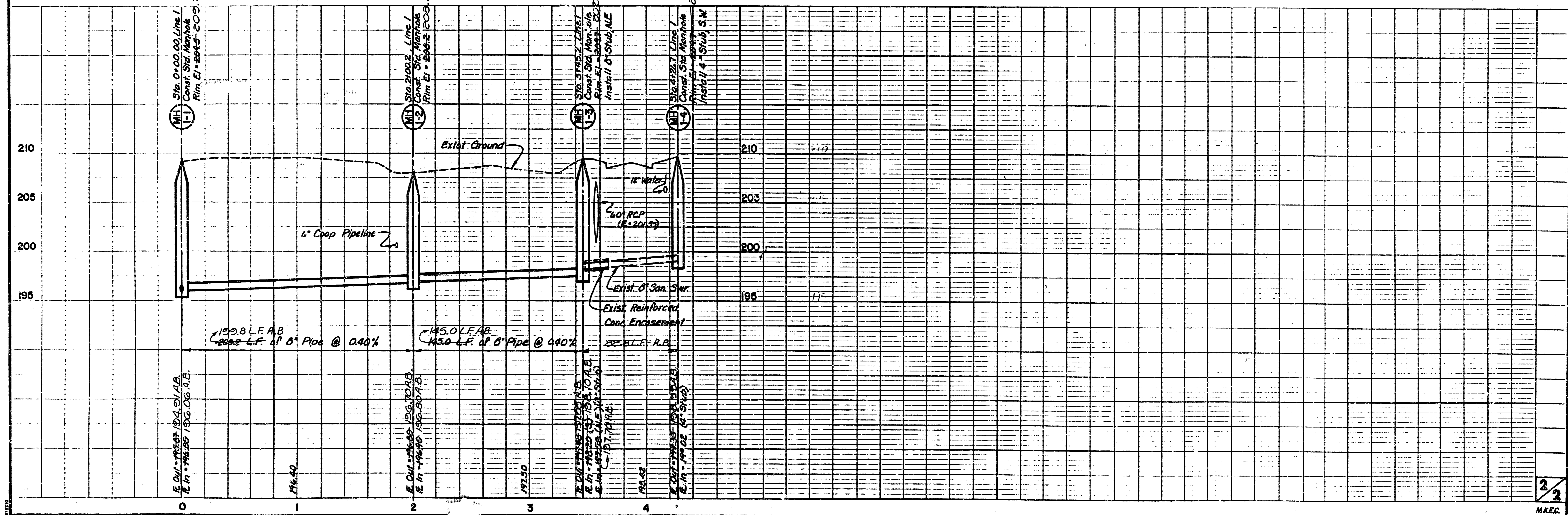
MK	AS BUILT AUG. 1989	Design <u>GA</u>
	MEDITERRANEAN PLAZA COMM. 2ND. SANITARY SEWER PLANS	Drawn by <u>KKL</u>
		Checked by _____
		Date <u>May '89</u>
		Job no. _____
MID-KANSAS ENGINEERING CONSULTANTS PA 3500 NORTH ROCK ROAD BUILDING #800 WICHITA, KANSAS 67226		636-5566
		Sheet <u>1</u> of <u>2</u>

MKEC Proj. 888-45-145

FILMED FROM THE BEST
AVAILABLE COPY



AS BUILT AUG., 1989



2/2
 MKC.

SANITARY SEWER SERVING LOT 1 MEDITERRANEAN PLAZA COMM. 2ND PROJECT NO. 214PPS

CITY OF WICHITA, KANSAS
MICHAEL E. LINDEBAK, CITY ENGINEER

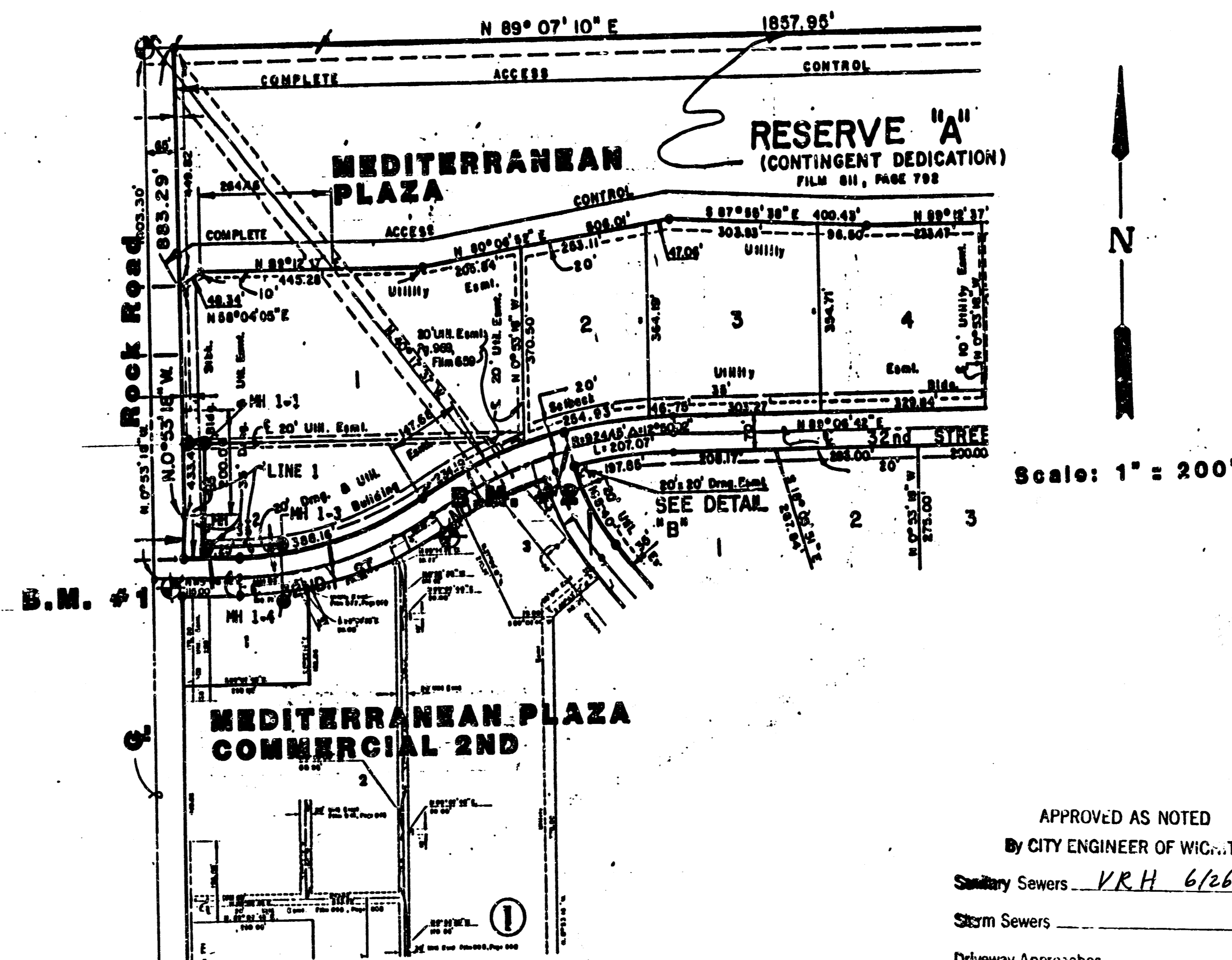
GENERAL NOTES

1. ALL CONSTRUCTION AND MATERIALS TO COMPLY WITH CITY OF WICHITA SPECIFICATIONS AND STANDARDS.
2. THE CONTRACTOR SHALL BE RESPONSIBLE FOR PRESERVING PROPERTY IRONS. THE CONTRACTOR SHALL BE REQUIRED TO RE-ESTABLISH ANY PROPERTY IRONS WHICH ARE DAMAGED OR DESTROYED BY HIS CONSTRUCTION OPERATIONS. SUCH IRONS SHALL BE RE-ESTABLISHED BY A LICENSED LAND SURVEYOR IN ACCORDANCE WITH STATE LAWS.
3. THE CONTRACTOR WILL BE REQUIRED TO PROVIDE A MINIMUM ADVANCE NOTICE OF TWENTY-FOUR (24) HOURS TO UTILITY AND PIPELINE COMPANIES PRIOR TO STARTING ANY EXCAVATION AS FOLLOWS:

KANSAS ONE-CALL	1-800-344-7773
FARMLAND INDUSTRIES	1-918-333-4111
THE CONTRACTOR MUST NOTIFY THE FOLLOWING IN CASE OF AN EMERGENCY:	
ARKLA GAS COMPANY	942-8350 or 263-8161
SOUTHWESTERN BELL TELEPHONE COMPANY	1-316-1-671-2611
CABLEVISION	262-4270 or 262-2061
KPL GAS SERVICE COMPANY	263-7511
KANSAS GAS & ELECTRIC	264-1141
CITY OF WICHITA WATER DEPARTMENT	268-4908
CITY OF WICHITA SEWER MAINTENANCE	268-4071
FARMLAND INDUSTRIES	1-918-333-4111
4. EXISTING UTILITIES AND THEIR LOCATIONS, AS SHOWN ON THE PLANS, REPRESENT THE BEST INFORMATION OBTAINABLE FOR DESIGN. LOCATION INFORMATION HAS BEEN OBTAINED FROM THE VARIOUS UTILITY COMPANIES AND IS EITHER FROM COMPANY RECORD DRAWINGS OR COMPANY PROVIDED FIELD LOCATIONS. THE PLAN LOCATIONS SHOWN ARE NOT GUARANTEED. ADDITIONAL EXISTING UTILITIES MAY ALSO BE ENCOUNTERED.
5. ALL STUBS AND PLUGGED PIPES SHALL BE LOCATED WITH GREEN PLASTIC TAPE IN THE SAME MANNER AS RISERS.
6. COST OF EXCAVATION, HAULING, AND DUMPING OF EXCESS EXCAVATION SHALL BE SUBSIDIARY TO THE PROJECT. POSITIVE DRAINAGE SHALL BE PROVIDED FOR ALL AREAS ON OR NEAR SPOIL AREAS. NATURAL DRAINAGE WAYS SHALL BE MAINTAINED.
7. THE CONTRACTOR SHALL BE RESPONSIBLE FOR MAINTAINING CONTINUOUS FLOW FOR SEWAGE THROUGH CONSTRUCTION. CONTRACTOR'S PROPOSED METHOD FOR MAINTAINING SEWAGE FLOW SHALL BE APPROVED BY THE ENGINEER. COST OF MAINTAINING SEWAGE FLOW THROUGH CONSTRUCTION SHALL BE CONSIDERED SUBSIDIARY TO THE OTHER ITEMS OF WORK.
8. ALL ELEVATIONS SHOWN ARE CITY OF WICHITA DATUM.
CITY DATUM = USGS MSL - 1187.4

BENCH MARKS

- BM #1 R.R. Spike V. Face Power Pole
S.E. Corner Int. of 32nd St. North
& Rock Road
Elev. = 208.86'
- BM #2 "□" Top Curb Theatre Parking Lot
548' ± East of East line of Rock Rd.
Elev. = 212.22'



Scale: 1" = 200'

APPROVED AS NOTED
By CITY ENGINEER OF WICHITA
Sanitary Sewers VRH 6/26/89
Storm Sewers _____
Driveway Approaches _____
Water Mains _____
Paving _____

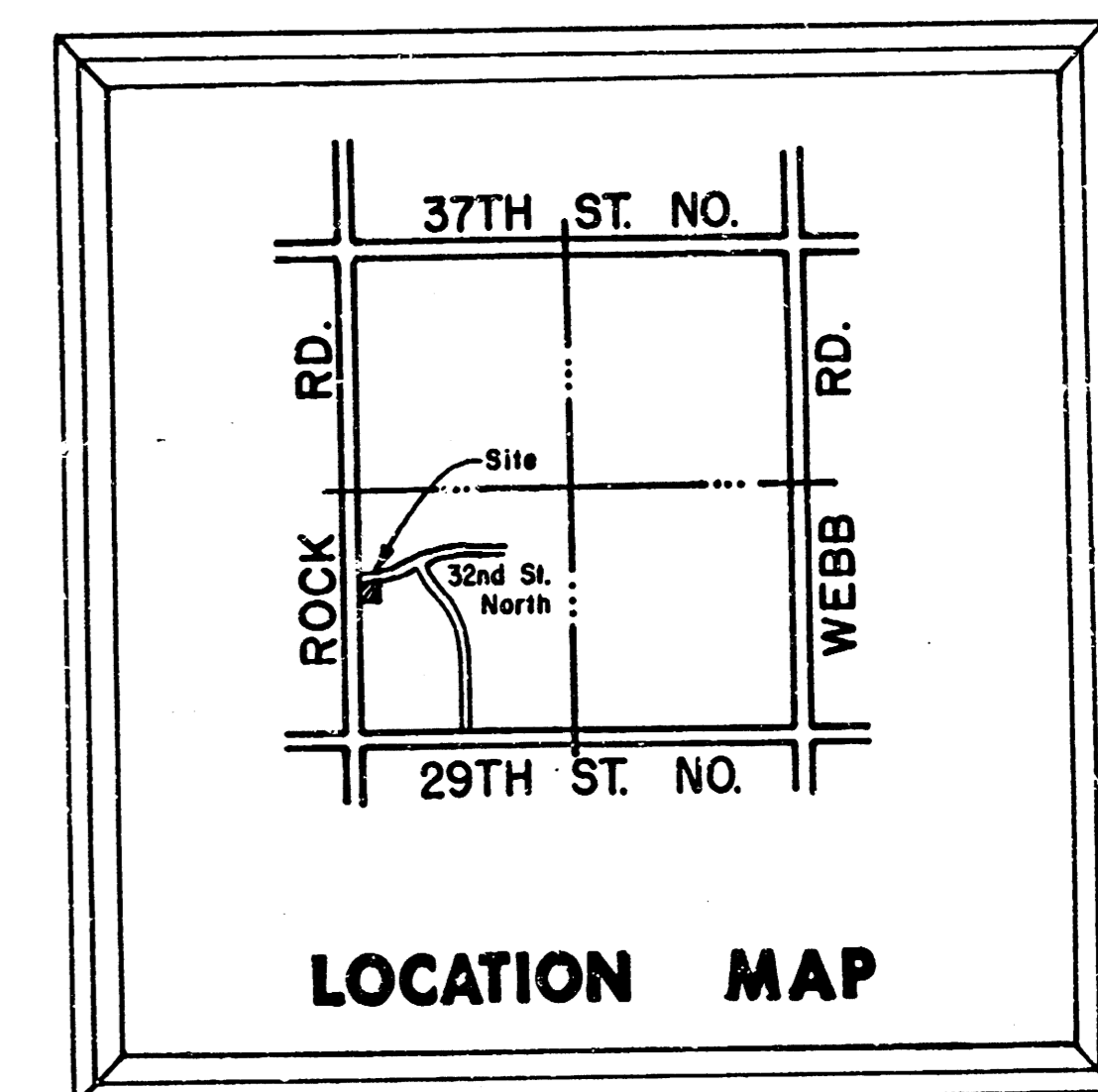


INDEX TO DRAWINGS

SHEET NO.	DESCRIPTION
1	TITLE SHEET
2	PLAN & PROFILE - LINE 1

NOTE TO CONTRACTOR

INSPECTION AND TESTING FOR THIS PROJECT IS TO BE PROVIDED BY A LICENSED CONSULTING ENGINEERING FIRM UNDER CONTRACT WITH THE OWNER/DEVELOPER. SAID INSPECTION TO BE IN ACCORDANCE WITH THE CITY OF WICHITA STANDARD CONSTRUCTION ENGINEERING PRACTICES AND CERTIFIED BY A LICENSED PROFESSIONAL ENGINEER. NO WORK SHALL BE PERFORMED IN DEDICATED EASEMENTS OR THE PUBLIC RIGHT-OF-WAY BY THE CONTRACTOR WITHOUT SUCH INSPECTION NOR SHALL ANY WORK BE COMMENCED IN DEDICATED EASEMENTS OR PUBLIC RIGHT-OF-WAY WITHOUT WRITTEN AUTHORIZATION BY THE CITY ENGINEER.



	MEDITERRANEAN PLAZA COMM. 2ND.	Design <u>GA</u>
	SANITARY SEWER PLANS	Drawn by <u>KKL</u>
		Checked by _____
		Date <u>May '89</u>
		Job no. _____
MID-KANSAS ENGINEERING CONSULTANTS PA 3500 NORTH ROCK ROAD BUILDING 1800 WICHITA, KANSAS 67226		Sheet <u>1</u> of <u>2</u>

MKEC Proj. 888-45-145

FILMED FROM THE BEST
AVAILABLE COPY

