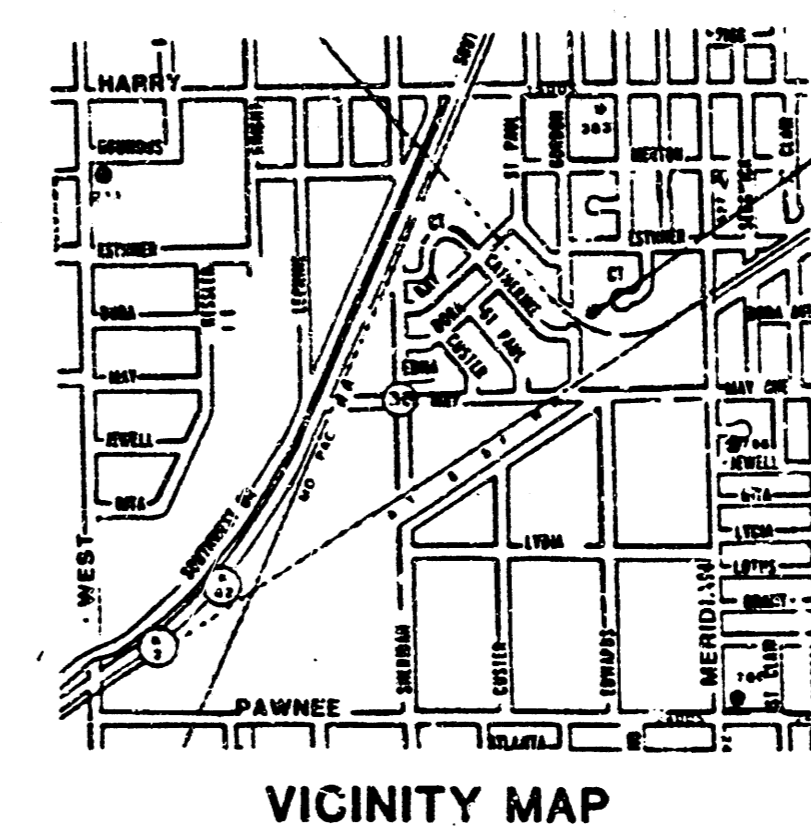
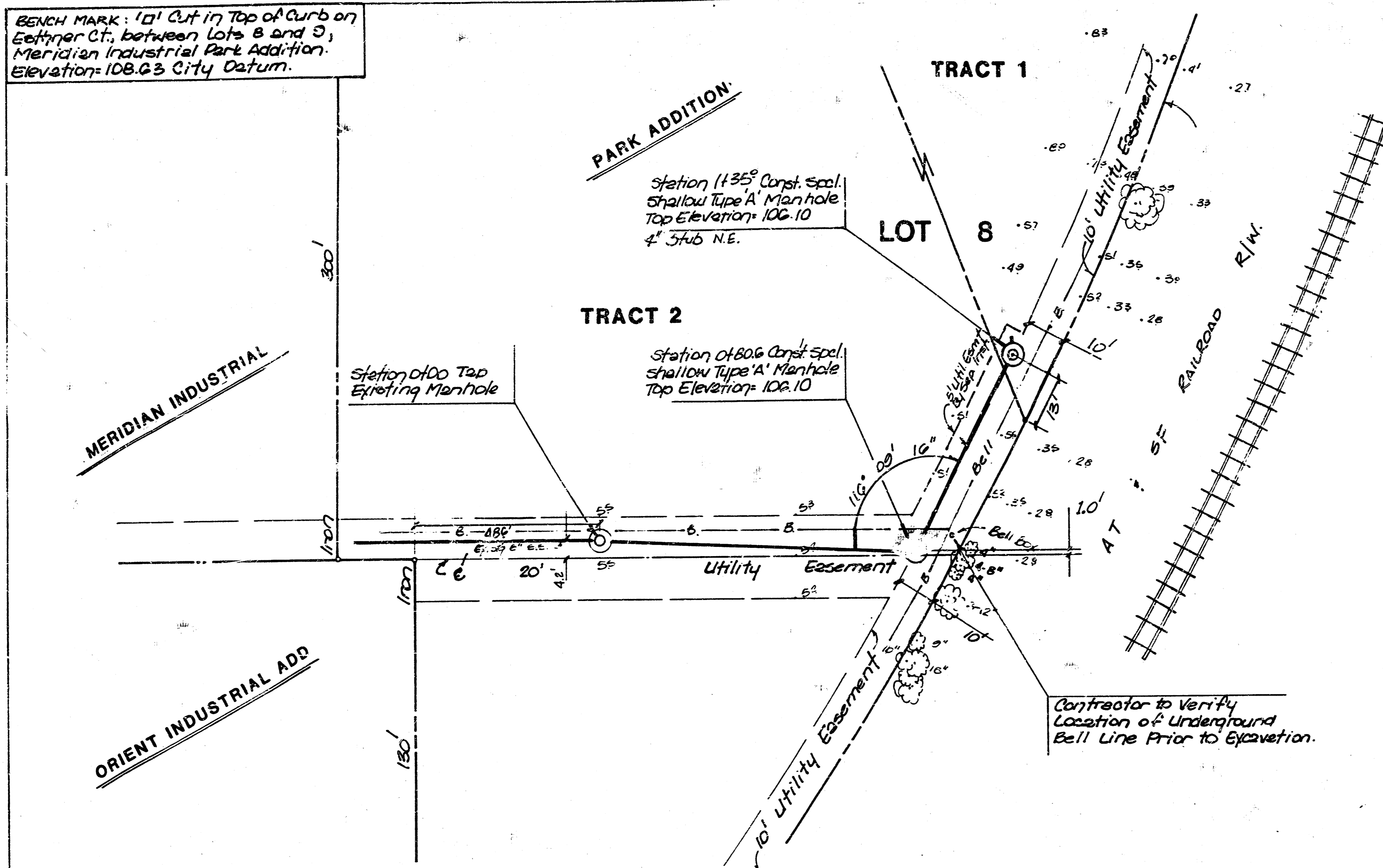


BENCH MARK: 1'0" Cut in Top of Curb on Eastiner Ct., between Lots 8 and 9, Meridian Industrial Park Addition. Elevation: 108.63 City Datum.

DATE: 10/3/86
 BY: [Signature]
 CHECKED BY: [Signature]
 PLAN NO. [Blank]
 NOTE BOOK NO. [Blank]



By CITY ENGINEER OF WICHITA
 Sanitary Sewers: [Signature]
 Storm Sewers: [Blank]
 Dr. [Blank]
 Water Mains: [Blank]
 Pavement: [Blank]

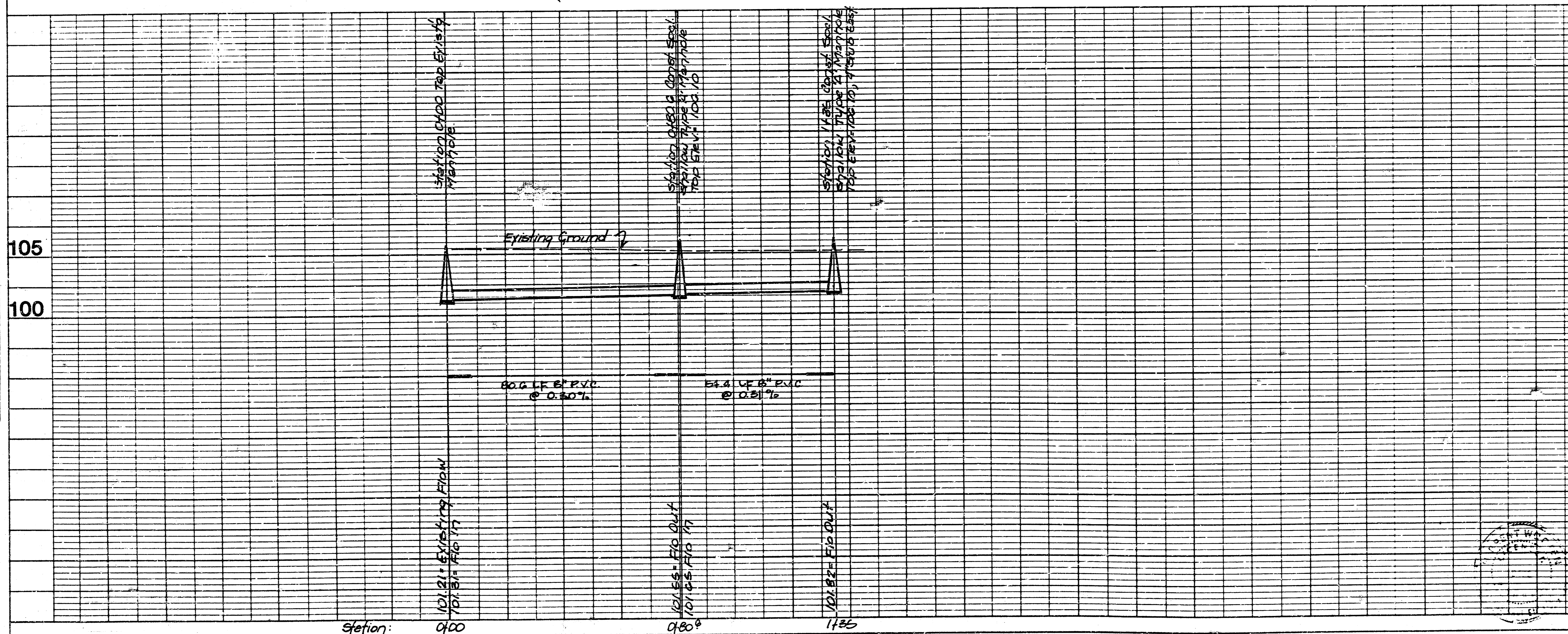
NOTE TO CONTRACTOR
 This project will be under the supervision of the CITY ENGINEER OF WICHITA. The CONTRACTOR will be responsible for all costs of review, inspection and booking per [Blank]

GENERAL NOTES

The Contractor will be required to re-establish any property irons which are damaged or destroyed by his construction operations. Such irons shall be re-established by a licensed land surveyor or a licensed professional engineer in accordance with state laws.
 The Contractor shall notify Kansas One-Call 1-800-344-7233 to verify the location and depth of the Bell Telephone Cable and any other underground utilities located in the easements. Any relocation of utilities will be made at the owners expense.
 Bell Telephone: 571-2115

SCALE 1" = 20' PLAN
 1" = 5' PROFILE

DATE: [Blank]
 BY: [Blank]
 CHECKED BY: [Blank]
 PROFILE NO. [Blank]
 NOTE BOOK NO. [Blank]



Revised December 1986
 October, 1986

PRIVATE SANITARY SEWER EXTENSION TO SERVE PART OF LOT 8, MERIDIAN INDUSTRIAL PARK ADDITION
 CITY OF WICHITA, KANSAS
 PROJECT NO. 488-7B-245-8001-000-000-500

BAUGHMAN COMPANY, P.A.
 SURVEYING & ENGINEERING
 316282-7271 • 315 ELLIS • WICHITA, KANSAS 67211

10 3 3 8

FILMED FROM THE BEST AVAILABLE COPY