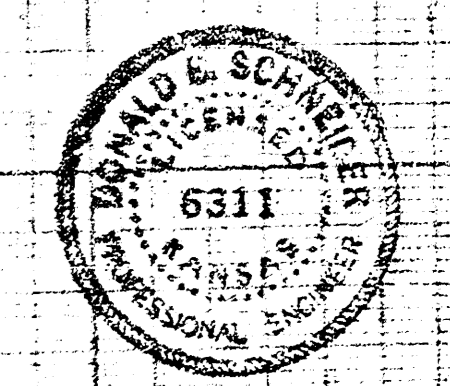
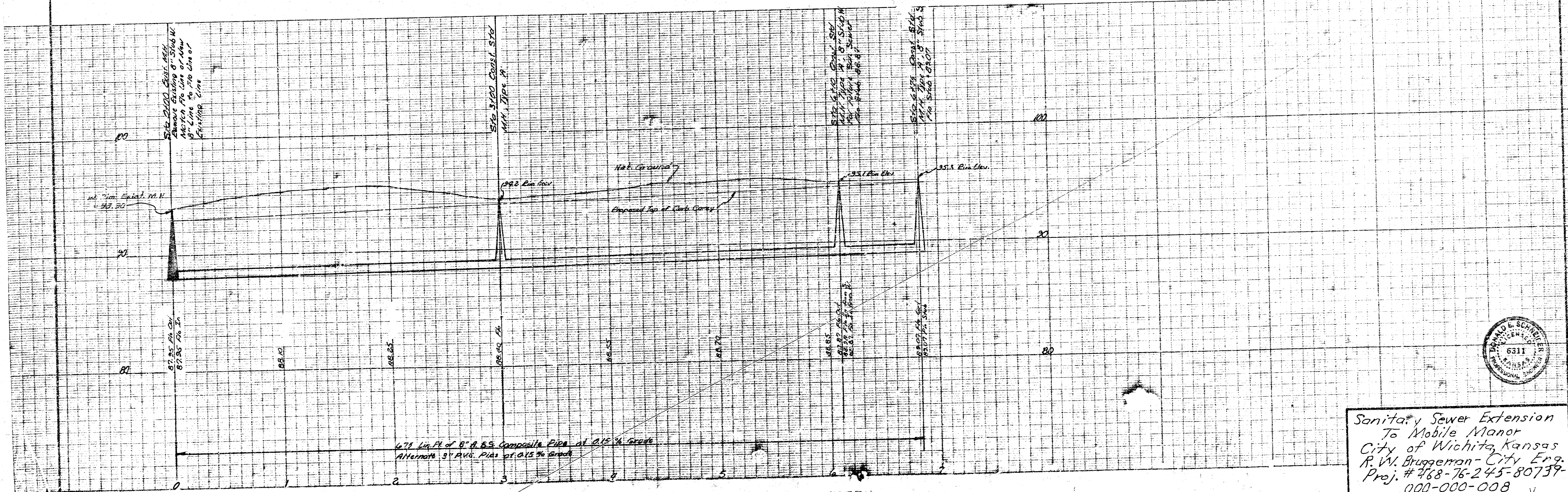
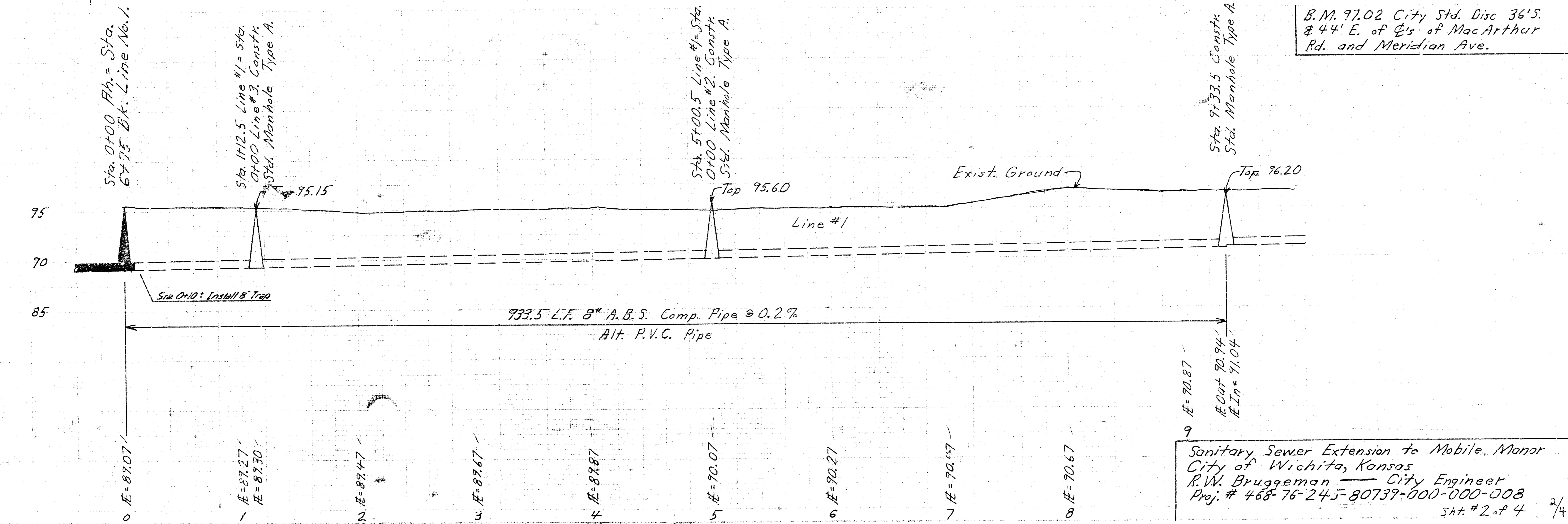
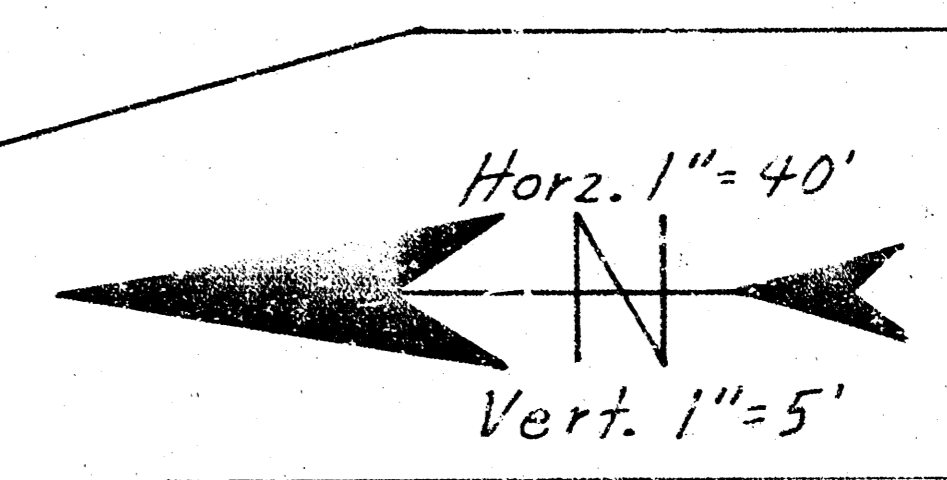
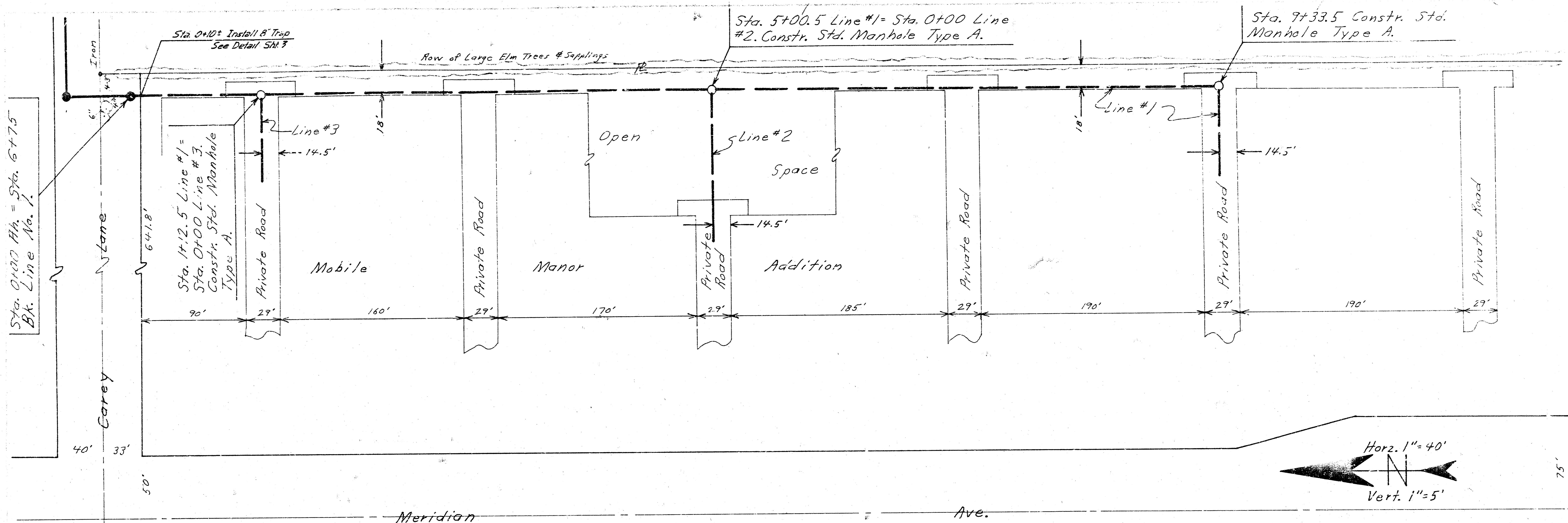


**NOTE TO CONTRACTOR**  
 This project will be constructed under the supervision of the CITY ENGINEER and conforming to the SPECIFICATIONS of the CITY OF WICHITA. The CONTRACTOR will reimburse the City of Wichita for all cost of Engineering, Plans, and Inspection.

B.M. 94.97 R.R. Spike E. Face P.P. N.E. Cor. Meridian & Carey Lane



Sanitary Sewer Extension  
 To Mobile Manor  
 City of Wichita, Kansas  
 R. W. Bruggeman - City Eng.  
 Proj. # 768-76-245-80739  
 000-000-008



B.M. 97.02 City Std. Disc 36'S. 44' E. of C's of MacArthur Rd. and Meridian Ave.

Sanitary Sewer Extension to Mobile Manor  
 City of Wichita, Kansas  
 R.W. Bruggeman — City Engineer  
 Proj. # 468-76-245-80739-000-008  
 Sht. # 2 of 4

