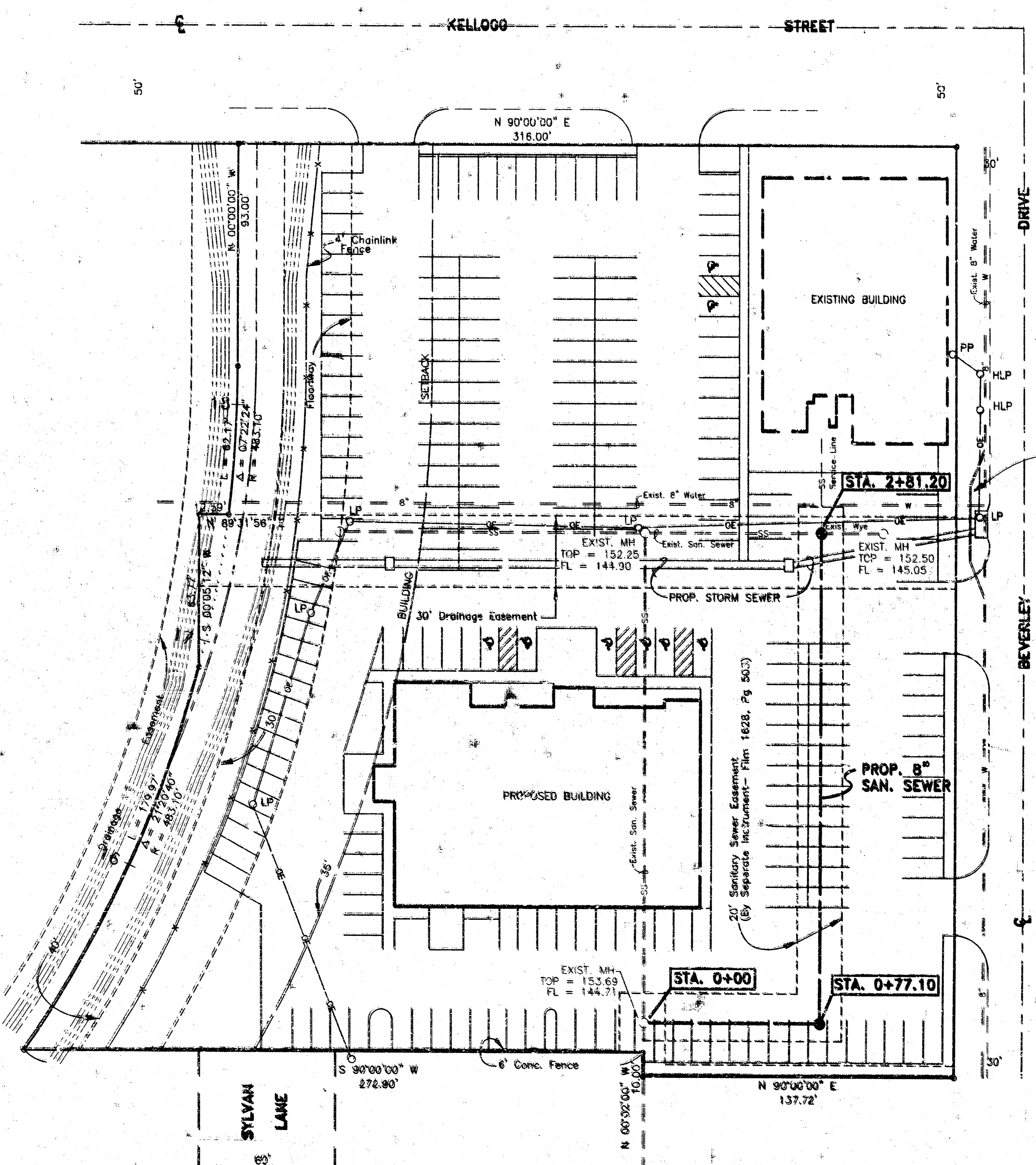


NEW WESTERN 4TH ADDITION

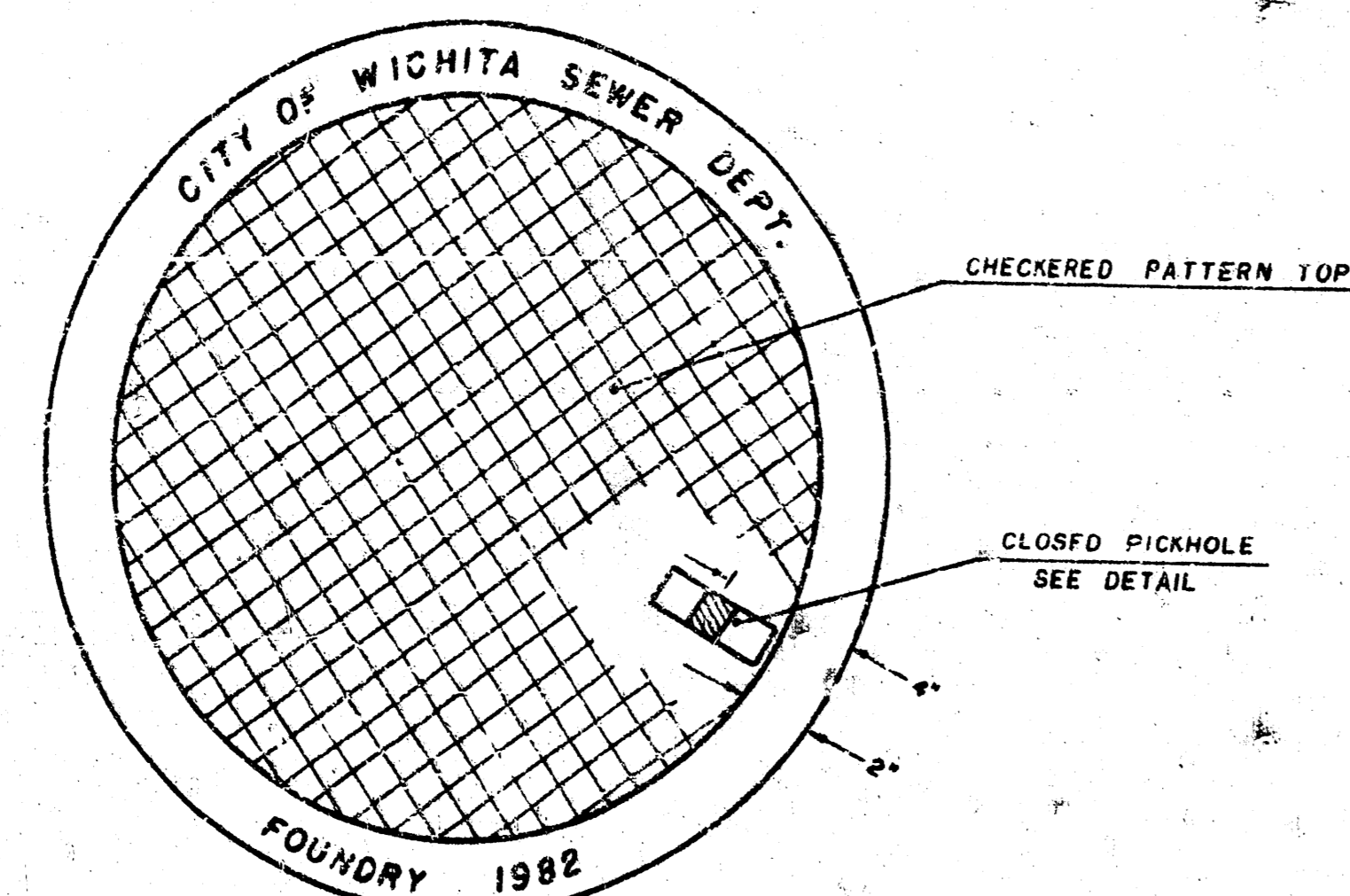


<b>SANITARY SEWER KEY MAP</b>	
<b>MOHRING &amp; ASSOCIATES</b> CONSULTING ENGINEERS - SURVEYORS	
433 S. HYDRAULIC WICHITA, KS. (316) 263-8291	
PRIVATE PROJ. NO. 648PPS / INDEX NO. 507861	DATE: JULY 1996
SHEET 2	

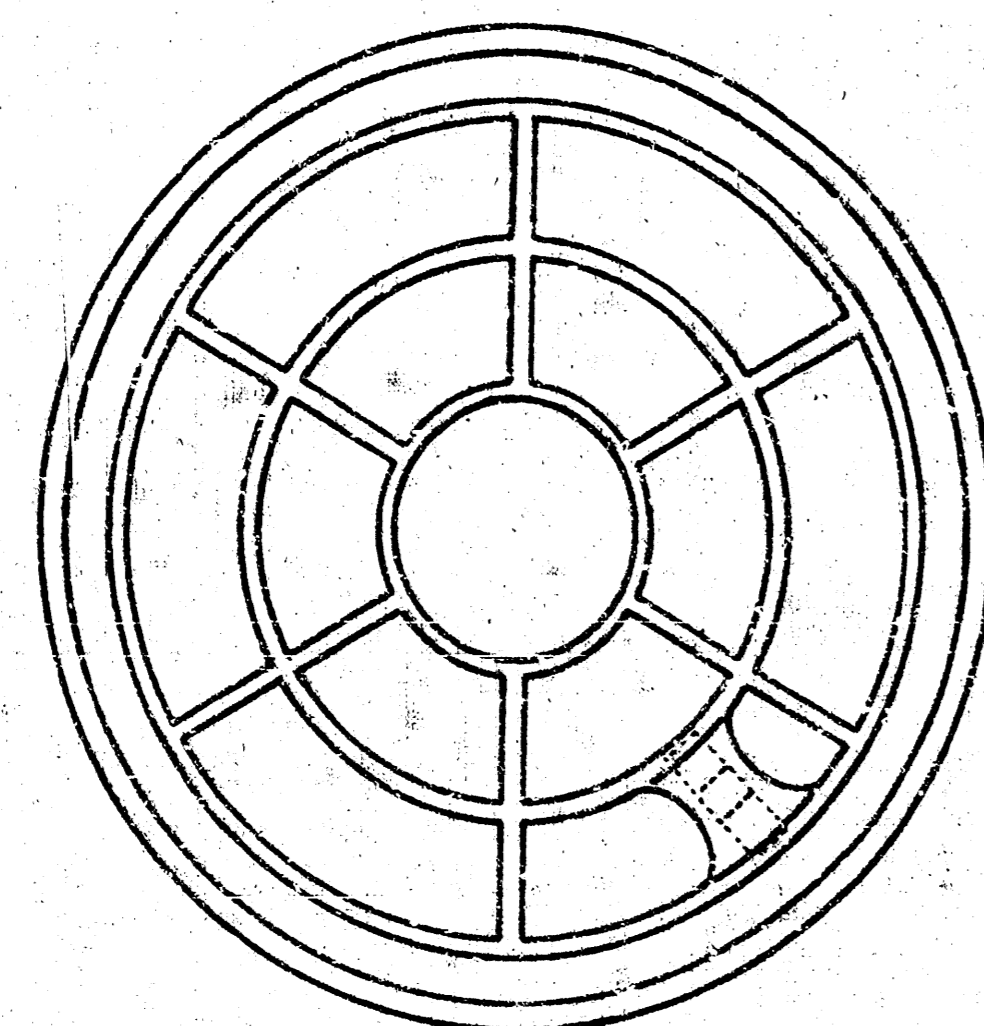
# MANHOLE FRAME AND COVER DETAIL

## MANHOLE COVER

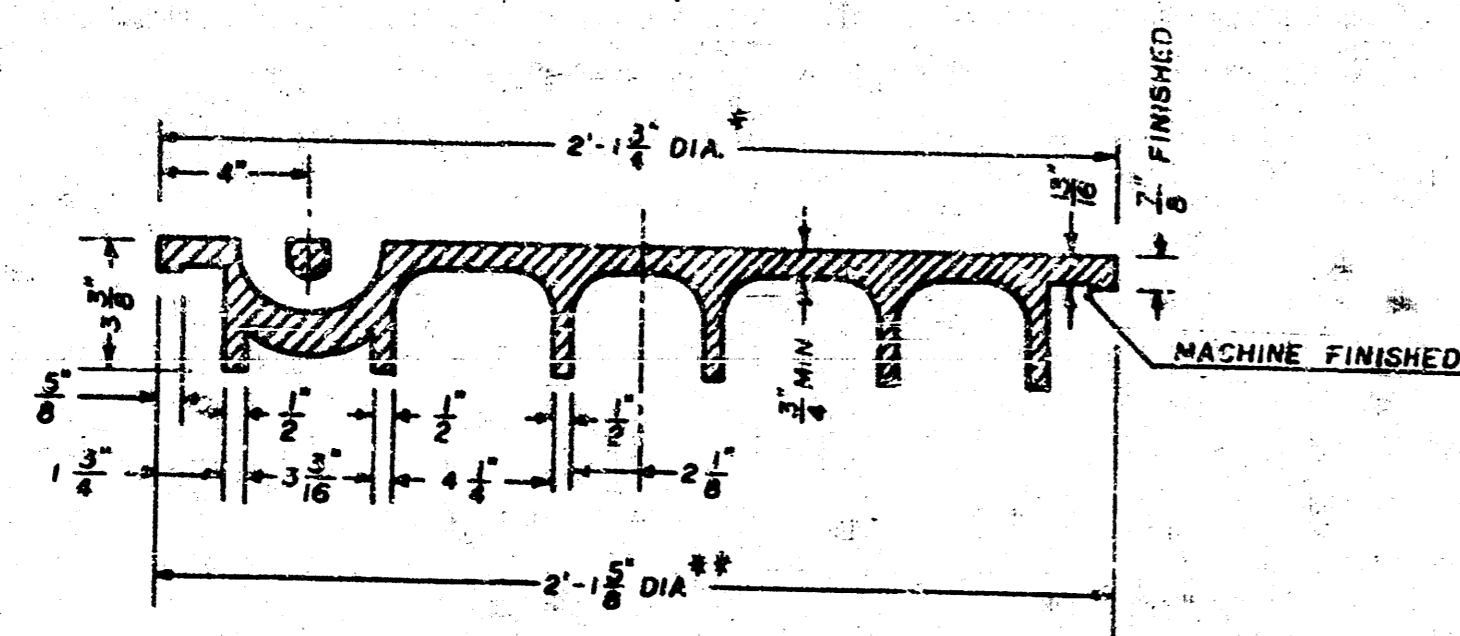
Weight: 180 Lbs.



TOP VIEW



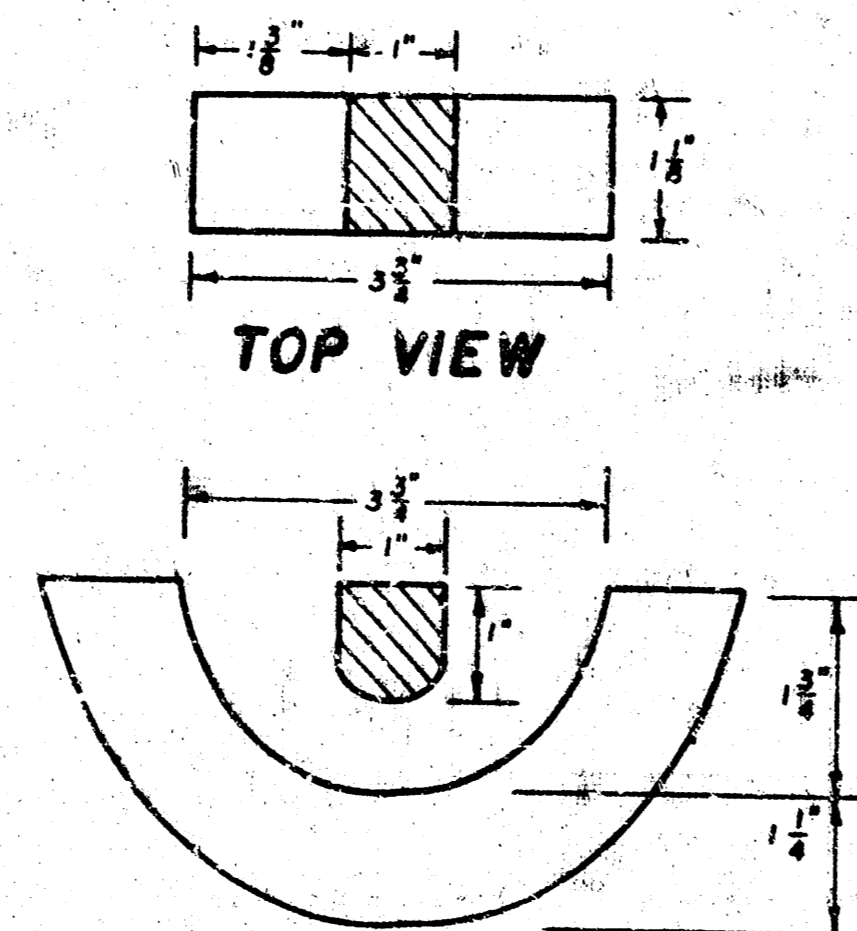
BOTTOM VIEW



SECTION VIEW

\* OUTSIDE DIA. TOP OF COVER  
\*\* OUTSIDE DIA. BOTTOM OF COVER

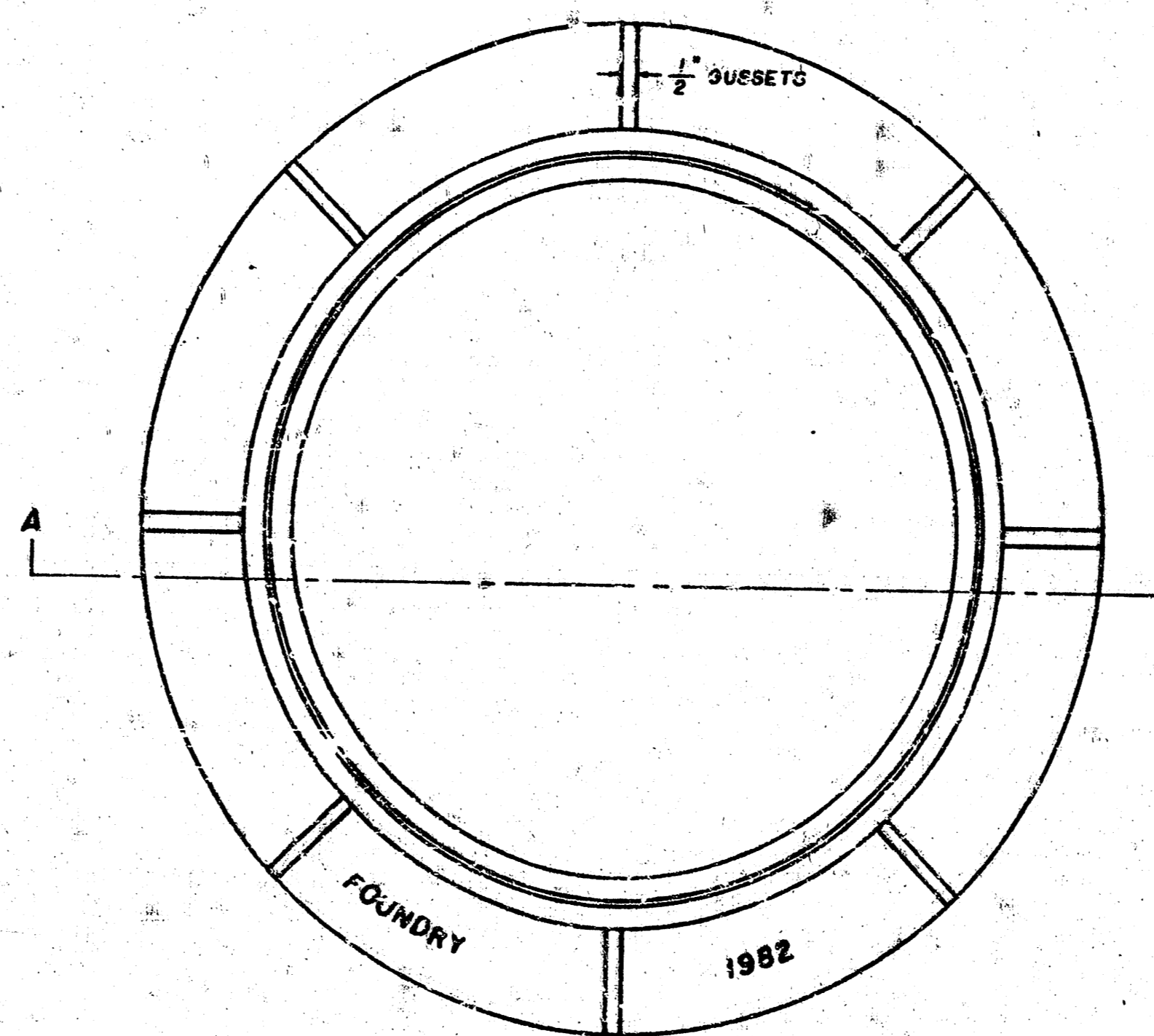
## PICKHOLE DETAIL



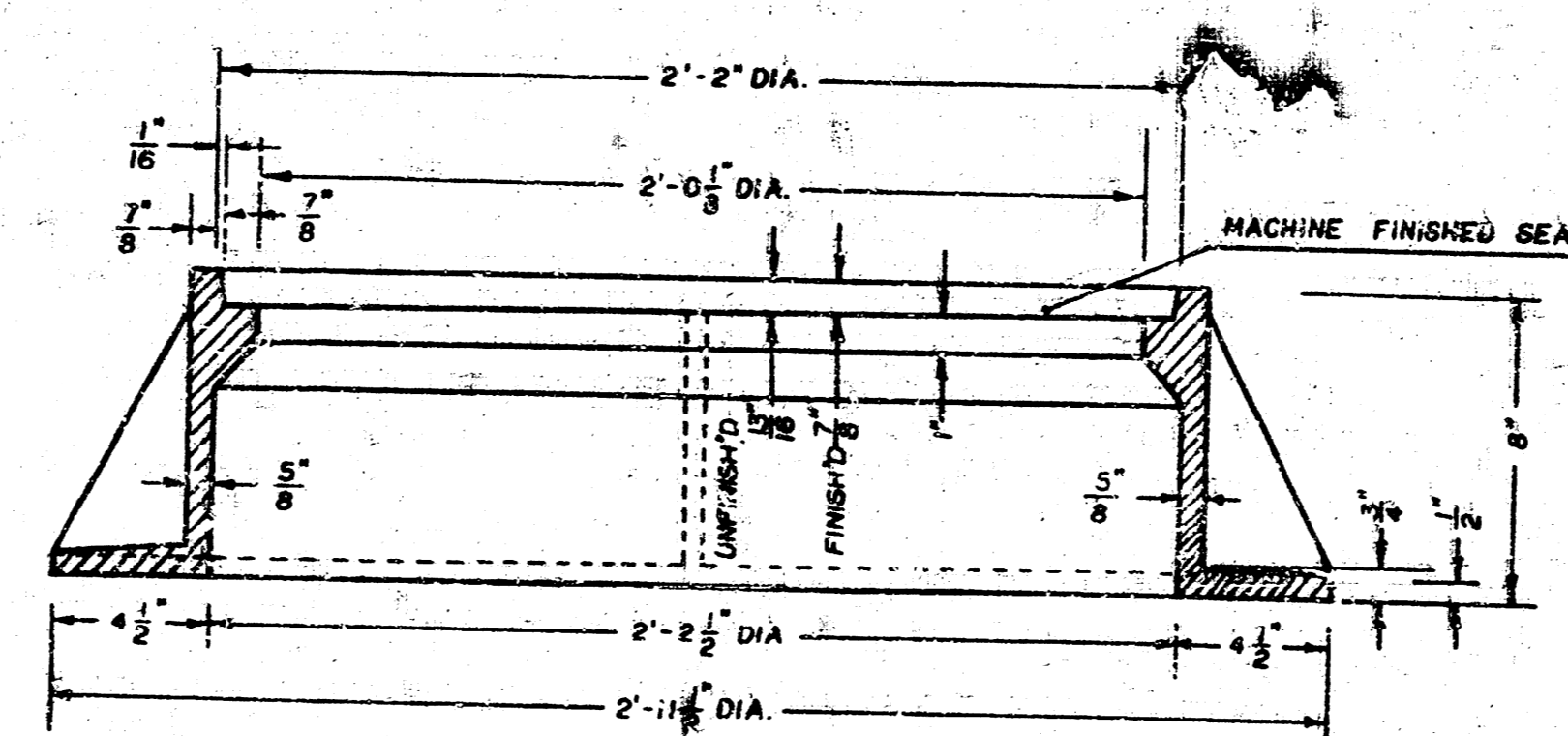
SECTION VIEW

## MANHOLE FRAME

Weight: 240 Lbs.



TOP VIEW



SECTION A-A

### GENERAL NOTES

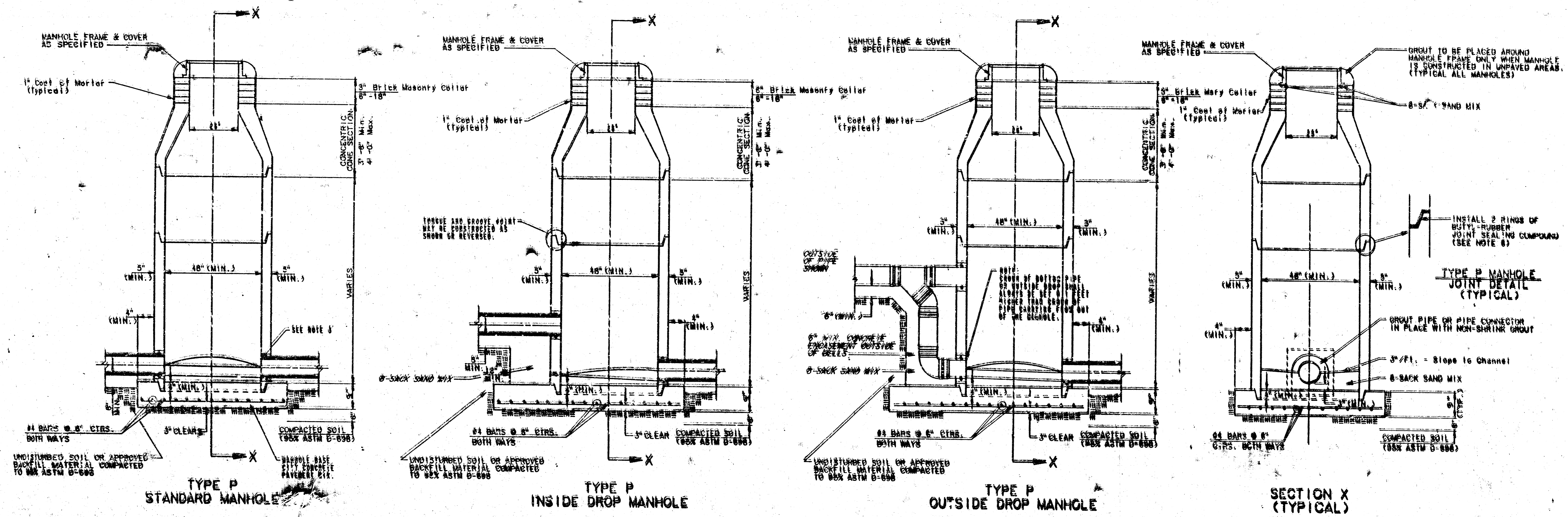
1. MANHOLE CASTINGS SHALL BE MANUFACTURED USING GOOD QUALITY GRAY IRON CONFORMING TO CLASS 30 OF A.S.T.M. DESIGNATION A-48. DIMENSIONS AND WEIGHTS SHOWN ON THE DETAILED DRAWINGS SHALL BE CONSIDERED AS MINIMUM REQUIREMENTS AND ANY DEVIATIONS FROM THE DIMENSIONS SHOWN MUST BE SPECIFICALLY APPROVED. THE FINISHED CASTINGS SHALL BE OF UNIFORM QUALITY, FREE FROM BLOWHOLES, POROSITY, HARD SPOTS, SHRINKAGE DISTORTIONS OR OTHER DEFECTS.
2. MANHOLE CASTINGS SHALL BE COATED WITH AN ASPHALT PAINT RESULTING IN A SMOOTH, TOUGH AND TENACIOUS COATING WHICH IS NOT BRITTLE OR TACKY.
3. MANHOLE CASTINGS SHALL BE MANUFACTURED SUCH THAT A COVER MANUFACTURED BY ANY ONE FOUNDRY WILL FIT INTERCHANGEABLY INTO A FRAME MANUFACTURED BY ANOTHER FOUNDRY AND STILL MEET ALLOWABLE CLEARANCES AND NON-ROCKING REQUIREMENTS. THIS WILL REQUIRE MANUFACTURING OF THE MATCHING FACES ON THE COVER AND THE FRAME TO CLOSE TOLERANCES.
4. THE OUTSIDE CIRCUMFERENCE OF THE VERTICAL FACE OF THE COVER AND THE INSIDE CIRCUMFERENCE OF THE VERTICAL FACE IN THE FRAME RECESS SHALL BE MANUFACTURED TO TOLERANCES SUCH THAT THE CLEARANCE BETWEEN THE COVER AND FRAME WILL NOT EXCEED 1/8" AT ANY POINT AROUND THE CIRCUMFERENCE OF THE COVER. THE SEATING SURFACES BETWEEN THE COVER AND FRAME SHALL BE MACHINED SUCH THAT THESE SURFACES SHALL MAKE FULL CONTACT FOR THEIR FULL CIRCUMFERENCE TO PRECLUDE THE COVER FROM ROCKING IN THE FRAME.
5. THE MANHOLE FRAME AND COVER SHALL BE MARKED WITH LETTERING INDICATING THE NAME OF THE MANUFACTURER AND THE YEAR WHEN THE COVER OR FRAME WAS CAST. THE COVER SHALL BE FURTHER IDENTIFIED WITH REGARDS TO OWNERSHIP USING LETTERS AT LEAST 1" IN HEIGHT. THIS IDENTIFICATION SHALL BE "CITY OF WICHITA SEWER DEPARTMENT". THE WORD DEPARTMENT MAY BE ABBREVIATED. THE TEXTURE OF THE TOP SURFACE OF THE COVER SHALL BE MANUFACTURED IN A CHECKERED PATTERN DESIGN AS INDICATED ON THE DRAWINGS. SMOOTH BLOCKOUTS SHALL BE UTILIZED TO HIGHLIGHT THE LETTERING ON THE COVER SURFACE. THE TOTAL AREA OF SMOOTH SURFACE BLOCKOUT SHALL NOT EXCEED THE AREA AS INDICATED ON THE DRAWING. POSITIONING OF SMOOTH BLOCKOUTS AND LETTERING MAY VARY FROM THAT SHOWN ON THE DETAILED DRAWING.

# SEWER APPURTENANCES DETAILS

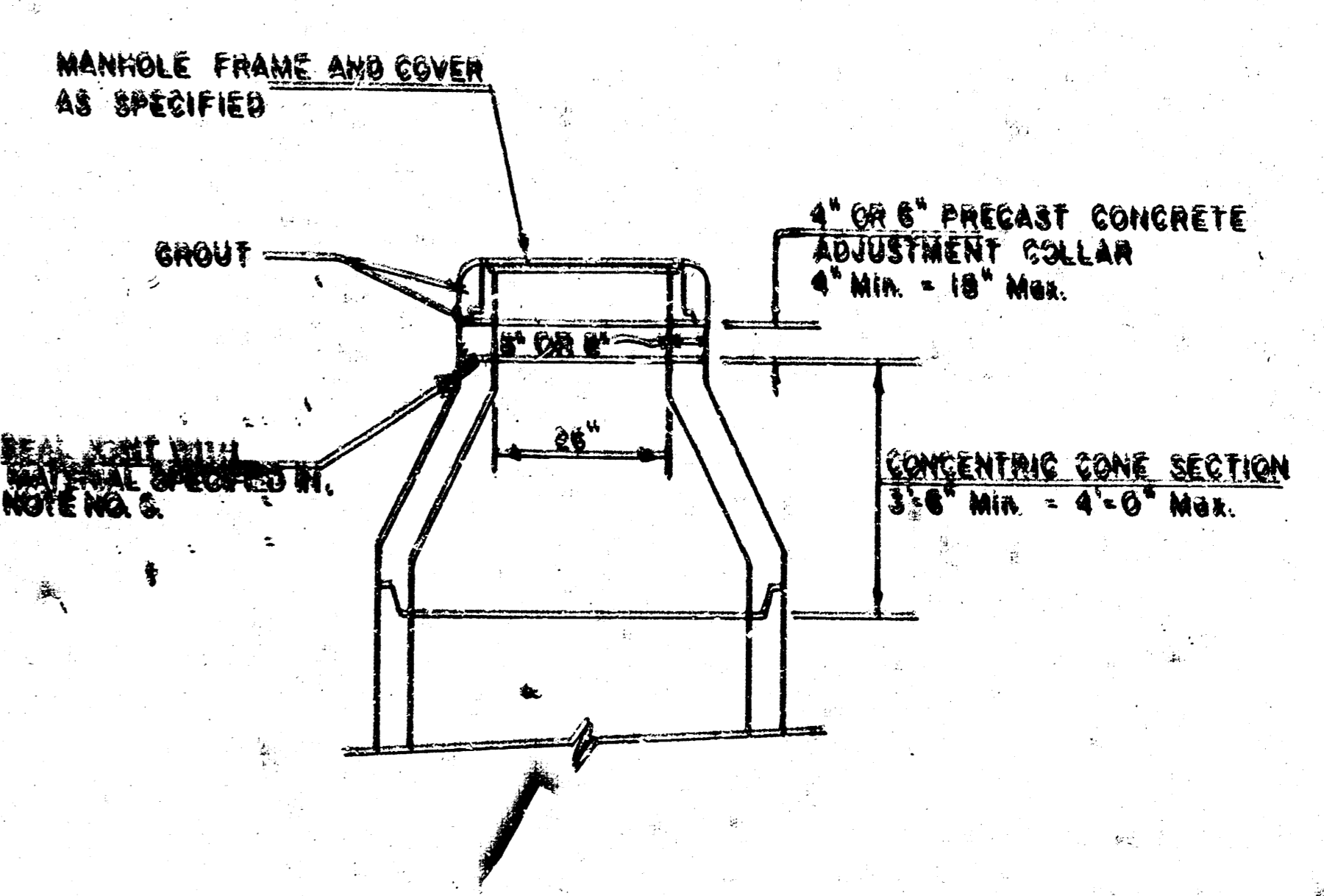
## ADOPTED AS STANDARD DESIGN

### BY

## CITY OF WICHITA

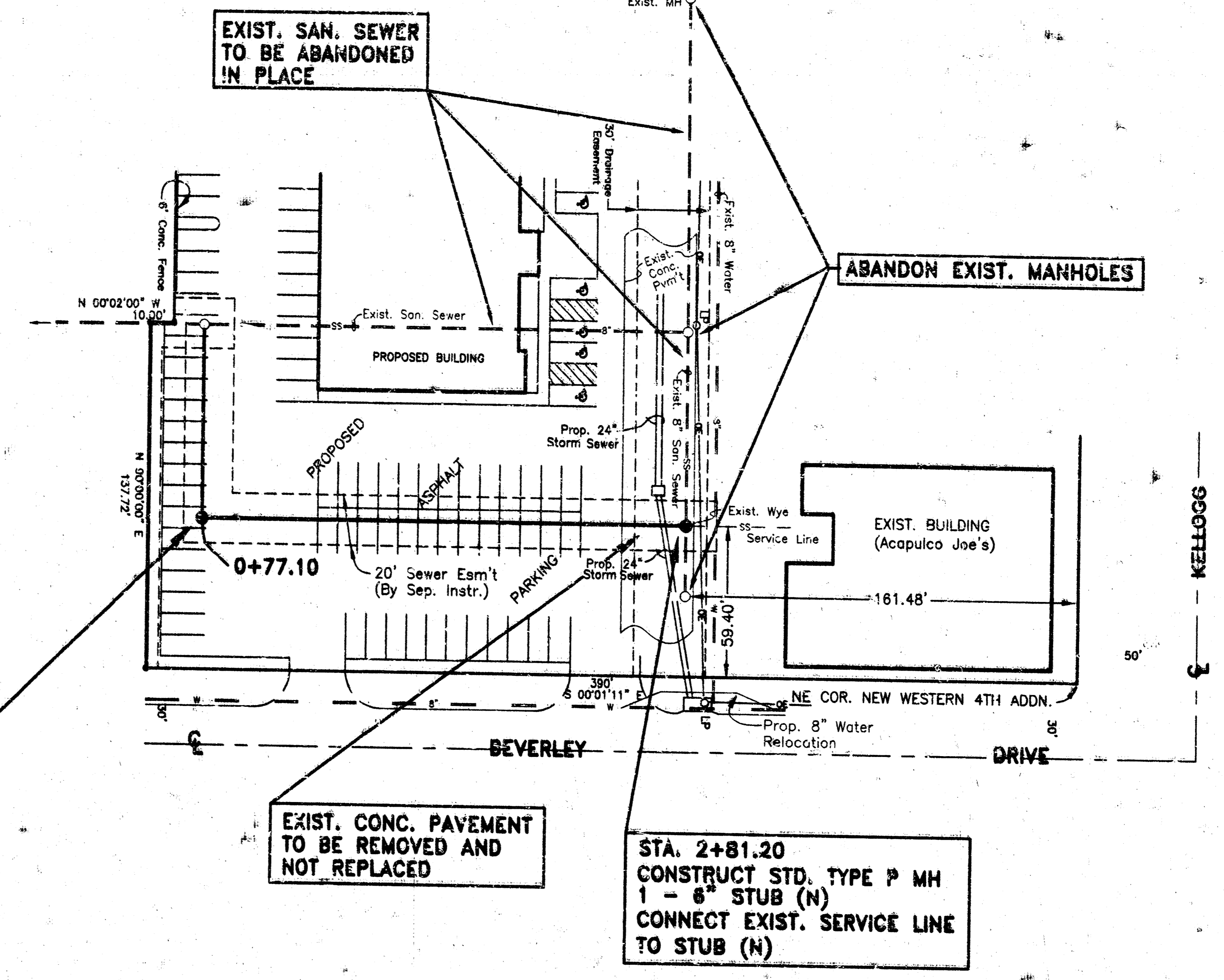
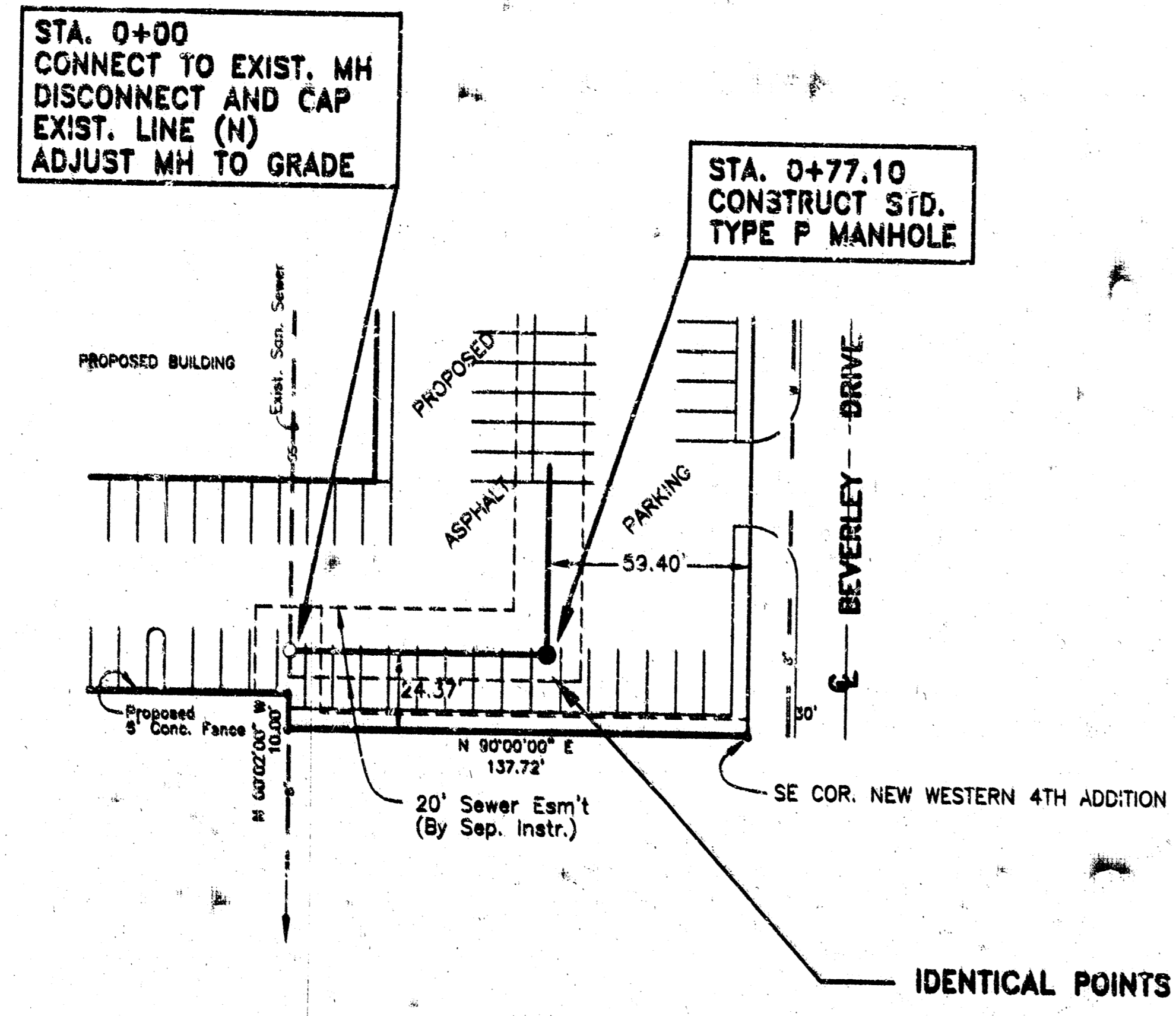


- GENERAL NOTES**  
**PRECAST MANHOLE NOTES**
1. ALL PRECAST CONCRETE MANHOLE SECTIONS SHALL CONFORM TO THE LATEST REVISION OF A.S.T.M. C118 AS MODIFIED BY THE SPECIFICATIONS.
  2. NON-SHRINK GROUT SHALL BE NON-METALLIC TYPE.
  3. APPROVED FLEXIBLE WATERSTOP BASKETS SHALL BE INSTALLED TO JOINT THE SEWER TO THE MANHOLE BELL OVER A 3" CONCRETE STOP. THE SEWER SHALL BE PROTECTED IN PLACE WITH 60# CHALKY GROUT. THE SEWER PIPE SHALL BE SUPPORTED WITH CONCRETE ENCASEMENT A MINIMUM OF 3" FROM THE MANHOLE BELL AND TO THE FIRST JOINT FOR V.C.P. SUCH THAT THE JOINT REMAINS FLEXIBLE.
  4. ALL INSIDE SURFACES OF THE CONCRETE MANHOLE WHICH WOULD BE EXPOSED TO SEWER GAS SHALL BE COATED WITH A CHALKY BARRIER, SERIES 60 W-100 EPOXYLINE, ANY THICKNESS OF 6 MILS (MIN.)
  5. EXTERIOR MANHOLE BELLS SHALL BE COATED WITH 1 COAT MOBILAR 654 BITUMINOUS COATING.
  6. JOINT SEALING COMPOUND SHALL BE KENT SEAL NO. 2 OR APPROVED EQUAL.
  7. PRECAST MANHOLES SHALL BE SET AT LEAST 4 INCHES INTO THE MANHOLE BASE.
  8. TOP OF MANHOLE FLOOR SLAB SHALL BE AT LEAST 3 INCHES BELOW THE FLOW LINE OF THE OUTLET PIPE TO INSURE SUFFICIENT MINIMUM THICKNESS OF SHAPED JOINT.
  9. LIFTING HOLES SHALL BE FILLED WITH NON-SHRINK GROUT AND THE INTERIOR SURFACE COATED AS SPECIFIED.
  10. MORTAR USED IN BRICKWORK CONSTRUCTION SHALL CONTAIN 8 BAGS OF PORTLAND CEMENT PER CUBIC YARD. CONCRETE USED IN BRICKWORK SHALL CONFORM TO THE REQUIREMENTS OF CONCRETE FOR CONCRETE PAVING CONSTRUCTION AS SPECIFIED IN THE CITY STANDARD PAVING SPECIFICATIONS. JOINTS IN CONCRETE PAVING SHALL BE SET IN THE MANHOLE BELL AS SHOWN ON THE DRAWING. WHEN MANHOLES ARE CONSTRUCTED IN UNPAVED AREAS, MANHOLES CONSTRUCTED WHERE PIPE SIZES ARE SMALLER THAN 18" SHALL BE SET ON A 4" OR 6" PRECAST CONCRETE ADJUSTMENT COLLAR. MANHOLES CONSTRUCTED WHERE PIPE SIZES ARE 18" OR LARGER SHALL BE SET ON A 4" OR 6" PRECAST CONCRETE ADJUSTMENT COLLAR. THE COLLAR SHALL BE SET ON A 4" OR 6" PRECAST CONCRETE ADJUSTMENT COLLAR. THE COLLAR SHALL BE SET ON A 4" OR 6" PRECAST CONCRETE ADJUSTMENT COLLAR.
  11. REINFORCING STEEL SHALL BE INSTALLED IN THE MANHOLE BASES AND EXTERIOR BELLS OF ALL MANHOLES. AS DESCRIBED IN THE DRAWING. THE MANHOLE BASE REINFORCEMENT SHALL BE PLACED AT LEAST 1" ABOVE THE BOTTOM OF THE MANHOLE BASE. ALL COSTS FOR THE UNIT PRICE BID FOR THE MANHOLE.
  12. OPENINGS SHALL BE CUT INTO THE MANHOLE WALL WHEN OUTSIDE DROPS EXIST. THE MANHOLE SHALL BE REINFORCED WITH STEEL. THE REINFORCEMENT SHALL BE INSTALLED IN THE MANHOLE WALL AND SHALL BE SET WITH AN EXTERIOR FINISH. THE REINFORCEMENT SHALL BE SET WITH AN EXTERIOR FINISH. THE REINFORCEMENT SHALL BE SET WITH AN EXTERIOR FINISH.
  13. THE FLOORS OF ALL MANHOLES SHALL BE SHAPED WITH FLOW CHANNELS WHICH SHALL BE SHAPED TO BE SET WITH AN EXTERIOR FINISH. THE FLOORS OF ALL MANHOLES SHALL BE SHAPED WITH FLOW CHANNELS WHICH SHALL BE SHAPED TO BE SET WITH AN EXTERIOR FINISH.
  14. PIPES INSTALLED WITHIN THE EXCAVATION MADE FOR THE MANHOLE SHALL BE SET ON A 4" OR 6" PRECAST CONCRETE ADJUSTMENT COLLAR. THE COLLAR SHALL BE SET ON A 4" OR 6" PRECAST CONCRETE ADJUSTMENT COLLAR.
  15. MANHOLE COVER CASTINGS AND MANHOLE FRAME CASTINGS SHALL CONFORM TO THE REQUIREMENTS AS INDICATED IN THE STANDARD SPECIFICATIONS AND AS SHOWN IN THE STANDARD DETAIL DRAWING.
  16. THE VERTICAL FREE FALL DROP INSIDE MANHOLES SHALL NOT EXCEED 2'. THE SLOPE OF INLETTING PIPES SHALL NEVER BE SET LOWER THAN THE CROWN OF THE OUTLETTING PIPE.
  17. STANDARD MANHOLES AND STANDARD OUTSIDE DROP MANHOLES SHALL BE BUILT WITH 6" MIN. CONCRETE ENCASEMENT OUTSIDE OF BELLS. ALL MANHOLE DIAMETERS SHALL BE 4" UNLESS INDICATED OTHERWISE.
  18. A BRICK MASONRY COLLAR SHALL BE INSTALLED BETWEEN THE CAST IRON FRAME AND THE CONCRETE BELL. THE COLLAR SHALL BE SET ON A 4" OR 6" PRECAST CONCRETE ADJUSTMENT COLLAR. THE COLLAR SHALL BE SET ON A 4" OR 6" PRECAST CONCRETE ADJUSTMENT COLLAR.

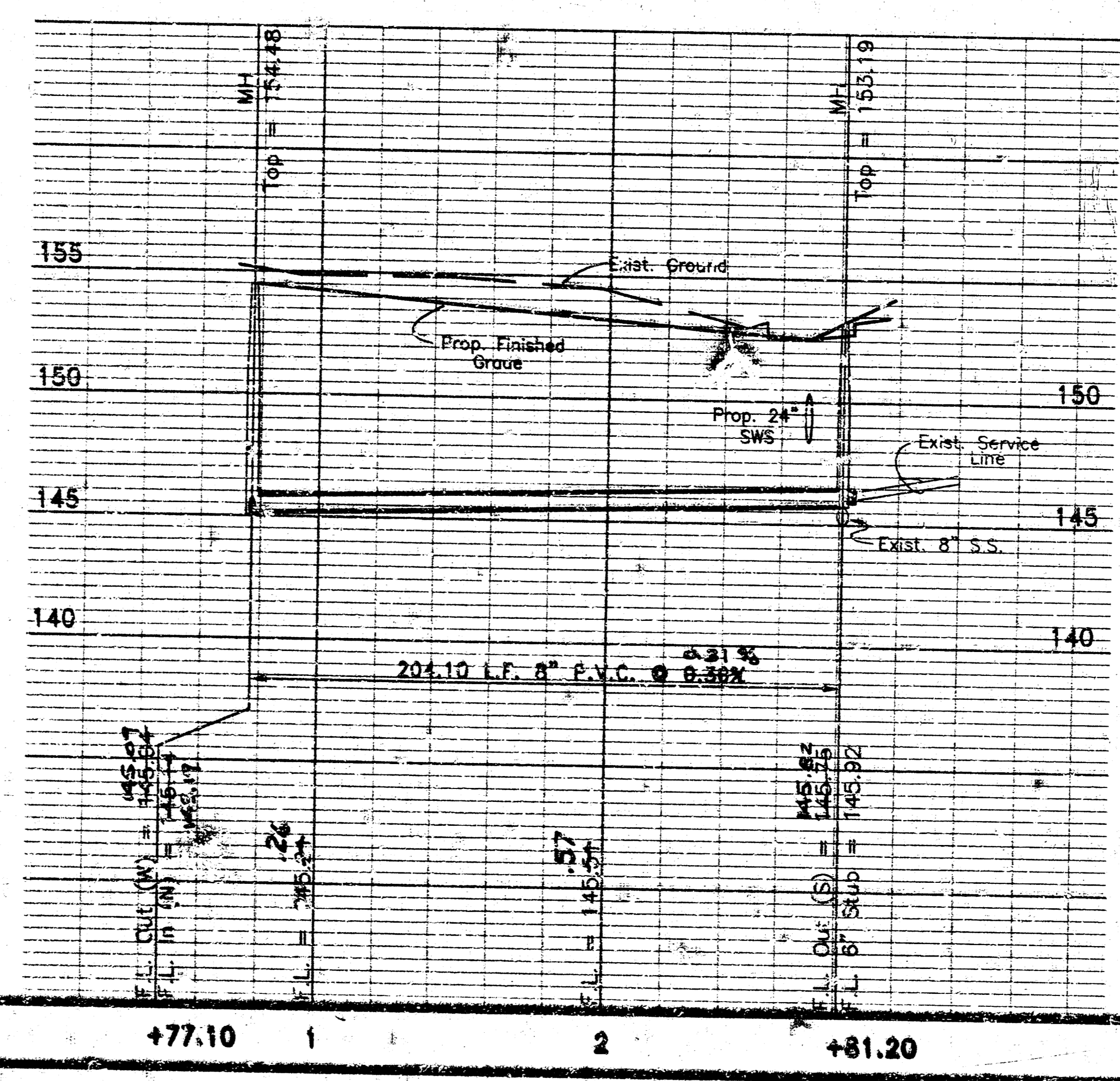
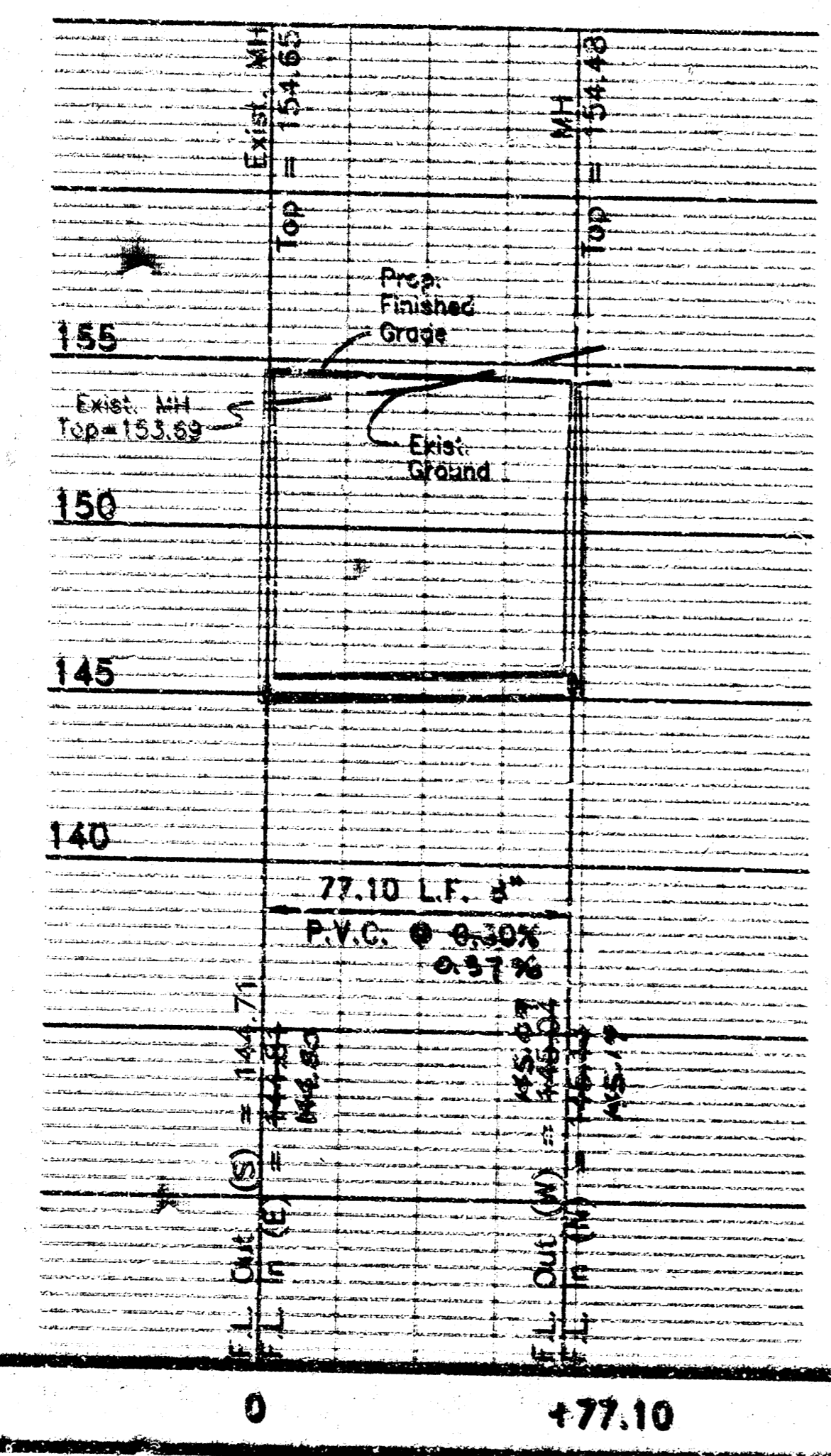


**ALTERNATE CONSTRUCTION  
IN UNPAVED AREAS**

REVISED NOV. 1963  
NOTE NO. 16 REVISED JAN. 1991  
Revised 3-21-89  
Revised 8-10-88  
Revised June 12, 1992



1" = 40' Horiz.  
 1" = 5' Vert.



**NOTE:** PRIOR TO CONSTRUCTION OF 8" SAN. SEWER, CONTRACTOR SHALL CONFIRM LOCATION OF EXIST. WYE AND MAKE ANY FIELD ADJUSTMENTS AS NECESSARY FOR LOCATION.

**SANITARY SEWER PLAN & PROFILE**  
**MOHRING & ASSOCIATES**  
 CONSULTING ENGINEERS - SURVEYORS  
 433 S. HYDRAULIC WICHITA, KS.  
 (316) 263-8291  
 PRIVATE PROJ. NO. 846PPS / INDEX NO. 607861  
 DATE: JULY 1996      SHEET 5

# NEW WESTERN 4TH ADDITION

WICHITA, SEDGWICK COUNTY, KANSAS

State of Kansas) SS We, Baughman Company, P.A., Surveyors in  
Sedgwick County) SS aforesaid County and State do hereby certify that we have surveyed  
and platted "NEW WESTERN 4TH ADDITION", Wichita, Sedgwick County,  
Kansas and that the accompanying plat is a true and correct exhibit  
of the property surveyed, described as and being a replat of Lot 1, New  
Western 3rd Addition, Wichita, Sedgwick County, Kansas, and a portion  
of Sylvan Lane, part of Block 3, Beverley Manor, Sedgwick County,  
Kansas, part of Reserve "A", Cain and Smith's Replat of a part  
of Block 3 in Beverley Manor, Sedgwick County, Kansas, and a part  
of Lot 10, Replat of a portion of Block Three of Beverley Manor  
to Wichita, Sedgwick County, Kansas further described as Commencing  
at the SE. Corner of Lot 10 in said Replat of a portion of Block Three  
of Beverley Manor, Wichita, Sedgwick County, Kansas; thence north  
along the east line of said Lot 10, 10 feet for a point of beginning;  
thence west parallel with the south line of said Lot 10, and  
extended west to a point on the centerline of a 40 foot drainage  
easement as recorded in Misc. Book 167, Page 134 and in  
Misc. Book 167, Page 132; thence northwesterly along the centerline  
of said drainage easement to the S.W. Corner of Lot 1, New Western  
3rd Addition, Wichita, Kansas; thence east along the south line of  
said Lot 1, 240.51 feet to a deflection corner in the south line of  
said Lot 1; thence south 50 feet to the point of beginning.

All being situated in the NW1/4 of Sec. 25, Twp. 27-S,  
R-1-E of the 6th P.M., Sedgwick County, Kansas.

Existing public dedications and easements being vacated  
by virtue of K.S.A. 12-512(b).

Baughman Company, P.A.

*Steven L. Willett*  
Steven L. Willett  
Surveyor

Know all men by these presents that we,  
the undersigned have caused the land in the surveyors certificate to be  
platted into a lot, to be known as "NEW WESTERN 4TH ADDITION", Wichita,  
Sedgwick County, Kansas. The utility easements are hereby granted as  
indicated for the construction and maintenance of all public utilities.  
The drainage and utility easement is hereby granted as indicated for  
drainage purposes and for the construction and maintenance of all public  
utilities. All abutters rights of access to or from Kellogg Street over and  
across the north line of Lot 1 are hereby granted to the City of Wichita,  
Kansas provided, however, that Lot 1 shall have access to Kellogg Street  
at two locations as shall be determined by the City Engineer of the City  
of Wichita, Kansas. All abutters rights of access to or from Beverley  
Drive over and across the east line of Lot 1 and to or from Sylvan  
Lane over and across the south line of Lot 1 are hereby granted to  
the City of Wichita, Kansas provided, however, that Lot 1 shall have  
access to Beverley Drive at two locations over all except the south 50 feet  
of the east line of Lot 1 as shall be determined by the City Engineer of  
the City of Wichita, Kansas. No new building shall be constructed below a  
minimum building pad elevation of 1343.0 Mean Sea Level (155.60 City Datum).  
The roadway shall be the responsibility of the owner of Lot 1, until such  
time as the appropriate governing body elects to assume the responsibility  
for the maintenance and improvement of the drainage. No building shall  
be constructed on or within said roadway; nor shall any fill, change of  
grade, creation of a channel or other work be carried on without the per-  
mission of said appropriate governing body; additional improvements and/or  
activities may be permitted within said roadway, such as landscaping, and  
parking is permitted within said roadway.

New Western L.C.

*Lindy Andeel*  
Lindy Andeel  
Member

State of Kansas) SS The foregoing instrument acknowledged be-  
fore me, this 15th day of August, 1995, by Lindy Andeel,  
Member, New Western L.C., on behalf of the company.  
*James E. Johnson*  
Notary Public

State of Kansas) SS The foregoing instrument acknowledged be-  
fore me, this 15th day of August, 1995, by Lindy Andeel,  
a single person.  
*James E. Johnson*  
Notary Public

We, the undersigned, holders of mortgages  
on the above described property do hereby consent to the plat  
of "NEW WESTERN 4TH ADDITION", Wichita, Sedgwick County, Kansas.  
Southwest National Bank of Wichita

*John W. Long*  
John W. Long  
VICE-PRESIDENT

State of Kansas) SS The foregoing instrument acknowledged be-  
fore me, this 15th day of August, 1995, by *John W. Long*  
VICE-PRESIDENT of Southwest National Bank of Wichita, on behalf of  
the bank.

*John W. Long*  
Notary Public

This plat of "NEW WESTERN 4TH ADDITION",  
Wichita, Sedgwick County, Kansas has been submitted to and  
approved by the Wichita-Sedgwick County Metropolitan Area Planning  
Commission, Wichita, Kansas.  
Dated this 23rd day of May, 1995.  
Wichita-Sedgwick County Metropolitan Area Planning Commission

*John M. McKay*  
John M. McKay  
Chairman

*Marvin S. Raut*  
Marvin S. Raut  
Secretary

This plat approved and all dedications  
shown hereon accepted by the City Council of the City of Wichita,  
Kansas, this 29th day of August, 1995.

*Bob Knight*  
Bob Knight  
Mayor

*Pat Burnett*  
Pat Burnett  
Deputy City Clerk

Entered on transfer record this 19th day  
of September, 1995.  
*James E. Johnson*  
County Clerk

State of Kansas) SS This is to certify that this plat has been  
filed for record in the office of the Register of Deeds, this 19th day  
of September, 1995, at 3 o'clock P.M. and is duly recorded.

*Pat Keltner*  
Pat Keltner  
Register of Deeds

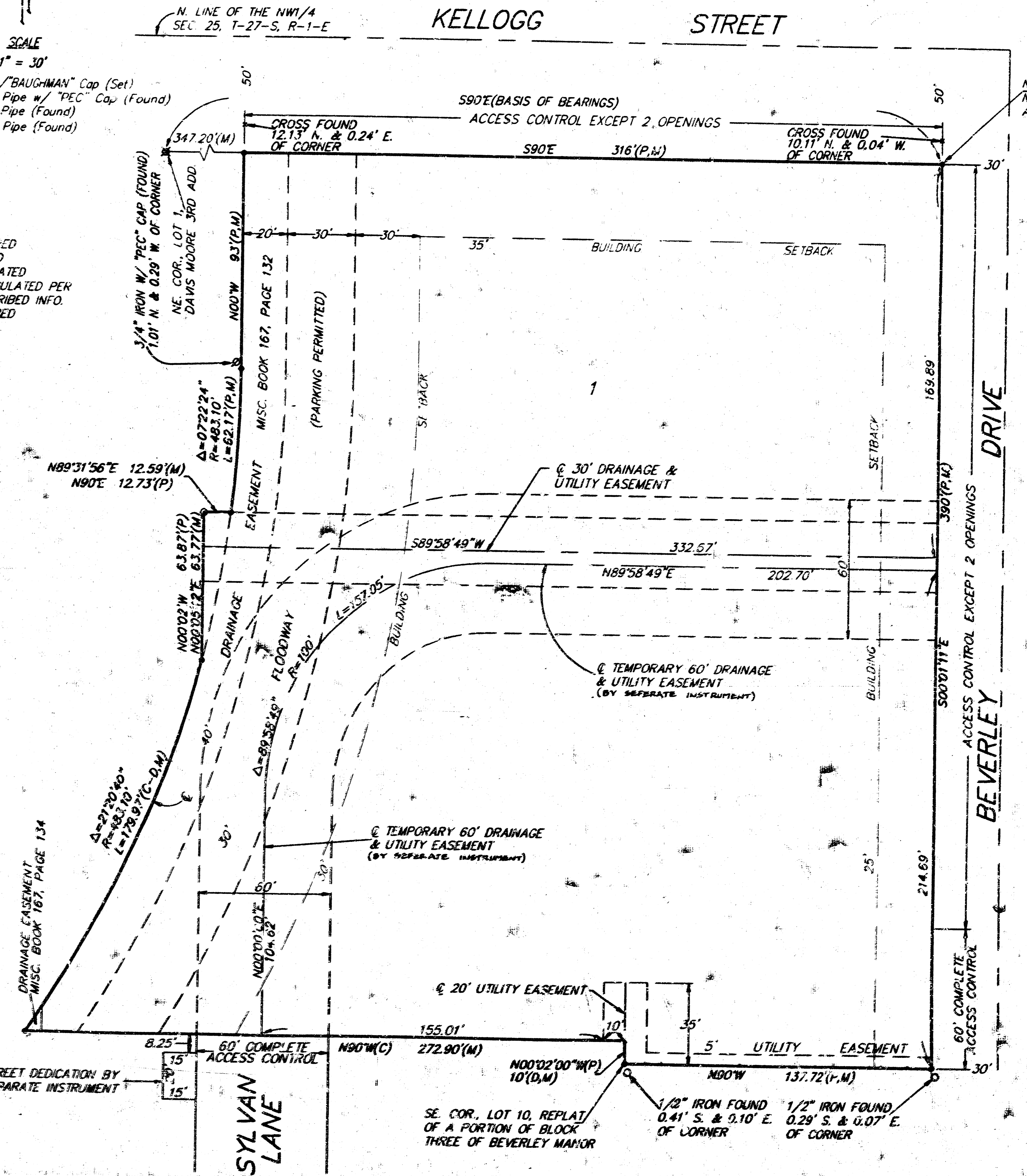
*Ed Resa*  
Ed Resa  
Deputy



SCALE  
1" = 30'

- = #4 Rebar w/ "BAUGHMAN" Cap (Set)
- Ø = 3/4" Iron Pipe w/ "PEC" Cap (Found)
- = 1/2" Iron Pipe (Found)
- = 3/4" Iron Pipe (Found)

- (M) = MEASURED
- (P) = PLATTED
- (C) = CALCULATED
- (C-D) = CALCULATED PER DESCRIBED INFO.
- (D) = DESCRIBED



MINIMUM BUILDING PAD ELEVATIONS FOR LOWEST OPENING OF STRUCTURE		
Lot	Elevation	
	City Datum	M.S.L.
1	155.60	1343.00

BENCH MARK: City disc located on the  
N.E. Corner of RCBC  
at Pinecrest & Orme  
Elev. = 151.61 (City Datum)  
1339.01 (M.S.L.)