

SANITARY SEWER EXTENSIONS

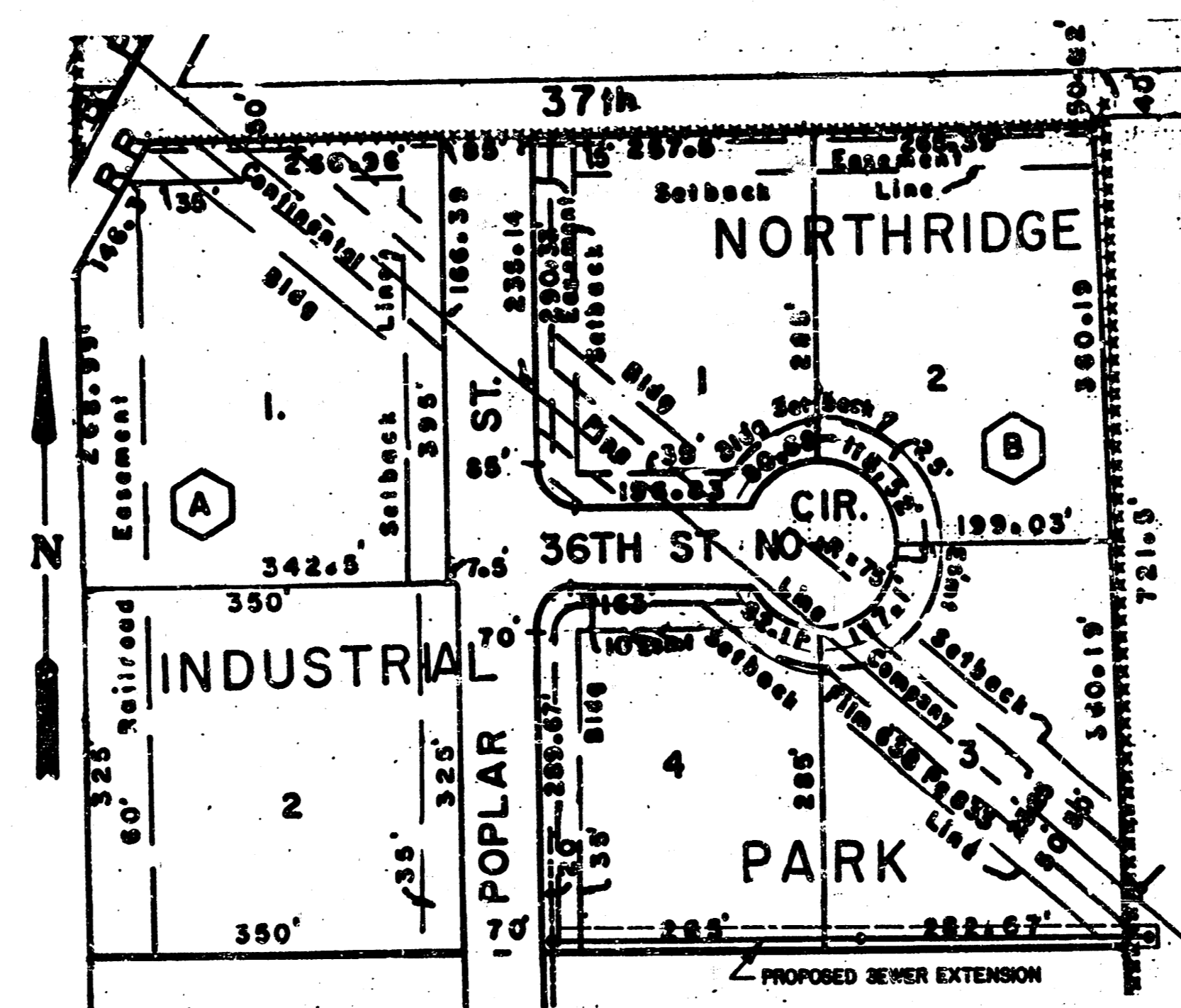
TO SERVE LOTS 3 and 4, BLOCK B, NORTHRIDGE INDUSTRIAL PARK
WICHITA, SEDGWICK COUNTY, KANSAS

AND

UNPLATTED KWCH-TV PROPERTY LOCATED IN THE
NE/4 SEC. 34, T26S, R1E
SEDGWICK COUNTY, KANSAS

CITY OF WICHITA PRIVATE PROJECT

USER CODE 226 PPS
INDEX CODE 607861
1989



VICINITY MAP

BY CITY ENGINEER OF WICHITA

Sanitary Sewers *VRH 11/9/89*

Storm Sewers _____

Driveway Approaches _____

Water Mains _____

Paving _____

INSPECTION AND TESTING FOR THIS PROJECT IS FURTHER PROVIDED BY A LICENSED CONSULTING ENGINEER FROM UNDER CONTRACT WITH THE CITY OF WICHITA. THE ABOVE CONTRACTOR SHALL BE RESPONSIBLE FOR THE DESIGN AND CONSTRUCTION OF ALL SANITARY SEWER, STORM SEWER, DRIVEWAY APPROACHES, WATER MAINS, AND PAVING. THE CITY OF WICHITA SHALL NOT BE RESPONSIBLE FOR THE DESIGN OR CONSTRUCTION OF ANY SANITARY SEWER, STORM SEWER, DRIVEWAY APPROACHES, WATER MAINS, OR PAVING. THE CITY OF WICHITA SHALL NOT BE RESPONSIBLE FOR THE DESIGN OR CONSTRUCTION OF ANY SANITARY SEWER, STORM SEWER, DRIVEWAY APPROACHES, WATER MAINS, OR PAVING.

*Books
2-90
RPL*



Dennis & Goodness Engineers
2180 WEST 21ST STREET
WICHITA, KANSAS 67203
(316) 638-0283

REVISION	DRAWN BY	CHECKED BY	DESIGNED BY	PROJECT

CUSTOMER

SCALE	PROJECT NO.
DATE	SHEET 1 OF 2

FILMED FROM THE BEST AVAILABLE COPY

