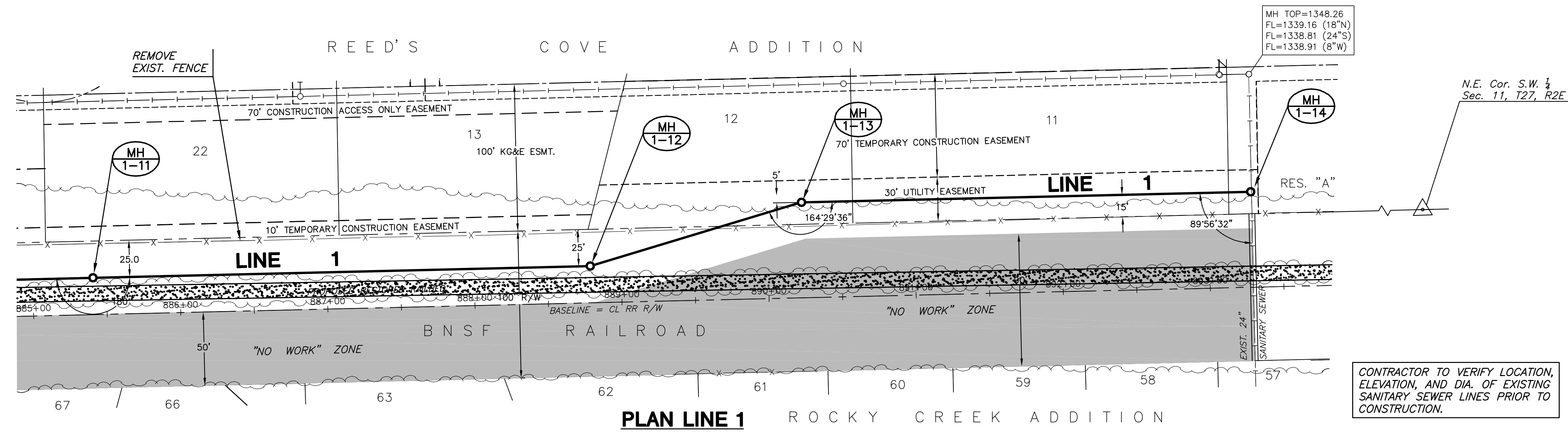
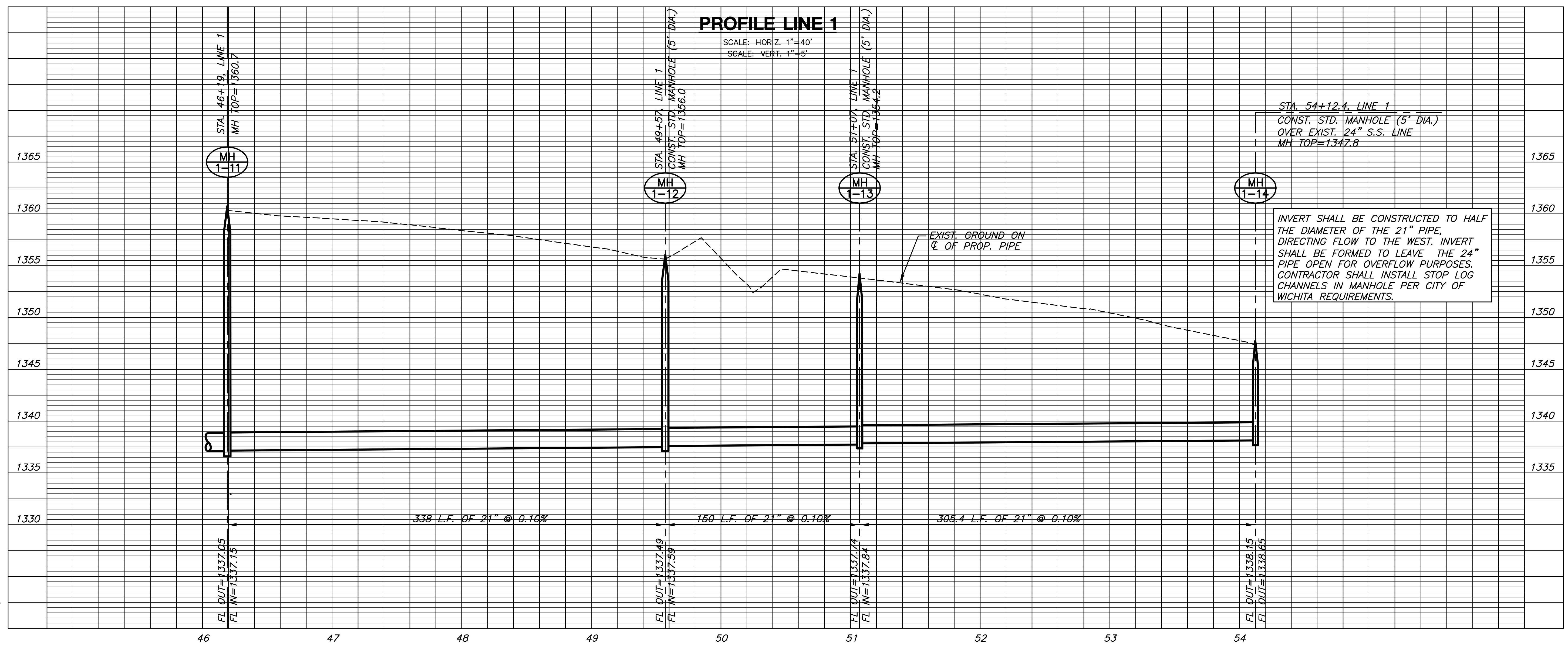


**ROCKY CREEK
RELIEF SANITARY SEWER**



CONTRACTOR TO VERIFY LOCATION, ELEVATION, AND DIA. OF EXISTING SANITARY SEWER LINES PRIOR TO CONSTRUCTION.

SCALE: 1" = 40'
0 20 40 80
See Sheet 12 for Railbed Rock Replacement



STA. 54+12.4, LINE 1
CONST. STD. MANHOLE (5' DIA.)
OVER EXIST. 24" S.S. LINE
MH TOP=1347.8

INVERT SHALL BE CONSTRUCTED TO HALF THE DIAMETER OF THE 21" PIPE, DIRECTING FLOW TO THE WEST. INVERT SHALL BE FORMED TO LEAVE THE 24" PIPE OPEN FOR OVERFLOW PURPOSES. CONTRACTOR SHALL INSTALL STOP LOG CHANNELS IN MANHOLE PER CITY OF WICHITA REQUIREMENTS.

LINE 1
SHEET TITLE
468-84218
PROJECT NUMBER

DFL
DESIGN BY
KKL
DRAWN BY
GAR
CHECKED BY

ISSUED
June 2008
REVISED

SHEET NO.
9 of 42

PLOTTED: Wednesday, June 04, 2008 @ 02:43PM
J:\CIVIL\06693\WORK\SAN\06693_BB.DWG