

GRAPHIC SCALE

(IN FEET)
1 inch = 20 ft.

UTILITY LEGEND

- = Fire Hydrant
- = Water Meter
- = Water Valve
- = Gas Meter
- = Gas Valve
- = Telephone Riser
- = Mailbox
- = Flag Pole
- = SS Manhole
- = SWS Manhole
- = Sign
- = Misc. Post
- = Guy Anchor
- = Power Pole
- = Light Pole
- = Deciduous Tree or Shrub
- = Existing Fence
- = Right of Way Line
- = Underground Telephone
- = Underground Electric
- = Overhead Electric
- = Water Line
- = Sanitary Sewer
- = Gas Line
- = Cable TV or Fiber Optic

- Proposed 5" A.C. Pavement on 5" Crushed Rock Base
- Proposed Concrete Curb & Gutter
- Exist. Road Gravel To Be Removed
- Propose Pavement Removal

- BENCHMARKS:**
- SBM #1 - "c" T/C N. Side St. Louis ±50' E. & ±15' N. of CL Intersection St. Louis Ave. & Baehr St.
 - SBM #2 - 1/2" Capped Rebar w/Savoy Ruggles & Bohm Cap ±8" SW Corner Intersection Newell Ave. & Baehr St.
 - SBM #3 - "c" T/C N. Side Handicap Ramp SW Corner Intersection Central Ave. & Baehr St.

UTILITIES SHOWN REPRESENT THE BEST INFORMATION AVAILABLE FOR DESIGN. ADDITIONAL UTILITIES MAY BE PRESENT ON THIS PROJECT. THE CONTRACTOR SHALL BE RESPONSIBLE FOR DETERMINING THE EXACT LOCATION, DEPTH AND SIZE OF ALL UNDERGROUND UTILITIES PRIOR TO CONSTRUCTION. THE CONTRACTOR SHALL BE LIABLE FOR ANY DAMAGE CAUSED BY THE FAILURE TO DO SO.

WM1 - Water Meter

Water Meter Box Adjustment Table

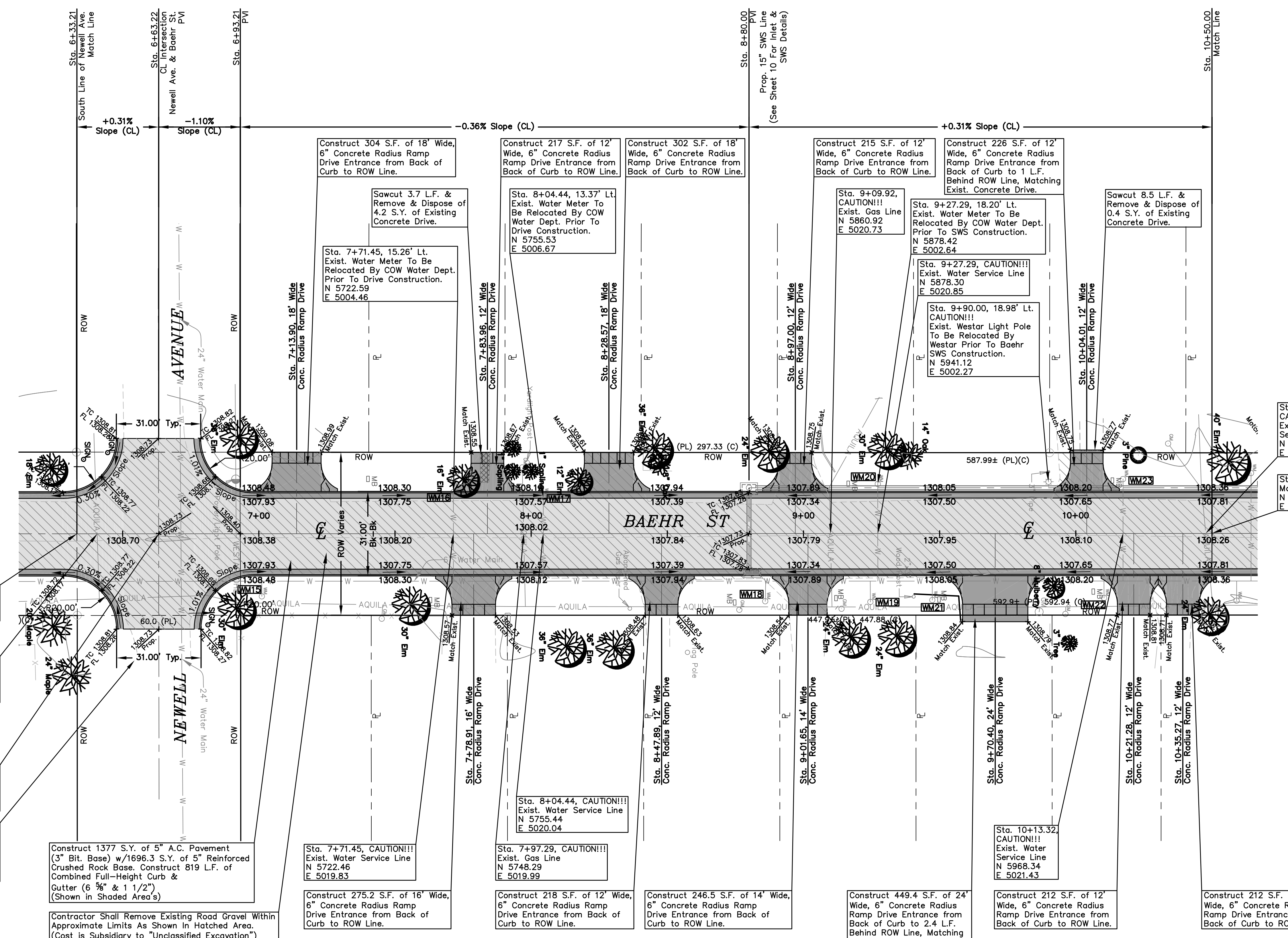
WM #	BL Station (CL Baehr Street)	Feet Rt./Lt.	Existing Elevation	Proposed Elevation
15	7+01.11	22.98 Rt.	1308.29	1308.65
16	7+77.45	15.25 Lt.	1308.49	Relocate
17	8+04.44	13.37 Lt.	1308.46	Relocate
18	8+85.95	24.85 Rt.	1308.52	1308.04
19	9+24.55	25.11 Rt.	1308.29	1308.17
20	9+27.29	18.20 Lt.	1308.65	Relocate
21	9+47.31	24.41 Rt.	1308.02	1308.23
22	10+10.37	23.69 Rt.	1308.76	1308.40
23	10+13.32	19.96 Lt.	1308.51	1308.34

SEE GENERAL NOTE 15 ON TITLE SHEET FOR MAILBOX RELOCATIONS.

General Note: The Contractor Shall NOT Remove Any Trees Within Baehr St. ROW Unless Approved By The Engineer. Contractor Shall Exercise Care During Construction of Baehr St. So Not To Damage Any Trees.

PAVING PLAN FOR
BAEHR STREET
WICHITA, SEDGWICK COUNTY, KANSAS
CED PROJ. NO.: 20071583
CERTIFIED ENGINEERING DESIGN, P.A.
810 WEST DOUGLAS, SUITE C
WICHITA, KANSAS 67203
PH.(316)262-8808 FAX.(316)262-1669

DESIGNED: HDF	SCALE: 1"=20'	SHEET 7
DRAWN: JDT	DATE: 10-07	TOTAL 24
CHECKED: HDF	CED FILE: Baehr St-Base	



Contractor Shall Grade 5 L.F. of Exist. Gravel Road to Match Proposed East & West Street Returns for Baehr Street. (Subsidiary to "Unclassified Excavation")

Construct 1377 S.Y. of 5" A.C. Pavement (3" Bit. Base) w/1696.3 S.Y. of 5" Reinforced Crushed Rock Base. Construct 819 L.F. of Combined Full-Height Curb & Gutter (6 3/8" & 1 1/2") (Shown in Shaded Area's)

Contractor Shall Remove Existing Road Gravel Within Approximate Limits As Shown in Hatched Area. (Cost is Subsidiary to "Unclassified Excavation")

Sta. 7+71.45, CAUTION!!!
Exist. Water Service Line
N 5722.46
E 5019.83

Construct 275.2 S.F. of 16" Wide, 6" Concrete Radius Ramp Drive Entrance from Back of Curb to ROW Line.

Sta. 7+97.29, CAUTION!!!
Exist. Gas Line
N 5748.29
E 5019.99

Construct 218 S.F. of 12" Wide, 6" Concrete Radius Ramp Drive Entrance from Back of Curb to ROW Line.

Construct 246.5 S.F. of 14" Wide, 6" Concrete Radius Ramp Drive Entrance from Back of Curb to ROW Line.

Construct 449.4 S.F. of 24" Wide, 6" Concrete Radius Ramp Drive Entrance from Back of Curb to 2.4 L.F. Behind ROW Line, Matching Exist. Concrete Drive

Sta. 10+13.32, CAUTION!!!
Exist. Water Service Line
N 5968.34
E 5021.43

Construct 212 S.F. of 12" Wide, 6" Concrete Radius Ramp Drive Entrance from Back of Curb to ROW Line.

Construct 212 S.F. of 12" Wide, 6" Concrete Radius Ramp Drive Entrance from Back of Curb to ROW Line.

General Note: All Radius Dimensions Are To Face Of Curb.