

**BENCHMARK:**  
CITY OF WICHITA BENCHMARK  
AT THE NE CORNER OF  
ARKANSAS AND 29TH ST  
NORTH  
ELEV. = 1316.81 NGVD29

**WATER VALVE LOCATION TABLE**

VALVE NUMBER	STREET	BASELINE STATION	OFFSET DISTANCE	OFFSET DIRECTION
V1	Jeanette	0+21.67	24'	Rt.
V2	Jeanette	3+48.87	24'	Rt.
V3	Jeanette	3+68.87	24'	Rt.

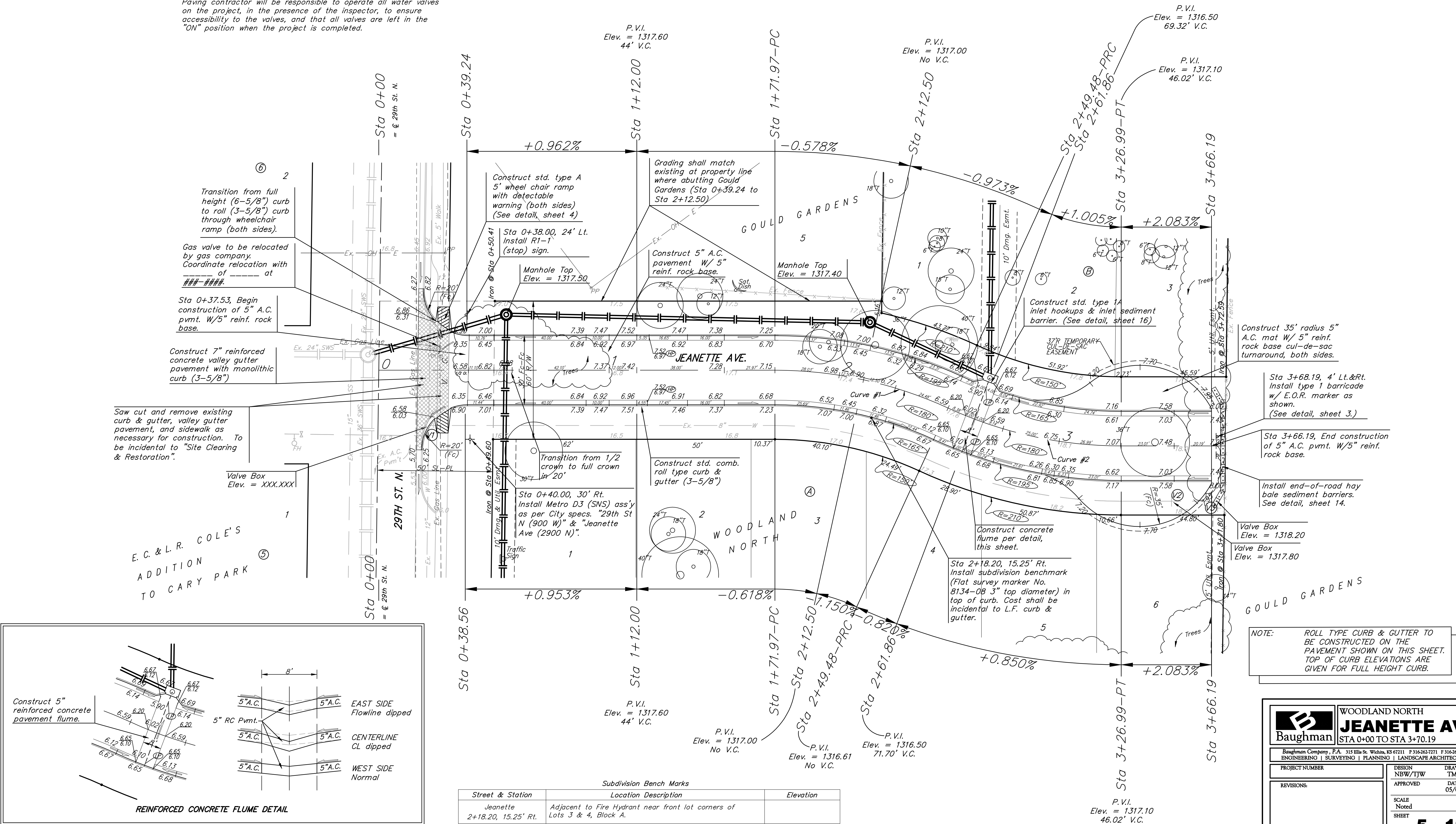
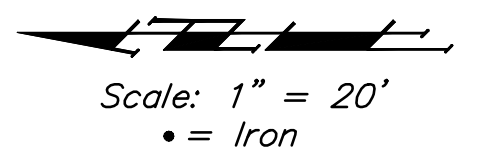
Paving contractor will be responsible to operate all water valves on the project, in the presence of the inspector, to ensure accessibility to the valves, and that all valves are left in the "ON" position when the project is completed.

Curve #1  
Curve Data Based on Centerline  
Rad. = 180' Delta = 24° 40' 24" Tangent = 39.37'  
Arc = 77.51' L.C. = 76.92' Def/Ft. = 9.54974 Min.

Station	Arc	FACE CHORD LENGTHS		Defl.	T. Defl.
		8' Lt.	8' Rt.		
1+71.97	-	-	-	0'00"00"	0'00"00"
1+75.00	3.03'	3.42'	2.64'	0'28"56"	0'28"56"
2+00.00	25.00'	28.17'	21.79'	3'58"44"	4'27"41"
2+25.00	25.00'	28.17'	21.79'	3'58"44"	8'26"25"
2+49.48	24.48'	27.59'	21.34'	3'53"46"	12'20"12"

Curve #2  
Curve Data Based on Centerline  
Rad. = 180' Delta = 24° 40' 24" Tangent = 39.37'  
Arc = 77.51' L.C. = 76.92' Def/Ft. = 9.54974 Min.

Station	Arc	FACE CHORD LENGTHS		Defl.	T. Defl.
		8' Lt.	8' Rt.		
2+49.48	-	-	-	0'00"00"	0'00"00"
2+75.00	25.52'	22.24'	28.76'	4'03"42"	4'03"42"
3+00.00	25.00'	21.79'	28.17'	3'58"44"	8'02"27"
3+25.00	25.00'	21.79'	28.17'	3'58"44"	12'01"12"
3+26.99	1.99'	1.74'	2.24'	0'19"00"	12'20"12"



Transition from full height (6-5/8") curb to roll (3-5/8") curb through wheelchair ramp (both sides).

Gas valve to be relocated by gas company. Coordinate relocation with ###-###-### at \_\_\_\_\_.

Sta 0+37.53, Begin construction of 5" A.C. pvmnt. W/5" reinf. rock base.

Construct 7" reinforced concrete valley gutter pavement with monolithic curb (3-5/8")

Saw cut and remove existing curb & gutter, valley gutter pavement, and sidewalk as necessary for construction. To be incidental to "Site Clearing & Restoration".

Valve Box Elev. = XXX.XXX

Construct std. type A 5' wheel chair ramp with detectable warning (both sides) (See detail, sheet 4)

Grading shall match existing at property line where abutting Gould Gardens (Sta 0+39.24 to Sta 2+12.50)

Sta 0+38.00, 24' Lt. Install RT-1 (stop) sign.

Manhole Top Elev. = 1317.50

Construct 5" A.C. pavement W/ 5" reinf. rock base.

Manhole Top Elev. = 1317.40

Construct std. type 1A inlet hookups & inlet sediment barrier. (See detail, sheet 16)

37" R TEMPORARY CUL-DE-SAC EASEMENT

Construct 35' radius 5" A.C. mat W/ 5" reinf. rock base cul-de-sac turnaround, both sides.

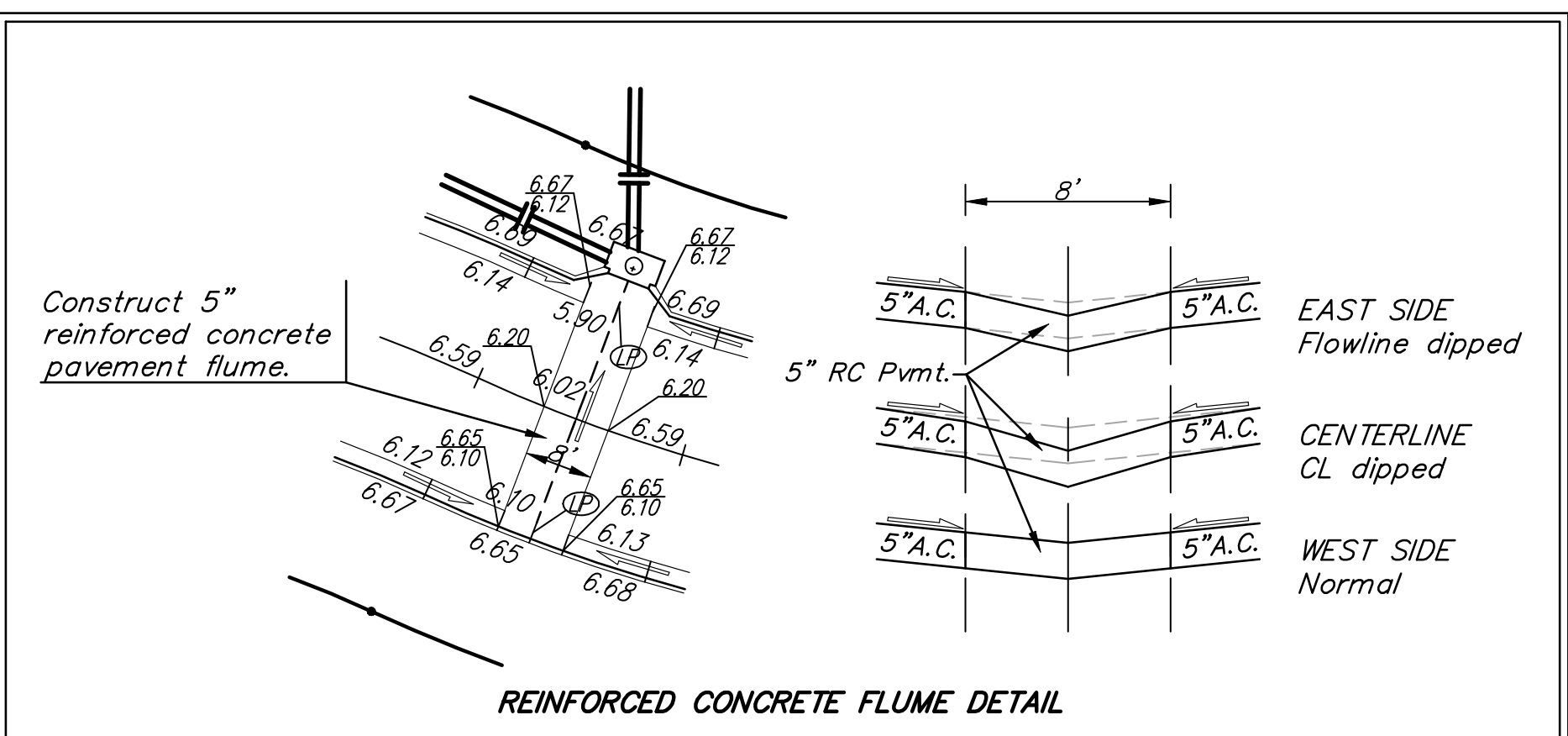
Sta 3+68.19, 4' Lt.&Rt. Install type 1 barricade w/ E.O.R. marker as shown. (See detail, sheet 3.)

Sta 3+66.19, End construction of 5" A.C. pvmnt. W/5" reinf. rock base.

Install end-of-road hay bale sediment barriers. See detail, sheet 14.

Valve Box Elev. = 1318.20

Valve Box Elev. = 1317.80



Subdivision Bench Marks

Street & Station	Location Description	Elevation
Jeanette 2+18.20, 15.25' Rt.	Adjacent to Fire Hydrant near front lot corners of Lots 3 & 4, Block A.	

NOTE: ROLL TYPE CURB & GUTTER TO BE CONSTRUCTED ON THE PAVEMENT SHOWN ON THIS SHEET. TOP OF CURB ELEVATIONS ARE GIVEN FOR FULL HEIGHT CURB.

**Baughman** WOODLAND NORTH  
**JEANETTE AVE.**  
STA 0+00 TO STA 3+70.19

Baughman Company, P.A. 315 Ellis St. Wichita, KS 67211 P 316-262-7771 F 316-262-0149  
ENGINEERING | SURVEYING | PLANNING | LANDSCAPE ARCHITECTURE

PROJECT NUMBER	DESIGN NBW/TJW	DRAWN TMS
REVISIONS:	APPROVED	DATE 05/08
	SCALE Noted	SHEET

5 OF 19

WoodlandNorth/Strl 08-02-E055