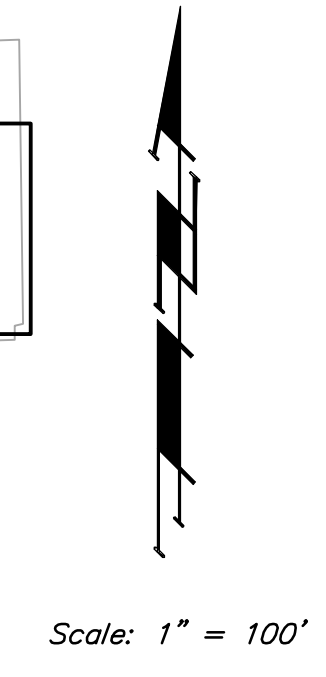
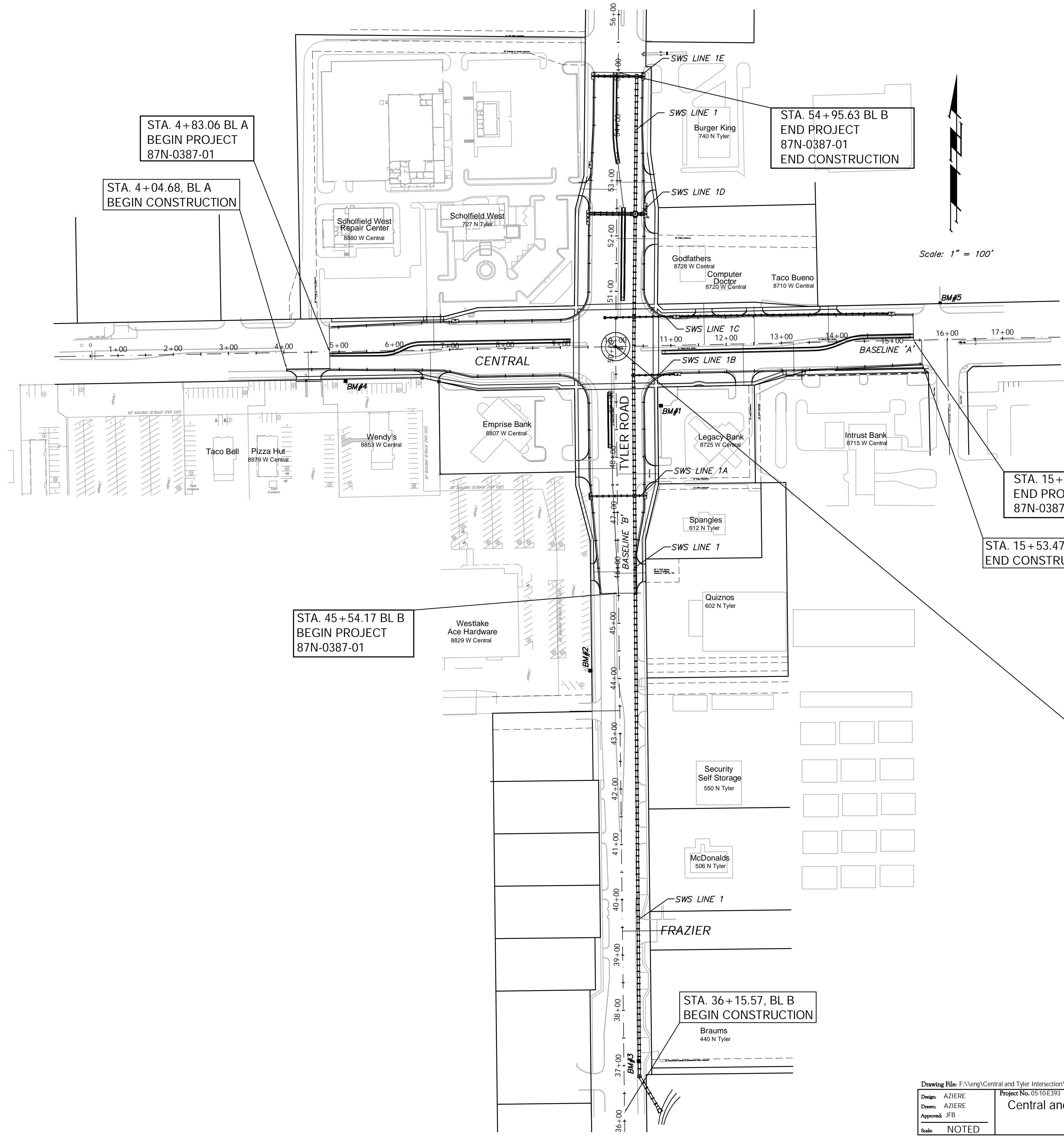
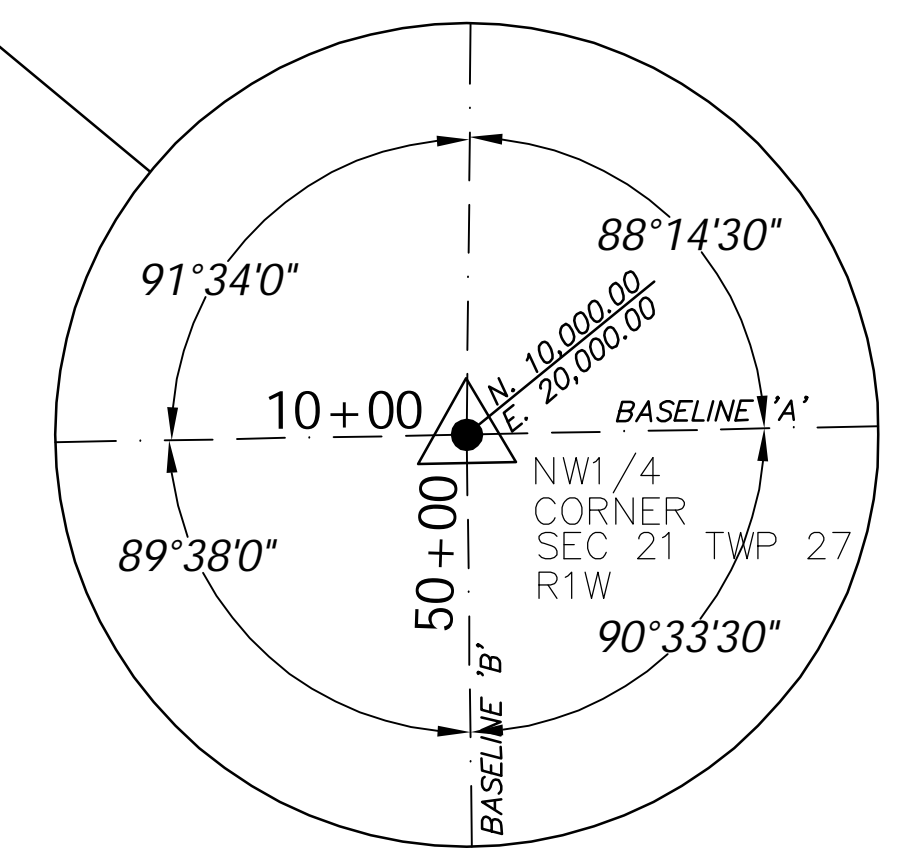


FHWA REGION NO.	STATE	PROJECT NO.	FISCAL YEAR	SHEET NO.	TOTAL SHEETS
7	KANSAS	87N-0378-01	2008	2	72



- BM #1- "□" Cut in the top of curb in the NW corner of the parking lot of Legacy Bank on the SE corner of Central and Tyler
Elev. = 1333.90
 - BM #2- "□" Cut in the sidewalk on the west side of the brick wall running along the west side of Tyler approx. 585' south of Central
Elev. = 1332.68
 - BM #3- RR Spike in the west face of a powerpole 25'± NW of the SW corner of Lot 1 Block C, Ty-Cen Addition
Elev. = 1333.29
 - BM #4- "□" Cut in the west TC of a flume south of the brick wall running along the south side of Central west of Tyler
Elev. = 1331.48
 - BM #5- "□" Cut in the top of curb of the east side of the 4th drive east of Tyler along the north side of Central
Elev. = 1334.97
 - BM #6- "□" Cut in the top of a catch basin 820'± north of Central and 45'± west of Tyler
Elev. = 1333.63
- *All Elevation in NGVD29 Datum*



Drawing File: F:\eng\Central and Tyler Intersection\Keysheet
 Design: AZIERE
 Drawn: AZIERE
 Approved: JFB
 Scale: NOTED

Project No. 05-10E393 CAPITAL IMPROVEMENT PROJECT
 Central and Tyler Intersection Improvements
 Key Sheet

Baughman Company, P.A.
 315 Ellis St. Wichita, KS 67211 P 316-262-7271 F 316-262-0149
 ENGINEERING | SURVEYING | PLANNING | LANDSCAPE ARCHITECTURE

MAY 2008
 SHEET 2 OF 72