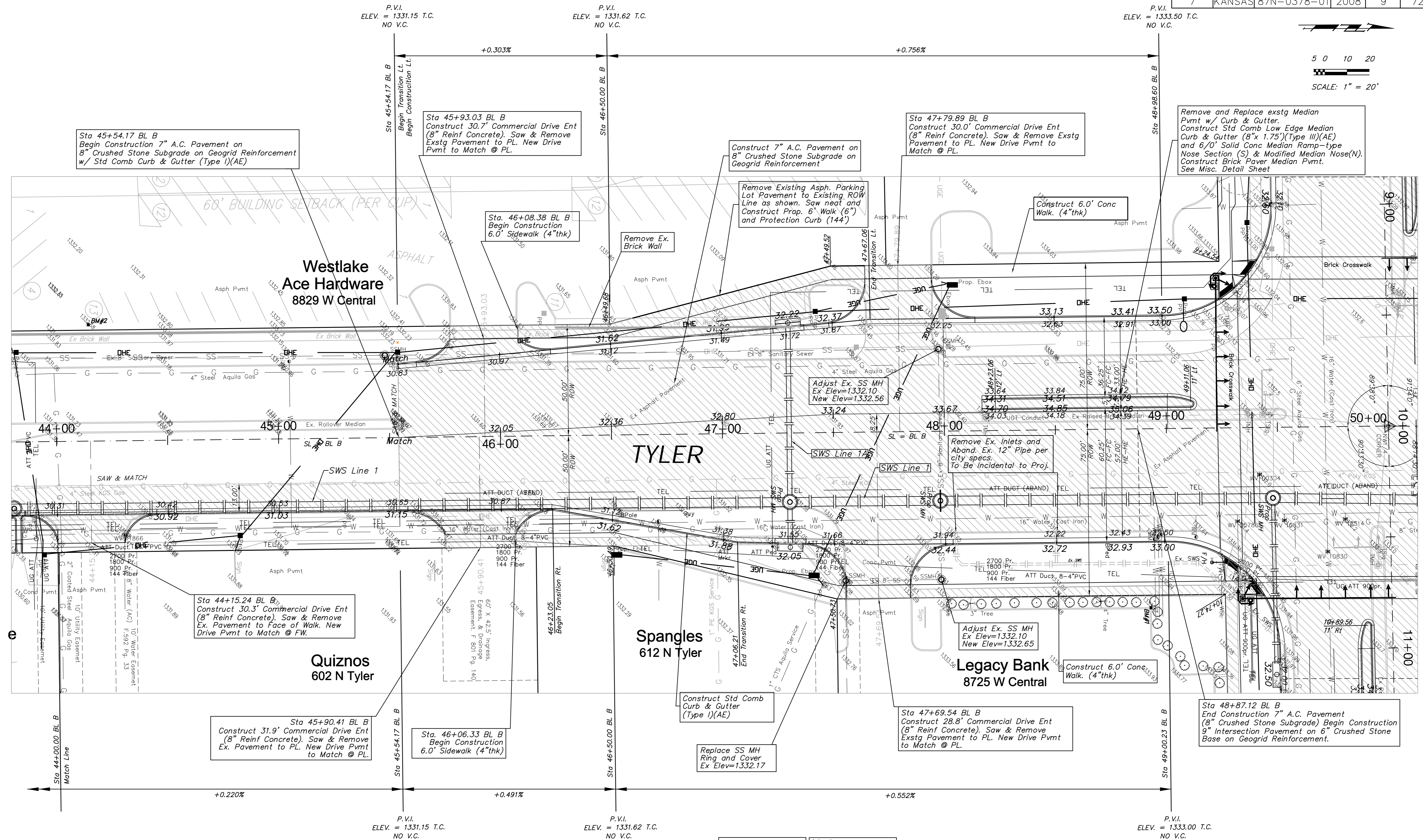
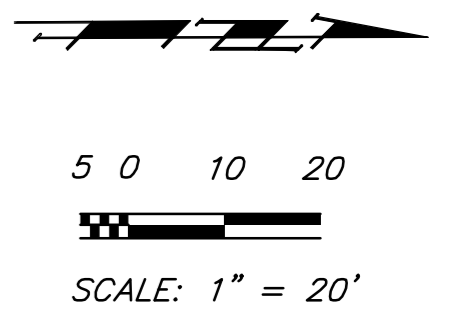


FHWA REGION NO.	STATE	PROJECT NO.	FISCAL YEAR	SHEET NO.	TOTAL SHEETS
7	KANSAS	87N-0378-01	2008	9	72

P.V.I. ELEV. = 1331.15 T.C. NO V.C.      P.V.I. ELEV. = 1331.62 T.C. NO V.C.      P.V.I. ELEV. = 1333.50 T.C. NO V.C.



Sta 45+54.17 BL B  
Begin Construction 7" A.C. Pavement on 8" Crushed Stone Subgrade on Geogrid Reinforcement w/ Std Comb Curb & Gutter (Type I)(AE)

Sta 45+93.03 BL B  
Construct 30.7' Commercial Drive Ent (8" Reinf Concrete). Saw & Remove Exstg Pavement to PL. New Drive Pvmnt to Match @ PL.

Sta. 46+08.38 BL B  
Begin Construction 6.0' Sidewalk (4"thk)

Construct 7" A.C. Pavement on 8" Crushed Stone Subgrade on Geogrid Reinforcement

Sta 47+79.89 BL B  
Construct 30.0' Commercial Drive Ent (8" Reinf Concrete). Saw & Remove Exstg Pavement to PL. New Drive Pvmnt to Match @ PL.

Remove and Replace exstg Median Pvmnt w/ Curb & Gutter. Construct Std Comb Low Edge Median Curb & Gutter (8"x 1.75")(Type III)(AE) and 6/0' Solid Conc Median Ramp-type Nose Section (S) & Modified Median Nose(N). Construct Brick Paver Median Pvmnt. See Misc. Detail Sheet

Sta 44+15.24 BL B  
Construct 30.3' Commercial Drive Ent (8" Reinf Concrete). Saw & Remove Ex. Pavement to Face of Walk. New Drive Pvmnt to Match @ FW.

Quiznos  
602 N Tyler

Sta 45+90.41 BL B  
Construct 31.9' Commercial Drive Ent (8" Reinf Concrete). Saw & Remove Ex. Pavement to PL. New Drive Pvmnt to Match @ PL.

Sta. 46+06.33 BL B  
Begin Construction 6.0' Sidewalk (4"thk)

Spangles  
612 N Tyler

Construct Std Comb Curb & Gutter (Type I)(AE)

Replace SS MH Ring and Cover Ex Elev=1332.17

Legacy Bank  
8725 W Central

Sta 47+69.54 BL B  
Construct 28.8' Commercial Drive Ent (8" Reinf Concrete). Saw & Remove Exstg Pavement to PL. New Drive Pvmnt to Match @ PL.

Sta 48+87.12 BL B  
End Construction 7" A.C. Pavement (8" Crushed Stone Subgrade) Begin Construction 9" Intersection Pavement on 6" Crushed Stone Base on Geogrid Reinforcement.

Note:  
Trees/Shrubs to be removed are marked thus:

Note:  
Pavement, Sidewalks, and Etc. To Be Removed Are Indicated By:

Drawing File: E:\eng\central and tyler intersection\land\base.dwg  
Design: T. Azlere  
Drawn: J. F. Bradley  
Approved: J. F. Bradley  
Scale: 1:20

Project No. 0510E393 CAPITAL IMPROVEMENT PROJECT  
**TYLER SOUTH PAVING**  
**CENTRAL & TYLER INTERSECTION**  
PAVEMENT, STORM WATER SEWER, TRAFFIC CONTROL IMPROVEMENTS

**Baughman Company, P.A.**  
315 Ellis St. Wichita, KS 67211 P 316-262-7271 F 316-262-0149  
ENGINEERING | SURVEYING | PLANNING | LANDSCAPE ARCHITECTURE

MAY 2008  
SHEET 9 OF 72