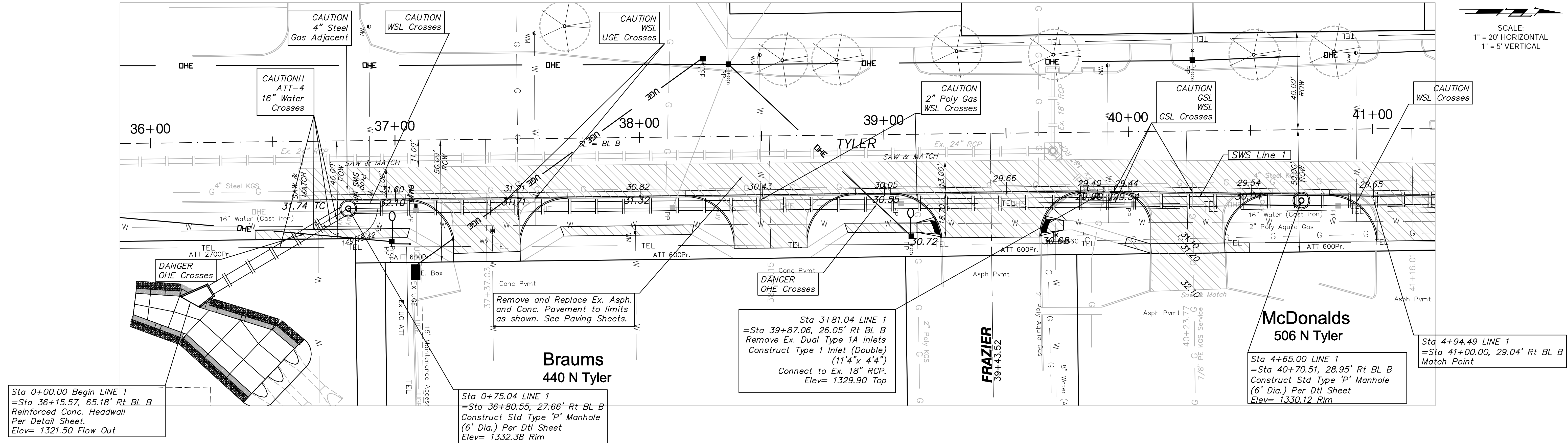


| FHWA REGION NO. | STATE | PROJECT NO. | FISCAL YEAR | SHEET NO. | TOTAL SHEETS |
|-----------------|--------|-------------|-------------|-----------|--------------|
| 7 | KANSAS | 87N-0378-01 | 2008 | 16 | 72 |

SCALE:
1" = 20' HORIZONTAL
1" = 5' VERTICAL



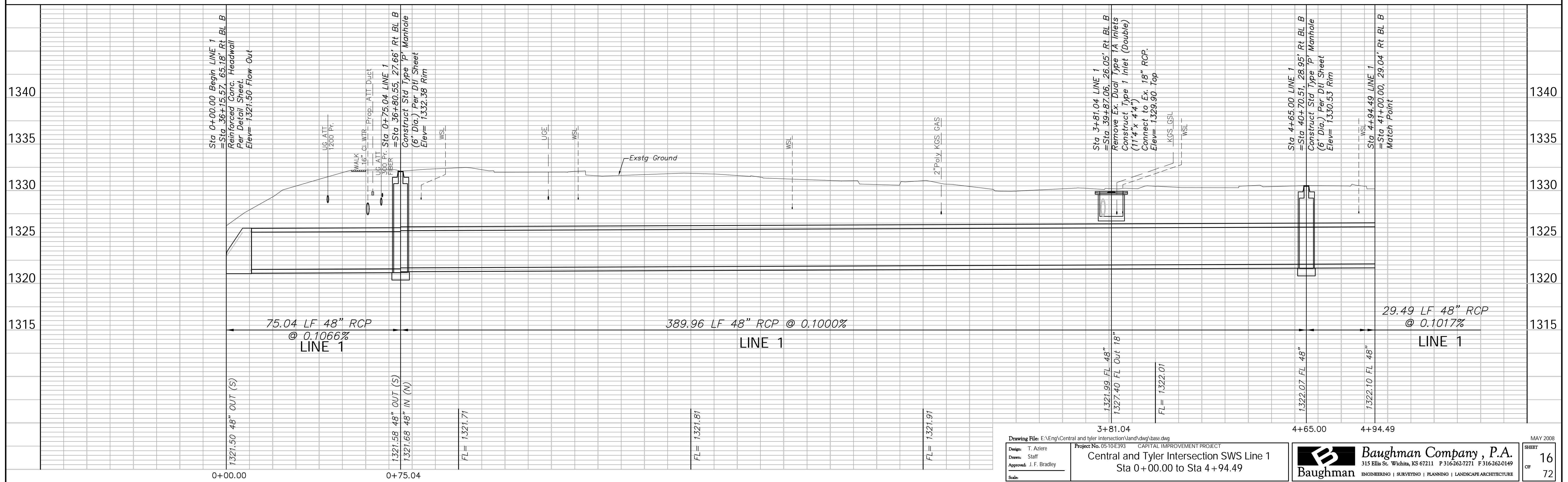
Sta 0+00.00 Begin LINE 1
=Sta 36+15.57, 65.18' Rt BL B
Reinforced Conc. Headwall
Per Detail Sheet.
Elev= 1321.50 Flow Out

Sta 0+75.04 LINE 1
=Sta 36+80.55, 27.66' Rt BL B
Construct Std Type 'P' Manhole
(6' Dia.) Per Dtl Sheet
Elev= 1332.38 Rim

Sta 3+81.04 LINE 1
=Sta 39+87.06, 26.05' Rt BL B
Remove Ex. Dual Type 1A Inlets
Construct Type 1 Inlet (Double)
(11'4" x 4'4")
Connect to Ex. 18" RCP.
Elev= 1329.90 Top

McDonalds
506 N Tyler
Sta 4+65.00 LINE 1
=Sta 40+70.51, 28.95' Rt BL B
Construct Std Type 'P' Manhole
(6' Dia.) Per Dtl Sheet
Elev= 1330.12 Rim

Sta 4+94.49 LINE 1
=Sta 41+00.00, 29.04' Rt BL B
Match Point



Sta 0+00.00 Begin LINE 1
=Sta 36+15.57, 65.18' Rt BL B
Reinforced Conc. Headwall
Per Detail Sheet.
Elev= 1321.50 Flow Out

Sta 0+75.04 LINE 1
=Sta 36+80.55, 27.66' Rt BL B
Construct Std Type 'P' Manhole
(6' Dia.) Per Dtl Sheet
Elev= 1332.38 Rim

Sta 3+81.04 LINE 1
=Sta 39+87.06, 26.05' Rt BL B
Remove Ex. Dual Type 1A Inlets
Construct Type 1 Inlet (Double)
(11'4" x 4'4")
Connect to Ex. 18" RCP.
Elev= 1329.90 Top

Sta 4+65.00 LINE 1
=Sta 40+70.51, 28.95' Rt BL B
Construct Std Type 'P' Manhole
(6' Dia.) Per Dtl Sheet
Elev= 1330.12 Rim

Sta 4+94.49 LINE 1
=Sta 41+00.00, 29.04' Rt BL B
Match Point

75.04 LF 48" RCP
@ 0.1066%
LINE 1

389.96 LF 48" RCP @ 0.1000%
LINE 1

29.49 LF 48" RCP
@ 0.1017%
LINE 1

Drawing File: E:\Eng\Central and tyler intersection\land\dwg\base.dwg

Project No. 05-10E393 CAPITAL IMPROVEMENT PROJECT
Central and Tyler Intersection SWS Line 1
Sta 0+00.00 to Sta 4+94.49

Baughman Company, P.A.
315 Ellis St. Wichita, KS 67211 P 316-262-7271 F 316-262-0149
ENGINEERING | SURVEYING | PLANNING | LANDSCAPE ARCHITECTURE

MAY 2008
SHEET 16 OF 72