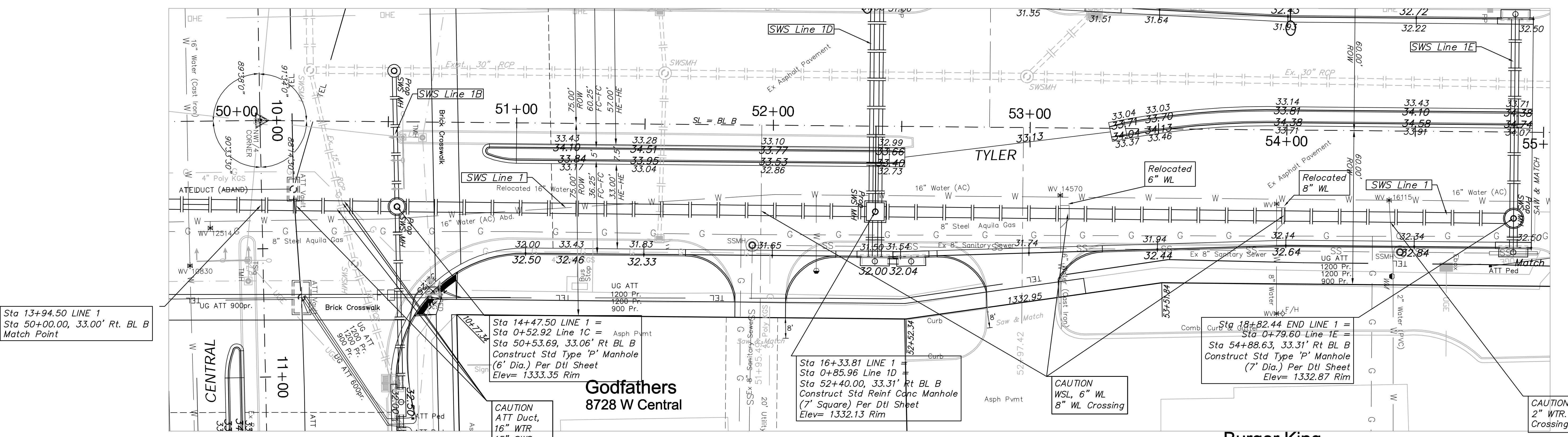


FHWA REGION NO.	STATE	PROJECT NO.	FISCAL YEAR	SHEET NO.	TOTAL SHEETS
7	KANSAS	87N-0378-01	2008	19	72

SCALE:
1" = 20' HORIZONTAL
1" = 5' VERTICAL



Sta 13+94.50 LINE 1
Sta 50+00.00, 33.00' Rt. BL B
Match Point

Sta 14+47.50 LINE 1 =
Sta 0+52.92 Line 1C = Asph Pmnt
Sta 50+53.69, 33.06' Rt BL B
Construct Std Type 'P' Manhole
(6' Dia.) Per Dtl Sheet
Elev= 1333.35 Rim

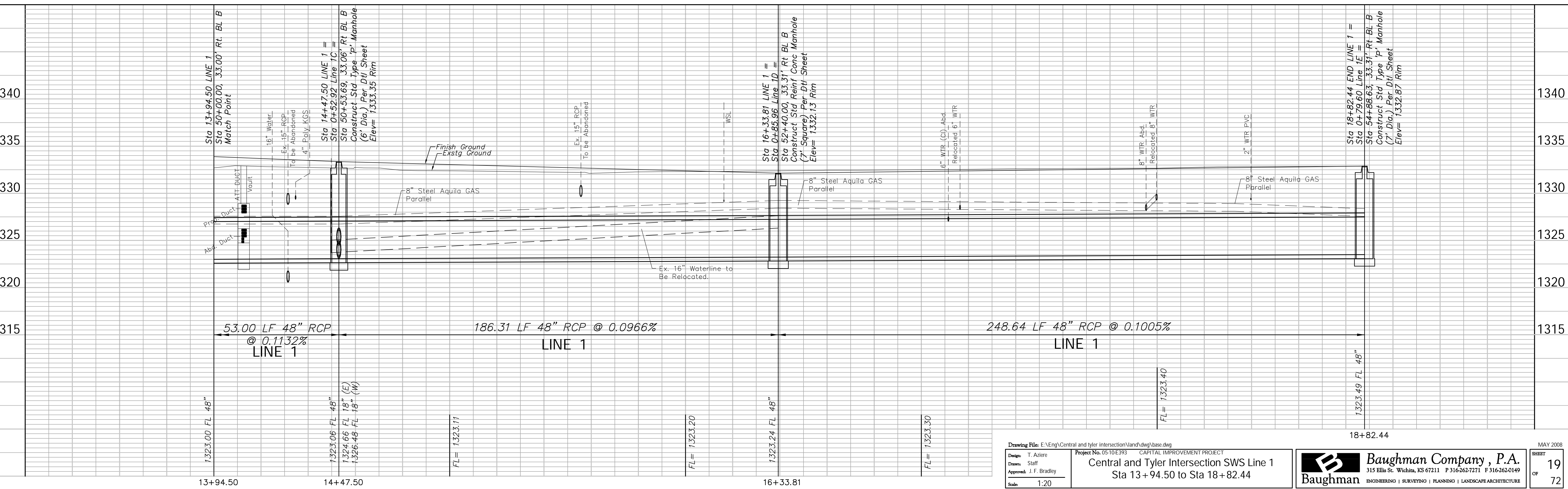
Sta 16+33.81 LINE 1
Sta 0+85.96 Line 1D
Sta 52+40.00, 33.31' Rt BL B
Construct Std Reinf Conc Manhole
(7' Square) Per Dtl Sheet
Elev= 1332.13 Rim

Sta 18+82.44 END LINE 1 =
Sta 0+79.60 Line 1E =
Sta 54+88.63, 33.31' Rt BL B
Construct Std Type 'P' Manhole
(7' Dia.) Per Dtl Sheet
Elev= 1332.87 Rim

CAUTION
ATT Duct,
16" WTR
15" SWS
4" Poly Gas
Crossing

CAUTION
WSL, 6" WL
8" WL Crossing

CAUTION
2" WTR
Crossing



13+94.50

14+47.50

16+33.81

18+82.44

Drawing File: E:\Eng\Central and tyler intersection\land\dwg\base.dwg

Design: T. Azire
Drawn: Staff
Approved: J. F. Bradley
Scale: 1:20

Project No. 05-10E393 CAPITAL IMPROVEMENT PROJECT
Central and Tyler Intersection SWS Line 1
Sta 13+94.50 to Sta 18+82.44

Baughman Company, P.A.
315 Ellis St. Wichita, KS 67211 P 316-262-7271 F 316-262-0149
ENGINEERING | SURVEYING | PLANNING | LANDSCAPE ARCHITECTURE

MAY 2008
SHEET 19 OF 72