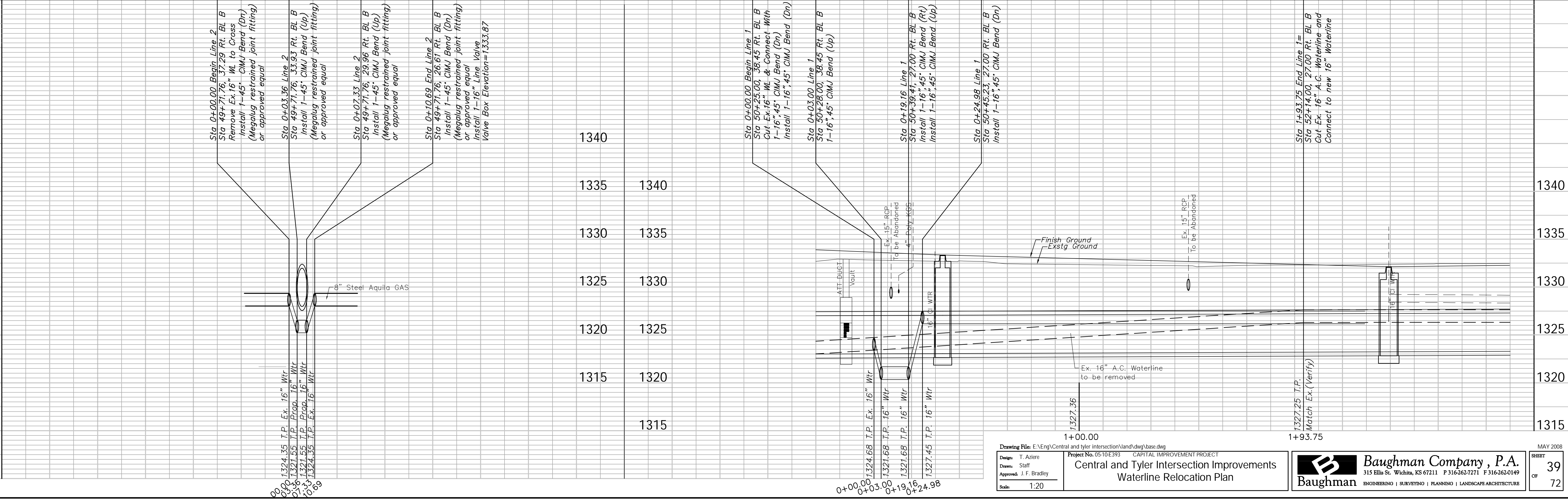
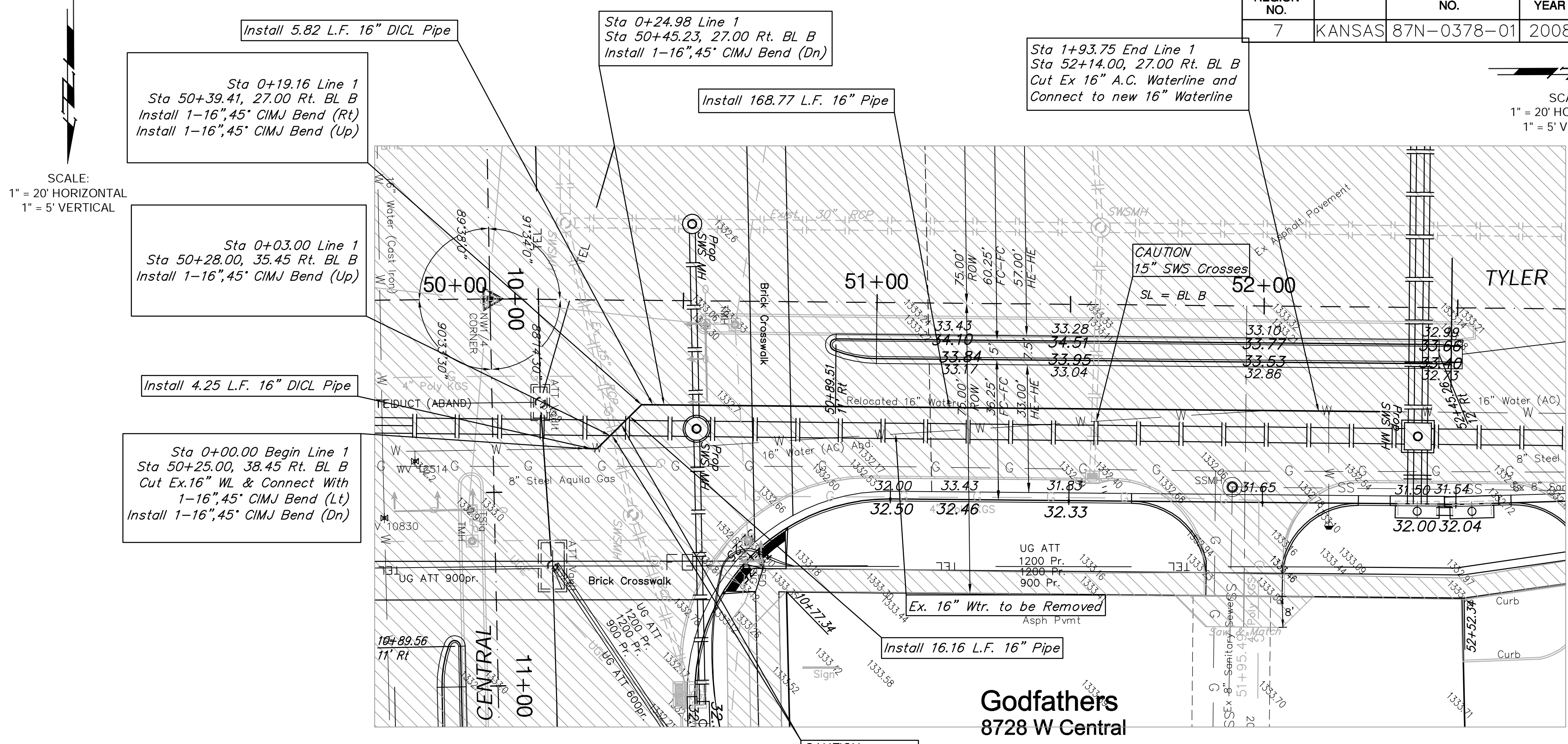
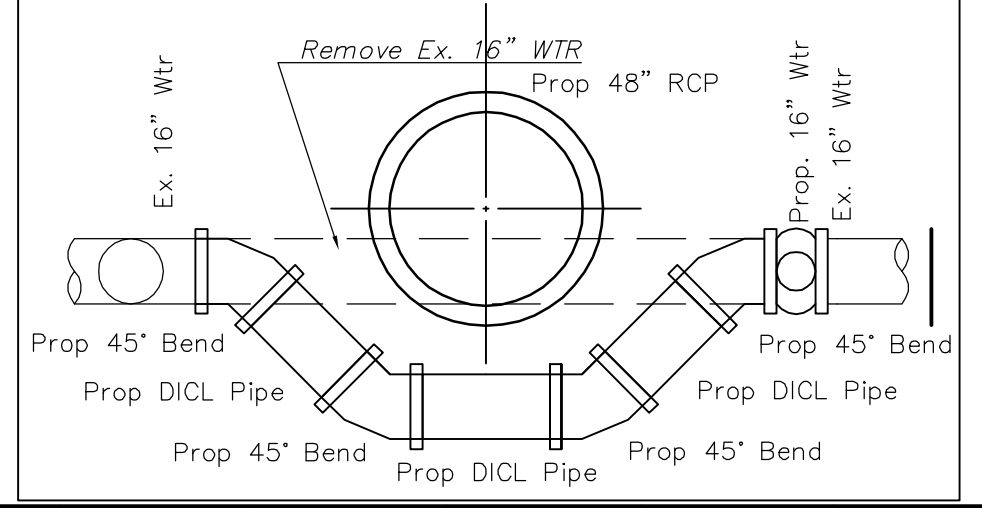
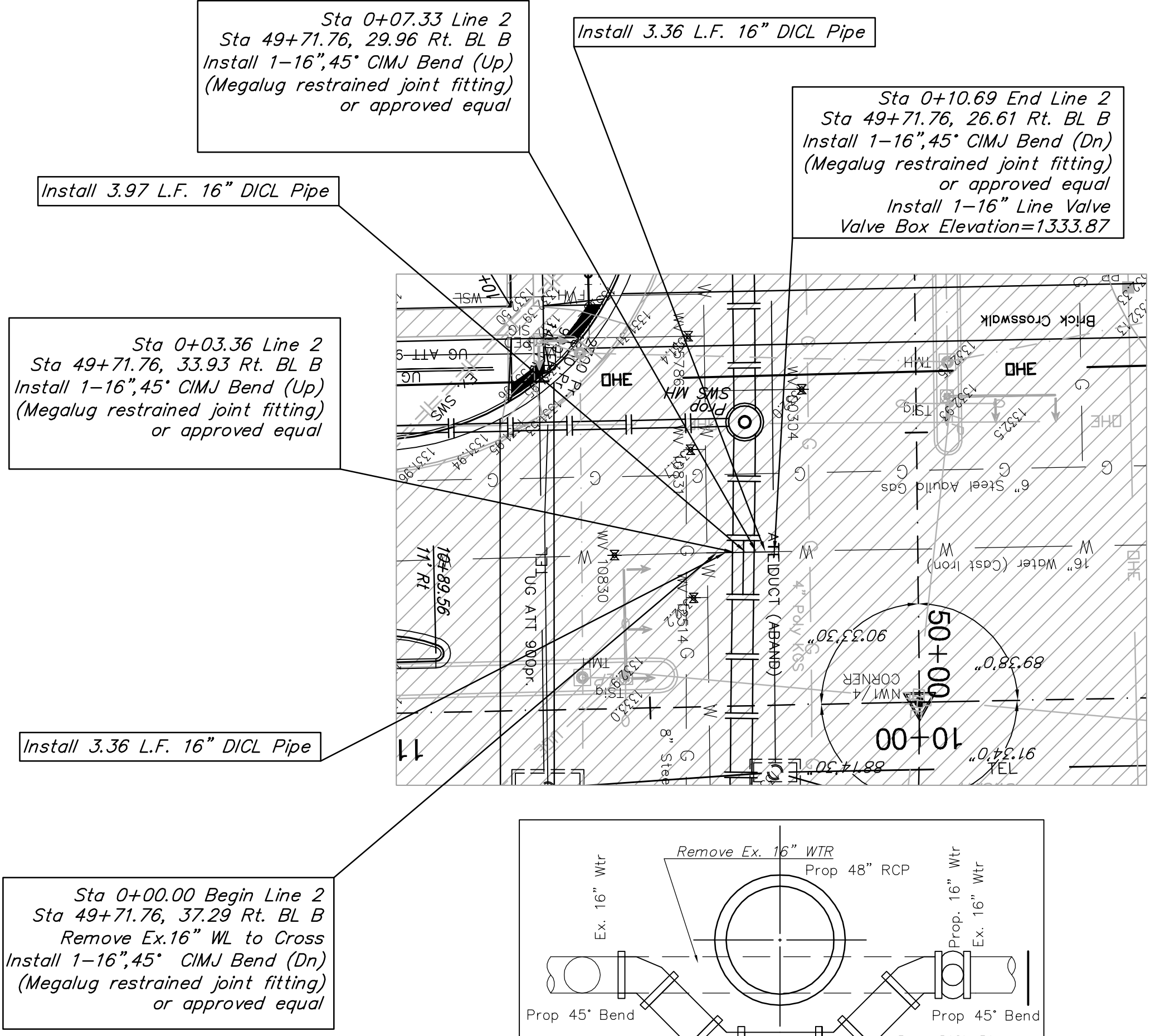


| FHWA REGION NO. | STATE | PROJECT NO. | FISCAL YEAR | SHEET NO. | TOTAL SHEETS |
|-----------------|--------|-------------|-------------|-----------|--------------|
| 7 | KANSAS | 87N-0378-01 | 2008 | 39 | 72 |

SCALE:
1" = 20' HORIZONTAL
1" = 5' VERTICAL



Drawing File: E:\Eng\Central and tyler intersection\land\dwg\base.dwg
 Project No. 05-10E393 CAPITAL IMPROVEMENT PROJECT
 Design: T. Azire
 Drawn: Staff
 Approved: J. F. Bradley
 Scale: 1:20
**Central and Tyler Intersection Improvements
 Waterline Relocation Plan**

Baughman Company, P.A.
 315 Ellis St. Wichita, KS 67211 P 316-262-7271 F 316-262-0149
 ENGINEERING | SURVEYING | PLANNING | LANDSCAPE ARCHITECTURE

MAY 2008
 SHEET 39 OF 72