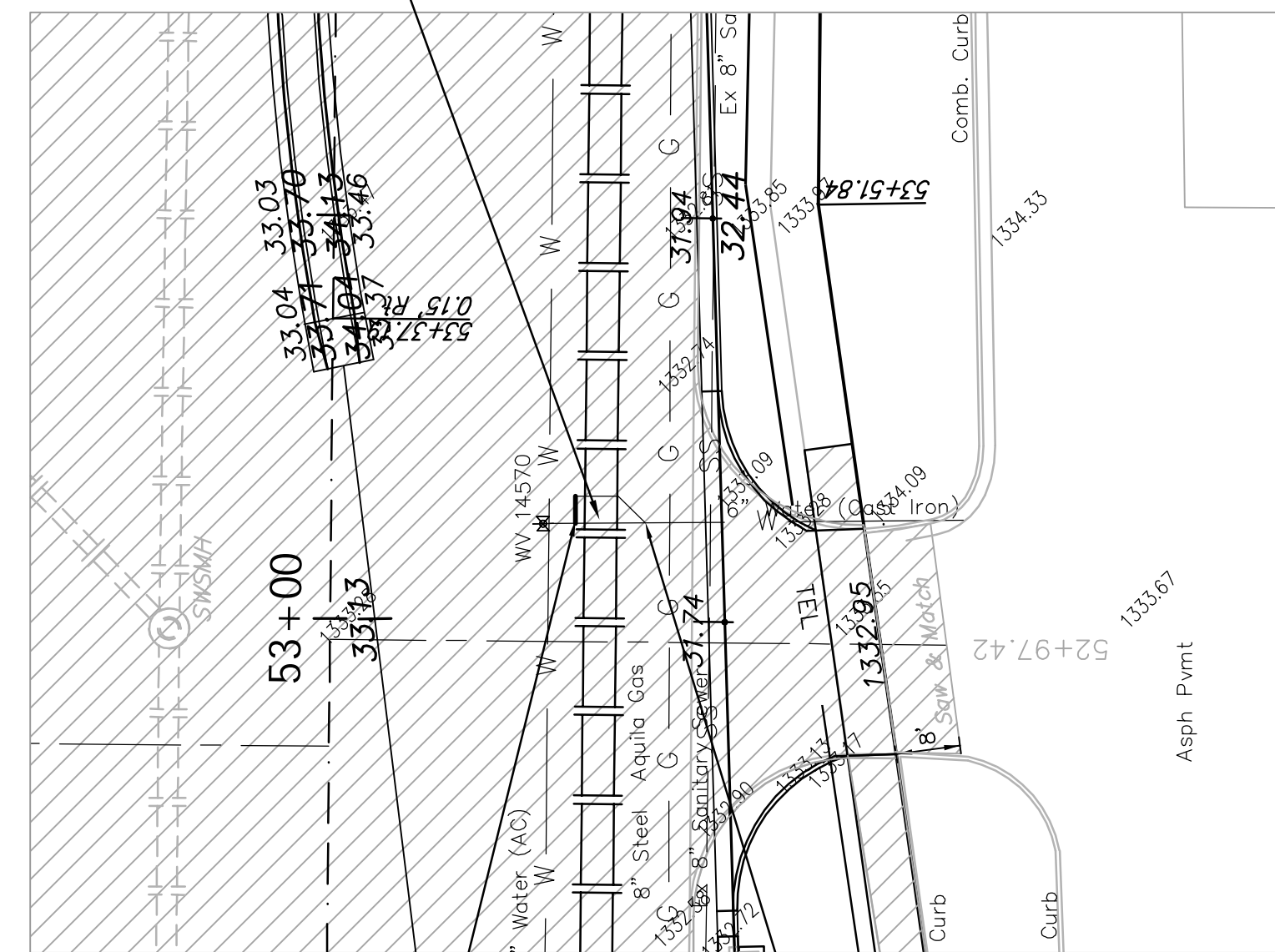


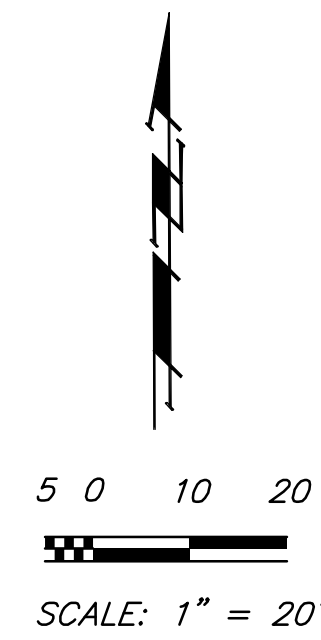
FHWA REGION NO.	STATE	PROJECT NO.	FISCAL YEAR	SHEET NO.	TOTAL SHEETS
7	KANSAS	87N-0378-01	2008	40	72

Sta 53+17.21, 47.50 Rt. BL B  
Construct Vertical Waterline  
Offset Per Detail This Sheet.

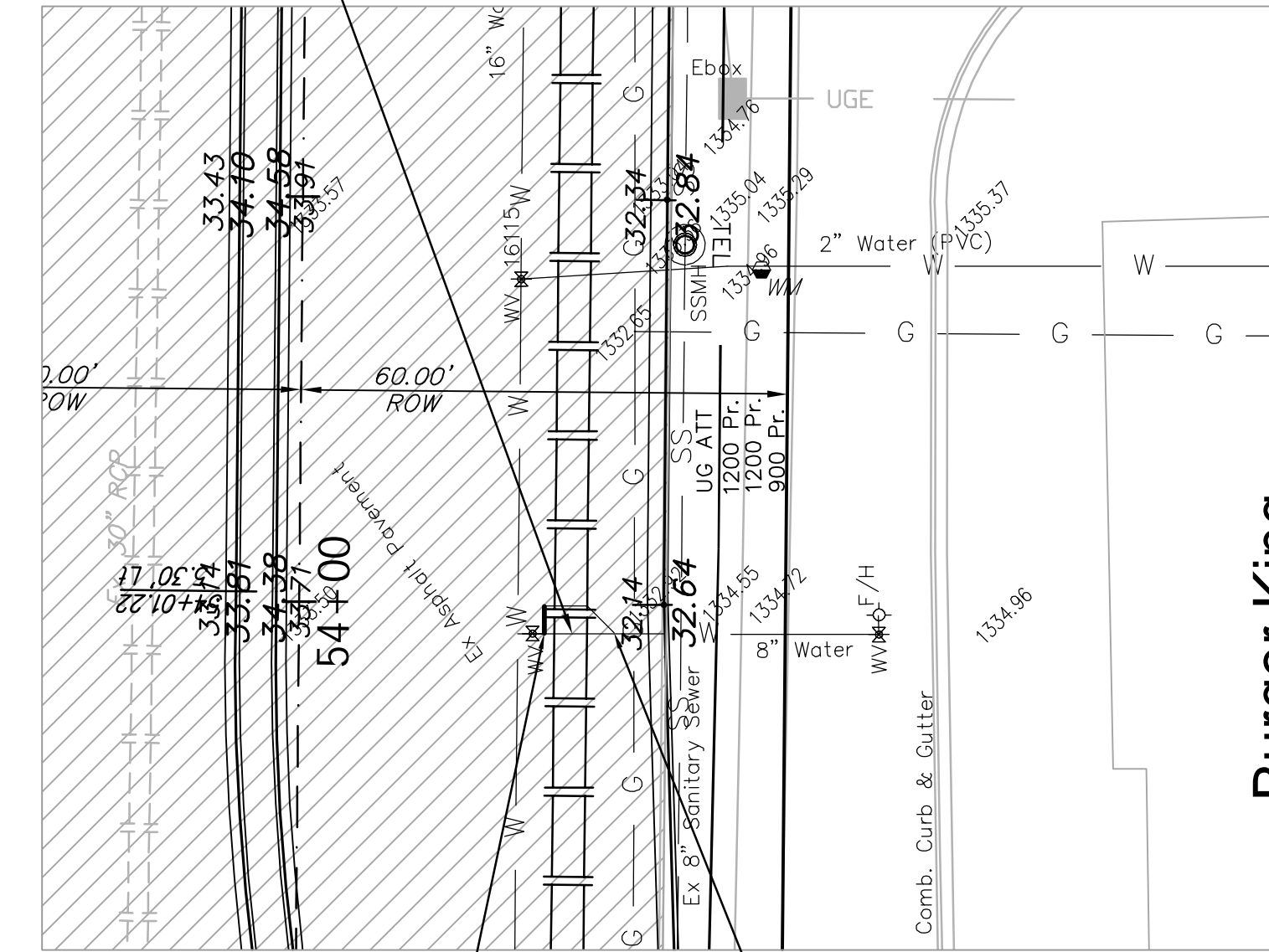


Connect to Ex. 6" Valve

Cut & Connect to Ex. 6" Valve

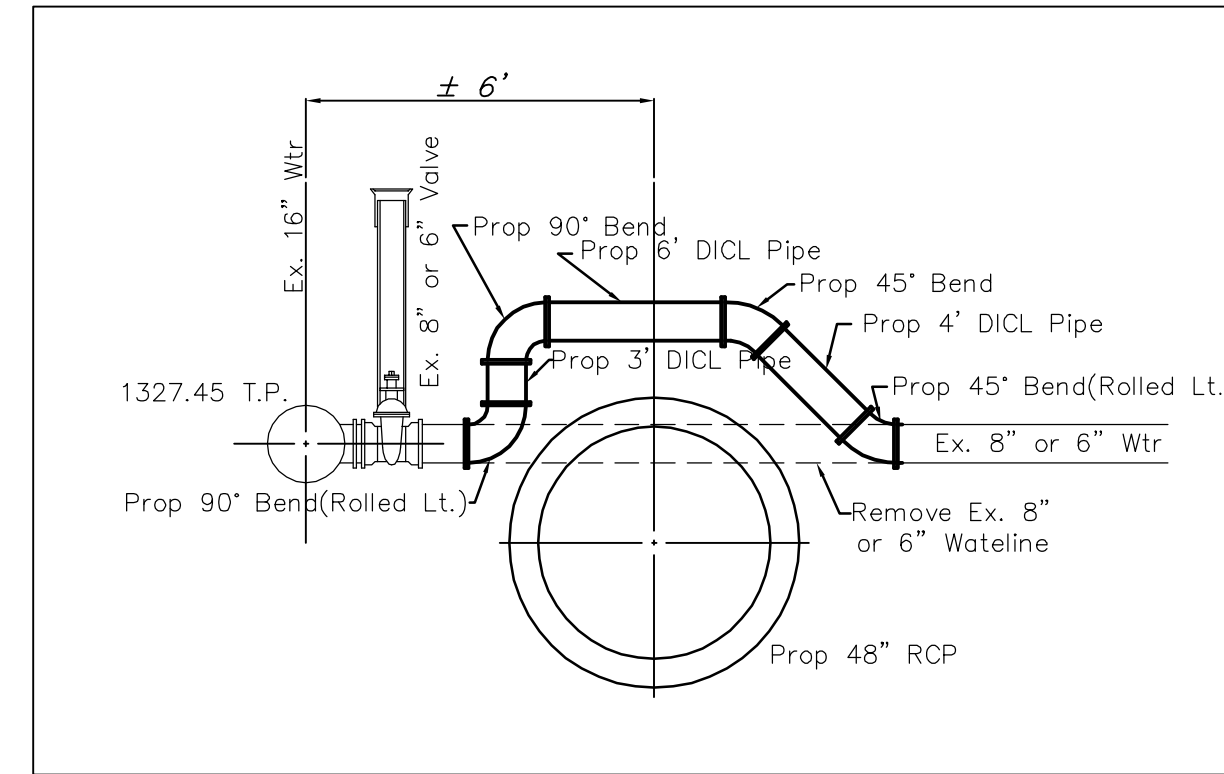
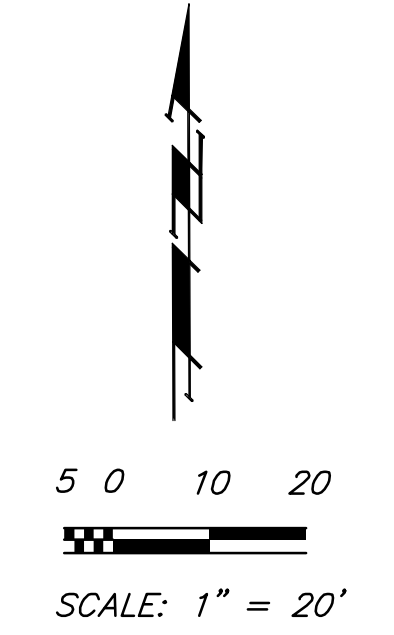


Sta 53+96.32, 33.70 Rt. BL B  
Construct Vertical Waterline  
Offset Per Detail This Sheet.



Connect to Ex. 8" Valve

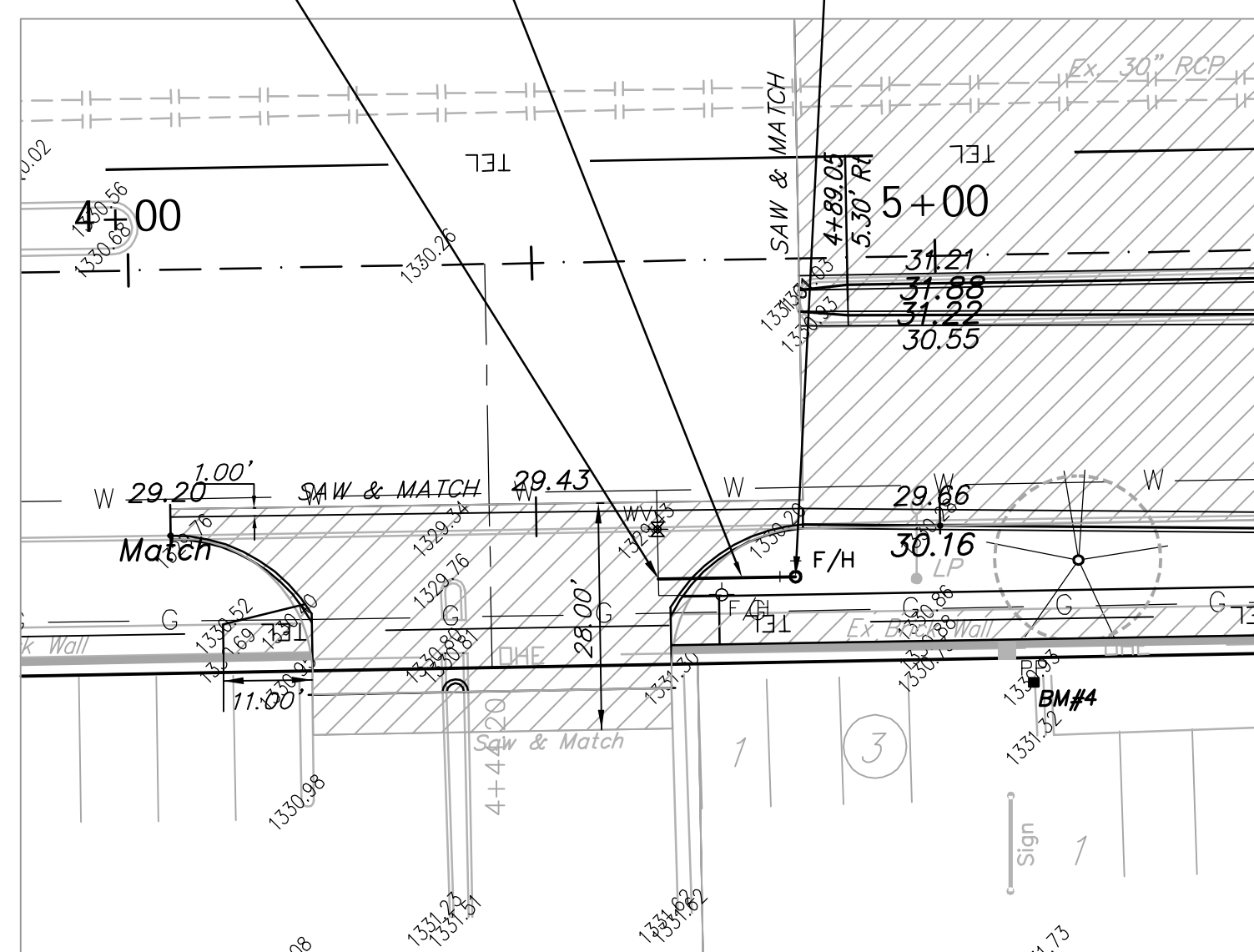
Cut & Connect to Ex. 8" Valve



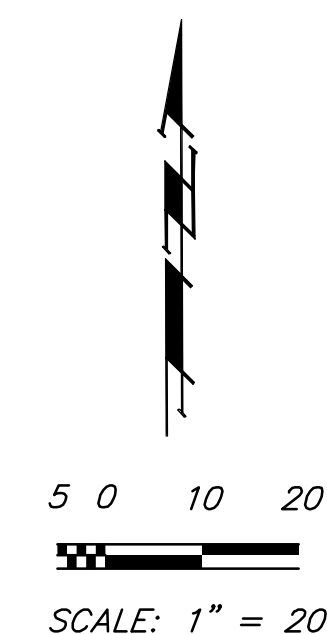
VERTICAL OFFSET DETAIL

Install 17.00 L.F. 6" Pipe

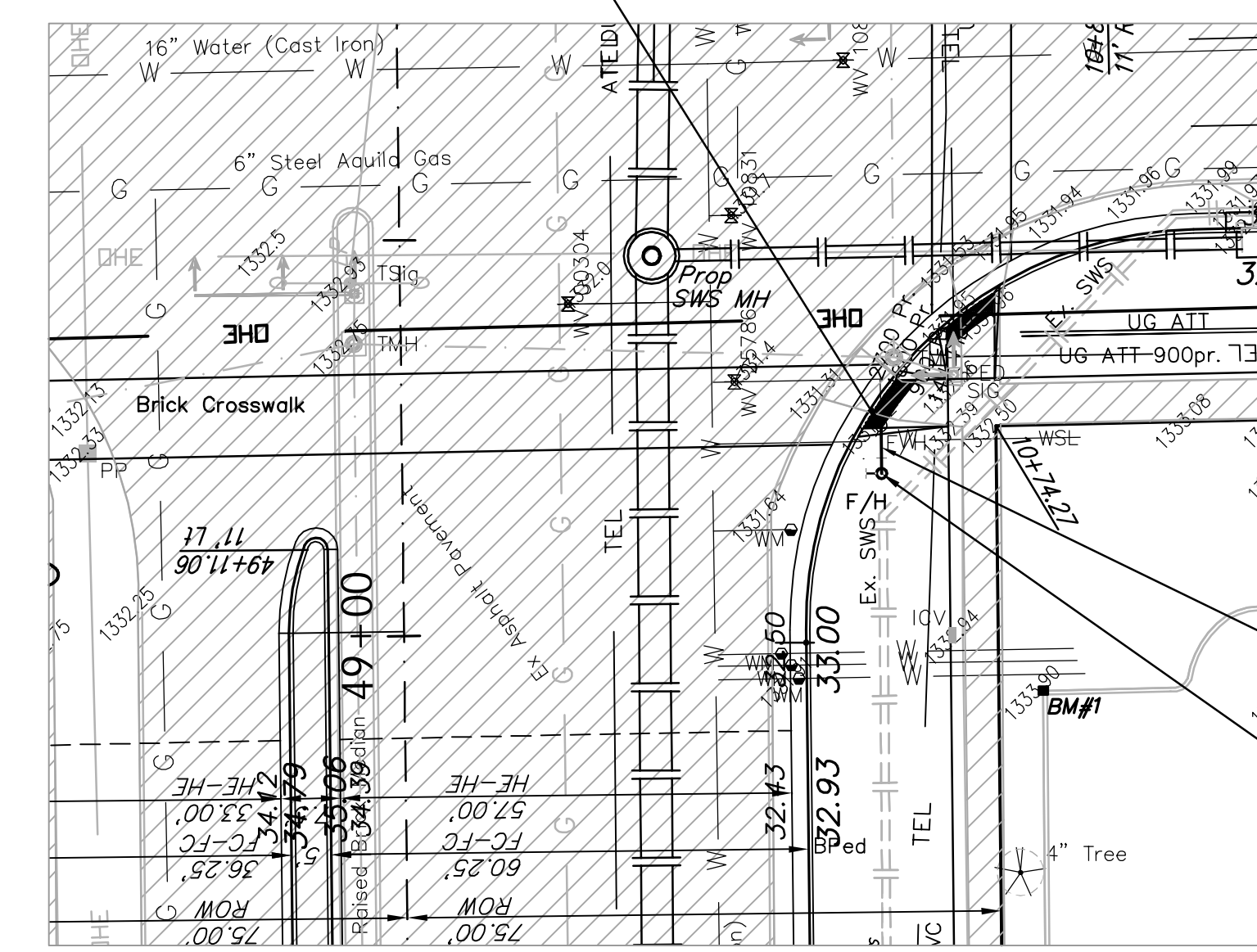
Sta 4+64.99, 39.42 Rt.  
Cut, remove, and relocate Ex.  
6" 90° Bend. Extend 6" DICL  
Pipe East.



Sta 4+81.99, 39.42 Rt.  
Relocate Fire Hydrant w/  
Tracer Wire Test Station.  
See Water Detail Sheet

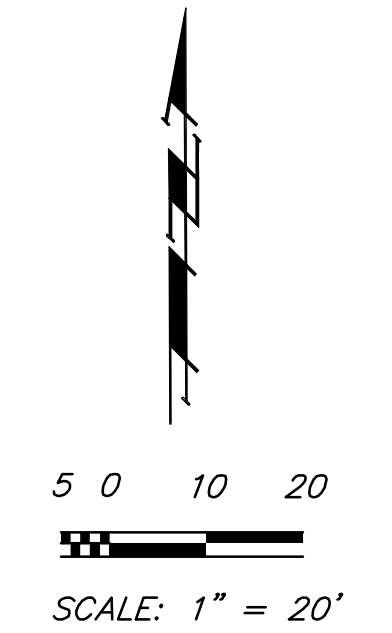


Sta 49+25.88, 60.52 Rt. BL B  
Remove Ex. Hydrant and Extend  
6" DICL Pipe South.



Install 6.00 L.F. 6" DICL Pipe

Sta 49+19.84, 60.54 Rt. BL B  
Relocate Fire Hydrant w/  
Tracer Wire Test Station.  
See Water Detail Sheet



Drawing File: E:\Eng\Central and tyler intersection\land\dwg\base.dwg

Design: T. Azire  
Drawn: Staff  
Approved: J. F. Bradley  
Scale: 1:20

Project No. 05-10E393 CAPITAL IMPROVEMENT PROJECT  
Central and Tyler Intersection Improvements  
Waterline Relocation Plan

**Baughman Company, P.A.**  
315 Ellis St. Wichita, KS 67211 P 316-262-7271 F 316-262-0149  
ENGINEERING | SURVEYING | PLANNING | LANDSCAPE ARCHITECTURE

MAY 2008  
SHEET 40 OF 72