

**BENCHMARK:**  
CROSS CUT ON NORTH  
END OF WEST HEADWALL  
137.5' SOUTH & 12' WEST  
OF THE INTERSECTION OF  
29TH ST N & 127TH ST E.  
ELEV. = 1382.45 NAVD88

☉ OF WEST EDGE OF  
CONCRETE DRIVE 31.4' NE  
OF THE EAST 1/4 CORNER  
OF SEC. 3, TWP 27-S,  
R-2-E.  
ELEV. = 1373.82 NAVD88

No construction or equipment operation shall be allowed within ConocoPhillips easement without first contacting a representative from the respective company, minimum one week prior to construction. No work shall be allowed within these easements until permission has been granted by the pipeline companies and/or encroachment agreements have been signed.  
ConocoPhillips Contact: Craig Winn 316-655-5058

Curve #1  
Curve Data Based on Waterline  
Rad. = 233.98' Delta = 22° 48' 24" Tangent = 47.19'  
Arc = 93.13' L.C. = 92.52' Def/Ft. = 7.34672 Min.

Station	CHORD LENGTHS		
	6" Rt.	Defl.	T. Defl.
1+39.68	-	0'00"00"	0'00"00"
1+50.00	10.32'	10.58'	1'15"49"
1+75.00	25.00'	25.63'	3'03"40"
2+00.00	25.00'	25.63'	3'03"40"
2+25.00	25.00'	25.63'	3'03"40"
2+32.81	7.81'	8.01'	0'57"22"

Curve #2  
Curve Data Based on Waterline  
Rad. = 206' Delta = 30° 21' 38" Tangent = 55.89'  
Arc = 109.16' L.C. = 107.89' Def/Ft. = 8.34387 Min.

Station	CHORD LENGTHS		
	6" Rt.	Defl.	T. Defl.
2+32.81	-	0'00"00"	0'00"00"
2+50.00	17.19'	16.68'	2'23"26"
2+75.00	25.00'	24.26'	3'28"36"
3+00.00	25.00'	24.26'	3'28"36"
3+25.00	25.00'	24.26'	3'28"36"
3+41.97	16.97'	16.47'	2'21"36"

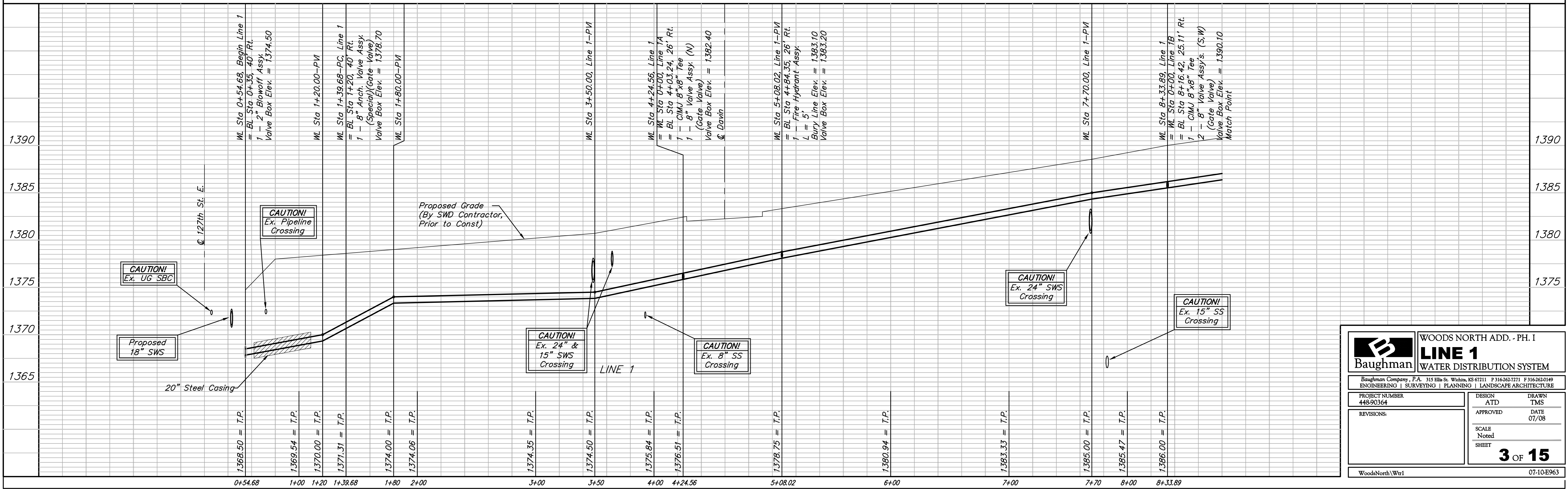
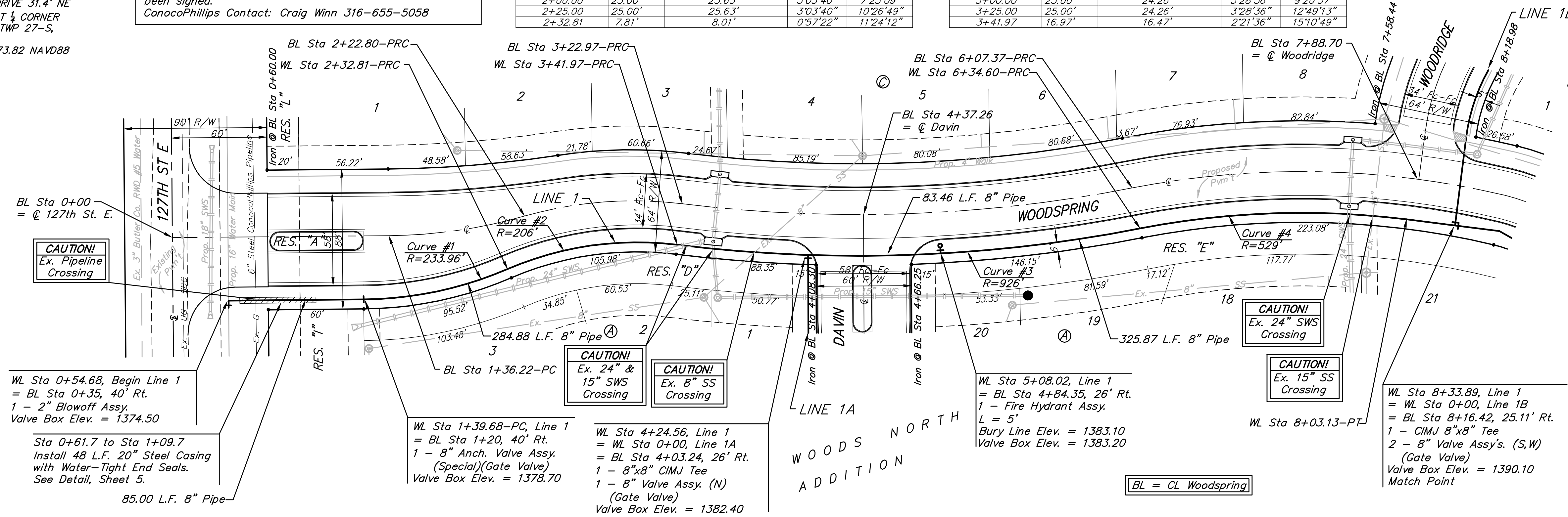
Curve #3  
Curve Data Based on Waterline  
Rad. = 926' Delta = 18'06" 20" Tangent = 147.54'  
Arc = 292.63' L.C. = 291.40' Def/Ft. = 1.85622 Min.

Station	CHORD LENGTHS		
	6" Rt.	Defl.	T. Defl.
3+41.97	-	0'00"00"	0'00"00"
3+50.00	8.03'	8.08'	0'14"54"
3+75.00	25.00'	25.16'	0'46"24"
4+00.00	25.00'	25.16'	0'46"24"
4+24.56	24.56'	24.72'	0'45"35"
4+50.00	25.00'	25.60'	0'47"13"
4+75.00	25.00'	25.16'	0'46"24"
5+00.00	25.00'	25.16'	0'46"24"
5+08.02	8.02'	8.07'	0'14"53"
5+25.00	16.98'	17.09'	0'31"31"
5+50.00	25.00'	25.16'	0'46"24"
5+75.00	25.00'	25.16'	0'46"24"
6+00.00	25.00'	25.16'	0'46"24"
6+25.00	25.00'	25.16'	0'46"24"
6+34.60	9.60'	9.66'	0'17"49"

Curve #4  
Curve Data Based on Waterline  
Rad. = 529' Delta = 18° 15' 14" Tangent = 84.99'  
Arc = 168.53' L.C. = 167.82' Def/Ft. = 3.24937 Min.

Station	CHORD LENGTHS		
	6" Rt.	Defl.	T. Defl.
6+34.60	-	0'00"00"	0'00"00"
6+50.00	15.40'	15.23'	0'50"02"
6+75.00	25.00'	24.71'	1'21"14"
7+00.00	25.00'	24.71'	1'21"14"
7+25.00	25.00'	24.71'	1'21"14"
7+50.00	25.00'	24.71'	1'21"14"
7+75.00	25.00'	24.71'	1'21"14"
8+00.00	25.00'	24.71'	1'21"14"
8+03.13	3.13'	3.09'	0'10"10"

Scale: 1" = 40' Horizontal  
1" = 5' Vertical  
= Iron



**B** WoodsNorth | Wrl  
Baughman  
WOODS NORTH ADD. - PH. I  
**LINE 1**  
WATER DISTRIBUTION SYSTEM  
Baughman Company, P.A. 315 Ellis St. Wichita, KS 67211 P 316-262-7211 F 316-262-0149  
ENGINEERING | SURVEYING | PLANNING | LANDSCAPE ARCHITECTURE  
PROJECT NUMBER: 448-90364  
DESIGN: ATD  
DRAWN: TMS  
APPROVED: [Signature]  
DATE: 07/08  
SCALE: Noted  
SHEET: 3 OF 15  
07-10-E963