

Horizontal Project Datum: Assumed

Sta. 10+12.55
 @ Sta. 50+12.55
 1 - 16" DICL MJ 22 1/2' Bend (Hor. and Rotated)
 N= 1715386.279
 E= 1677834.310

Sta. 10+33.66
 @ Sta. 50+33.66, 20' Rt.
 1 - 16" DICL MJ 11-1/4' Bend (Vert.)

Sta. 11+72
 @ Sta. 51+72, 20' Rt.
 1 - 16"x 8" DICL MJ Tee
 1 - 8" Anchor Gate Valve Assembly (S)
 1 - 8" DICL MJ Plug (S)
 Top Valve Box 1400.30

N 1/4 Cor. Sec. 29
 Twp 26-S, R-2-E
 N 1715406.141 PL MKR
 E 1677821.697

Remove and Replace 6" Asphalt Ent. (17 L.F.)

Remove and Replace Gravel Ent. (12 L.F.)

Field Verify Elev. of Gas Line Prior to Const.

Field Verify Elev. of Gas Line Prior to Const.
 49+43.33

Sta. 9+89.21
 @ Sta. 49+91.04, 28.7' Rt.
 1 - 16" DICL MJ 11-1/4' Bend (Vert.)

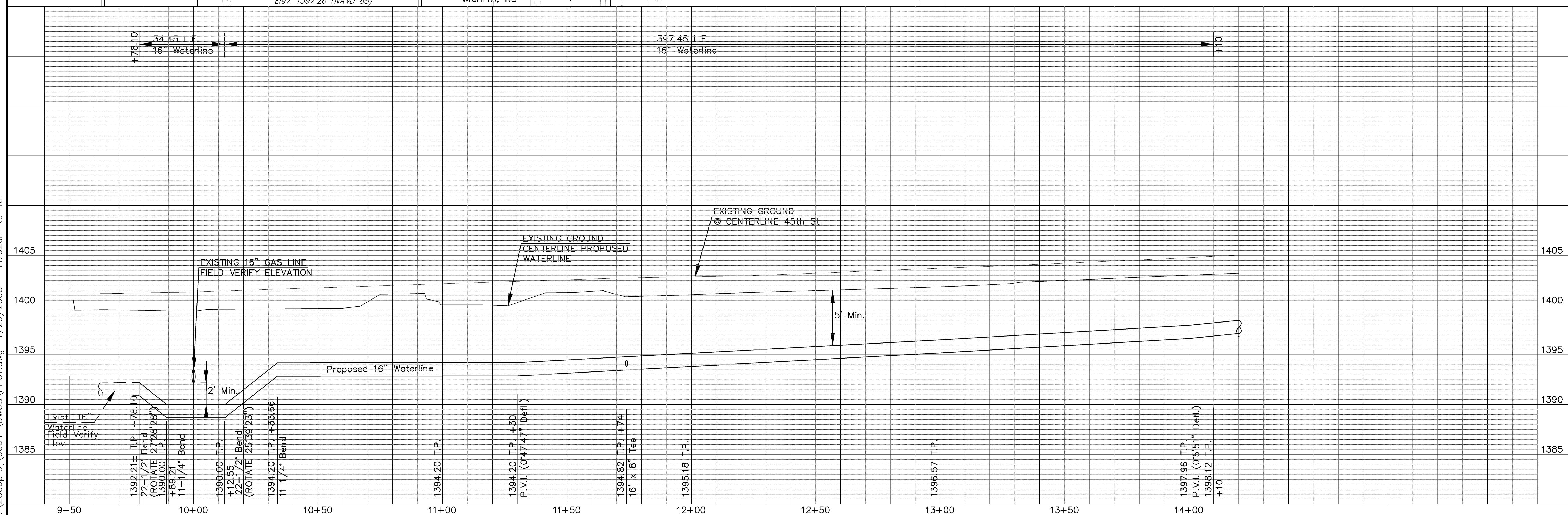
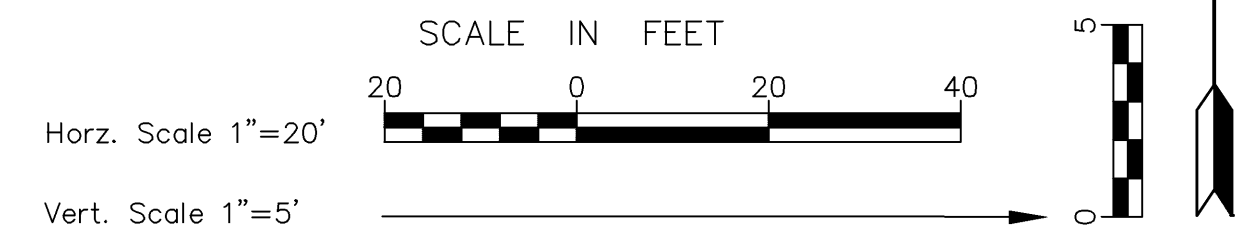
Sta. 9+78.10±
 @ Sta. 49+80.58, 33' Rt.
 1 - 16" DICL MJ 22-1/2' Bend (Hor. and Rotated)
 Connect to Exist. 16"x 6" Anchor Tee.
 Remove 16" MJ Plug and Salvage to City.*
 N= 1715373.142
 E= 1677802.594

BM #5 " " cut on North end of concrete of Drop Inlet 54.21' North & 8.21' West of N1/4 Corner Sec. 29, Twp. 26-S, R-2-E.
 Elev. 1397.26 (NAVD 88)

* 1825 S. McLean WICHITA, KS

PROPOSED WATERLINE LEGEND

- 12+00 Proposed Waterline
- Proposed Valve
- Tee
- Cross
- Horizontal Bend
- Long Sleeve
- Reducer
- Fire Hydrant
- Cap or Plug Waterline
- Air Release Assembly
- Pavement Removal



Revision									
By	Approved	Date	No.	No.	No.	No.	No.	No.	No.

CFS PROJECT NO: 06-641

CITY OF WICHITA, KANSAS
 45th STREET NORTH
 WATER DISTRIBUTION SYSTEM IMPROVEMENTS
 STA. 9+78 TO STA. 14+10

DATE: 01/25/08 DESIGNED BY: DWH DRAWN BY: FAH CHECKED BY: KKH

SHEET TITLE:
 WATERLINE PLAN/PROFILE

PROJECT NUMBER:
 448-90218

FINAL

SHEET NUMBER:
 3 of 16