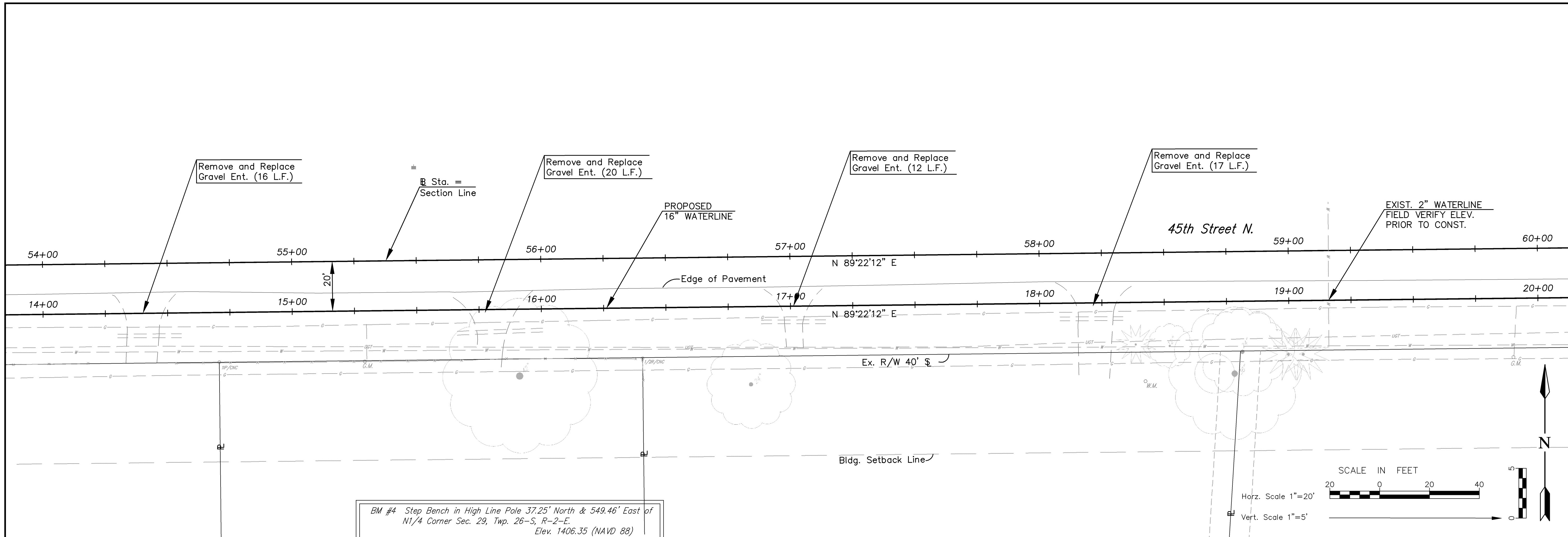
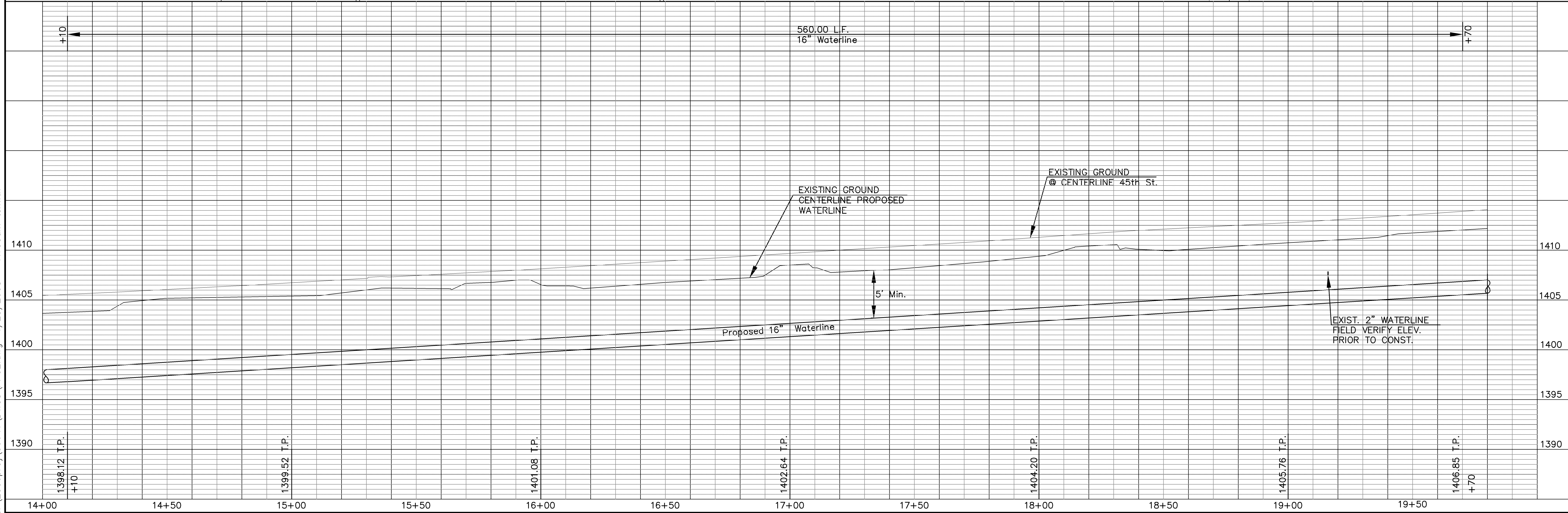
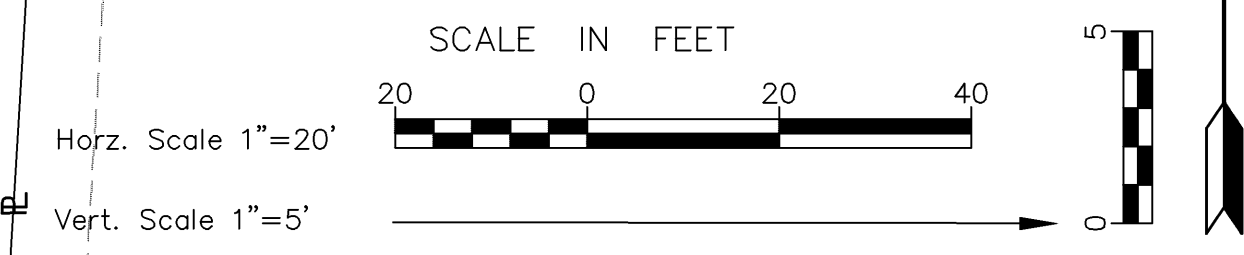


J:\2006proj\06641\DWG\PP02.dwg 1/25/2008 - 11:53am tsmith



BM #4 Step Bench in High Line Pole 37.25' North & 549.46' East of N1/4 Corner Sec. 29, Twp. 26-S, R-2-E. Elev. 1406.35 (NAVD 88)



No.	Date	By	Approved	Revision

CFS Cook, Flatt & Strobel ENGINEERS, P.A.

CFS PROJECT NO: 06-641

CITY OF WICHITA, KANSAS
45th STREET NORTH
WATER DISTRIBUTION SYSTEM IMPROVEMENTS
 STA. 14+10 TO STA. 19+70

DATE: 01/25/08 DESIGNED BY: DWH DRAWN BY: FAH CHECKED BY: KKH

SHEET TITLE: **WATERLINE PLAN/PROFILE**

PROJECT NUMBER: **448-90218**

FINAL

SHEET NUMBER: **4 of 16**