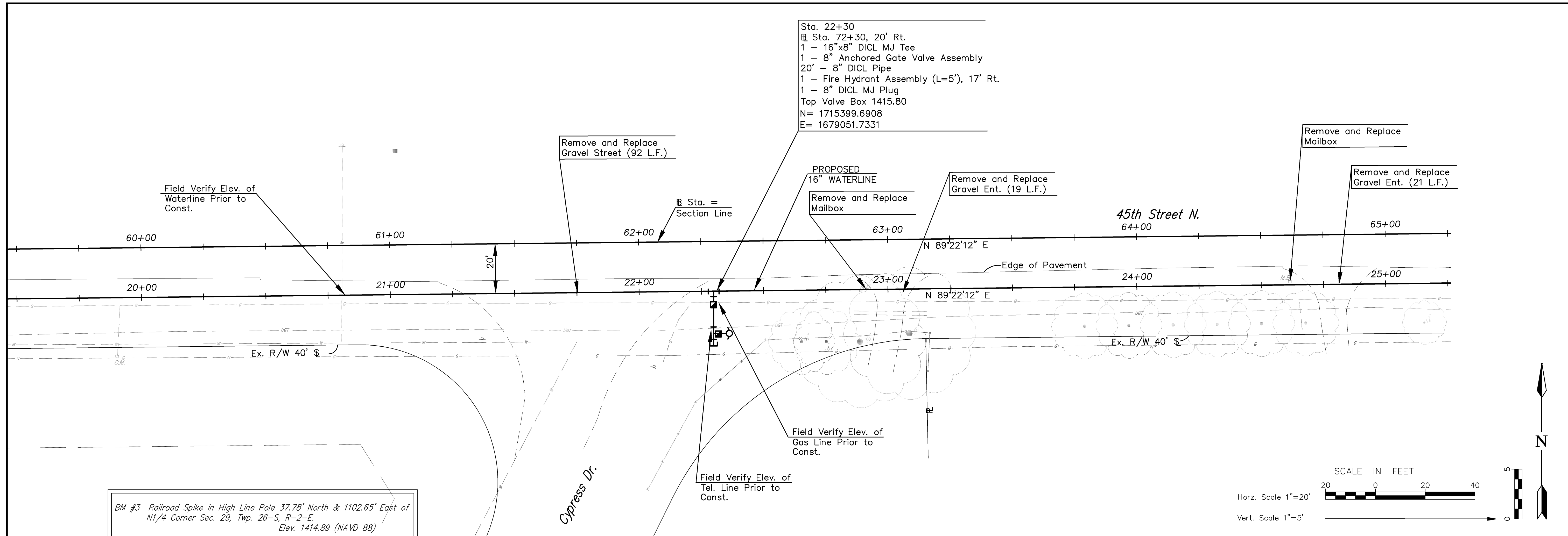
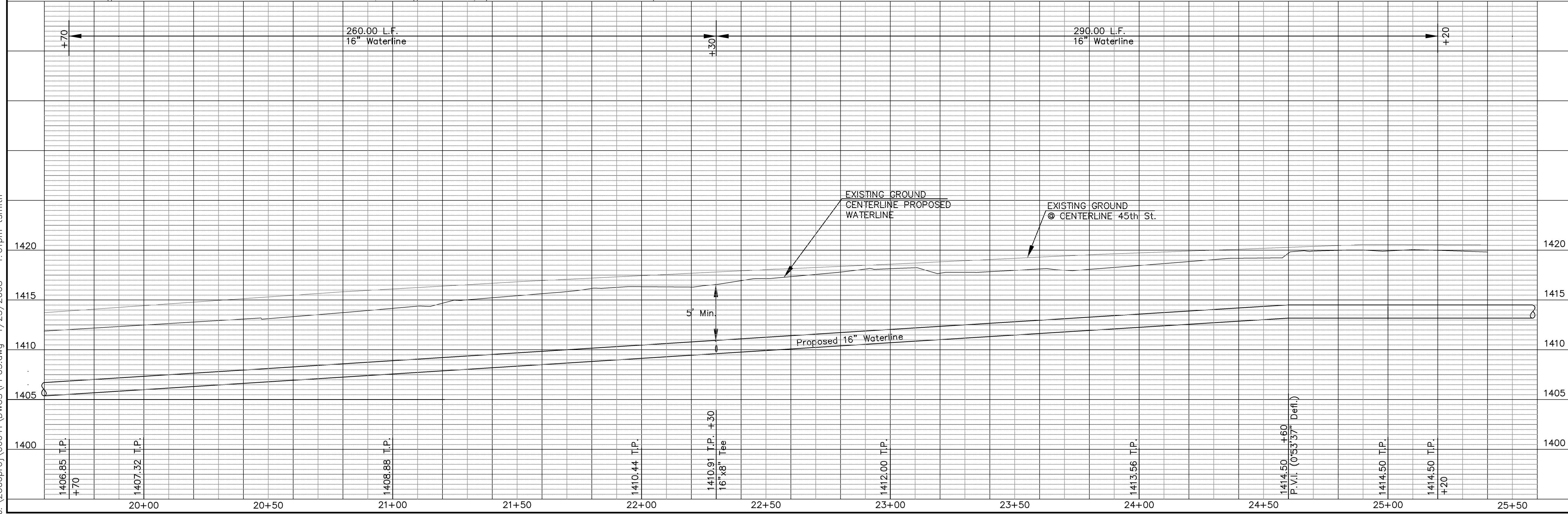
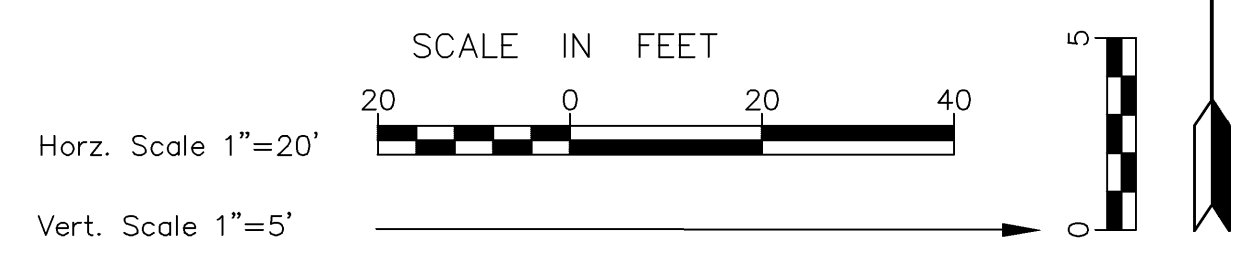


J:\2006proj\06641\DWG\PP03.dwg 1/25/2008 - 1:01pm tsmith



- Sta. 22+30
- 1 - 16"x8" DICL MJ Tee
- 1 - 8" Anchored Gate Valve Assembly
- 20' - 8" DICL Pipe
- 1 - Fire Hydrant Assembly (L=5'), 17' Rt.
- 1 - 8" DICL MJ Plug
- Top Valve Box 1415.80
- N= 1715399.6908
- E= 1679051.7331

BM #3 Railroad Spike in High Line Pole 37.78' North & 1102.65' East of N1/4 Corner Sec. 29, Twp. 26-S, R-2-E. Elev. 1414.89 (NAVD 88)



No.	Date	By	Approved	Revision
<	<	<	<	<

**Cook, Flatt & Strobel**  
 ENGINEERS, P.A.

CFS PROJECT NO: 06-641

**CITY OF WICHITA, KANSAS**  
**45th STREET NORTH**  
**WATER DISTRIBUTION SYSTEM IMPROVEMENTS**  
**STA. 19+70 TO STA. 25+20**

DATE: 01/25/08 DESIGNED BY: DWH DRAWN BY: FAH CHECKED BY: KKH

SHEET TITLE:	
WATERLINE PLAN/PROFILE	
PROJECT NUMBER:	
448-90218	
SHEET NUMBER:	
5 of 16	