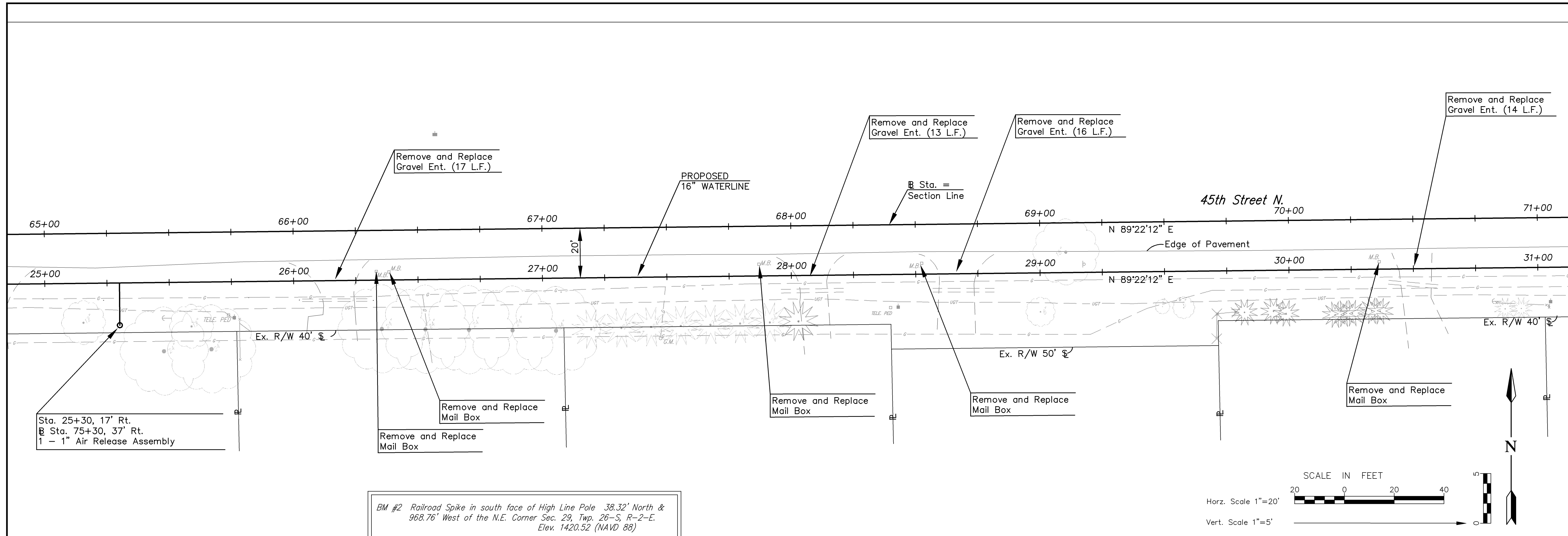
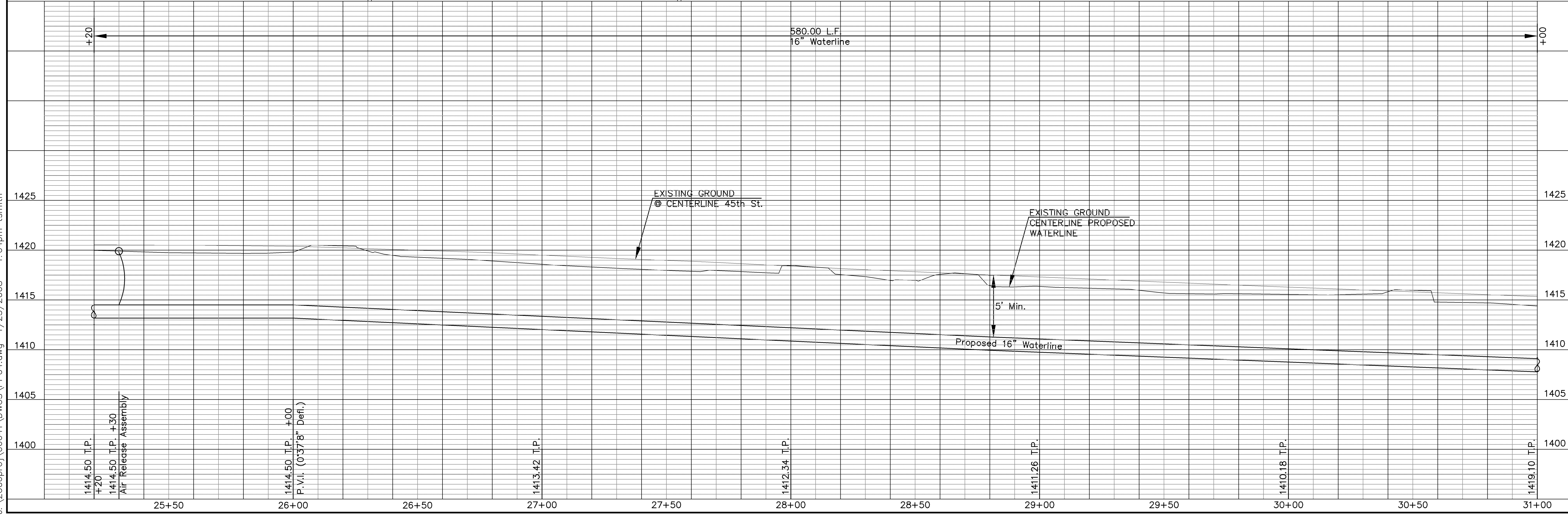


J:\2006proj\06641\DWG\PP04.dwg 1/25/2008 - 1:04pm tsmith



BM #2 Railroad Spike in south face of High Line Pole 38.32' North & 968.76' West of the N.E. Corner Sec. 29, Twp. 26-S, R-2-E. Elev. 1420.52 (NAVD 88)



No.	Date	By	Approved	Revision
1				
2				
3				
4				

CFS
Cook, Flatt & Strobel
ENGINEERS, P.A.

CFS PROJECT NO:
06-641

CITY OF WICHITA, KANSAS
45th STREET NORTH
WATER DISTRIBUTION SYSTEM IMPROVEMENTS
STA. 25+20 TO STA. 31+00

DATE: 01/25/08 DESIGNED BY: DMH DRAWN BY: FAH CHECKED BY: KKH

SHEET TITLE:
**WATERLINE
PLAN/PROFILE**

PROJECT NUMBER:
448-90218

FINAL

SHEET NUMBER:
6 of 16