

CONSTRUCTION PLANS FOR DRAINAGE IMPROVEMENTS TO SERVE NEW MARKET V ADDITION AND PEARSON COMMERCIAL ADDITION TO THE CITY OF WICHITA, KANSAS

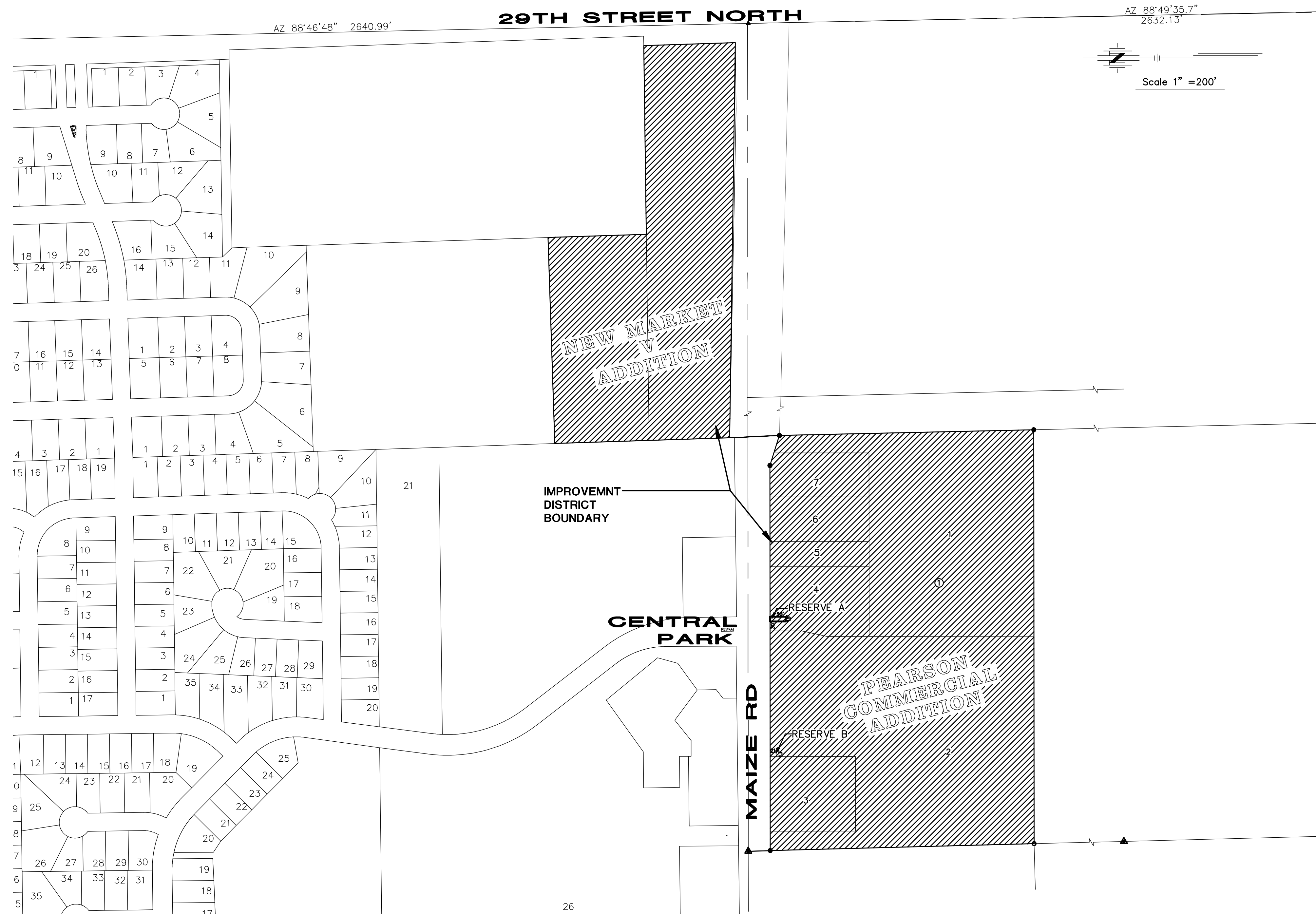
JAMES L. ARMOUR, P.E. - CITY ENGINEER

PROJECT NO. 468-83496

OCA NO. 751463

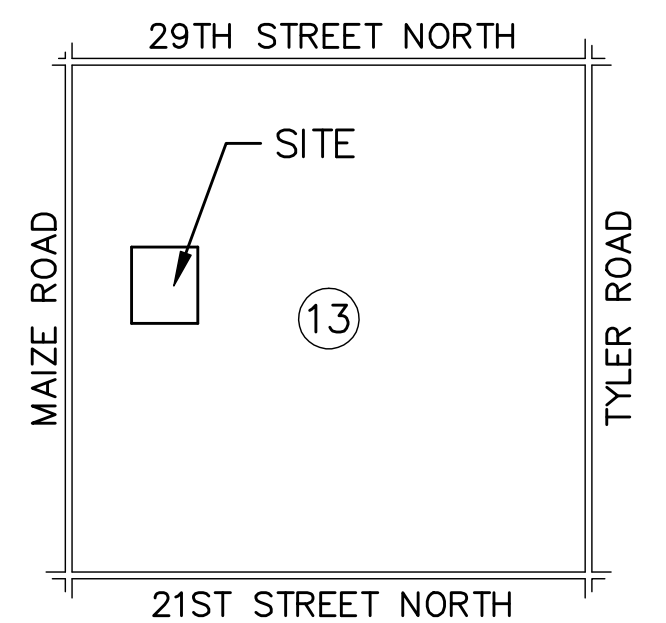
INDEX

PART A	A1-A16
PART B	B1-B9
PART C	C1-C3

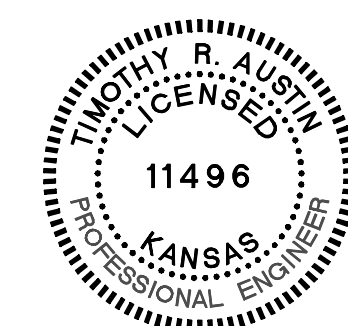


IMPROVEMENT DISTRICT LEGAL DESCRIPTION

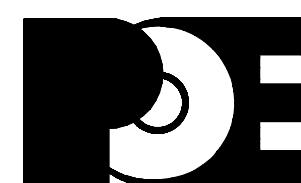
PEARSON COMMERCIAL ADDITION, TO WICHITA, SEDGWICK COUNTY, KANSAS;
AND NEW MARKET V ADDITION, AN ADDITION TO WICHITA, SEDGWICK COUNTY,
KANSAS.



LOCATION MAP
No Scale



JULY 2008



POE & ASSOCIATES, INC.
CONSULTING ENGINEERS
5940 E. Central, Suite 200 - Wichita, KS 67208-4242
Phone 316/685-4114 - FAX 316/685-4444