

NEWMARKET V ADDITION

AN ADDITION TO WICHITA, SEDGWICK COUNTY, KANSAS



SCALE: 1" = 100'

- = #4 REBAR W/PEC CAP UNLESS OTHERWISE NOTED
- △ = SECTION CORNER

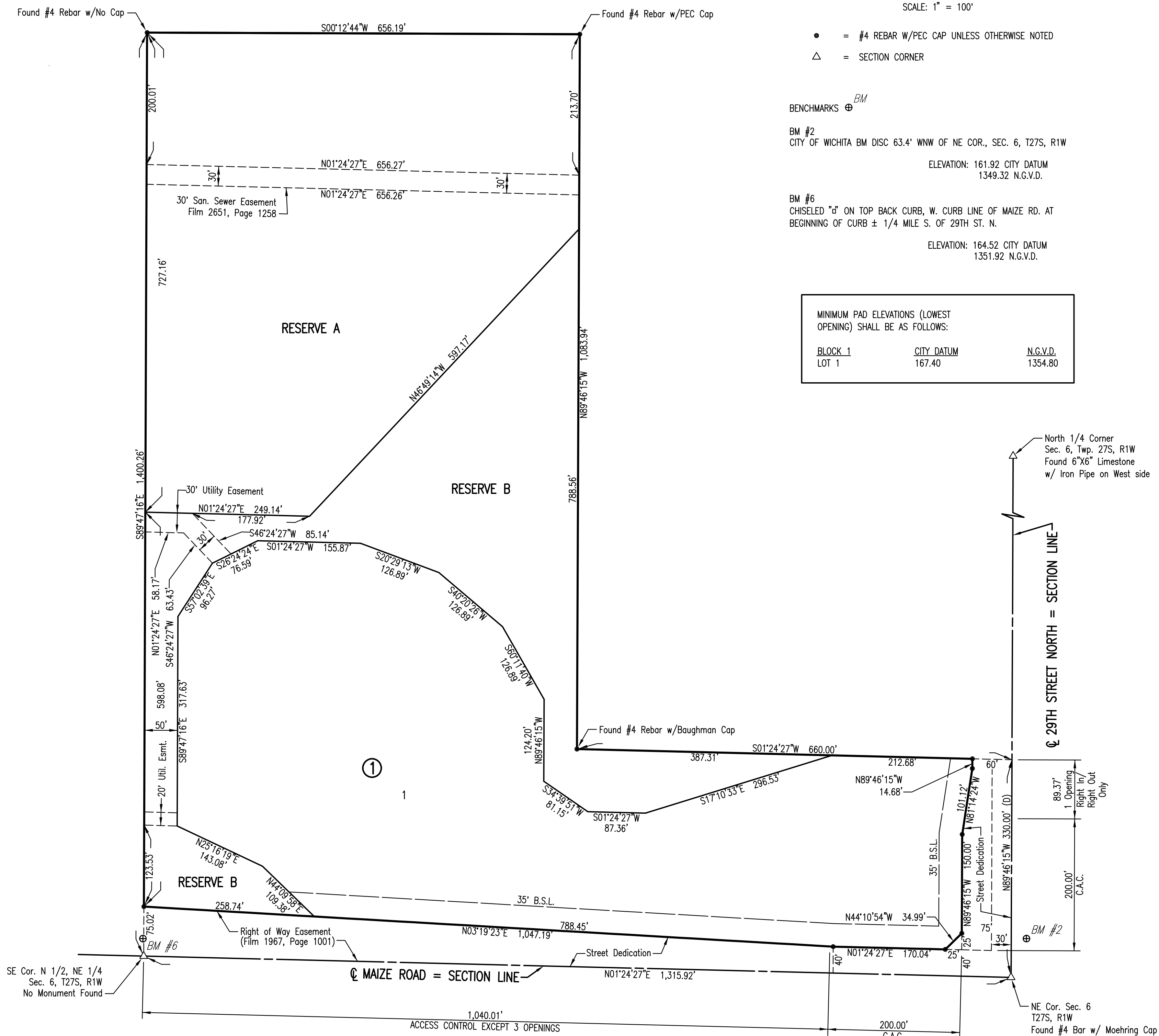
BENCHMARKS \oplus *BM*

BM #2
CITY OF WICHITA BM DISC 63.4' WNW OF NE COR., SEC. 6, T27S, R1W
ELEVATION: 161.92 CITY DATUM
1349.32 N.G.V.D.

BM #6
CHISELED "d" ON TOP BACK CURB, W. CURB LINE OF MAIZE RD. AT
BEGINNING OF CURB ± 1/4 MILE S. OF 29TH ST. N.
ELEVATION: 164.52 CITY DATUM
1351.92 N.G.V.D.

MINIMUM PAD ELEVATIONS (LOWEST
OPENING) SHALL BE AS FOLLOWS:

BLOCK 1	CITY DATUM	N.G.V.D.
LOT 1	167.40	1354.80



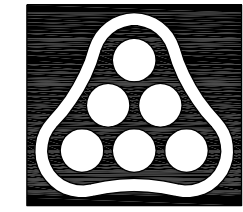
SECTION LINE NORTH = SECTION LINE

80.37' 1.0 Opening Right of Way Only

200.00' C.A.C.

NE Cor. Sec. 6
T27S, R1W
Found #4 Bar w/ Moehring Cap

Sowed 06-19-2008 4:47:04 PM by SW
Plot Scale 1:100 07-01-2008 10:26:58 AM by AEE
C:\2008\04274\003\04274-003-C-Plot



No.	Revision	By	Date
CITY OF WICHITA, KANSAS JAMES L. ARMOUR, P.E. - CITY ENGINEER NEWMARKET V ADDITION STORM WATER SEWER & POND PLAT CITY OF WICHITA PROJECT NO. 468-84396 Professional Engineering Consultants, P.A. 303 S. TOPEKA • WICHITA, KANSAS 67202 316-262-2691 • FAX 316-262-3003			
Designed by	BER	Job No.	35-04274-042
Drawn by	NCL	Date	JULY 2008
			Sht. A16 of A16