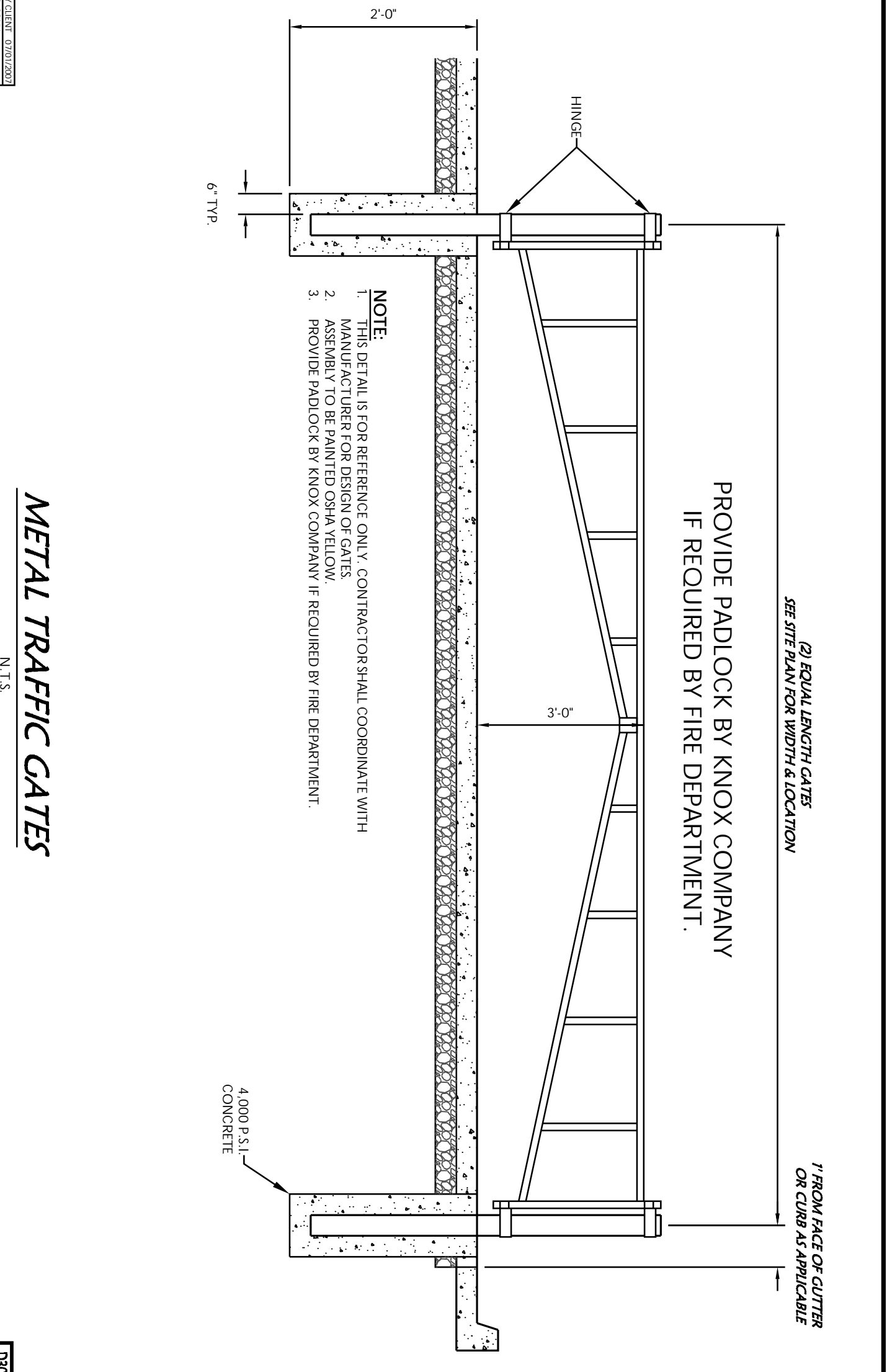


TRENCH AND BEDDING DETAILS

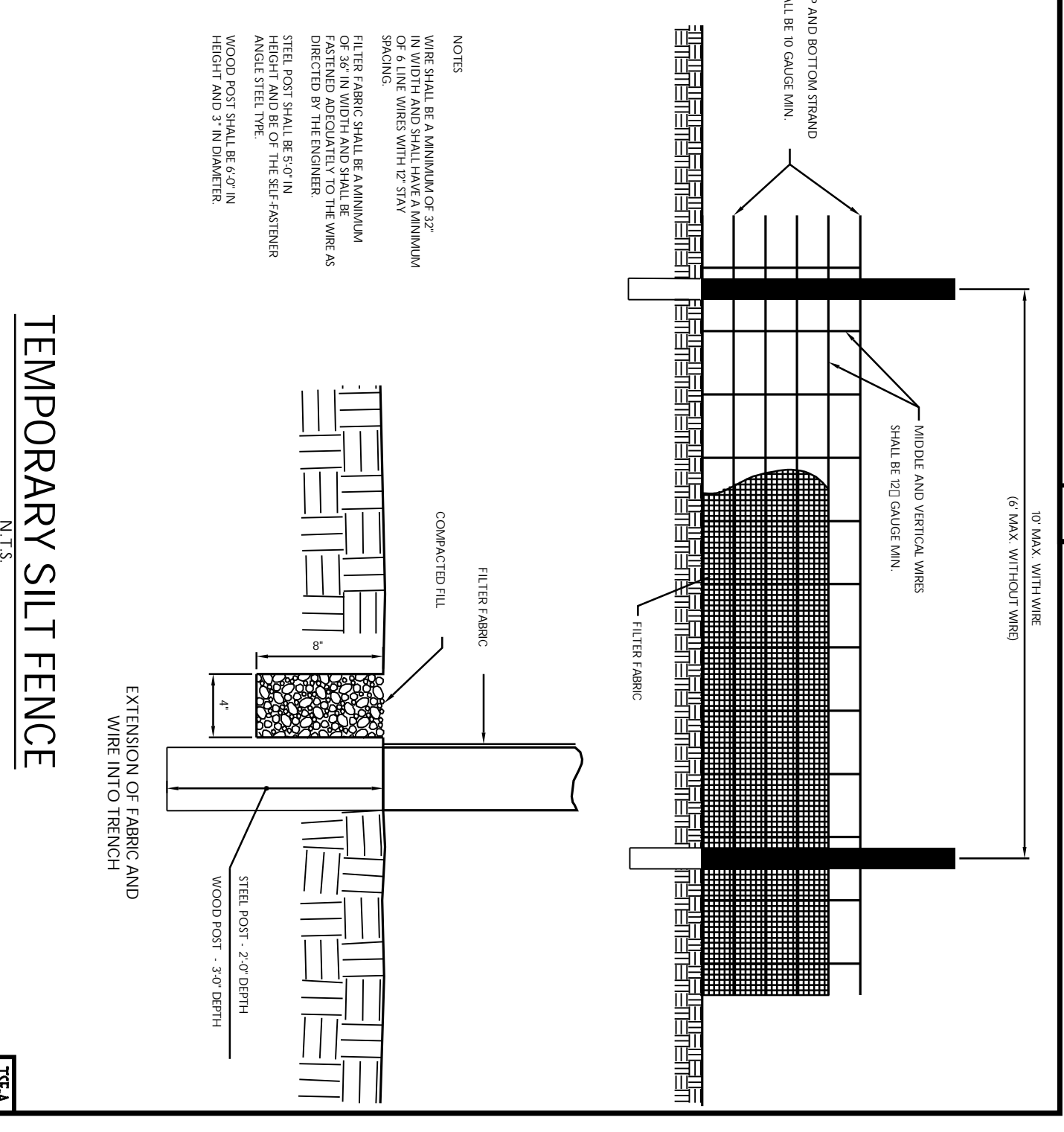
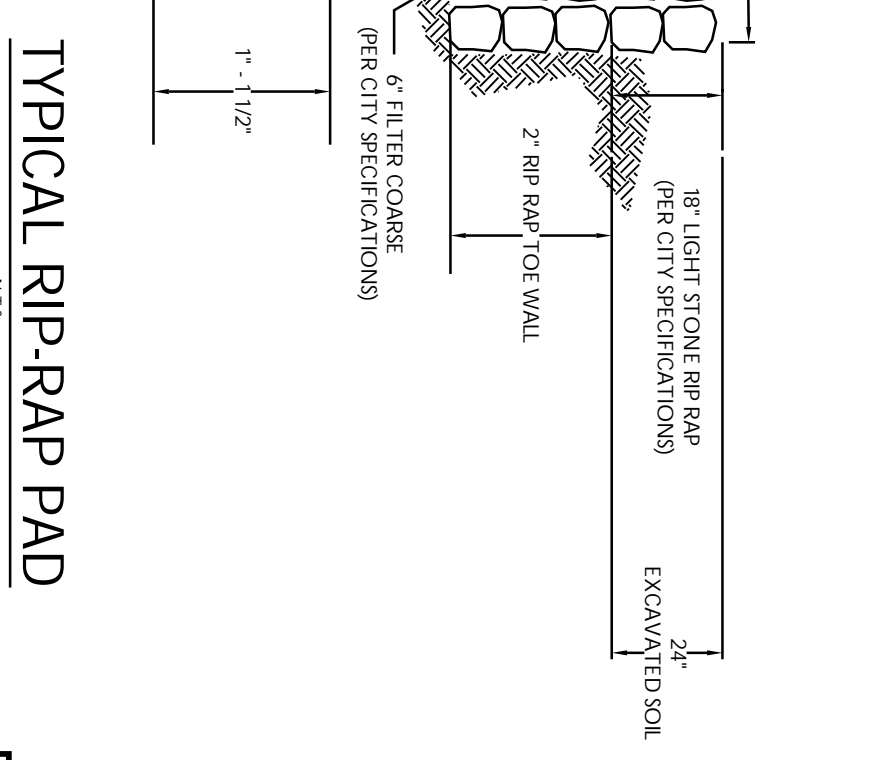
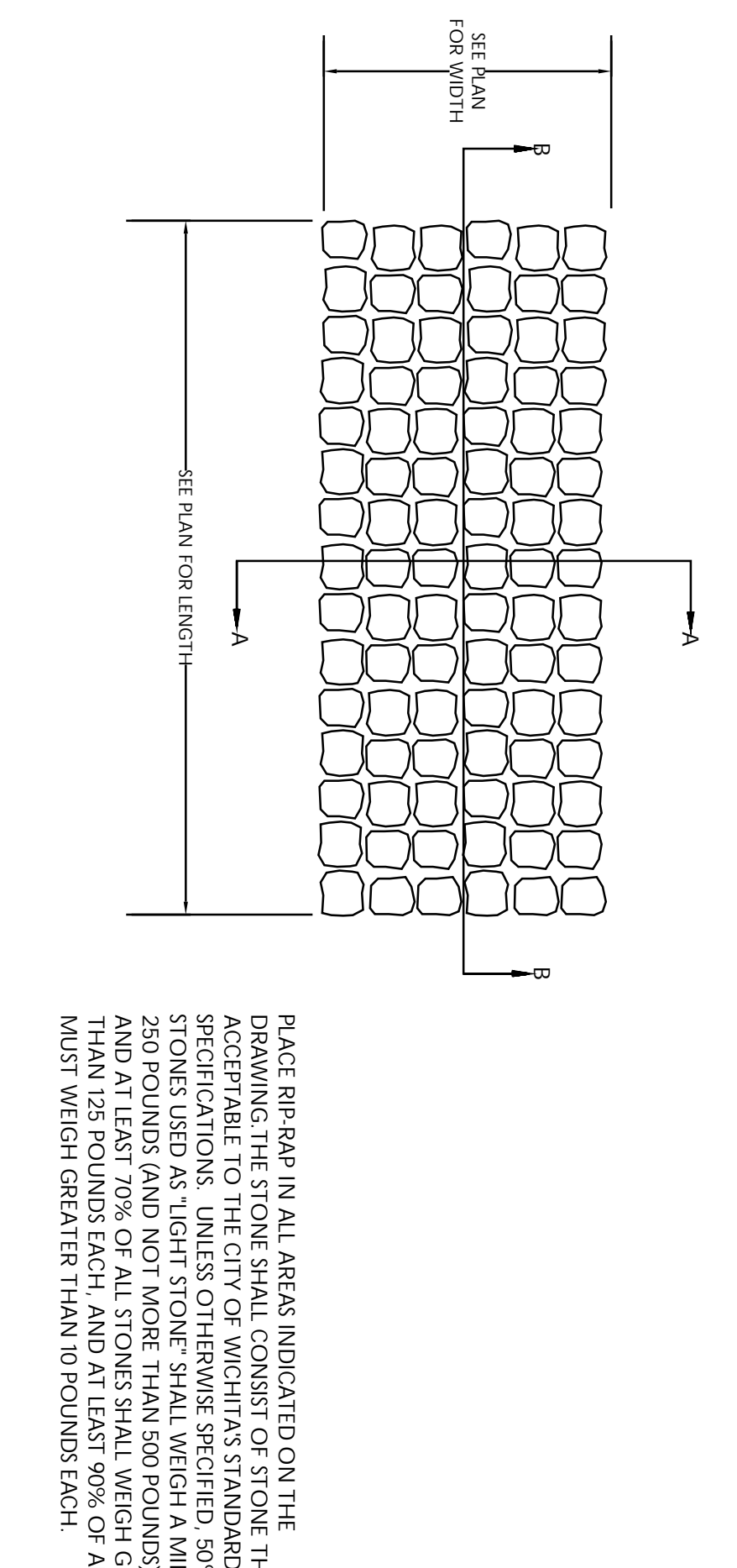
TABLE 1.1. CLASSES OF EMBEDEDMENT AND BACKFILL MATERIALS.

ASTM D 2921 MATERIAL CLASS	ASTM D 2921 USE GROUP	MATERIAL TYPE	# PASSING	ATTERBURG LIMITS
IA	NON	MANUFACTURED STONE GRANULES	1 1/2" NI. NO. 4	NO. 200 LL. PI
IB	NON	MANUFACTURED STONE GRANULES	100% < 1.0"	NON PLASTIC
I	GW	CONCRETE GRANULES	100% < 1.0"	NON PLASTIC
II	SW	CONCRETE GRANULES	100% < 1.0"	NON PLASTIC
III	GW	CONCRETE GRANULES	100% < 1.0"	NON PLASTIC
IV	SW	CONCRETE GRANULES	100% < 1.0"	NON PLASTIC
VA	CL	FINE GRAINED SOILS	100%	< 4% OR < 3% LINE < 7% OR < 5% LINE < 17% OR < 12% LINE

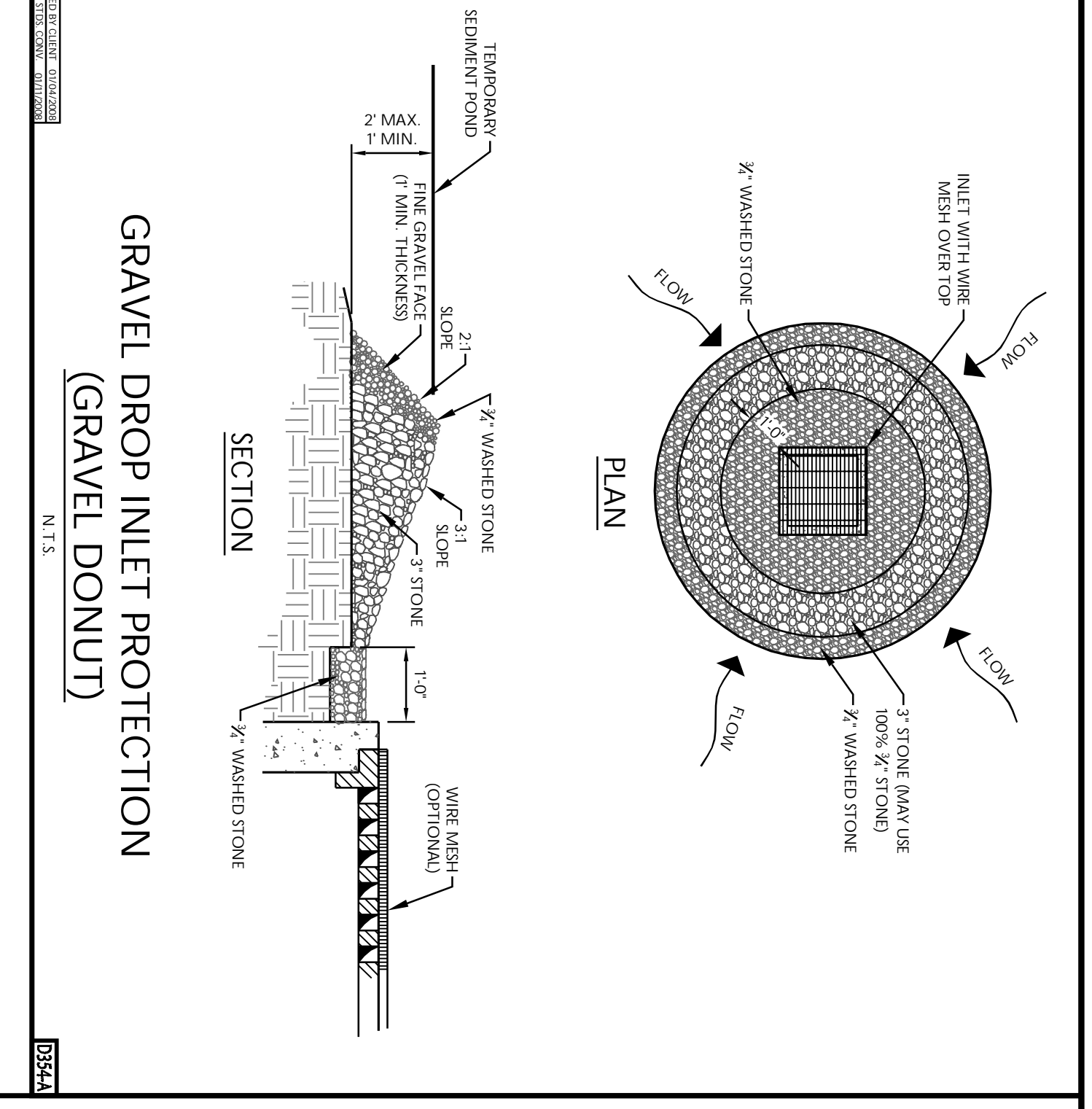
- GENERAL NOTES:
1. BEDDING SHALL BE GRADDED TO A MINIMUM OF 1% SLOPE. LOCAL CORRECTIONS WITHIN THE CHANNEL BED SHALL BE MADE TO MAINTAIN A MINIMUM OF 1% SLOPE. ALL MATERIALS SHALL BE COMPACTED TO THE STANDARD SPECIFICATION FOR THE MATERIAL TO BE USED FOR BEDDING. (REFER TO THE STANDARD SPECIFICATION FOR THE MATERIAL TO BE USED FOR BEDDING.)
 2. MANHOLES SHALL BE WORKED AROUND THE PERIPHERY OF THE TRENCH AND SHALL BE CONSTRUCTED TO THE STANDARD SPECIFICATION FOR THE MATERIAL TO BE USED FOR BEDDING. (REFER TO THE STANDARD SPECIFICATION FOR THE MATERIAL TO BE USED FOR BEDDING.)
 3. ALL TRENCHES SHALL BE CONSTRUCTED TO THE STANDARD SPECIFICATION FOR THE MATERIAL TO BE USED FOR BEDDING. (REFER TO THE STANDARD SPECIFICATION FOR THE MATERIAL TO BE USED FOR BEDDING.)
 4. ALL TRENCHES SHALL BE CONSTRUCTED TO THE STANDARD SPECIFICATION FOR THE MATERIAL TO BE USED FOR BEDDING. (REFER TO THE STANDARD SPECIFICATION FOR THE MATERIAL TO BE USED FOR BEDDING.)
 5. ALL TRENCHES SHALL BE CONSTRUCTED TO THE STANDARD SPECIFICATION FOR THE MATERIAL TO BE USED FOR BEDDING. (REFER TO THE STANDARD SPECIFICATION FOR THE MATERIAL TO BE USED FOR BEDDING.)
 6. ALL TRENCHES SHALL BE CONSTRUCTED TO THE STANDARD SPECIFICATION FOR THE MATERIAL TO BE USED FOR BEDDING. (REFER TO THE STANDARD SPECIFICATION FOR THE MATERIAL TO BE USED FOR BEDDING.)
 7. ALL TRENCHES SHALL BE CONSTRUCTED TO THE STANDARD SPECIFICATION FOR THE MATERIAL TO BE USED FOR BEDDING. (REFER TO THE STANDARD SPECIFICATION FOR THE MATERIAL TO BE USED FOR BEDDING.)
 8. ALL TRENCHES SHALL BE CONSTRUCTED TO THE STANDARD SPECIFICATION FOR THE MATERIAL TO BE USED FOR BEDDING. (REFER TO THE STANDARD SPECIFICATION FOR THE MATERIAL TO BE USED FOR BEDDING.)
 9. ALL TRENCHES SHALL BE CONSTRUCTED TO THE STANDARD SPECIFICATION FOR THE MATERIAL TO BE USED FOR BEDDING. (REFER TO THE STANDARD SPECIFICATION FOR THE MATERIAL TO BE USED FOR BEDDING.)
 10. ALL TRENCHES SHALL BE CONSTRUCTED TO THE STANDARD SPECIFICATION FOR THE MATERIAL TO BE USED FOR BEDDING. (REFER TO THE STANDARD SPECIFICATION FOR THE MATERIAL TO BE USED FOR BEDDING.)
 11. ALL TRENCHES SHALL BE CONSTRUCTED TO THE STANDARD SPECIFICATION FOR THE MATERIAL TO BE USED FOR BEDDING. (REFER TO THE STANDARD SPECIFICATION FOR THE MATERIAL TO BE USED FOR BEDDING.)
 12. ALL TRENCHES SHALL BE CONSTRUCTED TO THE STANDARD SPECIFICATION FOR THE MATERIAL TO BE USED FOR BEDDING. (REFER TO THE STANDARD SPECIFICATION FOR THE MATERIAL TO BE USED FOR BEDDING.)
 13. ALL TRENCHES SHALL BE CONSTRUCTED TO THE STANDARD SPECIFICATION FOR THE MATERIAL TO BE USED FOR BEDDING. (REFER TO THE STANDARD SPECIFICATION FOR THE MATERIAL TO BE USED FOR BEDDING.)
 14. ALL TRENCHES SHALL BE CONSTRUCTED TO THE STANDARD SPECIFICATION FOR THE MATERIAL TO BE USED FOR BEDDING. (REFER TO THE STANDARD SPECIFICATION FOR THE MATERIAL TO BE USED FOR BEDDING.)



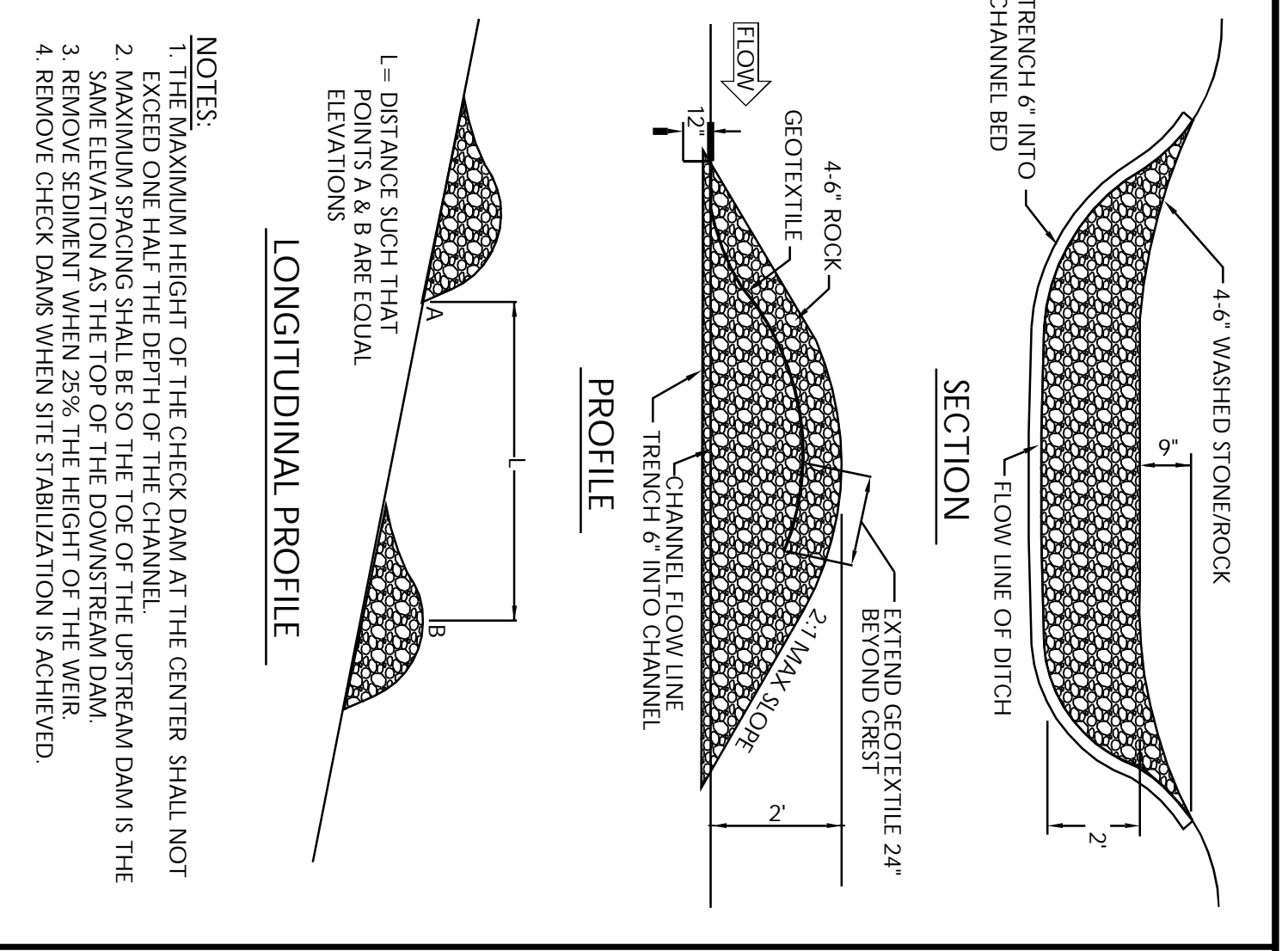
METAL TRAFFIC GATES



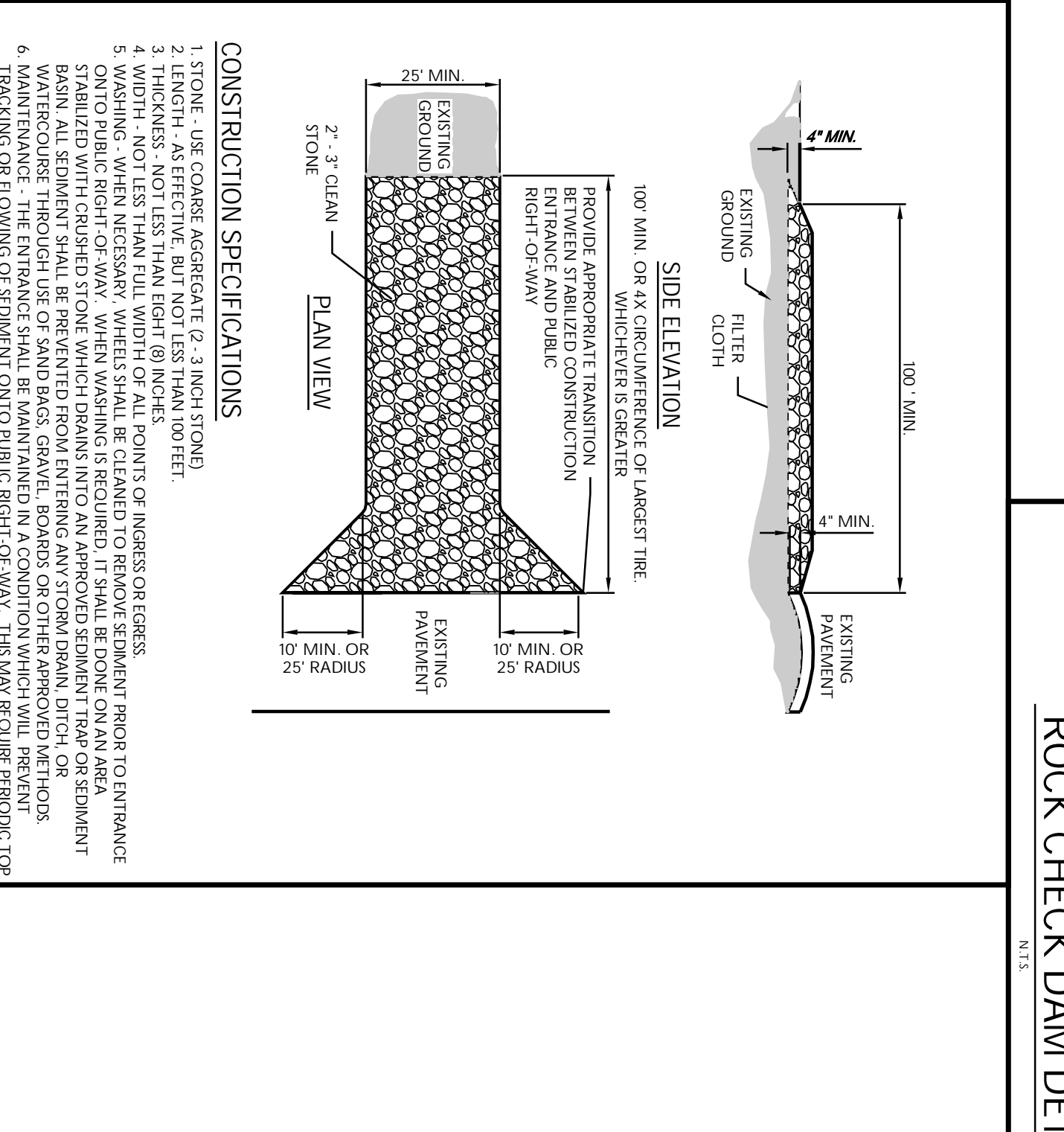
TEMPORARY SILT FENCE



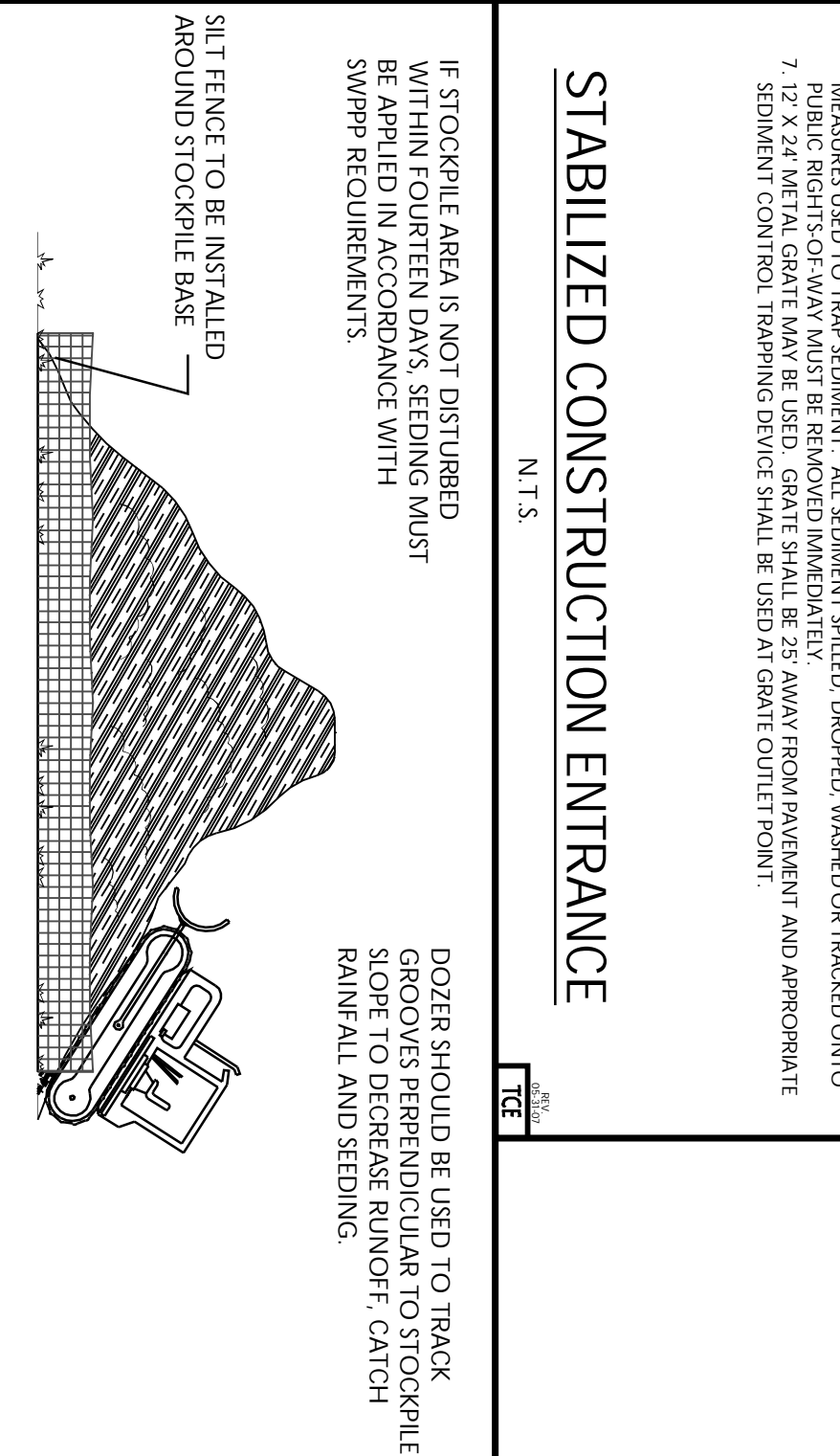
GRAVEL DROP INLET PROTECTION (GRAVEL DONUT)



ROCK CHECK DAM DETAIL



STABILIZED CONSTRUCTION ENTRANCE



STOCKPILE DETAIL