

GENERAL NOTES

- UNLESS SHOWN OR STATED OTHERWISE ON THESE DRAWINGS, MATERIALS AND CONSTRUCTION SHALL BE IN ACCORDANCE WITH CITY OF WICHITA STANDARD SPECIFICATIONS.
- CONTRACTOR WILL BE REQUIRED TO PROVIDE A MINIMUM ADVANCE NOTICE OF SEVENTY-TWO (72) HOURS TO UTILITY COMPANIES PRIOR TO STARTING ANY EXCAVATION AS FOLLOWS:
 KANSAS ONE-CALL 1-800-344-7233
 or 687-2470 (LOCAL WICHITA)
- THE CONTRACTOR MUST NOTIFY THE FOLLOWING IN CASE OF AN EMERGENCY:
 SBC (TELEPHONE) 800-870-8390
 COX COMMUNICATIONS (CABLE) 262-0661
 KANSAS GAS SERVICE (GAS) 832-3101
 CITY OF WICHITA WATER & SEWER 262-6000
 WESTAR (ELECTRIC) 261-6734
 AQUILA (GAS) 800-303-0357
- THE CONTRACTOR SHALL BE RESPONSIBLE FOR PRESERVING PROPERTY IRONS. THE CONTRACTOR WILL BE REQUIRED TO RE-ESTABLISH ANY PROPERTY IRONS WHICH ARE DAMAGED OR DESTROYED BY HIS CONSTRUCTION OPERATIONS. SUCH IRONS SHALL BE RE-ESTABLISHED BY A LICENSED LAND SURVEYOR IN ACCORDANCE WITH STATE LAWS.
- EXISTING UTILITIES AND THEIR LOCATIONS, AS SHOWN ON THE PLANS, REPRESENT THE BEST INFORMATION OBTAINABLE FOR DESIGN. LOCATION INFORMATION HAS BEEN OBTAINED FROM THE VARIOUS UTILITY COMPANIES AND IS EITHER FROM COMPANY RECORD DRAWINGS OR COMPANY PROVIDED FIELD LOCATIONS. THE SALVATION ARMY'S RECORDS REGARDING EXISTING UTILITIES AND THEIR LOCATIONS HAVE ALSO BEEN INCORPORATED INTO THE PLANS. THE PLAN LOCATIONS SHOWN ARE NOT GUARANTEED. ADDITIONAL EXISTING UTILITIES MAY ALSO BE ENCOUNTERED.
- RUBBLE FROM THE REMOVAL OF MISCELLANEOUS STRUCTURES AND EXCESS EXCAVATION WHICH IS TO BE WASTED SHALL BE DISPOSED OF ON SITES TO BE PROVIDED BY THE CONTRACTOR. THESE SITES SHALL BE APPROVED BY THE ENGINEER AS TO SUITABILITY, APPEARANCE AND SITE LOCATION. LOCATIONS THAT, IN THE OPINION OF THE ENGINEER, WILL LEAVE AN UNSIGHTLY APPEARANCE WILL NOT BE APPROVED. ALL DISPOSAL SITES MUST BE APPROVED BY THE KANSAS DEPARTMENT OF HEALTH AND ENVIRONMENT. MATERIAL EITHER STOCKPILED OR DISPOSED OF IN A FLOOD PLAIN WOULD REQUIRE A KANSAS STATE BOARD OF AGRICULTURE PERMIT. ANY MATERIAL DUMPED IN WATERS OF THE UNITED STATES OR WETLANDS IS SUBJECT TO U.S. CORPS OF ENGINEERS PERMITTING REGULATIONS. ANY MATERIAL BURIED OR STOCKPILED BEYOND APPROVED CONSTRUCTION LIMITS WOULD REQUIRE ADDITIONAL ARCHAEOLOGICAL INVESTIGATIONS UNLESS BURIED IN A PREVIOUSLY APPROVED BORROW LOCATION.
- COST OF EXCAVATION, HAULING, AND DUMPING OF EXCESS EXCAVATION SHALL BE SUBSIDIARY TO THE PROJECT.
- A PORTION OF EXCESS EXCAVATED MATERIAL SHALL BE MOUNDED AROUND MANHOLES WHICH EXTEND MORE THAN ONE (1) FOOT ABOVE THE EXISTING GROUND. SUCH MOUNDS SHALL BE CONSTRUCTED WITH A SIX (6) FOOT DIAMETER FLAT TOP WITH 4 TO 1 SIDE SLOPES DOWN TO THE ORIGINAL GROUND. THE ELEVATION OF THE FLAT TOP OF THE MOUND SHALL BE 0.4 FOOT BELOW THE TOP OF THE MANHOLE.
- ALL STUBS AND PLUGGED PIPES SHALL BE LOCATED WITH GREEN PLASTIC TAPE IN THE SAME MANNER AS RISERS.
- CONNECTING TO EXISTING MANHOLES:
 PRIOR TO LAYING SEWER LINES USING EXISTING STUBS IN EXISTING MANHOLES, THE CONTRACTOR SHALL EXPOSE AND VERIFY THE ELEVATION, GRADE AND ALIGNMENT OF EXISTING STUBS AND NOTIFY THE ENGINEER OF ANY DEVIATION FROM THE PLAN. WHERE CONNECTION TO AN EXISTING MANHOLE THAT DOES NOT HAVE AN EXISTING STUB OR THE STUB IS UNUSABLE DUE TO ELEVATION GRADE OR ALIGNMENT, THE CONTRACTOR SHALL BORE OUT INTO EXISTING MANHOLE WALL TO MAKE CONNECTION USING APPROVED WATER STOP GASKET, AND RESHAPE THE EXISTING MANHOLE INVERT TO PROVIDE SMOOTH FLOW. THE COST OF CONNECTING TO EXISTING MANHOLES IS INCIDENTAL TO THE PROJECT.
- TREES AND SHRUBS IN EASEMENTS WHICH ARE IN DIRECT CONFLICT WITH PROPOSED CONSTRUCTION SHALL BE TRIMMED BY THE CONTRACTOR WITH THE ENGINEER'S APPROVAL. TREES AND SHRUBS WHICH ARE NOT IN DIRECT CONFLICT WITH PROPOSED NEW CONSTRUCTION SHALL BE SAVED AND PROTECTED FROM DAMAGE.
- ALL AREAS DISTURBED BY CONSTRUCTION OF THE PROPOSED IMPROVEMENTS SHALL BE RESTORED WITH THE SAME GROUND COVER AS EXISTING. LAWN AREAS DISTURBED BY CONSTRUCTION SHALL BE SEED OR SOODED TO MATCH EXISTING GROUND COVER. MULCH, SAND OR OTHER GROUND COVER WITHIN PLAY AREAS DISTURBED BY CONSTRUCTION SHALL BE REPLACED TO MATCH EXISTING. RESTORATION OF DISTURBED AREAS SHALL INCLUDE, BUT NOT BE LIMITED TO, TOP SOIL PREPARATION, SEEDING, MULCHING, REPLACEMENT OF SAND OR OTHER GROUND COVER IN PLAY AREAS AND/OR RESEEDING. ALL COSTS FOR THIS WORK SHALL BE SUBSIDIARY TO THE LUMP SUM PRICE FOR "SITE CLEARING AND RESTORATION".
- CONTRACTOR SHALL COORDINATE ALL WORK, INCLUDING IRRIGATION REPAIRS, WITH OWNER'S REPRESENTATIVE. CONTACT RON WHITED AT 641-5535. IRRIGATION REPAIR AND/OR REPLACEMENT SHALL BE SUBSIDIARY TO SITE CLEARING AND RESTORATION.
- TREES TO BE REMOVED ARE MARKED WITH AN 'X'. ALL TREES WHICH, IN THE OPINION OF THE FIELD ENGINEER CAN BE SAVED, SHALL BE SAVED.
- THE SANITARY SEWER MAIN SHALL BE TELEVISED AND AIR TESTED PRIOR TO MAKING ANY SERVICE CONNECTIONS TO THE NEW MAIN.
- THE CONTRACTOR SHALL OBTAIN A SEWER SERVICE CONNECTION PERMIT FROM THE CITY OF WICHITA OFFICE OF CENTRAL INSPECTION PRIOR TO MAKING ANY SERVICE CONNECTIONS TO THE SANITARY SEWER MAIN. CONTACT BETTY ROARK AT 268-4341.
- ALL EXISTING SERVICE LINES TO REMAIN IN PLACE AND BE CONNECTED TO THE NEW SANITARY SEWER MAIN SHALL REQUIRE TV INSPECTION AND ACCEPTANCE BY THE CITY OF WICHITA OFFICE OF CENTRAL INSPECTION PRIOR TO CONNECTION BEING MADE.
- SANITARY SEWER SERVICES SHALL BE INSTALLED BY A LICENSED DRAIN LAYER.

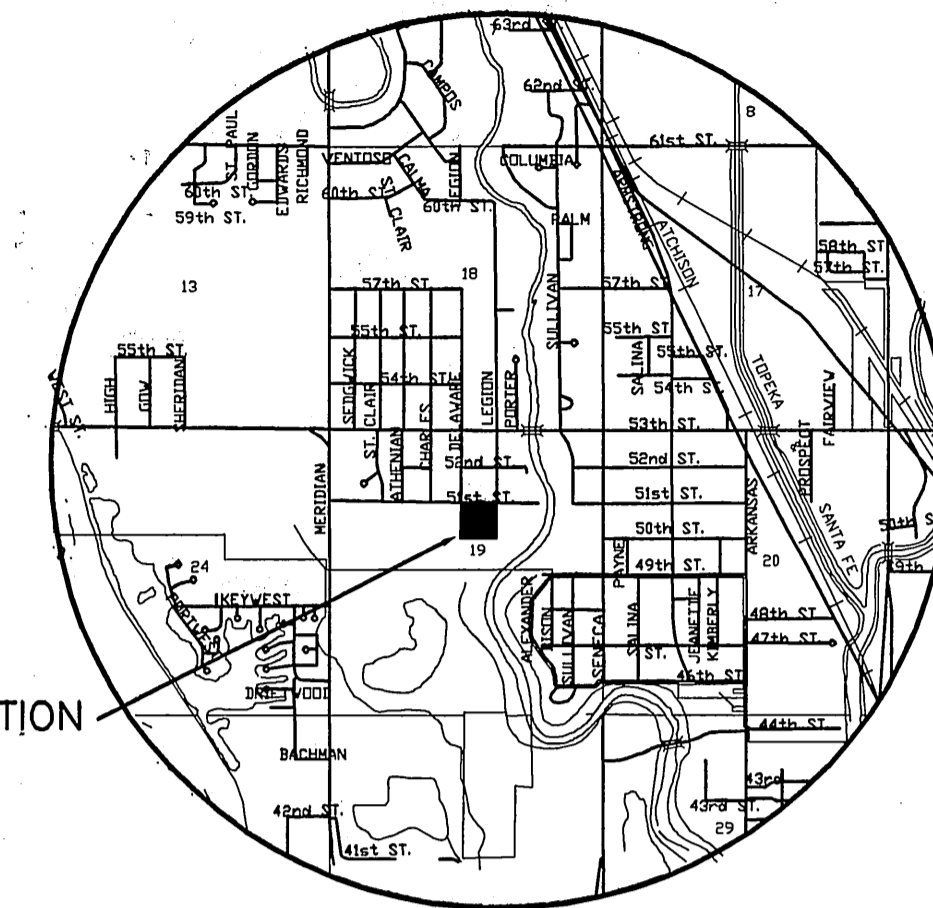
PHASE 2 PRIVATE SANITARY SEWER PLANS FOR SALVATION ARMY - HIAWATHA CAMPUS

LOT 1, BLOCK 1 CAMP HIAWATHA ADDITION

CITY OF WICHITA, KANSAS
 JAMES L. ARMOUR, CITY ENGINEER

PROJECT NO. 1851 PPS
 OCA 607861

Released 5/21/08
 JDL 5/23/08



SITE LOCATION

LOCATION MAP

INDEX TO DRAWINGS

SHEET NO.	DESCRIPTION
1	TITLE SHEET
2	MANHOLE DETAILS
3	REMOVAL PLAN
4	SANITARY SEWER SERVICE
5	LINE 1
6	BUBBLE MAP
7-8	EROSION CONTROL DETAILS
9	FINAL PLAT

BENCHMARKS

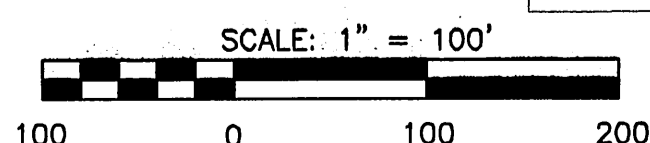
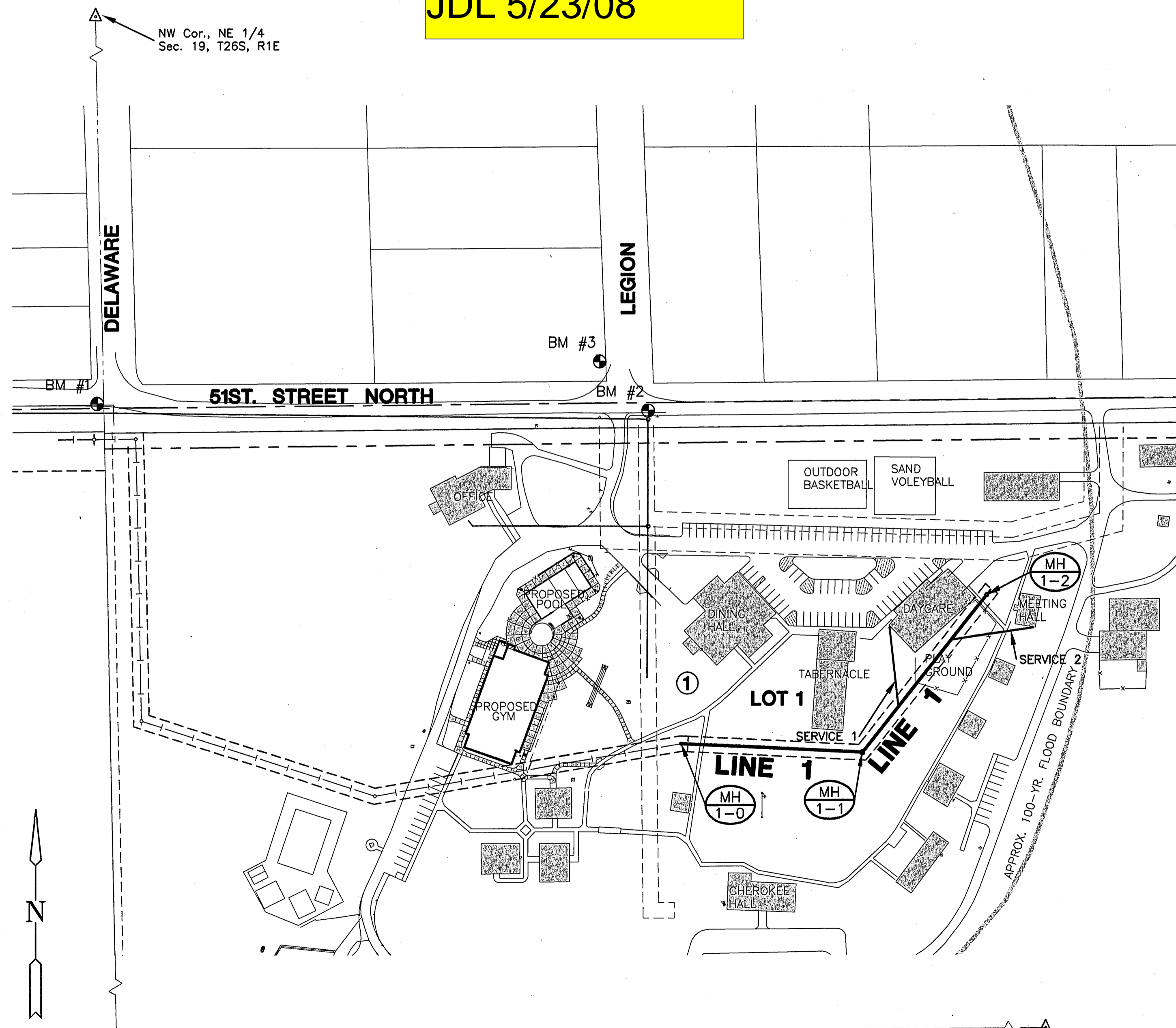
- BM #1 PK Nail and Washer at the Intersection of Delaware and 51st Street North. 3 feet north of the south edge of 51st Street. ELEV.= 143.86'
- BM #2 PK Nail and Washer at the southeast side of Legion and 51st Street North. 3 feet north of the south edge of 51st. ELEV.= 141.44'
- BM #3 RR Spike SE face of power pole at northwest corner of Legion and 51st Street North. ELEV.= 142.39'

APPROVED AS NOTED
 BY CITY ENGINEER OF WICHITA

SANITARY SEWERS VRH 3/24/08

NOTE TO CONTRACTOR

INSPECTION AND TESTING FOR THIS PROJECT IS TO BE PROVIDED BY A LICENSED CONSULTING ENGINEERING FIRM UNDER CONTRACT WITH THE OWNER/DEVELOPER. SAID INSPECTION TO BE IN ACCORDANCE WITH THE CITY OF WICHITA STANDARD CONSTRUCTION ENGINEERING PRACTICES AND CERTIFIED BY A LICENSED PROFESSIONAL ENGINEER. NO WORK SHALL BE PERFORMED IN DEDICATED EASEMENTS OR THE PUBLIC RIGHT-OF-WAY BY THE CONTRACTOR WITHOUT SUCH INSPECTION NOR SHALL ANY WORK BE COMMENCED IN DEDICATED EASEMENTS OR PUBLIC RIGHT-OF-WAY WITHOUT WRITTEN AUTHORIZATION BY THE CITY ENGINEER.



SE Cor., NE 1/4
 Sec. 19, T26S, R1E

MKEC
 ENGINEERING
 CONSULTANTS, INC.
 411 N. WEBB ROAD
 WICHITA, KS. 67206
 316-684-9600

SCOTT R. SEWIS
 LICENSED PROFESSIONAL ENGINEER
 STATE OF KANSAS
 3/24/08

PHASE 2 SANITARY SEWER PLANS FOR
SALVATION ARMY
 HIAWATHA CAMPUS

TITLE SHEET
 SHEET TITLE
06635
 PROJECT NUMBER

SRS | TKL | MAB
 DESIGNED | DRAWN | CHECKED

ISSUED
February 2008
 REVISED
 As BUILT: 5-15-08
 Contractor: Mies Const.
 Inspector: Pat Hayes (CED)

SHEET NO.
1 of 9

PLOTTED: March 24, 2008 @ 02:17PM
 J:\CIVIL\06635\DWG\SWA\PHASE 2\06635B.DWG

**PHASE 2 SANITARY SEWER PLANS FOR
SALVATION ARMY
HIAWATHA CAMPUS**

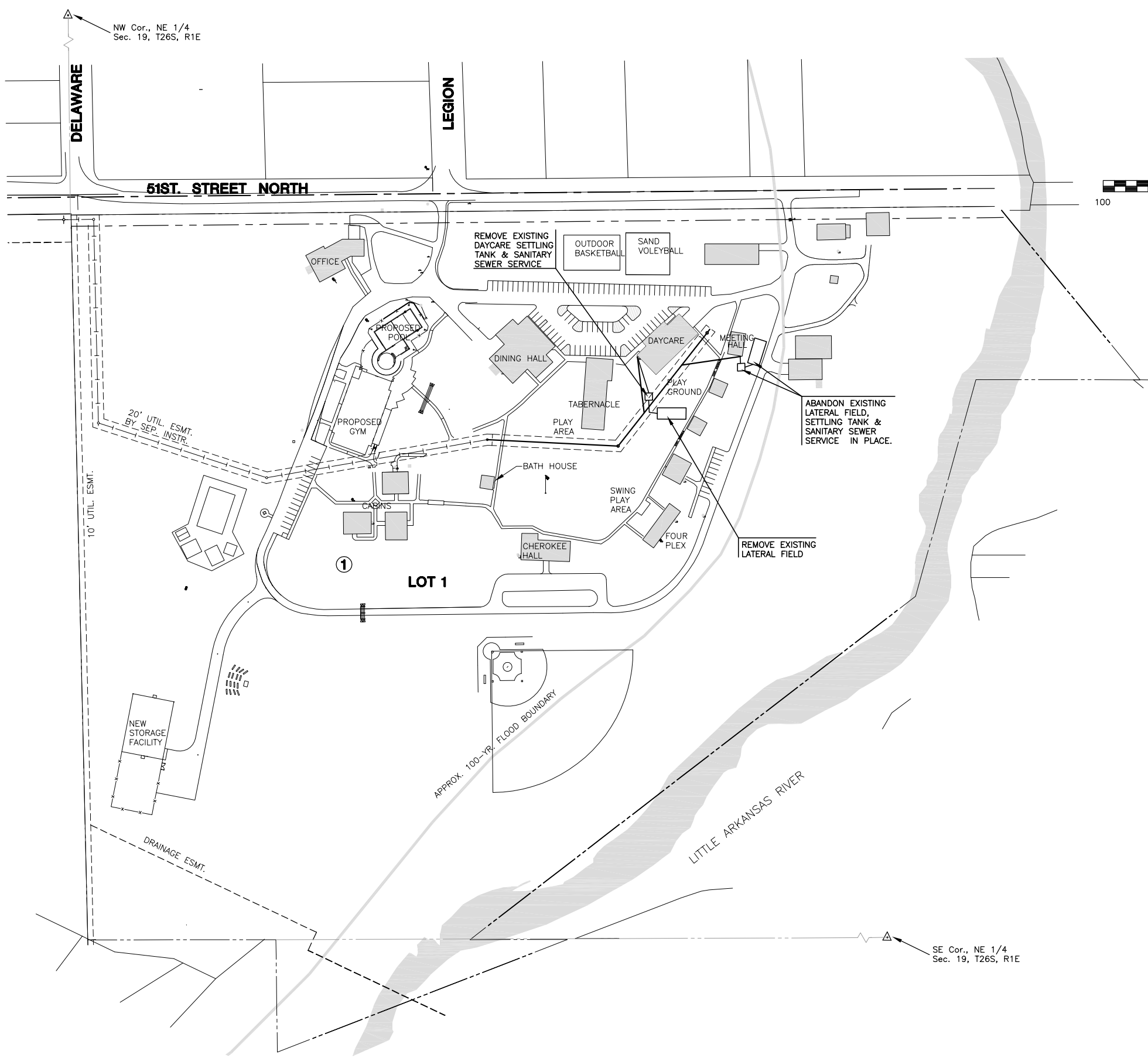
**REMOVAL
PLAN**

SHEET TITLE
06635
PROJECT NUMBER

DESIGN BY
SRS
DRAWN BY
TKL
CHECKED BY
MAB

ISSUED
February 2008
REVISED
**As Built: 5-15-08
No Changes Made.**

SHEET NO.
3 of 9



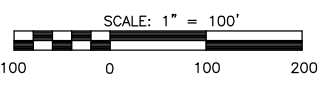
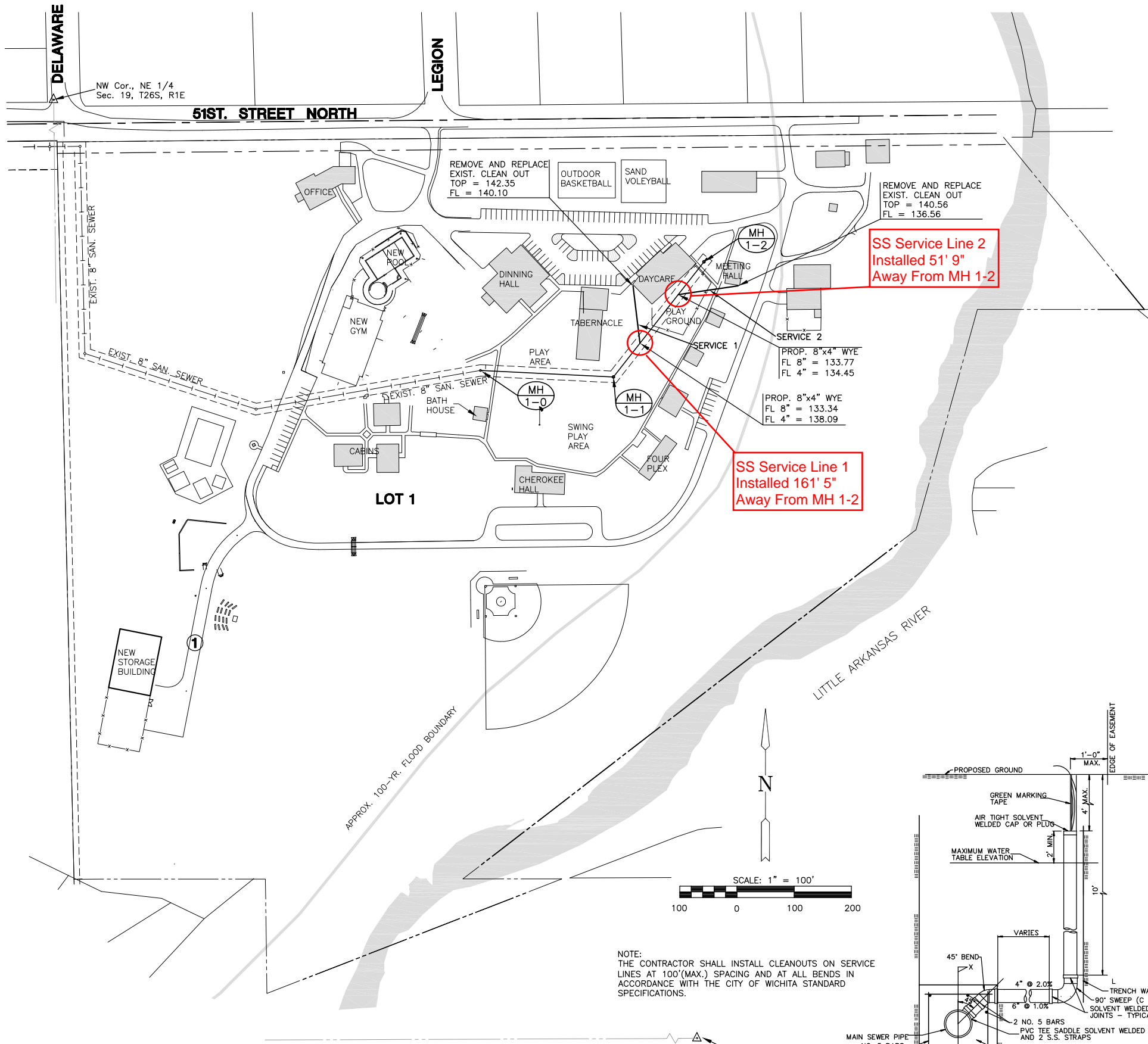
NOTE:

1. THE LOCATION OF EXISTING LATERAL FIELDS AND UTILITIES SHOWN ON THE DRAWINGS IS BASED ON INFORMATION PROVIDED IN PART BY OTHERS. THE EXISTING UNDERGROUND INSTALLATIONS SUCH AS LATERAL FIELDS, WATER MAINS, GAS MAINS, SEWERS, TELEPHONE LINES, POWER LINES AND BURIED STRUCTURES IN THE VICINITY OF THE WORK TO BE DONE HEREUNDER ARE INDICATED ON THE DRAWINGS ONLY TO THE EXTENT SUCH INFORMATION HAS BEEN MADE AVAILABLE TO OR DISCOVERED BY THE SURVEYOR IN PREPARING THIS DRAWING. THERE IS NO GUARANTY AS TO THE ACCURACY OR COMPLETENESS OF SUCH INFORMATION, AND ALL RESPONSIBILITY FOR THE ACCURACY AND COMPLETENESS THEREBY IS EXPRESSLY DISCLAIMED.
2. MANHOLES AND TANKS DESIGNATED FOR REMOVAL SHALL BE COMPLETELY REMOVED IN ACCORDANCE WITH THE CITY OF WICHITA STANDARD SPECIFICATIONS. ALL ABANDONED PIPES WHICH REMAIN AFTER THE MANHOLE OR TANK HAS BEEN REMOVED SHALL BE PLUGGED. THE EXCAVATION SHALL BE BACKFILLED IN ACCORDANCE WITH THE REQUIREMENTS AS SPECIFIED IN THE CITY OF WICHITA STANDARD SPECIFICATIONS FOR SEWER TRENCH BACKFILL.
3. MANHOLES AND TANKS DESIGNATED TO BE ABANDONED SHALL HAVE THE TOP FOUR FEET REMOVED AND THE REMAINING PORTION OF THE MANHOLE OR TANK SHALL BE FILLED WITH SAND, FLUSHED AND VIBRATED IN ACCORDANCE WITH THE CITY OF WICHITA STANDARD SPECIFICATIONS. ALL PIPES IN THE MANHOLE WHICH ARE TO BE ABANDONED SHALL BE PLUGGED PRIOR TO FILLING THE MANHOLE WITH MATERIAL SIMILAR TO THE ADJACENT SURFACE AND COMPACTED TO A DENSITY OF 90% OF THE STANDARD DENSITY.
4. BOTH ENDS OF ALL PIPES TO BE ABANDONED IN PLACE SHALL BE PLUGGED IN ACCORDANCE WITH THE CITY OF WICHITA STANDARD SPECIFICATIONS. PIPES ABANDONED IN PLACE HAVING DIAMETERS GREATER THAN 15" SHALL BE FILLED WITH SAND OR GROUT AND PLUGGED.
5. IN THE EVENT THE LEAD LINE OR THE LATERALS FROM SEPTIC SYSTEMS ARE ENCOUNTERED IN THE CONSTRUCTION OF THE SEWER, AND THE LATERAL FIELD IS DESIGNATED FOR ABANDONMENT OR REMOVAL, THE CONTRACTOR SHALL REMOVE THE SEWER LATERAL PIPING AND RELATED APPURTENCES IN CONFLICT WITH THE SEWER MAIN CONSTRUCTION AND DISPOSE OF REMOVED MATERIALS IN A LANDFILL APPROVED BY THE CITY OF WICHITA AND THE KANSAS DEPARTMENT OF HEALTH AND ENVIRONMENT.
6. ALL SANITARY SEWER CONSTRUCTION ACTIVITY SHALL BE COORDINATED WITH ONWER'S REPRESENTATIVE, RON WHITED, AT 641-5535. CONTRACTOR SHALL BE RESPONSIBLE FOR COORDINATING DISCONNECTION OF EXISTING BUILDINGS FROM SEPTIC SYSTEMS AND CONNECTION TO SANITARY SEWER SYSTEM. SOME BUILDINGS, SUCH AS THE DAYCARE, ARE IN CONTINUOUS USE AND WORK SHALL BE COORDINATED WITH RON WHITED.

GENERAL NOTES

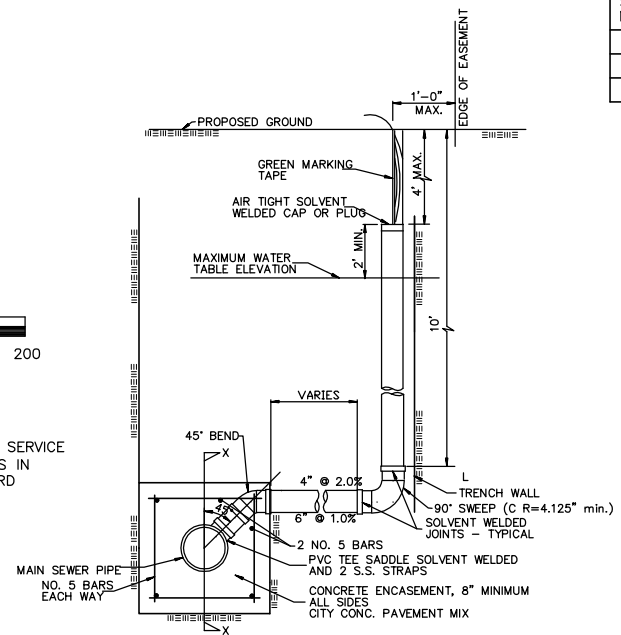
- RISERS.** Risers shall be installed to serve all lots or tracts where the sanitary sewer main is below the water table. Risers shall also be installed to serve all lots and tracts where the sanitary sewer main depth is greater than 12 feet below the proposed ground elevation. Installation of risers because of field conditions shall be as approved by the Construction Engineer. The location of the risers to serve developed property shall be approved by the property owner and the Construction Engineer.
- PIPE STUBS.** Pipe stubs shall be installed in manholes where locations of manholes will provide satisfactory service connection as determined by the Construction Engineer. The vertical distance between the flowline of the Manhole pipe stub and the flowline of the sanitary sewer main out of the manhole shall not exceed 2 feet. Risers shall be utilized at manhole pipe stubs as indicated in Note 1. Manhole pipe stubs shall be set such that the top of the stub is not lower than the top of the sanitary sewer main.
- SIZING.** Pipe stubs and risers shall be sized according to the plans and riser table where risers are indicated by the plans. Where risers or pipe stubs are required because of field conditions, the risers and stubs shall be six-inch diameter for commercial or industrial properties and 4" or 6" diameter for residential properties, based on lot size and sanitary sewer main depth. Sizing of risers and stubs shall be approved by the Construction Engineer prior to installation.
- RISER OR STUB MATERIAL.** Risers and stubs shall be constructed of Schedule 40 PVC Pipe, meeting the requirements of the latest revision of A.S.T.M. . All pipe joints shall be solvent welded.
- REINFORCED CONCRETE ENCASEMENT.** Riser connections to clay pipe sanitary sewers shall be reinforced concrete encased both ways from the riser centerline. The reinforced concrete encasement shall extend three feet from the riser centerline or stop at the first sanitary sewer pipe joint within three feet of the riser centerline. Riser connections to PVC Sanitary Sewer mains shall be reinforced concrete encased one foot each way from the riser centerline. The concrete encasement shall be reinforced using reinforcing steel as shown in the appropriate drawing. The concrete shall conform to the City Standard Specifications for concrete pavement.
- BEDDING.** Bedding around the sanitary sewer riser shall be compacted Pipe Bedding Type 1 or 2. The bedding shall be placed and compacted from the depth of the sanitary sewer main to the top of the sanitary sewer riser pipe. Compacted Pipe Bedding Type 1 or 2 shall be required for all risers whether constructed in vertical wall or sloped wall trenches. Bedding material and construction practices shall be approved by the Construction Engineer prior to installation.
- SUPPORT OF RISERS.** Sanitary sewer riser pipe shall be supported during trench backfill. The riser pipe shall be held in a vertical position at all times until trench backfill and compaction has been completed. Contractor's methods for supporting and backfilling the riser pipe shall be approved by the Construction Engineer.
- PLUGGING.** The ends of the riser pipes and manhole stubs shall be plugged using an airtight solvent welded cap or plug. Cap or plug fittings which do not provide an airtight seal will not be accepted.
- TOP OF THE RISER PIPE.** The top elevation of the sanitary sewer riser pipe shall be built per plan elevations, unless otherwise directed by the Construction Engineer. Where riser elevations are not shown on the plans, the top of the risers shall be set at an elevation four feet below the proposed ground surface. If ground water is encountered, the top of the riser pipe shall be set at an elevation two feet (min.) above the maximum water table elevation, regardless of the riser elevation shown on the plans.
- MARKING.** Locations of the ends of the sanitary sewer riser pipe shall be marked by fastening green colored plastic tape to the end of the riser. The tape shall be supported by a length of wooden 2" x 4", extending from the top of the riser pipe to the proposed ground surface. The green tape shall be visible and extend one foot above the proposed ground surface. The green tape shall be 4 mil Polyethylene film with a minimum width of three inches, specifically manufactured for the purpose of identification of underground sewers.
- LOCATION MEASURES.** The project inspector shall record and document the location of all risers constructed as measured from the nearest manhole, indicating the direction from the manhole, the direction and distance from the main, riser size, and elevation of the top of the riser.
- RISER LOCATION.** The riser shall be located per plan if shown. If not shown on the plan, the riser shall be located at the center of the lot, within one foot of the property side of the easement for the lot being served. All riser locations shall be approved by the Construction Engineer prior to installation.
- PAYMENT.** "Sanitary sewer risers" shall be paid for at the contract unit price per each, which price shall be full compensation for all pipe, fittings, marking tape, length of wooden 2 x 4, reinforced concrete encasement, support during backfill, backfill, labor, site restoration, and any other items necessary to complete the work. "Manhole stubs" shall be paid for at the contract unit price per each, which shall be full compensation for all labor, material, and incidentals necessary to complete the work including all pipe, fittings, reinforced concrete encasement, and all other items as required and listed for "Sanitary Sewer Risers".

SANITARY SERVICE CONNECTION SCHEDULE							
SERVICE NUMBER	BUILDING	SEWER LINE		APPROX. LENGTH		FL ELEV.(AS BUILT)	
		NO.	STATION	VERT.	HORZ.	UPSTREAM	DOWNSTREAM
1	DAYCARE	LINE 1	STA. 13+07.9	4.8	100.3		
2	MEETING HALL	LINE 1	STA. 14+16.0	0.7	105.9		

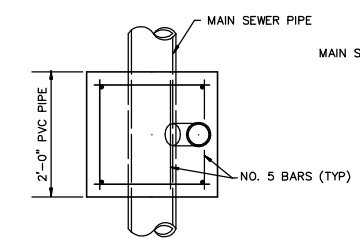


NOTE:
THE CONTRACTOR SHALL INSTALL CLEANOUTS ON SERVICE LINES AT 100'(MAX.) SPACING AND AT ALL BENDS IN ACCORDANCE WITH THE CITY OF WICHITA STANDARD SPECIFICATIONS.

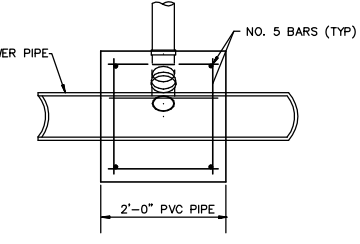
SE Cor., NE 1/4
Sec. 19, T26S, R1E



TYPICAL RISER DETAIL

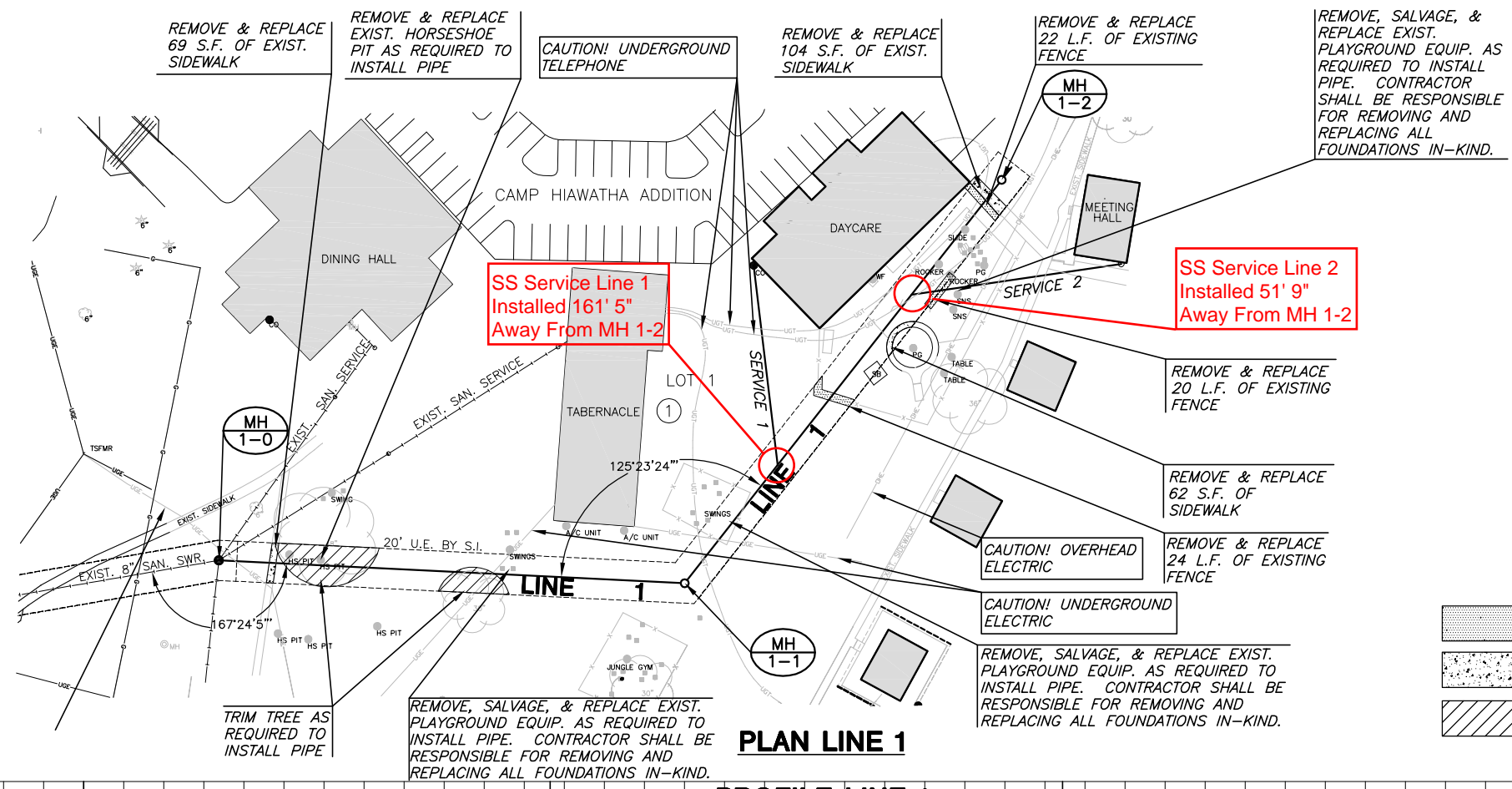


PLAN VIEW



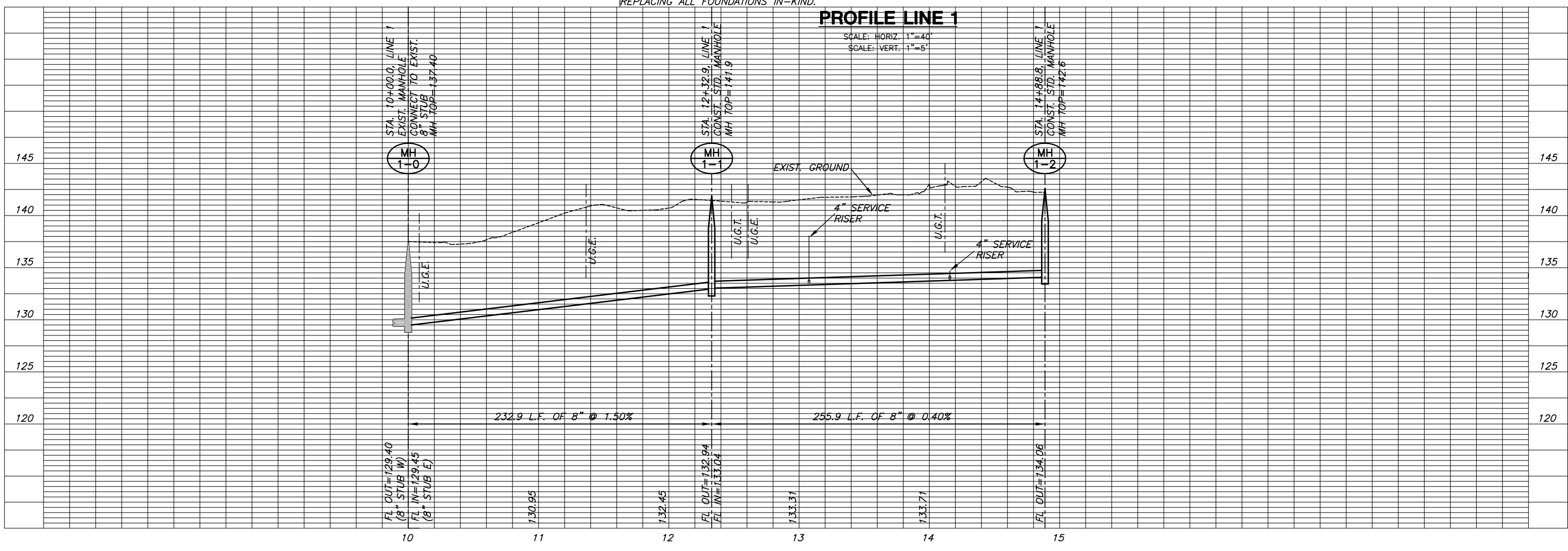
SECTION X-X

**PHASE 2 SANITARY SEWER PLANS FOR
SALVATION ARMY
HIAWATHA CAMPUS**



NOTE:
CONTRACTOR SHALL NOT MAKE ANY SANITARY SEWER SERVICE CONNECTIONS
UNTIL SEWER MAINS HAVE BEEN TESTED AND ACCEPTED BY THE ENGINEER AND
THE CITY OF WICHITA.

- = FENCE REMOVAL & REPLACEMENT
- = SIDEWALK REMOVAL & REPLACEMENT
- = TREE TRIMMING



PLOTFILE: Friday, March 26, 2008 @ 11:32AM

J:\CIVIL\06635.DWG SAN SEWER PHASE 2\06635B1.DWG

LINE 1
SHEET TITLE
06635
PROJECT NUMBER

SRS
DESIGN BY
TKL
DRAWN BY
MAB
CHECKED BY

ISSUED
February 2008
REVISED

See As Built
Details Above For
SS Service Lines.

SHEET NO.
5 of 9

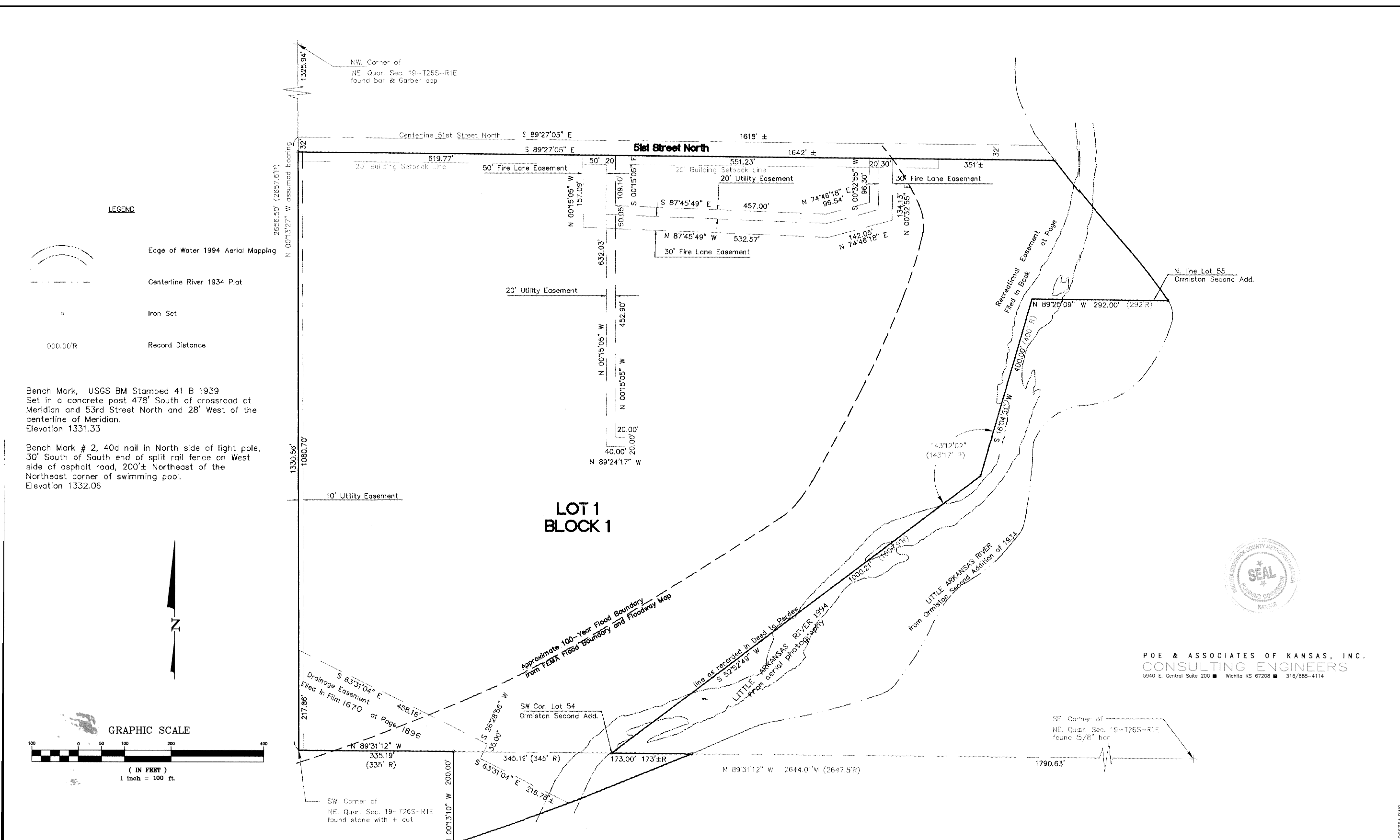
**SANITARY SEWER PLANS FOR
SALVATION ARMY
HIAWATHA CAMPUS**

**FINAL
PLAT**
SHEET TITLE
XXXX PPS
PROJECT NUMBER

DESIGN BY
DRAWN BY
CHECKED BY

ISSUED
February 2008
REVISED
As Built: 5-15-08

SHEET NO.
9 of 9

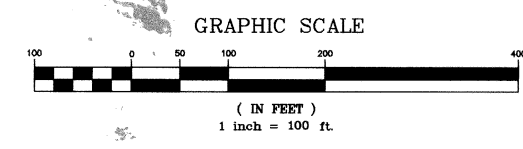


POE & ASSOCIATES OF KANSAS, INC.
CONSULTING ENGINEERS
5940 E. Central Suite 200 ■ Wichita KS 67208 ■ 316/685-4114

- LEGEND**
- Edge of Water 1994 Aerial Mapping
 - Centerline River 1934 Plat
 - Iron Set
 - Record Distance

Bench Mark, USGS BM Stamped 41 B 1939
Set in a concrete post 478' South of crossroad at
Meridian and 53rd Street North and 28' West of the
centerline of Meridian.
Elevation 1331.33

Bench Mark # 2, 40d nail in North side of light pole,
30' South of South end of split rail fence on West
side of asphalt road, 200'± Northeast of the
Northeast corner of swimming pool.
Elevation 1332.06



CAMP HIAWATHA ADDITION TO WICHITA, SEDGWICK COUNTY, KANSAS

PLOTED: Friday, March 28, 2008 @ 11:30AM

J:\CIVIL\06635\DWG\SAN\PHASE 2\06635A.DWG