

GENERAL NOTES

- ALL ELEVATIONS SHOWN ARE BASED ON MEAN SEA LEVEL DATUM.
- CONTRACTOR WILL BE REQUIRED TO PROVIDE A MINIMUM ADVANCE NOTICE OF FORTY-EIGHT(48)HOURS TO UTILITY COMPANIES PRIOR TO STARTING ANY EXCAVATION AS FOLLOWS:

KANSAS ONE CALL 687-2470

THE CONTRACTOR MUST NOTIFY THE FOLLOWING IN CASE OF AN EMERGENCY:

COX COMMUNICATIONS 262-4270 OR 263-2061
KANSAS GAS SERVICE 888-482-4950
WESTAR 261-6824
AQUILA 941-1608
SBC/AT&T 866-253-9548

THE CONTRACTOR SHALL NOTIFY PIPELINE COMPANIES AT LEAST 24 HOURS IN ADVANCE OF ANY WORK BEING PERFORMED ACROSS AND/OR ADJACENT TO PIPELINES.

3. THE CONTRACTOR SHALL RESTORE ALL DITCHES, SWALES, ROAD SHOULDERS, ENTRANCES AND BANK LINES TO THEIR ORIGINAL SLOPES AND GRADES EXCEPT AS SHOWN OTHERWISE. ALL AREAS DISTURBED BY CONSTRUCTION UNCLDING STAGING AREAS, SHALL BE REPLANTED WITH GRASS SEED AT THE APPROPRIATE RATES APPROVED BY THE ENGINEER.

4. THE CONTRACTOR SHALL MAINTAIN TRAFFIC USING BARRICADES AND FLAGPERSONS WHILE WORKING WITHIN STREET RIGHT-OF-WAY. INTERURBAN TRAFFIC GENERATED OUTSIDE THE PROJECT AREA SHALL NOT BE CARRIED THROUGH CONSTRUCTION. LOCAL RESIDENTIAL TRAFFIC GENERATED WITHIN THE PROJECT AREA SHALL BE CARRIED THROUGH CONSTRUCTION AS FURTHER PROMULGATED BY PROJECT SPECIAL PROVISIONS. THE CONTRACTOR SHALL ERECT WARNING SIGNS, FLASHING LIGHTS, AND BARRICADES IN COMPLIANCE WITH THE MANUAL ON UNIFORM TRAFFIC CONTROL DEVICES TO ENSURE SAFETY AS DIRECTED IN THE GENERAL CONDITIONS. THE CONTRACTOR SHALL LIMIT THE EXTENT OF TRENCH TO REMAIN OPEN OVERNIGHT AND WEEKENDS TO LESS THAN 50 FEET.

5. UNDERGROUND UTILITY SERVICE LINES AND OVERHEAD UTILITY POLE LINES ARE TO BE ADJUSTED AS NECESSARY BY OTHERS PRIOR TO CONSTRUCTION UNLESS THE PLANS SPECIFICALLY CALL FOR THEIR ADJUSTMENT BY THE CONTRACTOR OR UNLESS THE PLANS SPECIFICALLY IDENTIFY A UTILITY TO BE ADJUSTED BY ITS OWNER DURING CONSTRUCTION. EXISTING UTILITIES AND THEIR LOCATION, AS SHOWN ON THE PLANS, REPRESENT THE BEST INFORMATION OBTAINABLE FOR DESIGN. IT SHOULD BE NOTED THAT OTHER BURIED LINES AND CABLE MAY EXIST WHICH ARE NOT SHOWN ON THESE PLANS. THE CONTRACTOR SHALL EXERCISE EXTREME CAUTION DURING TRENCHING OPERATIONS TO AVOID DAMAGING THESE LINES AND CABLES. ANY UTILITIES DAMAGED SHALL BE REPLACED OR REPAIRED IMMEDIATELY AS DIRECTED BY THE ENGINEER AT THE CONTRACTOR'S EXPENSE. THE CONTRACTOR SHALL PROTECT FROM DAMAGE AND SUPPORT EXISTING UTILITIES THROUGH CONSTRUCTION AS APPROVED BY THE UTILITY OWNER AND THE ENGINEER AT THE CONTRACTOR'S EXPENSE. LOCATION INFORMATION HAS BEEN OBTAINED FROM THE VARIOUS UTILITY COMPANIES AND IS EITHER FROM COMPANY RECORD DRAWINGS OR COMPANY PROVIDED FIELD LOCATIONS. THE CONTRACTOR WILL BE REQUIRED TO WORK AROUND EXISTING UTILITIES WITHIN THE RIGHT-OF-WAY WHICH DO NOT CONFLICT WITH PROPOSED CONSTRUCTION.

6. RUBBLE FROM THE REMOVAL OF MISCELLANEOUS STRUCTURES AND EXCESS EXCAVATION WHICH IS TO BE WASTED SHALL BE DISPOSED OF ON SITES TO BE PROVIDED BY THE CONTRACTOR. THESE SITES SHALL BE APPROVED BY THE ENGINEER AS TO SUITABILITY, APPEARANCE AND SITE LOCATION. LOCATIONS, THAT IN THE OPINION OF THE ENGINEER, WILL LEAVE AN UNSIGHTLY APPEARANCE WILL NOT BE APPROVED. ALL DISPOSAL SITES MUST BE APPROVED BY THE KANSAS DEPARTMENT OF HEALTH AND ENVIRONMENT. MATERIAL EITHER STOCKPILED OR DISPOSED OF IN A FLOODPLAIN WOULD REQUIRE A KANSAS STATE BOARD OF AGRICULTURE PERMIT. ANY MATERIAL DUMPED IN WATERS OF THE UNITED STATES OR WETLANDS IS SUBJECT TO U.S. CORPS OF ENGINEERS PERMITTING REGULATIONS. ANY MATERIAL BURIED OR STOCKPILED BEYOND APPROVED CONSTRUCTION LIMITS WOULD REQUIRE ADDITIONAL ARCHAEOLOGICAL INVESTIGATIONS UNLESS BURIED IN A PREVIOUSLY APPROVED BORROW LOCATION.

7. PROPERTIES WITHIN THE PROJECT LIMITS MAY HAVE UNDERGROUND SPRINKLER SYSTEMS IN THE PUBLIC RIGHT-OF-WAY WHICH CONFLICT WITH NEW CONSTRUCTION. CONTRACTOR WILL BE REQUIRED TO REMOVE SUCH IMPROVEMENTS SHOULD THEY NOT BE REMOVED BY THEIR OWNER AT THE TIME OF CONSTRUCTION OF THE PROJECT. THE CONTRACTOR WILL BE REQUIRED TO SALVAGE ALL SPRINKLER HEADS AND/OR VALVES AND GIVE SUCH MATERIAL TO THEIR OWNER. PORTIONS OF UNDERGROUND SPRINKLER SYSTEMS NOT IN CONFLICT WITH NEW CONSTRUCTION SHALL BE PROTECTED FROM DAMAGE AND SHALL REMAIN IN PLACE. ALL WORK IN CONNECTION WITH UNDERGROUND SPRINKLER SYSTEMS SHALL BE CONSIDERED AS SUBSIDIARY TO THE CONTRACT PAY ITEMS OF WORK.

8. THE CONTRACTOR MUST EXAMINE THE CONSTRUCTION SITE PRIOR TO BIDDING AND BE SATISFIED AS TO THE WORK SHOWN FOR COMPLETION. AFTER BIDS HAVE BEEN RECEIVED, THE CONTRACTOR SHALL NOT ASSERT THAT THERE WAS A MISUNDERSTANDING OF THE QUANTITIES OF WORK OR OF THE NATURE FOR THE WORK TO BE COMPLETED.

9. THE CONTRACTOR SHALL NOTIFY THE INSPECTOR FOR THIS PROJECT 48 HOURS PRIOR TO BEGINNING CONSTRUCTION. THE CONTRACTOR SHALL NOT START WORK ON THE PROJECT UNTIL THE PROJECT INSPECTOR ASSIGNED TO THE PROJECT IS PRESENT ON SITE. ANY WORK DONE WITHOUT INSPECTION WILL BE REQUIRED TO BE UNCOVERED FOR INSPECTION.

10. THE CONTRACTOR SHALL GIVE ALL PROPERTY OWNERS AND/OR TENANTS OF DEVELOPED PROPERTY DIRECTLY ADJUTING THE CONSTRUCTION OF THIS PROJECT A MINIMUM OF TEN (10) DAYS ADVANCE NOTICE PRIOR TO START OF CONSTRUCTION.

11. THE CONTRACTOR SHALL BE RESPONSIBLE FOR PRESERVING PROPERTY IRONS. THE CONTRACTOR WILL BE REQUIRED TO REESTABLISH ANY PROPERTY IRONS WHICH ARE DAMAGED OR DESTROYED BY HIS CONSTRUCTION OPERATIONS SUCH IRONS SHALL BE REESTABLISHED BY A LICENSED LAND SURVEYOR IN ACCORDANCE WITH STATE LAWS.

12. SEEDING AND FERTILIZING OF ALL AREAS DISTURBED BY THE CONSTRUCTION OF THE SANITARY SEWER AS SHOWN ON THE PLANS SHALL BE "SUBSIDIARY" TO OTHER ITEMS IN THE CONTRACT..

SANITARY SEWER IMPROVEMENTS

TO SERVE

KANSAS FENCE

LOT 1, BLOCK B, MID-CONTINENT INDUSTRIAL PARK II

COW PRIVATE PROJ. NO.: 1829 (O.C.A. NO. 607861)

WICHITA, SEDGWICK COUNTY, KANSAS

NOVEMBER 2007

INDEX OF SHEETS

- Title Sheet
- Site Plan
- Sanitary Sewer Plan & Profile
- Precast Type 'P' Manhole Details
- Backfill Details

GENERAL SEWER NOTES

- COST OF EXCAVATION, HAULING AND DUMPING OF EXCESS EXCAVATION SHALL BE SUBSIDIARY TO OTHER ITEMS OF WORK.
- ALL PROPOSED STUBS AND PLUGGED PIPES SHALL BE LOCATED WITH GREEN PLASTIC TAPE.
- PRIOR TO LAYING THE NEW SEWER LINES THE CONTRACTOR SHALL EXPOSE AND VERIFY THE ELEVATION, GRADE AND ALIGNMENT OF THE EXISTING SANITARY SEWER AND NOTIFY THE ENGINEER OF ANY DISCREPANCIES FROM THE PLAN.
- ALL PIPE JOINTS SHALL BE LAID AND PUSHED 'FULL HOME', WITH THE REVELED END OF THE SPIGOT MAKING FULL CONTACT WITH THE CHAMFERED AREA AT THE THROAT OF THE BELL OR SOCKET, WITH NO SEPARATION BETWEEN THEM. IF SEPARATION IS DETERMINED, THE PIPE SHALL BE EXCAVATED AND RE-LAID ACCORDING TO SPECIFICATIONS AT THE CONTRACTOR'S EXPENSE.
- THE CONTRACTOR SHALL PROVIDE POSITIVE DRAINAGE AWAY FROM ALL MANHOLE COVERS.
- AT LEAST 24 HOURS BEFORE CONNECTING NEW SEWER PIPE TO THE EXISTING SEWAGE SYSTEM, THE CONTRACTOR SHALL CONTACT THE CITY OF WICHITA, (268-4555). THE CONTRACTOR SHALL KEEP ANY CONSTRUCTION DEBRIS FROM ENTERING THE EXISTING SANITARY SEWER DURING CONSTRUCTION. TO PREVENT WATER OR DEBRIS FROM ENTERING THE EXISTING SEWER, A MECHANICAL PLUG SHALL BE INSTALLED AND MAINTAINED TO ISOLATE THE EXISTING SEWER FROM THE NEW CONSTRUCTION UNTIL THE NEW CONSTRUCTION IS CLEANED, TELEVIEWED AND HAS BEEN ACCEPTED. THE WATER USED FOR CLEANING SHALL NOT BE ADDED TO THE FLOW OF THE EXISTING SEWER. THE CLEANING OR OTHERWISE ACCUMULATED WATER SHALL BE PUMPED OR OTHERWISE REMOVED PRIOR TO TELEVIEWING.

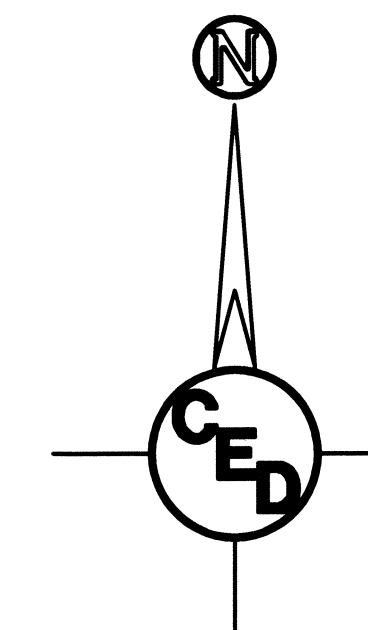


PROJECT LOCATION

*Benchmark: R.R. Spike in Power Pole
@ N.W. Corner Lot 1, Block B, Mid-Continent Industrial Park II,
Sedgwick County, Kansas
Elevation = 1329.10 (NAVD 88)*

PROJECT LOCATED IN
SW 1/4 SEC. 8, TWP. 28-S,
R-1-W OF THE 6TH P.M.,
SEDGWICK COUNTY, KANSAS

As-Builts:
Contractor: **McCullough Excavating**
Inspector: **Pat Hayes, CED**
.pdf by: **JDT, CED, 7-17-08**



APPROVED AS NOTED
By CITY ENGINEER OF WICHITA

Sanitary Sewers VRH 12/17/07

Storm Sewers _____

Driveway Approaches _____

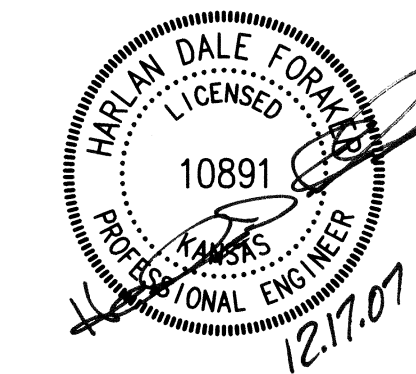
Water Mains _____

Paving _____

NOTE TO CONTRACTOR

INSPECTION AND TESTING FOR THIS PROJECT IS TO BE PROVIDED BY A LICENSED CONSULTING ENGINEERING FIRM UNDER CONTRACT WITH THE OWNER/DEVELOPER. SAID INSPECTION TO BE IN ACCORDANCE WITH THE CITY OF WICHITA STANDARD CONSTRUCTION ENGINEERING PRACTICES AND CERTIFIED BY A LICENSED PROFESSIONAL ENGINEER. NO WORK SHALL BE PERFORMED IN DEDICATED EASEMENTS OR THE PUBLIC RIGHT-OF-WAY BY THE CONTRACTOR WITHOUT SUCH INSPECTION NOR SHALL ANY WORK BE COMMENCED IN DEDICATED EASEMENTS OR PUBLIC RIGHT-OF-WAY WITHOUT WRITTEN AUTHORIZATION BY THE CITY ENGINEER.

Released 7/25/08
JDL 8/6/08



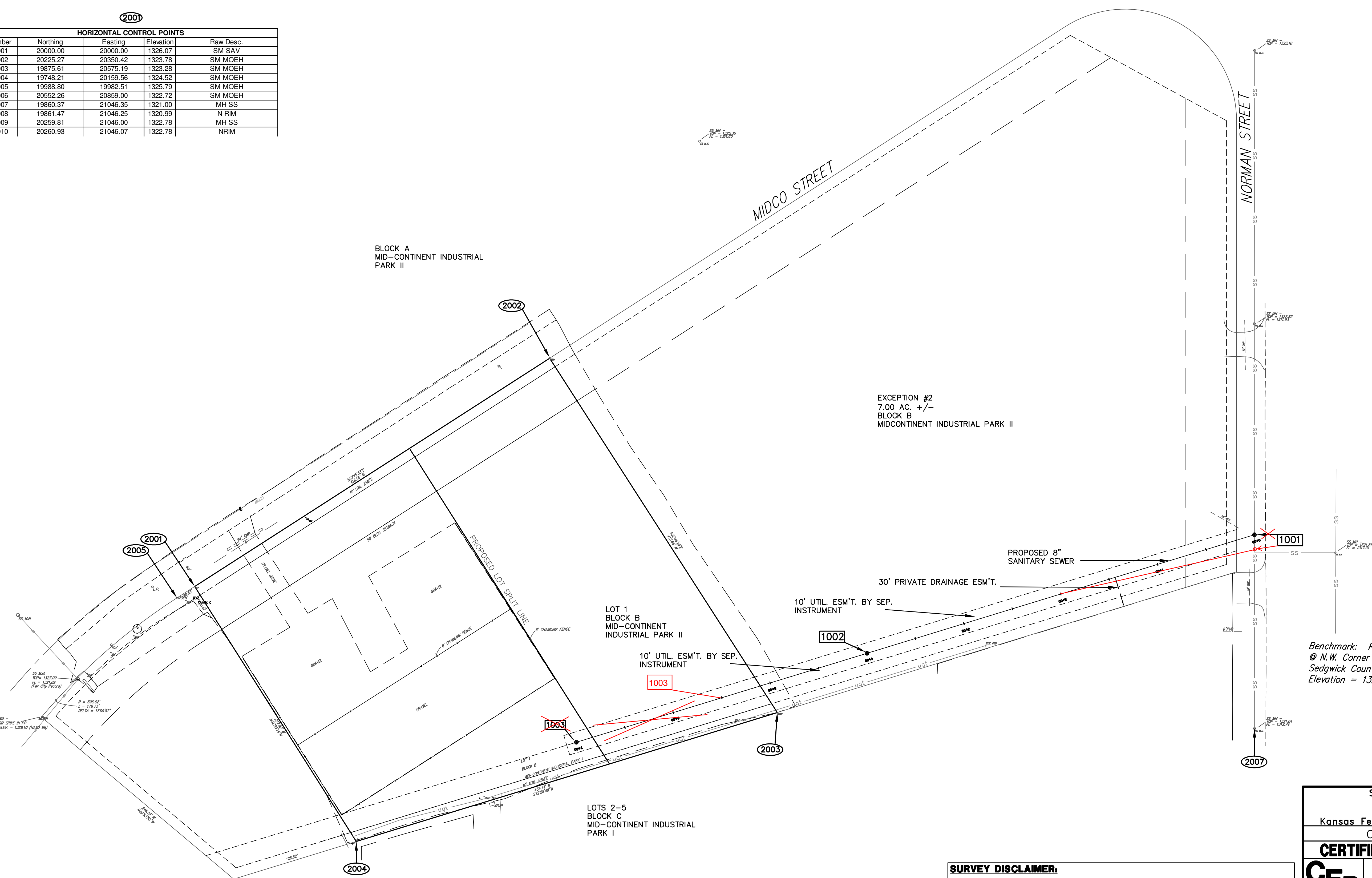
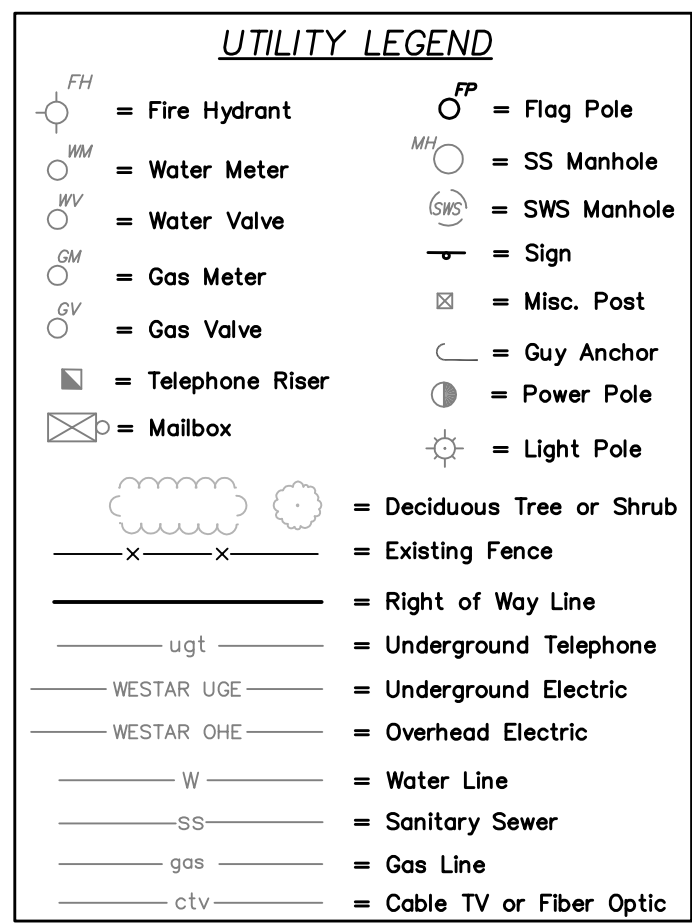
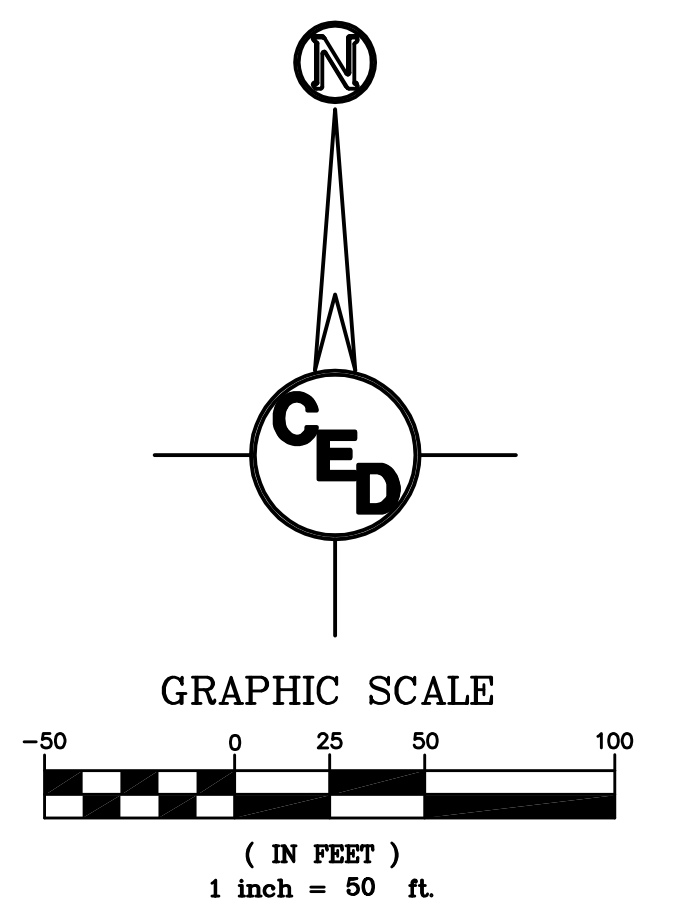
CED PROJ. NO. 20071580	
CERTIFIED ENGINEERING DESIGN, P.A.	
810 WEST DOUGLAS, SUITE C WICHITA, KANSAS 67203 PH: (316) 262-8808 FAX: (316) 262-1669	SHEET 1 TOTAL 6

1001

Sanitary Sewer Staking Points			
Number	Northing	Easting	Raw Desc
1001	-20057+12	-21046+22	SS Line Begin PI. 0+00
1002	19934.10	20663.72	SS MH @ 4+00
1003	-19846+39	-20976+84	End SS Line@MH@7+00

2001

HORIZONTAL CONTROL POINTS				
Number	Northing	Easting	Elevation	Raw Desc.
2001	20000.00	20000.00	1326.07	SM SAV
2002	20225.27	20350.42	1323.78	SM MOEH
2003	19875.61	20575.19	1323.28	SM MOEH
2004	19748.21	20159.56	1324.52	SM MOEH
2005	19988.80	19982.51	1325.79	SM MOEH
2006	20552.26	20859.00	1322.72	SM MOEH
2007	19860.37	21046.35	1321.00	MH SS
2008	19861.47	21046.25	1320.99	N RIM
2009	20259.81	21046.00	1322.78	MH SS
2010	20260.93	21046.07	1322.78	NRIM



EXCEPTION #2
7.00 AC. +/-
BLOCK B
MIDCONTINENT INDUSTRIAL PARK II

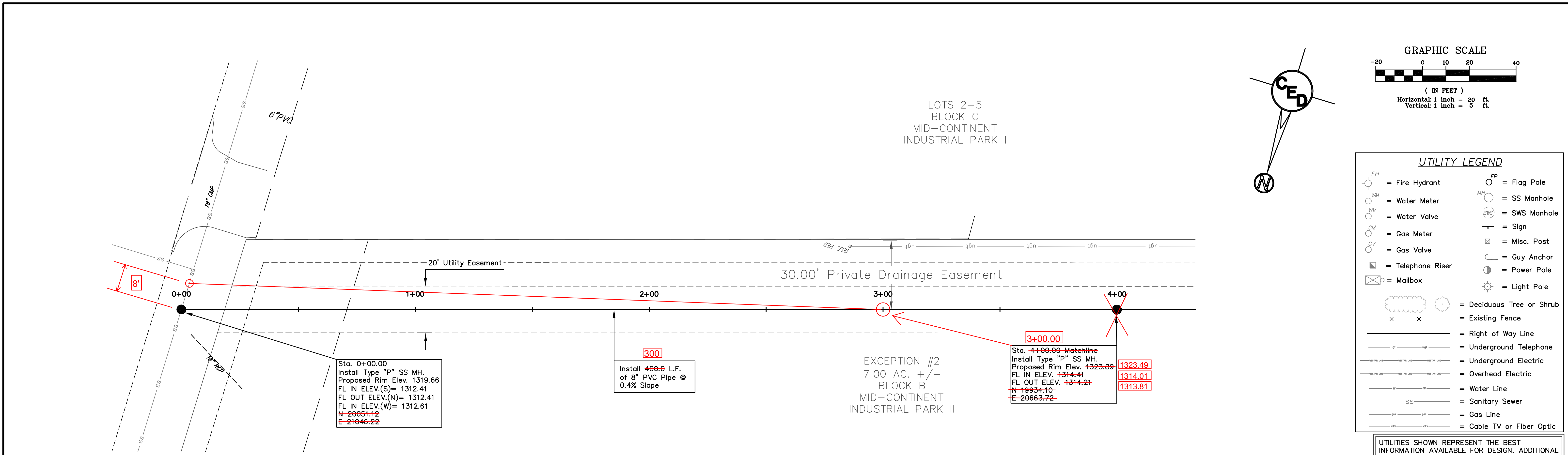
Benchmark: R.R. Spike in Power Pole
@ N.W. Corner Lot 1, Block B, Mid-Continent Industrial Park II,
Sedgwick County, Kansas
Elevation = 1329.10 (NAVD 88)

UTILITIES SHOWN REPRESENT THE BEST INFORMATION AVAILABLE FOR DESIGN. ADDITIONAL UTILITIES MAY BE PRESENT ON THIS PROJECT. THE CONTRACTOR SHALL BE RESPONSIBLE FOR DETERMINING THE EXACT LOCATION, DEPTH AND SIZE OF ALL UNDERGROUND UTILITIES PRIOR TO CONSTRUCTION. THE CONTRACTOR SHALL BE LIABLE FOR ANY DAMAGE CAUSED BY THE FAILURE TO DO SO.

SURVEY DISCLAIMER:
TOPOGRAPHIC SURVEY USED IN PREPARING PLANS WAS PROVIDED BY SAVOY COMPANY PA, (316)-265-0005, 535 S. EMPORIA ST., WICHITA, KANSAS. ENGINEER DOES NOT GUARANTEE SURVEY ELEVATIONS FOR ACCURACY. CONTRACTOR SHALL VERIFY ELEVATIONS AND NOTIFY ENGINEER OF ANY DISCREPANCIES.

SANITARY SEWER SERVICE FOR
SITE PLAN
Kansas Fence, Wichita, Sedgwick County, Kansas
CED PROJ. NO.: 20071580
CERTIFIED ENGINEERING DESIGN, P.A.
810 WEST DOUGLAS, SUITE C
WICHITA, KANSAS 67203
PH.(316)262-8808 FAX.(316)262-1669

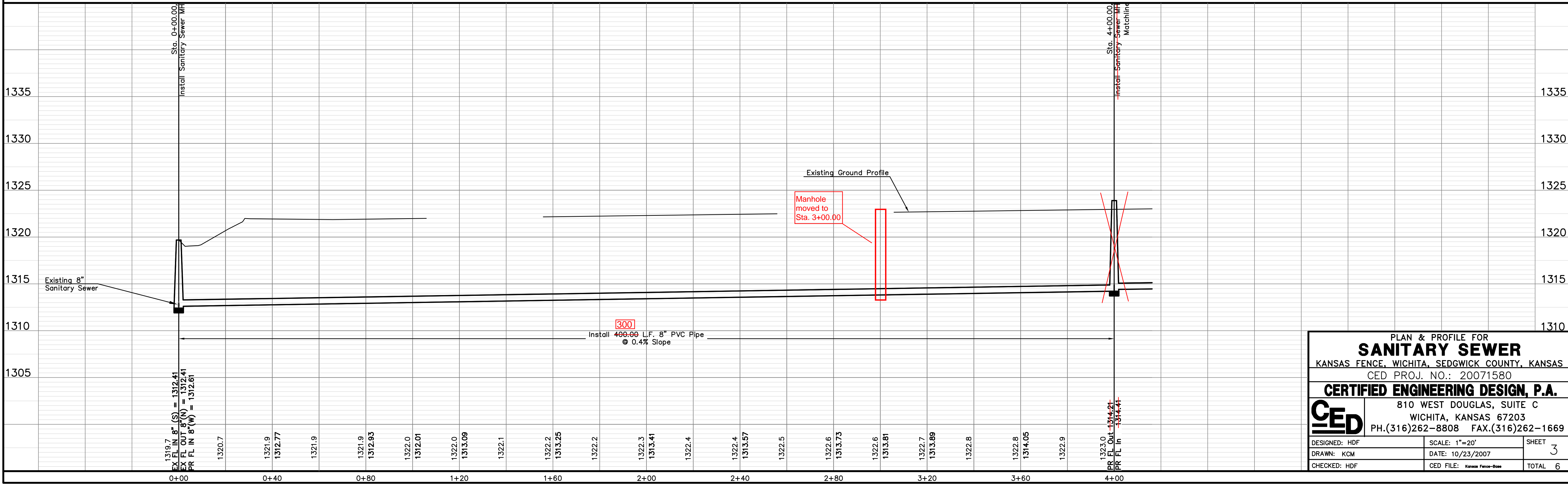
DESIGNED: HDF	SCALE: 1"=50'	SHEET
DRAWN: KCM	DATE: 10/23/2007	2
CHECKED: HDF	CED FILE: Kansas Fence-Base	TOTAL 6



SANITARY SEWER LINE

Benchmark: R.R. Spike in Power Pole
@ N.W. Corner Lot 1, Block B, Mid-Continent Industrial Park II,
Sedgwick County, Kansas
Elevation = 1329.10 (NAVD 88)

UTILITIES SHOWN REPRESENT THE BEST INFORMATION AVAILABLE FOR DESIGN. ADDITIONAL UTILITIES MAY BE PRESENT ON THIS PROJECT. THE CONTRACTOR SHALL BE RESPONSIBLE FOR DETERMINING THE EXACT LOCATION, DEPTH AND SIZE OF ALL UNDERGROUND UTILITIES PRIOR TO CONSTRUCTION. THE CONTRACTOR SHALL BE LIABLE FOR ANY DAMAGE CAUSED BY THE FAILURE TO DO SO.



PLAN & PROFILE FOR
SANITARY SEWER
KANSAS FENCE, WICHITA, SEDGWICK COUNTY, KANSAS
CED PROJ. NO.: 20071580

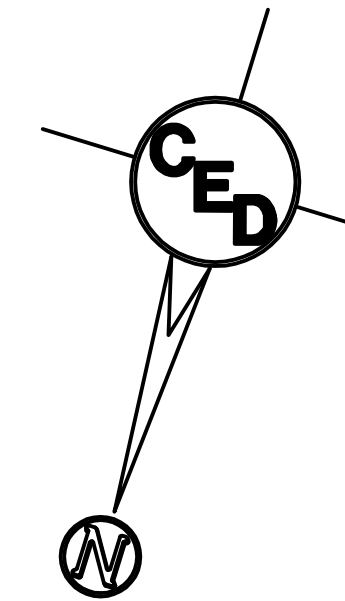
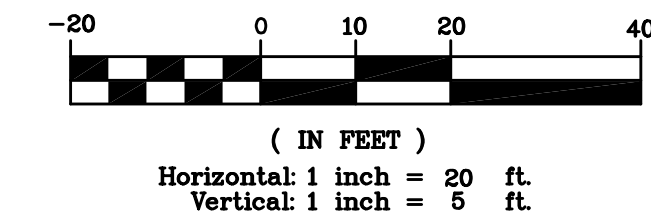
CERTIFIED ENGINEERING DESIGN, P.A.
810 WEST DOUGLAS, SUITE C
WICHITA, KANSAS 67203
PH.(316)262-8808 FAX.(316)262-1669

DESIGNED: HDF	SCALE: 1"=20'	SHEET
DRAWN: KCM	DATE: 10/23/2007	3
CHECKED: HDF	CED FILE: Kansas Fence-Box	TOTAL 6

LOTS 2-5
BLOCK C
MID-CONTINENT
INDUSTRIAL PARK I

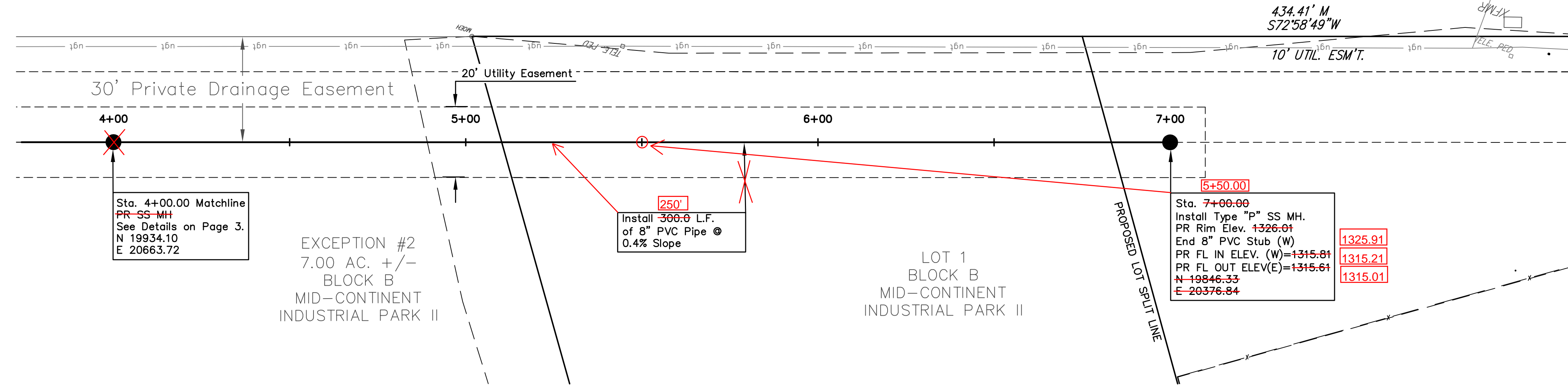
LOT 1
BLOCK B
MID-CONTINENT
INDUSTRIAL PARK II

GRAPHIC SCALE



UTILITY LEGEND

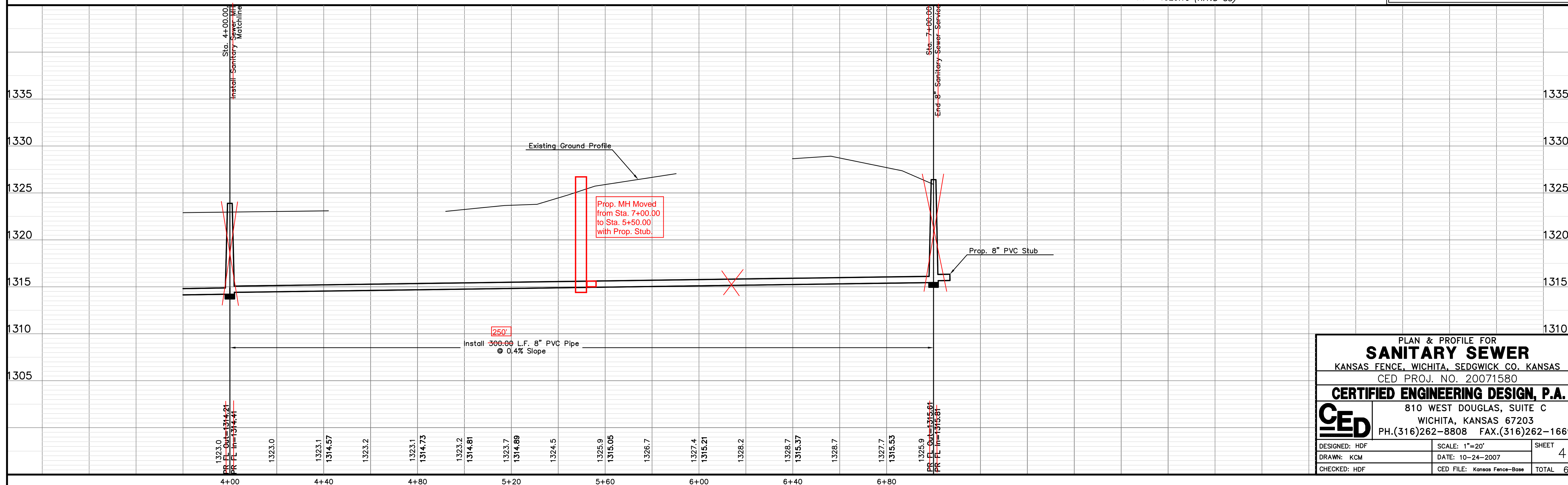
- = Fire Hydrant
- = Water Meter
- = Water Valve
- = Gas Meter
- = Gas Valve
- = Telephone Riser
- = Mailbox
- = Flag Pole
- = SS Manhole
- = SWS Manhole
- = Sign
- = Misc. Post
- = Guy Anchor
- = Power Pole
- = Light Pole
- = Deciduous Tree or Shrub
- = Existing Fence
- = Right of Way Line
- = Underground Telephone
- = Underground Electric
- = Overhead Electric
- = Water Line
- = Sanitary Sewer
- = Gas Line
- = Cable TV or Fiber Optic



SANITARY SEWER LINE

Benchmark: R.R. Spike in Power Pole
@ N.W. Corner Lot 1, Block B, Mid-Continent Industrial Park II,
Sedgwick County, Kansas
Elevation = 1329.10 (NAVD 88)

UTILITIES SHOWN REPRESENT THE BEST INFORMATION AVAILABLE FOR DESIGN. ADDITIONAL UTILITIES MAY BE PRESENT ON THIS PROJECT. THE CONTRACTOR SHALL BE RESPONSIBLE FOR DETERMINING THE EXACT LOCATION, DEPTH AND SIZE OF ALL UNDERGROUND UTILITIES PRIOR TO CONSTRUCTION. THE CONTRACTOR SHALL BE LIABLE FOR ANY DAMAGE CAUSED BY THE FAILURE TO DO SO.



PLAN & PROFILE FOR
SANITARY SEWER
KANSAS FENCE, WICHITA, SEDGWICK CO. KANSAS
CED PROJ. NO. 20071580
CERTIFIED ENGINEERING DESIGN, P.A.
810 WEST DOUGLAS, SUITE C
WICHITA, KANSAS 67203
PH.(316)262-8808 FAX.(316)262-1669

DESIGNED: HDF	SCALE: 1"=20'	SHEET 4
DRAWN: KCM	DATE: 10-24-2007	TOTAL 6
CHECKED: HDF	CED FILE: Kansas Fence-Base	