

PRIVATE SANITARY SEWER EXTENSION

TO SERVE SEDGWICK COUNTY ARENA

PRIVATE PROJECT NO. 1793 PPS (607861)

CITY OF WICHITA, KANSAS

JAMES L. ARMOUR, P.E. - CITY ENGINEER

AS-BUILT PLANS

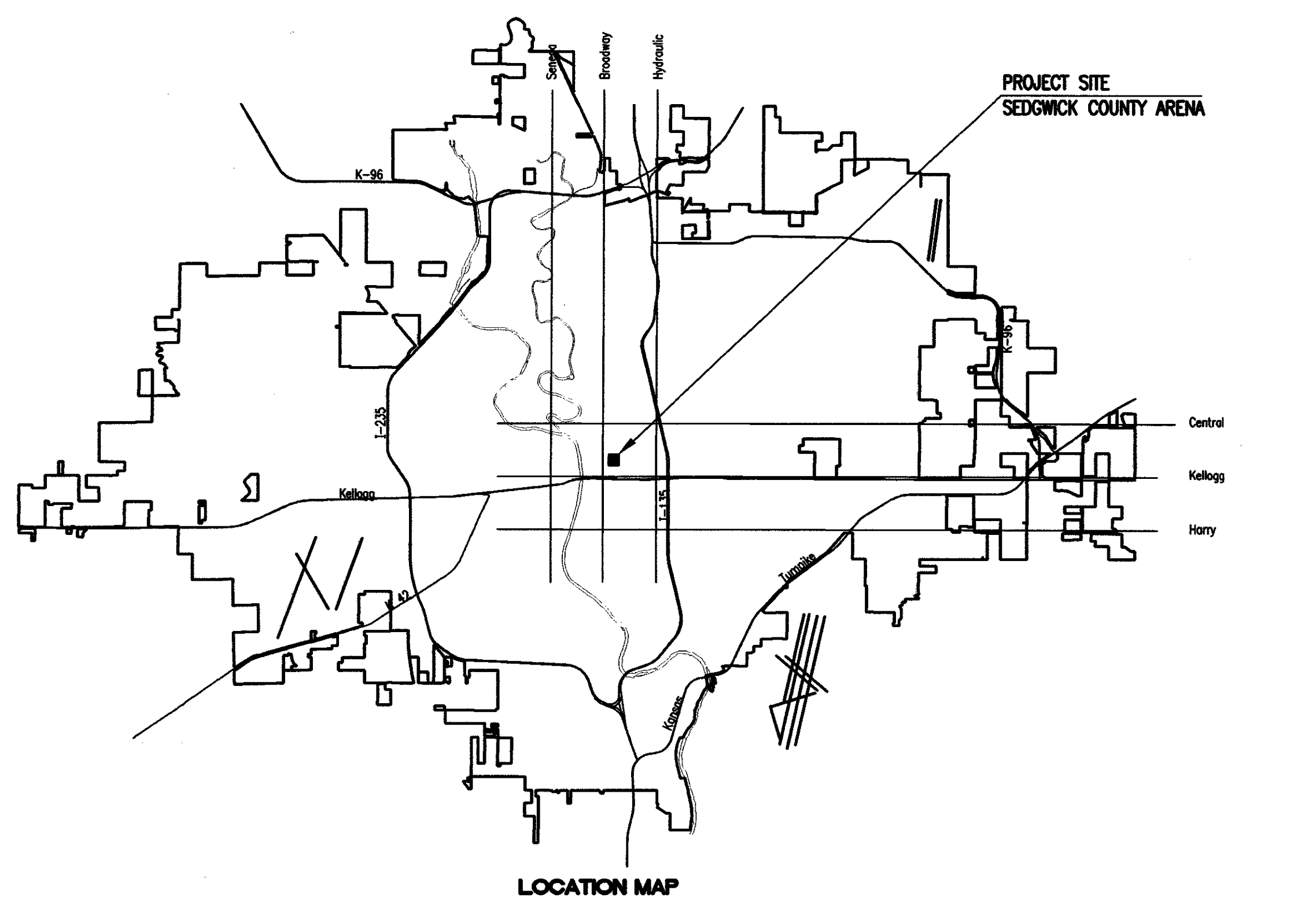
CONTRACTOR: DONDLINGER & SONS CONST. CO., INC.

INSPECTOR: BRIAN BLOYD, SCHWAB-EATON, P.A.

.PDF BY: BDB 7-9-08

PROJECT WAS CONSTRUCTED TO PLAN SPECIFICATIONS.

Released 8/4/08
JDL 8/8/08



JULY 2007

PLANS PREPARED BY
PROFESSIONAL ENGINEERING CONSULTANTS, P.A.
ENGINEERS
WICHITA, KANSAS

INDEX OF SHEETS

SHEET NO. CU4.1	SANITARY SEWER TITLE SHEET
SHEET NO. CU4.2	SANITARY SEWER KEY MAP AND GENERAL NOTES
SHEET NO. CU4.3-4.9	SANITARY SEWER PLAN/PROFILE
SHEET NO. CU4.10	TYPE "F" MANHOLE DETAILS
SHEET NO. CU4.11	FRAME & COVER DETAILS
SHEET NO. CU4.12	MANHOLE ADJUSTMENT DETAILS
SHEET NO. CU4.13	VERTICAL RISER DETAIL
SHEET NO. CU4.14	ALLEY PAVING PLAN
SHEET NO. CU4.15	PAVING DETAILS
SHEET NO. CU4.16	WILLIAM/ST. FRANCIS INTERSECTION PLAN
SHEET NO. CU4.17	WILLIAM/COMMERCE ST. PLAN
SHEET NO. CU4.18	SHALLOW MANHOLE DETAILS
SHEET NO. CS1.7	PLAT
SHEET NO. CC4.2-4.6	SOIL EROSION BMP DETAILS

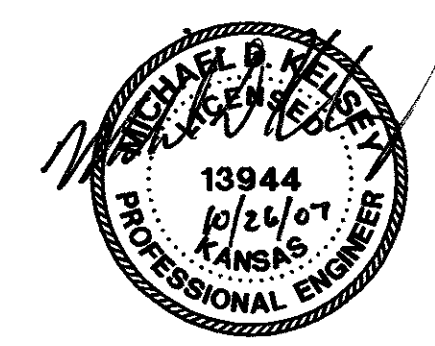
APPROVED AS NOTED
By CITY ENGINEER OF WICHITA

Sanitary Sewers URH 10/26/07
Storm Sewers _____
Driveway Approaches _____
Paving _____

NOTE TO CONTRACTOR

INSPECTION AND TESTING FOR THIS PROJECT IS TO BE PROVIDED BY A LICENSED CONSULTING ENGINEERING FIRM CONTRACTED BY THE OWNER/DEVELOPER. SAID INSPECTION TO BE IN ACCORDANCE WITH THE CITY OF WICHITA STANDARD CONSTRUCTION ENGINEERING PRACTICES AND CERTIFIED BY A LICENSED PROFESSIONAL ENGINEER. NO WORK SHALL BE PERFORMED IN DEDICATED EASEMENTS OR PUBLIC RIGHT-OF-WAY BY THE CONTRACTOR UNTIL SUCH INSPECTION IS ARRANGED FOR AND REQUIRED BONDS HAVE BEEN SUBMITTED TO AND APPROVED BY THE CITY NOR SHALL ANY WORK BE COMMENCED IN DEDICATED EASEMENTS OR PUBLIC RIGHT-OF-WAY WITHOUT WRITTEN AUTHORIZATION BY THE CITY ENGINEER. IMPROVEMENTS PERFORMED UNDER THIS PROJECT SHALL NOT BE ACCEPTED BY THE CITY UNTIL ALL APPLICABLE DOCUMENTATION HAS BEEN SUBMITTED TO THE CITY ENGINEER. THIS MAY INCLUDE: RECORD DRAWINGS, INSPECTION LOGS, TEST DOCUMENTATION, TV TAPES, AND A CERTIFICATE OF COMPLETION. THE ABOVE SHALL BE PERFORMED BY THE CONSULTING FIRM CONTRACTED TO INSPECT THIS PROJECT.

Send 10-17-2007 4:05:18 PM by CSL
D:\2005\0548\000\CONSTRUCTION PLANS\68-CU4.1-Sanitary Sewer Title



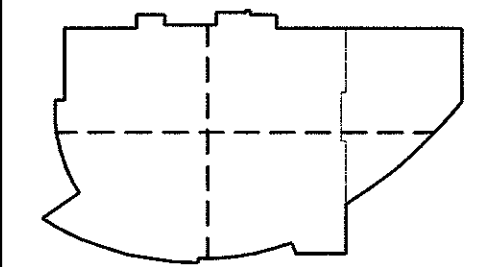
arenadesign
CONSULTANTS, P.A.
MECHANICAL
ELECTRICAL
PLUMBING
ENGINEERING
ARCHITECTURE
LANDSCAPE ARCHITECTURE
AUDIO VISUAL CONSULTANT
FOOD SERVICE CONSULTANT
WILSON DARNELL MANN ARCHITECTS
105 N. Washington
ARCHITECT OF RECORD
DESIGN ARCHITECT
WALTER P. MOORE
STRUCTURAL ENGINEER
PROFESSIONAL ENGINEERING
ASSOCIATE ARCHITECT
CONSULTANTS
GOSSEL LIVINGSTON ASSOCIATES, INC.
MECHANICAL/PLUMBING ENGINEER
MICHELETTI ARCHITECT
PROFESSIONAL ENGINEER
WALTER P. JOHNSON, HADDON &
WALTER P. JOHNSON, HADDON &
WALTER P. JOHNSON, HADDON &
WALTER P. JOHNSON, HADDON &

SEDGWICK COUNTY
ARENA

500 E. WATERMAN, WICHITA, KS 67202

FOR CONSTRUCTION
OCTOBER 26, 2007

PACKAGE REVISIONS	
NO.	DATE DESCRIPTION

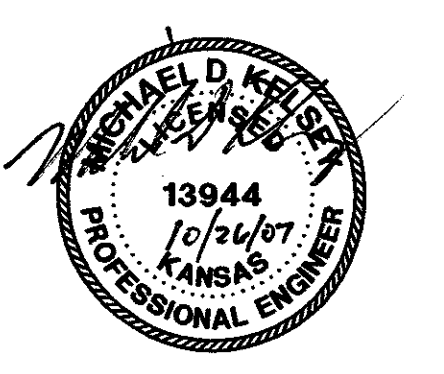


PROJECT NO: 05220	ISSUED BY: PEC
DRAWN BY: CSL	REVIEWED BY: RHY
ISSUE DATE:	10-26-2007

SHEET TITLE: **SANITARY SEWER TITLE SHEET**

Professional Engineering Consultants, P.A.
303 S. TOPICKA • WICHITA, KANSAS 67202 • 316-262-2691 • FAX 316-262-3003
www.pec1.com

CU4.1

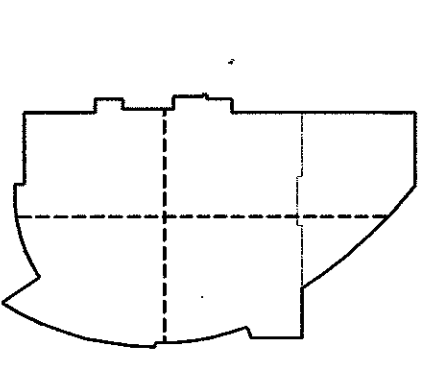


arenadesign
 CONSULTANTS
 ARCHITECTS
 ENGINEERS
 PLANNERS
 DESIGNERS
 LANDSCAPE ARCHITECTS
 SURVEYORS
 ENVIRONMENTAL ENGINEERS
 INTERIOR DESIGNERS
 PLANNING ENGINEERS
 PROFESSIONAL ENGINEERS
 ARCHITECTS
 ASSOCIATE ARCHITECTS
 ASSOCIATE ENGINEERS
 ASSOCIATE PLANNERS
 ASSOCIATE DESIGNERS
 ASSOCIATE LANDSCAPE ARCHITECTS
 ASSOCIATE SURVEYORS
 ASSOCIATE ENVIRONMENTAL ENGINEERS
 ASSOCIATE INTERIOR DESIGNERS
 ASSOCIATE PLANNING ENGINEERS
 ASSOCIATE PROFESSIONAL ENGINEERS
 ASSOCIATE ARCHITECTS

**SEDGWICK COUNTY
 ARENA**
 500 E. WATERMAN, WICHITA, KS 67202

**FOR CONSTRUCTION
 OCTOBER 26, 2007**

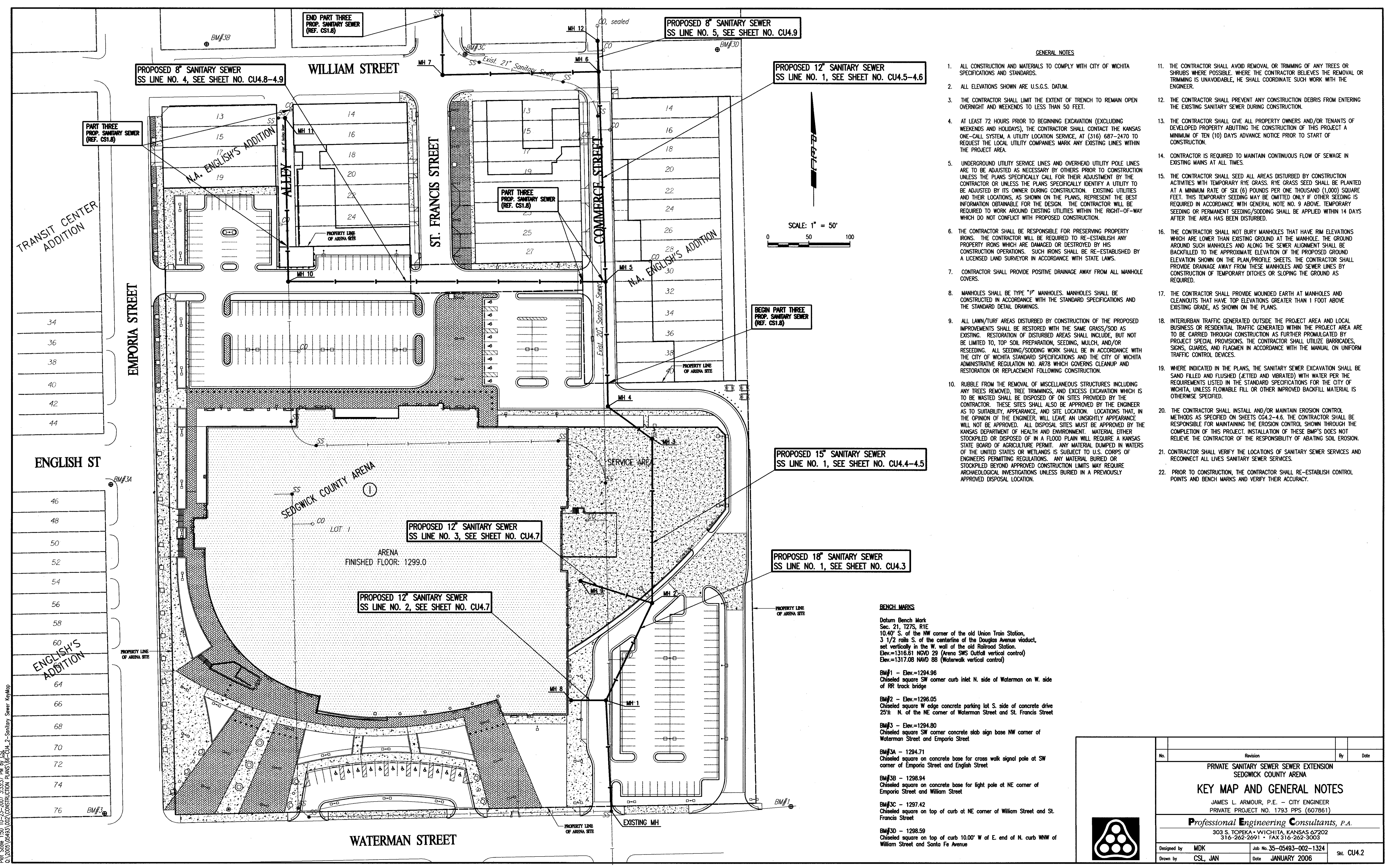
PACKAGE REVISIONS	NO.	DATE	DESCRIPTION



KEYPLAN	
PROJECT NO. 05220	ISSUED BY: PEC
DRAWN BY: CSL	REVIEWED BY: RRY
ISSUE DATE: 10-26-2007	
SHEET TITLE: SANITARY SEWER KEY MAP	

**SANITARY SEWER
 KEY MAP**

CU4.2



GENERAL NOTES

- ALL CONSTRUCTION AND MATERIALS TO COMPLY WITH CITY OF WICHITA SPECIFICATIONS AND STANDARDS.
- ALL ELEVATIONS SHOWN ARE U.S.G.S. DATUM.
- THE CONTRACTOR SHALL LIMIT THE EXTENT OF TRENCH TO REMAIN OPEN OVERNIGHT AND WEEKENDS TO LESS THAN 50 FEET.
- AT LEAST 72 HOURS PRIOR TO BEGINNING EXCAVATION (EXCLUDING WEEKENDS AND HOLIDAYS), THE CONTRACTOR SHALL CONTACT THE KANSAS ONE-CALL SYSTEM, A UTILITY LOCATION SERVICE, AT (316) 687-2470 TO REQUEST THE LOCAL UTILITY COMPANIES MARK ANY EXISTING LINES WITHIN THE PROJECT AREA.
- UNDERGROUND UTILITY SERVICE LINES AND OVERHEAD UTILITY POLE LINES ARE TO BE ADJUSTED AS NECESSARY BY OTHERS PRIOR TO CONSTRUCTION UNLESS THE PLANS SPECIFICALLY CALL FOR THEIR ADJUSTMENT BY THE CONTRACTOR OR UNLESS THE PLANS SPECIFICALLY IDENTIFY A UTILITY TO BE ADJUSTED BY ITS OWNER DURING CONSTRUCTION. EXISTING UTILITIES AND THEIR LOCATIONS, AS SHOWN ON THE PLANS, REPRESENT THE BEST INFORMATION OBTAINABLE FOR THE DESIGN. THE CONTRACTOR WILL BE REQUIRED TO WORK AROUND EXISTING UTILITIES WITHIN THE RIGHT-OF-WAY WHICH DO NOT CONFLICT WITH PROPOSED CONSTRUCTION.
- THE CONTRACTOR SHALL BE RESPONSIBLE FOR PRESERVING PROPERTY IRONS. THE CONTRACTOR WILL BE REQUIRED TO RE-ESTABLISH ANY PROPERTY IRONS WHICH ARE DAMAGED OR DESTROYED BY HIS CONSTRUCTION OPERATIONS. SUCH IRONS SHALL BE RE-ESTABLISHED BY A LICENSED LAND SURVEYOR IN ACCORDANCE WITH STATE LAWS.
- CONTRACTOR SHALL PROVIDE POSITIVE DRAINAGE AWAY FROM ALL MANHOLE COVERS.
- MANHOLES SHALL BE TYPE "P" MANHOLES. MANHOLES SHALL BE CONSTRUCTED IN ACCORDANCE WITH THE STANDARD SPECIFICATIONS AND THE STANDARD DETAIL DRAWINGS.
- ALL LAWN/TURF AREAS DISTURBED BY CONSTRUCTION OF THE PROPOSED IMPROVEMENTS SHALL BE RESTORED WITH THE SAME GRASS/SOD AS EXISTING. RESTORATION OF DISTURBED AREAS SHALL INCLUDE, BUT NOT BE LIMITED TO, TOP SOIL PREPARATION, SEEDING, MULCH, AND/OR RESEEDING. ALL SEEDING/SODDING WORK SHALL BE IN ACCORDANCE WITH THE CITY OF WICHITA STANDARD SPECIFICATIONS AND THE CITY OF WICHITA ADMINISTRATIVE REGULATION NO. AR78 WHICH GOVERNS CLEANUP AND RESTORATION OR REPLACEMENT FOLLOWING CONSTRUCTION.
- RUBBLE FROM THE REMOVAL OF MISCELLANEOUS STRUCTURES INCLUDING ANY TREES REMOVED, TREE TRIMMINGS, AND EXCESS EXCAVATION WHICH IS TO BE WASTED SHALL BE DISPOSED OF ON SITES PROVIDED BY THE CONTRACTOR. THESE SITES SHALL ALSO BE APPROVED BY THE ENGINEER AS TO SUITABILITY, APPEARANCE, AND SITE LOCATION. LOCATIONS THAT, IN THE OPINION OF THE ENGINEER, WILL LEAVE AN UNSIGHTLY APPEARANCE WILL NOT BE APPROVED. ALL DISPOSAL SITES MUST BE APPROVED BY THE KANSAS DEPARTMENT OF HEALTH AND ENVIRONMENT. MATERIAL EITHER STOCKPILED OR DISPOSED OF IN A FLOOD PLAIN WILL REQUIRE A KANSAS STATE BOARD OF AGRICULTURE PERMIT. ANY MATERIAL DUMPED IN WATERS OF THE UNITED STATES OR WETLANDS IS SUBJECT TO U.S. CORPS OF ENGINEERS PERMITTING REGULATIONS. ANY MATERIAL BURIED OR STOCKPILED BEYOND APPROVED CONSTRUCTION LIMITS MAY REQUIRE ARCHAEOLOGICAL INVESTIGATIONS UNLESS BURIED IN A PREVIOUSLY APPROVED DISPOSAL LOCATION.
- THE CONTRACTOR SHALL AVOID REMOVAL OR TRIMMING OF ANY TREES OR SHRUBS WHERE POSSIBLE. WHERE THE CONTRACTOR BELIEVES THE REMOVAL OR TRIMMING IS UNAVOIDABLE, HE SHALL COORDINATE SUCH WORK WITH THE ENGINEER.
- THE CONTRACTOR SHALL PREVENT ANY CONSTRUCTION DEBRIS FROM ENTERING THE EXISTING SANITARY SEWER DURING CONSTRUCTION.
- THE CONTRACTOR SHALL GIVE ALL PROPERTY OWNERS AND/OR TENANTS OF DEVELOPED PROPERTY ADJACENT TO THE CONSTRUCTION OF THIS PROJECT A MINIMUM OF TEN (10) DAYS ADVANCE NOTICE PRIOR TO START OF CONSTRUCTION.
- CONTRACTOR IS REQUIRED TO MAINTAIN CONTINUOUS FLOW OF SEWAGE IN EXISTING MAINS AT ALL TIMES.
- THE CONTRACTOR SHALL SEED ALL AREAS DISTURBED BY CONSTRUCTION ACTIVITIES WITH TEMPORARY RYE GRASS. RYE GRASS SEED SHALL BE PLANTED AT A MINIMUM RATE OF SIX (6) POUNDS PER ONE THOUSAND (1,000) SQUARE FEET. THIS TEMPORARY SEEDING MAY BE OMITTED ONLY IF OTHER SEEDING IS REQUIRED IN ACCORDANCE WITH GENERAL NOTE NO. 9 ABOVE. TEMPORARY SEEDING OR PERMANENT SEEDING/SODDING SHALL BE APPLIED WITHIN 14 DAYS AFTER THE AREA HAS BEEN DISTURBED.
- THE CONTRACTOR SHALL NOT BURY MANHOLES THAT HAVE RIM ELEVATIONS WHICH ARE LOWER THAN EXISTING GROUND AT THE MANHOLE. THE GROUND AROUND SUCH MANHOLES AND ALONG THE SEWER ALIGNMENT SHALL BE BACKFILLED TO THE APPROXIMATE ELEVATION OF THE PROPOSED GROUND ELEVATION SHOWN ON THE PLAN/PROFILE SHEETS. THE CONTRACTOR SHALL PROVIDE DRAINAGE AWAY FROM THESE MANHOLES AND SEWER LINES BY CONSTRUCTION OF TEMPORARY DITCHES OR SLOPING THE GROUND AS REQUIRED.
- THE CONTRACTOR SHALL PROVIDE MOUNDING EARTH AT MANHOLES AND CLEANOUTS THAT HAVE TOP ELEVATIONS GREATER THAN 1 FOOT ABOVE EXISTING GRADE, AS SHOWN ON THE PLANS.
- INTERURBAN TRAFFIC GENERATED OUTSIDE THE PROJECT AREA AND LOCAL BUSINESS OR RESIDENTIAL TRAFFIC GENERATED WITHIN THE PROJECT AREA TO BE CARRIED THROUGH CONSTRUCTION AS FURTHER PROMULGATED BY PROJECT SPECIAL PROVISIONS. THE CONTRACTOR SHALL UTILIZE BARRICADES, SIGNS, GUARDS, AND FLAGMEN IN ACCORDANCE WITH THE MANUAL ON UNIFORM TRAFFIC CONTROL DEVICES.
- WHERE INDICATED IN THE PLANS, THE SANITARY SEWER EXCAVATION SHALL BE SAND FILLED AND FLUSHED (JETTED AND VIBRATED) WITH WATER PER THE REQUIREMENTS LISTED IN THE STANDARD SPECIFICATIONS FOR THE CITY OF WICHITA, UNLESS FLOWABLE FILL OR OTHER IMPROVED BACKFILL MATERIAL IS OTHERWISE SPECIFIED.
- THE CONTRACTOR SHALL INSTALL AND/OR MAINTAIN EROSION CONTROL METHODS AS SPECIFIED ON SHEETS CG4.2-4.6. THE CONTRACTOR SHALL BE RESPONSIBLE FOR MAINTAINING THE EROSION CONTROL SHOWN THROUGH THE COMPLETION OF THIS PROJECT. INSTALLATION OF THESE BMP'S DOES NOT RELIEVE THE CONTRACTOR OF THE RESPONSIBILITY OF ABATING SOIL EROSION.
- CONTRACTOR SHALL VERIFY THE LOCATIONS OF SANITARY SEWER SERVICES AND RECONNECT ALL LINES SANITARY SEWER SERVICES.
- PRIOR TO CONSTRUCTION, THE CONTRACTOR SHALL RE-ESTABLISH CONTROL POINTS AND BENCH MARKS AND VERIFY THEIR ACCURACY.

BENCH MARKS

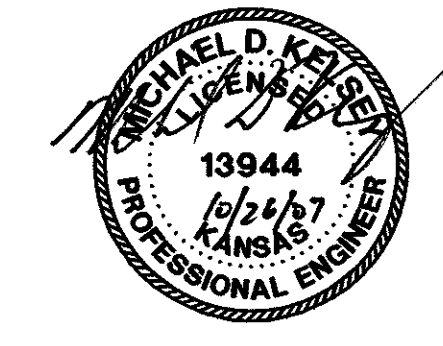
- Datum Bench Mark
 Sec. 21, T27S, R1E
 10.40' S. of the NW corner of the old Union Train Station,
 3 1/2 rods S. of the centerline of the Douglas Avenue viaduct,
 set vertically in the W. wall of the old Railroad Station.
 Elev.=1316.51 NVD 29 (Avenue SWS Outfall vertical control)
 Elev.=1317.08 NVD 88 (Waterwalk vertical control)
- BM#1 - Elev.=1294.96
 Chiseled square SW corner curb inlet N. side of Waterman on W. side of RR track bridge
- BM#2 - Elev.=1296.05
 Chiseled square W edge concrete parking lot S. side of concrete drive 25'± N. of the NE corner of Waterman Street and St. Francis Street
- BM#3 - Elev.=1294.80
 Chiseled square SW corner concrete slab sign base NW corner of Waterman Street and Emporia Street
- BM#3A - 1294.71
 Chiseled square on concrete base for cross walk signal pole at SW corner of Emporia Street and English Street
- BM#3B - 1298.94
 Chiseled square on concrete base for light pole at NE corner of Emporia Street and William Street
- BM#3C - 1297.42
 Chiseled square on top of curb at NE corner of William Street and St. Francis Street
- BM#3D - 1298.59
 Chiseled square on top of curb 10.00' W of E. end of N. curb WNW of William Street and Santa Fe Avenue

No.	Revision	By	Date

**PRIVATE SANITARY SEWER SEWER EXTENSION
 SEDGWICK COUNTY ARENA**
KEY MAP AND GENERAL NOTES
 JAMES L. ARMOUR, P.E. - CITY ENGINEER
 PRIVATE PROJECT NO. 1793 PPS (607861)
Professional Engineering Consultants, P.A.
 303 S. TOPEKA • WICHITA, KANSAS 67202
 316-262-2691 • FAX 316-262-3003

Designed by: MDK Job No. 35-05493-002-1324 Sht. CU4.2
 Drawn by: CSL, JAN Date: JANUARY 2006

Sheet 10-19-2007 2:55:58 PM by: CSL
 C:\2006\05493\002\CONSTRUCTION PLANS\86\CU4.2-Sanitary Sewer KeyMap.dwg

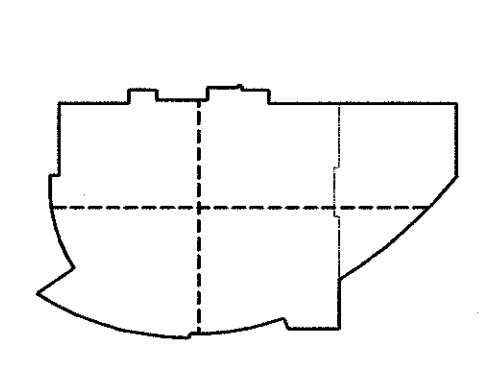


arenadesign
CONSULTANTS, P.C.
MECHANICAL ENGINEERS
ARCHITECTS
PLUMBERS
ELECTRICIANS
AUDIO VISUAL CONSULTANTS
FOOD SERVICE CONSULTANTS

**SEDGWICK COUNTY
ARENA**
500 E. WATERMAN, WICHITA, KS 67202

FOR CONSTRUCTION
OCTOBER 26, 2007

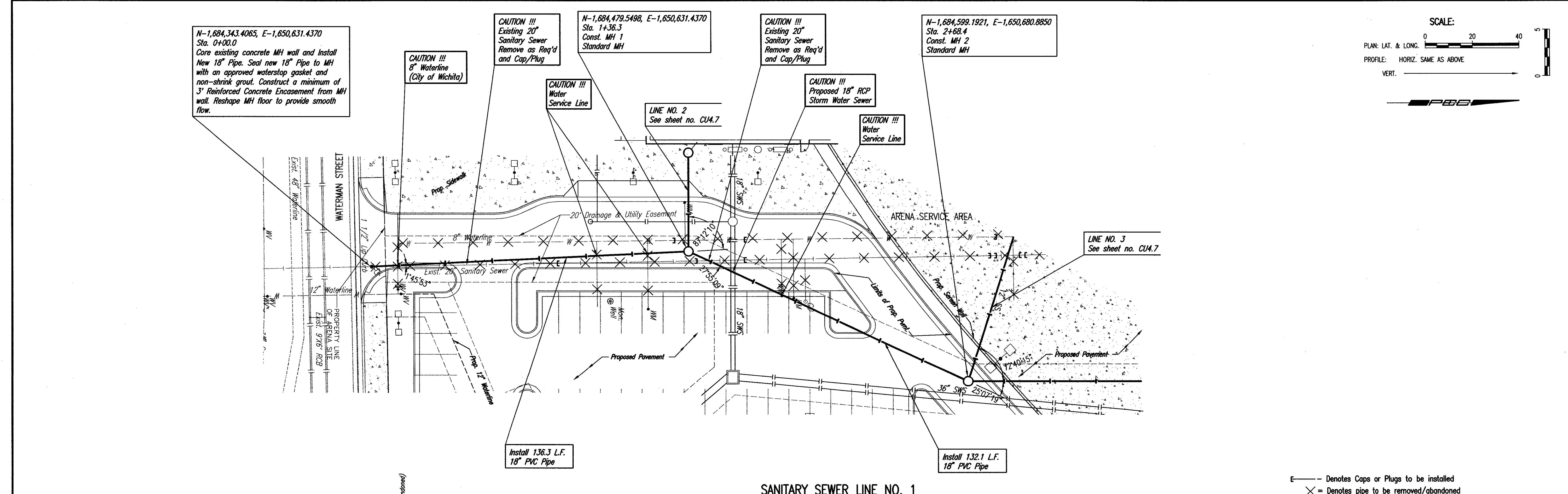
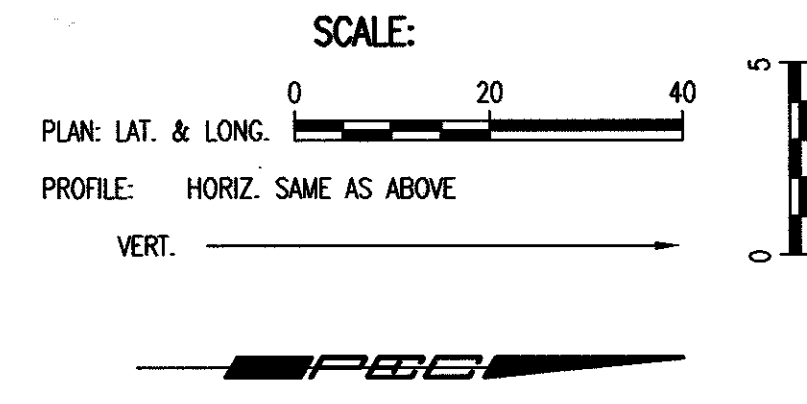
NO.	DATE	DESCRIPTION



PROJECT NO. 06220	ISSUED BY: PEC
DRAWN BY: CSL	REVIEWED BY: RRY
ISSUE DATE: 10-26-2007	

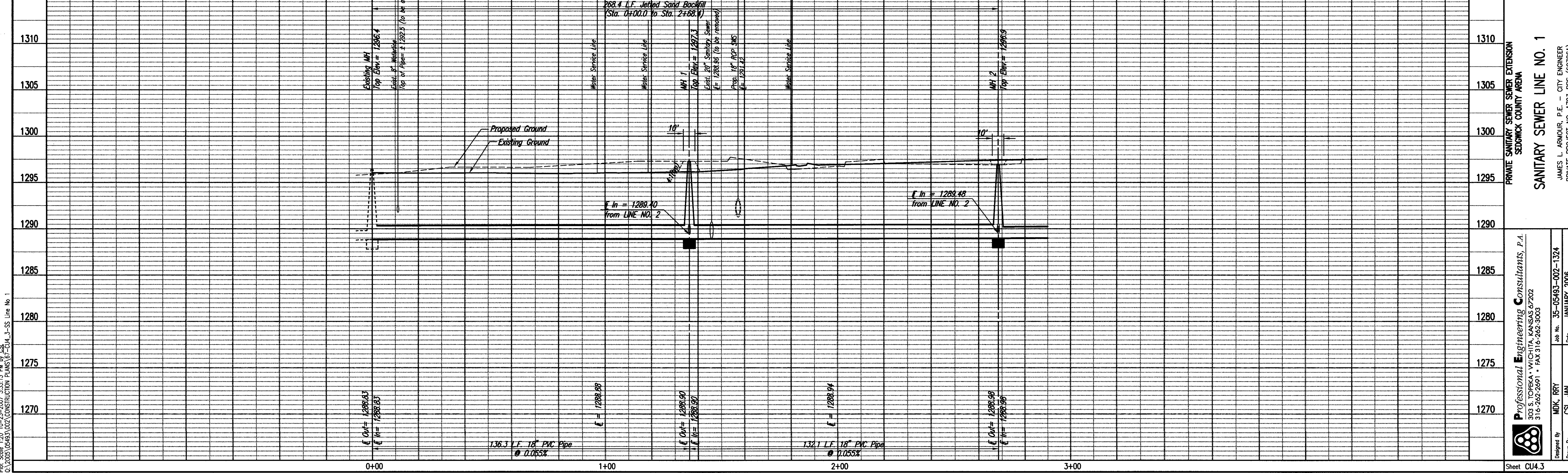
SHEET TITLE:
**SANITARY SEWER
LINE NO. 1**

CU43



--- Denotes Caps or Plugs to be installed
X = Denotes pipe to be removed/abandoned

SANITARY SEWER LINE NO. 1



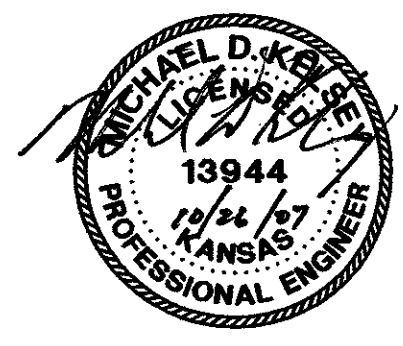
PRIVATE SANITARY SEWER EXTENSION
SEDGWICK COUNTY ARENA
SANITARY SEWER LINE NO. 1
JAMES L. ARMOUR, P.E. - CITY ENGINEER
PRIVATE PROJECT NO. 1793 PPS (607861)

Professional Engineering Consultants, P.A.
303 S. TOPEKA • WICHITA, KANSAS 67202
316-262-2691 • FAX 316-262-3003
Designed By: MOK, RRY
Drawn By: CSL, MAN
Job No. 35-05463-002-1324
Date: JANUARY 2006
Sheet CU4.3

PLAN	CHECKED	DATE

PROFILE	CHECKED	DATE

Scale: 10'-22'-00" = 1" (20' = 1" Max.)
DRAWN BY: MOK, RRY
DATE: 10/26/07
PROJECT: SEDGWICK COUNTY ARENA
SHEET: SANITARY SEWER LINE NO. 1

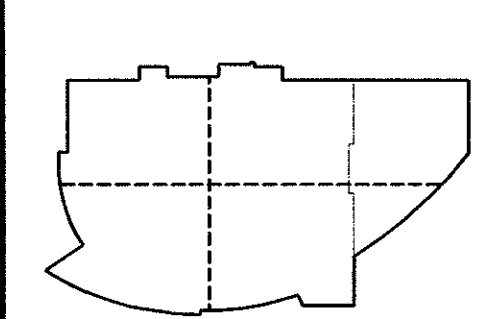


arenadesign.net
CORPORATE DESIGN
ARCHITECTURE MECHANICAL
PLUMBING
ELECTRICAL
CIVIL
LAW
WALTER B. MOORE
STRUCTURAL ENGINEER
PROFESSIONAL ENGINEERING
CONSULTANTS
GOSSELWINSTON ASSOCIATES, INC.
CONSULTANTS
AUDIO VISUAL CONSULTANT
BIGELOW
FOOD SERVICE CONSULTANT

**SEDGWICK COUNTY
ARENA**
500 E. WATERMAN, WICHITA, KS 67202

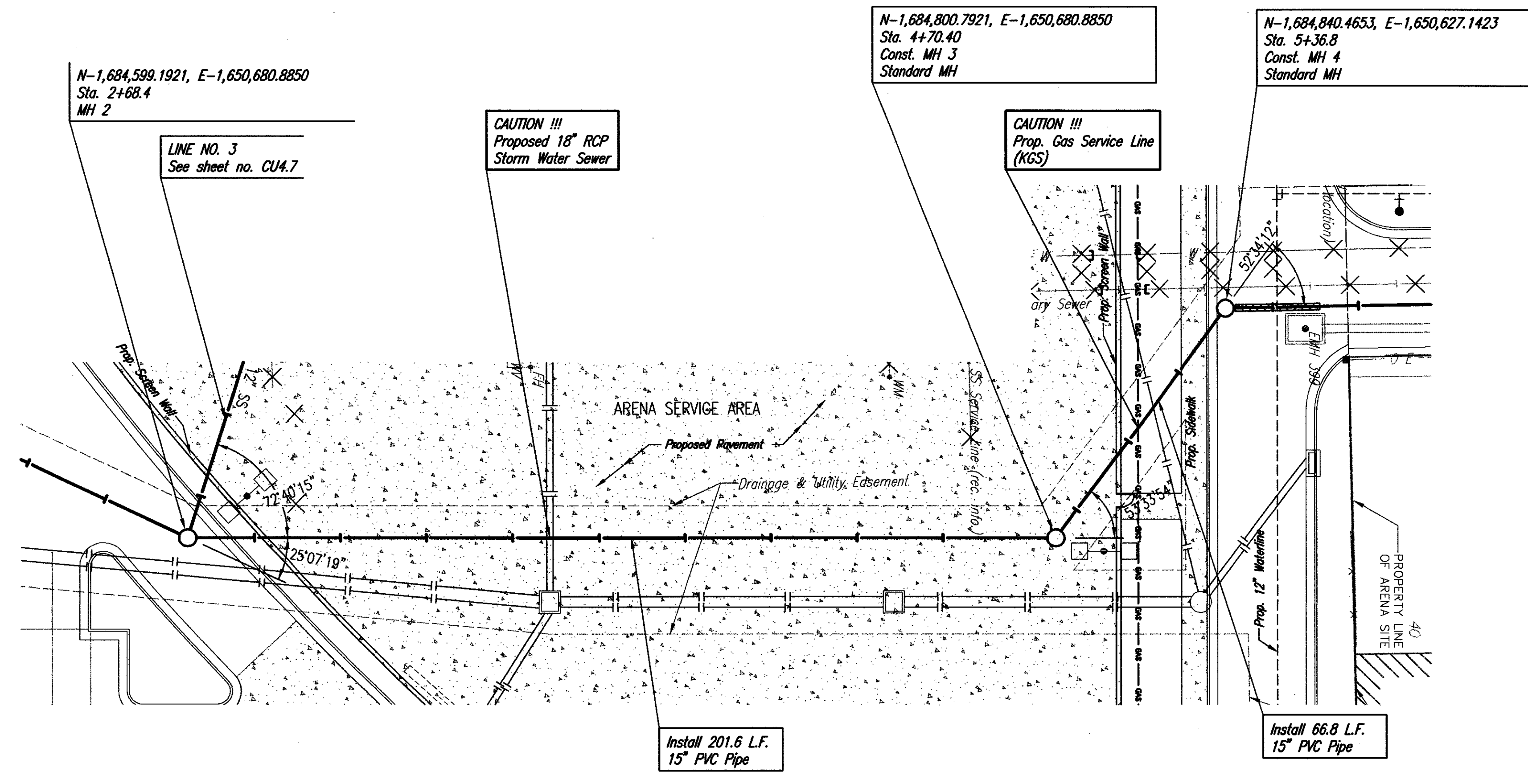
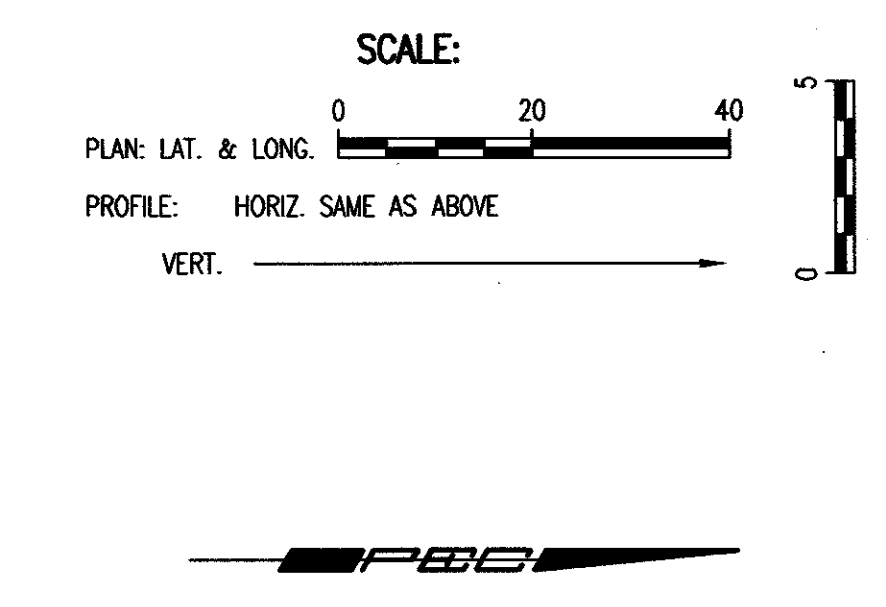
**FOR CONSTRUCTION
OCTOBER 26, 2007**

NO.	DATE	DESCRIPTION

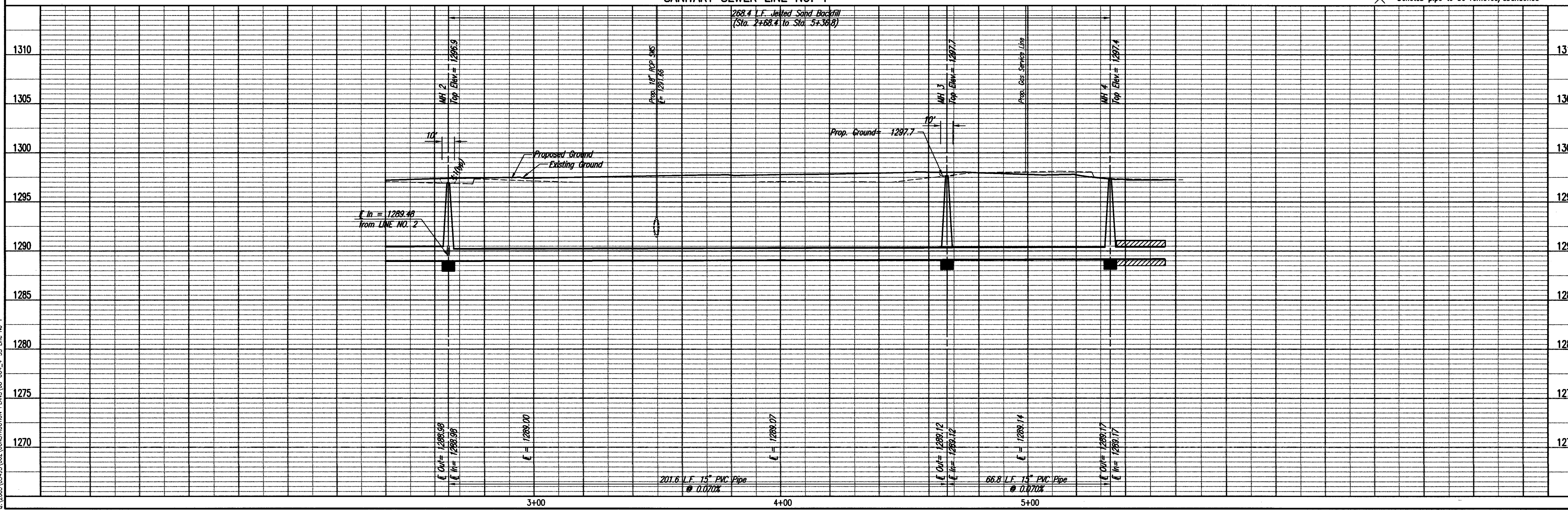


KEYPLAN
PROJECT NO.
ISSUED BY:
DRAWN BY:
REVIEWED BY:
ISSUE DATE:
SHEET TITLE:

**SANITARY SEWER
LINE NO. 1**



SANITARY SEWER LINE NO. 1



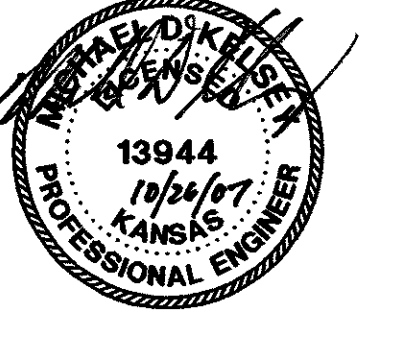
PRIVATE SANITARY SEWER EXTENSION SEDGWICK COUNTY ARENA SANITARY SEWER LINE NO. 1 JAMES L. ARNOUR, P.E. - CITY ENGINEER PRIVATE PROJECT NO. 1793 PPS (60786)
Professional Engineering Consultants, P.A. 303 S. TOPEKA - WICHITA, KANSAS 67202 316-262-2491 - FAX 316-262-5434
Designed By: MDK, RRY Checked By: CSL, JAN Date: JANUARY 2006

Sheet CU4.4

PLAN	CHECKED	DATE

PROFILE	CHECKED	DATE

Saved 10-22-2007 3:35:12 PM by CSL
C:\WORK\04433\DOC\CONSTRUCTION PLANS\044-SS-Line No.1

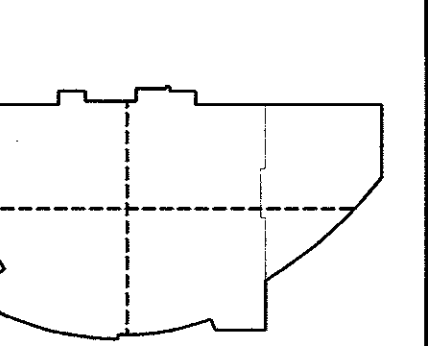


arenadesign
S E D G W I C K C O U N T Y
K A N S A S R E G I S T E R E D
P R O F E S S I O N A L E N G I N E E R S

**SEDGWICK COUNTY
ARENA**
500 E. WATERMAN, WICHITA, KS 67202

**FOR CONSTRUCTION
OCTOBER 26, 2007**

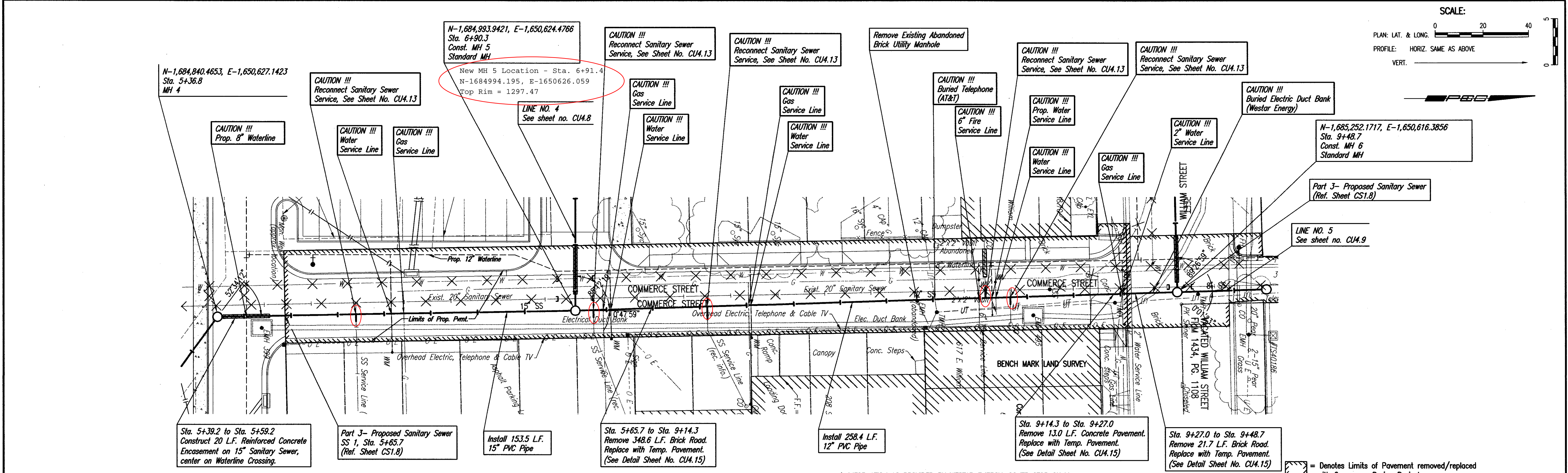
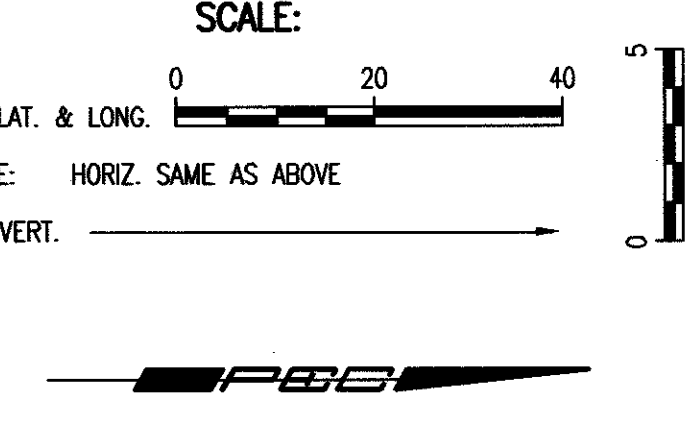
NO.	DATE	DESCRIPTION



PROJECT NO.	ISSUED BY:
06220	PEC
DRAWN BY:	REVIEWED BY:
CSL	RRY
ISSUE DATE:	10-26-2007

**SANITARY SEWER
LINE NO. 1**

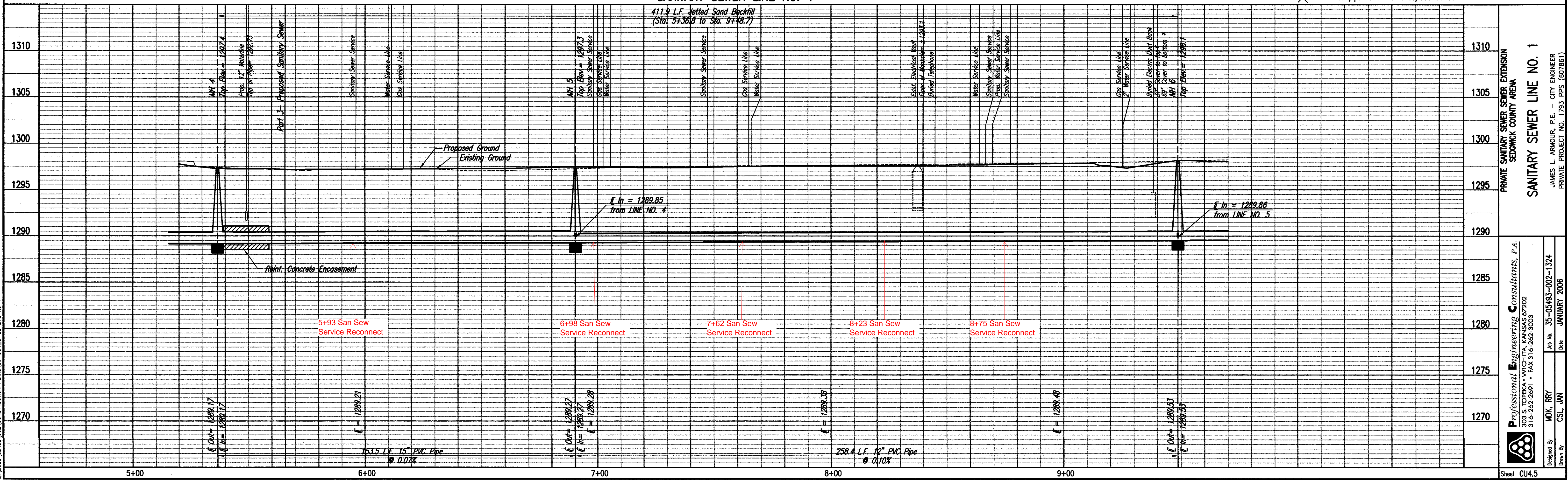
CU4.5



DATE	BY	CHECKED	CHECKED

DATE	BY	CHECKED	CHECKED

SANITARY SEWER LINE NO. 1
* INFORMATION AS PROVIDED BY WESTAR ENERGY. CONTRACTOR SHALL VERIFY THE HORIZONTAL/VERTICAL LOCATIONS PRIOR TO CONSTRUCTION.



Saved: 10-22-2007 10:41:14 AM by CSL
 C:\PROJECTS\2006\02\CONSTRUCTION PLANS\BSC\C4.5-SS LINE NO. 1

PRIVATE SANITARY SEWER EXTENSION SEDGWICK COUNTY ARENA	
SANITARY SEWER LINE NO. 1	
Professional Engineering Consultants, P.A. 303 S. TOPEKA - WICHITA, KANSAS 67202 316-262-2891 • FAX 316-262-2888	JAMES L. ARNOLD, P.E. - CITY ENGINEER PRIVATE PROJECT NO. 1793 PPS (60786)
Drawn By: MDK, RRY Checked By: CSL, JAN	Job No. 35-05493-02-1324 Date: JANUARY 2006



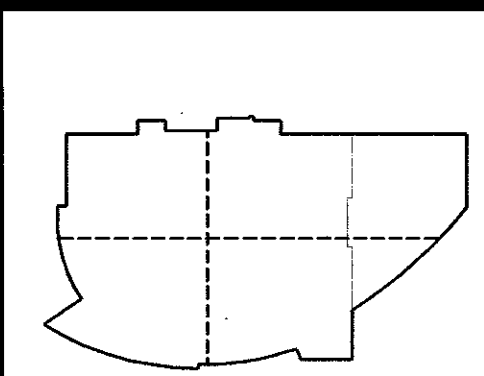


arenadesign
 CONSULTANTS
 ENGINEERS ARCHITECTS
 MECHANICAL ELECTRICAL PLUMBING
 ASSOCIATE ARCHITECTS
 ASSOCIATE ENGINEERS
 WRIGHTSON, JOHNSON, HADDON &
 ASSOCIATES
 AUDIO VISUAL CONSULTANTS
 BIGELOW
 FOOD SERVICE CONSULTANT

**SEDGWICK COUNTY
 ARENA**
 500 E. WATERMAN, WICHITA, KS 67202

FOR CONSTRUCTION
 OCTOBER 26, 2007

NO.	DATE	DESCRIPTION

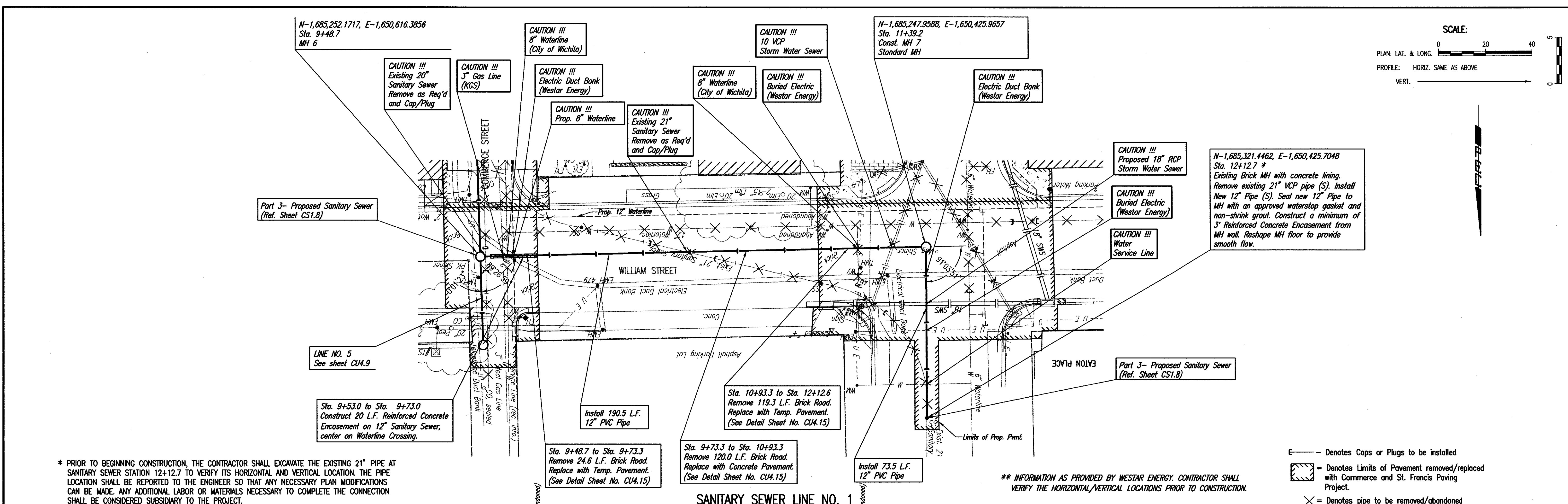


KEY PLAN	
PROJECT NO. 06220	ISSUED BY: PEC
DRAWN BY: CSL	REVIEWED BY: RRY
ISSUE DATE: 10-26-2007	

SHEET TITLE:
**SANITARY SEWER
 LINE NO. 1**

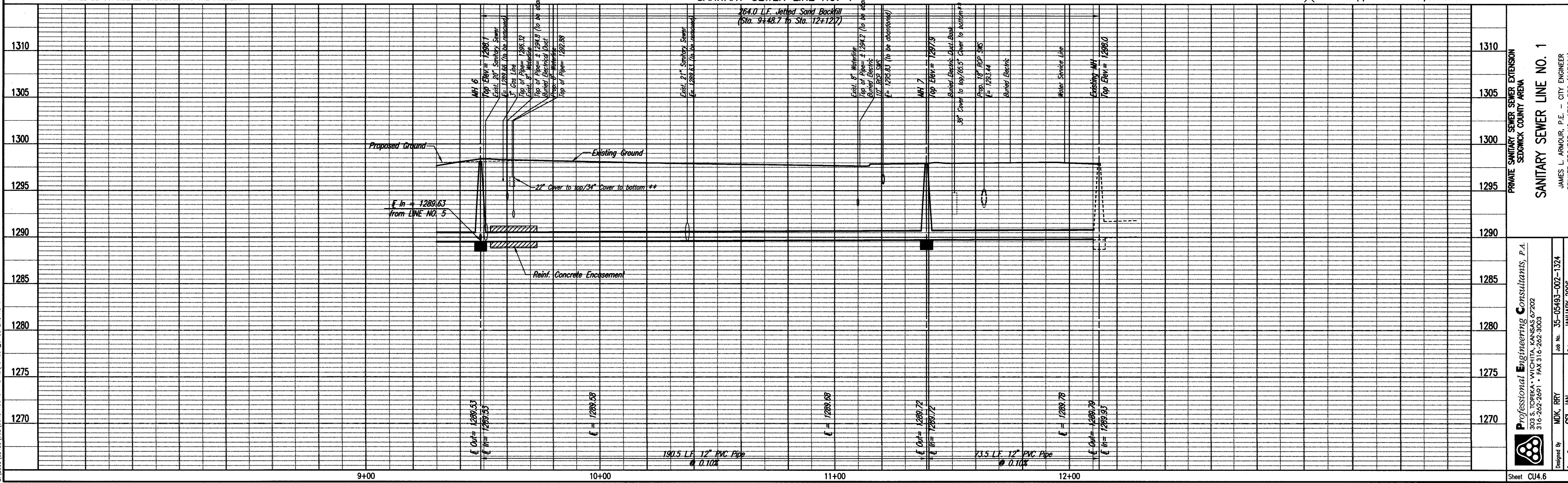
CU46

Professional Engineering Consultants, P.A.
 303 S. TOPEKA • WICHITA, KANSAS 67202 • 316-262-2691 • FAX 316-262-3003
 www.pcc1.com



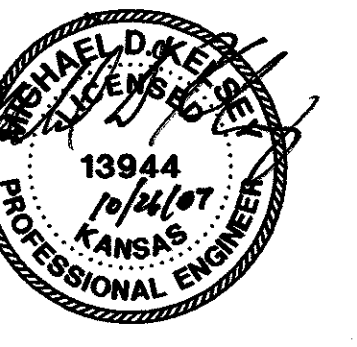
PLAN	CHECKED	DATE

PROFILE	CHECKED	DATE



Scale: 10'-25'-2007, 1:3000 AN 1:6, 5/10
 07/03/03 (04/03) (02) CONSTRUCTION PLANS
 07/03/03 (04/03) (02) CONSTRUCTION PLANS
 07/03/03 (04/03) (02) CONSTRUCTION PLANS

Professional Engineering Consultants, P.A.
 303 S. TOPEKA • WICHITA, KANSAS 67202
 316-262-2691 • FAX 316-262-3003
 Job No. 35-05493-007-1324
 Date JANUARY 2006
 Drawn By: MOK, RRY
 Checked By: CSL, JAN



arenadesign ARCHITECTS ENGINEERS PLUMBERS

WILSON DARNELL MANN ARCHITECTS
ARCHITECT OF RECORD
WICHITA, KS 67202

HOSSER LIVINGSTON ASSOCIATES, INC.
ASSOCIATE ARCHITECT

HOEKSPORT
DESIGN ARCHITECT
WICHITA, KS 67202

WALTER P. MOORE
STRUCTURAL ENGINEER
PROFESSIONAL ENGINEERING
CONSULTANTS

AUDIO VISUAL CONSULTANT
BIGELOW
MECHANICAL ENGINEER

MECHANICAL ENGINEERING
CONSULTANTS

MECHANICAL ENGINEERING
CONSULTANTS

MECHANICAL ENGINEERING
CONSULTANTS

**SEDGWICK COUNTY
ARENA**

500 E. WATERMAN, WICHITA, KS 67202

FOR CONSTRUCTION
OCTOBER 26, 2007

PACKAGE
REVISIONS

NO.	DATE	DESCRIPTION

Professional Engineering Consultants, P.A.
316-262-2600 • FAX 316-262-3002
316-262-2601 • FAX 316-262-2602

Designed By: MKR, RRY
Drawn By: CSL, JAN

Job No. 35-05493-002-1324
Date: JANUARY 2006

Sheet CU4.7

KEYPLAN

PROJECT NO.	ISSUED BY:
98229	PEC

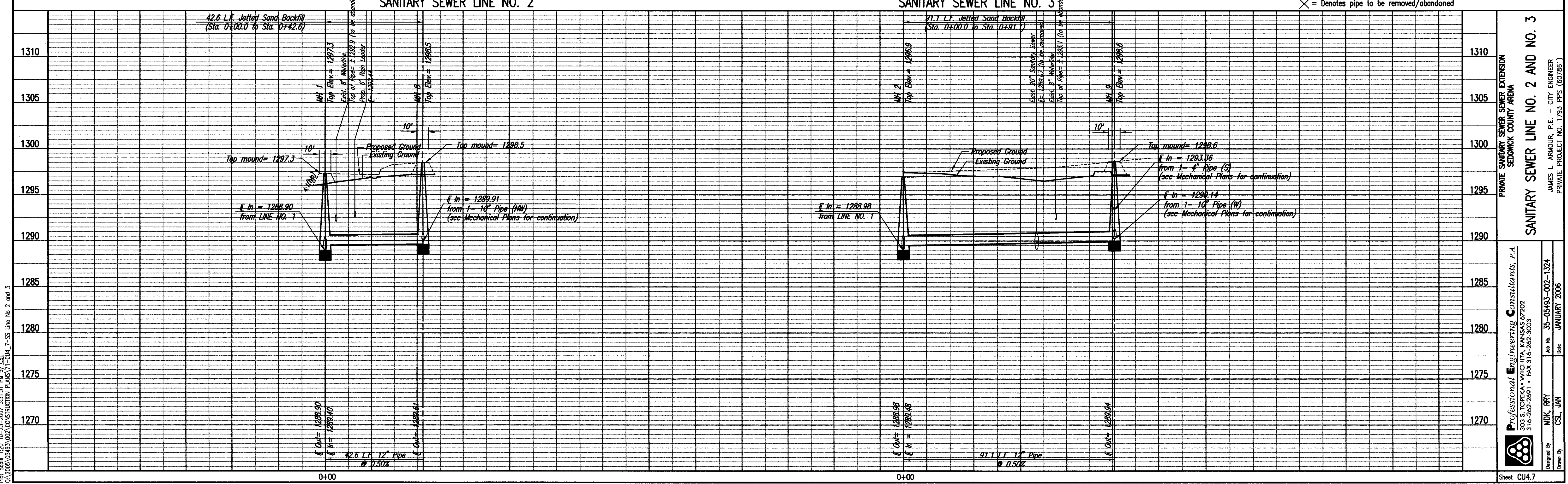
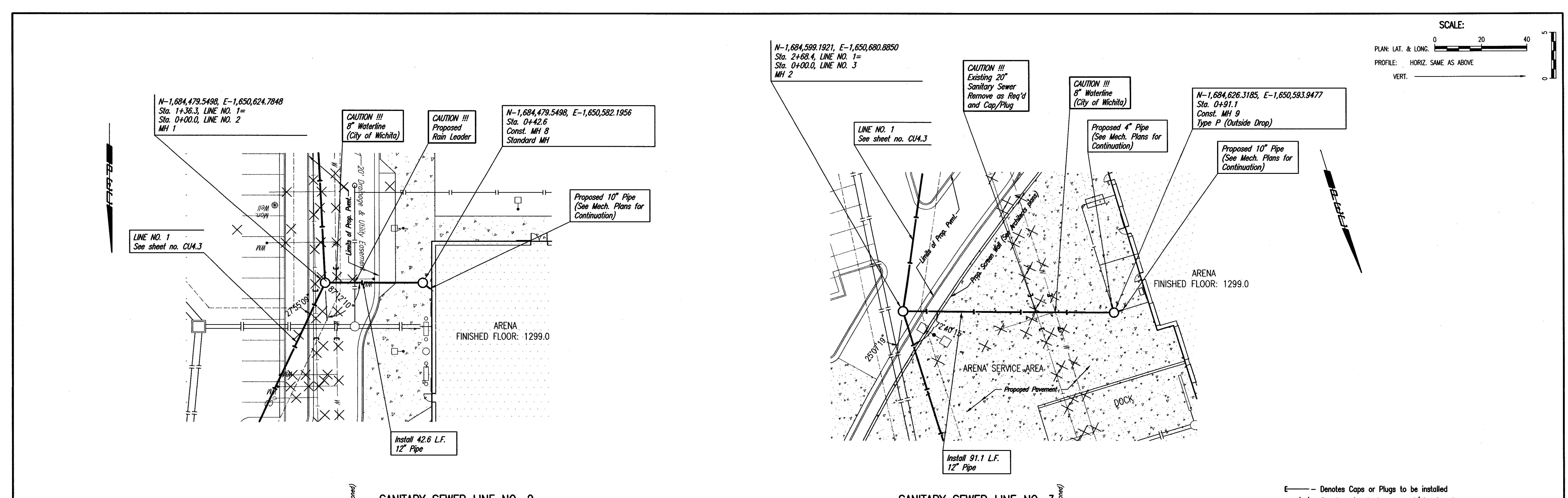
DRAWN BY:	REVIEWED BY:
CSL	RRY

ISSUE DATE: 10-26-2007

SHEET TITLE:

**SANITARY SEWER
LINE NO. 2 AND NO. 3**

CU4.7



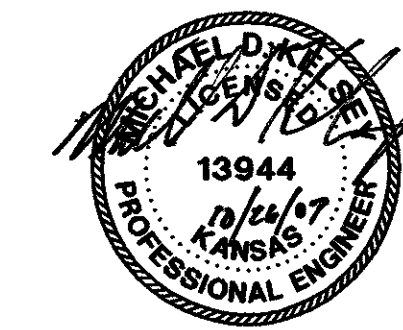
PLAN

BY	DATE

PROFILE

BY	DATE

Scale: 10'-0"=1" (10'-0"=1" for CS);
1/4"=1' (1/4"=1' for CS)
CS: 316-262-2600 (CONSTRUCTION PLANS);
PE: 316-262-2601 (PROFESSIONAL ENGINEERING);
316-262-2602 (MECHANICAL ENGINEERING)



arenadesign
ARCHITECTS
ENGINEERS
PLUMBERS
MECHANICAL
ELECTRICAL

WALTER P. MOORE
STRUCTURAL ENGINEER
CONSULTANT

WILLIAM S. HADSON &
WILLIAMS, INC.
AUDIO VISUAL CONSULTANT
BIODIVERSITY CONSULTANT
FOOD SERVICE CONSULTANT

HEK SPORT
DESIGN ARCHITECT
ARCHITECT OF RECORD
108 N. Westington
Wichita, KS 67202

WILSON CARNELL MANN ARCHITECTS
ARCHITECTS
108 N. Westington
Wichita, KS 67202

McLURGAGE VANOSKALE AND PERRY
ASSOCIATE ARCHITECT
108 N. Westington
Wichita, KS 67202

GOSSEL LIVINGSTON ASSOCIATES, INC.
CONSULTANTS
108 N. Westington
Wichita, KS 67202

ASSOCIATE ARCHITECT
MECHANICAL ENGINEER
PLUMBER

SEDGWICK COUNTY
ARENA

500 E. WATERMAN, WICHITA, KS 67202

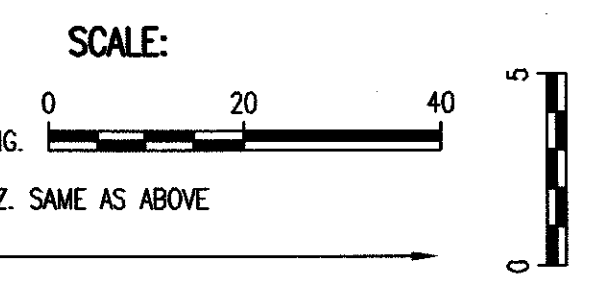
FOR CONSTRUCTION
OCTOBER 26, 2007

NO.	DATE	DESCRIPTION

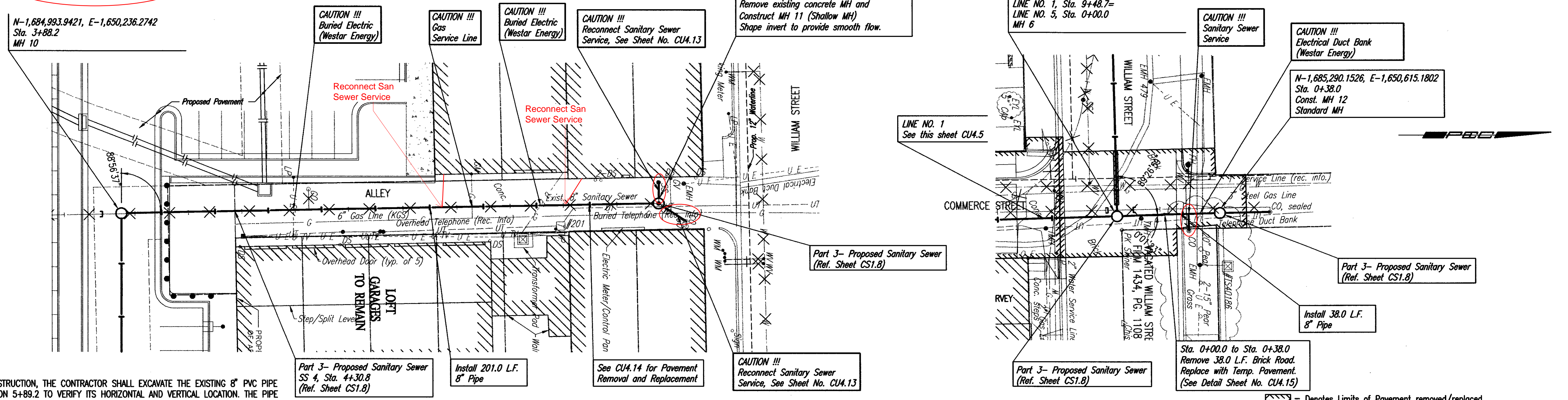
PROJECT NO.	ISSUED BY:
08220	PEC
DRAWN BY:	REVIEWED BY:
CSL	RRY
ISSUE DATE:	10-26-2007

SANITARY SEWER
LINE NO. 4 AND NO. 5

CU4.9



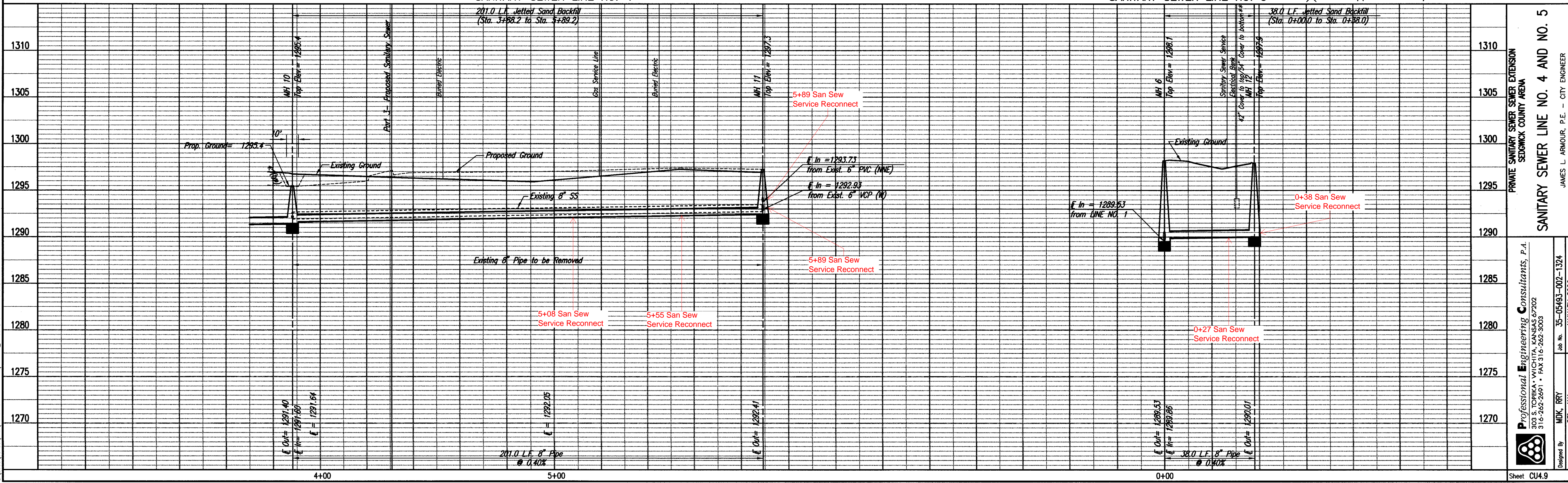
MH 10 Top Rim Elev. = 1295.35
Plan Top Rim Elev. = 1295.40



* PRIOR TO BEGINNING CONSTRUCTION, THE CONTRACTOR SHALL EXCAVATE THE EXISTING 8" PVC PIPE AT SANITARY SEWER STATION 5+89.2 TO VERIFY ITS HORIZONTAL AND VERTICAL LOCATION. THE PIPE LOCATION SHALL BE REPORTED TO THE ENGINEER SO THAT ANY NECESSARY PLAN MODIFICATIONS CAN BE MADE. ANY ADDITIONAL LABOR OR MATERIALS NECESSARY TO COMPLETE THE CONNECTION SHALL BE CONSIDERED SUBSIDIARY TO THE PROJECT.

SANITARY SEWER LINE NO. 4

SANITARY SEWER LINE NO. 5



Save: 10-23-2007 10:59:34 AM by: CS
G:\2005\0420\CONSTRUCTION PLANS\2-CU4.9-SS Line No. 4 and 5

Professional Engineering Consultants, P.A.
303 S. TOPEKA • WICHITA, KANSAS 67202
316-262-2691 • FAX 316-262-2695

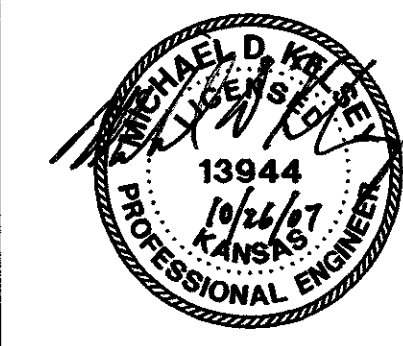
Designed By: MJK, RRY
Drawn By: CSL, WJH

Job No. 35-05493-002-1374
Issue Date: JANUARY 2006

Sheet CU4.9



Professional Engineering Consultants, P.A.
303 S. TOPEKA • WICHITA, KANSAS 67202 • 316-262-2691 • FAX 316-262-2695
www.pec1.com



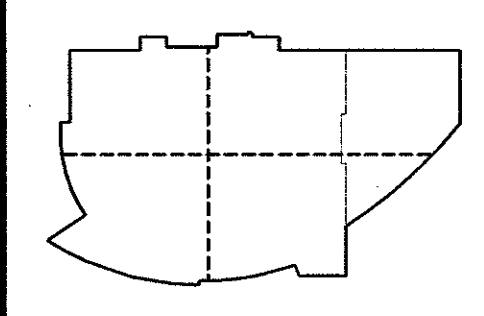
arenadesign
 CONSULTANTS
 ENGINEERS ARCHITECTS
 MECHANICAL ELECTRICAL PLUMBING
 ENGINEERING
 WALTER D. MOORE
 STRUCTURAL ENGINEER
 JAMES L. ARMOUR
 PROFESSIONAL ENGINEER
 CONSULTANT
 WILLIAM S. HADCOCK &
 WILLIAMS, INC.
 AUDIO VISUAL CONSULTANT
 BIGELOW
 FOOD SERVICE CONSULTANT
 MECHANICAL ELECTRICAL PLUMBING ENGINEER
 ASSOCIATE ARCHITECT

**SEDGWICK COUNTY
 ARENA**
 500 E. WATERMAN, WICHITA, KS 67202

**FOR CONSTRUCTION
 OCTOBER 26, 2007**

PACKAGE REVISIONS

NO.	DATE	DESCRIPTION



PROJECT NO. 05220
 ISSUED BY: PEC
 DRAWN BY: RRY
 REVIEWED BY:
 ISSUE DATE: 10-26-2007
 SHEET TITLE:

VERTICAL RISER DETAIL

CU.4.13

Revision _____ By _____ Date _____

**PRIVATE SANITARY SEWER SEWER EXTENSION
 SEDGWICK COUNTY ARENA**

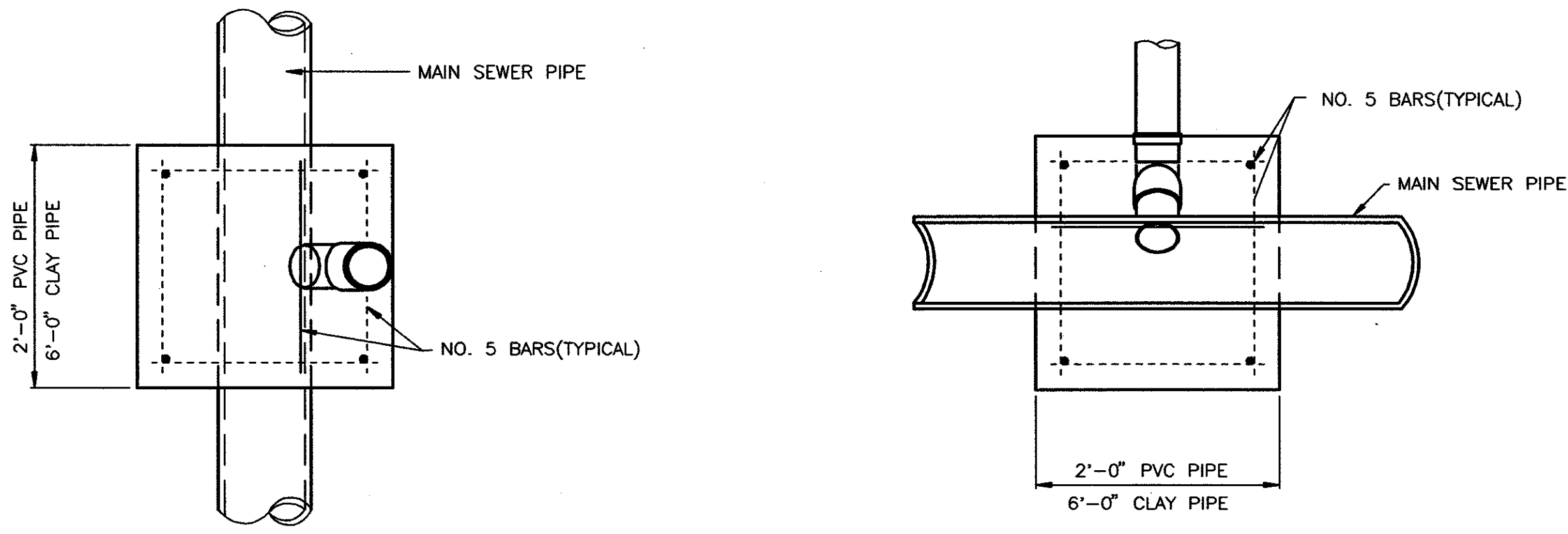
SERVICE RECONNECTION DETAILS

JAMES L. ARMOUR, P.E. - CITY ENGINEER
 PRIVATE PROJECT NO. 1793 PPS (607861)

Professional Engineering Consultants, P.A.
 303 S. TOPEKA • WICHITA, KANSAS 67202
 316-262-2691 • FAX 316-262-3003

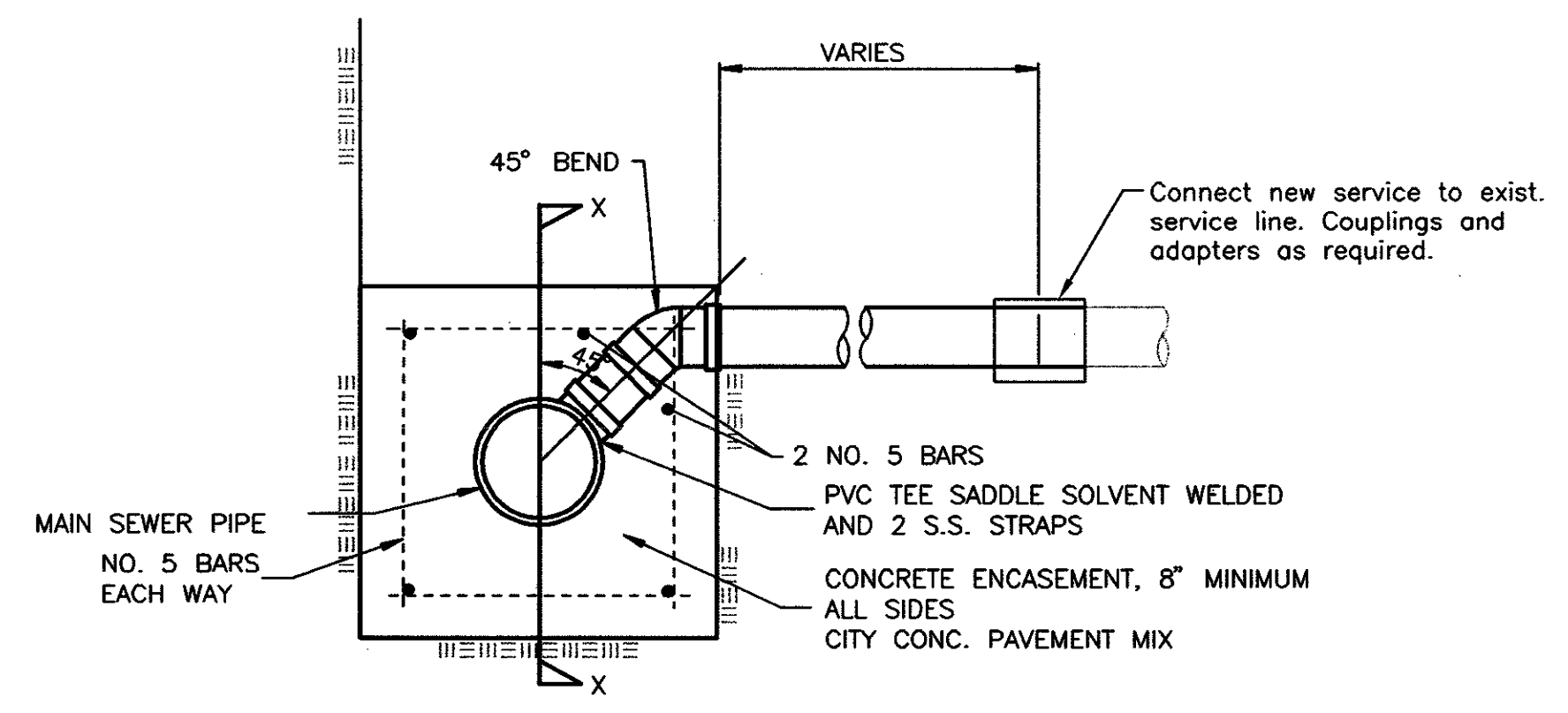
Designed by **MDK** Job No. **35-05493-002-1324** Sht. **CU.4.13**
 Drawn by **CSL, JAN** Date **JANUARY 2006**

- GENERAL NOTES
- SIZING.** Pipe stubs and services shall be sized according to the plans and service table where services are indicated by the plans. Contractor shall verify the size of the existing service line to be connected prior to installing service connection on the new main. Sizing of services and stubs shall be approved by the Construction Engineer prior to installation.
 - SERVICE OR STUB MATERIAL.** Services and stubs shall be constructed of Schedule 40 PVC Pipe, meeting the requirements of the latest revision of A.S.T.M. All pipe joints shall be solvent welded.
 - REINFORCED CONCRETE ENCASEMENT.** Service Connections to clay pipe sanitary sewers shall be reinforced concrete encased both ways from the service centerline. The reinforced concrete encasement shall extend three feet from the service centerline or stop at the first sanitary sewer pipe joint within three feet of the service centerline. Service connections to PVC Sanitary Sewer mains shall be reinforced concrete encased one foot each way from the service centerline. The concrete encasement shall be reinforced using reinforcing steel as shown in the appropriate drawing. The concrete shall conform to the City Standard Specifications for concrete pavement.
 - BEDDING.** Bedding around the sanitary sewer service shall be compacted Pipe Bedding Type 1 or 2. The bedding shall be placed and compacted from the depth of the sanitary sewer main to the top of the sanitary sewer service. Compacted Pipe Bedding Type 1 or 2 shall be required for all services whether constructed in vertical wall or sloped wall trenches. Bedding material and construction practices shall be approved by the Construction Engineer prior to installation.
 - LOCATION MEASURES.** The project inspector shall record and document the location of all service connection constructed as measured from the nearest manhole, indicating the direction from the manhole, the direction and distance from the main, size, and elevation.

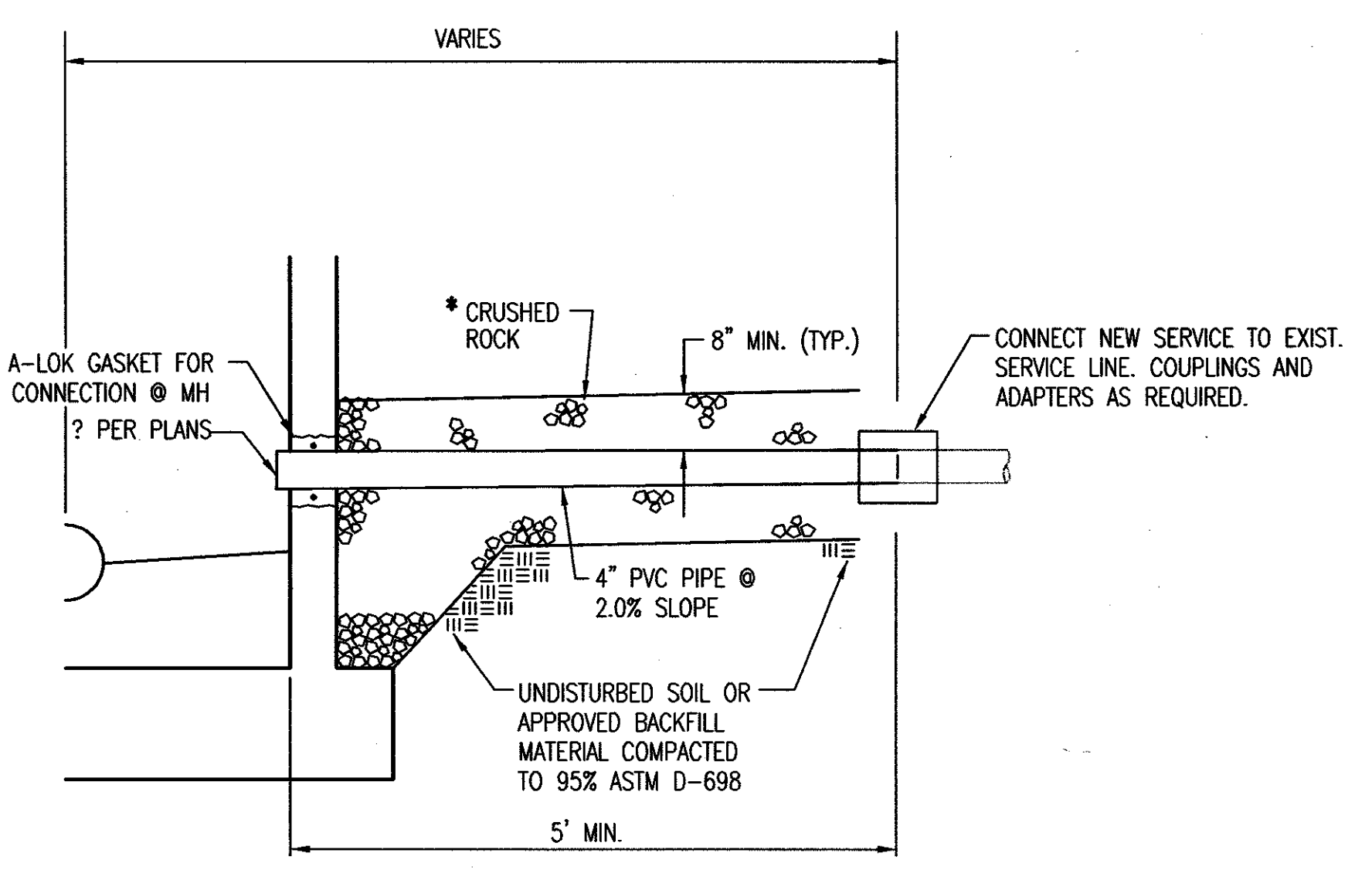


TYPICAL PLAN VIEW

TYPICAL SECTION X-X



SERVICE RECONNECTION DETAIL



MANHOLE SERVICE RECONNECTION

SEWER SERVICE RECONNECTION TABLE

NO.	SIZE	LOCATION		FOR INFORMATION ONLY		RECORD INFORMATION (TO BE COMPLETED BY PROJECT INSPECTOR)			NO.
		LINE NO.	STATION/DIRECTION	APPROXIMATE LENGTH 4" PIPE		DISTANCE FROM NEAREST MANHOLE			
				HORIZONTAL	VERTICAL	UPSTREAM	DOWNSTREAM		
1	15" x 4" Sewer Service Connection	1	5+96/Rt.	5+93	3'	57	7	96	1
2	12" x 4" Sewer Service Connection	1	6+98/Rt.	7+62	6'	71	132	251	2
3	12" x 4" Sewer Service Connection	1	7+47/Rt.	8+23	5'	184	132	187	3
4	12" x 4" Sewer Service Connection	1	8+57/Lt.	8+75	3'	184	74	127	4
5	12" x 4" Sewer Service Connection	1	8+77/Rt.	8+75	3'	184	74	127	5
6	Manhole Sewer Service Connection	4	5+89.2 (W)		6'	MH		MH	6
7	Manhole Sewer Service Connection	4	5+89.2 (NE)		10'	MH		MH	7
8	8" x 4" Sewer Service Connection	5	0+27/Rt.		7'	11		27	8
9	Manhole Sewer Service Connection	5	0+38 (N)		18'	MH		MH	9
			6" Clay Service	4	5+08/Lt.		81	120	
			6" Clay Service	4	5+55/Lt.		34	167	

Save: 10-27-2007 1:59:26 PM by JCS
 C:\PROJECTS\2007\SEDGWICK COUNTY ARENA\CONSTRUCTION PLANS\77-CU.4.13-Service Reconnection Details



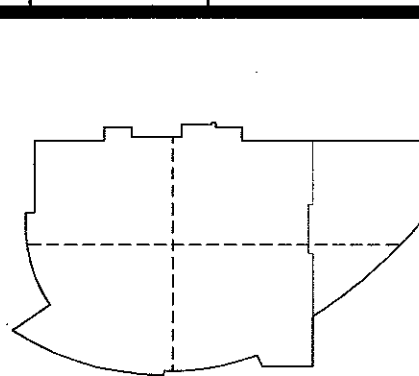
arenadesign
CONSULTANTS, P.C.
MECHANICAL ENGINEERING
PLUMBING ENGINEERING
ELECTRICAL ENGINEERING
ARCHITECTURE
LANDSCAPE ARCHITECTURE
STRUCTURAL ENGINEERING
SURVEYING
ENVIRONMENTAL ENGINEERING
SOIL REMEDIATION ENGINEERING
GEOTECHNICAL ENGINEERING
POND SERVICE CONSULTANT

**SEDGWICK COUNTY
ARENA**
500 E. WATERMAN, WICHITA, KS 67202

FOR CONSTRUCTION
OCTOBER 26, 2007

REVISIONS TABLE

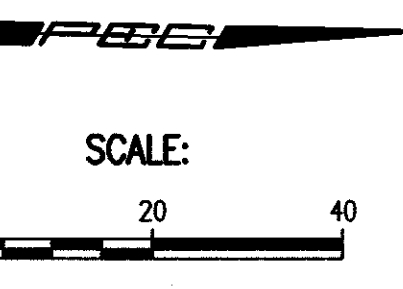
NO.	DATE	DESCRIPTION



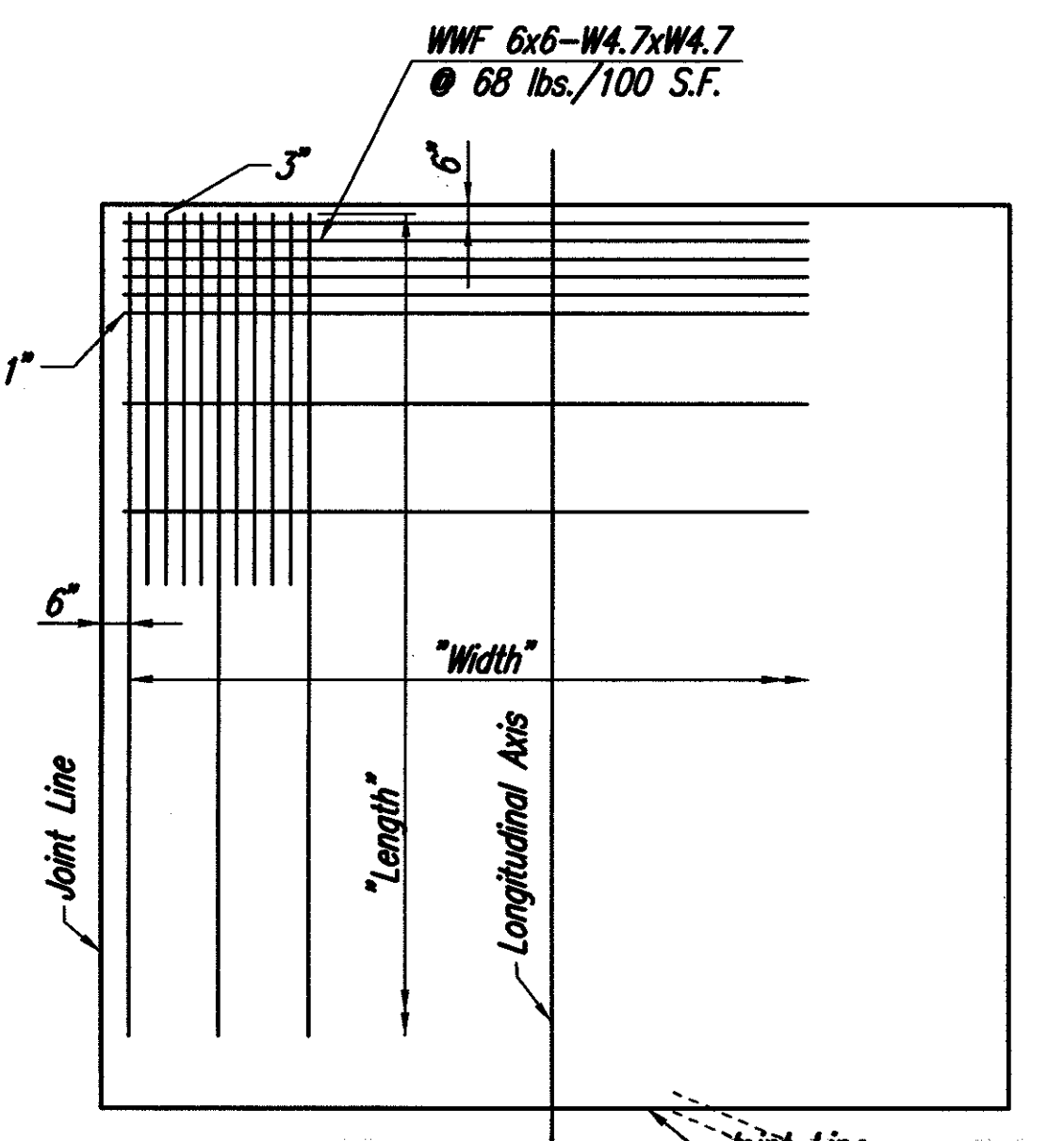
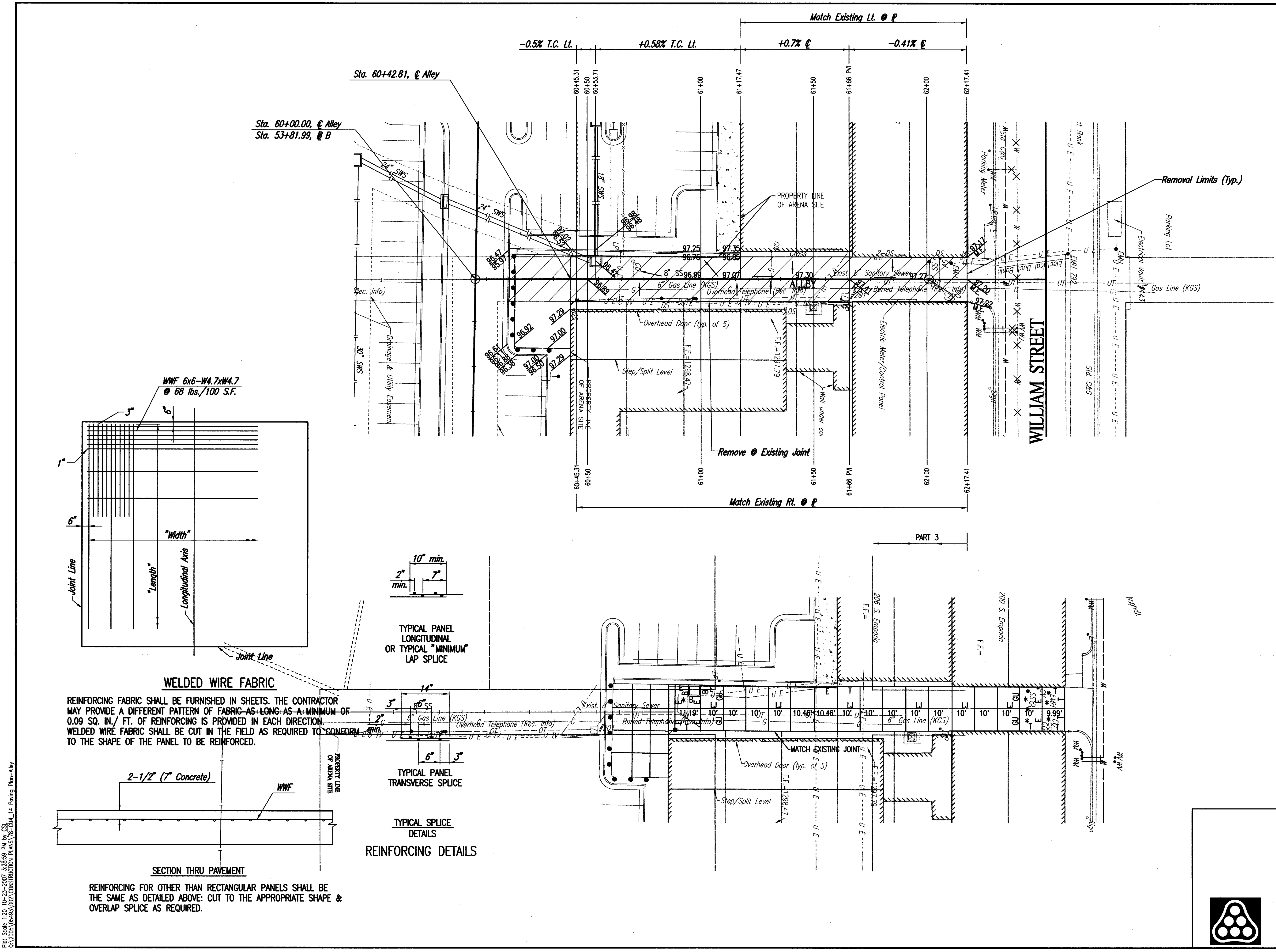
PROJECT NO. 05220
ISSUED BY: PEC
DRAWN BY: CSL
REVIEWED BY: RRY
ISSUE DATE: 10-26-2007

ALLEY PAVEMENT PLAN

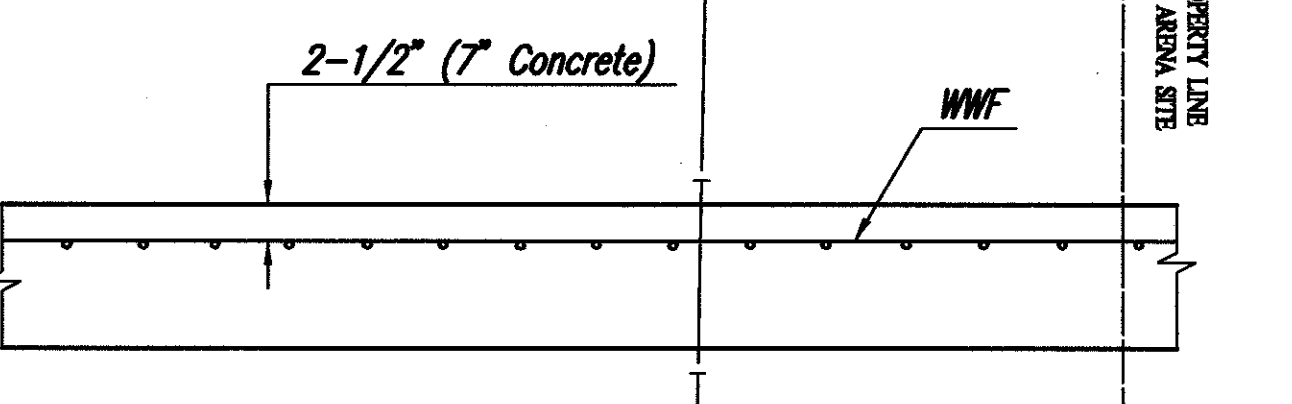
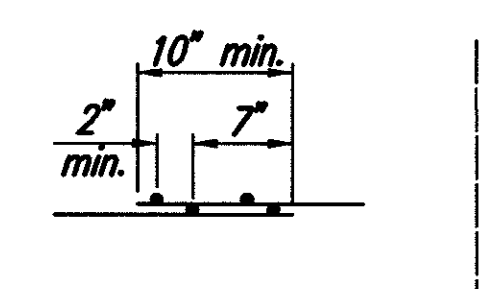
CU.14



- PAVEMENT REMOVAL
 - M.E. - MATCH EXISTING
 - H.P. - HIGH POINT
 - * - INDICATES PANEL TO BE REINFORCED. SEE DETAIL THIS SHEET.
 - † - OMIT DOWEL OR THE BARS THROUGH THIS PORTION OF JOINT.
- CURB TO BE TIED TO CONCRETE PAVEMENT W/ #4 x 2'-5" @ 2'-5" CYRS.
SEE CURB AND GUTTER DETAILS ON SHT. NO. CU.15
- ALL JOINTS TO BE SEALED.
- SEE SHEET CU.15 FOR PAVEMENT DETAILS.
- REF. SHEET CU.4.9 FOR SANITARY SEWER CONSTRUCTION.



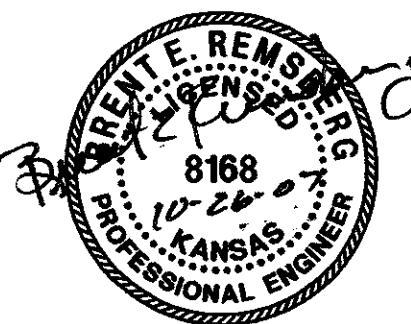
REINFORCING FABRIC SHALL BE FURNISHED IN SHEETS. THE CONTRACTOR MAY PROVIDE A DIFFERENT PATTERN OF FABRIC AS LONG AS A MINIMUM OF 0.09 SQ. IN./ FT. OF REINFORCING IS PROVIDED IN EACH DIRECTION. WELDED WIRE FABRIC SHALL BE CUT IN THE FIELD AS REQUIRED TO CONFORM TO THE SHAPE OF THE PANEL TO BE REINFORCED.



REINFORCING DETAILS

REINFORCING FOR OTHER THAN RECTANGULAR PANELS SHALL BE THE SAME AS DETAILED ABOVE. CUT TO THE APPROPRIATE SHAPE & OVERLAP SPLICE AS REQUIRED.

Saved: 10-23-2007 9:23:30 AM by: CSL
D:\CSL\WORK\2007\SEDGWICK COUNTY ARENA\PLAN\ALLEY PAVING\CU.14_PAVING_ALLEY



arenadesign
C O N S U L T I N G
ARCHITECTS
ENGINEERS
PLUMBERS
ELECTRICIANS
MECHANICAL ENGINEERS
PAINTERS
LANDSCAPE ARCHITECTS
DESIGN ARCHITECT

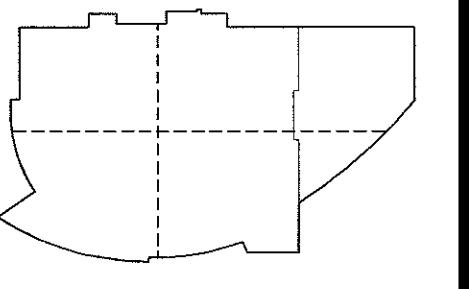
WILSON DARNELL MANN ARCHITECTS
ARCHITECT OF RECORD
WALTER P. MOORE
STRUCTURAL ARCHITECT
WALTER P. MOORE
STRUCTURAL ENGINEER
WALTER P. MOORE
PROFESSIONAL ENGINEERING
CONSULTANTS
GOSSEN LIVINGSTON ASSOCIATES, INC.
ASSOCIATE ARCHITECT
ASSOCIATE PLUMBING ENGINEER
FOOD SERVICE CONSULTANT

SEDGWICK COUNTY ARENA

500 E. WATERMAN, WICHITA, KS 67202

**FOR CONSTRUCTION
OCTOBER 26, 2007**

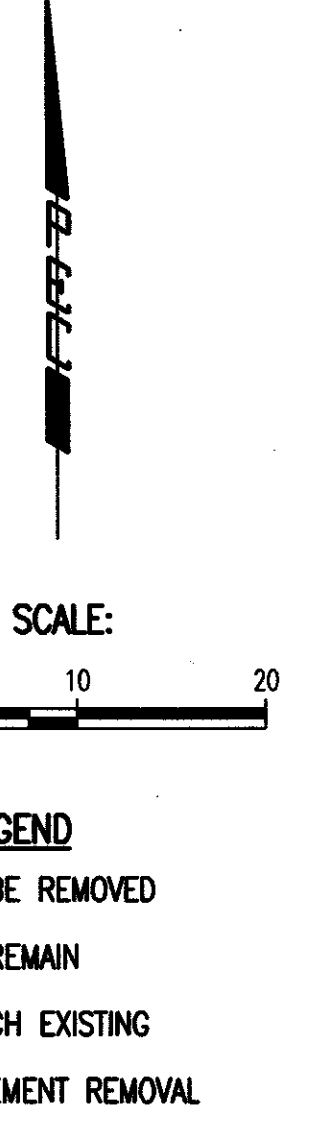
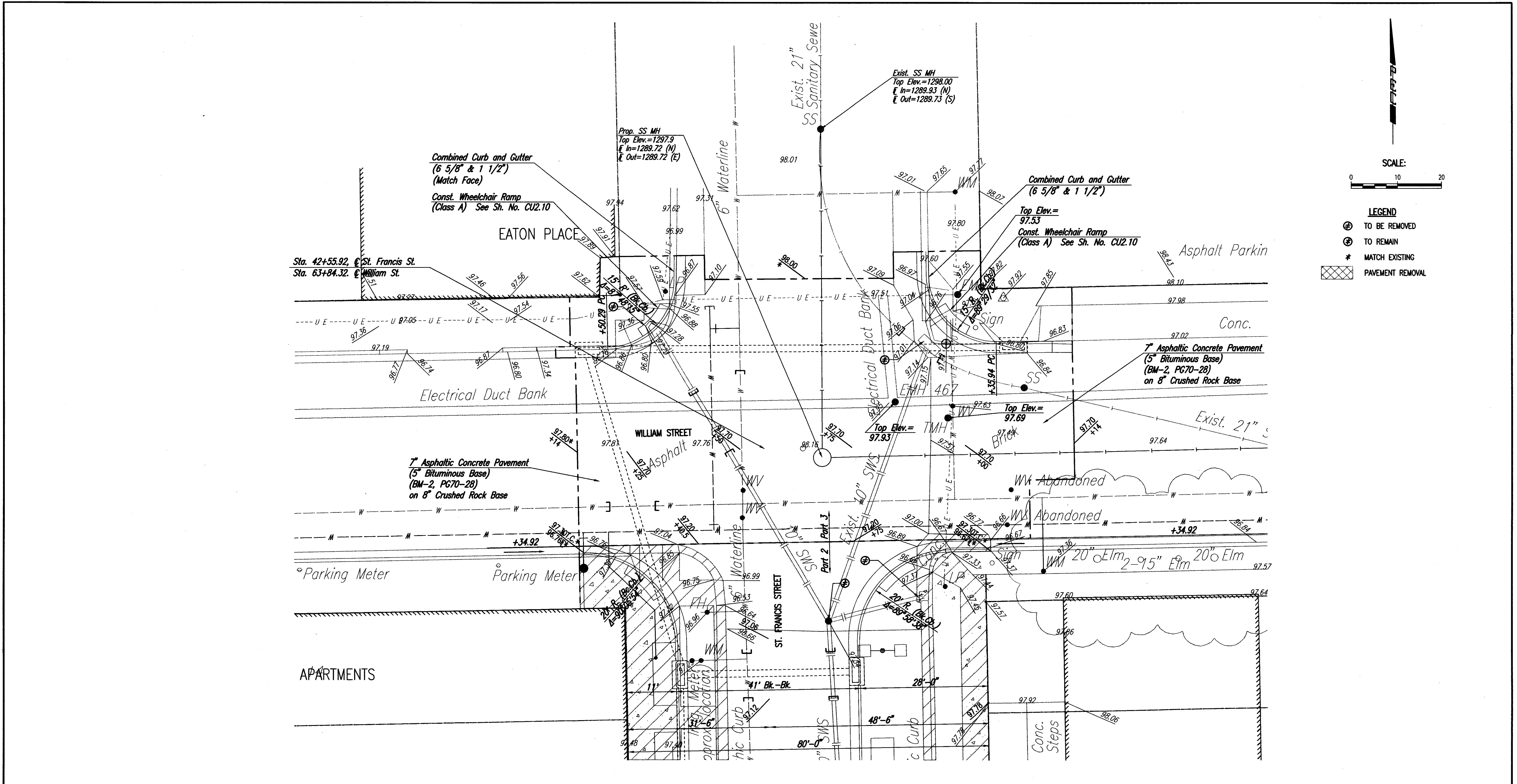
NO.	DATE	DESCRIPTION



KEYPLAN
PROJECT NO.
05220
ISSUED BY:
PEC
DRAWN BY:
SAW
REVIEWED BY:
BER
ISSUE DATE:
10-26-2007
SHEET TITLE:

ST. FRANCIS ST. & WILLIAM ST. INTERSECTION PLAN

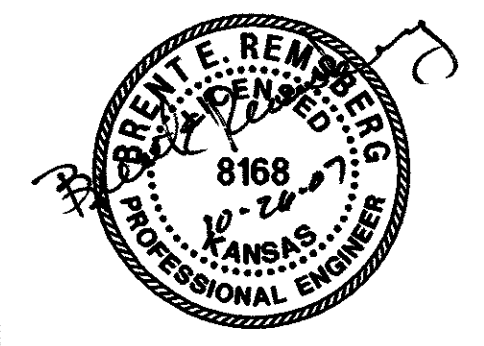
CU.16



LEGEND
⊖ TO BE REMOVED
⊕ TO REMAIN
* MATCH EXISTING
⊠ PAVEMENT REMOVAL

Saved: 10-23-2007 9:26:20 AM by CS
Plot Scale: 1/8" = 2'-0" (1:160)
C:\Users\bermond\Desktop\10-23-2007 11:46:46 AM by CS
C:\Users\bermond\Desktop\10-23-2007 11:46:46 AM by CS

Revised	By	Date
SEDGWICK COUNTY ARENA ROAD IMPROVEMENTS ST. FRANCIS ST. & WILLIAM ST. INTERSECTION PLAN JAMES L. ARMOUR, P.E. - CITY ENGINEER PRIVATE PROJECT NO. 183 PPP (607879)		
Designed by: BER	Job No. 35-05493-002-1324	Sht. CU.16
Drawn by: SAW	Date: JULY 2007	

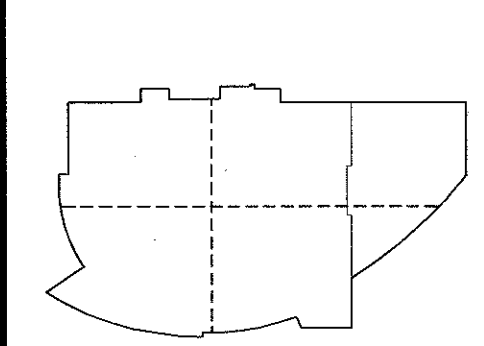


arenadesigned
 CONSULTANTS
 ENGINEERS ARCHITECTS PLUMBERS
 ASSOCIATE MECHANICAL ENGINEERS
 ENGINEER WRIGHTSON, JOHNSON, HADDON &
 WALTER P. MOORE STRUCTURAL ENGINEER
 PROFESSIONAL ENGINEERING
 AUDIO VISUAL CONSULTANT
 BIGELOW FOOD SERVICE CONSULTANT
 MECHANICAL PLUMBING ENGINEER
 ASSOCIATE ARCHITECT

**SEDGWICK COUNTY
 ARENA**
 500 E. WATERMAN, WICHITA, KS 67202

**FOR CONSTRUCTION
 OCTOBER 26, 2007**

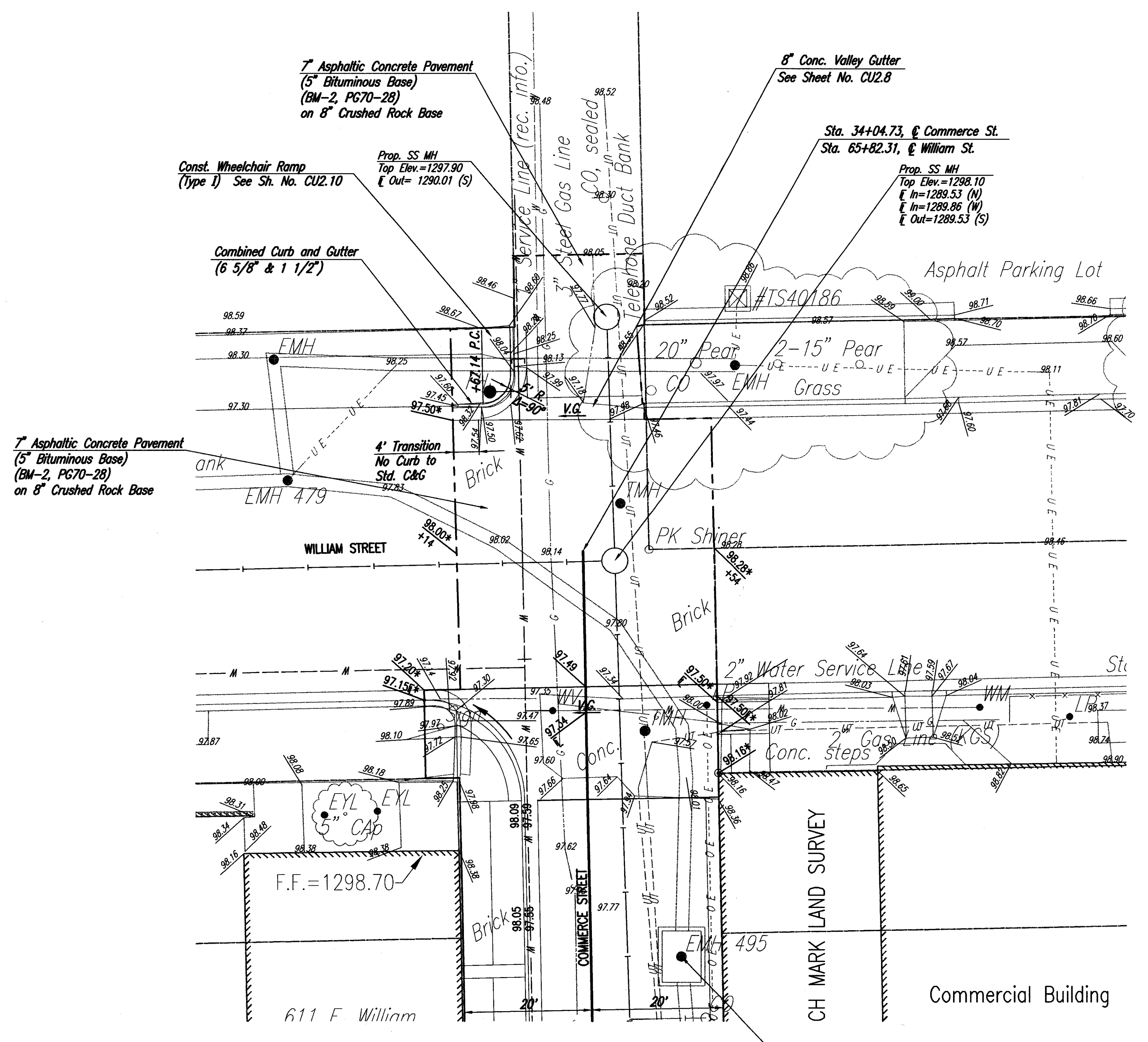
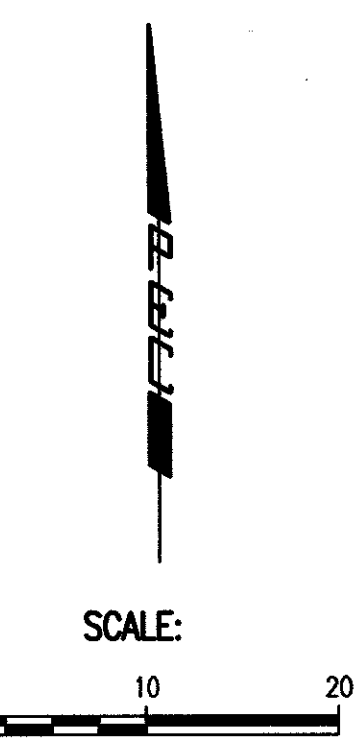
PACKAGE REVISIONS	
NO.	DATE DESCRIPTION



PROJECT NO. 68220	ISSUED BY: PEC
DRAWN BY: SAW	REVIEWED BY: BER
ISSUE DATE: 10-26-2007	

**COMMERCE STREET
 AND WILLIAM STREET
 INTERSECTION PLAN**

CU4.17



Saved: 10-23-2007 8:23:18 AM by CSI
 Plot: State: 1:10 10-22-2007 11:49:52 AM by CSI
 C:\Users\jason\Documents\PLANS\17-Intersection_Plan

Revision	By	Date

SEDGWICK COUNTY ARENA
 ROAD IMPROVEMENTS
**COMMERCE STREET AND WILLIAM STREET
 INTERSECTION PLAN**
 JAMES L. ARMOUR, P.E. - CITY ENGINEER
 PRIVATE PROJECT NO. 183 PPP (607879)

Designed by BER	Job No. 35-05493-002-1324	Sht. CU.17
Drawn by SAW	Date JULY 2007	