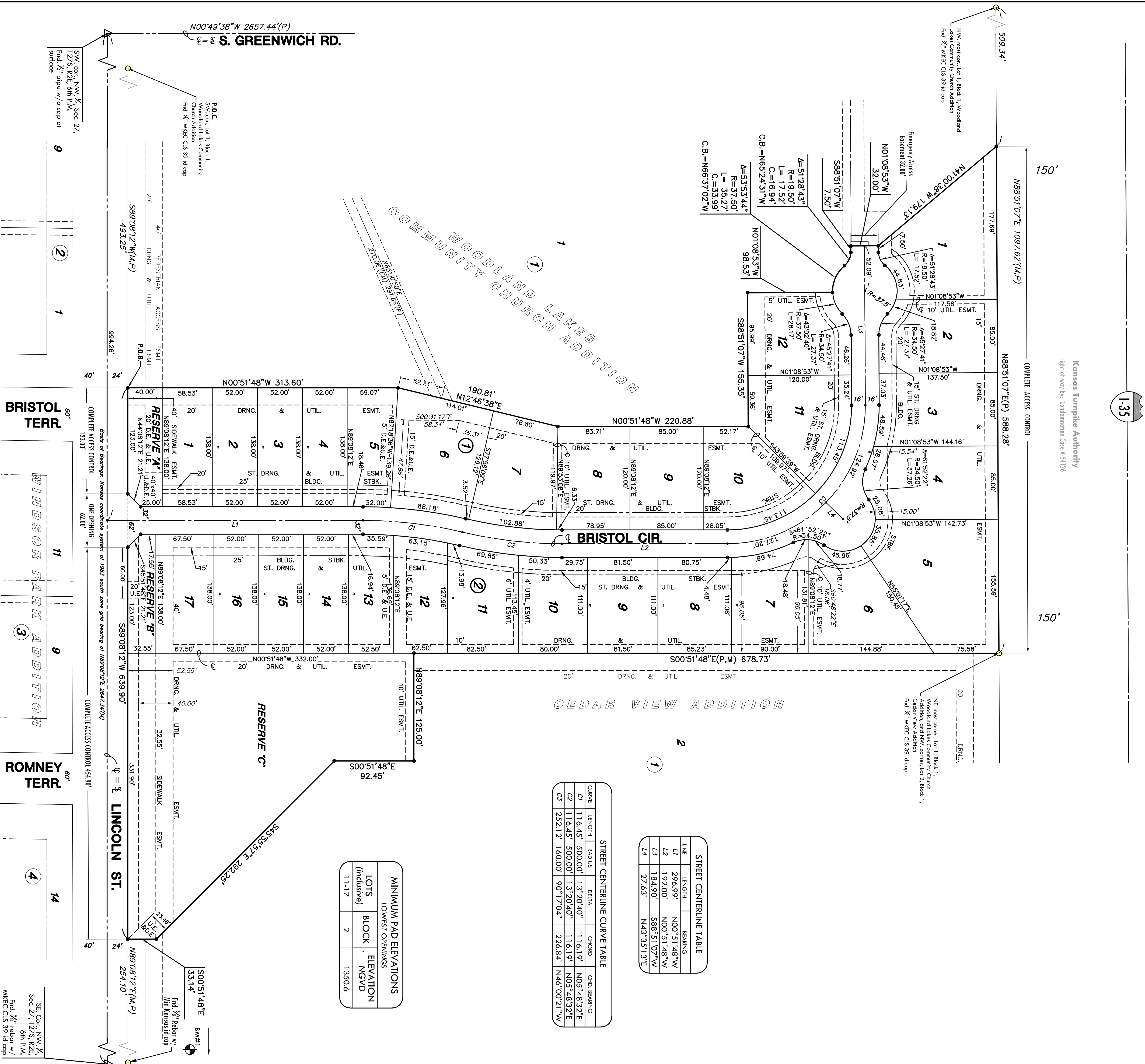


# FINAL PLAT

## CEDAR VIEW VILLAGE ADDITION

### AN ADDITION TO WICHITA, SEDGWICK COUNTY, KANSAS

Kansas Turnpike Authority  
right-of-way by Condominium Case 4,54126



LINE	LENGTH	BEARINGS
L1	296.97'	N00°51'48"W
L2	192.00'	N00°51'48"W
L3	184.50'	S88°51'07"W
L4	27.63'	N43°35'13"E

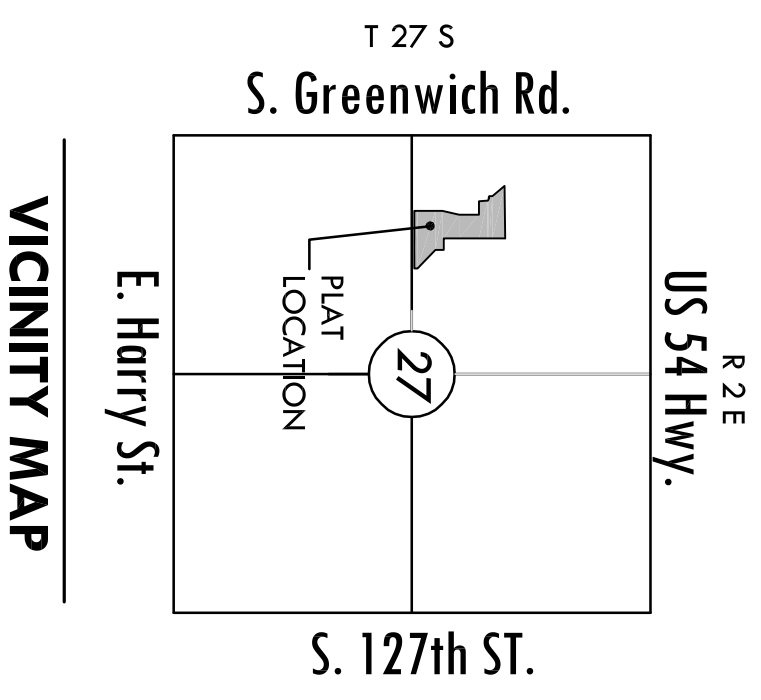
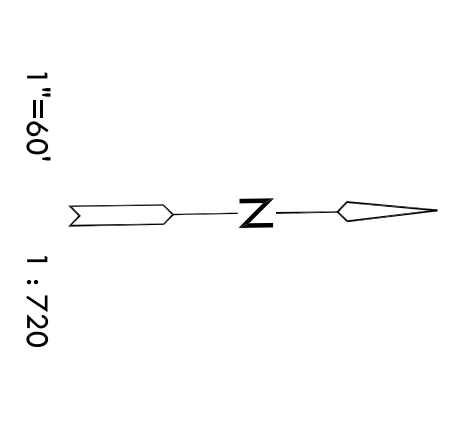
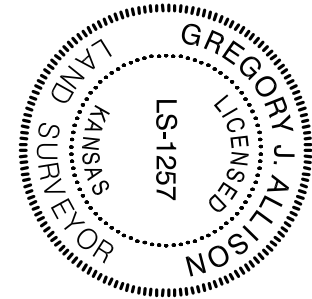
CURVE	LENGTH	RADIUS	DELTA	CHORD	CHD. BEARING
C1	116.451'	500.00'	13°20'40"	116.119'	N05°48'32"E
C2	116.451'	500.00'	13°20'40"	116.119'	N05°48'32"E
C3	252.121'	160.00'	98°17'04"	226.841'	N46°00'21"W

LOTS (inclusive)	BLOCK	ELEVATION NGVD
11-17	2	1350.6

- LEGEND**  
Date of Survey: May, 2007
- △ = Section Corner Monument Found
  - = Found Survey Monument
  - See annotation
  - = Set 3/8" Bar w/ MKEC
  - = Set 3/8" Bar w/ MKEC
  - = Measured
  - (P) = Plotted
  - (D) = Described or record description
  - ⊥ = Section line
  - L1 = Line dimensions in table above
  - CT = Curve dimensions in table above

**BENCH MARK**

BMH#1  
Source: cut on east end of north headwall of RCR 31, located 11 feet north of the center of Sec. 27 T27S, R2E.  
Elev. = 1346.58 NGVD 29



Basis of Bearing: Kansas coordinate system of 1983 south zone grid bearing of N89°08'12"E along the S. Line of SW. 1/4, Sec. 27, T27S, R2E, 6th P.M.