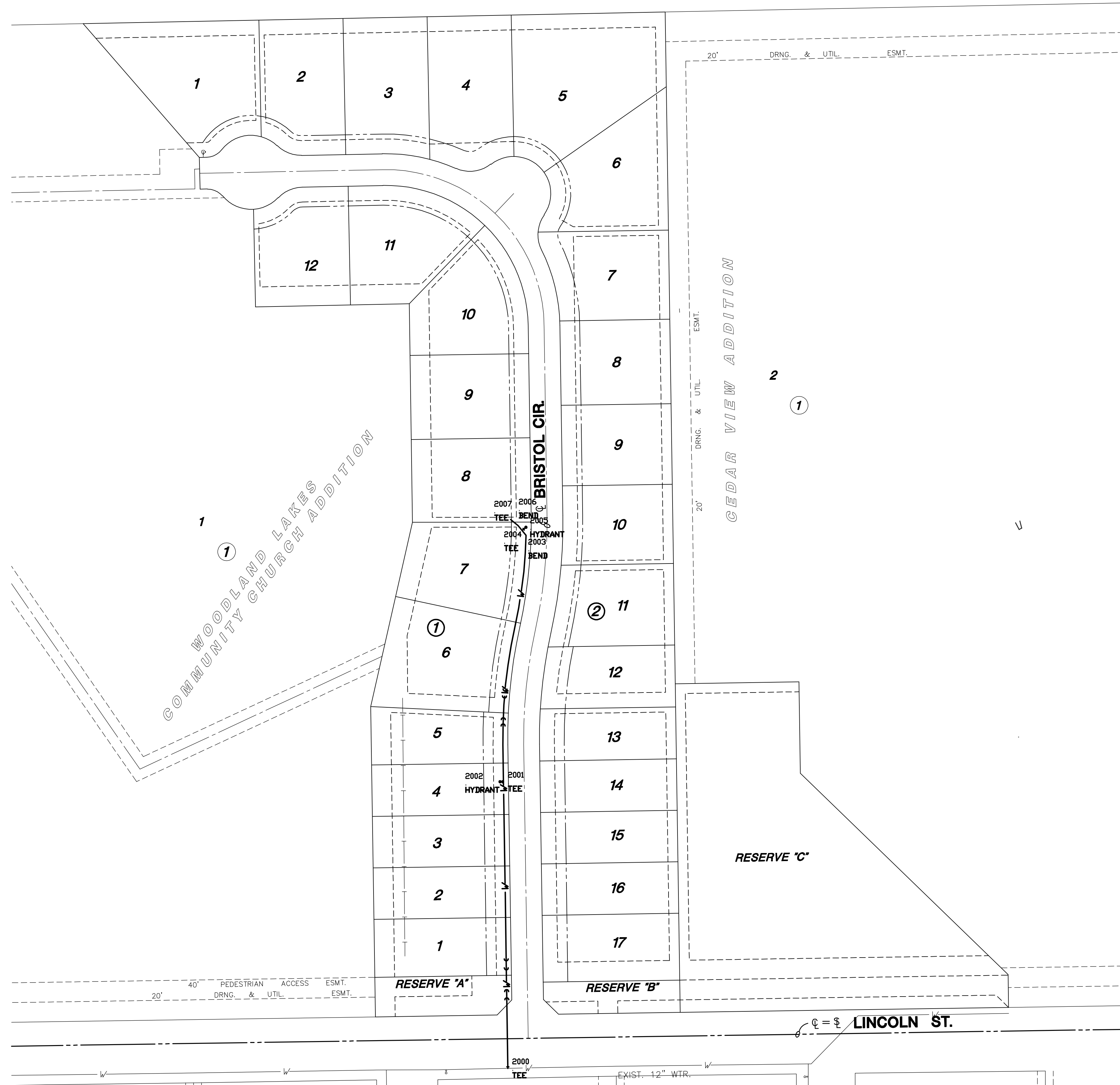


Plat Iron Points			
Point #	Northing	Easting	Description
500	1681531.19	1686820.18	RP
501	1682035.73	1686851.30	PI
502	1681900.56	1686968.85	PI
503	1681868.57	1686969.49	PI
504	1681920.21	1686975.95	RP
505	1681900.71	1686976.35	PI
506	1681868.72	1686976.99	PI
507	1681849.22	1686977.38	RP
508	1681908.37	1686991.45	PI
509	1681861.67	1686992.39	PI
510	1681885.61	1687021.25	RP
511	1681848.18	1687023.58	PI
512	1681749.67	1687025.56	PI
513	1681912.44	1687047.45	PI
514	1681859.85	1687048.50	PI
515	1681937.12	1687071.55	RP
516	1681902.63	1687072.24	PI
517	1681870.64	1687072.88	PI
518	1681836.14	1687073.57	RP
519	1681345.83	1687142.01	PI
520	1681032.27	1687146.73	PI
521	1681904.26	1687153.72	PI
522	1681872.27	1687154.36	PI
523	1681728.30	1687157.24	RP
524	1681752.78	1687180.88	PI
525	1681531.92	1687184.21	PI
526	1681889.32	1687228.29	PI
527	1681920.89	1687242.21	RP
528	1681893.73	1687263.48	PI
529	1681034.12	1687269.72	PI
530	1681307.30	1687280.60	PI
531	1681049.34	1687284.49	PI
532	1681864.20	1687286.60	RP
533	1681426.59	1687292.74	PI
534	1681730.47	1687301.23	PI
535	1681538.49	1687304.12	PI
536	1681307.78	1687312.60	PI
537	1681807.19	1687314.57	PI
538	1681049.83	1687316.49	PI
539	1681842.57	1687317.23	PI
540	1681419.68	1687323.98	PI
541	1681035.05	1687331.71	PI
542	1681730.95	1687333.22	PI
543	1681538.97	1687336.12	PI
544	1681822.66	1687345.41	RP
545	1682047.52	1687349.47	PI
546	1681368.87	1687449.69	PI
547	1681370.75	1687574.68	PI
548	1681278.31	1687576.07	PI
549	1681075.05	1687786.06	PI
550	1681041.91	1687786.56	PI
551	1681315.08	1687796.54	RP
552	1682039.29	1687028.96	LI
553	1681921.73	1687031.31	LI
554	1682040.99	1687113.94	LI
555	1681903.52	1687116.70	LI
556	1681871.56	1687119.13	LI
557	1681751.59	1687121.53	LI
558	1681345.83	1687142.01	LI
559	1681286.77	1687142.90	LI
560	1681234.77	1687143.68	LI
561	1681182.78	1687144.46	LI
562	1681130.78	1687145.25	LI
563	1681072.26	1687146.13	LI
564	1681457.02	1687167.22	LI
565	1681752.78	1687180.88	LI
566	1681700.61	1687181.66	LI
567	1681615.62	1687182.94	LI
568	1681531.92	1687184.21	LI
569	1682042.70	1687198.92	LI
570	1681898.56	1687201.81	LI
571	1681831.89	1687257.26	LI
572	1681288.85	1687280.88	LI
573	1681339.30	1687281.11	LI
574	1681368.85	1687281.66	LI
575	1681184.86	1687282.45	LI
576	1681132.86	1687283.23	LI
577	1682044.40	1687283.91	LI
578	1681074.34	1687284.11	LI
579	1681901.70	1687286.77	LI
580	1681430.04	1687293.49	LI
581	1681702.42	1687301.65	LI
582	1681617.43	1687302.93	LI
583	1681532.16	1687304.17	LI
584	1681825.10	1687311.00	LI
585	1681290.85	1687312.85	LI
586	1681343.36	1687313.37	LI
587	1681238.85	1687313.64	LI
588	1681186.86	1687314.42	LI
589	1681134.86	1687315.20	LI
590	1681067.37	1687316.22	LI
591	1681885.70	1687317.33	LI
592	1681405.98	1687321.16	LI
593	1681735.43	1687333.10	LI
594	1681488.69	1687334.42	LI
595	1681650.21	1687334.44	LI
596	1681568.72	1687335.67	LI
597	1681971.95	1687440.60	LI
598	1681827.99	1687442.79	LI
599	1681737.10	1687444.14	LI
600	1681651.88	1687445.43	LI
601	1681570.39	1687446.66	LI
602	1681490.40	1687447.86	LI
603	1681407.91	1687449.10	LI
604	1681368.87	1687449.69	LI
605	1681345.42	1687450.05	LI
606	1681292.92	1687450.84	LI
607	1681240.93	1687451.62	LI
608	1681188.94	1687452.41	LI
609	1681136.94	1687453.19	LI
610	1681069.45	1687454.21	LI
611	1681036.91	1687454.70	LI



Water Points			
Point #	Northing	Easting	Description
2000	1680980.28	1687280.53	TEE
2001	1681269.91	1687276.16	TEE
2002	1681269.86	1687272.67	HYDRANT
2003	1681518.76	1687299.01	BEND
2004	1681523.72	1687294.94	TEE
2005	1681526.89	1687298.80	HYDRANT
2006	1681528.67	1687290.86	BEND
2007	1681534.88	1687283.27	TEE

MKEC
ENGINEERING
CONSULTANTS, INC.
411 N. WEBB ROAD
WICHITA, K.S. 67206
316-684-9600

**WATER DISTRIBUTION PLANS
CEDAR VIEW VILLAGE**

BUBBLE MAP
SHEET TITLE
06189
PROJECT NUMBER

SRS
DESIGN BY
TKL
DRAWN BY
DFL
CHECKED BY

ISSUED
July 2008
REVISED

SHEET NO.
4 of 11

PLOTED: Wednesday, July 16, 2008 @ 01:26PM

J:\VPDF\CIVIL\COW\CEDAR VIEW VILLAGE\WATER\BND DWGS\06189_BM.DWG