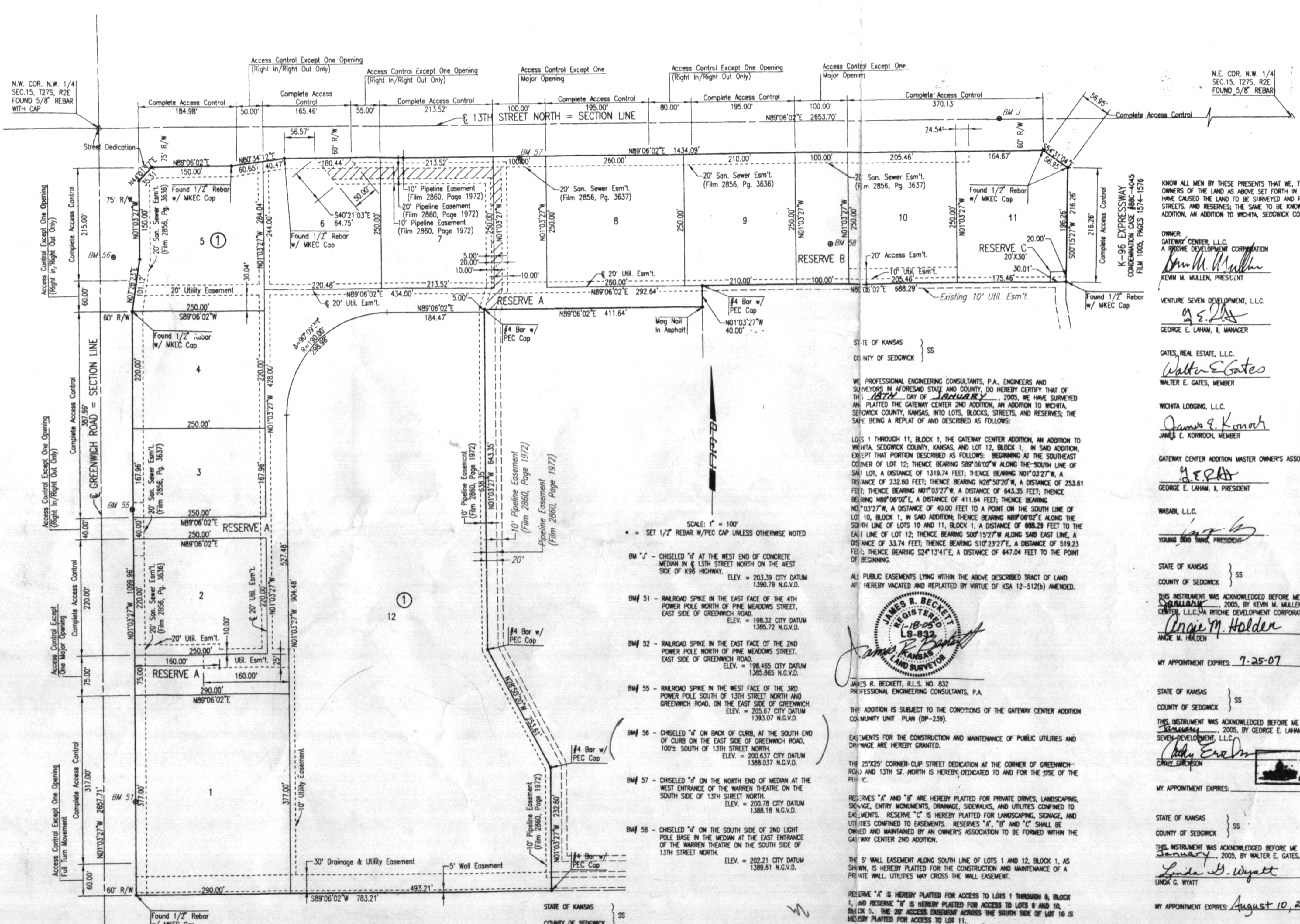


THE GATEWAY CENTER 2ND ADDITION

AN ADDITION TO WICHITA, SEDGWICK COUNTY, KANSAS



N.W. COR. N.W. 1/4 SEC.15, T27S, R2E FOUND 5/8" REBAR WITH CAP

S.W. COR. N.W. 1/4 SEC.15, T27S, R2E FOUND 3/4" IRON PIPE

WE, SECURITY SAVINGS BANK, HOLDER OF A MORTGAGE ON THE ABOVE DESCRIBED PROPERTY, DO HEREBY CONSENT TO THE PLATING OF THE GATEWAY CENTER 2ND ADDITION, AN ADDITION TO SEDGWICK COUNTY, KANSAS.

Matthew G. Catlin
MATTHEW G. CATLIN
Senior Vice President

STATE OF KANSAS }
COUNTY OF SEDGWICK } SS

THIS INSTRUMENT WAS ACKNOWLEDGED BEFORE ME ON THIS 23rd DAY OF February, 2005, BY Brian Chamberlain, SENIOR VICE PRESIDENT OF SECURITY SAVINGS BANK.

Matthew G. Catlin
MATTHEW G. CATLIN
NOTARY PUBLIC

MY APPOINTMENT EXPIRES: 12/27/2006

WE, PROFESSIONAL ENGINEERING CONSULTANTS, P.A., ENGINEERS AND SURVEYORS IN AFORESAID STATE AND COUNTY, DO HEREBY CERTIFY THAT OF THIS 23rd DAY OF January, 2005, WE HAVE SURVEYED AND PLATTED THE GATEWAY CENTER 2ND ADDITION, AN ADDITION TO WICHITA, SEDGWICK COUNTY, KANSAS, INTO LOTS, BLOCKS, STREETS, AND RESERVES, THE SAME BEING A REPLAT OF AND DESCRIBED AS FOLLOWS:

LOTS 1 THROUGH 11, BLOCK 1, THE GATEWAY CENTER ADDITION, AN ADDITION TO WICHITA, SEDGWICK COUNTY, KANSAS, AND LOT 12, BLOCK 1, IN SAID ADDITION, EXCEPT THAT PORTION DESCRIBED AS FOLLOWS: BEGINNING AT THE SOUTHEAST CORNER OF LOT 12; THENCE BEARING S89°08'02"W ALONG THE SOUTH LINE OF SAID LOT, A DISTANCE OF 1319.74 FEET; THENCE BEARING N01°03'27"W, A DISTANCE OF 232.80 FEET; THENCE BEARING N28°50'20"W, A DISTANCE OF 253.61 FEET; THENCE BEARING N01°03'27"W, A DISTANCE OF 643.35 FEET; THENCE BEARING N89°08'02"E, A DISTANCE OF 411.64 FEET; THENCE BEARING N01°03'27"W, A DISTANCE OF 40.00 FEET TO A POINT ON THE SOUTH LINE OF LOT 10, BLOCK 1, IN SAID ADDITION; THENCE BEARING N89°08'02"E ALONG THE SOUTH LINE OF LOTS 10 AND 11, BLOCK 1, A DISTANCE OF 688.29 FEET TO THE EAST LINE OF LOT 12; THENCE BEARING S01°15'27"W ALONG SAID EAST LINE, A DISTANCE OF 33.74 FEET; THENCE BEARING S10°23'27"E, A DISTANCE OF 519.23 FEET; THENCE BEARING S24°13'41"E, A DISTANCE OF 647.04 FEET TO THE POINT OF BEGINNING.

ALL PUBLIC EASEMENTS LYING WITHIN THE ABOVE DESCRIBED TRACT OF LAND ARE HEREBY VACATED AND REPLATED BY WRITTE OF KSA 12-512(b) AMENDED.

STATE OF KANSAS }
COUNTY OF SEDGWICK } SS

WE, JAMES R. BECKETT, R.L.S. NO. 832 PROFESSIONAL ENGINEERING CONSULTANTS, P.A.

THIS ADDITION IS SUBJECT TO THE CONDITIONS OF THE GATEWAY CENTER ADDITION COMMUNITY UNIT PLAN (CP-239).

EASEMENTS FOR THE CONSTRUCTION AND MAINTENANCE OF PUBLIC UTILITIES AND DRAINAGE ARE HEREBY GRANTED.

THE 25'X25' CORNER CLIP STREET DEDICATION AT THE CORNER OF GREENWICH ROAD AND 13TH ST. NORTH IS HEREBY DEDICATED TO AND FOR THE USE OF THE PUBLIC.

RESERVES "A" AND "B" ARE HEREBY PLATTED FOR PRIVATE DRIVES, LANDSCAPING, SIGNAGE, ENTRY MONUMENTS, DRAINAGE, SIDEWALKS, AND UTILITIES CONFINED TO EASEMENTS. RESERVE "C" IS HEREBY PLATTED FOR LANDSCAPING, SIGNAGE, AND UTILITIES CONFINED TO EASEMENTS. RESERVES "A", "B" AND "C" SHALL BE OWNED AND MAINTAINED BY AN OWNER'S ASSOCIATION TO BE FORMED WITHIN THE GATEWAY CENTER 2ND ADDITION.

THE 5' WALL EASEMENT ALONG SOUTH LINE OF LOTS 1 AND 12, BLOCK 1, AS SHOWN, IS HEREBY PLATTED FOR THE CONSTRUCTION AND MAINTENANCE OF A PRIVATE WALL. UTILITIES MAY CROSS THE WALL EASEMENT.

RESERVE "A" IS HEREBY PLATTED FOR ACCESS TO LOTS 1 THROUGH 8, BLOCK 1, AND RESERVE "B" IS HEREBY PLATTED FOR ACCESS TO LOTS 9 AND 10, BLOCK 1. THE 20' ACCESS EASEMENT ACROSS THE SOUTHWEST CORNER OF LOT 10 IS HEREBY PLATTED FOR ACCESS TO LOT 11.

ALL ADJUTERS RIGHT OF ACCESS TO AND FROM 13TH ST. NORTH OVER AND ACROSS THE NORTH PROPERTY LINE AND TO AND FROM GREENWICH ROAD OVER AND ACROSS THE WEST PROPERTY LINE IS HEREBY GRANTED TO THE CITY OF WICHITA. PROVIDED HOWEVER THAT THERE SHALL BE ACCESS TO 13TH STREET NORTH AT FIVE LOCATIONS AS SHOWN, AND ACCESS TO GREENWICH ROAD AT FOUR LOCATIONS AS SHOWN.

A LANDSCAPE PLAN HAS BEEN APPROVED FOR THIS PLAT. ALL DRAINAGE EASEMENTS AND RIGHTS-OF-WAY SHALL REMAIN AT ESTABLISHED GRADES AND UNOBTSTRUCTED TO ALLOW FOR THE CONVEYANCE OF STORM WATER, UNLESS MODIFIED WITH THE APPROVAL OF THE CITY ENGINEER.

SCALE: 1" = 100'

• = SET 1/2" REBAR W/PEC CAP UNLESS OTHERWISE NOTED

BM 1 - CHISELED "I" AT THE WEST END OF CONCRETE MEDIAN IN 13TH STREET NORTH ON THE WEST SIDE OF K98 HIGHWAY. ELEV. = 203.39 CITY DATUM 1390.79 N.G.V.D.

BM 51 - RAILROAD SPIKE IN THE EAST FACE OF THE 4TH POWER POLE NORTH OF PINE MEADOWS STREET, EAST SIDE OF GREENWICH ROAD. ELEV. = 198.32 CITY DATUM 1385.72 N.G.V.D.

BM 52 - RAILROAD SPIKE IN THE EAST FACE OF THE 2ND POWER POLE NORTH OF PINE MEADOWS STREET, EAST SIDE OF GREENWICH ROAD. ELEV. = 198.485 CITY DATUM 1385.865 N.G.V.D.

BM 55 - RAILROAD SPIKE IN THE WEST FACE OF THE 3RD POWER POLE SOUTH OF 13TH STREET NORTH AND GREENWICH ROAD, ON THE EAST SIDE OF GREENWICH ROAD. ELEV. = 205.87 CITY DATUM 1388.037 N.G.V.D.

BM 56 - CHISELED "I" ON BACK OF CURB, AT THE SOUTH END OF CURB ON THE EAST SIDE OF GREENWICH ROAD, 100% SOUTH OF 13TH STREET NORTH. ELEV. = 200.637 CITY DATUM 1388.037 N.G.V.D.

BM 57 - CHISELED "I" ON THE NORTH END OF MEDIAN AT THE WEST ENTRANCE OF THE WARREN THEATRE ON THE SOUTH SIDE OF 13TH STREET NORTH. ELEV. = 200.78 CITY DATUM 1388.18 N.G.V.D.

BM 58 - CHISELED "I" ON THE SOUTH SIDE OF 2ND LIGHT POLE BASE IN THE MEDIAN AT THE EAST ENTRANCE OF THE WARREN THEATRE ON THE SOUTH SIDE OF 13TH STREET NORTH. ELEV. = 202.21 CITY DATUM 1389.61 N.G.V.D.

STATE OF KANSAS }
COUNTY OF SEDGWICK } SS

THIS INSTRUMENT WAS ACKNOWLEDGED BEFORE ME ON THIS 1st DAY OF February, 2005, BY James E. Korroch, MEMBER OF WICHITA LODGING, L.L.C.

Sue M. Christians
SUE M. CHRISTIANS
NOTARY PUBLIC

MY APPOINTMENT EXPIRES: 11/5/06

STATE OF KANSAS }
COUNTY OF SEDGWICK } SS

THIS INSTRUMENT WAS ACKNOWLEDGED BEFORE ME ON THIS 24th DAY OF February, 2005, BY George E. Laham, II, PRESIDENT OF GATEWAY CENTER ADDITION MASTER OWNERS ASSOCIATION.

George E. Laham, II
GEORGE E. LAHAM, II
NOTARY PUBLIC

MY APPOINTMENT EXPIRES: _____

STATE OF KANSAS }
COUNTY OF SEDGWICK } SS

THIS INSTRUMENT WAS ACKNOWLEDGED BEFORE ME ON THIS 15th DAY OF February, 2005, BY Youngsoo Yama, PRESIDENT OF WASHBI, L.L.C.

Youngsoo Yama
YOUNG SOO YAMA
NOTARY PUBLIC

MY APPOINTMENT EXPIRES: _____

WE, EQUITY BANK, N.A., HOLDER OF A MORTGAGE ON THE ABOVE DESCRIBED PROPERTY, DO HEREBY CONSENT TO THE PLATING OF THE GATEWAY CENTER 2ND ADDITION, AN ADDITION TO SEDGWICK COUNTY, KANSAS.

Michael B. Burch
MICHAEL B. BURCH, PRESIDENT - WICHITA

STATE OF KANSAS }
COUNTY OF SEDGWICK } SS

THIS INSTRUMENT WAS ACKNOWLEDGED BEFORE ME ON THIS 22nd DAY OF February, 2005, BY Michael B. Burch, PRESIDENT - WICHITA OF EQUITY BANK, N.A.

Tania Lewis
TANIA LEWIS
NOTARY PUBLIC

MY APPOINTMENT EXPIRES: June 9, 2007

STATE OF KANSAS }
COUNTY OF SEDGWICK } SS

THIS INSTRUMENT WAS ACKNOWLEDGED BEFORE ME ON THIS 26th DAY OF January, 2005, BY Kevin M. Malen, PRESIDENT OF GATEWAY CENTER, L.L.C. A RITCHE DEVELOPMENT CORPORATION.

Kevin M. Malen
KEVIN M. MALLEN, PRESIDENT

STATE OF KANSAS }
COUNTY OF SEDGWICK } SS

THIS INSTRUMENT WAS ACKNOWLEDGED BEFORE ME ON THIS 26th DAY OF January, 2005, BY Walter E. Gates, MEMBER OF GATES REAL ESTATE, L.L.C.

Walter E. Gates
WALTER E. GATES, MEMBER

STATE OF KANSAS }
COUNTY OF SEDGWICK } SS

THIS INSTRUMENT WAS ACKNOWLEDGED BEFORE ME ON THIS 26th DAY OF January, 2005, BY James E. Korroch, MEMBER OF WICHITA LODGING, L.L.C.

James E. Korroch
JAMES E. KORROCH, MEMBER

GATEWAY CENTER ADDITION MASTER OWNERS ASSOCIATION

George E. Laham, II
GEORGE E. LAHAM, II, PRESIDENT

WASABI, L.L.C.

Youngsoo Yama
YOUNG SOO YAMA, PRESIDENT

STATE OF KANSAS }
COUNTY OF SEDGWICK } SS

THIS INSTRUMENT WAS ACKNOWLEDGED BEFORE ME ON THIS 26th DAY OF January, 2005, BY Tricia L. Robello, DEPUTY COUNTY SURVEYOR SEDGWICK COUNTY KANSAS.

Tricia L. Robello
TRICIA L. ROBELLO, DEPUTY COUNTY SURVEYOR SEDGWICK COUNTY KANSAS

REVIEWED IN ACCORDANCE WITH K.S.A. 58-2005 ON THIS 7th DAY OF November, 2005.

Tricia L. Robello
TRICIA L. ROBELLO, LS 11246
DEPUTY COUNTY SURVEYOR SEDGWICK COUNTY KANSAS

THIS PLAT IS APPROVED AND ALL DEDICATIONS SHOWN HEREON, IF ANY ARE ACCEPTED BY THE CITY COUNCIL OF THE CITY OF WICHITA, KANSAS, THIS DAY OF February, 2005.

Charles Hawkins
CHARLES HAWKINS
MAYOR

Karen Sublett
KAREN SUBLETT
CITY CLERK

ENTERED ON TRANSFER RECORD THIS 11th DAY OF April, 2005.

Don Bruce
DON BRUCE
COUNTY CLERK

STATE OF KANSAS }
COUNTY OF SEDGWICK } SS

THIS INSTRUMENT WAS ACKNOWLEDGED BEFORE ME ON THIS 26th DAY OF January, 2005, BY Linda G. Wyatt, NOTARY PUBLIC STATE OF KANSAS.

Linda G. Wyatt
LINDA G. WYATT
NOTARY PUBLIC - STATE OF KANSAS

MY APPOINTMENT EXPIRES: August 10, 2007

STATE OF KANSAS }
COUNTY OF SEDGWICK } SS

THIS INSTRUMENT WAS ACKNOWLEDGED BEFORE ME ON THIS 1st DAY OF February, 2005, BY Sue M. Christians, REGISTER OF DEEDS.

Sue M. Christians
SUE M. CHRISTIANS
REGISTER OF DEEDS

THIS IS TO CERTIFY THAT THIS INSTRUMENT WAS FILED FOR RECORD BY THE REGISTER OF DEEDS OFFICE AT 11:06:22 A.M. ON THE 13th DAY OF February, 2005.

Bill Meek
BILL MECK
DEPUTY REGISTER OF DEEDS

STATE OF KANSAS }
COUNTY OF SEDGWICK } SS

THIS INSTRUMENT WAS ACKNOWLEDGED BEFORE ME ON THIS 1st DAY OF February, 2005, BY James E. Korroch, MEMBER OF WICHITA LODGING, L.L.C.

James E. Korroch
JAMES E. KORROCH, MEMBER OF WICHITA LODGING, L.L.C.

STATE OF KANSAS }
COUNTY OF SEDGWICK } SS

THIS INSTRUMENT WAS ACKNOWLEDGED BEFORE ME ON THIS 1st DAY OF February, 2005, BY James E. Korroch, MEMBER OF WICHITA LODGING, L.L.C.

James E. Korroch
JAMES E. KORROCH, MEMBER OF WICHITA LODGING, L.L.C.

STATE OF KANSAS }
COUNTY OF SEDGWICK } SS

THIS INSTRUMENT WAS ACKNOWLEDGED BEFORE ME ON THIS 24th DAY OF February, 2005, BY George E. Laham, II, PRESIDENT OF GATEWAY CENTER ADDITION MASTER OWNERS ASSOCIATION.

George E. Laham, II
GEORGE E. LAHAM, II
NOTARY PUBLIC

MY APPOINTMENT EXPIRES: _____

STATE OF KANSAS }
COUNTY OF SEDGWICK } SS

THIS INSTRUMENT WAS ACKNOWLEDGED BEFORE ME ON THIS 15th DAY OF February, 2005, BY Youngsoo Yama, PRESIDENT OF WASHBI, L.L.C.

Youngsoo Yama
YOUNG SOO YAMA
NOTARY PUBLIC

MY APPOINTMENT EXPIRES: _____

WE, EQUITY BANK, N.A., HOLDER OF A MORTGAGE ON THE ABOVE DESCRIBED PROPERTY, DO HEREBY CONSENT TO THE PLATING OF THE GATEWAY CENTER 2ND ADDITION, AN ADDITION TO SEDGWICK COUNTY, KANSAS.

Michael B. Burch
MICHAEL B. BURCH, PRESIDENT - WICHITA

STATE OF KANSAS }
COUNTY OF SEDGWICK } SS

THIS INSTRUMENT WAS ACKNOWLEDGED BEFORE ME ON THIS 22nd DAY OF February, 2005, BY Michael B. Burch, PRESIDENT - WICHITA OF EQUITY BANK, N.A.

Tania Lewis
TANIA LEWIS
NOTARY PUBLIC

MY APPOINTMENT EXPIRES: June 9, 2007

STATE OF KANSAS }
COUNTY OF SEDGWICK } SS

THIS INSTRUMENT WAS ACKNOWLEDGED BEFORE ME ON THIS 26th DAY OF January, 2005, BY Kevin M. Malen, PRESIDENT OF GATEWAY CENTER, L.L.C. A RITCHE DEVELOPMENT CORPORATION.

Kevin M. Malen
KEVIN M. MALLEN, PRESIDENT

STATE OF KANSAS }
COUNTY OF SEDGWICK } SS

THIS INSTRUMENT WAS ACKNOWLEDGED BEFORE ME ON THIS 26th DAY OF January, 2005, BY Walter E. Gates, MEMBER OF GATES REAL ESTATE, L.L.C.

Walter E. Gates
WALTER E. GATES, MEMBER

STATE OF KANSAS }
COUNTY OF SEDGWICK } SS

THIS INSTRUMENT WAS ACKNOWLEDGED BEFORE ME ON THIS 26th DAY OF January, 2005, BY James E. Korroch, MEMBER OF WICHITA LODGING, L.L.C.

James E. Korroch
JAMES E. KORROCH, MEMBER

GATEWAY CENTER ADDITION MASTER OWNERS ASSOCIATION

George E. Laham, II
GEORGE E. LAHAM, II, PRESIDENT

WASABI, L.L.C.

Youngsoo Yama
YOUNG SOO YAMA, PRESIDENT

STATE OF KANSAS }
COUNTY OF SEDGWICK } SS

THIS INSTRUMENT WAS ACKNOWLEDGED BEFORE ME ON THIS 26th DAY OF January, 2005, BY Tricia L. Robello, DEPUTY COUNTY SURVEYOR SEDGWICK COUNTY KANSAS.

Tricia L. Robello
TRICIA L. ROBELLO, LS 11246
DEPUTY COUNTY SURVEYOR SEDGWICK COUNTY KANSAS

REVIEWED IN ACCORDANCE WITH K.S.A. 58-2005 ON THIS 7th DAY OF November, 2005.

Tricia L. Robello
TRICIA L. ROBELLO, LS 11246
DEPUTY COUNTY SURVEYOR SEDGWICK COUNTY KANSAS

THIS PLAT IS APPROVED AND ALL DEDICATIONS SHOWN HEREON, IF ANY ARE ACCEPTED BY THE CITY COUNCIL OF THE CITY OF WICHITA, KANSAS, THIS DAY OF February, 2005.

Charles Hawkins
CHARLES HAWKINS
MAYOR

Karen Sublett
KAREN SUBLETT
CITY CLERK

ENTERED ON TRANSFER RECORD THIS 11th DAY OF April, 2005.

Don Bruce
DON BRUCE
COUNTY CLERK

STATE OF KANSAS }
COUNTY OF SEDGWICK } SS

THIS INSTRUMENT WAS ACKNOWLEDGED BEFORE ME ON THIS 26th DAY OF January, 2005, BY Linda G. Wyatt, NOTARY PUBLIC STATE OF KANSAS.

Linda G. Wyatt
LINDA G. WYATT
NOTARY PUBLIC - STATE OF KANSAS

MY APPOINTMENT EXPIRES: August 10, 2007

STATE OF KANSAS }
COUNTY OF SEDGWICK } SS

THIS INSTRUMENT WAS ACKNOWLEDGED BEFORE ME ON THIS 1st DAY OF February, 2005, BY Sue M. Christians, REGISTER OF DEEDS.

Sue M. Christians
SUE M. CHRISTIANS
REGISTER OF DEEDS

THIS IS TO CERTIFY THAT THIS INSTRUMENT WAS FILED FOR RECORD BY THE REGISTER OF DEEDS OFFICE AT 11:06:22 A.M. ON THE 13th DAY OF February, 2005.

Bill Meek
BILL MECK
DEPUTY REGISTER OF DEEDS

STATE OF KANSAS }
COUNTY OF SEDGWICK } SS

THIS INSTRUMENT WAS ACKNOWLEDGED BEFORE ME ON THIS 1st DAY OF February, 2005, BY James E. Korroch, MEMBER OF WICHITA LODGING, L.L.C.

James E. Korroch
JAMES E. KORROCH, MEMBER OF WICHITA LODGING, L.L.C.

STATE OF KANSAS }
COUNTY OF SEDGWICK } SS

THIS INSTRUMENT WAS ACKNOWLEDGED BEFORE ME ON THIS 1st DAY OF February, 2005, BY James E. Korroch, MEMBER OF WICHITA LODGING, L.L.C.

James E. Korroch
JAMES E. KORROCH, MEMBER OF WICHITA LODGING, L.L.C.