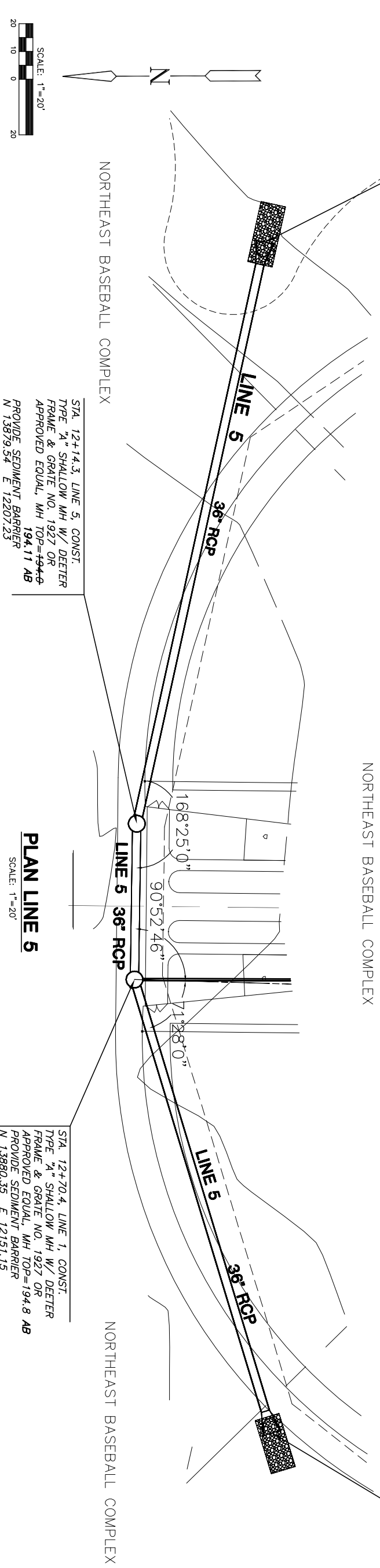
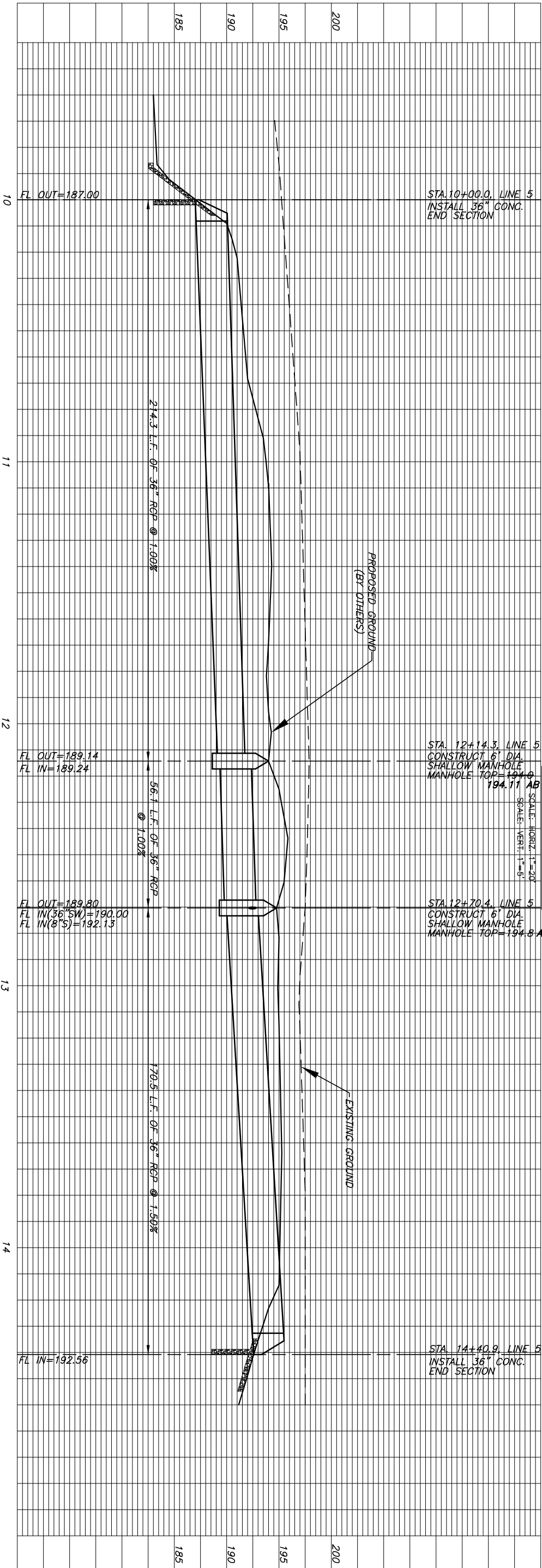


STA. 10+00.0, LINE 5, INSTALL 36" END SECTION W/ 20 S.Y. OF LIGHTSTONE RIP RAP W/ GROUTED TOE WALL  
N 13833.49 E 12416.51



PROFILE LINE 5



AS-BUILT AUGUST 2008

STORM WATER SEWER  
**NORTHEAST BASEBALL COMPLEX**  
 PHASE 1

**MKREC**  
 ENGINEERING  
 CONSULTANTS, INC.  
 411 N. WEBB ROAD  
 WICHITA, KS 67209  
 316-684-9600

**LINE 5**  
 SHEET TITLE  
 1853PPS  
 PROJECT NUMBER

DESIGN BY: JTC  
 DRAWN BY: DDC  
 CHECKED BY: GJA

ISSUED  
 August 2008  
 REVISED

SHEET NO.  
**14 of 17**