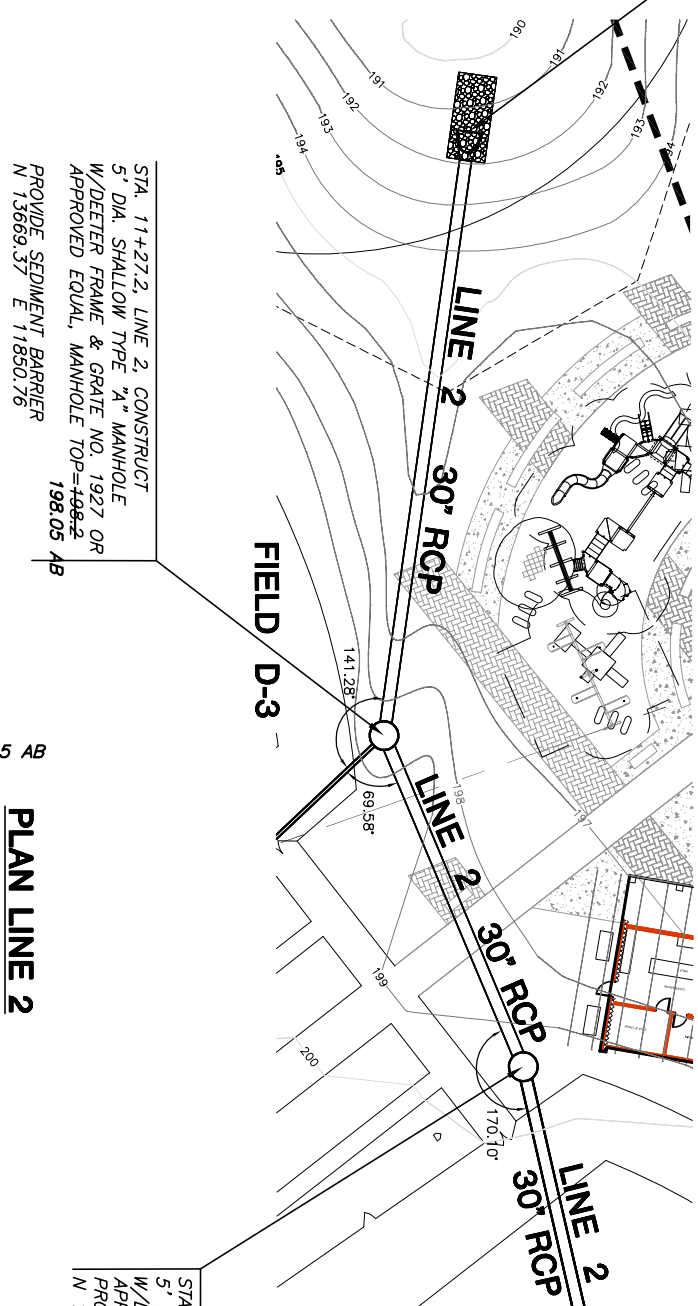
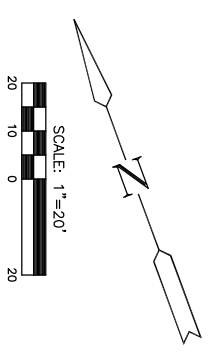


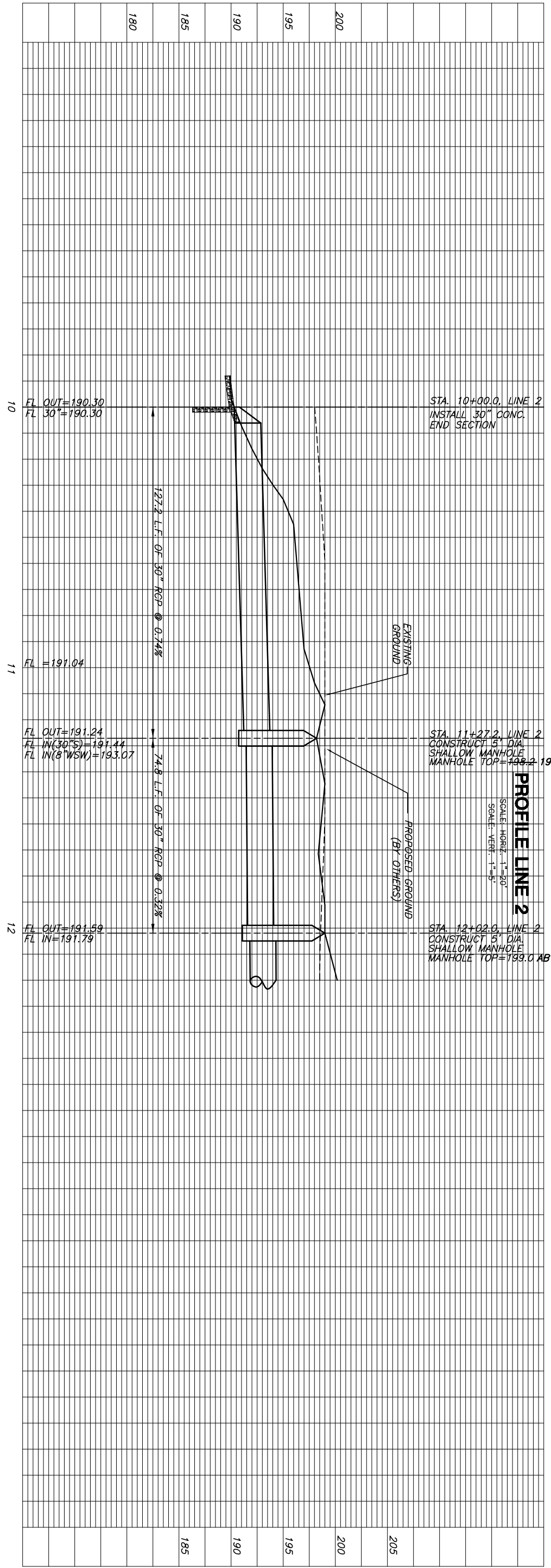
STA. 10+00.0, LINE 2, INSTALL 30" END SECTION W/ 18 S.Y. OF LIGHTSTONE RIP RAP W/ GROUTED TOE WALL  
N 13781.44 E 11910.50



STA. 11+27.2, LINE 2, CONSTRUCT 5' DIA. SHALLOW TYPE "A" MANHOLE W/DETER FRAME & GRATE NO. 1927 OR APPROVED EQUAL, MANHOLE TOP=199.2  
PROVIDE SEDIMENT BARRIER  
N 13669.37 E 11850.76  
198.05 AB

STA. 12+02.0, LINE 2, CONSTRUCT 5' DIA. SHALLOW TYPE "A" MANHOLE W/DETER FRAME & GRATE NO. 1927 OR APPROVED EQUAL, MANHOLE TOP=199.0  
PROVIDE SEDIMENT BARRIER  
N 13594.65 E 11854.42

**PLAN LINE 2**  
SCALE: 1"=20'



STA. 10+00.0, LINE 2  
INSTALL 30" CONC. END SECTION

STA. 11+27.2, LINE 2  
CONSTRUCT 5' DIA. SHALLOW MANHOLE  
MANHOLE TOP=199.2

STA. 12+02.0, LINE 2  
CONSTRUCT 5' DIA. SHALLOW MANHOLE  
MANHOLE TOP=199.0

**PROFILE LINE 2**  
SCALE: HORIZ. 1"=20'  
SCALE: VERT. 1"=5'

AS-BUILT AUGUST 2008

J:\CIVIL\064103\_INE BASE\BML\ch\SW\SW\CON\AS-BUILT\064103\064103.dwg

**STORM WATER SEWER**  
**NORTHEAST BASEBALL COMPLEX**  
**PHASE 1**

**MKREC**  
ENGINEERING  
CONSULTANTS, INC.  
411 N. WEBB ROAD  
WICHITA, KS 67208  
316-684-9600

SHEET TITLE  
**LINE 2**  
PROJECT NUMBER  
1853PPS

DESIGN BY  
JTC  
DRAWN BY  
DDG  
CHECKED BY  
GJA

ISSUED  
August 2008  
REVISED

SHEET NO.  
**7 of 17**