

STA. 20+56.6, LINE 2, 4' DIA. SHALLOW TYPE "A" MANHOLE W/DEETER FRAME & GRATE NO. 1927 OR APPROVED EQUAL MANHOLE TOP=198.5-198.39 AB PROVIDE SEDIMENT BARRIER N 12879.79 E 11850.81

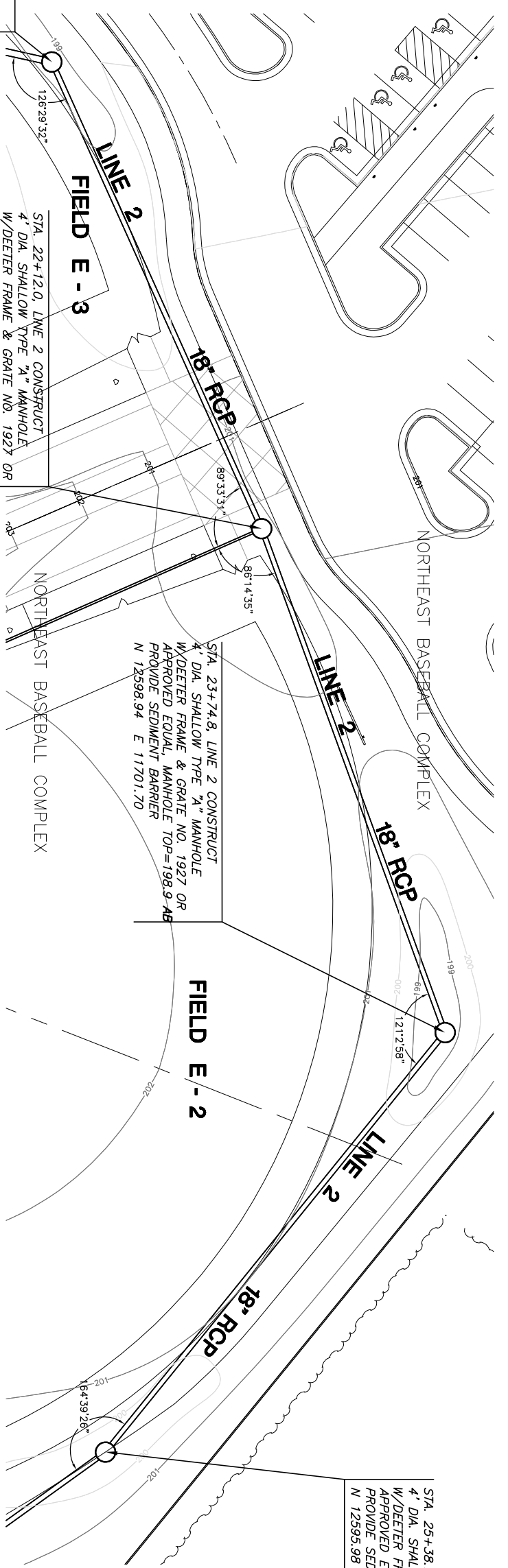
STA. 22+12.0, LINE 2 CONSTRUCT 4' DIA. SHALLOW TYPE "A" MANHOLE W/DEETER FRAME & GRATE NO. 1927 OR APPROVED EQUAL, MANHOLE TOP=200.3-200.19 AB PROVIDE SEDIMENT BARRIER N 12739.94 E 11783.15

STA. 23+74.8, LINE 2 CONSTRUCT 4' DIA. SHALLOW TYPE "A" MANHOLE W/DEETER FRAME & GRATE NO. 1927 OR APPROVED EQUAL, MANHOLE TOP=198.9 AB PROVIDE SEDIMENT BARRIER N 12598.94 E 11701.70

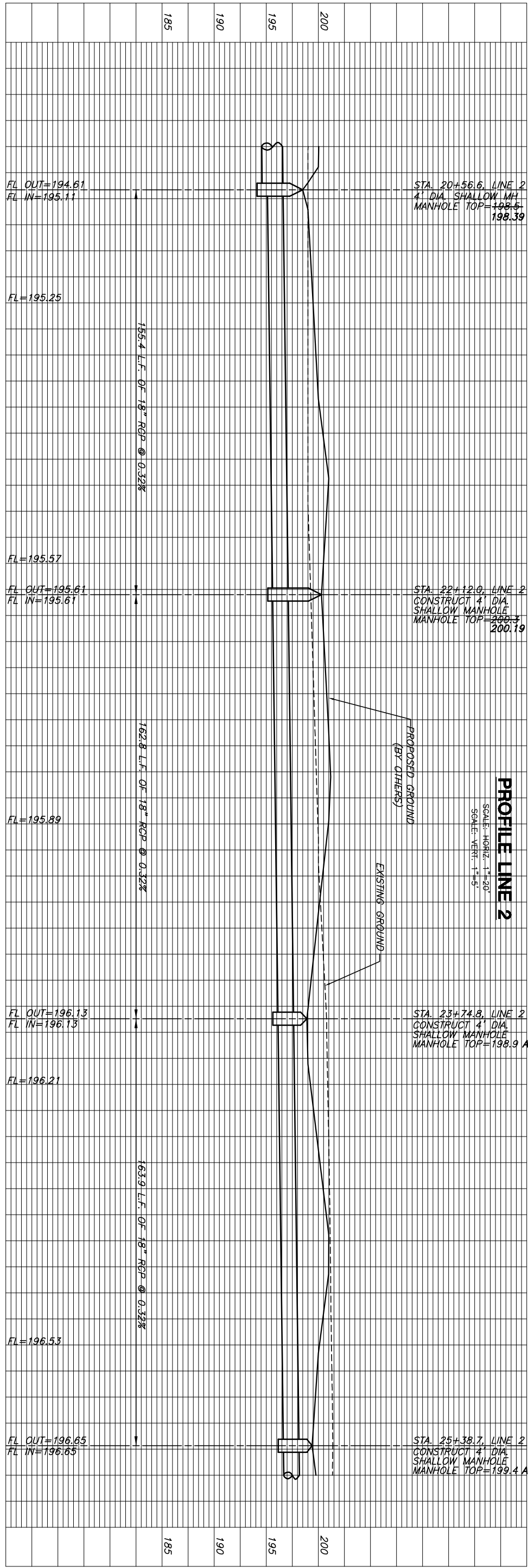
STA. 25+38.7, LINE 2 CONSTRUCT 4' DIA. SHALLOW TYPE "A" MANHOLE W/DEETER FRAME & GRATE NO. 1927 OR APPROVED EQUAL, MANHOLE TOP=199.4 AB PROVIDE SEDIMENT BARRIER N 12595.98 E 11537.90

**PLAN LINE 2**  
SCALE: 1"=20'

AS-BUILT AUGUST 2008



**PROFILE LINE 2**  
SCALE: HORIZ. 1"=20'  
SCALE: VERT. 1"=5'



J:\CIVIL\0804103\_LINE AS-BUILT\DWG\SWSS\LINE2\AS-BUILT\DWG\08030203\MAJ.DWG

**STORM WATER SEWER**  
**NORTHEAST BASEBALL COMPLEX**  
**PHASE 1**

**MKREC**  
ENGINEERING  
CONSULTANTS, INC.  
411 N. WEBB ROAD  
WICHITA, KS 67206  
316-684-9600

SHEET TITLE  
**LINE 2**  
PROJECT NUMBER  
1853PPS

DESIGN BY  
JTC  
DRAWN BY  
DGC  
CHECKED BY  
GJA

ISSUED  
August 2008  
REVISED

SHEET NO.  
**10 of 17**