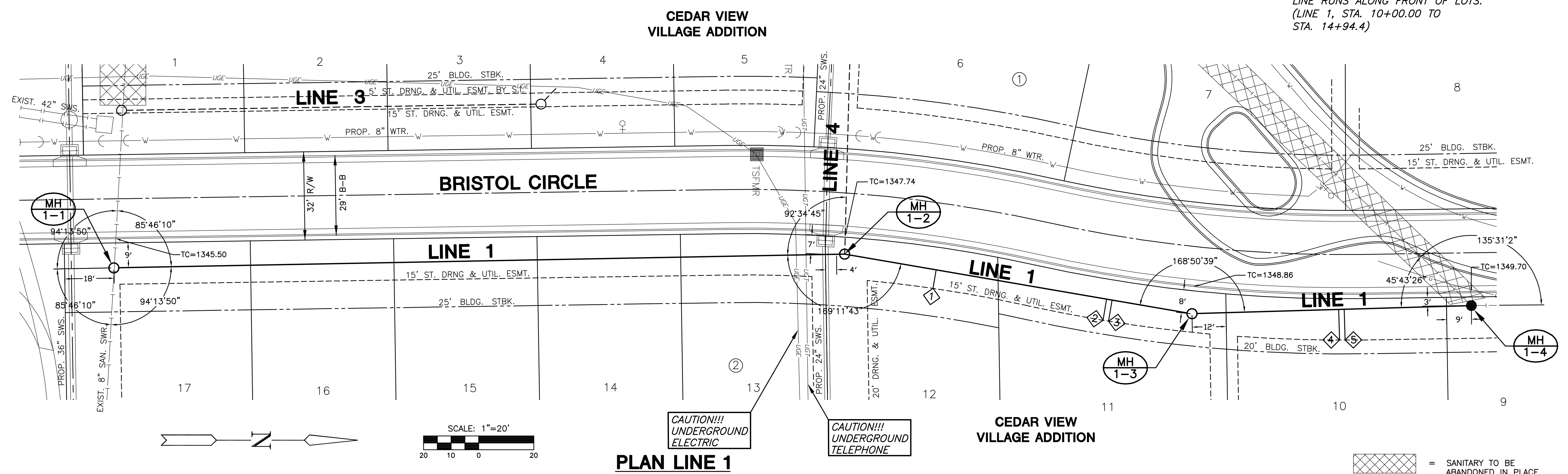
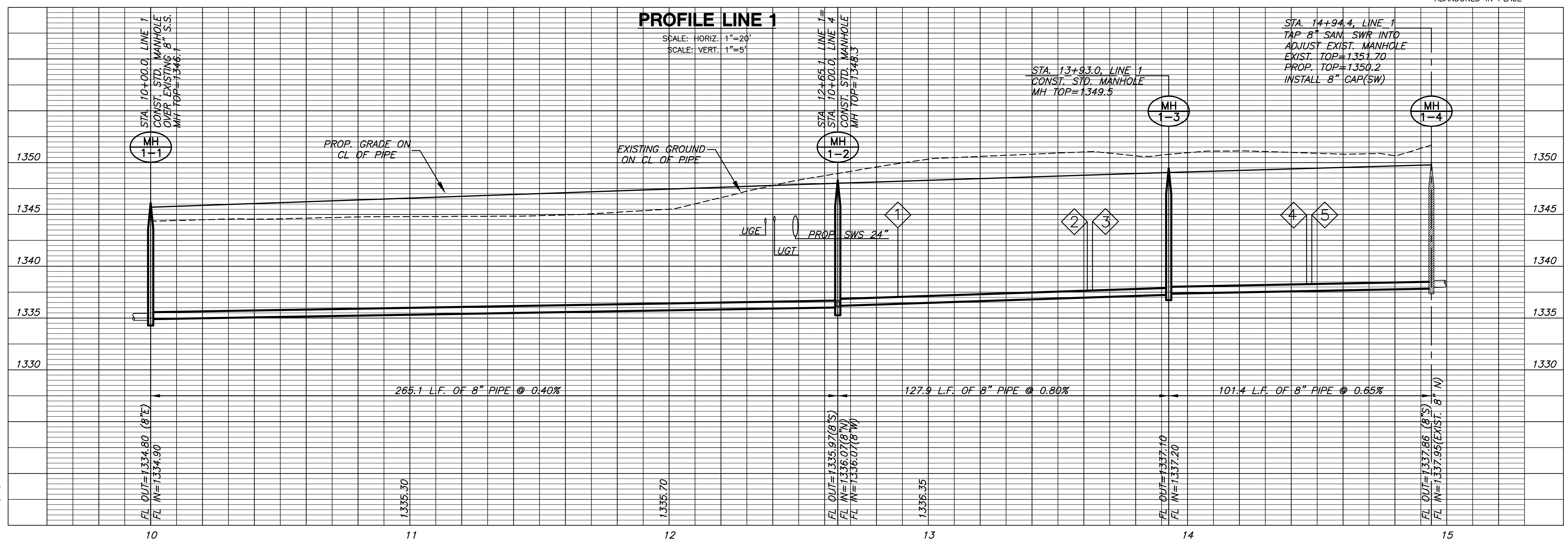


SANITARY SEWER PLANS
CEDAR VIEW VILLAGE
PHASE 1

TRENCHES TO BE BACKFILLED WITH SAND AND FLUSHED WHEN SEWER LINE RUNS ALONG FRONT OF LOTS. (LINE 1, STA. 10+00.00 TO STA. 14+94.4)



= SANITARY TO BE ABANDONED IN PLACE



PLOTED: Wednesday, July 16, 2008 @ 09:03AM

J:\CIVIL\06189\WORK\SAN\06189_B1.DWG

LINE 1
SHEET TITLE
06189
PROJECT NUMBER

SRS
DESIGN BY
TKL
DRAWN BY
MAB
CHECKED BY

ISSUED
July 2008
REVISED

SHEET NO.
4 of 16