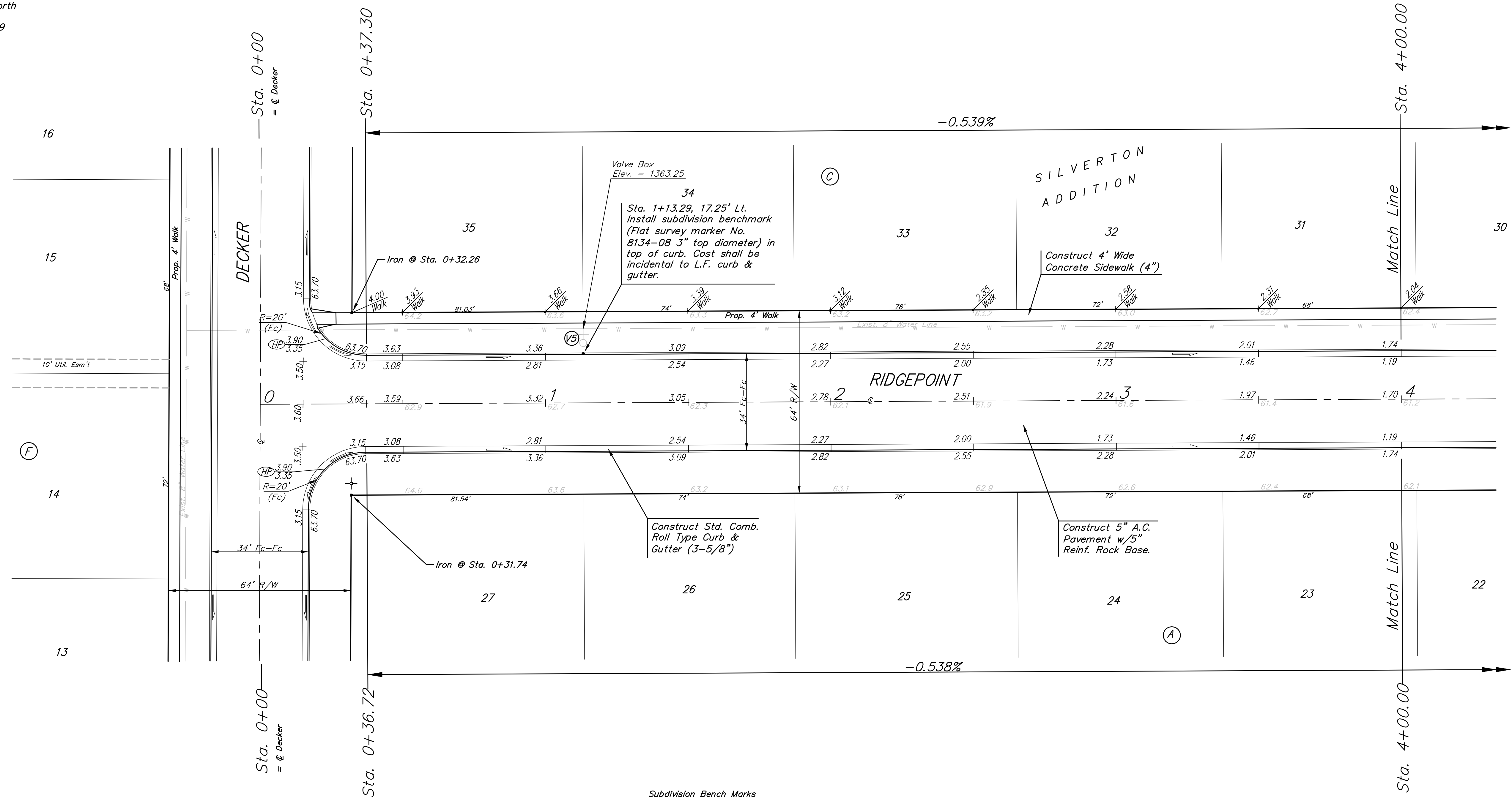


BENCHMARKS:
 Cross Cut In North End of Concrete Valley Gutter, Nickelton & Nickelton Ct., Adjacent to SW Cor. Lot 6, Block C, Silverton Addition.
 Elev. = 1361.49 NGVD 29

Cross Cut In Concrete, E of Curb In Front of Catch Basin, Adjacent to SW Cor. Lot 6, Block B, Silverton Addition.
 Elev. = 1360.34 NGVD 29

"□" Cut In SW Cor of Curb Inlet Top, Adjacent to NE Cor Lot 6, Block B, Copper Gate North Addition.
 Elev. = 1361.77 NGVD 29

Scale: 1" = 20'
 • = Iron



Subdivision Bench Marks		
Street & Station	Location Description	Elevation
Decker 2+32.70, 17.25' Lt.	Adjacent to Fire Hydrant near lots 1 & 2, Block F.	
Ridgepoint 1+13.29, 17.25' Lt.	Adjacent to Fire Hydrant near lots 34 & 35, Block C.	
Ridgepoint 6+36.47, 17.25' Lt.	Adjacent to Fire Hydrant along south side of Res. "B"	
Decker Ct. 2+67.79, 17.25' Lt.	Adjacent to Fire Hydrant near lots 30 & 31, Block A.	
Westport Ct. 2+25.21 14.25' Lt.	Adjacent to Fire Hydrant near lots 45 & 46, Block C.	

NOTE: ROLL TYPE CURB & GUTTER TO BE CONSTRUCTED ON THE PAVEMENT SHOWN ON THIS SHEET. TOP OF CURB ELEVATIONS ARE GIVEN FOR FULL HEIGHT CURB.

	Silverton Addition - Phase II RIDGEPOINT STA. 0+00 TO STA. 4+00.00	
	<small>Baughman Company, P.A. 315 Ellis St. Wichita, KS 67211 P 316-262-7271 F 316-262-0149 ENGINEERING SURVEYING PLANNING LANDSCAPE ARCHITECTURE</small>	
PROJECT NUMBER 472-84460	DESIGN JAK	DRAWN TMS
REVISIONS:	APPROVED TMS	DATE 7/14/08
SCALE Noted		SHEET 9 OF 41