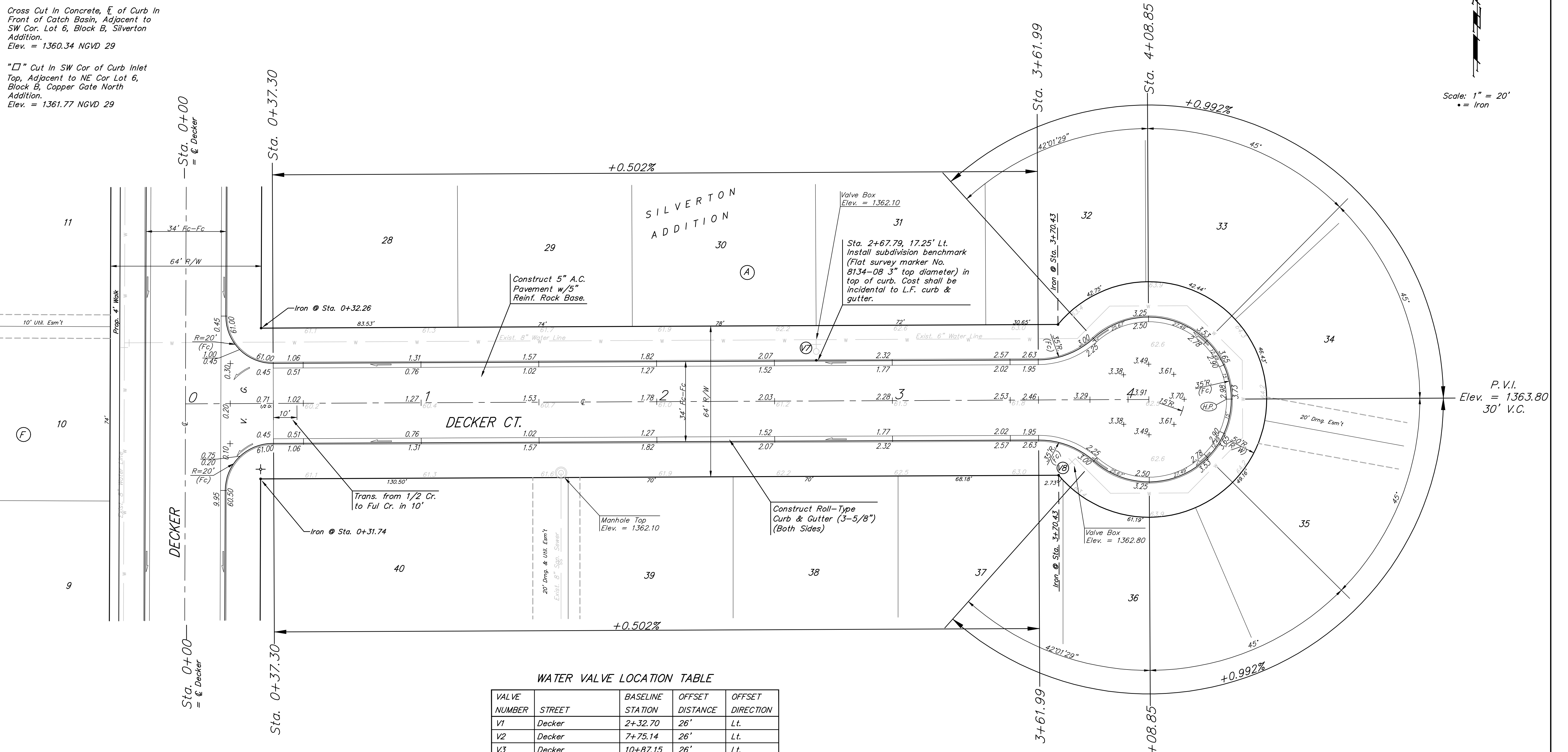
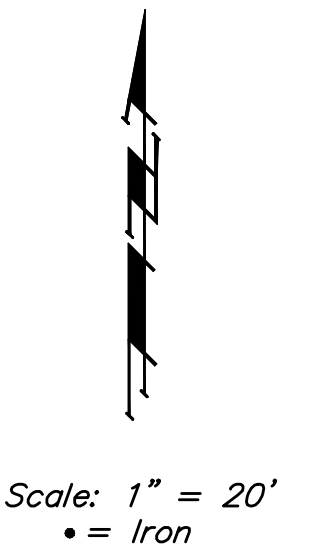


BENCHMARKS:
 Cross Cut In North End of Concrete Valley Gutter, Nickelton & Nickelton Ct., Adjacent to SW Cor. Lot 6, Block C, Silverton Addition.
 Elev. = 1361.49 NGVD 29

Cross Cut In Concrete, E of Curb In Front of Catch Basin, Adjacent to SW Cor. Lot 6, Block B, Silverton Addition.
 Elev. = 1360.34 NGVD 29

"□" Cut In SW Cor of Curb Inlet Top, Adjacent to NE Cor Lot 6, Block B, Copper Gate North Addition.
 Elev. = 1361.77 NGVD 29



WATER VALVE LOCATION TABLE

VALVE NUMBER	STREET	BASELINE STATION	OFFSET DISTANCE	OFFSET DIRECTION
V1	Decker	2+32.70	26'	Lt.
V2	Decker	7+75.14	26'	Lt.
V3	Decker	10+87.15	26'	Lt.
V4	Decker	13+92.59	25.29'	Lt.
V5	Ridgepoint	1+13.29	26'	Lt.
V6	Ridgepoint	6+36.47	26'	Lt.
V7	Decker Ct.	2+67.79	26'	Lt.
V8	Decker Ct.	3+77.55	24.88'	Rt.
V9	Westport Ct.	2+25.21	23'	Lt.
V10	Westport Ct.	3+94.58	39.73'	Rt.

Paving contractor will be responsible to operate all water valves on the project, in the presence of the inspector, to ensure accessibility to the valves, and that all valves are left in the "ON" position when the project is completed.

NOTE: ROLL TYPE CURB & GUTTER TO BE CONSTRUCTED ON THE PAVEMENT SHOWN ON THIS SHEET. TOP OF CURB ELEVATIONS ARE GIVEN FOR FULL HEIGHT CURB.

Baughman Silverton Addition - Phase II
DECKER CT.
 STA. 0+00 TO STA. 4+08.85

ENGINEERING | SURVEYING | PLANNING | LANDSCAPE ARCHITECTURE

Baughman Company, P.A. 315 Ellis St. Wichita, KS 67211 P 316-262-7271 F 316-262-0149

PROJECT NUMBER 472-84460	DESIGN JAK	DRAWN TMS
REVISIONS:	APPROVED	DATE 7/14/08
	SCALE Noted	SHEET 11 OF 41

E:\eng\Silverton\Phase 2\STR6.dwg 07-10-E955