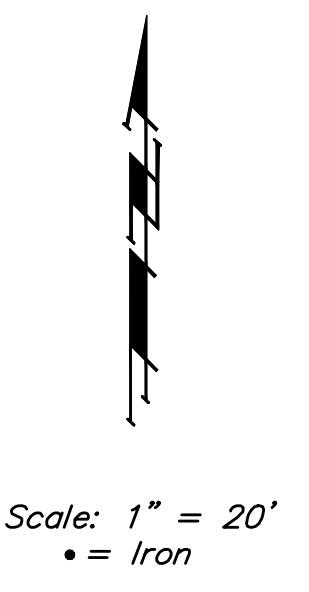
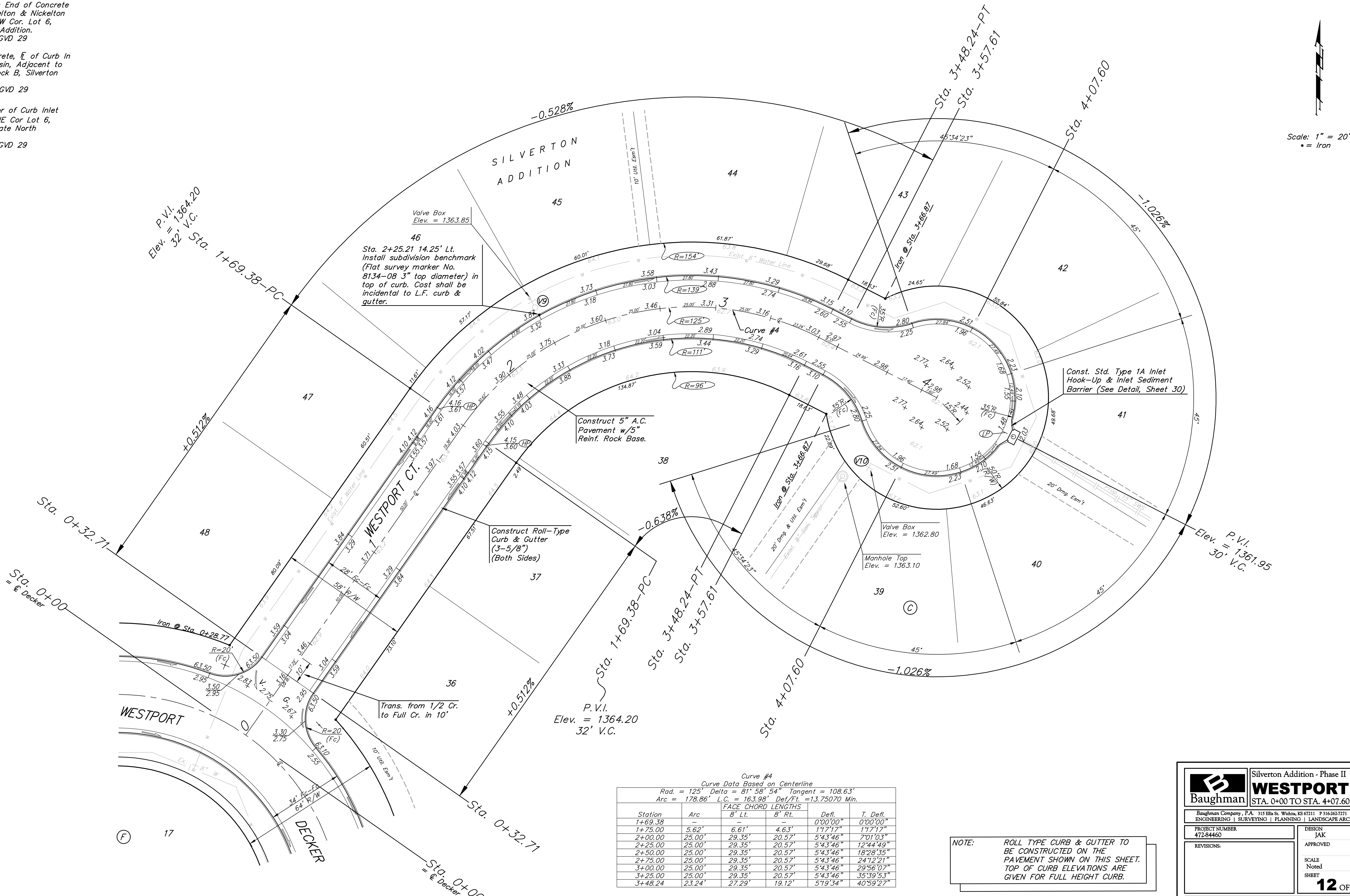


**BENCHMARKS:**  
 Cross Cut In North End of Concrete Valley Gutter, Nickelton & Nickelton Ct., Adjacent to SW Cor. Lot 6, Block C, Silverton Addition.  
 Elev. = 1361.49 NGVD 29

Cross Cut In Concrete, E of Curb In Front of Catch Basin, Adjacent to SW Cor. Lot 6, Block B, Silverton Addition.  
 Elev. = 1360.34 NGVD 29

"□" Cut In SW Cor of Curb Inlet Top, Adjacent to NE Cor Lot 6, Block B, Copper Gate North Addition.  
 Elev. = 1361.77 NGVD 29



Curve #4  
 Curve Data Based on Centerline  
 Rad. = 125' Delta = 81° 58' 54" Tangent = 108.63'  
 Arc = 178.86' L.C. = 163.98' Def/Pl. = 13.75070 Min.

Station	Arc	FACE CHORD LENGTHS		Defl.	T. Defl.
		8' Lt.	8' Rt.		
1+69.38	0.00'	0.00'	0.00'	0°00'00"	0°00'00"
1+75.00	5.62'	6.61'	4.63'	1°17'17"	1°17'17"
2+00.00	25.00'	29.35'	20.57'	5°43'46"	7°01'03"
2+25.00	25.00'	29.35'	20.57'	5°43'46"	12°44'49"
2+50.00	25.00'	29.35'	20.57'	5°43'46"	18°28'35"
2+75.00	25.00'	29.35'	20.57'	5°43'46"	24°12'21"
3+00.00	25.00'	29.35'	20.57'	5°43'46"	29°56'07"
3+25.00	25.00'	29.35'	20.57'	5°43'46"	35°39'53"
3+48.24	23.24'	27.29'	19.12'	5°19'34"	40°59'27"

**NOTE:** ROLL TYPE CURB & GUTTER TO BE CONSTRUCTED ON THE PAVEMENT SHOWN ON THIS SHEET. TOP OF CURB ELEVATIONS ARE GIVEN FOR FULL HEIGHT CURB.

**Baughman** Silverton Addition - Phase II  
**WESTPORT CT.**  
 STA. 0+00 TO STA. 4+07.60

Baughman Company, P.A. 315 Ellis St. Wichita, KS 67211 P 316-262-7271 F 316-262-0149  
 ENGINEERING | SURVEYING | PLANNING | LANDSCAPE ARCHITECTURE

PROJECT NUMBER 472-84460	DESIGN JAK	DRAWN TMS
REVISIONS:	APPROVED	DATE 7/14/08
SCALE Noted		SHEET <b>12 OF 41</b>

E:\eng\Silverton\Phase 2\STR7.dwg 07-10-E955